



## ADAMS: HISITORIC TOWER

Different views above are shown of the "Buck Rogers" science fiction tower along the Park Avenue elevation taken in 1999.

This fanciful facade crescendo houses nothing more than a closet at the roof level yet brings a new perspective to art deco architecture in the late nineteen thirties along with an acknowledgement of new forms being introduced into art deco architecture.

The photograph at right is by Steven Brook and appears in the book, "Deco Delights", 1988 by Barabara Baer Capitment., who writes.. "This is a detail photograph of the Adams tower, with its chamfered corners and deeply fluted concrete fence - an impressive architectural composition by L. Murray Dixon."







ADAMS: HISTORIC TOWER MAY 2012  
[www.arthurmarcus.com](http://www.arthurmarcus.com)





Studio apartments and connecting rooms are available  
for patrons desiring larger accommodations

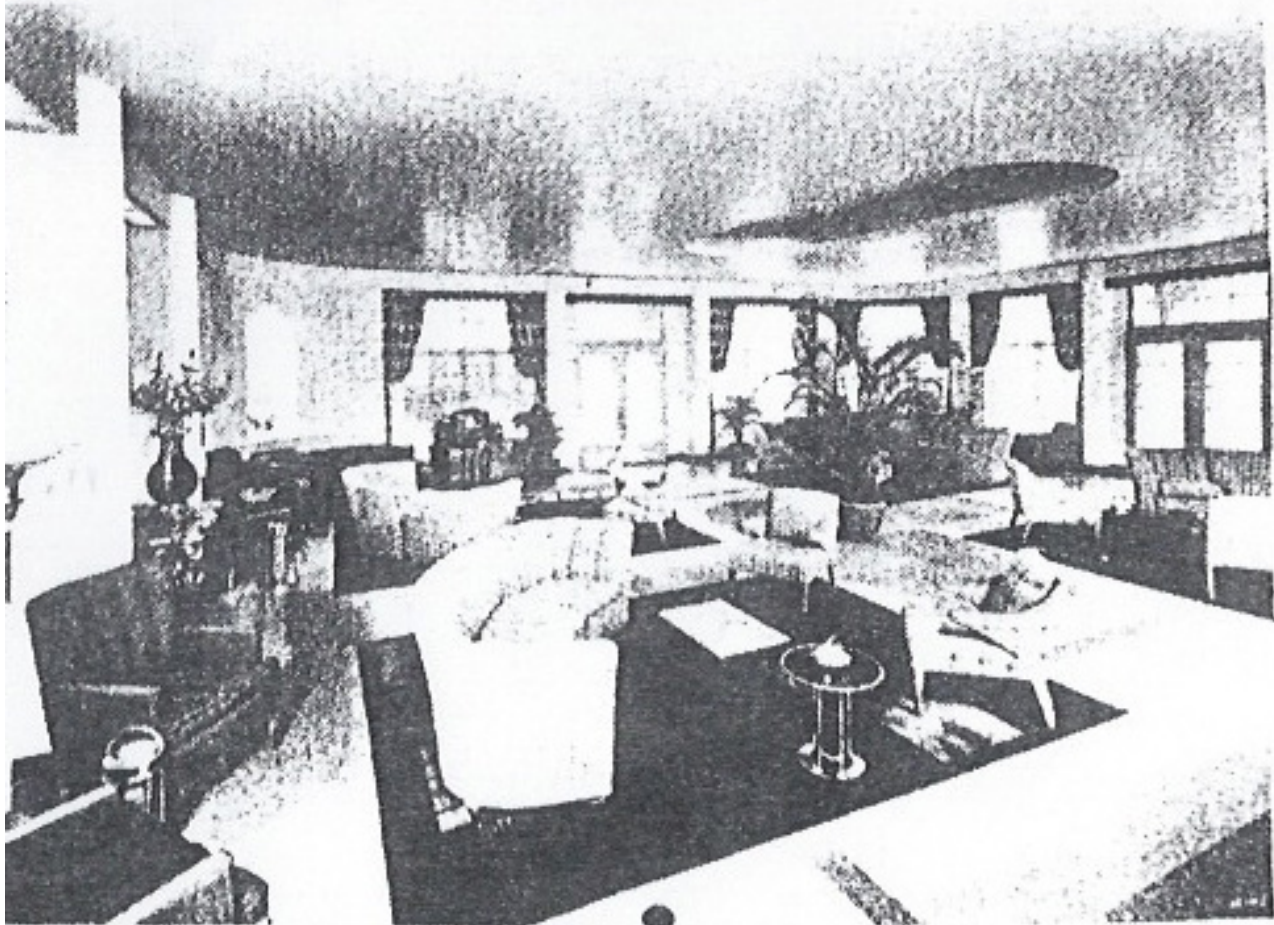
WRITE OR WIRE

ADAMS HOTEL

#### ADAMS: HISTORIC ADVERTISEMENT

ADAMS HOTEL IN THE MIAMI BEACH HOTEL & APARTMENT BOOK,  
1939-1940 RICHTER LIBRARY, UNIVERSITY OF MIAMI

service, solarium, recreation room, large dance patio and gardens. American and European plan. Entertainment and dancing nightly.



*Miami Beach Hotel & Apt. Book  
1939-40*

*U Miami Richter Library*

#### ADAMS: HISTORIC ADVERTISEMENT

ADAMS HOTEL IN THE MIAMI BEACH HOTEL & APARTMENT BOOK, 1939-1940 RICHTER LIBRARY, UNIVERSITY OF MIAMI. THIS INTERIOR VIEW OF THE MAIN LOBBY REVEALS THAT THE EXISTING CEILING IS THE ORIGINAL CEILING





## ADAMS: LOBBY, 1999

Looking from the inside towards the outside at the corner of 21st & Park Avenue.





## ADAMS: LOBBY 1999

Photo #1 at top shows view towards northwest corner of room and 21st Street.

Photo #2 @ right shows interior view of Elevator Door @ center-right and Historic Reception Desk @ left.

Photo #3 bottom right shows historic terrazzo floor pattern at elevator Lobby

Photo #4 below shows Historic stone reception desk.

Photo #5 shows exterior raised square medallions alongside the main lobby entrance





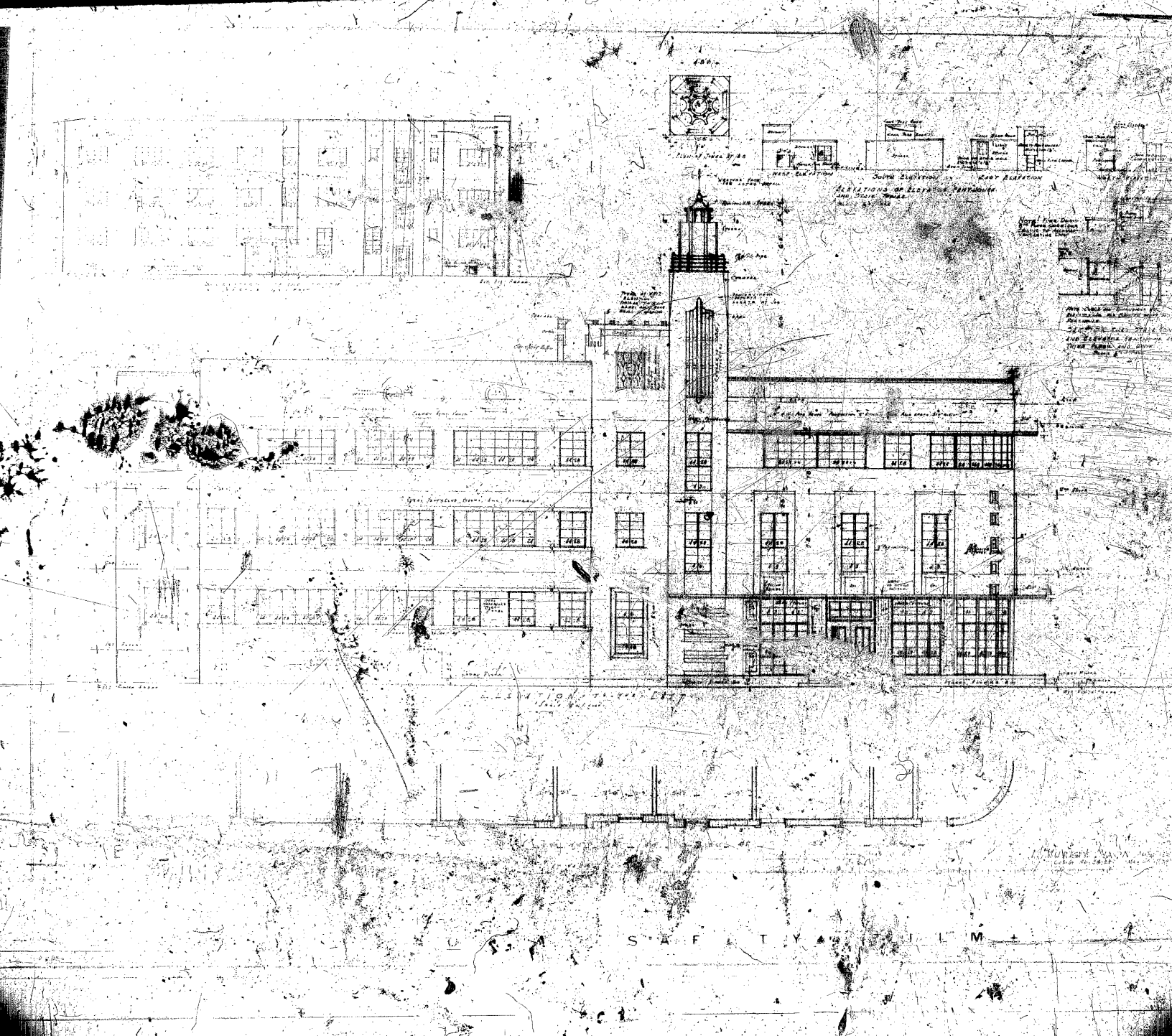
### ADAMS: LOBBY 1999

The photo at right shows the historic terrazzo flooring patterns at the rear lobby - to the west of the elevator and stair pictured.

Note the tray ceilings which were typical in all public areas except for the main lobby itself.

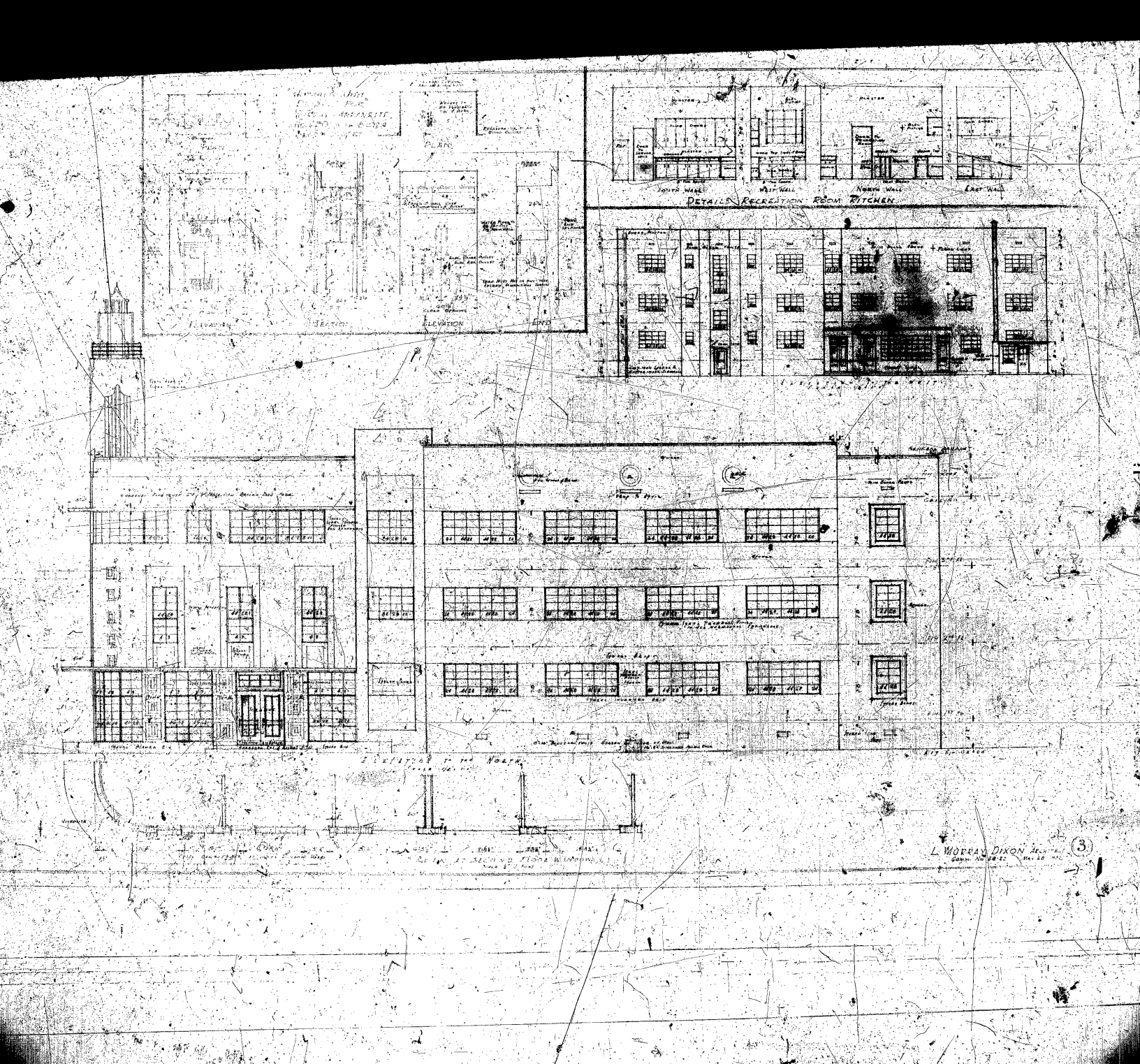






ADAMS: ORIGINAL ARCHITECTURAL DRAWINGS  
 L. MURRAY DIXON ARCHITECT  
 EAST ELEVATION FACING PARK AVENUE  
 FROM CITY of MIAMI BEACH RECORDS SEARCH 5.17.12





## ADAMS: ORIGINAL ARCHITECTURAL DRAWINGS

L. MURRAY DIXON ARCHITECT

NORTH ELEVATION FACING 21st STREET

FROM CITY OF MIAMI BEACH RECORDS SEARCH 5.17.12