

CLARK GABLE

COSMOPOLITAN

Swept Here!



A Generation of Love-making

THE EXCLUSIVE CLARK GABLE

Gable was commissioned a second lieutenant on October 28, 1942—number 0565390—in the upper third of his class at Miami Beach, Florida. He was sent to Flexible Gunnery School, Panama City, Florida, then to Advanced Gunnery School, Fort George Wright, Spokane, Washington. Then he was transferred to the 34th Bomb Group, a B-24 outfit, and finally to the 351st Bomb Group Heavy.

Gable was forty-one years old and as famous as an actor can get. His first Army assignment was to help his classmate Andrew J. McIntyre scrub the lobby of the Collins Park Hotel.

Gable

Clark Gable's present roles, a lone and constant traveler, a wild-game hunter who likes unexplored country, and a polished but sometime member of floating Continental society

Amelia, Texas, one day, 1910. The 100 men were sent to the front. The first planned to take, and when Clark's death he believed the plan they had agreed upon after consulting his father as a private matter. "My father," he said, "let me get to the bottom of it."

Clark Gable was a soldier when he met her. The photo here is a little later, in 1911, when Clark Gable was a private.

It was a long time before Gable met her again. He was in the army, and she was in the army. He was in the army, and she was in the army. He was in the army, and she was in the army.

Clark Gable was a soldier when he met her. The photo here is a little later, in 1911, when Clark Gable was a private.

Clark Gable was a soldier when he met her. The photo here is a little later, in 1911, when Clark Gable was a private.

Clark Gable was a soldier when he met her. The photo here is a little later, in 1911, when Clark Gable was a private.

Clark Gable was a soldier when he met her. The photo here is a little later, in 1911, when Clark Gable was a private.

Clark Gable was a soldier when he met her. The photo here is a little later, in 1911, when Clark Gable was a private.

Clark Gable was a soldier when he met her. The photo here is a little later, in 1911, when Clark Gable was a private.

Clark Gable was a soldier when he met her. The photo here is a little later, in 1911, when Clark Gable was a private.

Clark Gable was a soldier when he met her. The photo here is a little later, in 1911, when Clark Gable was a private.

Clark Gable was a soldier when he met her. The photo here is a little later, in 1911, when Clark Gable was a private.

Clark Gable was a soldier when he met her. The photo here is a little later, in 1911, when Clark Gable was a private.

Clark Gable was a soldier when he met her. The photo here is a little later, in 1911, when Clark Gable was a private.

Clark Gable was a soldier when he met her. The photo here is a little later, in 1911, when Clark Gable was a private.

Clark Gable was a soldier when he met her. The photo here is a little later, in 1911, when Clark Gable was a private.

Clark Gable was a soldier when he met her. The photo here is a little later, in 1911, when Clark Gable was a private.

Clark Gable was a soldier when he met her. The photo here is a little later, in 1911, when Clark Gable was a private.

Clark Gable was a soldier when he met her. The photo here is a little later, in 1911, when Clark Gable was a private.

Reprinted from: Cosmopolitan, June 1954

2000 Park Avenue

COLLINS PARK: HISTORY 1942

Advertisement from Cosmopolitan Magazine, June 1954 entitled "Clark Gable Swept Here!" featuring the Collins Park Hotel. From 1942 - 1945 the Collins Park was a military barracks, and its lobby was gone scrubbed by trainee Clark Gable, who was actually housed at the nearby Cadet Hotel.



COLLINS PARK HOTEL: HISTORY 1955

Collins Park Photograph circa mid-1950's

The lush vegetation has dissappeared and replaced with the popular sport of 'lobby watching' from the front porch. The signage over the main door still appears to be the original signage as contained in the WWII photograph preceding.

"The curved entry pavilion of the Collins Park faces the corner, its facade projects a series of small eyebrows broken by intersecting vertical columns similar in design to the Carlyle." (1)

(1) Miami Beach Art Deco Guide, MDPL, p.49.



COLLINS PARK: HISTORY 1988

Collins Park, 1988. Photograph by Steven Brooke is featured in the book "Deco Delights" 1988 by Barbara Baer Capitman. Particularly note the iconic address "2000" in the clerestory panel above the doors.

Also note the free-flowing "Radio Waves" metalwork embazoned onto the door panels to give the front entrance real panache.. These panels were emblematic of that era's obsession with technology; much like our own age.

In her book "Deco Delights" Barabra Baer Capitman writes.. "The Collins Park is another Hohauser marvel from 1939. Rippling wings lead to the circular entry, dramatized by vertical columns. The spandrels are decorated with a handsome chevron design. "

And in the Miami Beach Art Deco Guide, MDPL, 1988 „it says.. "During the 1930's a zig-zag symbol, reminiscent of the electric flash, radio waves or electric power began to appear. A new architectural style called Zig Zag Moderne became the rage..."



COLLINS PARK HOTEL: HISTORY 1988

Collins Park, 1988 photograph by Steven Brooke in "Deco Delights". The chevron design above the front entrance is one of the hallmark design motifs of the building, as well as the variations above the front entrance doors themselves. The top parapet walls contain false windows at the fourth floor composed of glass block - thru which the blue sky can be seen.. Note that this signage lettering does not appear to be original. The original lettering is shown in the World War II photograph on a previous page.



PHOTOGRAPH CIRCA 1999

Although the radio waves at the door panels are not in this photograph they were existing at the time of this photo.

COLLINS PARK HOTEL: HISTORY 1999

Collins Park, circa 1965

“The curved entry pavilion of the Collins Park faces the corner, its facade projects a series of small eyebrows broken by intersecting vertical columns similar in design to the Carlyle Hotel” (1) Designed in classic Streamline Art Deco style, the circular window walls welcome you to the lobby. (1)

“This masonry construction apartment building represents a fine example of Streamline architecture in Miami Beach in the 1930’s and 1940’s. It is architecturally noteworthy for its stylistic features, Art Deco details, and its cohesiveness within the neighborhood.” (2)

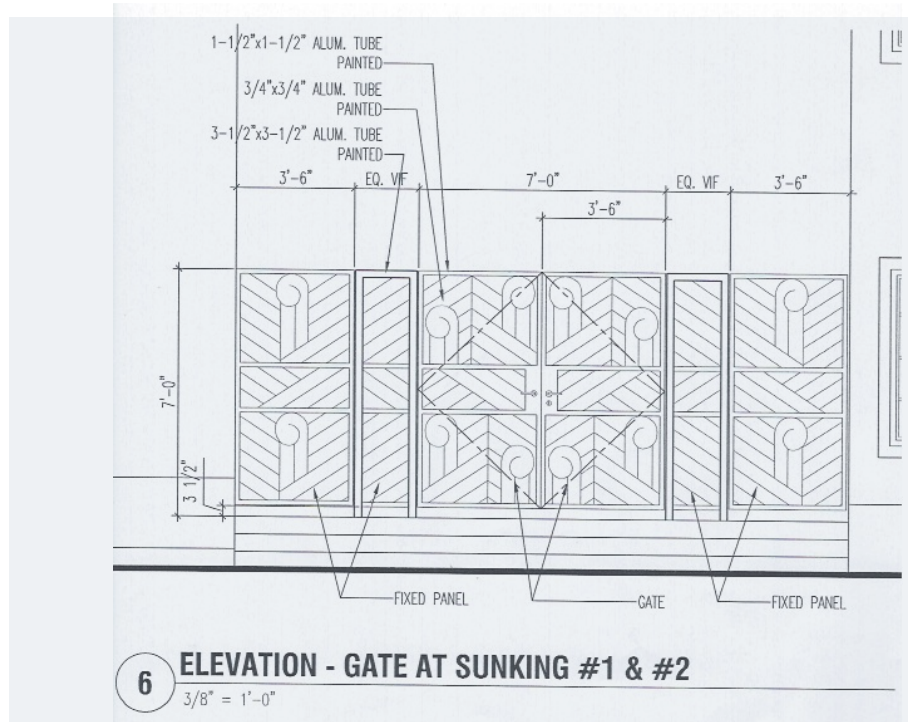
(1) Miami Beach Art Deco Guide, MDPL

(2) State of Florida Master Site File Data Sheet as included in this report.



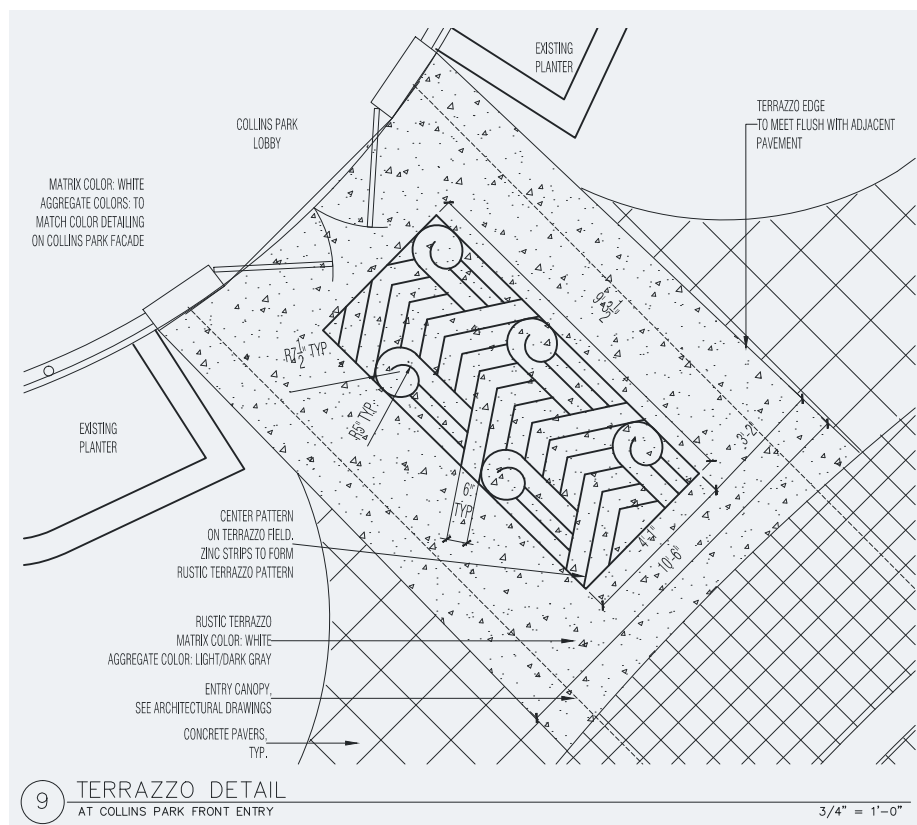
COLLINS PARK HOTEL: HISTORY 2012

In recent years an arsonist has ravaged three of the Collins Park buildings before being apprehended. The damaged buildings include the Collins Park, Tyler and Sunking 2. The photograph above shows the Collins Park after the fire destroyed the third floor causing it to crash down onto the second floor. It is not known at this time as to how much damage may have occurred to the spectacular first floor lobby and terrazzo floors. The Owners are in process of shoring up these buildings to prevent further damage.



COLLINS PARK: HISTORY 2000

PART OF THE FORMER HISTORIC PRESERVATION BOARD APPROVALS IN 2000 INCLUDED THE PROPOSED GATES ABOVE AND THE PROPOSED INSET TILE AT MAIN ENTRANCE DESIGNED BY ARTHUR MARCUS ARCHITECT. THE ENTRY TILE INSET AND THE GATES AND FENCES AT ALL OPENINGS BETWEEN BUILDINGS ON THE PROPERTY WERE DESIGNED IN ORDER TO PROVIDE A COMPREHENSIVE NEIGHBORHOOD APPEARANCE. THE DESIGNS FOR THESE GATES WERE MODELED AFTER THE CHEVRON DESIGNS AT THE FRONT ELEVATION OF THE COLLINS PARK ABOVE THE MAIN ENTRANCE.





COLLINS PARK: EXTERIOR FRONT ELEVATION VIEWS 1999

COLLINS PARK: HISTORY 1999

In addition to the handsome chevron designs above the main entrance structure the front corner building elevations contain some unique rounded corners which serve to soften the mass of the facade as it gracefully turns the corner and frames the main entrance lobby.



COLLINS PARK HOTEL: LOBBY 1999

The Collins Park Hotel Lobby is one of the truly great Art Deco interiors in all of South Beach. The semi-circular curve of the exterior glazed full height window wall serves to bring the outside to the inside. With its simple architecture the large lobby space is restrained and impressive. The top photograph is looking towards the front entrance from the inside lobby. The lower left photograph is looking from the front doors into the lobby with the Reception Desk to the right and the red elevator door at center. The Photo at lower right shows the typical lobby “tray” ceiling details.

