

EXISTING TREE DISPOSITION LIST									
NUMBER	BOTANICAL NAME	COMMON NAME	HEIGHT (FT)	SPREAD (FT)	DBH (FT)	TREE CANOPY (SQ.FT)	PALM CANOPY (SQ.FT)	CONDITION	DISPOSITION
1	Pinus Elliottii	Slash Pine	80	50	60	1,964		Fair	Remove
2	Callistemon	Bottlebrush	10	6	10	28		Fair	Remove
TOTAL PROPOSED CANOPY LOSS (in square feet)						1,992	0	1,992	8/1/2018

MIAMI BEACH TREE MITIGATION SUMMARY CHART				
PROPOSED CANOPY LOSS				
1,992   Proposed Canopy Loss (see Existing Tree Disposition List)				
REQUIRED CANOPY MITIGATION				1,992
QUANTITY	REPLACEMENT CANOPY TYPE	MIN. SIZE AT PLANTING	CANOPY CREDIT (Sq.Ft)	CANOPY MITIGATED (Sq.Ft)
4	Category 1 Trees	12' OAH	300	1,200
10	Category 2 Trees	10' OAH	150	1,500
0	Category 3 Trees	8' OAH	100	0
0	Category 4 Palms	6' OAH	50	0
PROVIDED CANOPY MITIGATION				2,700

TREE DISPOSITION LEGEND

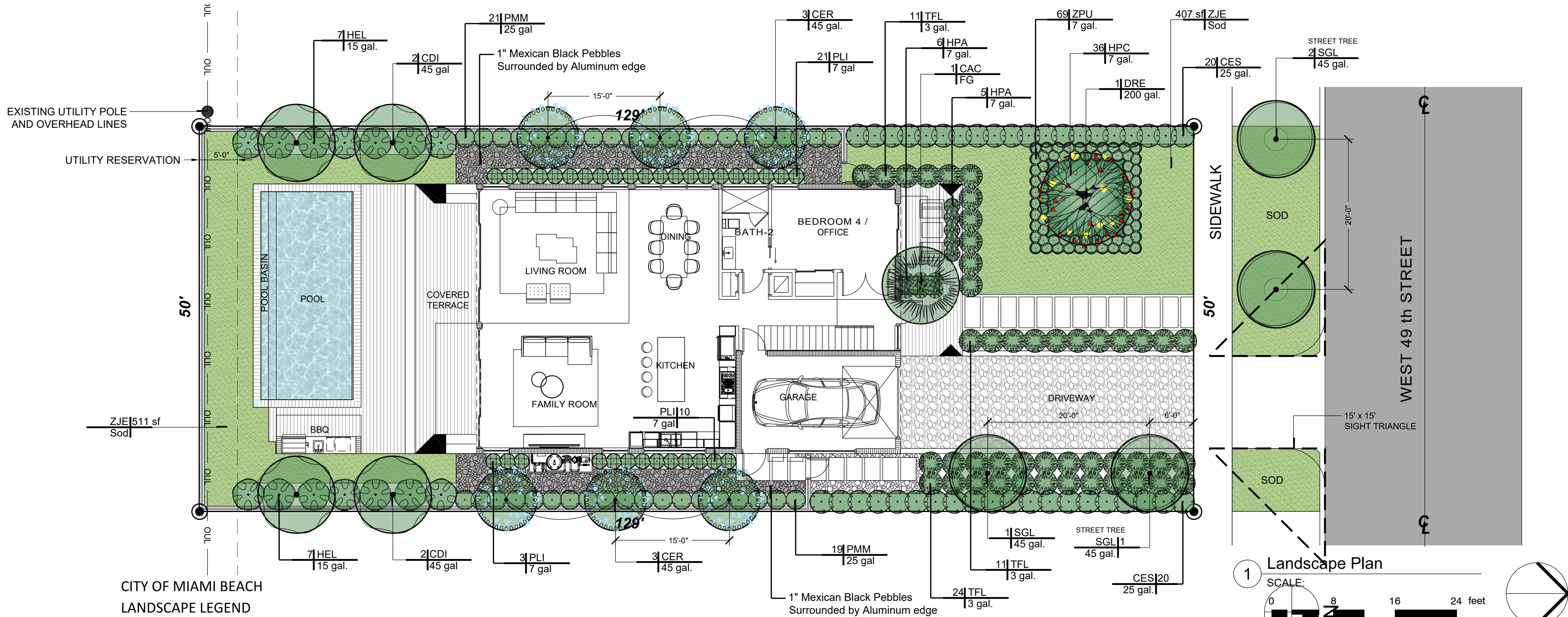
Existing tree or palm to be removed

Existing tree and palm to remain in their existing location and be protected, no construction or excavation shall be permitted within the dripline of the trees.

LIMITS OF EXISTING TREE & PALM PROTECTION ZONE

Symbols do not show the actual canopy of the trees, for clarity, always cross check with Existing Tree Disposition List for sizes and disposition status. Contact landscape architect



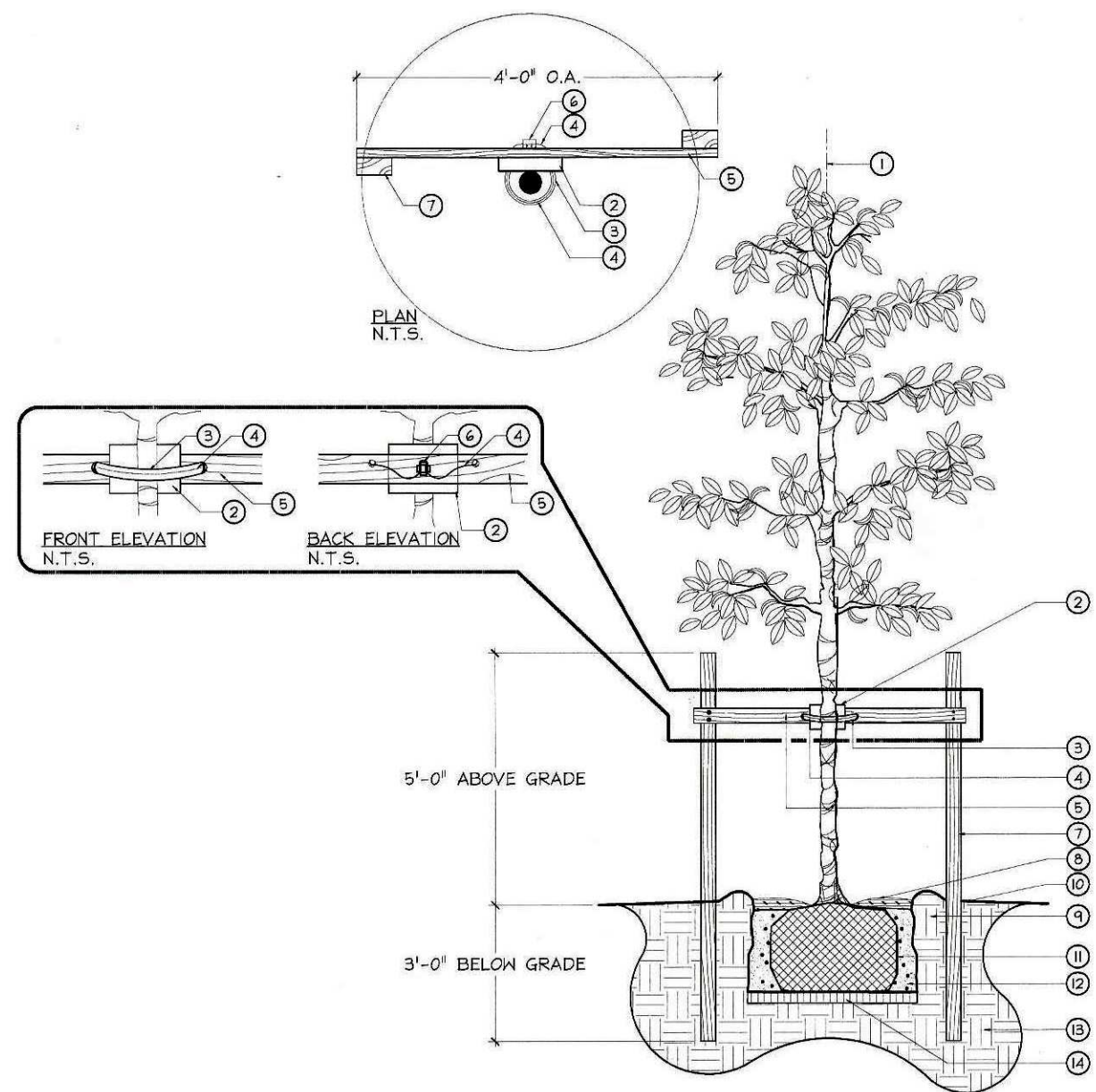


- GENERAL NOTES**
- Landscape Contractor is responsible for verifying locations of all underground and overhead utilities and easements prior to commencing work. All Utility companies and/or the General Contractor shall be notified to verify utility locations prior to digging. Utility trenching is to be coordinated with the Landscape plans prior to beginning of project. The Owner or Landscape Architect shall not be responsible for damage to utility or irrigation lines.
  - Landscape Contractor shall examine the site and become familiar with conditions affecting the installation prior to submitting bids. Failure to do so shall not be considered cause for future extras or complaints.
  - Landscape Contractor is responsible for verifying all plant quantities prior to bidding and within (7) seven calendar days of receipt of these plans shall notify the Landscape Architect in writing of any and all discrepancies. In case of discrepancies planting plans shall take precedence over plant list.
  - No substitutions shall be made without prior consent of the Landscape Architect, City Urban Forester and or the Planning Department. Plant material supply is the responsibility of the Landscape Contractor, and he/she shall take steps to insure availability at time of planting.
  - All plant material shall meet or exceed the size on the plant list. In all cases meeting the height and the spread specifications shall take precedence over container size.
  - The Landscape Contractor is responsible for coordinating tree and palm removals and transplants shown on the Tree/Palm Disposition Plan. The Landscape Contractor is to remove and discard from site existing unwanted trees, palms, shrubs, groundcovers, sod and weeds within landscape areas.
  - All planted areas to be outfitted with automatic irrigation system providing 100% coverage and 50% overlap. A rain sensor must be part of the irrigation system.
  - Landscape contractor to provide finish grade 3" lower than FFE of all hardscapes, i.e. roads, walks, curbs, pavers, etc....., to accommodate 3" layer of mulch.
  - All tree and Palm relocations shall be performed in accordance with ANSI A-300 (Part 6) standards and industry accepted good horticultural practices by an ISA Certified Arborist or ASCA Consulting Arborist.

- PLANTING NOTES**
- Landscape Contractor shall furnish and install all trees, palms, shrubs, groundcover, sod, planting soil, fertilizer, herbicide, preemergence herbicide, seed, and mulch.
  - Landscape Contractor shall guarantee all plant material for a period of one year from the day of final acceptance by the Landscape Architect.
  - All plant material shall be Florida #1 or better, as defined in the Grades and Standards for Nursery Plants, Part I and II by the State of Florida Department of Agriculture.
  - Material not meeting Florida #1 or better will not be accepted, Landscape Architect, City Urban Forester and or the Planning Department staff to approve ROW material before it is planted.
  - Landscape Contractor shall coordinate his work with that of the Irrigation and Landscape Lighting Contractor.
  - The Landscape Contractor shall treat plant areas with preemergence herbicide after weeds and grass have been removed. Landscape Contractor shall wait (7) seven days after preemergence treatment prior to planting.
  - Planting soil shall be a mix of 30% inland muck and 70% freshwater sand. Planting soil mix/backfill shall be clean and free of construction debris, weeds, rock and noxious pests and disease.
  - All soil mix in plant beds for groundcovers, shrubs, palms and trees shall be as per details. All other areas shall be dressed with a minimum of 4" topsoil.
  - All planting areas and planting pits shall be tested for sufficient percolation prior to final planting and irrigation installation to ensure proper drainage. Plant beds in parking lots and in areas compacted by heavy equipment shall be de-compacted so that drainage is not impeded.
  - All synthetic burlap, string, cords or wire baskets shall be removed before trees are planted. All synthetic tape shall be removed from branches and trunks prior to final acceptance. The top 1/3 of the burlap shall be removed or tucked into the plant pit before the trees are backfilled.
  - Landscape Contractor is responsible for mulching all plant beds and planters with a minimum 3" layer of natural color Eucalyptus or Enviromulch immediately after planting. **In no case shall Cypress or red mulch be used.** Mulch shall not be applied within 6" of any tree or palm trunk that are installed or incorporated into the project.
  - All Trees/Palms in soil areas are to receive a 36"/48" diameter mulched saucer at the base of the trunk respectively.
  - Landscape Contractor shall guy and stake all trees and palms as per specifications and details. No nails, screws or wiring shall penetrate the outer surface of trees and palms. All guying and staking shall be removed twelve months after planting. Exceptions require written authorization from the City Urban Forester.
  - All palm and tree guy wires and bracing are to be flagged for visibility, for their duration. All unattended and unplanted tree pits shall be properly barricaded and flagged during construction.
  - All broken branches and clear trunk branches on street trees are to be pruned according to ANSI A-300 Guidelines for Tree Pruning to min. 5'-0" height clearance to the base of canopy. All tree and root pruning activities shall be performed by ISA Certified Arborist and or ASCA Consulting Arborist in accordance with ANSI A-300 standards and industry accepted good horticultural practices.
  - Landscape Contractor to provide all plants with fertilizer 30 days after installation. Fertilizer shall comply with state fertilizer laws. It shall have a chemical designation as indicated for each type of plant:  
Palms: 12-4-12 N-P-K, Slow Release Palm Special with micronutrients.  
Shrubs, Groundcover and Trees: 6-6-6 N-P-K, with micronutrients.

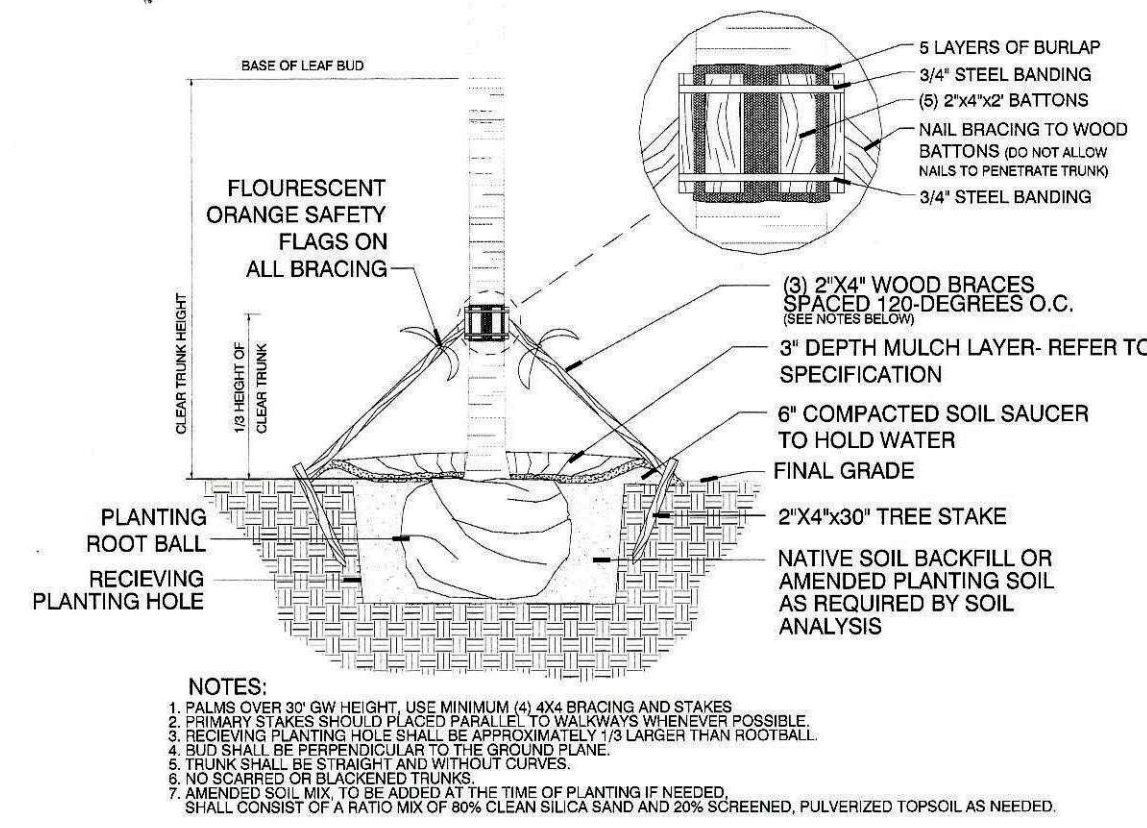
1 General Planting Notes

SCALE: N.T.S.



3 Tree Planting Detail

SCALE: N.T.S.



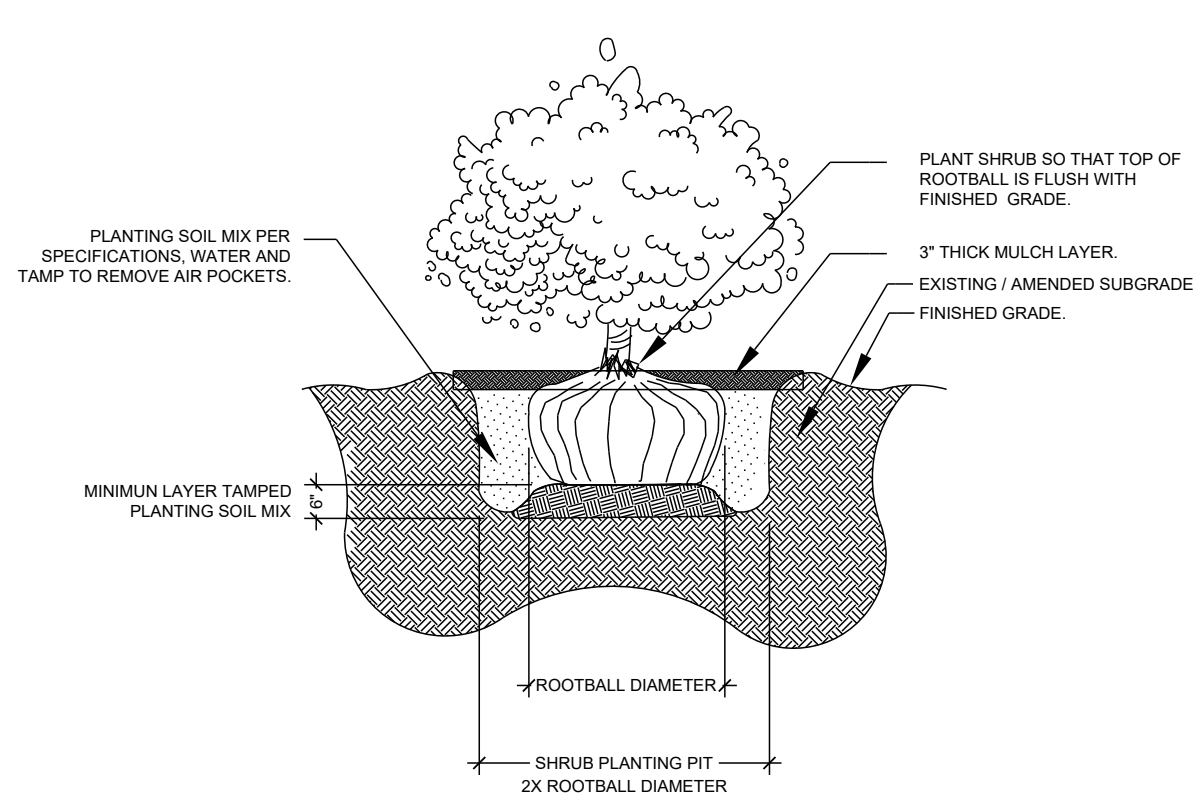
City of Miami Beach

Typical Palm Planting Detail

N.T.S.

4 Palm Planting Detail

SCALE: N.T.S.



5 Shrubs Planting Detail

SCALE: N.T.S.

2 Landscape Legend

SCALE: N.T.S.

VILLA JAGGI

DESIGN REVIEW BOARD SUBMITTAL

544 W 49TH STREET

MIAMI BEACH, FLORIDA 33140

ATELIER305

ARCHITECTURE+ DESIGN

Copyright © 2017 ATELIER 305. All rights reserved.

LANDSCAPE PLAN

DATE: 08/20/2018

SCALE: AS SHOWN

L-200

DERICK LANGE (LA6667045)

ALL LANDSCAPE DATA INC.

Landscape (Architecture + Plant Information)

4459 NW 87 CT - Doral, FL 33178 / (305) 303-7059

www.alllandscapeata.net & .com



PLANT SCHEDULE									
TREES	QTY	BOTANICAL NAME	COMMON NAME	CONT	DBH	HGT	SRD	REMARKS	
CDI	4	Coccoloba diversifolia	Pigeon Plum	45 gal	3"	14' OA	6'	STD - Florida Native - Miami-Dade Landscape Manual - Very Drought Tolerant	
CER	6	Conocarpus erectus 'sericeus'	Silver Buttonwood	45 gal.	2"	12' OA	6'	STD - Florida Native - Miami-Dade Landscape Manual - Drought Tolerant	
DRE	1	Delonix regia	Royal Poinciana	200 gal.	6"-8"	18'-20' OA	10'		
SGL	4	Simarouba glauca	Paradise Tree	45 gal.	3"	12'-14' OA	6'	STD - Florida Native - Miami-Dade Landscape Manual - Drought Tolerant	
PALM TREES	QTY	BOTANICAL NAME	COMMON NAME	CONT	DBH	HGT	SRD	REMARKS	
CAC	1	Carpentaria acuminata	Carpentaria Palm	FG	5" each	24' CT	7' each	Double	
SHRUBS	QTY	BOTANICAL NAME	COMMON NAME	CONTAINER	HEIGHT	SPREAD	SPACING	REMARKS	
HEL	14	Heliconia	False Bird of Paradise	15 gal.	5' OA	5'	48" o.c.		
HPA	11	Heliconia psittacorum 'Andromeda'	Parrot's Beak 'Andromeda'	7 gal.	3'	2'	24" o.c.		
PLI	34	Psychotria ligustrifolia	Bahama Coffee	7 gal	2'	2'	24" o.c.	Florida Native - Miami-Dade Landscape Manual	
TFL	46	Tripsacum floridanum	Florida Gamagrass	3 gal.	2'	2'	36" o.c.	Florida Native - Miami-Dade Landscape Manual Drought Tolerant	
ZPU	69	Zamia pumila	Coontie	7 gal.	1.5'	1.5'	18" o.c.	Florida Native - Miami-Dade Landscape Manual - Drought Tolerant	
LARGE SHRUBS	QTY	BOTANICAL NAME	COMMON NAME	CONTAINER	HEIGHT	SPREAD	SPACING	REMARKS	
CES	40	Conocarpus erectus 'sericeus'	Silver Buttonwood	25 gal.	6' OA	2.5'	36" o.c.	Shrub Type - Florida Native - Miami-Dade Landscape Manual	
PMM	40	Podocarpus macrophyllus 'Maki'	Shrubby Yew	25 gal	6'-7' OA	2'	30" o.c.		
SHRUB AREAS	QTY	BOTANICAL NAME	COMMON NAME	CONTAINER	HEIGHT	SPREAD	SPACING	REMARKS	
HPC	36	Heliconia psittacorum 'Choconiana'	Parrot's Beak 'Choconiana'	7 gal.	3'	2'	20" o.c.		
GROUND COVERS	QTY	BOTANICAL NAME	COMMON NAME	CONTAINER	HEIGHT	SPREAD	SPACING	REMARKS	
ZJE	919 sf	Zoysia japonica 'Empire'	Korean Grass	Sod					



CDI - Pigeon Plum



CER - Silver Buttonwood



DRE - Royal Poinciana



SGL - Paradise Tree



CAC - Carpentaria Palm



HEL - False Bird of Paradise



HPA / HPC - Parrot's Beak



PLI - Bahama Coffee



TFL - Florida Gamagrass



ZPU - Coontie



CES - Silver Buttonwood



PMM - Shrubby Yew

VILLA JAGGI  
DESIGN REVIEW BOARD SUBMITTAL

544 W 49TH STREET  
MIAMI BEACH, FLORIDA 33140

ATELIER305  
ARCHITECTURE+ DESIGN  
Copyright © 2017 ATELIER 305. All rights reserved.

DERICK LANGEL (LA6667045)  
ALL LANDSCAPE DATA INC.  
Landscape (Architecture + Plant Information)  
4459 NW 97 CT - Doral, FL 33178 / (305) 303-7059  
www.alllandscapeata.net & .com

GROUND FLOOR PLAN  
DATE: 08/20/2018  
SCALE: NTS  
L-300