

1 EXISTING TREE PLAN  
NTS

EXISTING TREE TABLE

TREE #	NAME	TRUNK Ø	HIGH	CANOPY	STATUS
T-1	ALEXANDRIA PALM	6"	20'	10'	REMOVE
T-2	ALEXANDRIA PALM	6"	20'	10'	REMOVE
T-3	ALEXANDRIA PALM	4"	20'	10'	REMOVE
T-4	ALEXANDRIA PALM	4"	20'	10'	REMOVE
T-5	ALEXANDRIA PALM	4"	20'	10'	REMOVE
T-6	BOTTLE PALM	12"	30'	10'	REMOVE
T-7	ALEXANDRIA PALM	8"	30'	10'	REMOVE
T-8	BOTTLE PALM	12"	30'	10'	REMOVE
T-9	BOTTLE PALM	12"	30'	10'	REMOVE
T-10	ALEXANDRIA PALM	4"	20'	10'	REMOVE
T-11	ALEXANDRIA PALM	4"	20'	10'	REMOVE
T-12	MELALEUCA	24"	40'	30'	REMOVE
T-13	ALEXANDRIA PALM	4"	20'	10'	REMOVE
T-14	ALEXANDRIA PALM	4"	20'	10'	REMOVE
T-15	BOTTLE PALM	15"	30'	10'	REMOVE
T-16	SABAL PALM	12"	20'	15'	REMOVE
T-17	ALEXANDRIA PALM	6"	20'	10'	REMOVE
T-18	UNKNOWN	6"	20'	10'	REMOVE
T-19	ALEXANDRIA PALM	6"	20'	10'	REMOVE
T-20	ALEXANDRIA PALM	6"	20'	10'	REMOVE
T-21	ALEXANDRIA PALM	4"	20'	10'	REMOVE

SYMBOL KEY



IF SHEET IS LESS THAN (24"x36") IT IS A REDUCED PRINT, SCALE ACCORDINGLY

VINCENT FILIGENZI DESIGN  
LANDSCAPE ARCHITECT & PLANNER  
P. 314.461.4611  
2035 2ND AVE  
MIAMI BEACH, FL 33137  
P. 786.346.8008  
www.vincentfiligenzi.com  
102520202

REVISION	DESCRIPTION	DATE

NORTH

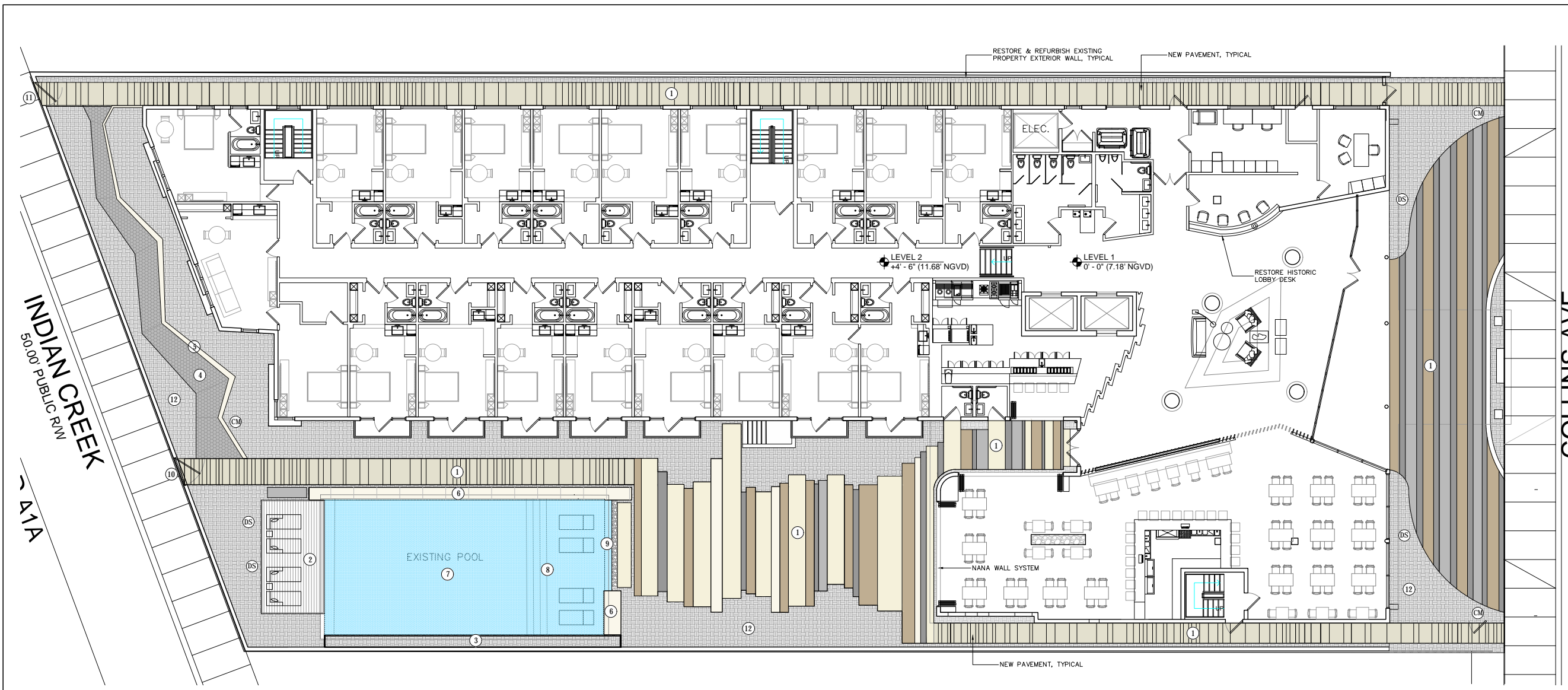
PRINCE MICHAEL  
2618 COLLINS AVENUE, MIAMI BEACH, FL  
HISTORIC RENOVATION

VINCENT A. FILIGENZI  
LA #6867191

HISTORIC PRESERVATION BOARD  
JOB NUMBER: 17013  
ISSUE DATE: 06.15.2017  
SCALE: AS NOTED

SHEET TITLE  
EXISTING TREE DISPOSITION  
PLAN GROUND LEVEL

SHEET NUMBER  
**LD-1.0**



**1** PROPOSED HARDSCAPE PLAN - GROUND LEVEL  
SCALE: 1/8" = 1'-0"

**PEDRO PORTUGESE COBBLE**



**EXPOSED AGGREGATE BANDING**

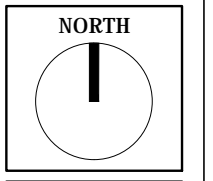


**SYMBOL KEY**

- ① CONCRETE W/ INTEGRAL COLOR AND EXPOSED AGGREGATE FINISH
- ② IPE WOOD DECK ON GRADE
- ③ ALUMINUM PLANTER BOX W/ POWDER COAT FINISH
- ④ PAVER ON SAND WALK
- ⑤ CONCRETE BENCH W/ TILE FINISH
- ⑥ CONCRETE POOL COPING WITH TILE FINISH
- ⑦ EXISTING SWIMMING POOL W/ NEW DECORATIVE RESURFACING PATTERN
- ⑧ EXISTING SWIMMING POOL W/ NEW STEP ENTRY AND SHALLOW LOUNGE AREA
- ⑨ EXISTING POOL W/ MODIFIED OVERFLOW THIS SECTION ONLY
- ⑩ MAIN REAR PEDESTRIAN GATE ENTRY.
- ⑪ REAR SERVICE & TRASH GATE
- ⑫ PLANTING AREA TYP.

VINCENT FILIGENZI DESIGN  
LANDSCAPE ARCHITECT & PLANNER  
P. 304.667.191  
2035 2ND AVE  
MIAMI, FL 33137  
P. 786.46.8008  
www.vincentfiligenzi.com  
1025202020

REVISION	DESCRIPTION	DATE



**PRINCE MICHAEL  
2618 COLLINS AVENUE, MIAMI BEACH, FL  
HISTORIC RENOVATION**

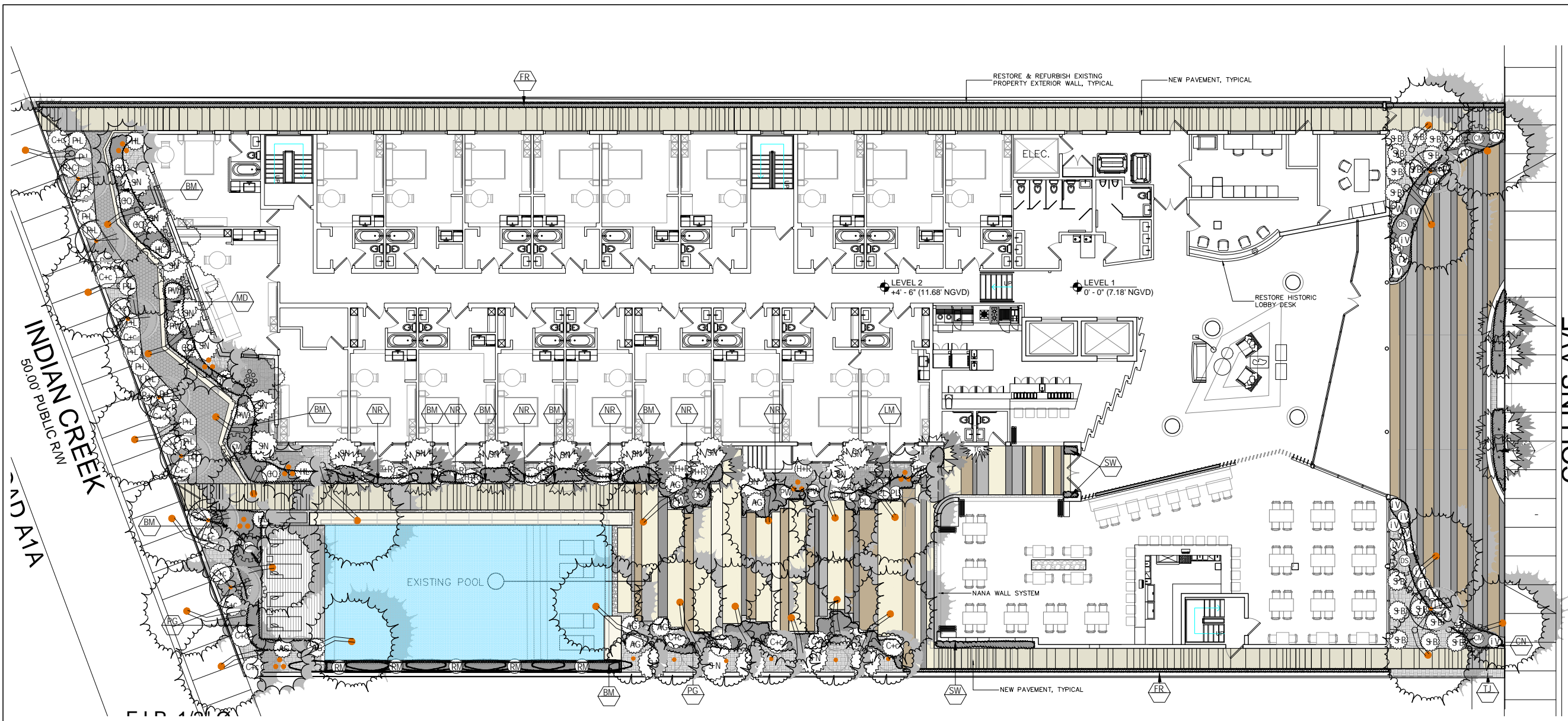
PROFESSIONAL SEAL  
SEAL  
VINCENT A. FILIGENZI  
LA #6667191

HISTORIC PRESERVATION BOARD  
JOB NUMBER: 17013  
ISSUE DATE: 06.15.2017  
SCALE: AS NOTED

SHEET TITLE  
**PROPOSED HARDSCAPE PLAN GROUND LEVEL**

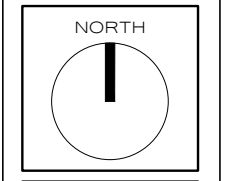
SHEET NUMBER  
**LH-1.0**

IF SHEET IS LESS THAN (24"x36") IT IS A REDUCED PRINT, SCALE ACCORDINGLY



VINCENT FILIENZI DESIGN  
 LANDSCAPE ARCHITECT & PLANNER  
 2035 2ND AVE  
 MIAMI BEACH, FL 33139  
 P: 774.36.8000  
 WWW.VINCENTFILIENZI.COM  
 1025202020

REVISION	DESCRIPTION	DATE



PRINCE MICHAEL  
 2618 COLLINS AVENUE, MIAMI BEACH, FL  
 HISTORIC RENOVATION

1 PROPOSED OVERALL PLANTING PLAN - GROUND LEVEL  
 SCALE: 1/8" = 1'-0"

QTY	BOTANICAL NAME	COMMON NAME	SPECIFICATION	QTY	NATIVE/ DROUGHT
<b>TREES &amp; PALMS</b>					
	ACOELORRHAPHIS WRIGHTII	PAUROTIS EVERGLADES PALM	20-22' OA HT. Heavy Clumps	3	*
	CARYOCHALUS MITIS	GIANT FISHTAIL PALM	22-24' OA HT. Heavy Clumps	6	*
	COCCOLOBA DIVERSIFOLIA	PIGEON PLUM TREE	PG 12' HT 2-3" DBH	7	*
	COCCOLOBA UVIFERA	SEA GRAPE TREE	12-14' HT X 10" W. BARK FT. CHARACTER	3	*
	COCOS NUCIFERA	COCONUT PALM	PG 18-20' Staggered Hse. Medium W. Character	50	*
	LIVISTONA CHINENSIS	CHINESE FAN PALM	12' OA HT DBH	3	*
	MYRSINE FRAGRANS	SPAMPON STOPPER TREE	10' HT X 8" W. MULT. TRUNK	20	*
	THECAX RADICATA	THATCH PALM	11-13' OA HT DBL	12	*
<b>SHRUBS &amp; ACCENTS</b>					
	ALOCASIA MACRORRHIZA BORNEO GIGANT	ELPHANT EAR	13 GA 6' HT	7	*
	CAPPARIS CYNOBALLOPHORA	JAMAICAN CAPER	13 GA @ 21" OC (ROOF)	198	*
	CAPPARIS CYNOBALLOPHORA	JAMAICAN CAPER	25 GA @ 18" OC (GROUND)	11	*
	COOPERHICIA MACROLOBSA	COOPERHICIA MACROLOBSA	4' HT	3	*
	DIODON SPHELOSCHEIDTII	COYAB	25 GA 6' HT	3	*
	HELICONIA ROSTRATA	HELICONIA	7 GA	18	*
	HEX VENTRICA	STOKES DWARF	15 GA @ 25" OC	24	*
	PHILODENDRON WEEKS HYBRID RED	PHILODENDRON WEEKS HYBRID	2' HT 7 GA	7	*
	RAVENALLA MADRASCARIBENSIS	TRAVELERS TREE	PG 12' HT DBL	5	*

<b>GROUNDCOVERS &amp; VINES</b>						
	CL	CLUSIA NANA	DWARF PITCH APPLE	3 gal @ 12" OC	35	*
	PO	OUROUJIDO CAPITULATA	PALM GRASS	3 gal @ 18" OC	55	*
	DB	DIETES BICOLOR	AFRICAN IRIS	3 gal @ 18" OC	150	*
	FL	FRINDIA LITORALIS	GOLDEN CRISPER	3 gal @ 18" OC	90	*
	FR	FIGUS REPENS	CREEPING FIG VINE	1 GAL @ 12" OC	221	*
	LM	LIRIOPE MUSCARI	EVERGREEN GIANT	3 gal @ 18" OC	153	*
	MD	MONSTERA DELICIOSA	SWISS CHEESE PLANT	3 gal @ 24" OC	33	*
	NR	NEOMARICA CAERULEA REGINA	GIANT APOSTLES IRIS	3 gal @ 12" OC	75	*
	PB	PHILODENDRON BURLE MARX	BURLE MARX	3 gal @ 18" OC	34	*
	PO	PORTULACA GRANDIFLORA	ROSE ROSS PURSLANE	1 GAL @ 12" OC	251	*
	SW	SANSEVERIA MASONIANA	WHALES FIN	7 gal @ 18" OC	19	*
	SB	SPARTINA BAKERI	SAND CORD GRASS	3 gal @ 34" OC	18	*
	TG	THUNBERGIA GRANDIFLORA	BLUE SKY VINE	3 gal TRELIS	3	*
<b>LAWN, MULCH &amp; MISC ITEMS</b>						
	LAWN	ZOYSIA JAPONICA	CASHMERE ZOYSIA GRASS	300 PALLETS	1	*
	MB	MEXICAN BEACH PEBBLE	SAME	2-3" DIA POLISHED	4	*
	MULCH		PINE BARK MHE	PALLETS	3	*

**SYMBOL KEY**

**NOTE: ALL PLANTING AREAS TO RECEIVE AUTO IRRIGATION SYSTEM WITH 100% PERCENT COVERAGE, CONTROLLER AND RAIN SENSOR**

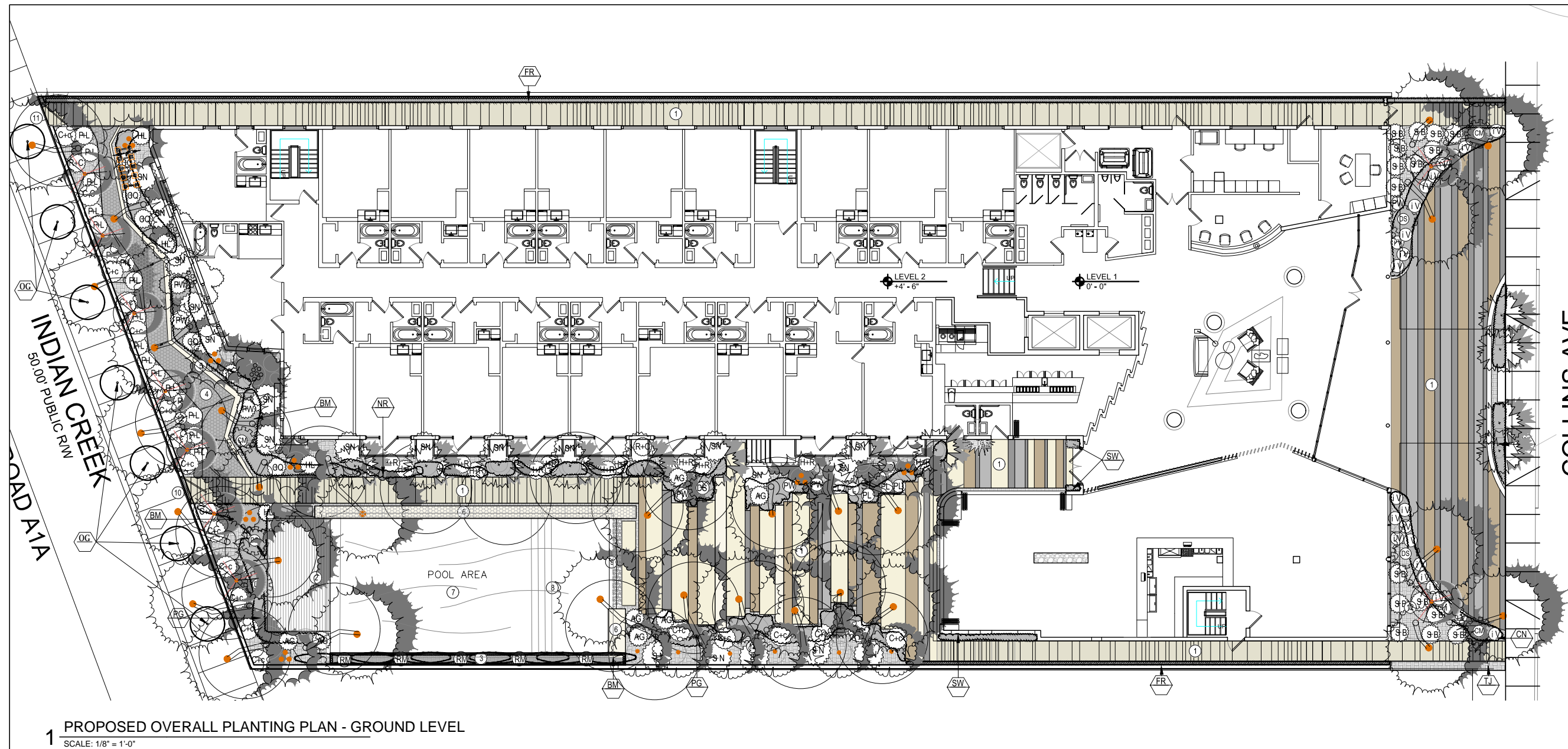
PROFESSIONAL SEAL  
 SEAL  
 VINCENT A. FILIENZI  
 LA #6667191

HISTORIC PRESERVATION BOARD  
 JOB NUMBER: 17013  
 ISSUE DATE: 06.15.2017  
 SCALE: AS NOTED

SHEET TITLE  
**PROPOSED OVERALL PLANTING PLAN GROUND LEVEL**

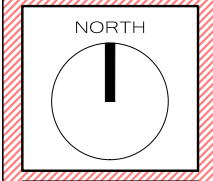
SHEET NUMBER  
**LP-1.0**

IF SHEET IS LESS THAN (24"x36") IT IS A REDUCED PRINT, SCALE ACCORDINGLY



**VINCENT FIGUENZI DESIGN**  
 LANDSCAPE ARCHITECT & PLANNER  
 F.L. REG. # 6667191  
 5832 2ND AVE  
 SUITE 414  
 MIAMI, FLORIDA  
 P: 786.346.0909  
 vfiguenzi@gmail.com  
 786.346.8800

REVISION	DESCRIPTION	DATE



**PRINCE MICHAEL  
 2618 COLLINS AVENUE, MIAMI BEACH, FL  
 HISTORIC RENOVATION**

PROFESSIONAL SEAL  
  
 VINCENT A. FIGUENZI  
 LA #6667191

HISTORIC PRESERVATION BOARD  
 JOB NUMBER: 17013  
 ISSUE DATE: 07.10.2018  
 SCALE: AS NOTED

SHEET TITLE  
**PROPOSED  
 OVERALL  
 PLANTING PLAN  
 GROUND LEVEL**

SHEET NUMBER  
**LP-1.0**  
 MODIFIED

**1 PROPOSED OVERALL PLANTING PLAN - GROUND LEVEL**  
 SCALE: 1/8" = 1'-0"

**CITY OF MIAMI BEACH  
 LANDSCAPE LEGEND**

INFORMATION REQUIRED TO BE PERMANENTLY AFFIXED TO PLANS  
 Zoning District RM-2 Lot Area 23,800 SF Acres 0.55 AC

**TREES**

A. Number of trees required per lot or net lot acre, less existing number of trees meeting minimum requirements=	28 trees x _____ net lot acres - number of existing trees=	_____	34
B. % Natives required: Number of trees provided x 30% =	_____	10	34
C. % Low maintenance / drought and salt tolerant required: Number of trees provided x 50%=	_____	17	34
D. Street Trees (maximum average spacing of 20' o.c.)	_____	5	7
E. Street tree species allowed directly beneath power lines: (maximum average spacing of 20' o.c.):	_____	N/A	_____

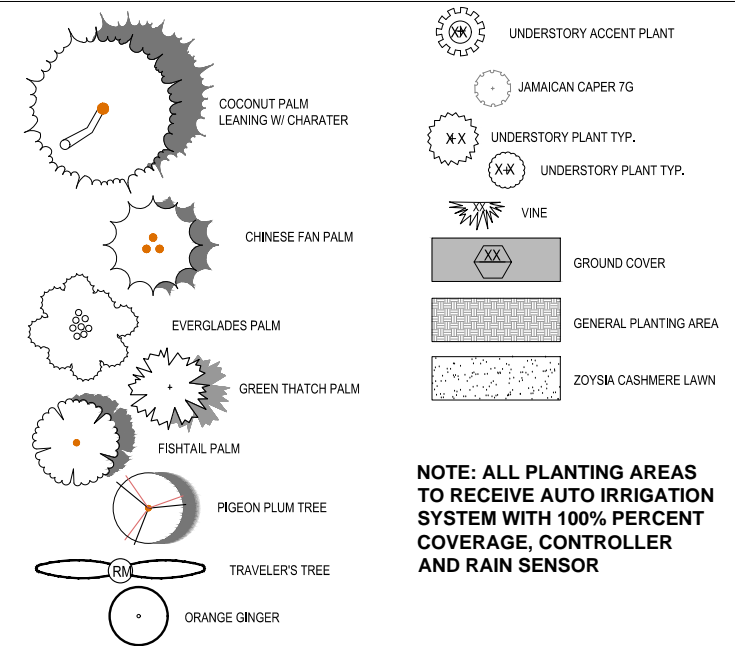
**SHRUBS**

A. Number of shrubs required: Sum of lot and street trees required x 12=	_____	408	276
B. % Native shrubs required: Number of shrubs provided x 50%=	_____	138	215

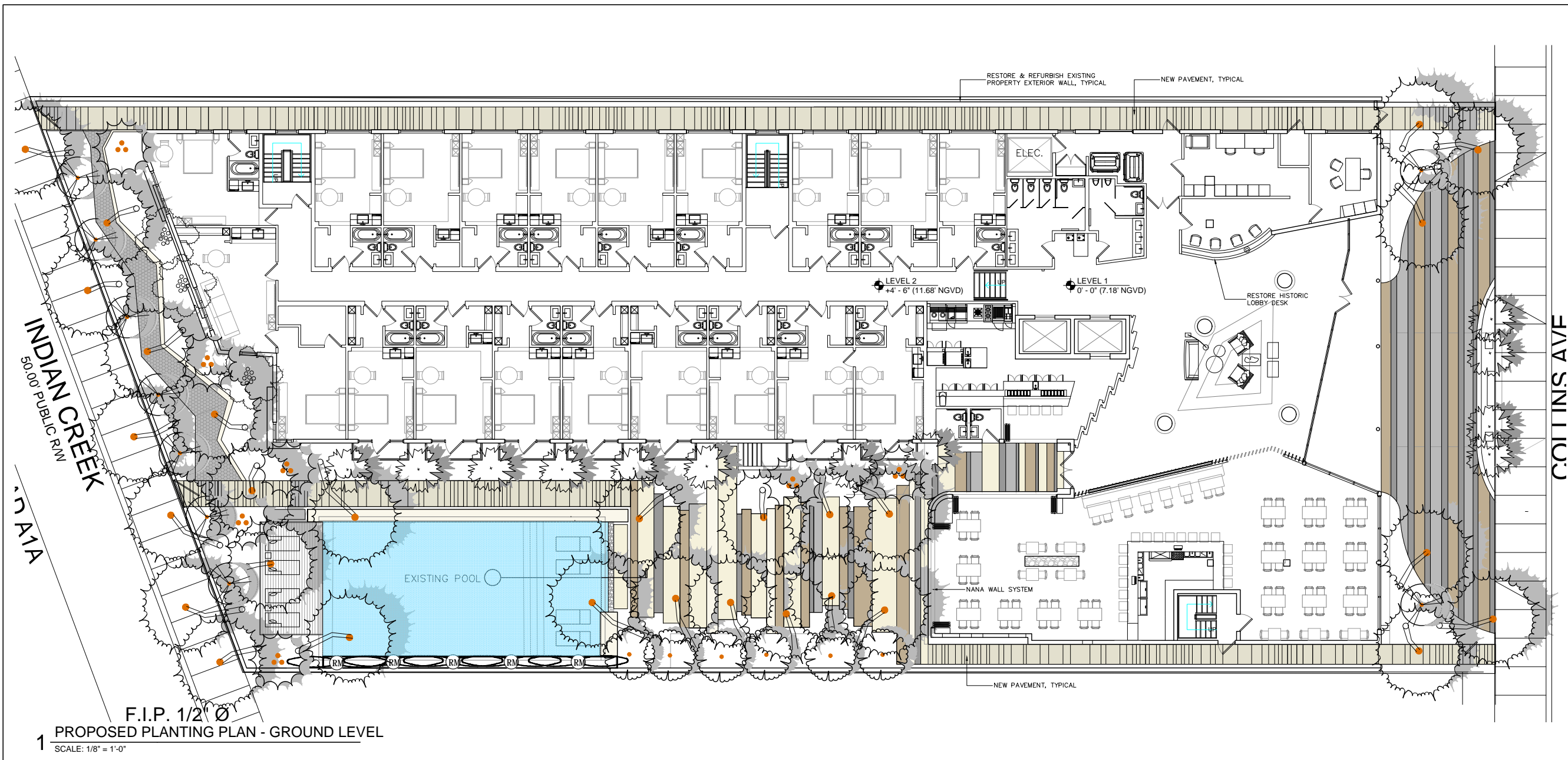
**LARGE SHRUBS OR SMALL TREES**

A. Number of large shrubs or small trees required: Number of required shrubs x 10%=	_____	_____	_____
B. % Native large shrubs or small trees required: Number of large shrubs or small trees provided x 50%=	_____	_____	_____

**SYMBOL LEGEND**

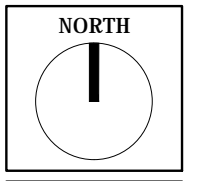


**NOTE: ALL PLANTING AREAS  
 TO RECEIVE AUTO IRRIGATION  
 SYSTEM WITH 100% PERCENT  
 COVERAGE, CONTROLLER  
 AND RAIN SENSOR**



VINCENT FILIGENZI DESIGN  
 LANDSCAPE ARCHITECT & PLANNER  
 P. BALUC #667191  
 2035 2ND AVE  
 MIAMI, FL 33137  
 P. 786.346.8008  
 www.vincentfiligenzi.com  
 10/24/2016

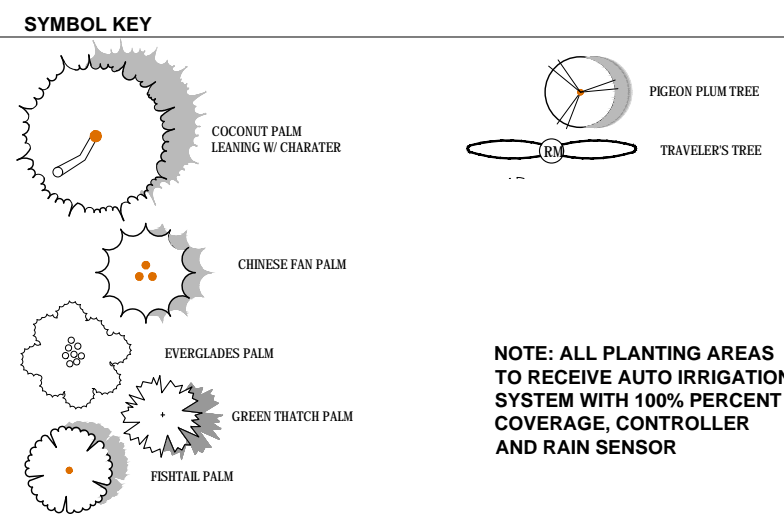
REVISION	DESCRIPTION	DATE



PRINCE MICHAEL  
 2618 COLLINS AVENUE, MIAMI BEACH, FL  
 HISTORIC RENOVATION

**PLANT LIST**

QTY	BOTANICAL NAME	COMMON NAME	SPECIFICATION	QTY	NATIVE/ DROUGHT
<b>TREES &amp; PALMS</b>					
	ACOELORRHAPHE WRIGHTII	PAUROTIS EVERGLADES PALM	20'-22' OA HT Heavy Clumps	3	*
	CARYOTIS MITIS	GIANT FISHTAIL PALM	22'-24' OA HT Heavy Clumps	6	*
	COCCOLOBA DIVERSIFOLIA	PIGEON PLUM TREE	FG 10' HT 2-3" DBH	7	*
	COCCOLOBA UVIFERA	SEA GRAPE TREE	12'-14' HT X 10' W. MULTI CHARACTER	3	*
	COCO NUCIFERA	COCONUT PALM	FG 18'-26' Staggered Hts. Leaning w/ Character	30	*
	LIVESTONIA CHINENSIS	CHINESE FAN PALM	12' OA HT DBL	6	*
	MYRICA FRAGRANS	SIMPSON STOPPER TREE	10' HT X 8' W. MULTI TRUNK	23	*
	THRINAX RADIATA	THATCH PALM	14'-16' OA HT DBL	12	*



**NOTE: ALL PLANTING AREAS TO RECEIVE AUTO IRRIGATION SYSTEM WITH 100% PERCENT COVERAGE, CONTROLLER AND RAIN SENSOR**

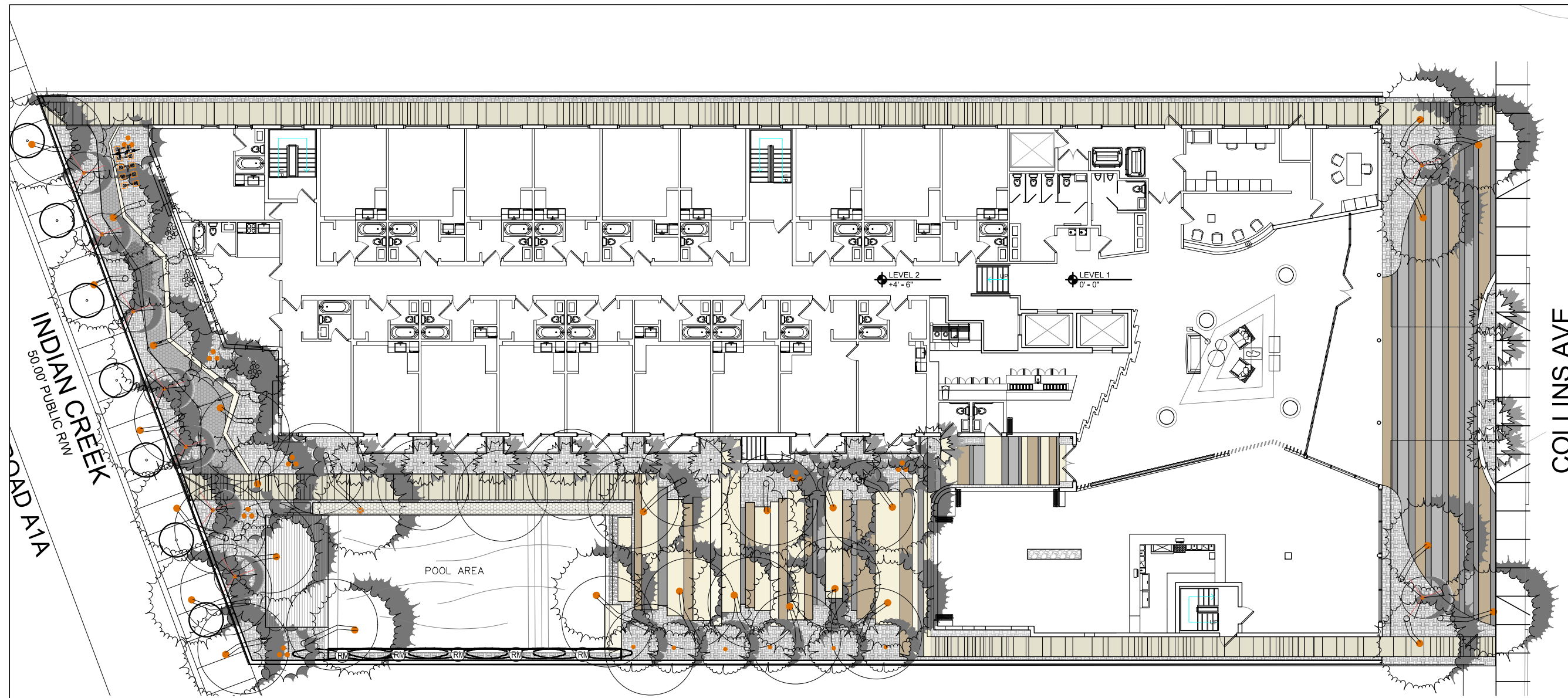
PROFESSIONAL SEAL  
 SEAL  
 VINCENT A. FILIGENZI  
 LA #667191

HISTORIC PRESERVATION BOARD  
 JOB NUMBER: 17013  
 ISSUE DATE: 06.15.2017  
 SCALE: AS NOTED

SHEET TITLE  
 PROPOSED CANOPY PLANTING PLAN GROUND LEVEL

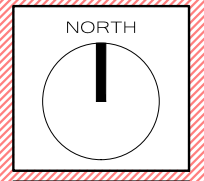
SHEET NUMBER  
**LP-1.1**

IF SHEET IS LESS THAN (24"x36") IT IS A REDUCED PRINT, SCALE ACCORDINGLY



**VINCENT FIGENZI DESIGN**  
 LANDSCAPE ARCHITECT & PLANNER  
 F.L.R.A.I.C. #667191  
 2632 2ND AVE  
 SUITE 414  
 MIAMI, FLORIDA  
 P: 786.346.0909  
 vfigenzi@gmail.com  
 786.346.8800

REVISION	DESCRIPTION	DATE



**PRINCE MICHAEL  
 2618 COLLINS AVENUE, MIAMI BEACH, FL  
 HISTORIC RENOVATION**

PROFESSIONAL SEAL  
  
 VINCENT A. FIGENZI  
 LA #667191

HISTORIC PRESERVATION BOARD  
 JOB NUMBER: 17013  
 ISSUE DATE: 07.10.2018  
 SCALE: AS NOTED

SHEET TITLE  
**PROPOSED  
 CANOPY  
 PLANTING PLAN  
 GROUND LEVEL**

SHEET NUMBER  
**LP-1.1**  
 MODIFIED

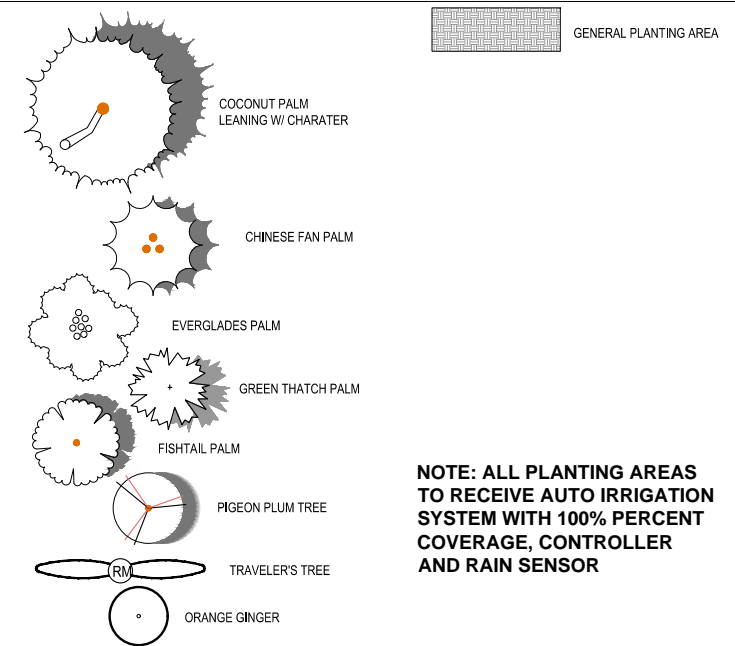
**1 PROPOSED PLANTING PLAN - GROUND LEVEL**  
 SCALE: 1/8" = 1'-0"

**PLANT LIST**

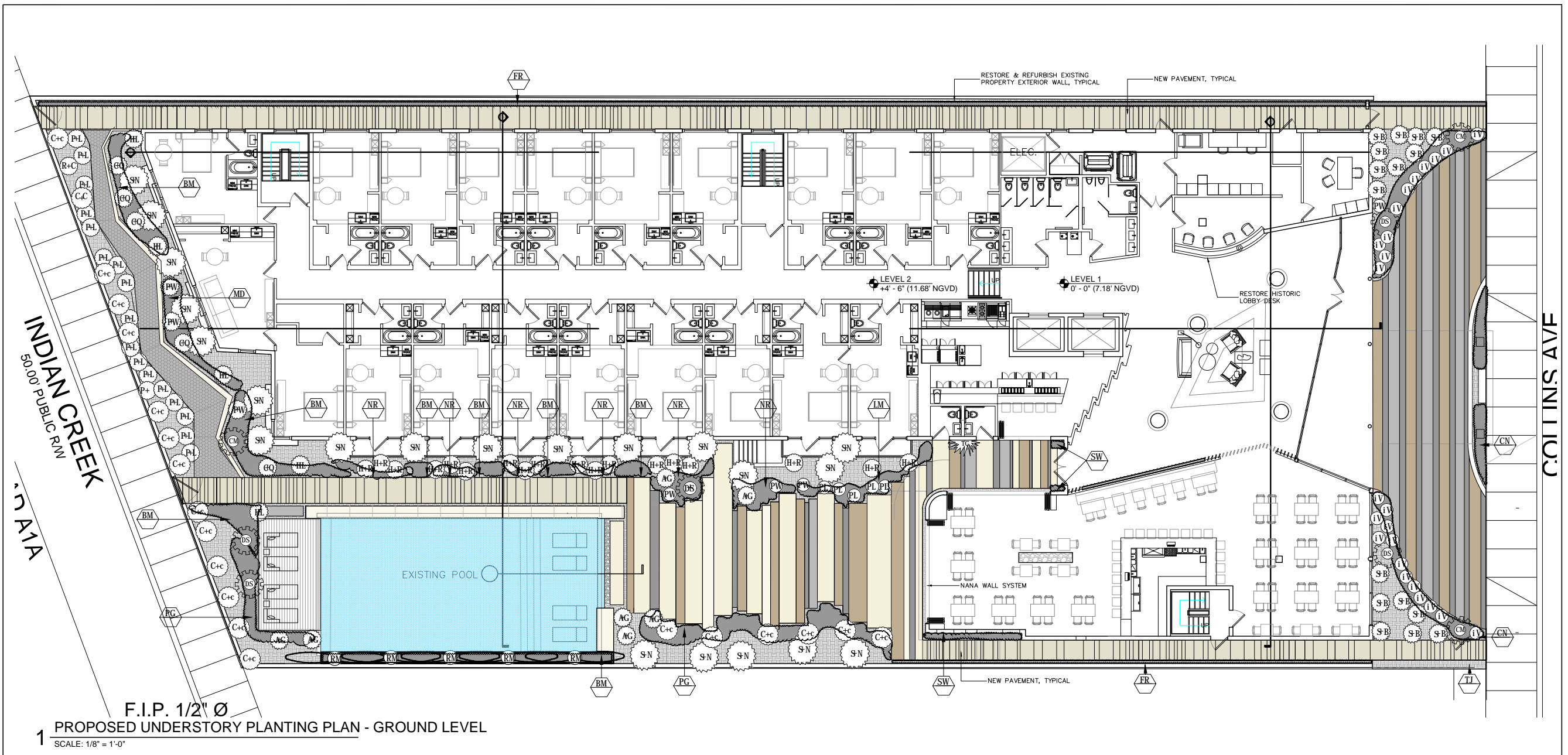
QTY	BOTANICAL NAME	COMMON NAME	SPECIFICATION	QTY	NATIVE/ DROUGHT
<b>TREES &amp; PALMS</b>					
	ACOELORRHAPHE WRIGHTII	PAUROTIS EVERGLADES PALM	20'-22' OA HT Heavy Clumps	3	*
	CARYOTIS MITIS	GIANT FISHTAIL PALM	22'-24' OA HT Heavy Clumps	6	*
	COCCOLOBA DIVERSIFOLIA	PIGEON PLUM TREE	FG 10' HT 2-3" DBH	7	*
	COCCOLOBA UVIFERA	SEA GRAPE TREE	12'-14' HT X 10' W. MULTI CHARACTER	4	*
	COCO NUCIFERA	COCONUT PALM	FG 18'-26' Staggered Hts. Leaning w/ Character	30	*
	LIVESTONIA CHINENSIS	CHINESE FAN PALM	12' OA HT DBL	6	*
	MYRICA FRAGRANS	SIMPSON STOPPER TREE	10' HT X 8' W. MULTI TRUNK	23	*
	THRINAX RADIATA	THATCH PALM	14'-16' OA HT DBL	12	*
	CORDIA SEBESTENA	ORANGE GINGER	4' SP. DBH 3"-4" @ 15'	4	*
<b>SHRUBS &amp; ACCENTS</b>					
CE	ALOCASIA MACRORRHIZA 'BORNEO GIANT'	ELEPHANT EAR	15 GA 5' HT	7	
sce legend	CAPPARIS CYNOPHALLOPHORA	JAMAICAN CAPER	15 GAL @ 24" OC (ROOF)	196	*
CC	CAPPARIS CYNOPHALLOPHORA	JAMAICAN CAPER	26 GAL @ 48" OC (GROUND)	11	*
CM	COPERNICIA MACROGLOSSA	COPERNICIA MACROGLOSSA	4' x 4'	3	*
DS	DIOON SPINULOSOMEDUULE	CYCAD	25 GA 6x6"	5	*
HR	HELICONIA ROSTRATA	HELICONIA	7 GA	18	
IV	ILEX VOMITORIA	STOKES DWARF	15 GAL @ 36" OC	24	*
PW	PHILODENDRON WEEKS HYBRID RED	PHILODENDRON WEEKS HYBRID	2' HT 7 GA	7	
EM	RAVENALIA MADEGASCARISSENSIS	TRAVELLERS TREE	FG 12'-14' HT. OA.	5	

<b>GROUNDCOVERS &amp; VINES</b>				
CL	CLUSIA NANA	DWARF PITCH APPLE	3 gal @ 12" OC	35
PG	CURCULIGO CAPITULATA	PALM GRASS	3 gal @ 18" OC	65
DB	DIETES BICOLOR	AFRICAN IRIS	3 gal @ 18" OC	165
EL	ERNODIA LITORALIS	GOLDEN CREEPER	3 gal @ 18" OC	96
FR	FICUS REPENS	CREEPING FIG VINE	1 GAL @ 12" OC	221
LM	LIRIOPE MUSCARI	EVERGREEN GIANT	3 gal @ 18" OC	155
Md	MONSTERA DELICIOSA	SWISS CHEESE PLANT	3 gal @ 24" OC	53
NR	NEOMARICA CAERULEA 'REGINA'	GIANT APOSTLES IRIS	3 gal @ 12" OC	75
Pb	PHILODENDRON BURLE MARX	BURLE MARX	3 gal @ 18" OC	84
PO	PORTULACA GRANDIFLORA	ROSE MOSS PURSLANE	1 GAL @ 12" OC	551
SW	SANSEVIERIA MASONIANA	WHALES FIN	7 gal @ 18" OC	18
SB	SPARTINA BAKERI	SAND CORD GRASS	3 gal @ 24" OC	16
TG	THUNBERGIA GRANDIFLORA	BLUE SKY VINE	3 gal TRELLIS	3
<b>LAWN, MULCH &amp; MISC ITEMS</b>				
LAWN	ZOYSIA JAPONICA	CASHMERE ZOYSIA GRASS	SOD PALLET	1
MB	MEXICAN BEACH PEBBLE	SAME	2-3" DIA POLISHED	4
MULCH		PINE BARK MINI	PALLETS	3

**SYMBOL LEGEND**

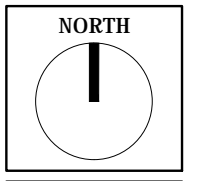


**NOTE: ALL PLANTING AREAS TO RECEIVE AUTO IRRIGATION SYSTEM WITH 100% PERCENT COVERAGE, CONTROLLER AND RAIN SENSOR**



VINCENT FILIGENZI DESIGN  
 LANDSCAPE ARCHITECT & PLANNER  
 P. BALAC #807191  
 2035 2ND AVE  
 MIAMI, FL 33137  
 P. 786.46.8000  
 www.vincentfiligenzi.com  
 10/20/2016

REVISION	DESCRIPTION	DATE



PRINCE MICHAEL  
 2618 COLLINS AVENUE, MIAMI BEACH, FL  
 HISTORIC RENOVATION

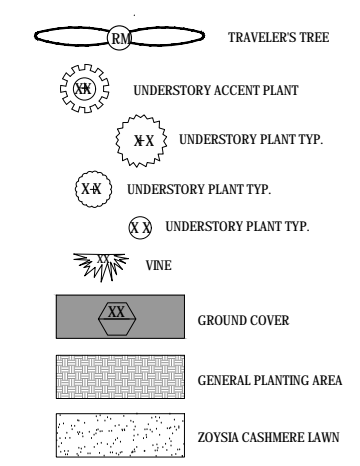
1 F.I.P. 1/2" Ø  
 PROPOSED UNDERSTORY PLANTING PLAN - GROUND LEVEL  
 SCALE: 1/8" = 1'-0"

PLANT LIST

SHRUBS & ACCENTS			
CE	ALOCASIA MACRORRHIZA 'BORNEO GIANT'	ELEPHANT EAR	15 GA 5' HT 7
see legend	CAPPARIS CYNOPHALLOPHORA	JAMAICAN CAPER	15 GAL @ 24" OC (ROOF) 196 *
CC	CAPPARIS CYNOPHALLOPHORA	JAMAICAN CAPER	25 GAL @ 48" OC (GROUND) 11 *
CM	COPERNICIA MACROGLOSSA	COPERNICIA MACROGLOSSA	4'x4' 3 *
DS	DIDON SPINULOSOMEDUULE	CYCAD	25 GA 6x6' 5 *
HR	HELICONIA ROSTRATA	HELICONIA	7 GA 18
IV	ILEX VOMITORIA	STOKES DWARF	15 GAL @ 36" OC 24 *
PW	PHILODENDRON WEEKS HYBRID RED	PHILODENDRON WEEKS HYBRID	2' HT 7 GA 7
EM	RAVENALLA MADESGASCARIENSIS	TRAVELLERS TREE	FG 12-14' HT. OA. 5

GROUNDCOVERS & VINES			
CL	CLUSIA NANA	DWARF PITCH APPLE	3 gal @ 12" OC 35 *
PG	CURCULIGO CAPITULATA	PALM GRASS	3 gal @ 18" OC 55
DB	DIETES BICOLOR	AFRICAN IRIS	3 gal @ 18" OC 165 *
EL	ERNODIA LITORALIS	GOLDEN CREEPER	3 gal @ 18" OC 96 *
FR	FICUS REPENS	CREEPING FIG VINE	1 GAL @ 12" OC 221 *
LM	LIRIOPE MUSCARI	EVERGREEN GIANT	3 gal @ 18" OC 155
Md	MONSTERA DELICIOSA	SWISS CHEESE PLANT	3 gal @ 24" OC 53 *
NR	NEOMARICA CAERULEA 'REGINA'	GIANT APOSTLES IRIS	3 gal @ 12" OC 75 *
Pb	PHILODENDRON BURLE MARX	BURLE MARX	3 gal @ 18" OC 84
PO	PORTULACA GRANDIFLORA	ROSE MOSS PURSLANE	1 GAL @ 12" OC 551 *
SW	SANSEVIERIA MASONIANA	WHALES FIN	7 gal @ 18" OC 18 *
SB	SPARTINA BAKERI	SAND CORD GRASS	3 gal @ 24" OC 16 *
TG	THUNBERGIA GRANDIFLORA	BLUE SKY VINE	3 gal TRELLIS 3 *
LAWN, MULCH & MISC ITEMS			
LAWN	ZOYSIA JAPONICA	CASHMERE ZOYSIA GRASS	SOD PALLET 1
MB	MEXICAN BEACH PEBBLE	SAME	2-3" DIA POLISHED 4
MULCH		PINE BARK MINI	PALLETS 3

SYMBOL KEY



NOTE: ALL PLANTING AREAS TO RECEIVE AUTO IRRIGATION SYSTEM WITH 100% PERCENT COVERAGE, CONTROLLER AND RAIN SENSOR

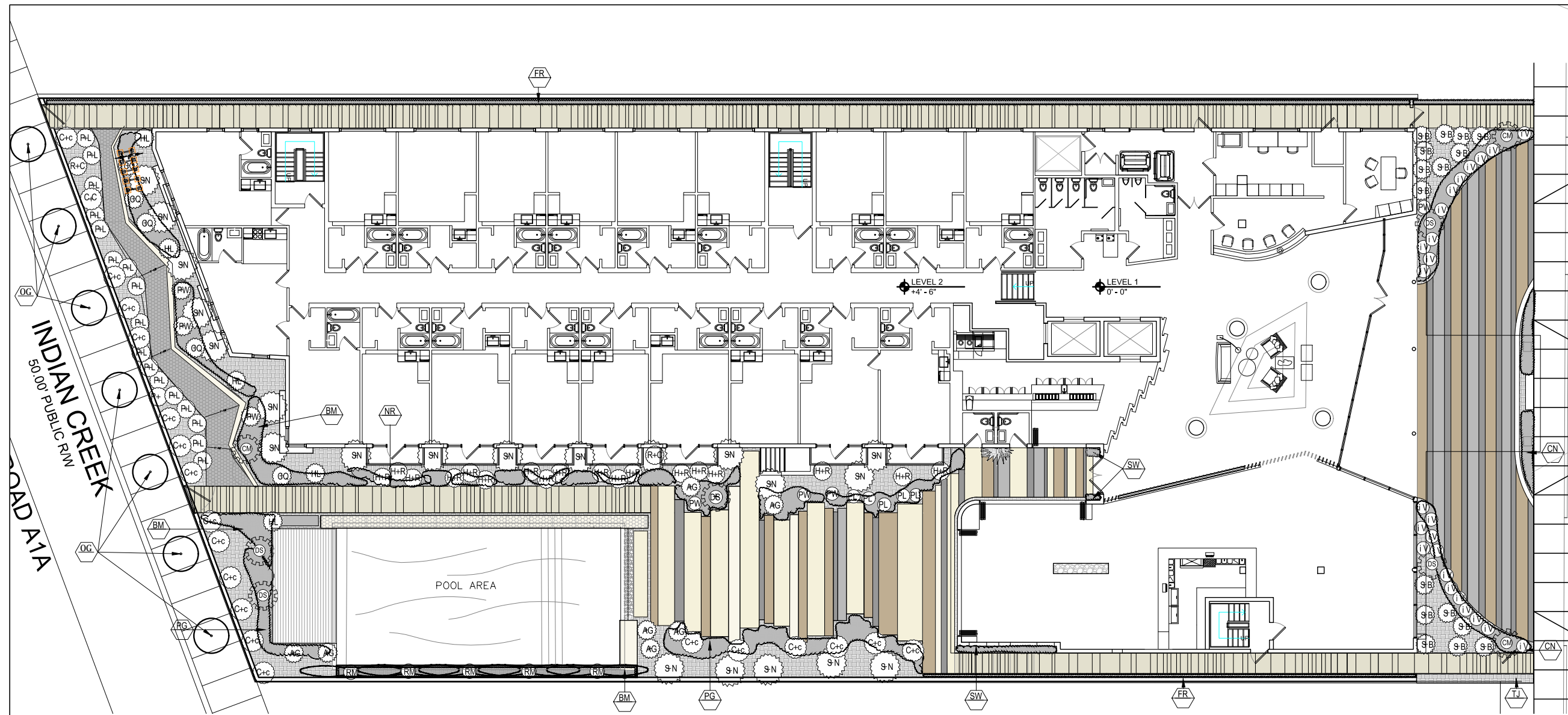
PROFESSIONAL SEAL  
 SEAL  
 VINCENT A. FILIGENZI  
 LA #6667191

HISTORIC PRESERVATION BOARD  
 JOB NUMBER: 17013  
 ISSUE DATE: 06.15.2017  
 SCALE: AS NOTED

SHEET TITLE  
 PROPOSED UNDERSTORY PLANTING PLAN GROUND LEVEL

SHEET NUMBER  
 LP-1.2

IF SHEET IS LESS THAN (24"x36") IT IS A REDUCED PRINT, SCALE ACCORDINGLY



COLLINS AVE

INDIAN CREEK  
50,000' PUBLIC RM  
ROAD A1A

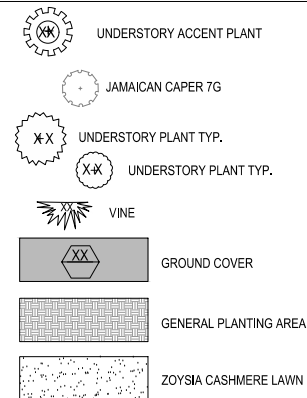
1 PROPOSED UNDERSTORY PLANTING PLAN - GROUND LEVEL  
SCALE: 1/8" = 1'-0"

PLANT LIST

QTY	BOTANICAL NAME	COMMON NAME	SPECIFICATION	QTY	NATIVE/ DROUGHT
<b>TREES &amp; PALMS</b>					
	ACOELORRHAPHE WRIGHTII	PAUROTIS EVERGLADES PALM	20'-22' OA HT Heavy Clumps	3	*
	CARYOTIS MITIS	GIANT FISHTAIL PALM	22'-24' OA HT Heavy Clumps	6	*
	COCCOLOBA DIVERSIFOLIA	PIGEON PLUM TREE	FG 10' HT 2-3" DBH	7	*
	COCCOLOBA UVIFERA	SEA GRAPE TREE	12'-14' HT X 10" W. MULTI CHARACTER	4	*
	COCO NUCIFERA	COCONUT PALM	FG 18'-26' Staggered Hts. Lean/lna w/ Character	30	*
	LIVESTONIA CHINENSIS	CHINESE FAN PALM	12' OA HT DBL	6	*
	MYRICA FRAGRANS	SIMPSON STOPPER TREE	10' HT X 8" W. MULTI TRUNK	23	*
	THRINAX RADIATA	THATCH PALM	14'-16' OA HT DBL	12	*
	CORDIA SEBESTENA	ORANGE GINGER	4' SP, DBH 3"-4" @ 15'	4	*
<b>SHRUBS &amp; ACCENTS</b>					
CE	ALOCASIA MACRORRHIZA 'BORNEO GIANT'	ELEPHANT EAR	15 GA 5' HT	7	
sce legend	CAPPARIS CYNOPHALLOPHORA	JAMAICAN CAPER	15 GAL @ 24" OC (ROOF)	196	*
CC	CAPPARIS CYNOPHALLOPHORA	JAMAICAN CAPER	26 GAL @ 48" OC (GROUND)	11	*
CM	COPERNICIA MACROGLOSSA	COPERNICIA MACROGLOSSA	4' x 4'	3	*
DS	DIOON SPINULOSOMEDUULE	CYCAD	25 GA 6x6"	5	*
HR	HELICONIA ROSTRATA	HELICONIA	7 GA	18	*
IV	ILEX VOMITORIA	STOKES DWARF	15 GAL @ 36" OC	24	*
PW	PHILODENDRON WEEKS HYBRID RED	PHILODENDRON WEEKS HYBRID	2' HT 7 GA	7	
EM	RAVENALIA MADESGASCARISSENSIS	TRAVELLERS TREE	FG 12'-14' HT. OA.	5	

GROUNDCOVERS & VINES				
CL	CLUSIA NANA	DWARF PITCH APPLE	3 gal @ 12" OC	35
PG	CURCULIGO CAPITULATA	PALM GRASS	3 gal @ 18" OC	65
DB	DIETES BICOLOR	AFRICAN IRIS	3 gal @ 18" OC	165
EL	ERNODIA LITORALIS	GOLDEN CREEPER	3 gal @ 18" OC	96
FR	FICUS REPENS	CREEPING FIG VINE	1 GAL @ 12" OC	221
LM	LIRIOPE MUSCARI	EVERGREEN GIANT	3 gal @ 18" OC	155
Md	MONSTERA DELICIOSA	SWISS CHEESE PLANT	3 gal @ 24" OC	53
NR	NEOMARICA CAERULEA 'REGINA'	GIANT APOSTLES IRIS	3 gal @ 12" OC	75
Pb	PHILODENDRON BURLE MARX	BURLE MARX	3 gal @ 18" OC	84
PO	PORTULACA GRANDIFLORA	ROSE MOSS PURSLANE	1 GAL @ 12" OC	551
SW	SANSEVIERIA MASONIANA	WHALES FIN	7 gal @ 18" OC	18
SB	SPARTINA BAKERI	SAND CORD GRASS	3 gal @ 24" OC	16
TG	THUNBERGIA GRANDIFLORA	BLUE SKY VINE	3 gal TRELLIS	3
<b>LAWN, MULCH &amp; MISC ITEMS</b>				
LAWN	ZOYSIA JAPONICA	CASHMERE ZOYSIA GRASS	SOD PALLET	1
MB	MEXICAN BEACH PEBBLE	SAME	2-3" DIA POLISHED	4
MULCH		PINE BARK MINI	PALLETS	3

SYMBOL LEGEND



NOTE: ALL PLANTING AREAS TO RECEIVE AUTO IRRIGATION SYSTEM WITH 100% PERCENT COVERAGE, CONTROLLER AND RAIN SENSOR

VINCENT FIGUENZI DESIGN  
LANDSCAPE ARCHITECT & PLANNER  
FL. REG. NO. 268791  
2632 SW 2ND AVE  
SUITE 414  
MIAMI, FLORIDA  
P: 786.346.8999  
vfiguenzi@vfiguenzidesign.com  
786.346.8993

REVISION	DESCRIPTION	DATE

NORTH

PRINCE MICHAEL  
2618 COLLINS AVENUE, MIAMI BEACH, FL  
HISTORIC RENOVATION

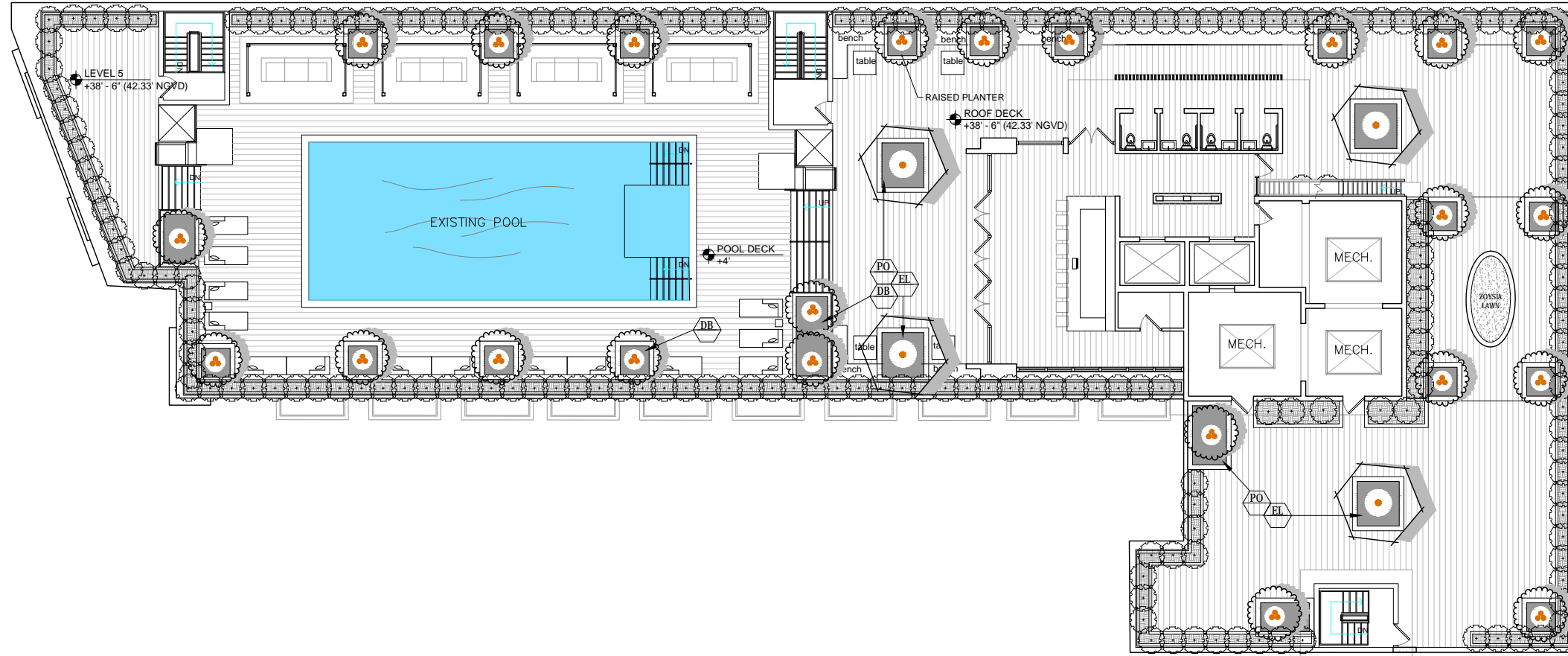
PROFESSIONAL SEAL  
VINCENT A. FIGUENZI  
LA #6667191

HISTORIC PRESERVATION BOARD  
JOB NUMBER: 17013  
ISSUE DATE: 07.10.2018  
SCALE: AS NOTED

SHEET TITLE  
PROPOSED UNDERSTORY PLANTING PLAN GROUND LEVEL

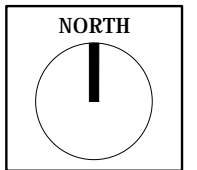
SHEET NUMBER  
LP-1.2  
MODIFIED





VINCENT FILIGENZI DESIGN  
 LANDSCAPE ARCHITECT & PLANNER  
 P. BALUC #667191  
 2035 2ND AVE  
 MIAMI, FL 33137  
 P. 786.346.0000  
 www.vincentfiligenzi.com  
 10/20/2017

REVISION	DESCRIPTION	DATE



PRINCE MICHAEL  
 2618 COLLINS AVENUE, MIAMI BEACH, FL  
 HISTORIC RENOVATION

1 PROPOSED OVERALL PLANTING PLAN - ROOF LEVEL  
 SCALE: 1/8" = 1'-0"

**PLANT LIST**

SYMBOL	PLANT NAME	QUANTITY	NOTES
CL	CLUSIA NANA	35	*
PG	CURCULIGO CAPITULATA	65	
DB	DIETES BICOLOR	165	*
EL	ERNODIA LITORALIS	96	*
FR	FIGUS REPENS	221	*
LM	LIRIOPE MUSCARI	155	
Md	MONSTERA DELICIOSA	53	*
NR	NEOMARICA CAERULEA 'REGINA'	75	*
Pb	PHILODENDRON BURLE MARX	84	
PO	PORTULACA GRANDIFLORA	551	*
SW	SANSEVIERIA MASONIANA	18	*
SB	SPARTINA BAKERI	16	*
TG	THUNBERGIA GRANDIFLORA	3	*

GROUNDCOVERS & VINES				
CL	CLUSIA NANA	DWARF PITCH APPLE	3 gal @ 12" OC	35 *
PG	CURCULIGO CAPITULATA	PALM GRASS	3 gal @ 18" OC	65
DB	DIETES BICOLOR	AFRICAN IRIS	3 gal @ 18" OC	165 *
EL	ERNODIA LITORALIS	GOLDEN CREEPER	3 gal @ 18" OC	96 *
FR	FIGUS REPENS	CREEPING FIG VINE	1 GAL @ 12" OC	221 *
LM	LIRIOPE MUSCARI	EVERGREEN GIANT	3 gal @ 18" OC	155
Md	MONSTERA DELICIOSA	SWISS CHEESE PLANT	3 gal @ 24" OC	53 *
NR	NEOMARICA CAERULEA 'REGINA'	GIANT APOSTLES IRIS	3 gal @ 12" OC	75 *
Pb	PHILODENDRON BURLE MARX	BURLE MARX	3 gal @ 18" OC	84
PO	PORTULACA GRANDIFLORA	ROSE MOSS PURSLANE	1 GAL @ 12" OC	551 *
SW	SANSEVIERIA MASONIANA	WHALES FIN	7 gal @ 18" OC	18 *
SB	SPARTINA BAKERI	SAND CORD GRASS	3 gal @ 24" OC	16 *
TG	THUNBERGIA GRANDIFLORA	BLUE SKY VINE	3 gal TRELIS	3 *

LAWN, MULCH & MISC ITEMS				
LAWN	ZOYSIA JAPONICA	CASHMERE ZOYSIA GRASS	SOD PALLET	1
MB	MEXICAN BEACH PEBBLE	SAME	2-3" DIA POLISHED	4
MULCH		PINE BARK MINI	PALLETS	3

**SYMBOL KEY**

**NOTE: ALL PLANTING AREAS TO RECEIVE AUTO IRRIGATION SYSTEM WITH 100% PERCENT COVERAGE, CONTROLLER AND RAIN SENSOR**

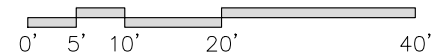
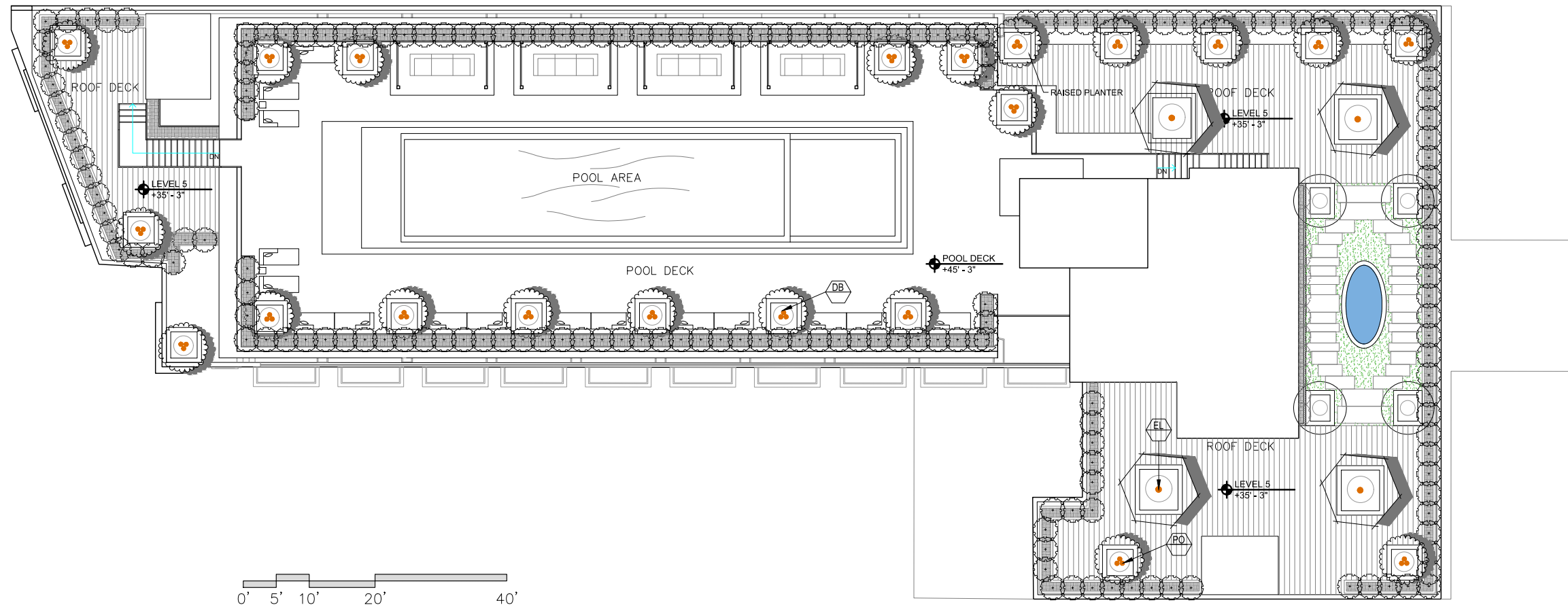
PROFESSIONAL SEAL  
 SEAL  
 VINCENT A. FILIGENZI  
 LA #6667191

HISTORIC PRESERVATION BOARD  
 JOB NUMBER: 17013  
 ISSUE DATE: 06.15.2017  
 SCALE: AS NOTED

SHEET TITLE  
 PROPOSED OVERALL PLANTING PLAN ROOF LEVEL

SHEET NUMBER  
**LP-2.0**

IF SHEET IS LESS THAN (24"x36") IT IS A REDUCED PRINT, SCALE ACCORDINGLY



1 PROPOSED OVERALL PLANTING PLAN - ROOF POOL LEVEL  
SCALE: 1/8" = 1'-0"

**PLANT LIST**

QTY	BOTANICAL NAME	COMMON NAME	SPECIFICATION	QTY	NATIVE/ DROUGHT
<b>TREES &amp; PALMS</b>					
	ACOELORRHAPHE WRIGHTII	PAUROTIS EVERGLADES PALM	20'-22" OA HT Heavy Clumps	3	*
	CARYOTIS MITIS	GIANT FISHTAIL PALM	22'-24" OA HT Heavy Clumps	6	*
	COCCOLOBA DIVERSIFOLIA	PIGEON PLUM TREE	FG 10' HT 2-3" DBH	7	*
	COCCOLOBA UVIFERA	SEA GRAPE TREE	12'-14" HT X 10" W. MULTI CHARACTER	4	*
	COCO NUCIFERA	COCONUT PALM	FG 18'-26' Staggered Hts. Leaning w/ Character	30	*
	LIVESTONIA CHINENSIS	CHINESE FAN PALM	12' OA HT DBL	6	*
	MYRICA FRAGRANS	SIMPSON STOPPER TREE	10' HT X 8" W. MULTI TRUNK	23	*
	THRINAX RADIATA	THATCH PALM	14'-16" OA HT DBL	12	*
	CORDIA SEBESTENA	ORANGE GINGER	4' SP, DBH 3"-4" @ 15'	4	*
<b>SHRUBS &amp; ACCENTS</b>					
CE	ALOCASIA MACRORRHIZA 'BORNEO GIANT'	ELEPHANT EAR	15 GA 5' HT	7	
sce legend	CAPPARIS CYNOPHALLOPHORA	JAMAICAN CAPER	15 GAL @ 24" OC (ROOF)	196	*
CC	CAPPARIS CYNOPHALLOPHORA	JAMAICAN CAPER	26 GAL @ 48" OC (GROUND)	11	*
CM	COPERNICIA MACROGLOSSA	COPERNICIA MACROGLOSSA	4'x4'	3	*
DS	DIOON SPINULOSOMEDUULE	CYCAD	25 GA 6x6'	5	*
HR	HELICONIA ROSTRATA	HELICONIA	7 GA	18	
IV	ILEX VOMITORIA	STOKES DWARF	15 GAL @ 36" OC	24	*
PW	PHILODENDRON WEEKS HYBRID RED	PHILODENDRON WEEKS HYBRID	2' HT 7 GA	7	
EM	RAVENALIA MADESGASCARISSENSIS	TRAVELLERS TREE	FG 12'-14' HT. OA.	5	

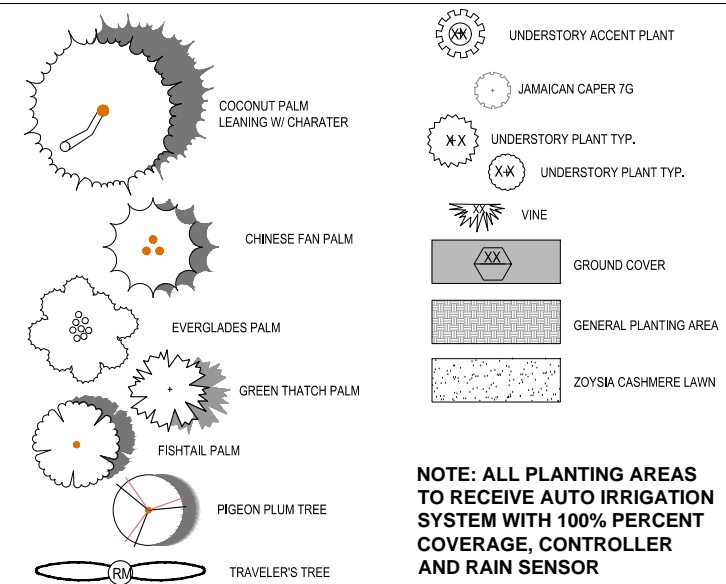
**GROUNDCOVERS & VINES**

CL	CLUSIA NANA	DWARF PITCH APPLE	3 gal @ 12" OC	35	*
PG	CURCULIGO CAPITULATA	PALM GRASS	3 gal @ 18" OC	65	
DB	DIETES BICOLOR	AFRICAN IRIS	3 gal @ 18" OC	165	*
EL	ERNODIA LITORALIS	GOLDEN CREEPER	3 gal @ 18" OC	96	*
FR	FICUS REPENS	CREEPING FIG VINE	1 GAL @ 12" OC	221	*
LM	LIRIOPE MUSCARI	EVERGREEN GIANT	3 gal @ 18" OC	155	*
Md	MONSTERA DELICIOSA	SWISS CHEESE PLANT	3 gal @ 24" OC	53	*
NR	NEOMARICA CAERULEA 'REGINA'	GIANT APOSTLES IRIS	3 gal @ 12" OC	75	*
Pb	PHILODENDRON BURLE MARX	BURLE MARX	3 gal @ 18" OC	84	*
PO	PORTULACA GRANDIFLORA	ROSE MOSS PURSLANE	1 GAL @ 12" OC	551	*
SW	SANSEVIERIA MASONIANA	WHALES FIN	7 gal @ 18" OC	18	*
SB	SPARTINA BAKERI	SAND CORD GRASS	3 gal @ 24" OC	16	*
TG	THUNBERGIA GRANDIFLORA	BLUE SKY VINE	3 gal TRELIS	3	*

**LAWN, MULCH & MISC ITEMS**

LAWN	ZOYSIA JAPONICA	CASHMERE ZOYSIA GRASS	SOD PALLET	1	
MB	MEXICAN BEACH PEBBLE	SAME	2-3" DIA POLISHED	4	
MULCH		PINE BARK MINI	PALLETS	3	

**SYMBOL LEGEND**



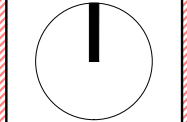
**NOTE: ALL PLANTING AREAS TO RECEIVE AUTO IRRIGATION SYSTEM WITH 100% PERCENT COVERAGE, CONTROLLER AND RAIN SENSOR**

VINCENT FIGUENZI DESIGN

LANDSCAPE ARCHITECT & PLANNER  
FL REG. # 6667191  
2632 2ND AVE  
SUITE 414  
MIAMI, FLORIDA  
P: 786.346.0909  
vfiguenzi.com

REVISION	DESCRIPTION	DATE

NORTH



PRINCE MICHAEL  
2618 COLLINS AVENUE, MIAMI BEACH, FL  
HISTORIC RENOVATION

PROFESSIONAL SEAL



HISTORIC PRESERVATION BOARD

JOB NUMBER: 17013  
ISSUE DATE: 07.10.2018  
SCALE: AS NOTED

PROPOSED OVERALL PLANTING PLAN ROOF POOL LEVEL

SHEET NUMBER  
**LP-2.0**  
MODIFIED



SEA GRAPE SPECIMEN



PIGEON PLUM TREE



SIMPSON STOPPER TREE



THRINAX RADIATA



TRAVELER'S TREE



CHINESE FAN PALM DOUBLE



COCONUT PALM LEANING CHARACTER



POOL PATTERN



ELEPHANT EAR



WHITE BIRD OF PARADISE



COPERNICIA MACROGLOSSA



GREEN THATCH PALM



EVERGLADES PALM



BAHAMA COFFEE



HELICONIA ROSTRATA



BLUE SKY VINE



GIANT APOSTLES IRIS



PHILODENDRON WEEKS HYBRID



JAMAICAN CAPER



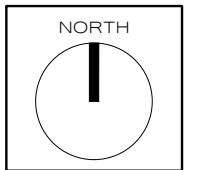
SPARTINA BAKERI



DWARF ILEX VOMITORIA

VINCENT FILIGENZI DESIGN  
LANDSCAPE ARCHITECT & PLANNER  
P.L.B.A.L.C. #667191  
2035 2ND AVE  
MIAMI, FL 33137  
P: 786.46.8008  
www.vincentfiligenzi.com  
1024202020

REVISION	DESCRIPTION	DATE



PRINCE MICHAEL  
2618 COLLINS AVENUE, MIAMI BEACH, FL  
HISTORIC RENOVATION

PROFESSIONAL SEAL  
SEAL  
VINCENT A. FILIGENZI  
LA #6667191

HISTORIC PRESERVATION BOARD  
JOB NUMBER: 17013  
ISSUE DATE: 06.15.2017  
SCALE: AS NOTED

SHEET TITLE  
PROPOSED PLANT MATERIAL IMAGES

SHEET NUMBER  
LP-3.0