



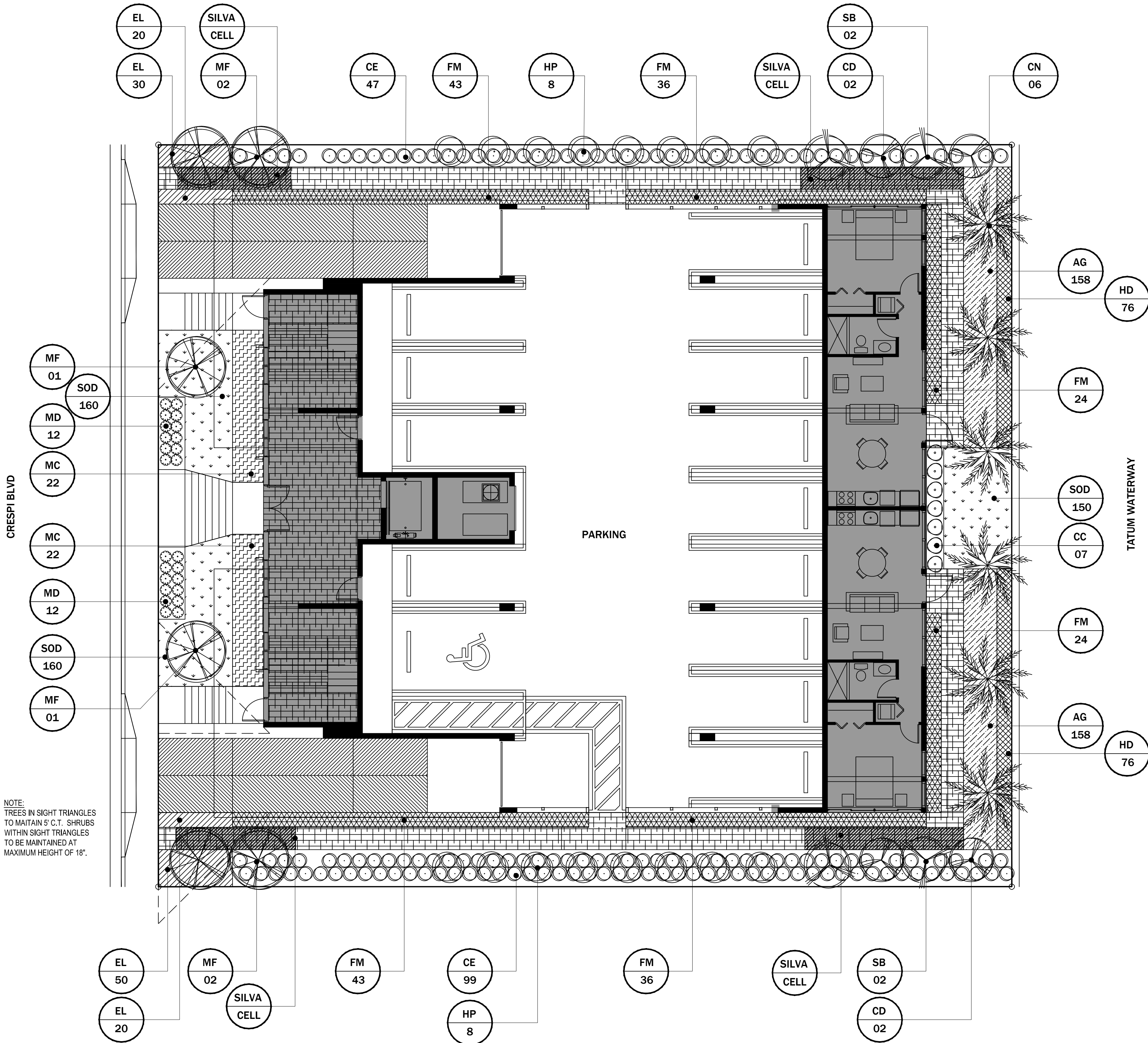
ALL IDEAS, DESIGNS, ARRANGEMENTS AND PLANS INDICATED OR REPRESENTED BY THIS DRAWING ARE OWNED BY, AND THE PROPERTY OF THIS OFFICE AND WERE CREATED, EVOLVED AND DEVELOPED, USE ON, AND IN CONNECTION WITH THE SPECIFIED PROJECT. NONE OF SUCH IDEAS, DESIGNS, ARRANGEMENTS OR PLANS SHALL BE USED BY OR DISCLOSED TO ANY PERSON, FIRM OR CORPORATION FOR ANY PURPOSE WHATSOEVER WITHOUT THE EXPRESSLY WRITTEN PERMISSION OF Plantasya LLC

MICHAEL THIEL
LANDSCAPE DESIGNER

PROJECT TITLE

7925-7935 CRESPI BLVD.

7925-7935 Crespi Blvd.
Miami Beach, FL 33141



PLANTING SCHEDULE					
KEY	TAG	QTY	LATIN NAME	COMMON NAME	SPECS
	SB	4*	Conocarpus erectus	Silver Buttonwood	6'sp, 12'-14'oa, 3" caliper
	CD	4*	Coccoloba diversifolia	Pigeon Plum	6'sp 12'-14'oa, 3" caliper
	CN	6	Cocos nucifera	Coconut Palm	12'sp, 25'oa
	MF	6*	Myrcianthes fragrans	Simpson Stopper	6'sp, 12'-14'oa, 3" caliper
	HP	16*	Hamelia patens	Firebush	10'ht., 4'spr., 4' c.t.
	MD	24	Monstera deliciosa	Monstera	3g, 18" oa, 24"oc
	CC	07	Chamaedorea cataractarum	Cat Palm	7g, 30'sp, 30"oc
	CE	146*	Conocarpus erectus	Silver Buttonwood	3g, 24'sp, 24"oc
	FM	206	Ficus microcarpa	Green Island Ficus	3g, 12"oa, 18"oc
	MC	44*	Muhlenbergia capillaris	Muhly Grass	3g, 24"oa, 24"oc
	HD	152*	Helianthus debilis	Beach Dune Sunflower	1g, 12'sp, 12"oc
	EL	120*	Ernodea littoralis	Beach Creeper	1g, 12'sp, 12"oc
	AG	316	Arachis glabrata	Perennial Peanut	1g, 12'sp, 12oc
	SOD	472 SF	St. Augustine Palmetto Sod		
*Native Species					

PLANT SCHEDULE

CITY OF MIAMI BEACH LANDSCAPE LEGEND				
Zoning District	RM-1	Lot Area	11500 SF	Acres 0.26
OPEN SPACE		REQUIRED/ALLOWED	PROPOSED	
A	Square feet of required open space as indicated on plan:	Lot area = 11500 s.f. x 30 % = 3450 s.f.	3450	3634
B	Square feet of parking lot open space required as indicated on site plan:	Number of parking spaces 14 x 10 s.f. parking space =	140	184
C	Total square feet of landscaped open space required:	A + B =	3590	3818
LAWN AREA CALCULATION				
A	Square feet of landscaped open space required:	3450	3450	2781
B	Maximum lawn (sod) permitted:	60 % x 3450 s.f.	2070	472
TREES		REQUIRED/ALLOWED	PROPOSED	
A	Number of trees required per lot or net lot acre, less existing number of trees meeting minimum requirements (2 palms = 1 tree):	28 trees x .26 net lot acres - number of existing trees =	8	8
B	% Natives required:	Number of trees provided x 30% =	5	6
C	% Low maintenance / drought and salt tolerant required:	Number of trees provided x 50% =	8	8
D	Street trees (maximum average spacing of 20' o.c.):	NA linear feet along street / 20' =	NA	NA
E	Street tree species allowed directly beneath power lines (maximum average spacing of 20' o.c.):	100 linear feet along street / 20' =	5	6
F	Total number of trees provided:		13	14
SHRUBS				
A	Number of shrubs required:	Sum of lot and street trees required x 12 =	156	420
B	% Native shrubs required:	Number of shrubs provided x 50% =	78	190
LARGE SHRUBS OR SMALL TREES				
A	Number of large shrubs required	Number of required shrubs * 10% =	16	16
B	% Native required	Number of large shrubs or small trees provided * 50%=	8	16

LANDSCAPE LEGEND

SHEET INDEX

L1.0 LANDSCAPE PLAN
L2.0 DETAILS

SHEET TITLE

LANDSCAPE PLAN

DATE 05/04/18

DRAWN BY MH

CHECKED BY MT

SHEET NUMBER

L1.0

REV A 07/16/18



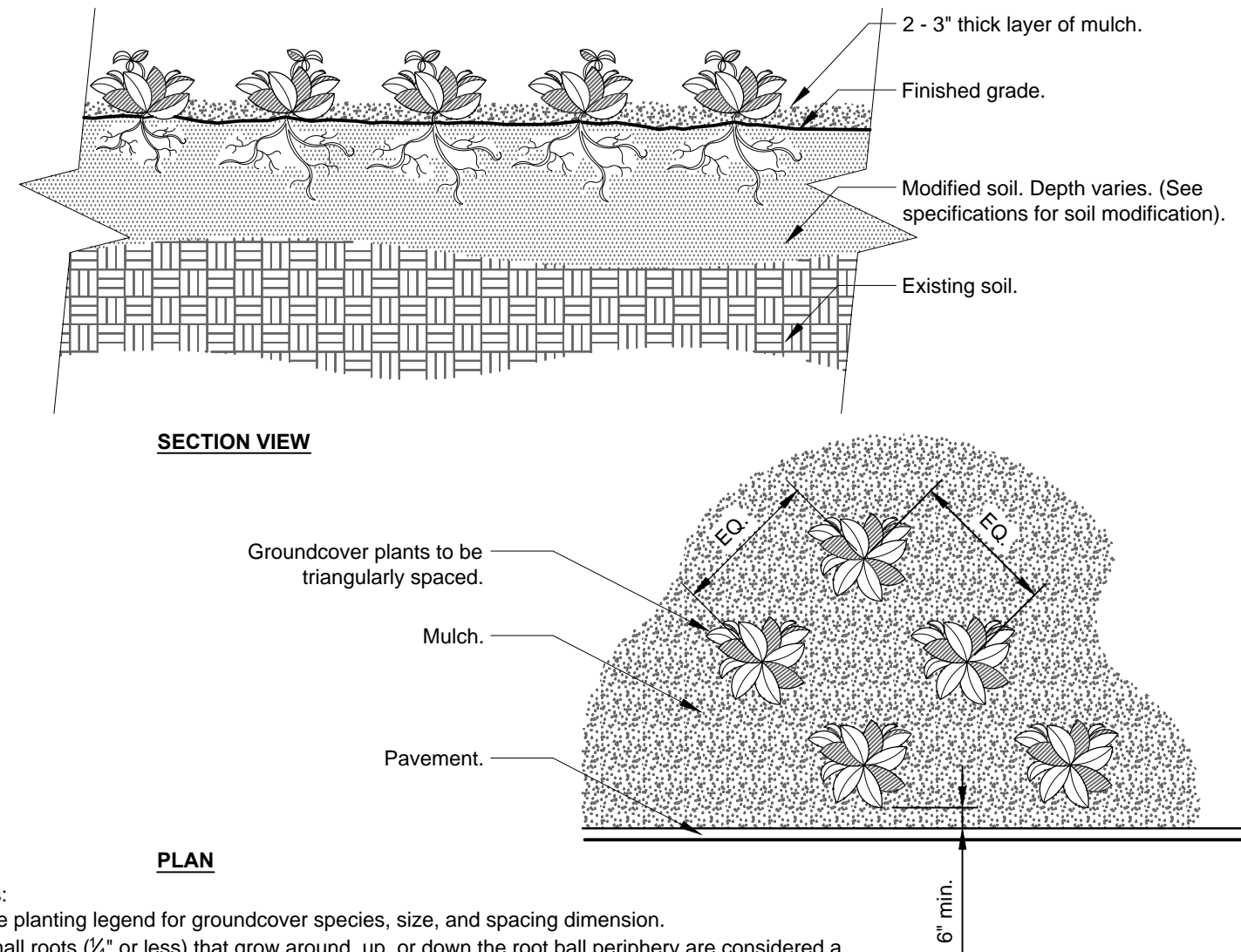
ALL IDEAS, DESIGNS, ARRANGEMENTS AND PLANS INDICATED OR REPRESENTED BY THIS DRAWINGS ARE OWNED BY, AND THE PROPERTY OF THIS OFFICE AND WERE CREATED, EVOLVED AND DEVELOPED, USE ON, AND IN CONNECTION WITH THE SPECIFIED PROJECT. NONE OF SUCH IDEAS, DESIGNS, ARRANGEMENTS OR PLANS SHALL BE USED BY OR DISCLOSED TO ANY PERSON, FIRM OR CORPORATION FOR ANY PURPOSE WHATSOEVER WITHOUT THE EXPRESSLY WRITTEN PERMISSION OF Plantasyia LLC

MICHAEL THIEL
LANDSCAPE DESIGNER

PROJECT TITLE

7925-7935 CRESPI BLVD.

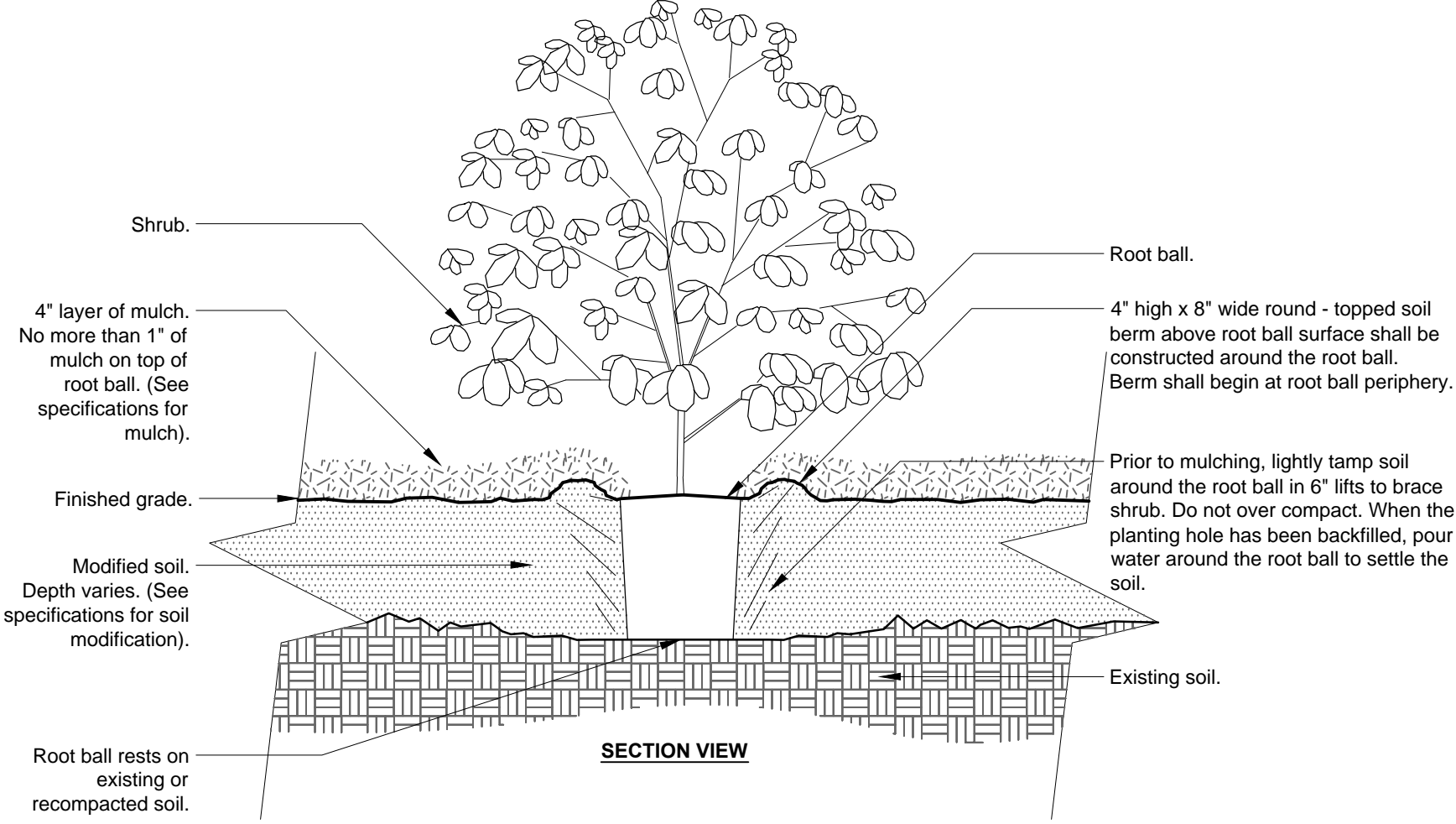
7925-7935 Crespi Blvd.
Miami Beach, FL 33141



- Notes:
- 1- See planting legend for groundcover species, size, and spacing dimension.
 - 2- Small roots ($\frac{1}{4}$ " or less) that grow around, up, or down the root ball periphery are considered a normal condition in container production and are acceptable however they should be eliminated at the time of planting. Roots on the periphery can be removed at the time of planting. (See root ball shaving container detail).
 - 3- Settle soil around root ball of each groundcover prior to mulching.

1 GROUND COVER PLANTING DETAIL

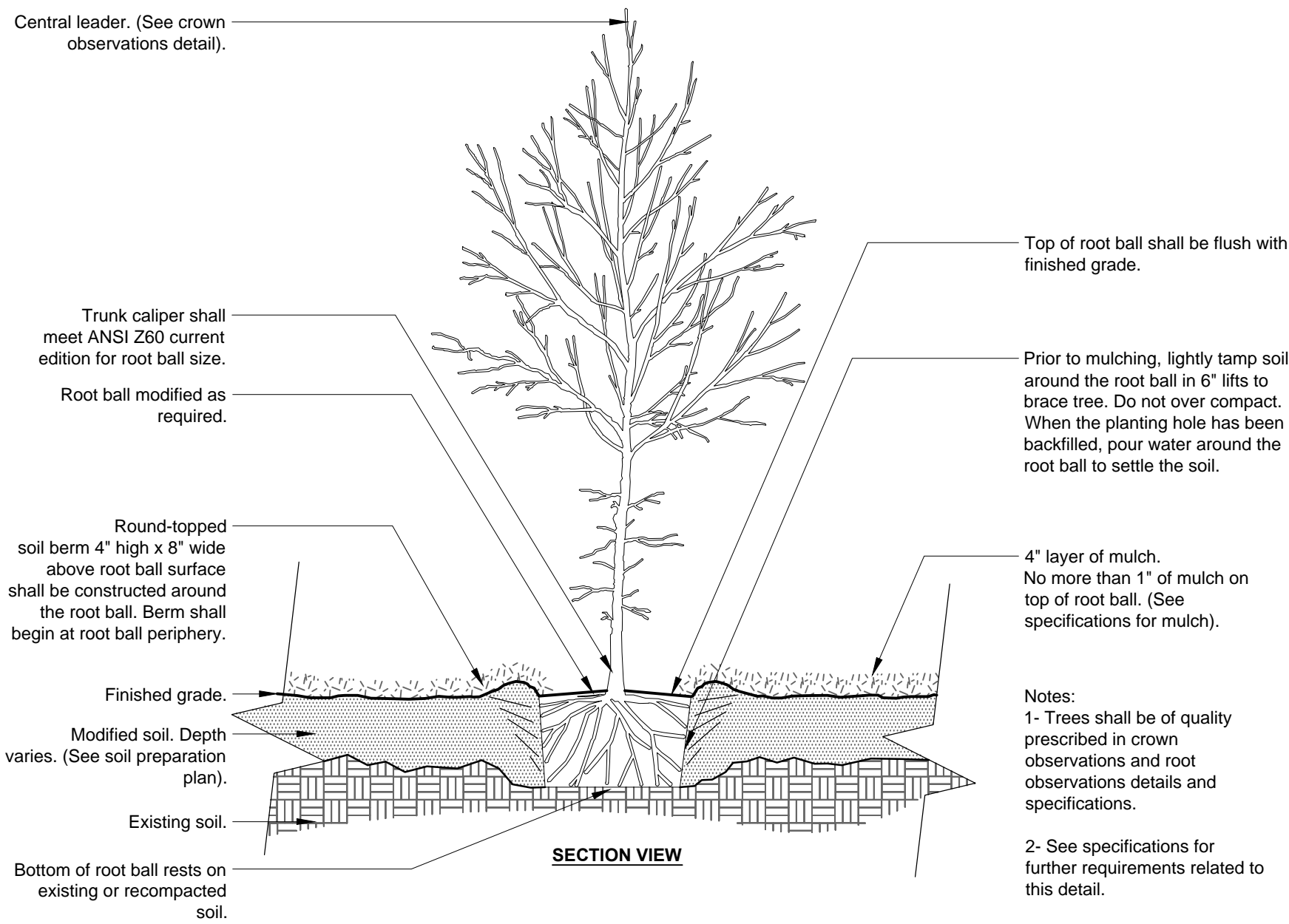
SCALE: 3/4" =1'-0"



- Notes:
- 1- Shrubs shall be of quality prescribed in the root observations detail and specifications.
 - 2- See specifications for further requirements related to this detail.

2 SHRUB PLANTING DETAIL

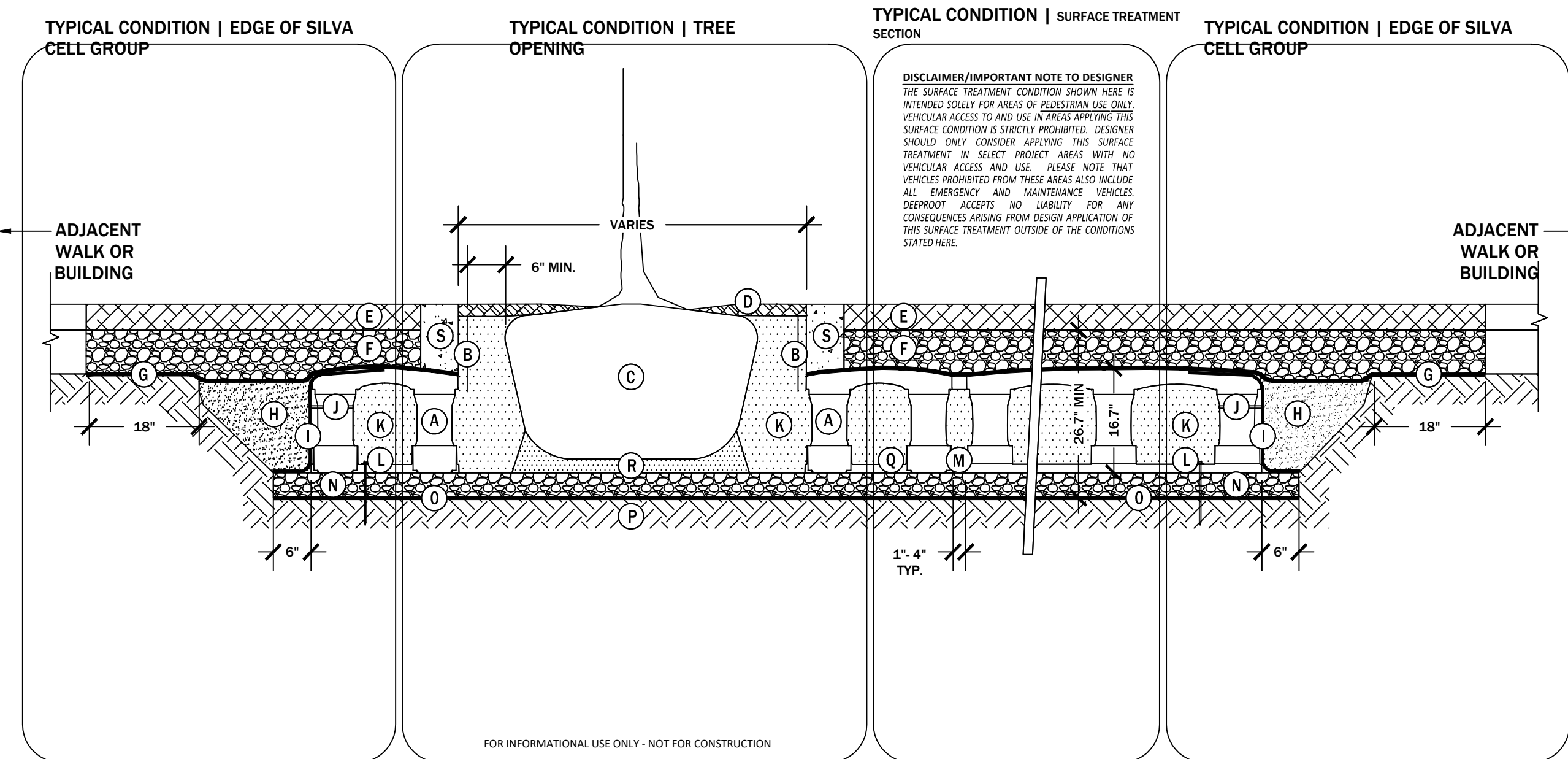
SCALE: 3/4" =1'-0"



- Notes:
- 1- Trees shall be of quality prescribed in crown observations and root observations details and specifications.
 - 2- See specifications for further requirements related to this detail.

3 TREE PLANTING DETAIL

SCALE: 1/2" =1'-0"



DISCLAIMER/IMPORTANT NOTE TO DESIGNER
THE SURFACE TREATMENT CONDITION SHOWN HERE IS INTENDED SOLELY FOR AREAS OF PEDESTRIAN USE ONLY. VEHICULAR ACCESS TO AND USE IN THESE AREAS PROHIBITS THIS SURFACE CONDITION IS STRICTLY PROHIBITED. DESIGNER SHOULD ONLY CONSIDER APPLYING THIS SURFACE TREATMENT IN SELECT PROJECT AREAS WITH NO VEHICULAR ACCESS AND USE. PLEASE NOTE THAT VEHICLES PROHIBITED FROM THESE AREAS ALSO INCLUDE ALL EMERGENCY AND MAINTENANCE VEHICLES. DEEPROOT ACCEPTS NO LIABILITY FOR ANY CONSEQUENCES ARISING FROM DESIGN APPLICATION OF THIS SURFACE TREATMENT OUTSIDE OF THE CONDITIONS STATED HERE.

- KEY P L A
- (A) SILVA CELL SYSTEM (DECK, BASE, AND POSTS)
 - (B) DEEPROOT UB12-2 ROOT BARRIER. INSTALL DIRECTLY ADJACENT TO CONCRETE EDGE RESTRAINT
 - (C) TREE ROOT PACKAGE, SIZE VARIES
 - (D) 12" MULCH, PLACED IN TREE OPENING
 - (E) SURFACE TREATMENT, PER PROJECT
 - (F) 6" MIN AGGREGATE BASE COURSE
 - (G) GEOTEXTILE 18" MIN OVERLAP PAST EXCAVATION
 - (H) BACKFILL, PER PROJECT SPECIFICATIONS
 - (I) GEOGRID TO LINE PERIMETER OF SYSTEM WITH 6" TOE (OUTWARD FROM BASE) AND 12" EXCESS (OVER TOP OF DECK)
 - (J) CABLE TIE, ATTACHING GEOGRID TO SILVA CELL AT BASE OF UPPER LEG FLARE
 - (K) PLANTING SOIL, PER PROJECT SPECIFICATIONS. COMPACTED TO 70-80% PROCTOR.
 - (L) PIN, PER SILVA CELL SPECIFICATIONS
 - (M) 1" TO 4" SPACING BETWEEN SILVA CELLS AT BASE
 - (N) 4" MIN AGGREGATE SUB BASE, COMPACTED TO 95% PROCTOR
 - (O) GEOTEXTILE FABRIC, PLACED BELOW AGGREGATE SUB BASE
 - (P) SUBGRADE, COMPACTED TO 95% PROCTOR
 - (Q) SILVA CELL BASE SLOPE, 7% MAX
 - (R) PLANTING SOIL BELOW TREE ROOT PACKAGE, COMPACTED TO 85-90% PROCTOR
 - (S) CONCRETE EDGE RESTRAINT BETWEEN AGGREGATE BASE COURSE AND TREE OPENING

- NOTE
1. INSTALLATION TO BE COMPLETED IN ACCORDANCE WITH MANUFACTURER'S SPECIFICATIONS
 2. DO NOT SCALE DRAWINGS
 3. PROVIDE SUPPLEMENTAL IRRIGATION FOR SEASONAL DROUGHT SUPPORT OF TREES & SOIL

4 SILVA CELL FOR PEDESTRIAN AREAS

N.T.S.

SHEET INDEX

L1.0 LANDSCAPE PLAN
L2.0 DETAILS

SHEET TITLE

DEATILS

DATE 05/04/18
DRAWN BY MH
CHECKED BY MT
SHEET NUMBER

L2.0

REV A 07/16/18

