

TC-C MASSING STUDY

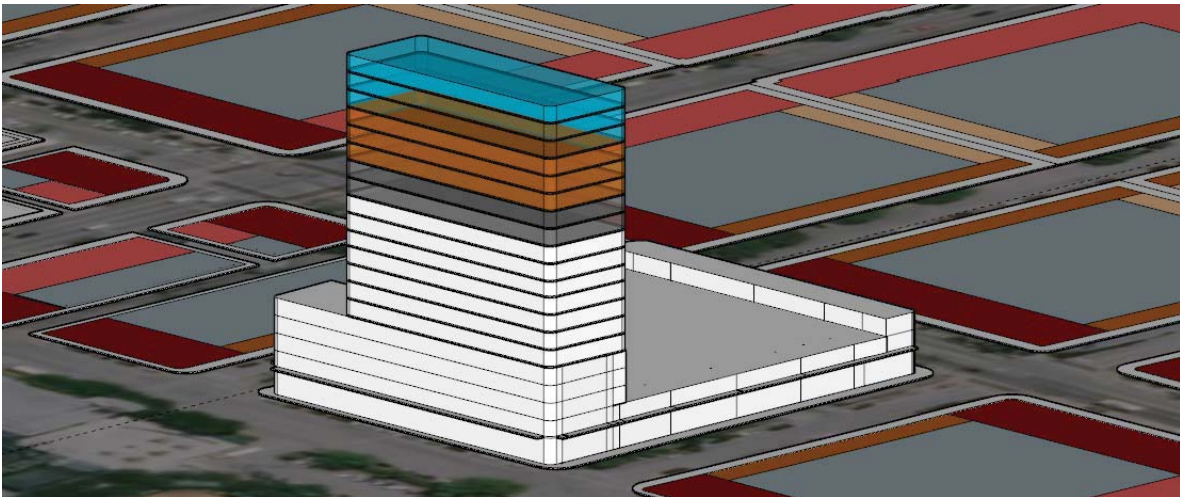
Legend

- Up to 125 FT – 11 stories (**White**)
- 125-145 FT – Approximately 13 stories (**Gray**)
- 145-175 FT – Approximately 16 stories (**Orange**)
- 175-200 FT – Approximately 19 stories (**Turquoise**)

TC-C MASSING STUDY - OPTION A

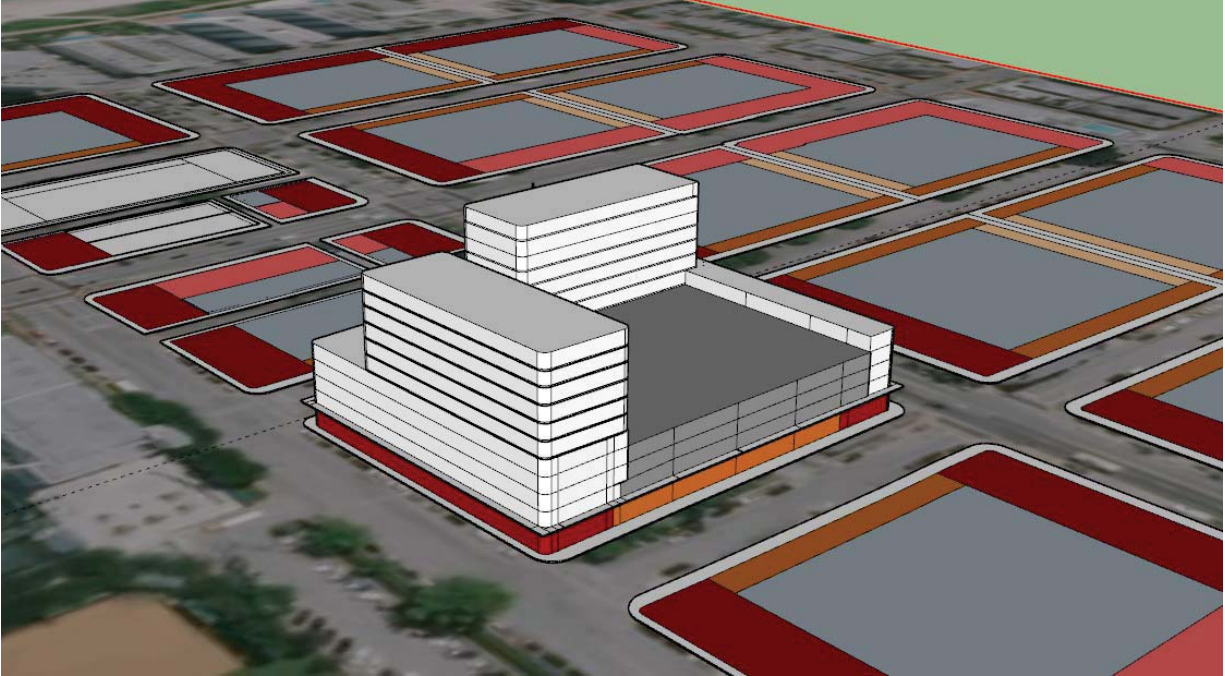
(Block from 71st to 72nd St.)

Option to maximize floor area while providing public benefits.



TC-C MASSING STUDY - OPTION B
(Block from 71st to 72nd St.)

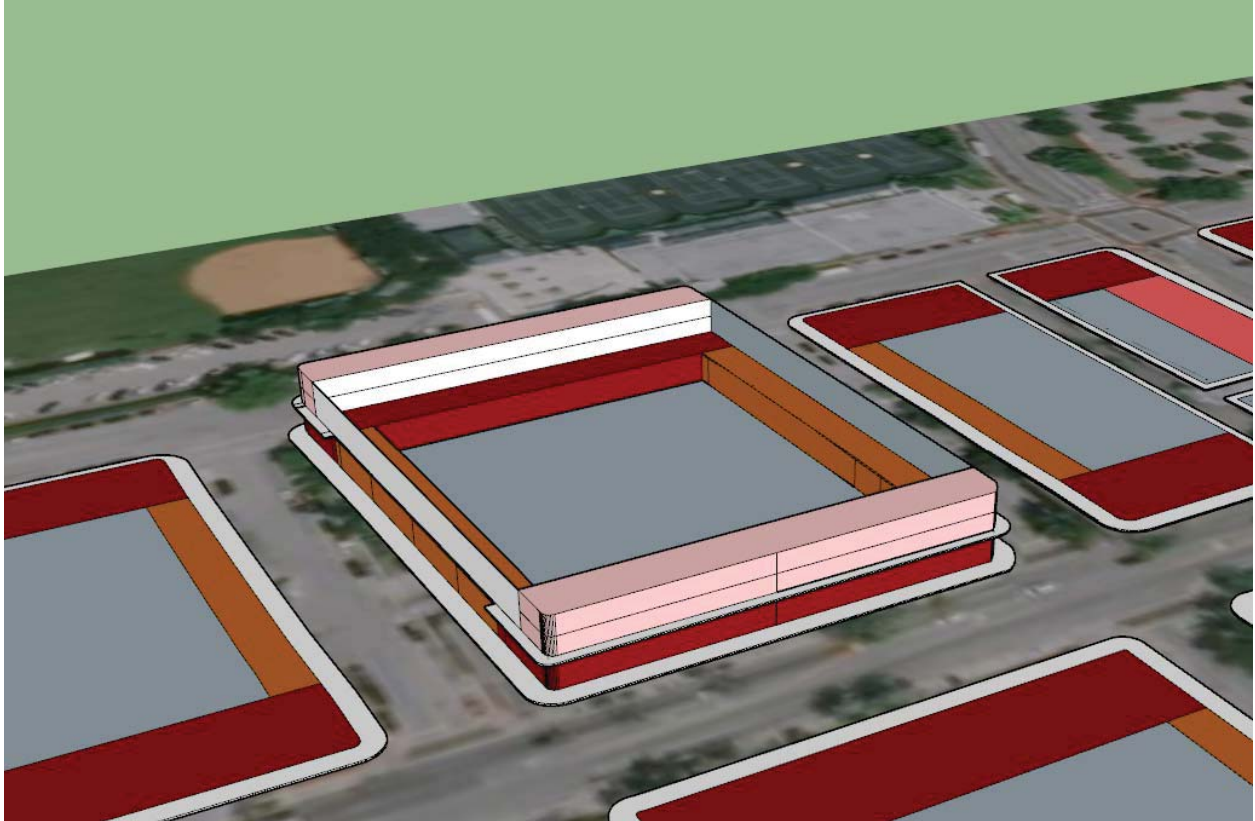
Option to maximize floor area without providing public benefits.



TC-C MASSING STUDY - BASE REGULATIONS

(Block from 71st to 72nd St.)

Minimum required habitable space pursuant to the regulations for Class A and Class C roadways.

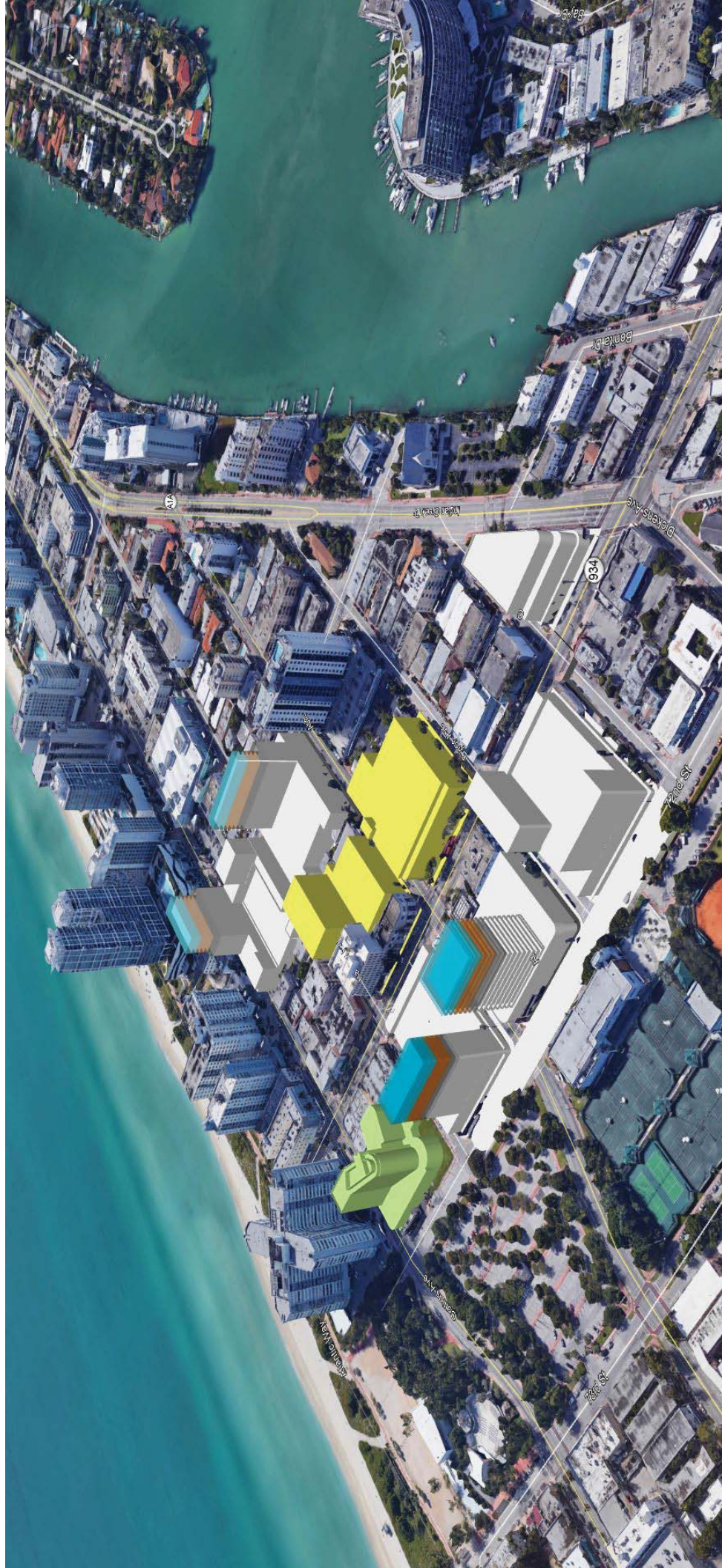


TC-C Massing Study Bird's Eye Renderings

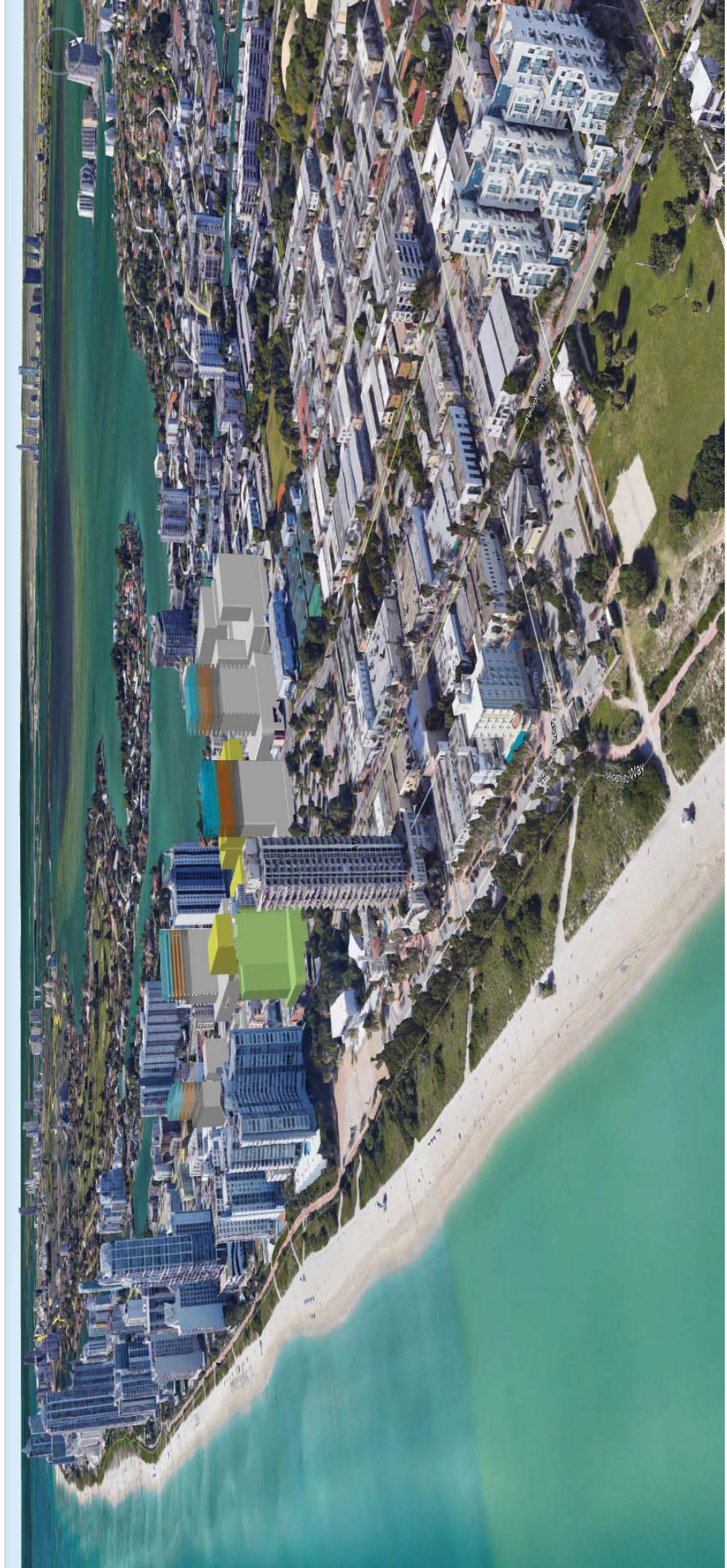
Legend

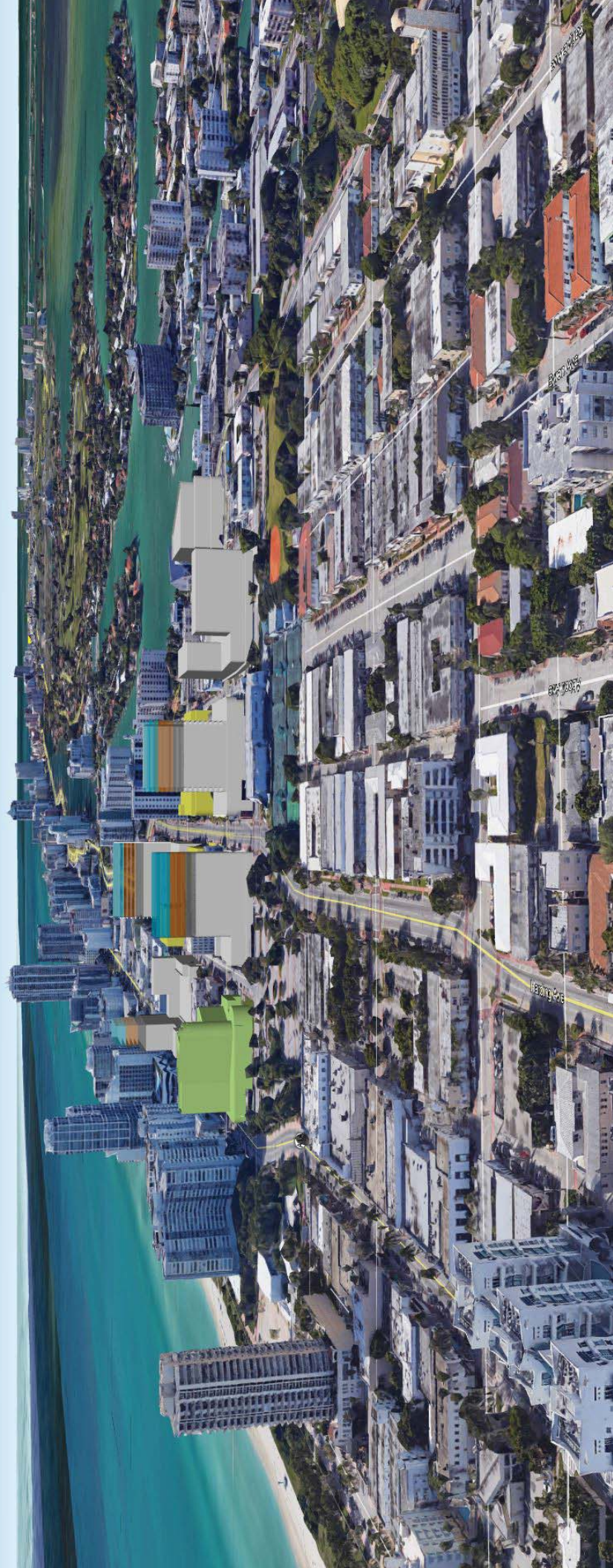
- Approved Hotel Development (**Green**)
 - 3.5 FAR at 125 feet
- Land Swap Parcels Proposed Development (**Yellow**)
- Massing Study Samples
 - Up to 125 FT – 11 stories (**White**),
 - 125-145 FT – Approximately 13 stories (**Gray**)
 - 145-175 FT – Approximately 16 stories (**Orange**)
 - 175-200 FT – Approximately 19 stories (**Turquoise**)

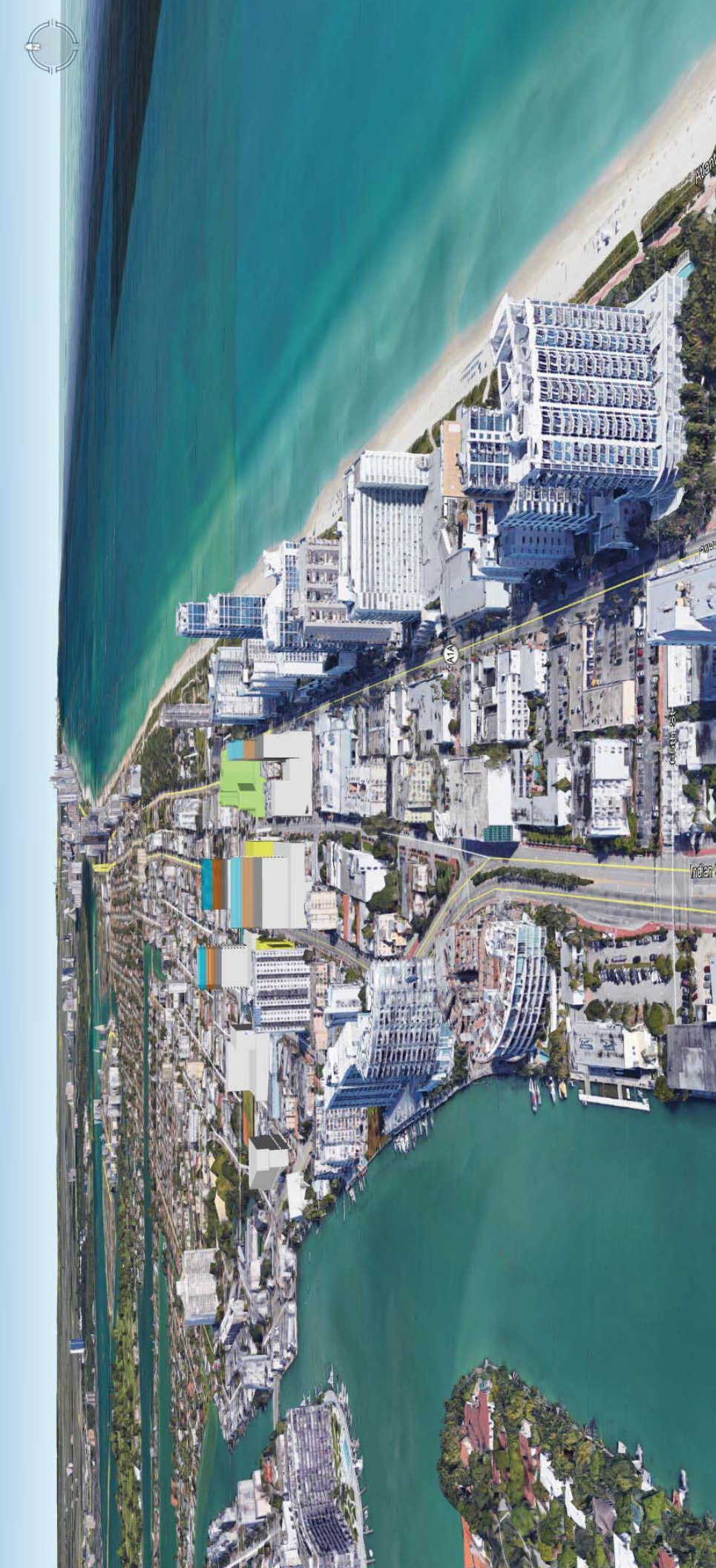




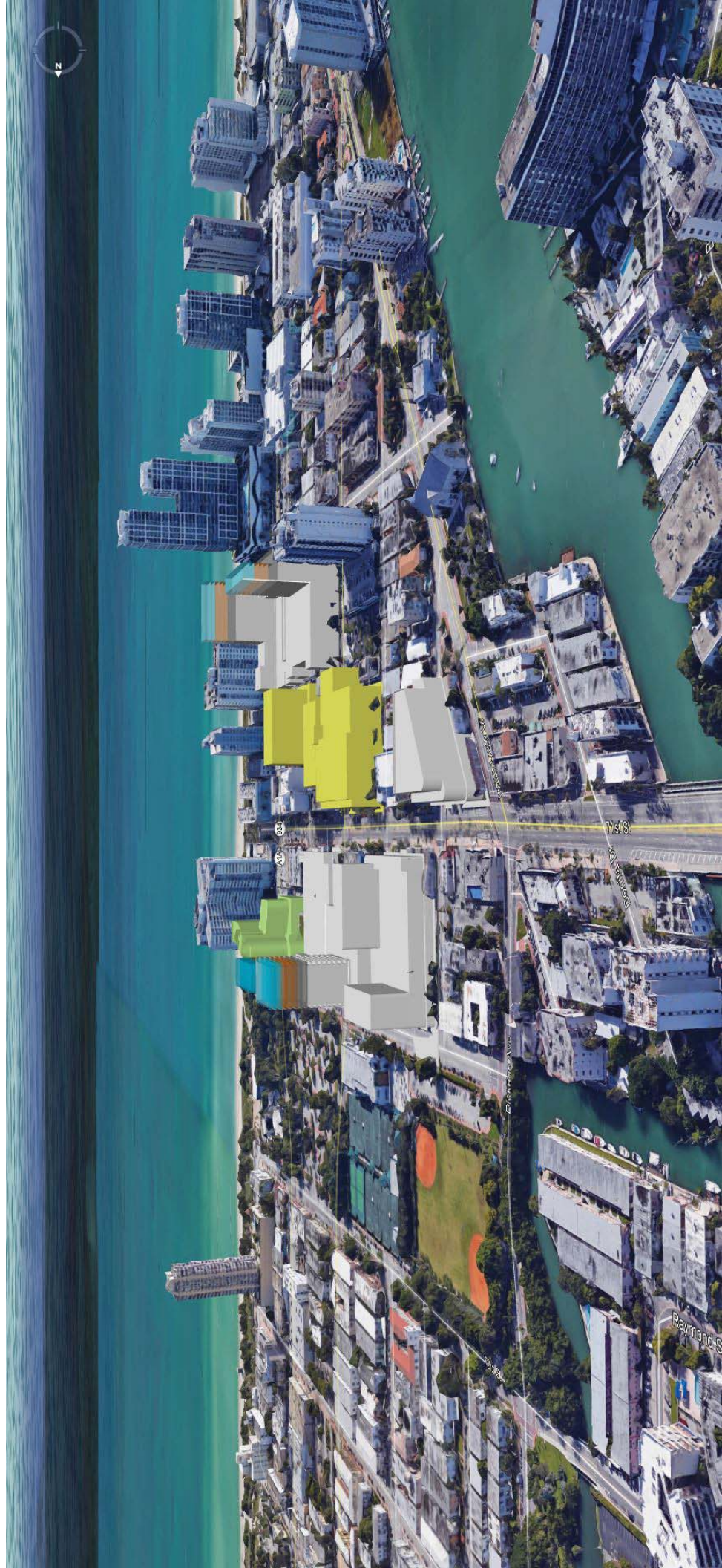
















Abbott Ave

Indian Creek Dr

934