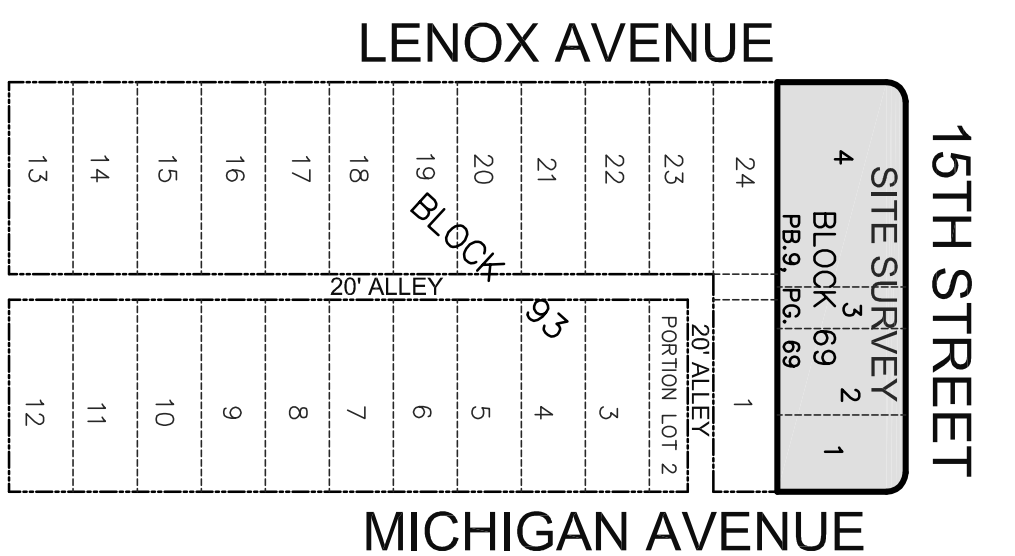


- LEGEND**
- CONCRETE
 - ASPHALT PAVEMENT
 - ELEVATION
 - OVERHEAD WIRES
 - UNDERGROUND STORM SEWER LINE
 - UNDERGROUND SANITARY SEWER LINE
 - CENTERLINE
 - OFFICIAL RECORDS BOOK
 - MIAMI-DADE COUNTY RECORDS
 - TRAVELER POINT (FOR FIELD INFORMATION ONLY)
 - RADIUS
 - CENTRAL ANGLE
 - ARC LENGTH
 - NUMBER PARKING SPACES
 - TREES
 - TREE NUMBER

COPYRIGHT 2016, BY PULICE LAND SURVEYORS, INC. ALL RIGHTS RESERVED. NO PART OF THIS SURVEY MAY BE REPRODUCED, IN ANY FORM OR BY ANY MEANS, WITHOUT PERMISSION IN WRITING FROM AN OFFICER OF PULICE LAND SURVEYORS, INC.



14TH STREET LOCATION MAP
NOT TO SCALE

TREE TABLE

Tree Number	Common Name	DBH (inches)	Canopy Height (feet)
1	GUARBO LIMBO	7"	12'
2	UNIDENTIFIED TREE	5"	22'
3	GUARBO LIMBO	13"	27'
4	CABBAGE PALM	15"	15'
5	GUARBO LIMBO	5"	15'
6	GUARBO LIMBO	12"	21'
7	GUARBO LIMBO	12"	24'
8	ROYAL PALM	14"	18'
9	UNIDENTIFIED TREE	13"	20'
10	UNIDENTIFIED TREE	13"	20'
11	UNIDENTIFIED TREE	6"	17'
12	GUARBO LIMBO	6"	17'
13	GUARBO LIMBO	13"	18'
14	ROYAL PALM	14"	20'
15	UNIDENTIFIED TREE	12"	23'
16	UNIDENTIFIED TREE	14"	20'
17	UNIDENTIFIED TREE	4"	10'
18	ROYAL PALM	24"	32'
19	GUARBO LIMBO	18"	33'
20	GUARBO LIMBO	20"	50'
21	BLACK OLIVE TREE	20"	30'
22	CABBAGE PALM	13"	18'
23	CABBAGE PALM	13"	18'
24	CABBAGE PALM	13"	18'
25	CABBAGE PALM	13"	18'
26	OAK TREE	4"	10'
27	BLACK OLIVE TREE	15"	27'
28	BLACK OLIVE TREE	6"	15'
29	SCHIFFERIA	7"	19'
30	SCHIFFERIA	6"	23'
31	GUARBO LIMBO	18"	26'
32	GUARBO LIMBO	13"	17'
33	BOTTLE BRUSH	9"	21'
34	CABBAGE PALM	13"	15'
35	CABBAGE PALM	12"	15'
36	CABBAGE PALM	8"	18'
37	GOULDEN BURNING BUSH	8"	18'
38	BOTTLE BRUSH	6"	18'
39	DEAD TREE	N/A	N/A
40	BOTTLE BRUSH	6"	15'
41	BLACK OLIVE TREE	24"	58'
42	BLACK OLIVE TREE	20"	45'
43	CABBAGE PALM	13"	15'
44	BLACK OLIVE TREE	10"	35'

CERTIFICATION:
I HEREBY CERTIFY THAT THIS SKETCH OF SURVEY MEETS THE STANDARDS OF PRACTICE SET FORTH BY THE FLORIDA DEPARTMENT OF AGRICULTURE AND CONSUMER SERVICES ("DOCS") CHAPTER 50-17, FLORIDA ADMINISTRATIVE CODE, PURSUANT TO SECTION 472.02(7), FLORIDA STATUTES.
NOT VALID WITHOUT THE SIGNATURE AND THE ORIGINAL RAISED SEAL OF A FLORIDA LICENSED SURVEYOR AND MAPPER.

DAJOHN F. PULICE, PROFESSIONAL SURVEYOR AND MAPPER LS2691
DRETH BURNS, PROFESSIONAL SURVEYOR AND MAPPER LS6136
STATE OF FLORIDA

BOUNDARY AND TOPOGRAPHIC SURVEY

NO.	REVISIONS	BY
1	AS-BUILT	JLF
2	REVISIONS TO NAVY	RE
3	REVISIONS TO NAVY	RE
4	REVISIONS TO NAVY	RE
5	REVISIONS TO NAVY	RE

ELEVEN ON LENOX
1080 15th STREET, MIAMI BEACH
MIAMI - DADE COUNTY, FLORIDA 33139

PULICE LAND SURVEYORS, INC.
5381 NOB HILL ROAD
SUNRISE, FLORIDA 33361
TELEPHONE: (954) 572-1777
FAX: (954) 572-1778
E-MAIL: survey@pulicesurveyors.com
CERTIFICATE OF AUTHORIZATION LB#3870

DESIGN BY: M.D.
SCALE: 1" = 20'
SURVEY DATE: 10/04/16
FILE: SHOMA SOUTH BEACH DEVELOPMENT LLC
ORDER NO.: 84111

GRAPHIC SCALE
1" = 20'
0' 20' 40' 60'

- LEGAL DESCRIPTION:**
LOTS 1, 2, 3 AND 4, BLOCK 69, "LINCOLN SUBDIVISION," ACCORDING TO THE PLAT THEREOF, AS RECORDED IN PLAT BOOK 9, PAGE 69, OF THE PUBLIC RECORDS OF MIAMI-DADE COUNTY, FLORIDA.
- NOTES:**
- 1) THIS SITE CONTAINS 31,903 SQUARE FEET (0.7324 ACRES) MORE OR LESS.
 - 2) ELEVATIONS ARE BASED ON NORTH AMERICAN VERTICAL DATUM OF 1988.
 - 3) MIAMI-DADE COUNTY BENCHMARK D-149, ELEVATION: 2.65 FEET.
 - 4) UTM ZONE 18N, DATUM: NAD 83, ELEVATION: 8 FEET, PANEL #120851
 - 5) THIS SITE LIES IN SECTION 34, TOWNSHIP 53 SOUTH, RANGE 42 EAST, MIAMI-DADE COUNTY, FLORIDA.
 - 6) BEARINGS ARE BASED ON THE CENTER LINE OF 15th STREET ASSUMED BEARINGS BEING N90°00'00"E.
 - 7) REASONABLE EFFORTS WERE MADE REGARDING THE EXISTENCE AND THE LOCATION OF UNDERGROUND UTILITIES. THIS FIRM, HOWEVER, DOES NOT ACCEPT RESPONSIBILITY FOR THIS INFORMATION, BEFORE EXCAVATION OR FIELD VERIFICATION.
 - 8) THIS SURVEY IS CERTIFIED EXCLUSIVELY TO: SHOMA, LINCOLN INVESTMENTS LLC, A DELAWARE LIMITED LIABILITY COMPANY, MARIA SHUAJEE, TITLE AMERICA, A LAW FIRM, OLD REPUBLIC NATIONAL TITLE INSURANCE COMPANY.
 - 9) THE HORIZONTAL POSITIONAL ACCURACY OF WELL DEFINED ELEVATIONS OF WELL DEFINED IMPROVEMENTS ON THIS SURVEY IS ±0.1.
 - 10) 20 PARTIAL PANS 08 TOTAL STRIP-PARKING SPACES, (48 REGULAR AND 12 PARTIAL) ARE SHOWN ON THIS SURVEY.
 - 11) THIS SURVEY WAS PREPARED WITHOUT BENEFIT OF A COMMITMENT FOR TITLE INSURANCE. ONLY PLATTED OR KNOWN EASEMENTS ARE DEPICTED HEREON.