



ESPAÑOLA HOTEL

1434 WASHINGTON AVENUE
MIAMI BEACH, FLORIDA 33139

BOARD OF ADJUSTMENT - FINAL SUBMITTAL

OWNER
INFINITY ESPANOLA HOTEL VENTURE, LLC
1407 BROADWAY, 30TH FLOOR
NEW YORK, NEW YORK 10018

DESIGN ARCHITECT
WILKINSON ARCHITECTS PLLC
265 CANAL STREET / SUITE 507
NEW YORK, NEW YORK 10013

LANDSCAPE ARCHITECT
GARDNER & SEMLER
17670 NW 78TH AVENUE / SUITE 214
MIAMI, FLORIDA 33015

DNB
DESIGN GROUP

2020 PONCE DE LEON BOULEVARD
CORAL GABLES, FLORIDA 33134
MAIN: 305.444.5545
FAX: 305.444.5509

INDEX OF DRAWINGS

EXISTING CONDITIONS

- SITE SURVEY
- KEY MAP
- C-1 ZONING INFORMATION & LOCATION MAPS
- C-2 EXISTING CONDITIONS
- C-3 EXISTING CONDITIONS
- C-4 EXISTING CONDITIONS
- C-5 EXISTING CONDITIONS
- C-6 EXISTING CONDITIONS
- C-7 EXISTING CONDITIONS
- C-8 EXISTING CONDITIONS
- C-9 EXISTING CONDITIONS
- C-10 EXISTING CONDITIONS

EXISTING PLANS

- EX-1 EXISTING SITE PLAN
- EX-2 FIRST & SECOND FLOOR EXISTING PLANS
- EX-3 THIRD FLOOR & ROOF EXISTING PLANS

PROPOSED ARCHITECTURE

- A-1 FIRST & SECOND FLOOR PROPOSED PLANS
- A-2 THIRD FLOOR & ROOF PROPOSED PLANS

COURTYARD ARCHITECTURE

- A-3 ENLARGED COURTYARD PLANS
- A-4 ENLARGED COURTYARD SEATING PLANS
- A-5 RENDERING
- A-6 RENDERING
- A-7 RENDERING
- A-8 RENDERING



ESPAÑOLA HOTEL

1434 WASHINGTON AVENUE
MIAMI BEACH, FLORIDA 33139

BOARD OF ADJUSTMENT - FINAL SUBMITTAL 07.06.2018

OWNER
INFINITY ESPANOLA HOTEL VENTURE, LLC
1407 BROADWAY, 30TH FLOOR
NEW YORK, NEW YORK 10018

DESIGN ARCHITECT
WILKINSON ARCHITECTS PLLC
265 CANAL STREET / SUITE 507
NEW YORK, NEW YORK 10013

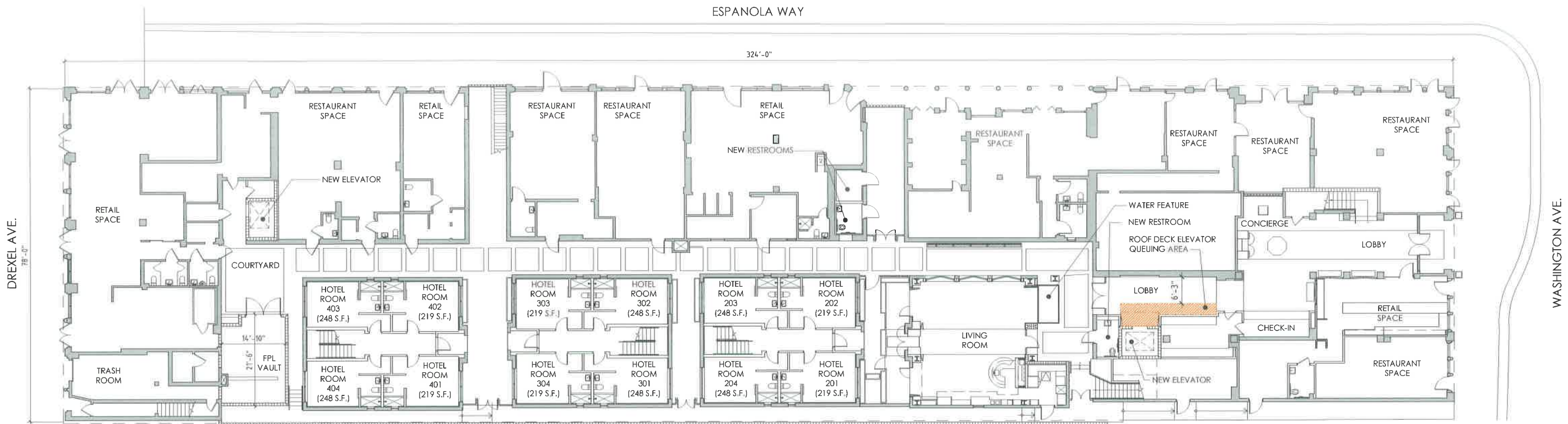
LANDSCAPE ARCHITECT
GARDNER & SEMLER
17670 NW 78TH AVENUE / SUITE 214
MIAMI, FLORIDA 33015

DNB
DESIGN GROUP
2020 PONCE DE LEON BOULEVARD
CORAL GABLES, FLORIDA 33134
MAIN: 305.444.5545
FAX: 305.444.5509

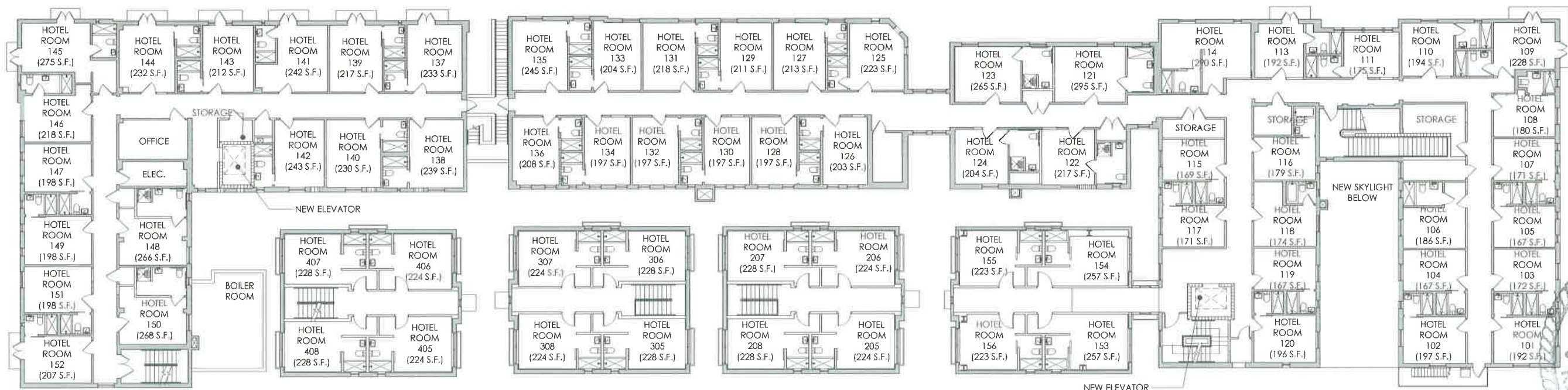


PROPOSED ARCHITECTURE

ESPAÑOLA HOTEL



PROPOSED FIRST FLOOR PLAN
 SCALE: 3/32" = 1'-0"



PROPOSED SECOND FLOOR PLAN
 SCALE: 3/32" = 1'-0"



ESPAÑOLA HOTEL

1434 WASHINGTON AVENUE
 MIAMI BEACH, FLORIDA 33139

OWNER
 INFINITY ESPANOLA HOTEL VENTURE, LLC
 1407 BROADWAY, 30TH FLOOR
 NEW YORK, NEW YORK 10018

DESIGN ARCHITECT
 WILKINSON ARCHITECTS PLLC
 265 CANAL STREET / SUITE 507
 NEW YORK, NEW YORK 10013

LANDSCAPE ARCHITECT
 GARDNER & SEMLER
 17670 NW 78TH AVENUE / SUITE 214
 MIAMI, FLORIDA 33015

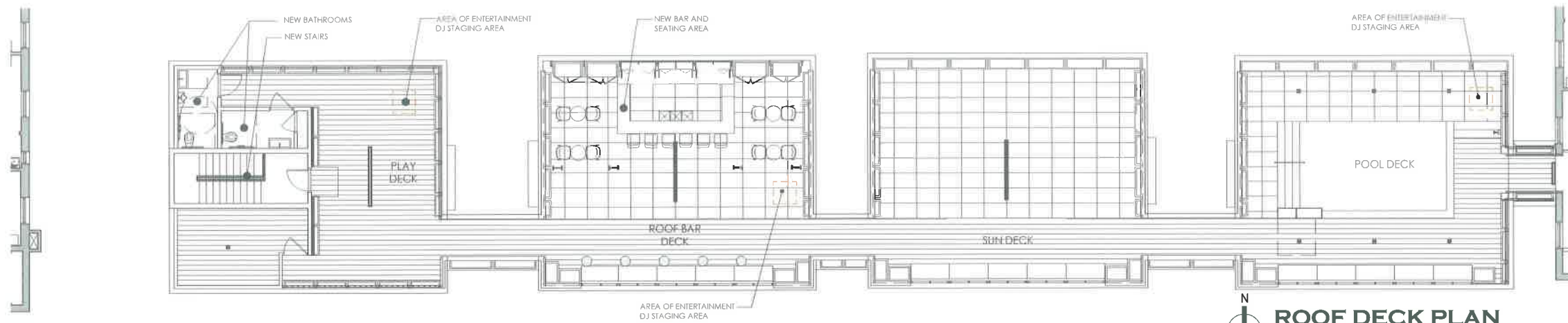
PROPOSED PLANS A-1

DNB
 DESIGN GROUP
 2020 PONCE DE LEON BOULEVARD
 CORAL GABLES, FLORIDA 33134
 MAIN: 305.444.5545
 FAX: 305.444.5509

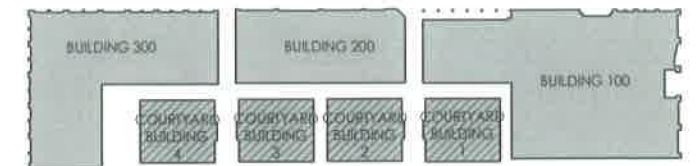


COURTYARD ARCHITECTURE

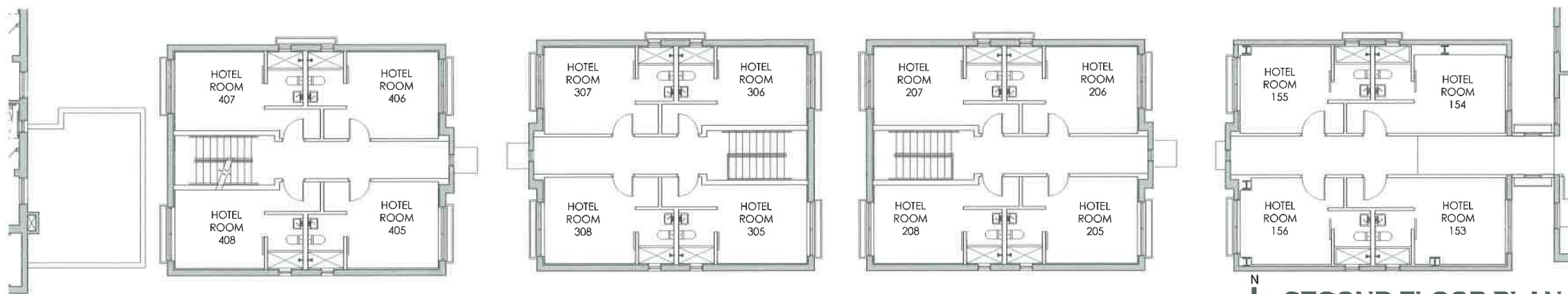
ESPAÑOLA HOTEL



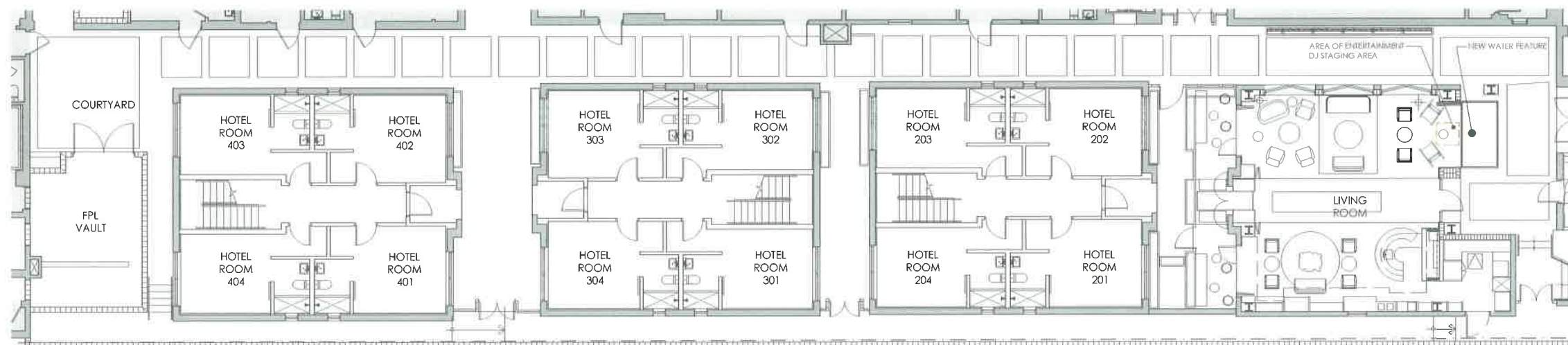
ROOF DECK PLAN
SCALE: 1/8" = 1'-0"



KEY MAP
SCALE: NTS



SECOND FLOOR PLAN
SCALE: 1/8" = 1'-0"



GROUND FLOOR PLAN
SCALE: 1/8" = 1'-0"



ESPAÑOLA HOTEL

1434 WASHINGTON AVENUE
MIAMI BEACH, FLORIDA 33139

ENLARGED COURTYARD PLANS A-3

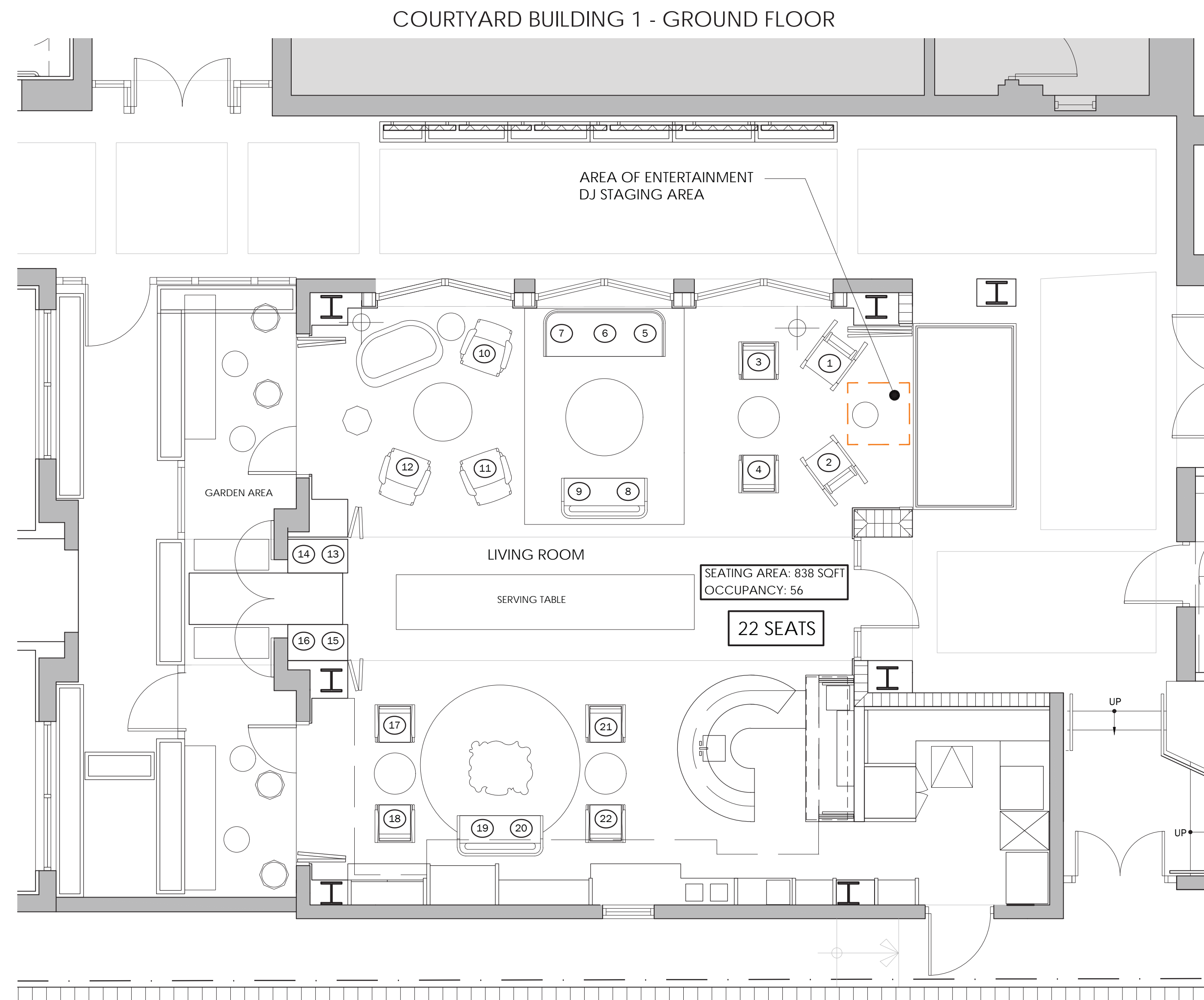
OWNER
INFINITY ESPANOLA HOTEL VENTURE, LLC
1407 BROADWAY, 30TH FLOOR
NEW YORK, NEW YORK 10018

DESIGN ARCHITECT
WILKINSON ARCHITECTS PLLC
265 CANAL STREET / SUITE 507
NEW YORK, NEW YORK 10013

LANDSCAPE ARCHITECT
GARDNER & SEMLER
17670 NW 78TH AVENUE / SUITE 214
MIAMI, FLORIDA 33015

DNB
DESIGN GROUP

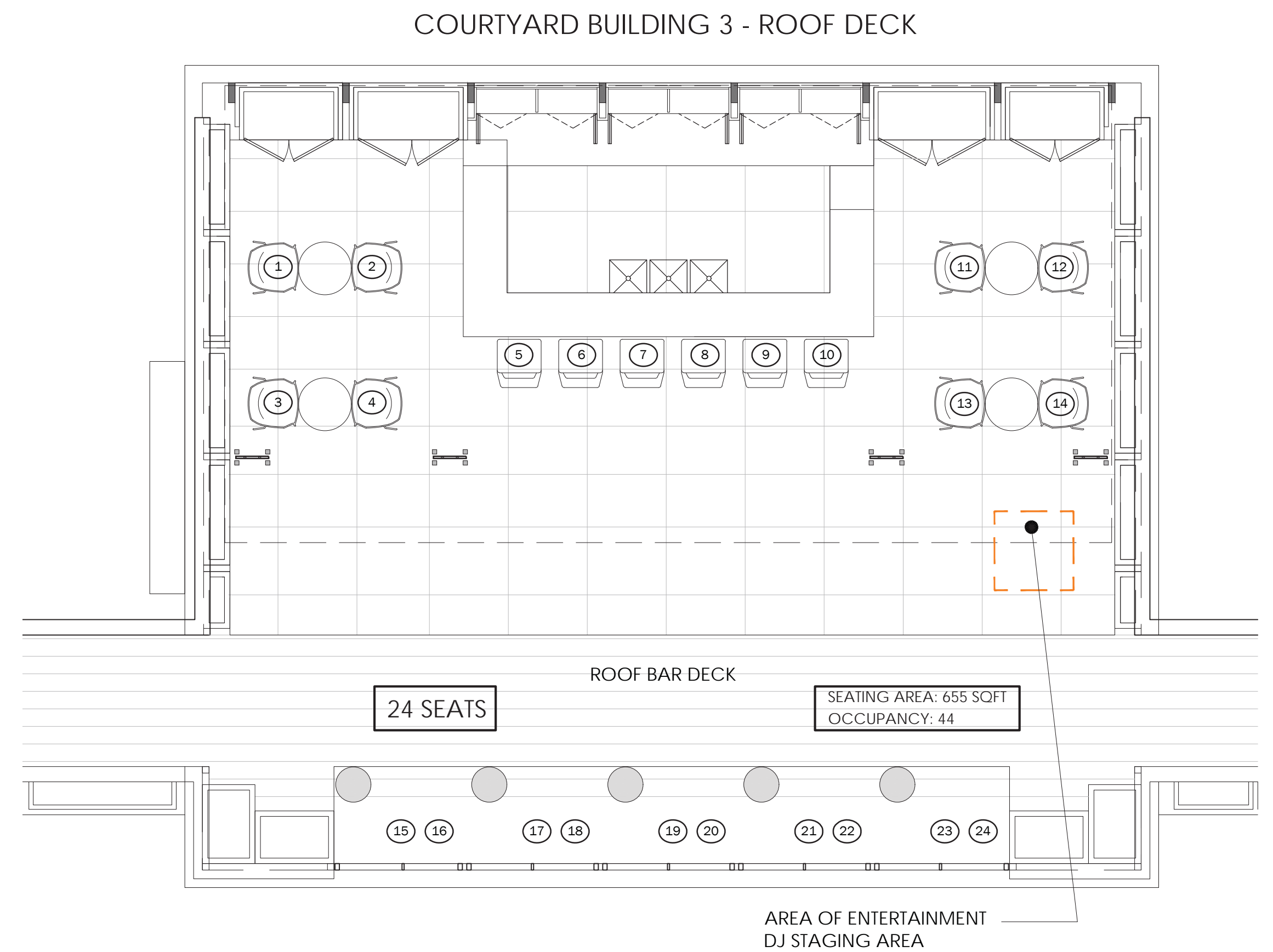
2020 PONCE DE LEON BOULEVARD
CORAL GABLES, FLORIDA 33134
MAIN: 305.444.5545
FAX: 305.444.5509



**LIVING ROOM
ENLARGED SEATING PLAN**

0 8' 16' 32'

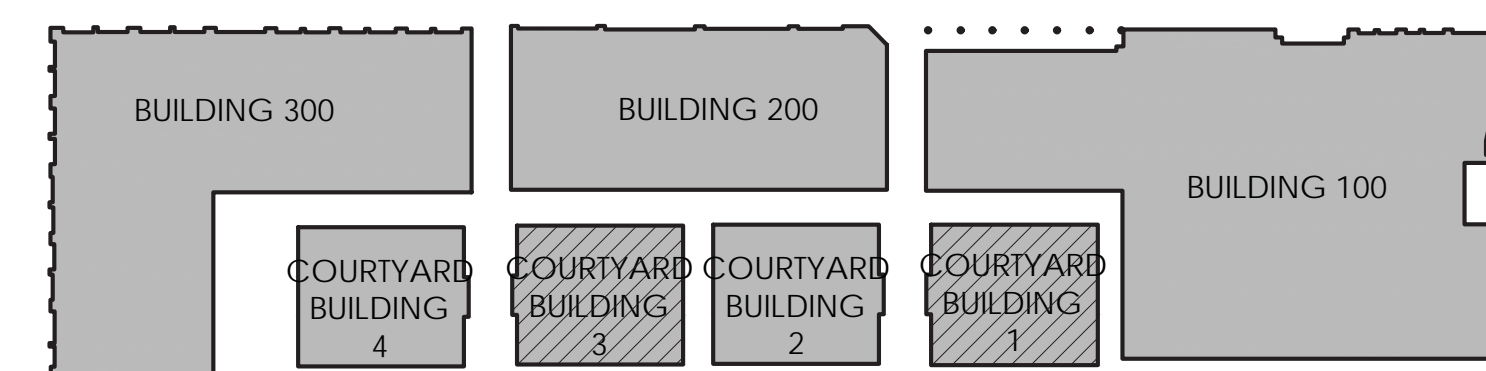
SCALE: 1/8" = 1'-0"



**ROOF DECK BAR
ENLARGED SEATING PLAN**

0 8' 16' 32'

SCALE: 1/8" = 1'-0"



KEY MAP

0 8' 16' 32'

SCALE: NTS

ESPAÑOLA HOTEL

1434 WASHINGTON AVENUE
MIAMI BEACH, FLORIDA 33139

ENLARGED COURTYARD SEATING PLANS A-4

OWNER
INFINITY ESPANOLA HOTEL VENTURE, LLC
1407 BROADWAY, 30TH FLOOR
NEW YORK, NEW YORK 10018

DESIGN ARCHITECT
WILKINSON ARCHITECTS PLLC
265 CANAL STREET / SUITE 507
NEW YORK, NEW YORK 10013

LANDSCAPE ARCHITECT
GARDNER & SEMLER
17670 NW 78TH AVENUE / SUITE 214
MIAMI, FLORIDA 33015

DNB
DESIGN GROUP

2020 PONCE DE LEON BOULEVARD
CORAL GABLES, FLORIDA 33134
MAIN: 305.444.5545
FAX: 305.444.5509



**ROOF DECK BAR
EXTERIOR RENDERING**

SCALE: NTS

COURTYARD BUILDING 3 - ROOF DECK



ESPAÑOLA HOTEL

1434 WASHINGTON AVENUE
MIAMI BEACH, FLORIDA 33139

OWNER
INFINITY ESPANOLA HOTEL VENTURE, LLC
1407 BROADWAY, 30TH FLOOR
NEW YORK, NEW YORK 10018

DESIGN ARCHITECT
WILKINSON ARCHITECTS PLLC
265 CANAL STREET / SUITE 507
NEW YORK, NEW YORK 10013

LANDSCAPE ARCHITECT
GARDNER & SEMLER
17670 NW 78TH AVENUE / SUITE 214
MIAMI, FLORIDA 33015

RENDERINGS A-5

DNB
DESIGN GROUP

2020 PONCE DE LEON BOULEVARD
CORAL GABLES, FLORIDA 33134
MAIN: 305.444.5545
FAX: 305.444.5509



**LIVING ROOM
INTERIOR RENDERING**

SCALE: NTS

COURTYARD BUILDING 1 - GROUND FLOOR



ESPAÑOLA HOTEL

1434 WASHINGTON AVENUE
MIAMI BEACH, FLORIDA 33139

OWNER
INFINITY ESPANOLA HOTEL VENTURE, LLC
1407 BROADWAY, 30TH FLOOR
NEW YORK, NEW YORK 10018

DESIGN ARCHITECT
WILKINSON ARCHITECTS PLLC
265 CANAL STREET / SUITE 507
NEW YORK, NEW YORK 10013

LANDSCAPE ARCHITECT
GARDNER & SEMLER
17670 NW 78TH AVENUE / SUITE 214
MIAMI, FLORIDA 33015

RENDERINGS A-6

DNB
DESIGN GROUP

2020 PONCE DE LEON BOULEVARD
CORAL GABLES, FLORIDA 33134
MAIN: 305.444.5545
FAX: 305.444.5509



**LIVING ROOM
INTERIOR RENDERING**

SCALE: NT8

COURTYARD BUILDING 1 - GROUND FLOOR



ESPAÑOLA HOTEL

1434 WASHINGTON AVENUE
MIAMI BEACH, FLORIDA 33139

OWNER
INFINITY ESPANOLA HOTEL VENTURE, LLC
1407 BROADWAY, 30TH FLOOR
NEW YORK, NEW YORK 10018

DESIGN ARCHITECT
WILKINSON ARCHITECTS PLLC
265 CANAL STREET / SUITE 507
NEW YORK, NEW YORK 10013

LANDSCAPE ARCHITECT
GARDNER & SEMLER
17670 NW 78TH AVENUE / SUITE 214
MIAMI, FLORIDA 33015

RENDERINGS A-7

DNB
DESIGN GROUP

2020 PONCE DE LEÓN BOULEVARD
CORAL GABLES, FLORIDA 33134
MAIN: 305.444.5545
FAX: 305.444.5509



**LIVING ROOM
INTERIOR RENDERING**

SCALE: NTS

COURTYARD BUILDING 1 - GROUND FLOOR



ESPAÑOLA HOTEL

1434 WASHINGTON AVENUE
MIAMI BEACH, FLORIDA 33139

OWNER
INFINITY ESPANOLA HOTEL VENTURE, LLC
1407 BROADWAY, 30TH FLOOR
NEW YORK, NEW YORK 10018

DESIGN ARCHITECT
WILKINSON ARCHITECTS PLLC
265 CANAL STREET / SUITE 507
NEW YORK, NEW YORK 10013

LANDSCAPE ARCHITECT
GARDNER & SEMLER
17670 NW 78TH AVENUE / SUITE 214
MIAMI, FLORIDA 33015

RENDERINGS A-8

DNB
DESIGN GROUP

2020 PONCE DE LEON BOULEVARD
CORAL GABLES, FLORIDA 33134
MAIN: 305.444.5545
FAX: 305.444.5509