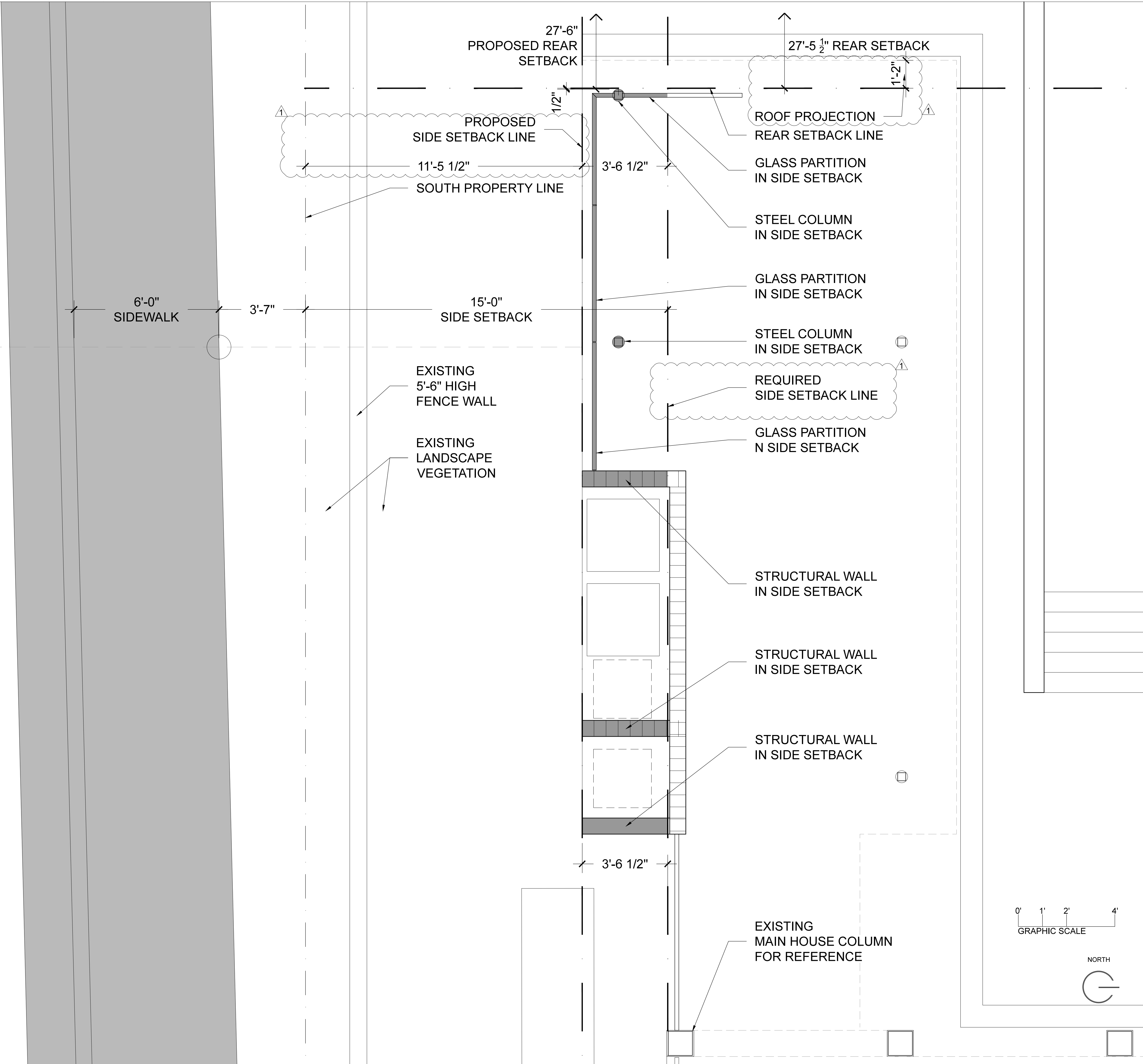


VENETIAN WAY



KEY NOTES

LEGEND

- ② KEY NOTE - SEE ABOVE FOR REFERENCE
- WTXX WALL TYPE - SEE SHEET A.6.0
- XX DOOR TYPE - SEE SHEET A.10.0
- XX EQUIPMENT SYMBOL - SEE SCHEDULE
- NEW PARTITION - SEE WALL TYPES
- EXIST. GYP. BD. PARTITION - SEE WALL TYPES
- EXIST. CMU PARTITION - SEE WALL TYPES
- EXIST. CONC. COLUMN OR WALL - SEE WALL TYPES

SHEET NOTES

- ALL CONTRACTORS SHALL FIELD MEASURE AND VERIFY ALL DIMENSIONS.
- ALL CONTRACTORS SHALL COMPLY WITH APPLICABLE LOCAL, STATE AND FEDERAL BUILDING CODES.
- APPLICABLE PERMIT SHALL BE POSTED ON SITE AT ALL TIMES.
- GC TO PROVIDE SHOP DRAWINGS FOR ALL SPECIALTY WORK, INCLUDING BUT NOT LIMITED TO WINDOWS, STEEL, MILLWORK ETC.
- ALL WORK TO COMPLY WITH: FLORIDA BUILDING CODE 2014, FLORIDA ACCESSIBILITY CODE 2014, NFPA 70 - NATIONAL ELECTRICAL CODE, FLORIDA FIRE PREVENTION CODE 2012 EDITION, NFPA 101 LIFE SAFETY CODE, NFPA 72 NATIONAL FIRE ALARM CODE.

GA
GONZALEZARCHITECTURE
4304 NE 2ND AVENUE
MIAMI FLORIDA 33137
T: 305.440.4314
F: 866.443.1486
E: create@gonzalezarchitecture.com

SEAL / SIGNATURE

ENRIQUE RENE GONZALEZ

STATE OF FLORIDA
REGISTRATION AR#4719

DRAWING ISSUE

06-18-2018 BOA FIRST SUBMITTAL

07-06-18 FINAL SUBMITTAL

COVERED PORCH
OWNER: SALI PROPERTY LLC
230 W. RIVO ALTO
MIAMI BEACH, FLORIDA 33139

DESCRIPTION

VARIANCE DIAGRAM
ENLARGED FIRST FLOOR PLAN

SCALE: 1/2" = 1'-0"

SHEET

A2.0

© 2017 Gonzalez Architecture P.A.