







1621 Bay RD | Miami Beach FL, 33139  
(786) 564 - 5337  
www.ulustudio.com

ULU STUDIO LLC

# FERRARI RESIDENCE

200 W RIVO ALTO DRIVE  
Miami Beach, FL 33139

SEAL

RUDOLF UHLEMANN  
LA 6867213

ISSUE DATE: 7/6/18

REVISIONS:  
ID DATE DESCRIPTION

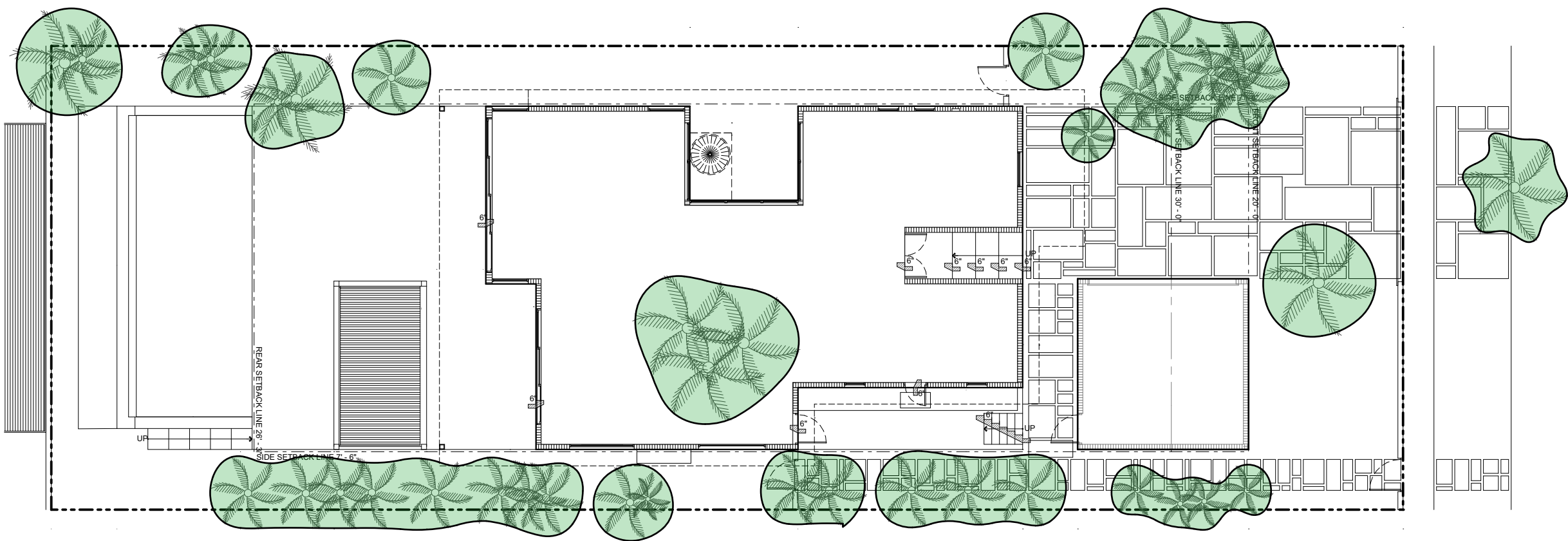
DRAWN/CHECKED: RU

DRB FINAL SUBMITTAL

PROJECT NUMBER: 1804

TREE  
DISPOSITION  
PLAN

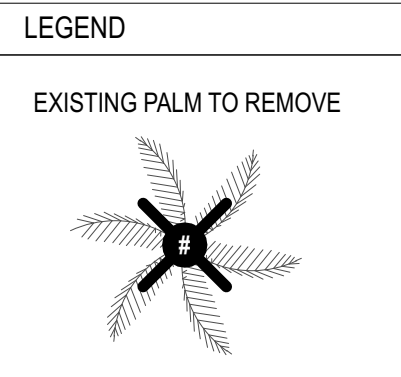
L1.0



CANOPY REMOVED	Area (SF)
	2,366

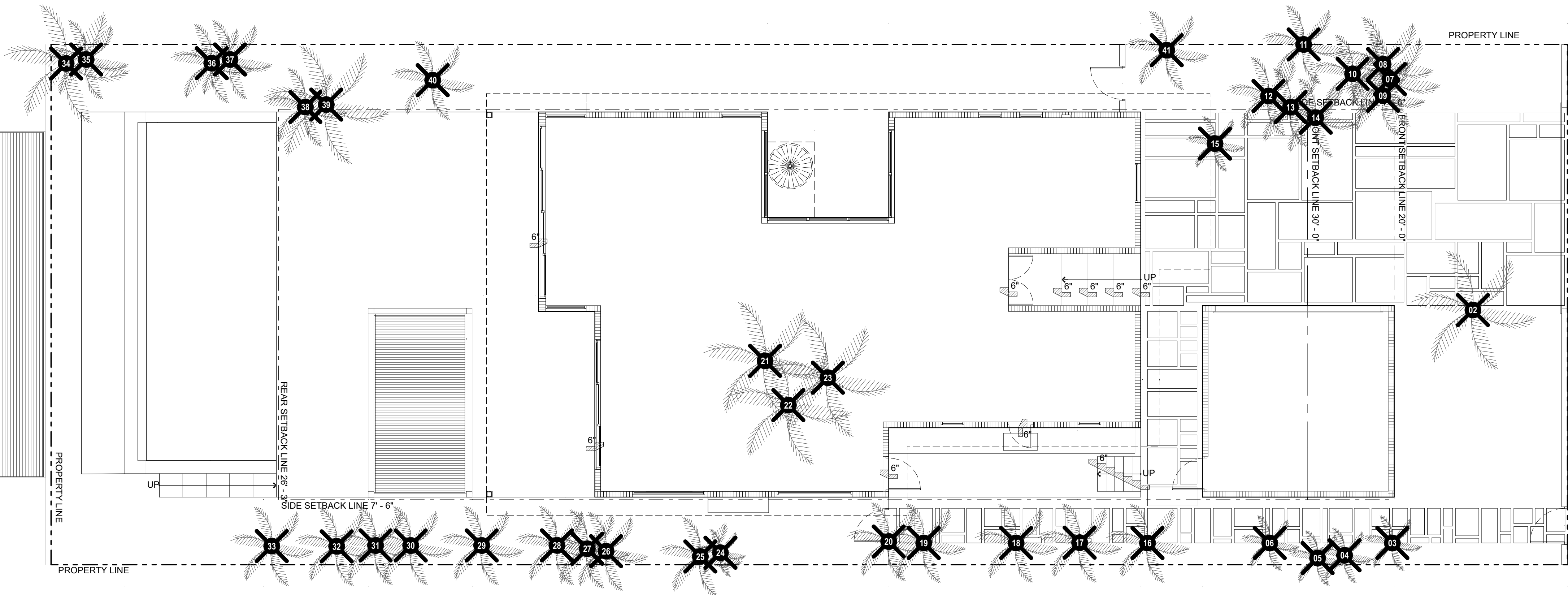
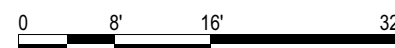
TREE REPLACEMENT CHART							
Qty	Botanical Name	Common Name	Cal	Height	Spread	Canopy Credit (each)	Canopy Credit (Total)
9	Bursera Simaruba	Gumbo Limbo	6	16' min	10	100	900
3	Cocos nucifera 'Maypan'	Coconut Palm	3	15'-25'	12	50	150
2	Coccoloba uvifera	Sea Grape	4	16	8	200	400
1	Ficus Aurea	Strangler Fig	18	20	25	300	300
6	Myrcianthes fragrans	Simpson's Stopper	2	12	10	100	600
8	Veitchia arecina	Montgomery Palm	3	16'-18'		50	400
						Total Canopy Credit =	2750
						Total Canopy Removed =	2366

NOTE: REFER TO L2.0 FOR TREE PLAN & SPECS

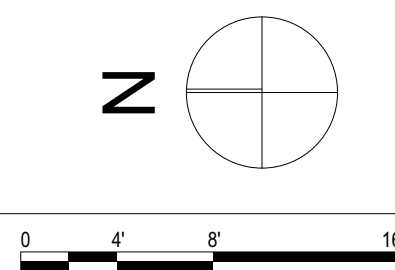


Tree Disposition Chart						
ID	Botanical Name	Common Name	DBH	Height	Spred	Action
01	Roystonea regia	Royal Palm	16	35	15	Remove
02	Phoenix dactylifera	Dade Palm	24	30	15	Remove
03	Sabal palmetto	Palmetto Palm	8	20	7	Remove
04	Archontophoenix alexandrae	Alexander Palm	4	20	7	Remove
05	Archontophoenix alexandrae	Alexander Palm	4	20	7	Remove
06	Archontophoenix alexandrae	Alexander Palm	6	30	7	Remove
07	Roystonea regia	Royal Palm	16	35	12	Remove
08	Roystonea regia	Royal Palm	16	35	12	Remove
09	Sabal palmetto	Palmetto Palm	10	30	10	Remove
10	Archontophoenix alexandrae	Alexander Palm	4	20	7	Remove
11	Archontophoenix alexandrae	Alexander Palm	4	20	7	Remove
12	Archontophoenix alexandrae	Alexander Palm	4	20	7	Remove
13	Archontophoenix alexandrae	Alexander Palm	4	20	7	Remove
14	Archontophoenix alexandrae	Alexander Palm	4	20	7	Remove
15	Archontophoenix alexandrae	Alexander Palm	10	30	7	Remove
16	Washingtonia	Washingtonia Palm	8	30	10	Remove
17	Washingtonia	Washingtonia Palm	8	30	10	Remove
18	Washingtonia	Washingtonia Palm	8	30	10	Remove
19	Washingtonia	Washingtonia Palm	8	30	10	Remove
20	Washingtonia	Washingtonia Palm	8	30	10	Remove
21	Livistona chinensis	Chinese Fan Palm	12	12	15	Remove
22	Livistona chinensis	Chinese Fan Palm	12	12	15	Remove
23	Livistona chinensis	Chinese Fan Palm	12	12	15	Remove
24	Washingtonia	Washingtonia Palm	6	30	10	Remove
25	Washingtonia	Washingtonia Palm	6	30	10	Remove
26	Washingtonia	Washingtonia Palm	6	30	10	Remove
27	Washingtonia	Washingtonia Palm	6	30	10	Remove
28	Washingtonia	Washingtonia Palm	6	30	10	Remove
29	Washingtonia	Washingtonia Palm	6	8	10	Remove
30	Washingtonia	Washingtonia Palm	6	8	10	Remove
31	Washingtonia	Washingtonia Palm	6	8	10	Remove
32	Livistona chinensis	Chinese Fan Palm	10	8	10	Remove
33	Livistona chinensis	Chinese Fan Palm	10	8	10	Remove
34	Cocos nucifera	Coconut Palm	4	20	15	Remove
35	Sabal palmetto	Palmetto Palm	10	35	10	Remove
36	Sabal palmetto	Palmetto Palm	10	35	10	Remove
37	Livistona chinensis	Chinese Fan Palm				Remove
38		Paraiso Cluster				Remove
39	Cocos nucifera	Coconut Palm	8	25	15	Remove
40		Alexander Palm Cluster				Remove
41	Washingtonia	Washingtonia Palm	8	25	10	Remove

2 TREE DISPOSITION AREA  
SCALE: 1/16" = 1'-0"



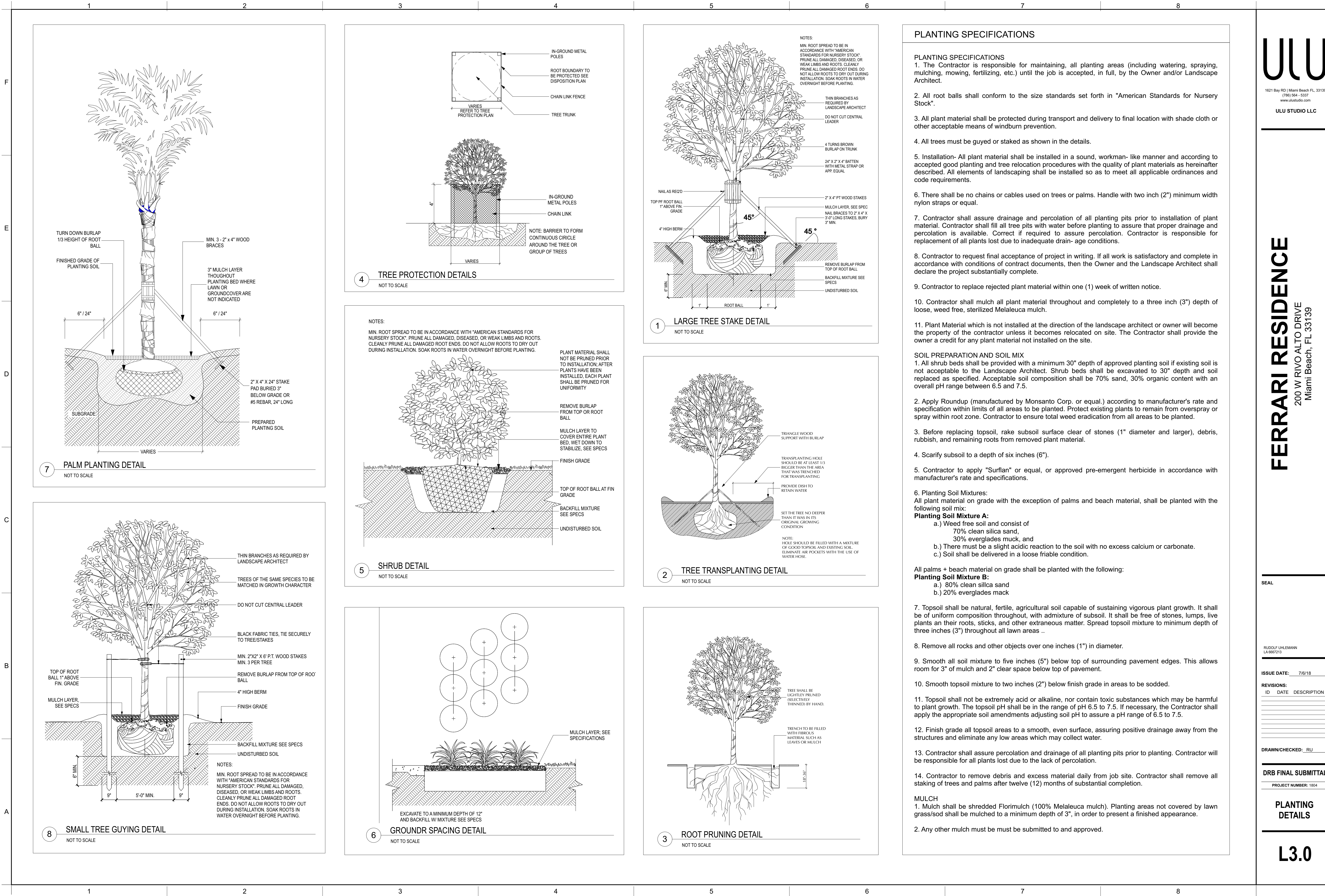
1 TREE DISPOSITION PLAN  
SCALE: 1/8" = 1'-0"













F

E

D

C

B

A

1

2

3

4

5

6

7

8

GARDEN LIGHT@LED of SE FLORIDA | LED PRODUCTS | SPECIFICATIONS

MODEL: P10 PATH LIGHT SERIES

APPLICATION:

- Paths, Walkways, Patios and Small Areas

CONSTRUCTION:

- 6061 Aluminum – Clear Anodized (SSA Model)
- 6061 Aluminum – High Performance Enamel (AB, BLK Models)
- High Performance C360 Solid Brass (BR Model)
- Tempered Mineral Glass Protective Lens

LED LIFE EXPECTANCY (TM-21 DATA):

- Greater than 60,000 hours (greater than 20 years at 8 hours per day)

DRIVER SYSTEM:

- External Driver reduces heat while extending the life of electronic components

INPUT VOLTAGE RANGE:

- 10.5 to 18 Volts AC or DC

INSTALLATION AND HARDWARE:

- LV180 Ground Stake included

LEAD WIRES:

- ULECC 18 AWG Tinned Copper Wire
- 46 inch length

ELECTRONICS WARRANTY:

- 20 Years

POWER CONSUMPTION/AVAILABLE MODELS:

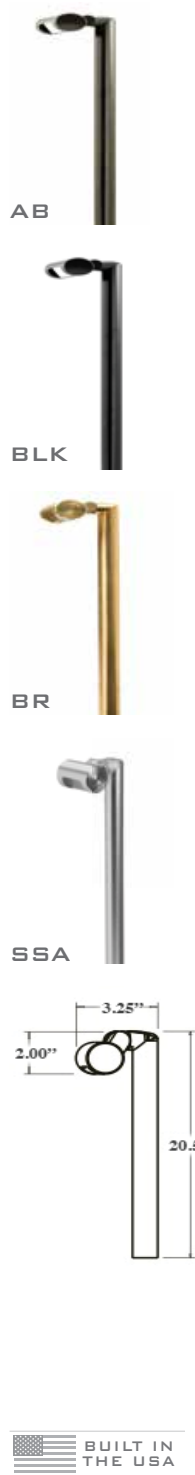
- See Power Consumption / Model Availability Table (next page)

AVAILABLE FINISHES:

- Architectural Bronze (AB) • C360 Solid Brass (BR)
- Stainless Aluminum (SSA) • Black (BLK)

ORDERING CODES  
(CHOOSE 1 ITEM FROM EACH COLUMN BELOW) EX: P10 SSA

Model #	Finish	Light Output
P10	AB	(blank) 3000K Warm White
	BLK	2700K 2700K Warm White
	BR	5000K 5000K Neutral White
	SSA	AMB Amber
	BLU	Blue
	RBL	Royal Blue
	GRN	Green
	RED	Red



60

GARDEN LIGHT@LED of SE FLORIDA | LED PRODUCTS | SPECIFICATIONS

MODEL: V2 VISIONARY SERIES

APPLICATION:

- Up light, Shadowing, Wall Wash, Silhouette, Architectural Accents

CONSTRUCTION:

- 6061 Aluminum – Clear Anodized (SSA Model)
- 6061 Aluminum – High Performance Enamel (BLK Model)
- High Performance C360 Solid Brass (BR Model)
- Tempered Mineral Glass Protective Lens

LED LIFE EXPECTANCY (TM-21 DATA):

- Greater than 60,000 hours (greater than 20 years at 8 hours per day)

DRIVER SYSTEM:

- External Driver reduces heat while extending the life of electronic components

INPUT VOLTAGE RANGE:

- 10.5 to 18 Volts AC or DC

INSTALLATION AND HARDWARE:

- LV180 Ground Stake included
- All stainless steel hardware

LEAD WIRES:

- ULECC 18 AWG Tinned Copper Wire
- 46 inch length

ELECTRONICS WARRANTY:

- 20 Years

CERTIFICATION:

- UL1838 Low Voltage Landscape Lighting

POWER CONSUMPTION/AVAILABLE MODELS:

- See Power Consumption / Model Availability Table (next page)

AVAILABLE FINISHES:

- C360 Solid Brass (BR) • Black (BLK)
- Stainless Aluminum (SSA)

ORDERING CODES  
(CHOOSE 1 ITEM FROM EACH COLUMN BELOW) EX: V2354 BLK

Model #	Wattage	Optics	Finish	Light Output
V2	10	1 (for 12°)	BLK	(blank) 3000K Warm White
	20	2 (for 25°)	BR	2700K 2700K Warm White
	35	4 (for 40°)	SSA	5000K 5000K Neutral White
		6 (for 60°)		AMB Amber
			BLU	Blue
			RBL	Royal Blue
			GRN	Green
			RED	Red



12

GARDEN LIGHT@LED of SE FLORIDA | LED PRODUCTS | SPECIFICATIONS

MODEL: WW WALL WASHER

APPLICATION:

- Up light, Shadowing, Wall Wash, Silhouette, Architectural Accents

CONSTRUCTION:

- 6061 Aluminum – Clear Anodized (SSA Model)
- 6061 Aluminum – High Performance Enamel (AB, BLK Models)
- High Performance C360 Solid Brass (BR Model)
- Tempered Mineral Glass Protective Lens

LED LIFE EXPECTANCY (TM-21 DATA):

- Greater than 60,000 hours (greater than 20 years at 8 hours per day)

DRIVER SYSTEM:

- External Driver reduces heat while extending the life of electronic components

INPUT VOLTAGE RANGE:

- 10.5 to 18 Volts AC or DC (20W-50W equivalent models)
- 12 to 18 Volts AC or DC (75W equivalent model)

INSTALLATION AND HARDWARE:

- LV180 Ground Stake included
- All stainless steel hardware

LEAD WIRES:

- ULECC 18 AWG Tinned Copper Wire
- 46 inch length

ELECTRONICS WARRANTY:

- 20 Years

CERTIFICATION:

- UL1838 Low Voltage Landscape Lighting

POWER CONSUMPTION/AVAILABLE MODELS:

- See Power Consumption / Model Availability Table (next page)

AVAILABLE FINISHES:

- Architectural Bronze (AB) • C360 Solid Brass (BR)
- Black (BLK) • Stainless Aluminum (SSA)

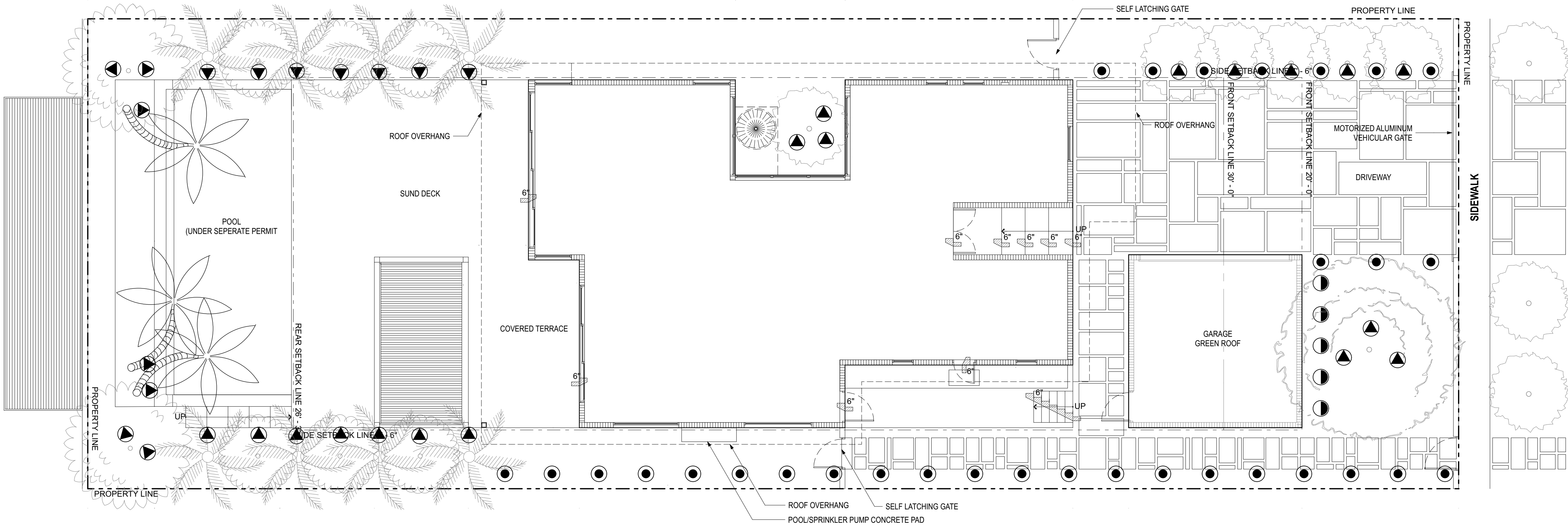
ORDERING CODES  
(CHOOSE 1 ITEM FROM EACH COLUMN BELOW) EX: WW75F BLK

Model #	Wattage	Optics	Finish	Light Output
WW	20	F (Flood)	AB	(blank) 3000K Warm White
	35		BLK	2700K 2700K Warm White
	50		BR	5000K 5000K Neutral White
	75		SSA	AMB Amber
			BLU	Blue
			RBL	Royal Blue
			GRN	Green
			RED	Red

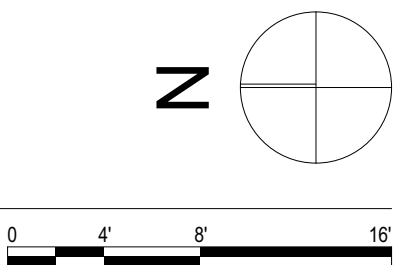


18

Lighting schedule										
2D Symbol	Light Fixture	Quantity	Manufact	Model	Voltage	Lamp	Watts	Color Temp	Material	Finish
	Path Light	31	Garden Light LED	P10	12V	LED	8 Watts	3000 K	Solid Brass	Brass
	Spot Light	32	Garden Light LED	V2	12V	LED	8 Watts	3000 K	Solid Brass	Brass
	Wall Washer	5	Garden Light LED	WW	12 vac	LED	20 watt	3000 K	Solid Brass	Brass



2 SITE LIGHTING PLAN  
SCALE: 1/8" = 1'-0"



ULU

1621 Bay RD | Miami Beach FL 33139  
(786) 564 - 5337  
www.ulustudio.com

ULU STUDIO LLC

FERRARI RESIDENCE

200 W RIVO ALTO DRIVE  
Miami Beach, FL 33139

SEAL

RUDOLF UHLEMANN  
LA 6667213

ISSUE DATE: 7/6/18

REVISIONS:

ID DATE DESCRIPTION

DRAWN/CHECKED: RU

DRB FINAL SUBMITTAL

PROJECT NUMBER: 1804

LIGHTING PLAN

L4.0