

LOT:

11412

BLOCK:

125

SUBDIVISION:

4102  
Prof. Major

ADDRESS:

955 Alton Rd

## ALTERATIONS & ADDITIONS

### BUILDING PERMITS

#26368 1/2/84 Miami Roofing - reroof 10 sqs SFBC 3403.2 \$1,650.  
#27506 10/9/85 Miami Builders Inc - general repairs no structural work \$1,500.

### PLUMBING PERMITS

### ELECTRICAL PERMITS

LOT: \_\_\_\_\_ BLOCK: \_\_\_\_\_ SUBDIVISION: \_\_\_\_\_ ADDRESS: \_\_\_\_\_

## ALTERATIONS & ADDITIONS

### BUILDING PERMITS

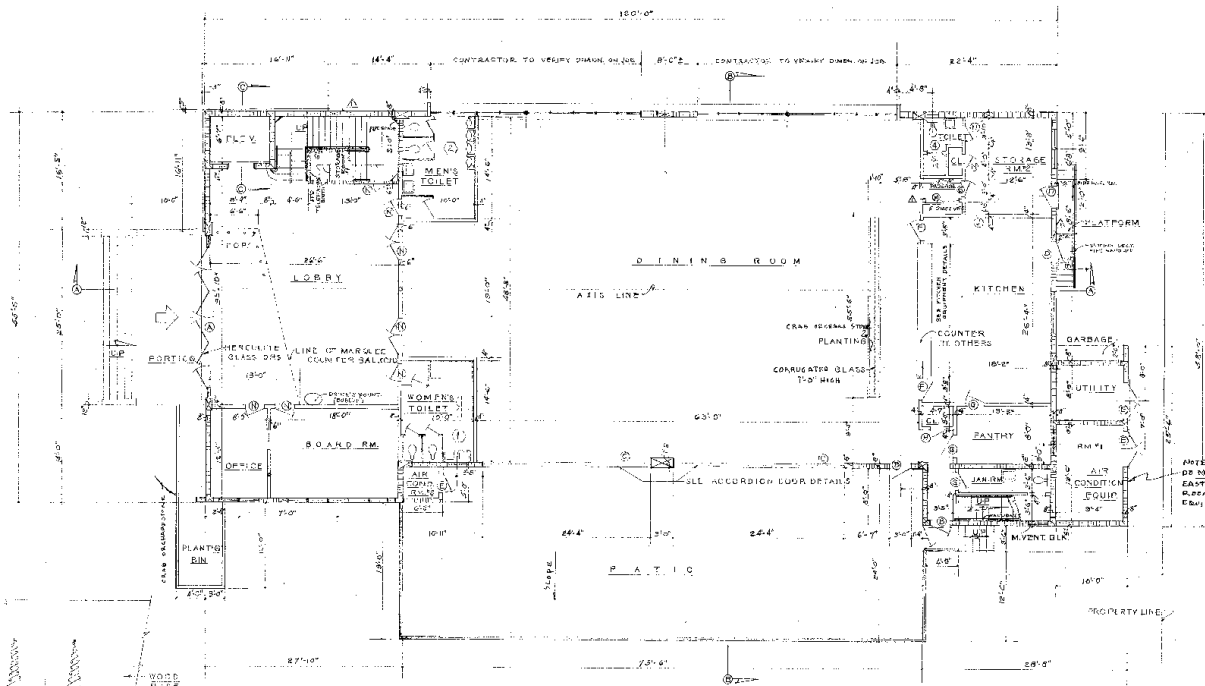
COMMENTS: VISUAL INSPECTION OF THE PREMISES INDICATES A KITCHEN APPROXIMATELY 20 x 40 ON THE FIRST FLOOR WHICH IS THE SOUTH EAST CORNER. THE BUILDING CARD INDICATES ONE GAS RANGE, FLOOR DRAINS, GREASE TRAP AND THREE SAFE WASTES WHICH INDICATE THAT A KITCHEN IN FACT WAS PERMITTED ON MAY 22, 1950 AS INDICATED ON THE FACE SHEET OF THE BUILDING CARD.

---

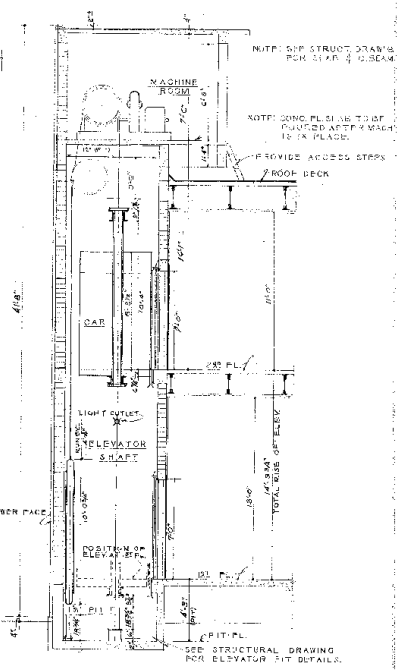
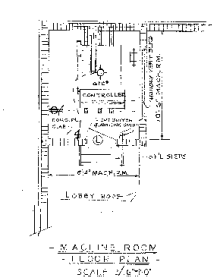
### PLUMBING PERMITS

---

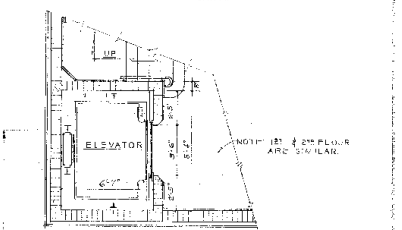
### ELECTRICAL PERMITS



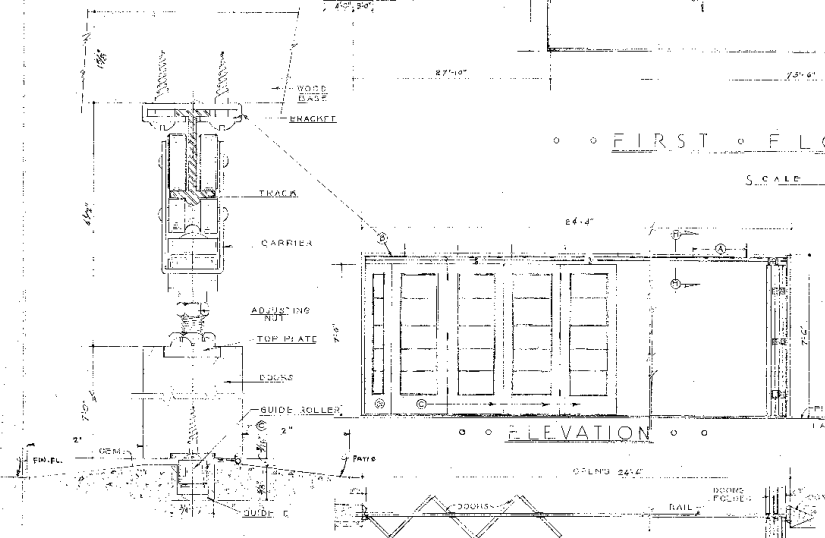
• • FIRST FLOOR PLAN • •  
SCALE 1/8" = 1'-0"



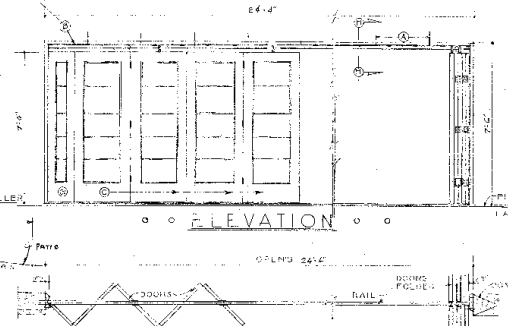
• • SECTION C-C • •



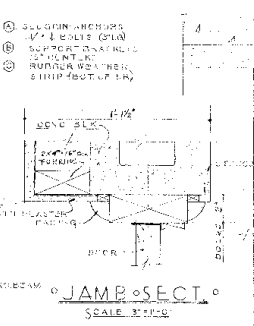
• • TYPICAL PLAN • •  
SCALE 1/8" = 1'-0"



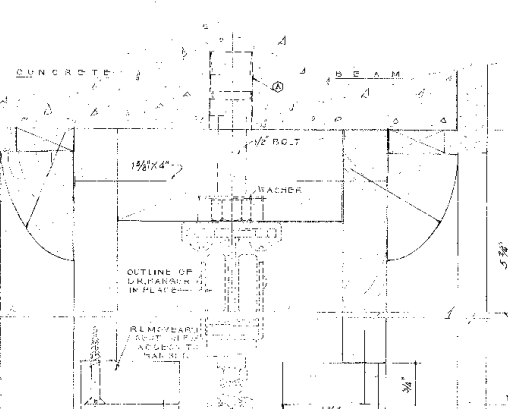
• • HANGER DETAIL • •  
FULL SIZE



• • ELEVATION • •



• • JAMB SECT. • •  
SCALE 1/8" = 1'-0"



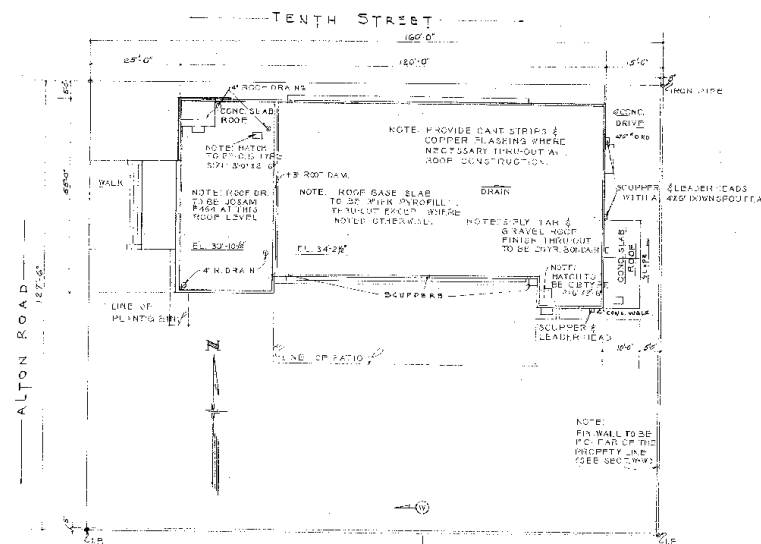
• • SECTION DETAIL H-H • •  
FULL SIZE



• • ACCORDION DOOR DETAILS • •

norman m. giller AIA			
ARCHITECT			
1875 WASHINGTON AVE., MIAMI BEACH, FLA.			
FOR			
TEMPLE BUILDING			
HUBBARD HOLDING COMPANY			
1875 WASHINGTON AVE., MIAMI BEACH, FLA.			
50111	DATE	1 MAY 17, 1959	SHEET NO.
50111	DATE	1 MAY 17, 1959	OF 12 SHEETS

REVISION: 6-7-50 DEH


$$Q_1 Q_2 L F \dots \dot{y}^2 = P - Q_1$$

LEGAL DISC: LOTS #11 & 12 BLOCK #123 LENOX MANOR MIAMI BEACH

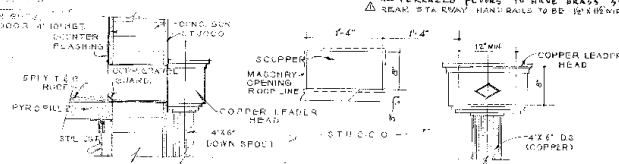
S E C O N D • F L O O R • P L A N

 $\zeta \text{ C A L E} \quad \approx 10^4 \approx 10^5$ [illegible]

DOOR • SCHEDELIJ •

MARK	DATE	LOCATION	MATERIAL	PLANTING
A	10/27/12	IN PL. LOSEY	3/4" BLACK	HERCULES PLANT
B	10/27/12	SEULI 25.5	WOOD	3 BLACK TABLES DRUG GLEA
C	10/27/12			
D	10/27/12	EASTLEY		3 BLACK COMBINATION LIND
E	10/27/12			PARTIAL RETAIL CLIPS
F	10/27/12	IN ENGIN		LOSH PANEL (PLUS) 2L 1/2" PLAIN
G	10/27/12			PLAIN 1/2" SAND
H	10/27/12			
I	10/27/12			
J	10/27/12			
K	10/27/12			
L	10/27/12			
M	10/27/12			
N	10/27/12			
O	10/27/12			
P	10/27/12			
Q	10/27/12			
R	10/27/12			
S	10/27/12			
T	10/27/12			
U	10/27/12			
V	10/27/12			
W	10/27/12			
X	10/27/12			
Y	10/27/12			
Z	10/27/12			

NOTE: MERCUITE DOORS TO BE SATIN FINISH ON INSIDE, ALSO 3/4" x 3/4" LODGE EMPLY TO BE LEFT CLEAR SLASH CENTER OF EACH DOOR AND 10" ALUM. THRESHOLDS PROVIDED FOR ALL EXTERIOR DOORS.

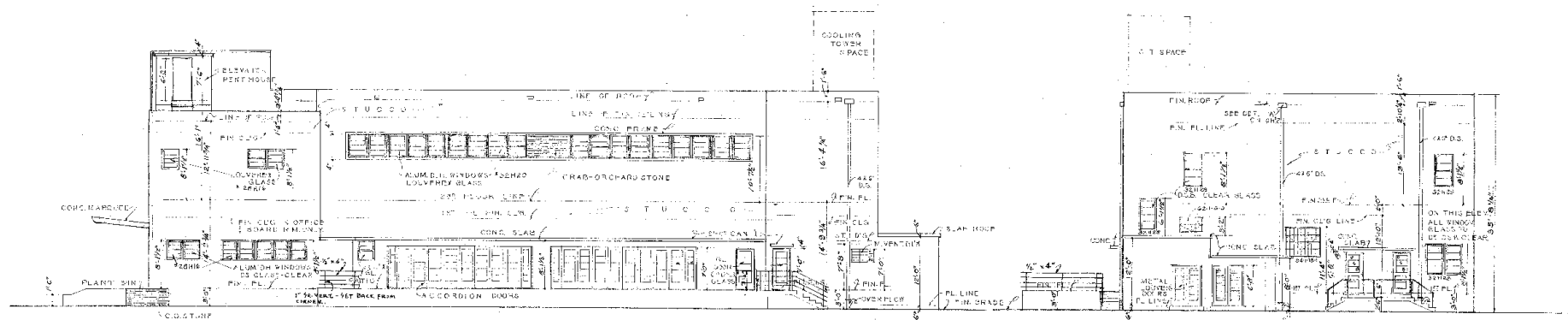


• • DETAIL 'A' SCUPPER & LEADER HEADS • •

Δ REVISIONS 6-7-56 DEH

norman m giller AIA  
ARCHITECT

5011  
26P12

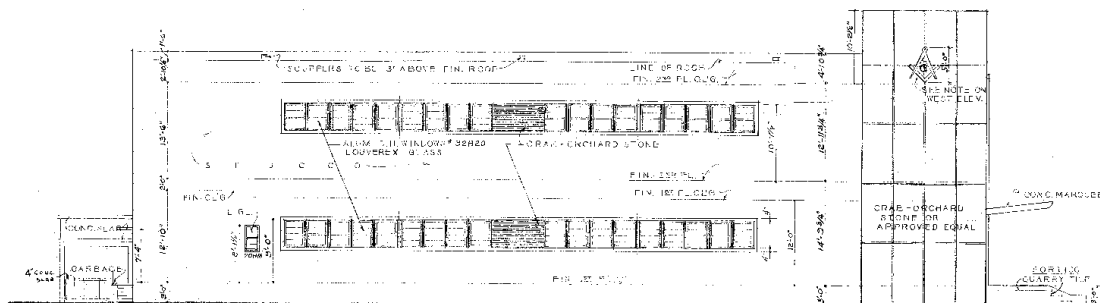


• • SOUTH ELEVATION • •

SCALE 1/4" = 1'-0"

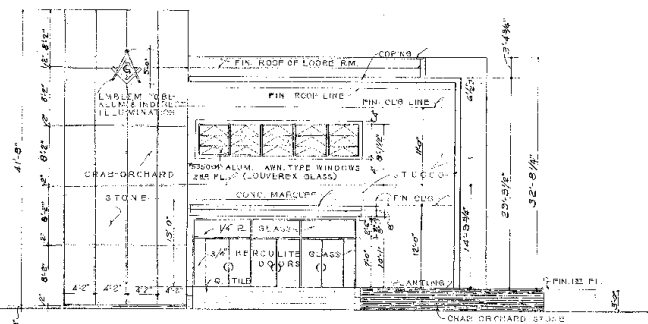
• • EAST ELEVATION • •

SCALE 1/4" = 1'-0"



• • NORTH ELEVATION • •

SCALE 1/4" = 1'-0"



• • WEST ELEVATION • •

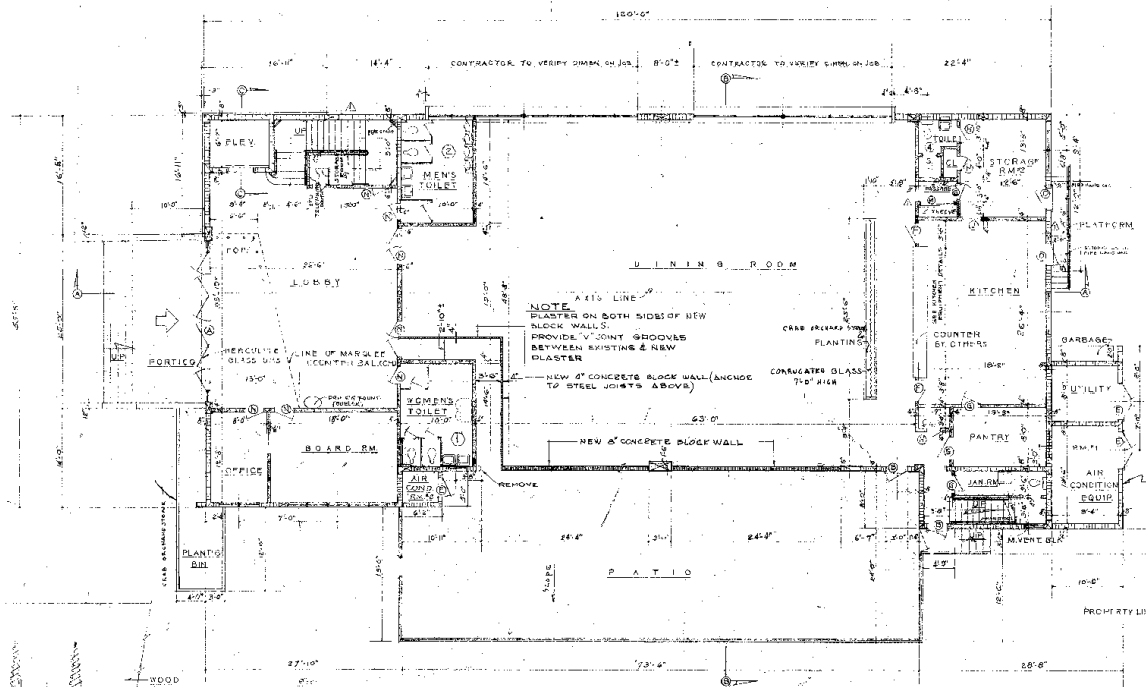
SCALE 1/4" = 1'-0"

- NOTES
1. ALL WINDOWS TO BE ALUM. AS SHOWN EXCEPT SECURITY WINDOWS WHICH ARE STEEL.
  2. ALL ALUM. WINDOW EXCEPT SPRING TYPE TO BE CYLINDRICAL IN APPROVED EQUAL TYPE TO BE CYLINDRICAL IN APPROVED EQUAL.
  3. SECURITY WINDOWS TO BE PAINTED WITH "TRUSCON" PAINT BEFORE INSTALLED.

norman m. giller AIA  
ARCHITECT

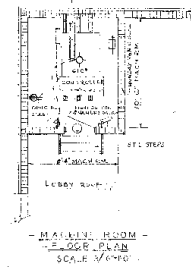


THIS PLANS ARE THE PROPERTY OF  
THE ARCHITECT AND CANNOT BE  
REPRODUCED OR USED IN ANY MANNER  
WITHOUT THE WRITTEN CONSENT OF  
THE ARCHITECT.

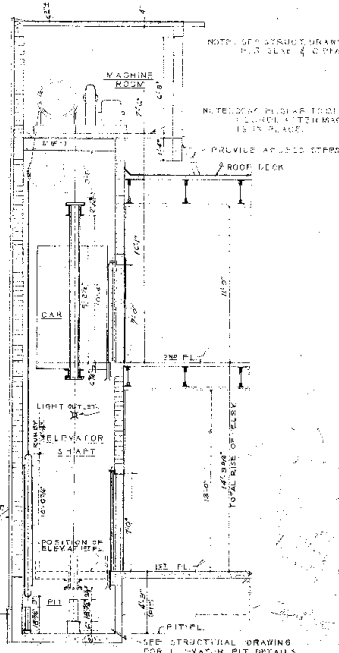


• • FIRST FLOOR PLAN • •

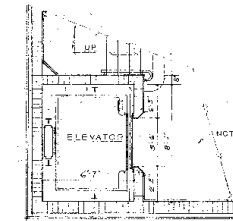
SCALE 1/8" = 1'-0"



MAIN FLOOR PLAN  
SCALE 1/8" = 1'-0"

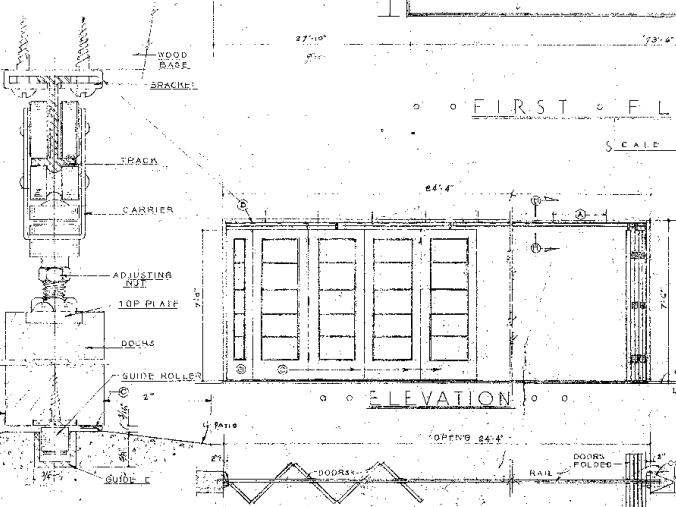


• • SECTION C-C • •



• • TYPICAL PLAN • •

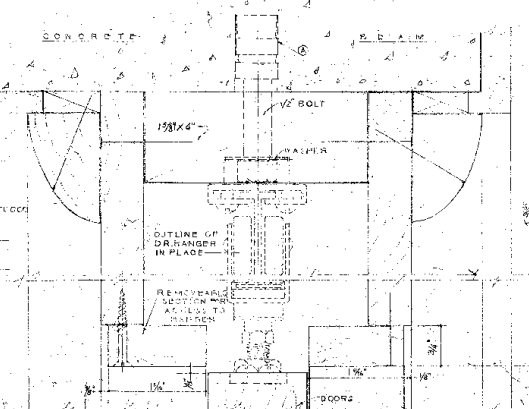
SCALE 1/8" = 1'-0"



• • ELEVATION • •

• • JAMB SECT • •

SCALE 1/8" = 1'-0"



• • SECTION DETAIL H-H • •

SCALE 1/8" = 1'-0"

• • HANGER DETAIL • •

SCALE 1/8" = 1'-0"

• • PLAN • •

SCALE 1/8" = 1'-0"

• • ACCORDION DOOR DETAIL • •

norman m. giller AIA  
ARCHITECT  
1675 WASHINGTON AVE. MIAMI BEACH, FLA.  
— TEMPLE BUILDING —  
— HIBISCUS PARK —  
ALTON ROAD AT 101ST MIAMI BEACH, FLA.  
COMM. NO. DRAWN BY DATE SHEET NO.  
50111 P.M.C. MAY 12, 1957 1  
N.M.G.

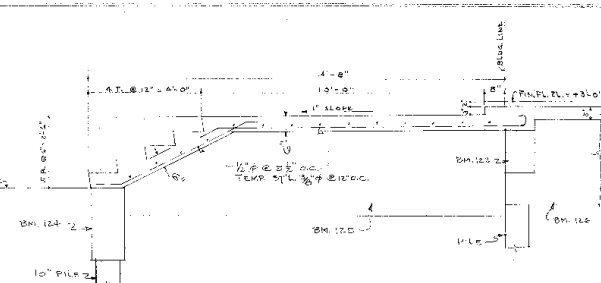
REVISION: 5-17-57



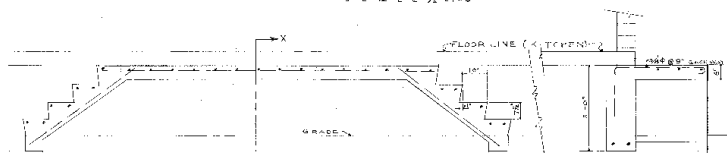
[illegible]

NOTES

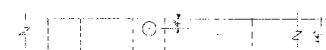
1. ALL CONC. TO BE DESIGNED FOR A MIN. 28 DAY COMPRESSIVE STRENGTH OF 2800 PSI PER IN<sup>2</sup>.
2. REINF. STL. TO BE BENT & LAPPED IN ACCORDANCE WITH A.C.I. STD. DETAILS & SPECS.



SECTION C-C

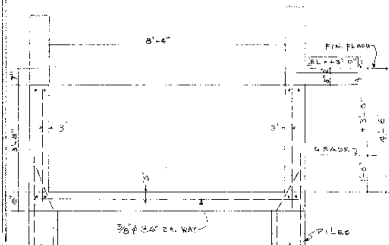


DETAIL OF STEPS & PLATFORM ON EAST END

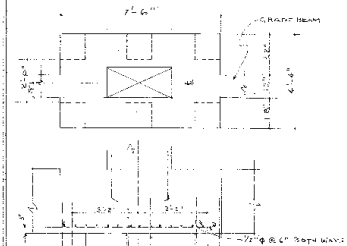


## SLAVE SCHEDULE

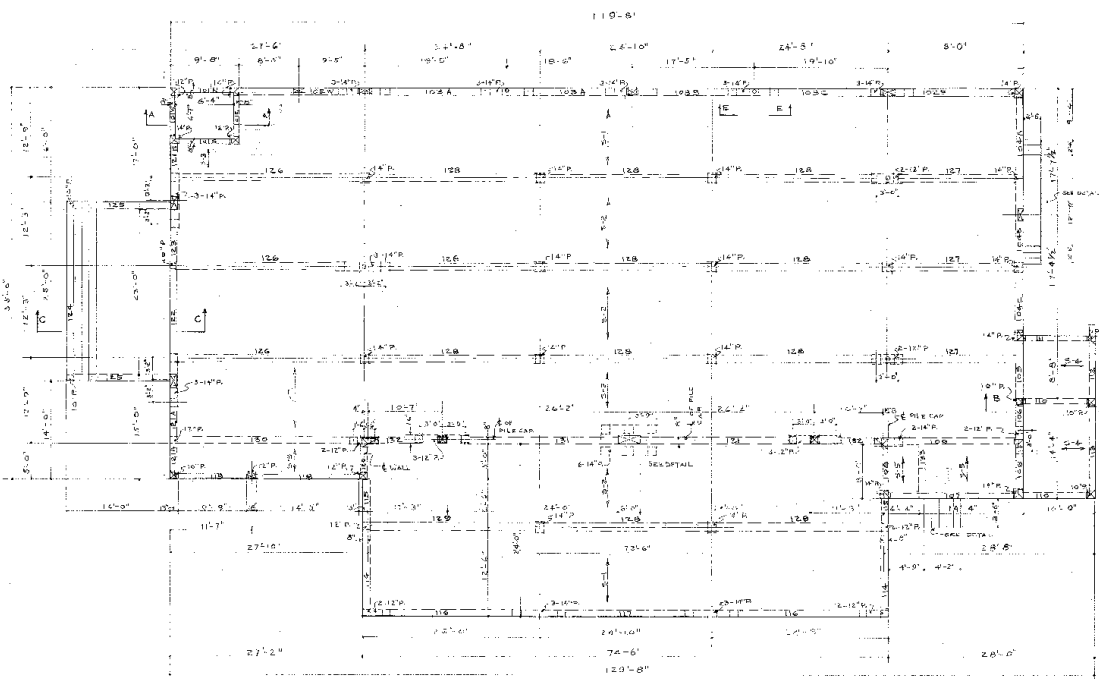
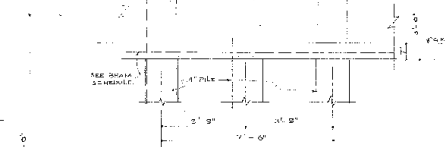
- |     |         |   |                             |
|-----|---------|---|-----------------------------|
| S-1 | 5" SLAB | 3/8" SW' C.C. STR., 5/8" @ 14" O.C. BENT (ALT. 7' O.C.) | TEMP. DT'L. 3/8" @ 12" O.C. |
| S-2 | 5" SLAB | DO" DO  | DO                          |
| S-3 | 5" SLAB | CONTINUE TOP OF BOT. DT'L FROM S-2                      | DO                          |
| S-4 | 5" SLAB | 1/2" @ 6" O.C. ALT. BENT                                | DO                          |
| S-5 | 4" SLAB | CONTINUE TOP DT'L FROM S-2; 3/8" @ 7"                   | DO                          |



SECTION A-A

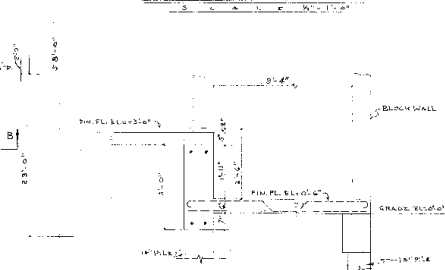


DETAIL OF 6 PILE CAP.

[illegible]

SECTION E-5

TYPICAL 3-PILE CAP



### SECTION B-B

SECTION 8-B  
5 C 4 A, E  
WHEN FLAGMAN AND TWO POLICE OFFICERS  
THE MARCHING BAND CAME TO THE  
STREET CORNER OF 14TH ST AND W 4TH  
STREET, THE MARCHING BAND CAME TO  
THE MARCHING BAND CAME TO THE

norman n. giller AIA  
A R C H I T E C T

REV. 5-13-50  
REV. 2-15-50  
REV. 4-23-50  
4-24-50

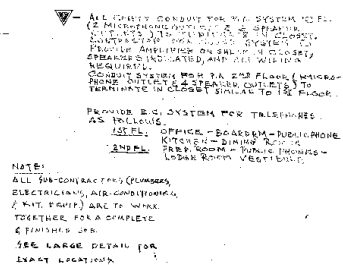
**JULES P. CHANNING**  
Consulting Engineer  
MIAMI BEACH, FLORIDA

**JULES P. CHANNIN**  
Consulting Engineer  
MIAMI BEACH, FLORIDA

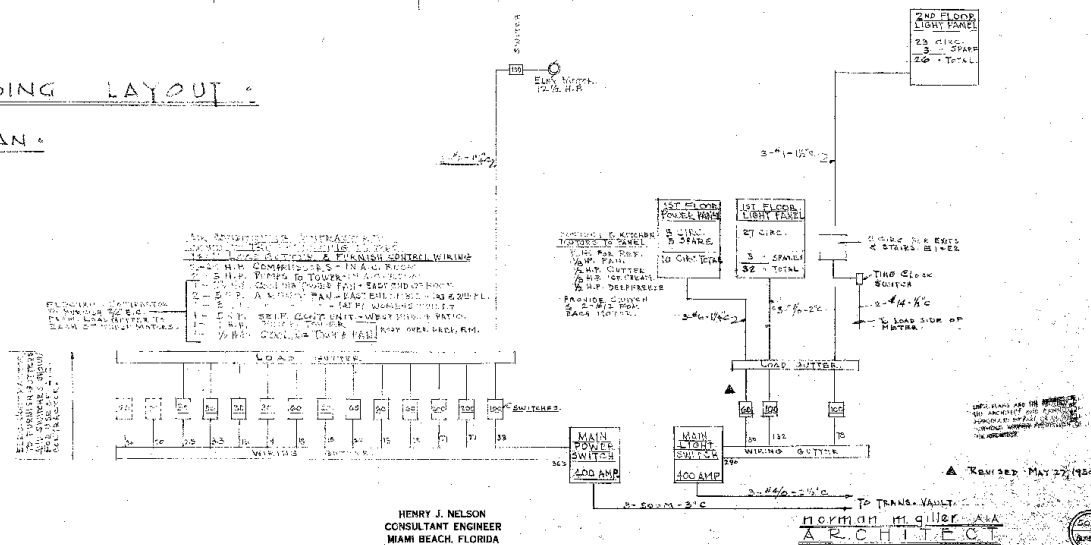
5011  
5CF:2

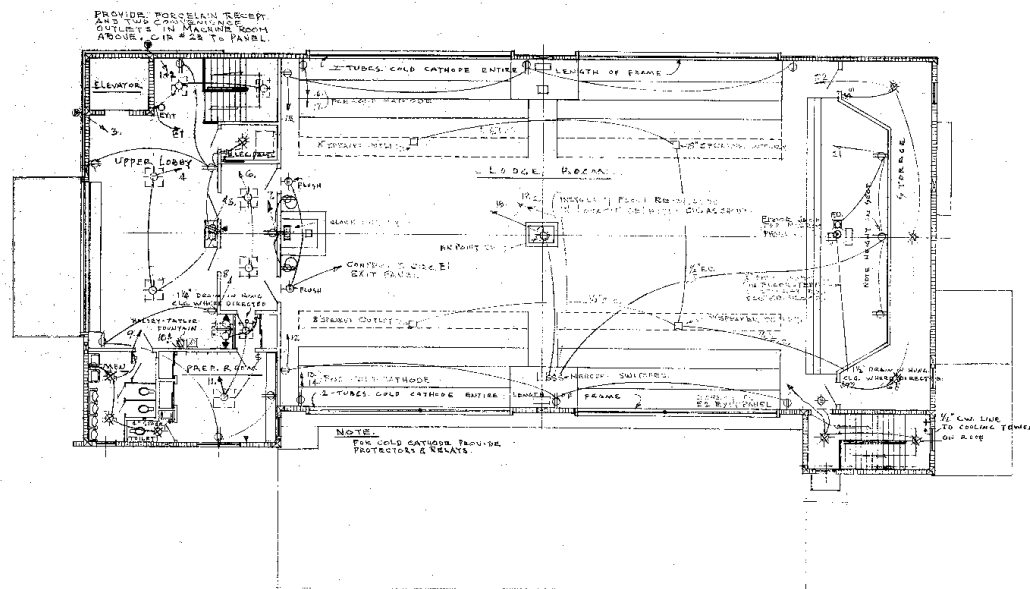
FOUNDATION & 1<sup>ST</sup> FLOOR PLAN





FIRST FLOOR PLAN.

$$1.6 \text{ mLE} \cdot 1/8'' = 1'-0''$$




# • ELECTRICAL & PLUMBING LAYOUT •

## • SECOND FLOOR PLAN •

SCALE: 1/8" = 1'-0"

HENRY J. NELSON  
CONSULTANT ENGINEER  
MIAMI BEACH, FLORIDA

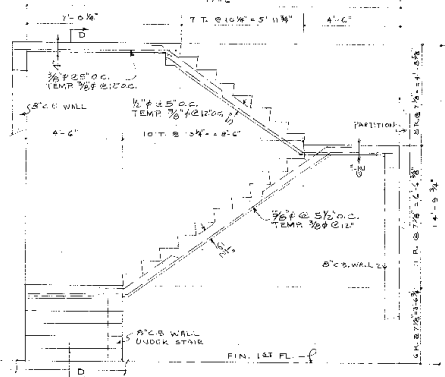
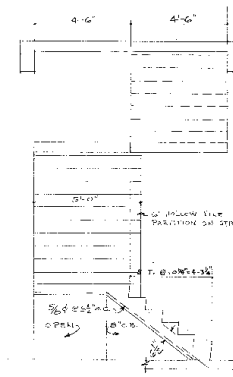
norman m. giller AIA  
ARCHITECT



THIS PLAN IS THE PROPERTY OF  
NORMAN M. GILLER ARCHITECTS  
AND SHOULD BE KEPT IN THE  
OFFICE OF THE ARCHITECT  
UNLESS OTHERWISE NOTED ON  
THE DRAWING.

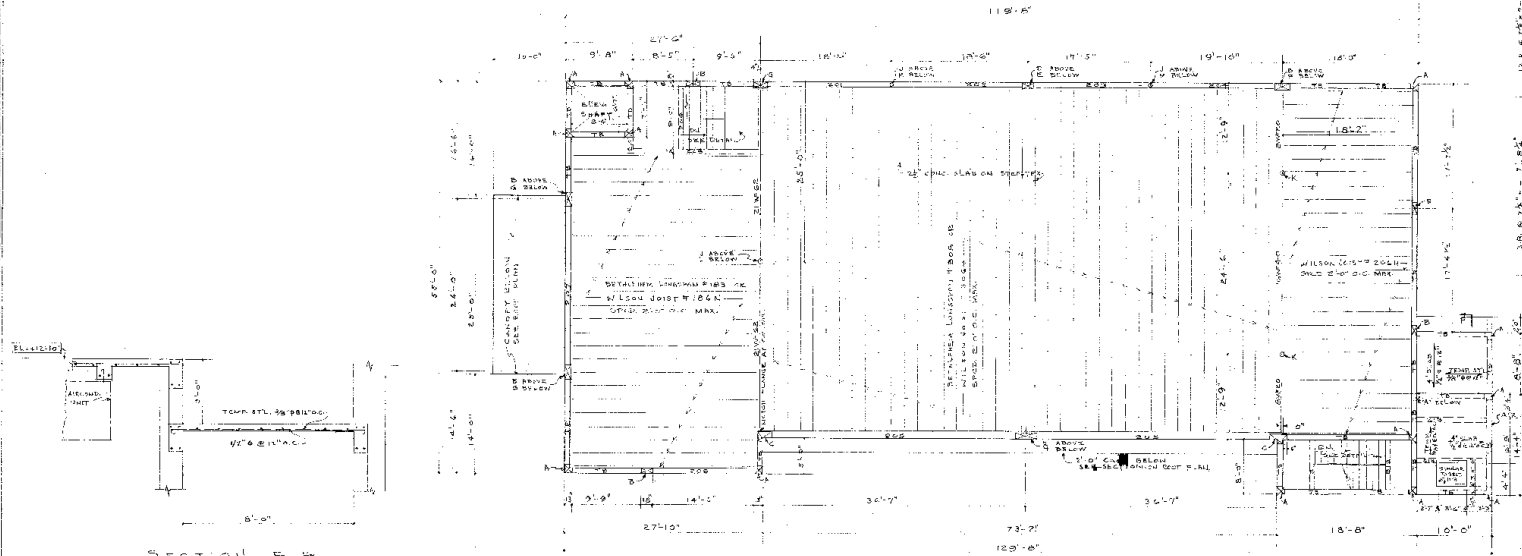
BEAM SCHEDULE									
MARK	SIZE	NO.	SPACING	REMARKS					
201A	8"x10"	1	12" O.C.	STU SECTION					
201B	8"x10"	1	12" O.C.	SEE SECTION					
202	8"x10"	1	12" O.C.	SEE SECTION					
203	8"x10"	1	12" O.C.	SEE SECTION					
204	8"x10"	1	12" O.C.	SEE SECTION					
205	8"x10"	1	12" O.C.	SEE SECTION					
206	8"x10"	1	12" O.C.	SEE SECTION					
207	8"x10"	1	12" O.C.	SEE SECTION					
208	8"x10"	1	12" O.C.	SEE SECTION					
209	8"x10"	1	12" O.C.	SEE SECTION					
210	8"x10"	1	12" O.C.	SEE SECTION					
211	8"x10"	1	12" O.C.	SEE SECTION					
212	8"x10"	1	12" O.C.	SEE SECTION					
213	8"x10"	1	12" O.C.	SEE SECTION					
214	8"x10"	1	12" O.C.	SEE SECTION					
215	8"x10"	1	12" O.C.	SEE SECTION					
216	8"x10"	1	12" O.C.	SEE SECTION					
217	8"x10"	1	12" O.C.	SEE SECTION					
218	8"x10"	1	12" O.C.	SEE SECTION					
219	8"x10"	1	12" O.C.	SEE SECTION					
220	8"x10"	1	12" O.C.	SEE SECTION					
221	8"x10"	1	12" O.C.	SEE SECTION					
222	8"x10"	1	12" O.C.	SEE SECTION					
223	8"x10"	1	12" O.C.	SEE SECTION					
224	8"x10"	1	12" O.C.	SEE SECTION					
225	8"x10"	1	12" O.C.	SEE SECTION					
226	8"x10"	1	12" O.C.	SEE SECTION					
227	8"x10"	1	12" O.C.	SEE SECTION					
228	8"x10"	1	12" O.C.	SEE SECTION					
229	8"x10"	1	12" O.C.	SEE SECTION					
230	8"x10"	1	12" O.C.	SEE SECTION					
231	8"x10"	1	12" O.C.	SEE SECTION					
232	8"x10"	1	12" O.C.	SEE SECTION					
233	8"x10"	1	12" O.C.	SEE SECTION					
234	8"x10"	1	12" O.C.	SEE SECTION					
235	8"x10"	1	12" O.C.	SEE SECTION					
236	8"x10"	1	12" O.C.	SEE SECTION					
237	8"x10"	1	12" O.C.	SEE SECTION					
238	8"x10"	1	12" O.C.	SEE SECTION					
239	8"x10"	1	12" O.C.	SEE SECTION					
240	8"x10"	1	12" O.C.	SEE SECTION					
241	8"x10"	1	12" O.C.	SEE SECTION					
242	8"x10"	1	12" O.C.	SEE SECTION					
243	8"x10"	1	12" O.C.	SEE SECTION					
244	8"x10"	1	12" O.C.	SEE SECTION					
245	8"x10"	1	12" O.C.	SEE SECTION					
246	8"x10"	1	12" O.C.	SEE SECTION					
247	8"x10"	1	12" O.C.	SEE SECTION					
248	8"x10"	1	12" O.C.	SEE SECTION					
249	8"x10"	1	12" O.C.	SEE SECTION					
250	8"x10"	1	12" O.C.	SEE SECTION					
251	8"x10"	1	12" O.C.	SEE SECTION					
252	8"x10"	1	12" O.C.	SEE SECTION					
253	8"x10"	1	12" O.C.	SEE SECTION					
254	8"x10"	1	12" O.C.	SEE SECTION					
255	8"x10"	1	12" O.C.	SEE SECTION					
256	8"x10"	1	12" O.C.	SEE SECTION					
257	8"x10"	1	12" O.C.	SEE SECTION					
258	8"x10"	1	12" O.C.	SEE SECTION					
259	8"x10"	1	12" O.C.	SEE SECTION					
260	8"x10"	1	12" O.C.	SEE SECTION					
261	8"x10"	1	12" O.C.	SEE SECTION					
262	8"x10"	1	12" O.C.	SEE SECTION					
263	8"x10"	1	12" O.C.	SEE SECTION					
264	8"x10"	1	12" O.C.	SEE SECTION					
265	8"x10"	1	12" O.C.	SEE SECTION					
266	8"x10"	1	12" O.C.	SEE SECTION					
267	8"x10"	1	12" O.C.	SEE SECTION					
268	8"x10"	1	12" O.C.	SEE SECTION					
269	8"x10"	1	12" O.C.	SEE SECTION					
270	8"x10"	1	12" O.C.	SEE SECTION					
271	8"x10"	1	12" O.C.	SEE SECTION					
272	8"x10"	1	12" O.C.	SEE SECTION					
273	8"x10"	1	12" O.C.	SEE SECTION					
274	8"x10"	1	12" O.C.	SEE SECTION					
275	8"x10"	1	12" O.C.	SEE SECTION					
276	8"x10"	1	12" O.C.	SEE SECTION					
277	8"x10"	1	12" O.C.	SEE SECTION					
278	8"x10"	1	12" O.C.	SEE SECTION					
279	8"x10"	1	12" O.C.	SEE SECTION					
280	8"x10"	1	12" O.C.	SEE SECTION					
281	8"x10"	1	12" O.C.	SEE SECTION					
282	8"x10"	1	12" O.C.	SEE SECTION					
283	8"x10"	1	12" O.C.	SEE SECTION					
284	8"x10"	1	12" O.C.	SEE SECTION					
285	8"x10"	1	12" O.C.	SEE SECTION					
286	8"x10"	1	12" O.C.	SEE SECTION					
287	8"x10"	1	12" O.C.	SEE SECTION					
288	8"x10"	1	12" O.C.	SEE SECTION					
289	8"x10"	1	12" O.C.	SEE SECTION					
290	8"x10"	1	12" O.C.	SEE SECTION					
291	8"x10"	1	12" O.C.	SEE SECTION					
292	8"x10"	1	12" O.C.	SEE SECTION					
293	8"x10"	1	12" O.C.	SEE SECTION					
294	8"x10"	1	12" O.C.	SEE SECTION					
295	8"x10"	1	12" O.C.	SEE SECTION					
296	8"x10"	1	12" O.C.	SEE SECTION					
297	8"x10"	1	12" O.C.	SEE SECTION					
298	8"x10"	1	12" O.C.	SEE SECTION					
299	8"x10"	1	12" O.C.	SEE SECTION					
300	8"x10"	1	12" O.C.	SEE SECTION					

COLUMN SCHEDULE				
MARK	SIZE	VERT. STL.	TIES	REMARKS
A	12"x12"	4-#8	1/2" @ 12"	
B	12"x12"	4-#8	1/2" @ 12"	
C	12"x12"	4-#8	1/2" @ 12"	
D	12"x12"	4-#8	1/2" @ 12"	
E	12"x12"	4-#8	1/2" @ 12"	
F	12"x12"	4-#8	1/2" @ 12"	
G	12"x12"	4-#8	1/2" @ 12"	
H	12"x12"	4-#8	1/2" @ 12"	
I	12"x12"	4-#8	1/2" @ 12"	
J	12"x12"	4-#8	1/2" @ 12"	
K	12"x12"	4-#8	1/2" @ 12"	
L	12"x12"	4-#8	1/2" @ 12"	
M	12"x12"	4-#8	1/2" @ 12"	

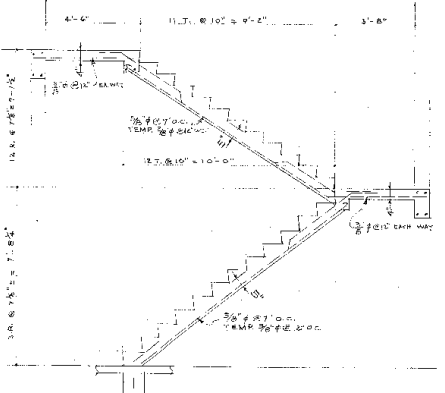


SECTION D-D  
SCALE 1/4" = 1'-0"

DETAIL WEST STAIR  
SCALE 1/4" = 1'-0"



2ND FLOOR FRAMING  
SCALE 1/4" = 1'-0"

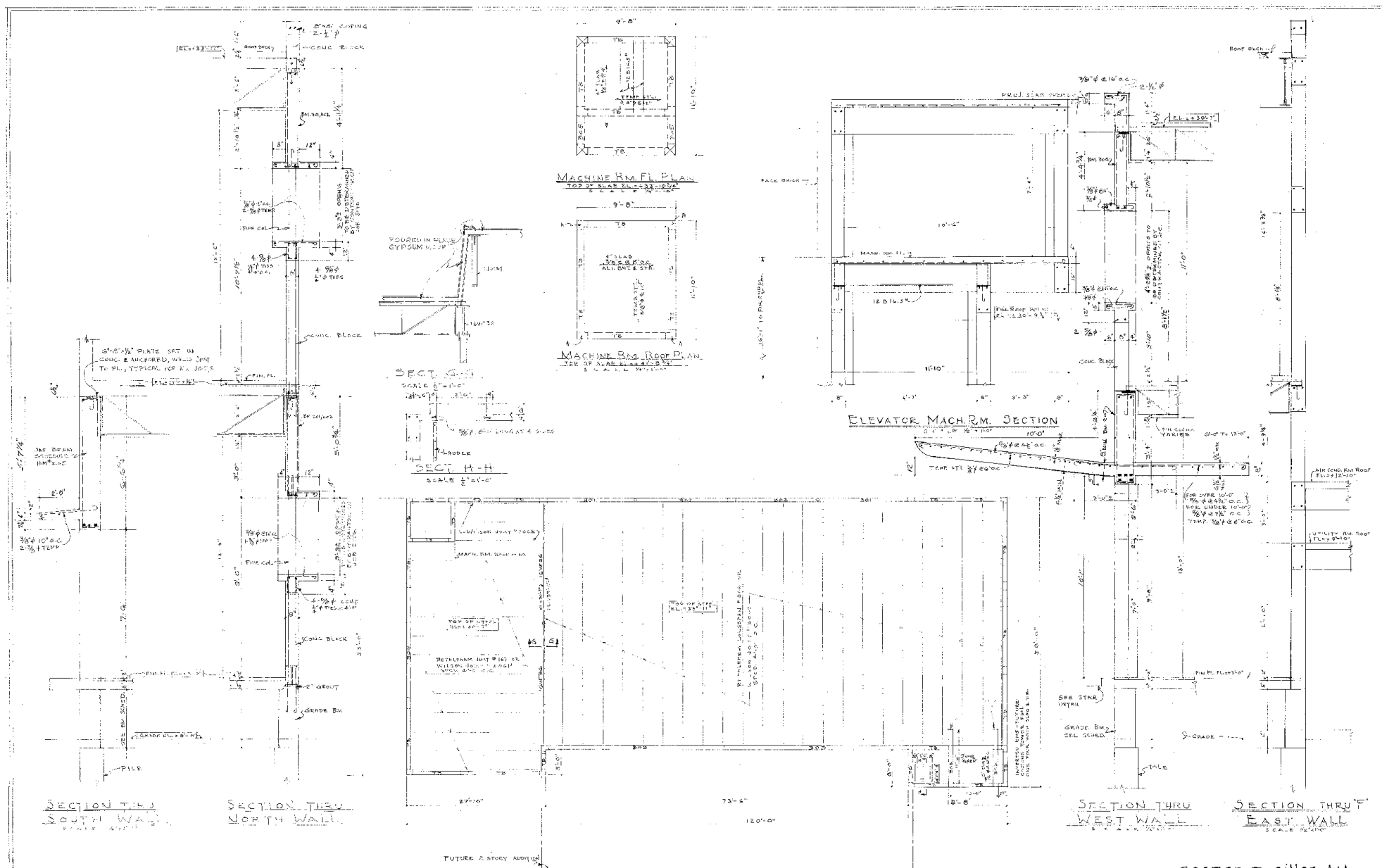


DETAIL EAST STAIR  
SCALE 1/4" = 1'-0"

norman m. giller - AIA  
ARCHITECT

5-10-50  
JULES P. CHANNING  
Consulting Engineer  
MIAMI BEACH, FLORIDA





ROOF FRAMING PLAN  
1/8" = 1'-0"

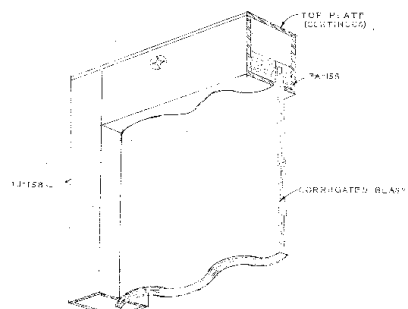
norman m. giller - A.A.  
ARCHITECT

2-10-50  
5-4-50 PREL.  
JULES P. CHANNING  
Consulting Engineer  
MIAMI BEACH, FLORIDA

REC'D FROM SET AND APPROVED BY  
FOR APPROVAL AND SIGNATURE OF  
OWNER OR PART OF A GROUP  
BY ARCHITECT

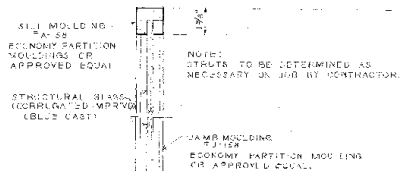






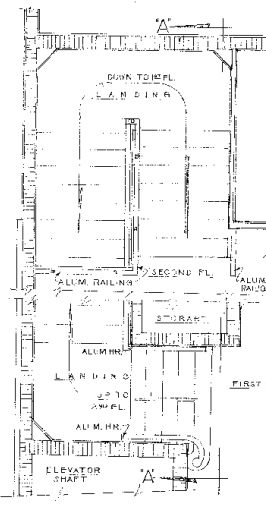
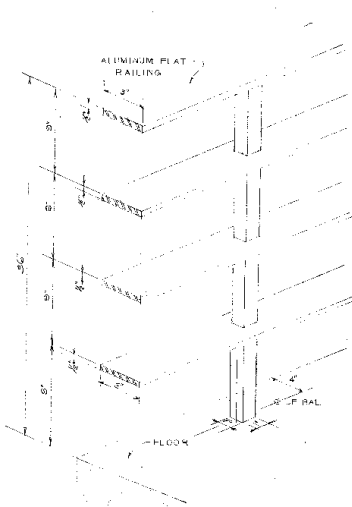
• • TYPICAL TOP RAIL DETAIL • •

NOT TO SCALE - ISOMETRIC

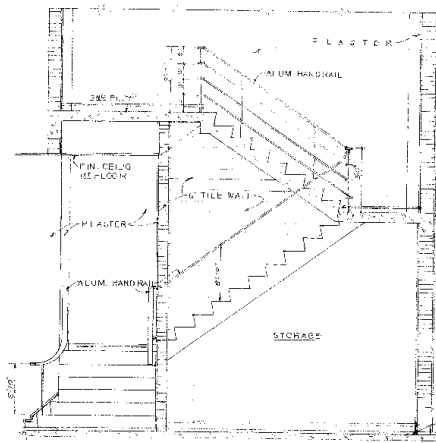


• • HAND RAIL DETAIL • •

NO SCALE

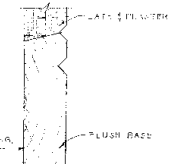


• • PLAN • •

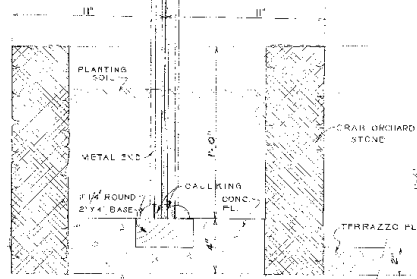


• • SECTION THRU STAIRS AT A-A • •

SCALE: 1/4\"/>



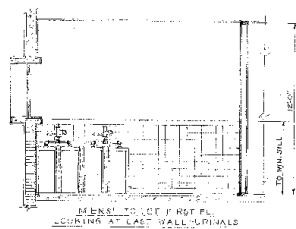
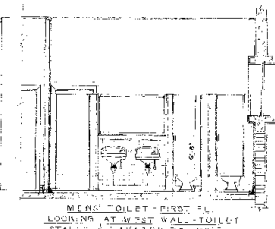
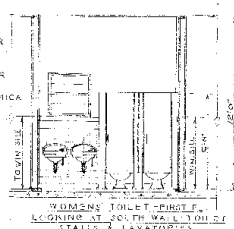
• • FULL SIZE BASE • •



• • SECT ON THRU GLASS SCREEN • •

SCALE: 1/4\"/>

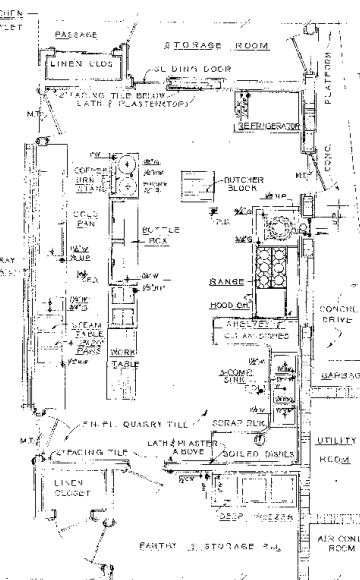
NOTES FOR TOILET'S ONLY  
- ALL EXPOSED METAL MIRROR FRAMES & FLOWING TO BE ON-ROME FINISH THRU-OUT.  
- SEE ROOM FINISH SCHEDULE FOR FINISH WORK IN ALL TOILETS.  
- WALL TOILET STALLS TO USE FORMICA FINISH INSIDE & OUTSIDE.



• • TOILET ROOM DETAILS - ELEVATIONS • •

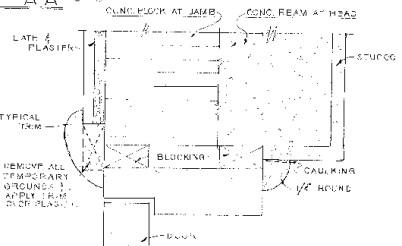
SCALE: 1/4\"/>

LEGEND FOR KITCHEN  
① ELECTRICAL OUTLET  
② WASTE TIGHT  
③ HOT WATER  
④ COLD WATER  
⑤ GAS  
⑥ FLOOR DRAIN



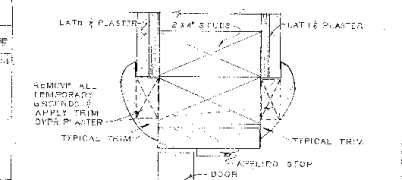
• • KITCHEN DETAIL PLAN • •

SCALE: 1/4\"/>



• • EXTERIOR DOOR FRAME • •

1/2\"/>



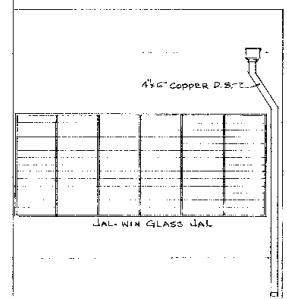
• • INTERIOR DOOR FRAME • •

1/2\"/>

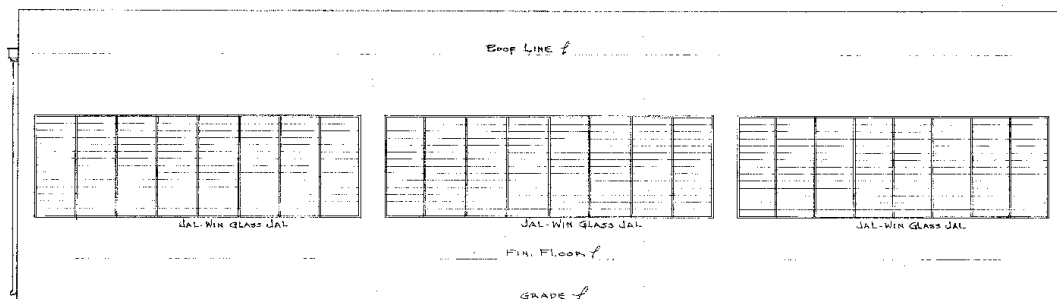
Norman M. Gillet AIA  
A. R. CHILJE, C.T.

THIS DRAWING AND THE PROPERTY OF THE ARCHITECT AND ENGINEER. NO PART OF THIS DRAWING IS TO BE REPRODUCED OR TRANSMITTED IN ANY FORM OR BY ANY MEANS, ELECTRONIC OR MECHANICAL, WITHOUT PERMISSION IN WRITING.

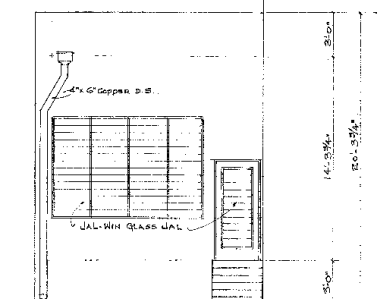




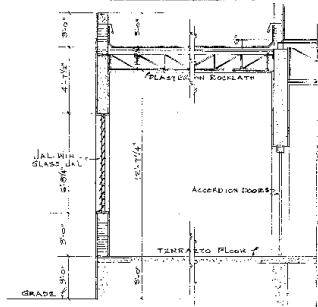
WEST ELEVATION



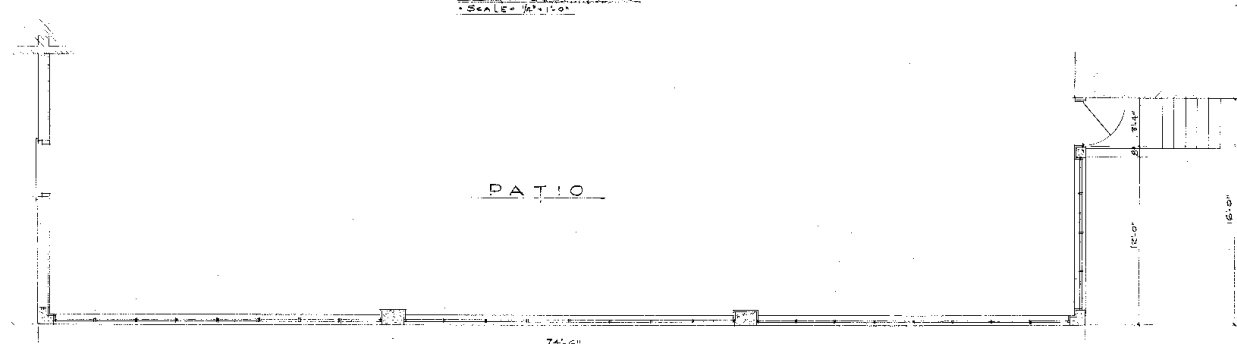
SOUTH ELEVATIONS  
SCALE: 1/4" = 1'-0"



EAST ELEVATION



SECTION  
SCALE: 1/4" = 1'-0"



FLOOR PLAN  
SCALE: 1/4" = 1'-0"

NORMAN M. GILLER A-I-A  
ARCHITECT  
1575 WASHINGTON AVE. MIAMI BEACH, FLA.  
ADDENDUM NO. 1  
TO  
TEMPLE BUILDING FOR  
HIDISCUS HOLDING CO.  
MIAMI BEACH, FLA.  
COMM NO 50111 DATE: 6-20-50 BY: H.H.

16 x 20  
18 x 22

THIS PLAN IS THE PROPERTY OF  
THE ARCHITECT AND CANNOT BE  
REPRODUCED OR COPIED IN ANY  
MANNER WITHOUT HIS PERMISSION  
NO. 100-1000