

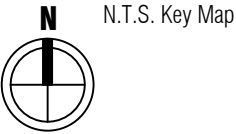
1 - Lenox Ave. looking North. (below) (05/15/2014)



2 - Intersection of 15th and Lenox Ave looking South East at site (below) (05/15/2014)



3. Intersection of 15th St. and Lenox Ave. looking West. (above) (05/15/2014)





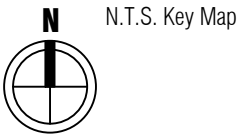
4. 15th St. looking South at site (Below) (05/15/2014)



5. Intersection of 15th St. and Michigan looking South. (below) (05/15/2014)



6. Intersection of 15th St. and Michigan looking West. (below) (05/15/2014)





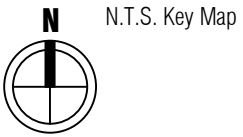
7. 15th St. looking South at site (Below) (05/15/2014)



8. Michigan looking West at site. (below) (05/15/2014)



9. Michigan looking East. (below) (05/15/2014)





10. Intersection of 15th and Michigan looking NE (Below) (05/15/2014)



11. Intersection of 15th and Lenox looking South. (below) (05/15/2014)



12. Intersection of 15th and Lenox looking North. (below) (05/15/2014)



**1030 15th Street, Miami Beach, Florida**

City of Miami Beach - Development Application

Context Photos (4)

03/21/2016

No copies, transmissions, reproductions, or electronic revisions of any portions of these drawings in whole or in part be made without the express written permission of Zyscovich Architects. All designs indicated in these drawings are property of Zyscovich Architects. All copyrights reserved © 2016.

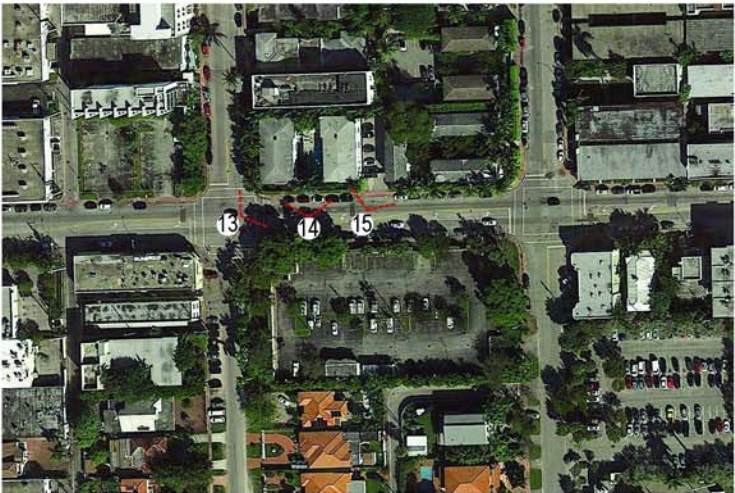
**ZYSCOVICH**  
ARCHITECTS

100 N Biscayne Blvd., 27th Fl  
Miami, FL 33132-2304  
t 305.372.5222 f 305.577.4521

e info@zyscovich.com  
w www.zyscovich.com



13. Context across from site on 15th Street (below) (05/15/2014)



14. Context across from site on 15th Street (below) (05/15/2014)



15. Context across from site on 15th Street (below) (05/15/2014)

