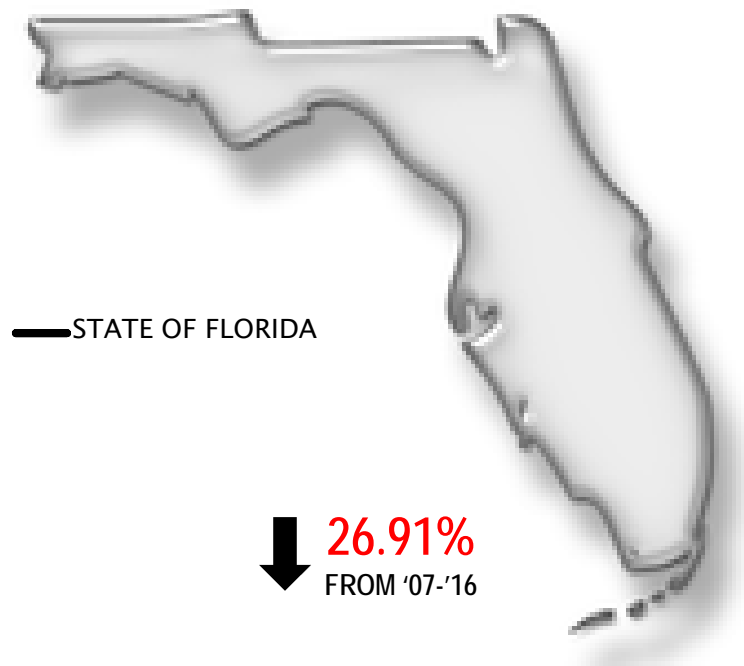
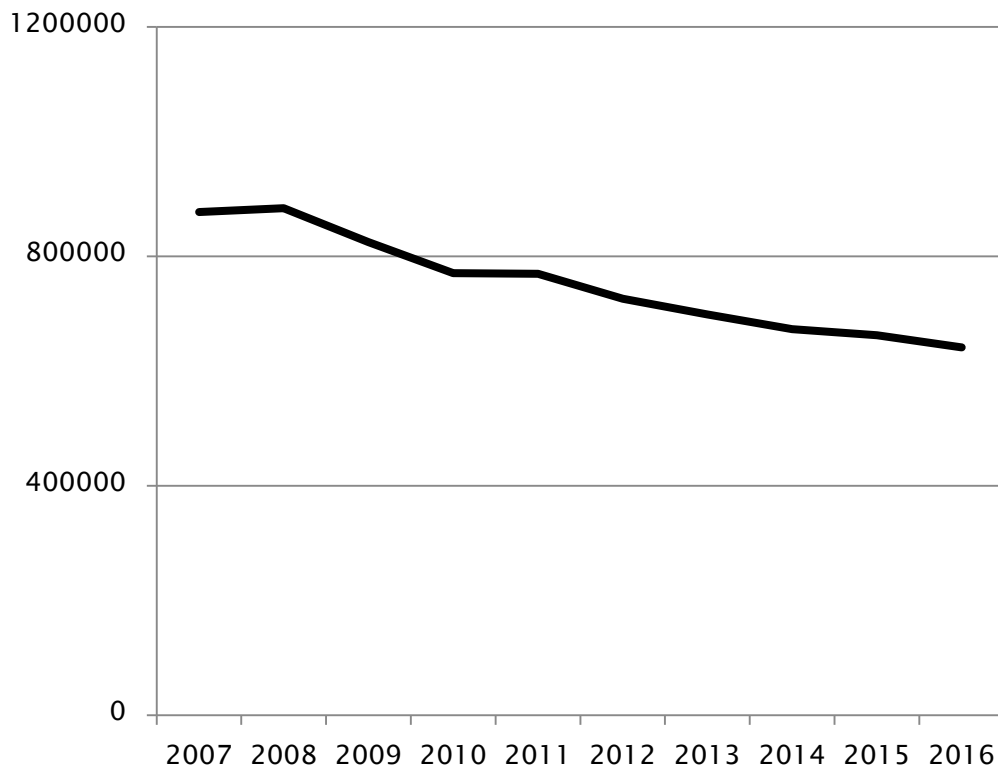




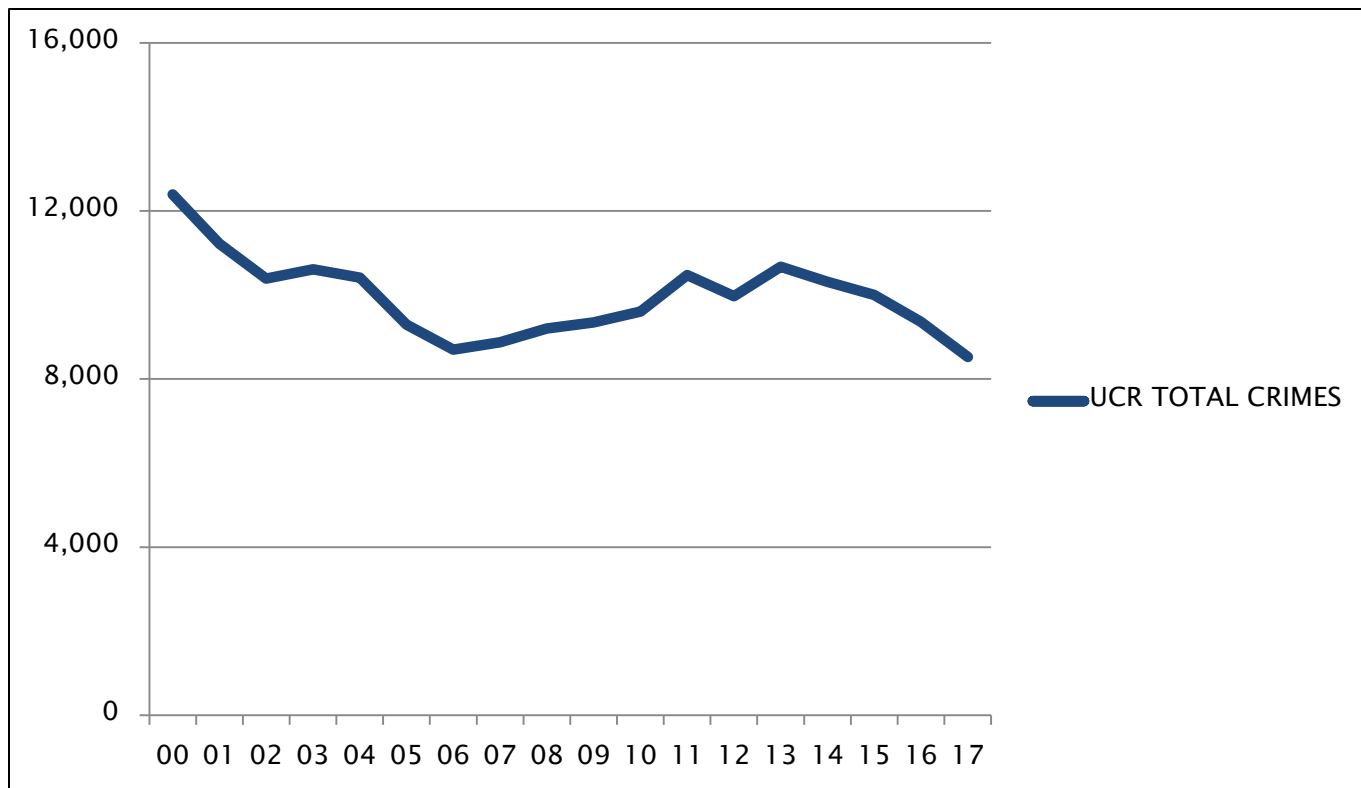
STATE OF FLORIDA – TOTAL UCR



YEAR	2007	2008	2009	2010	2011	2012	2013	2014	2015	2016
TOTAL	876981	883905	824559	770518	769480	725944	698607	673138	662372	641014



2000 – 2017 MIAMI BEACH UCR PART I CRIME STATISTICS

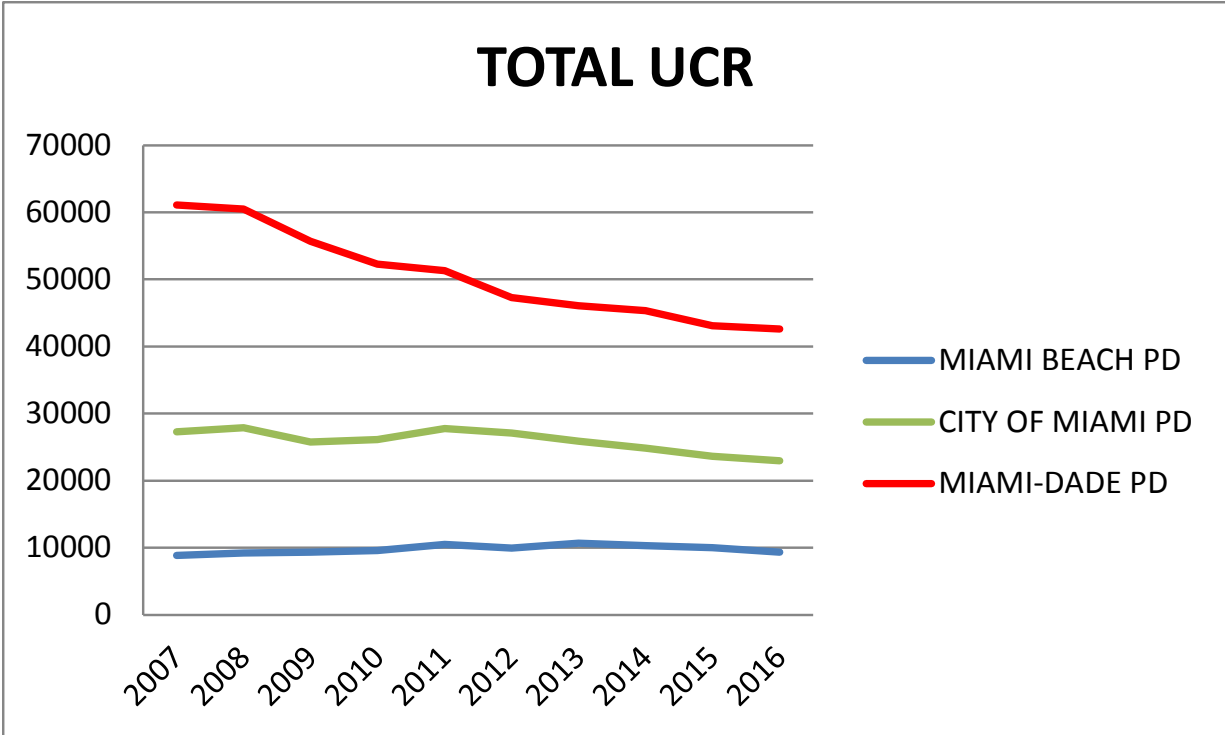


YEAR	UCR TOTAL CRIMES
2000	12,393
2001	11,217
2002	10,390
2003	10,610
2004	10,411
2005	9,294
2006	8,697
2007	8,877
2008	9,205
2009	9,345
2010	9,607
2011	10,472
2012	9,969
2013	10,670
2014	10,316
2015	10,000
2016	9,359
2017	8,524

TOTAL UCR PART I CRIME DECREASED BY 31% FROM 2000 TO 2017



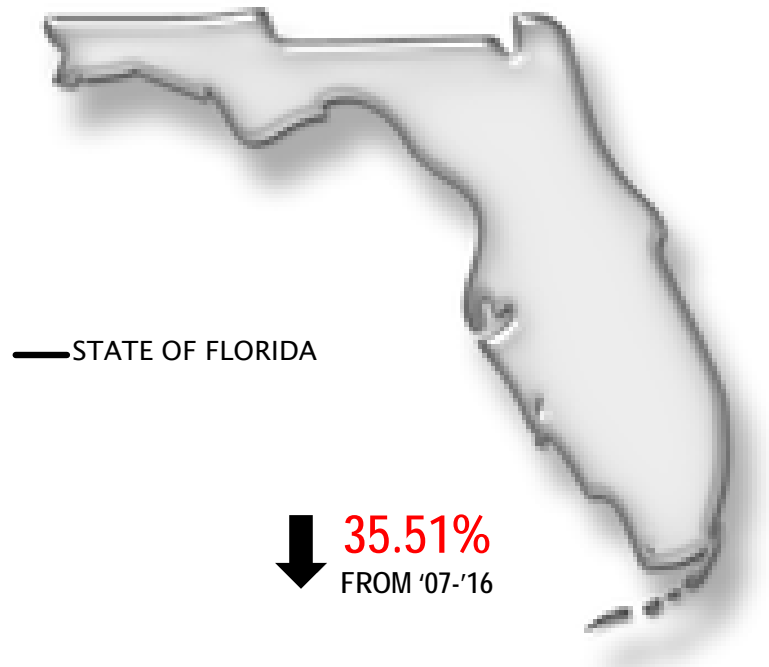
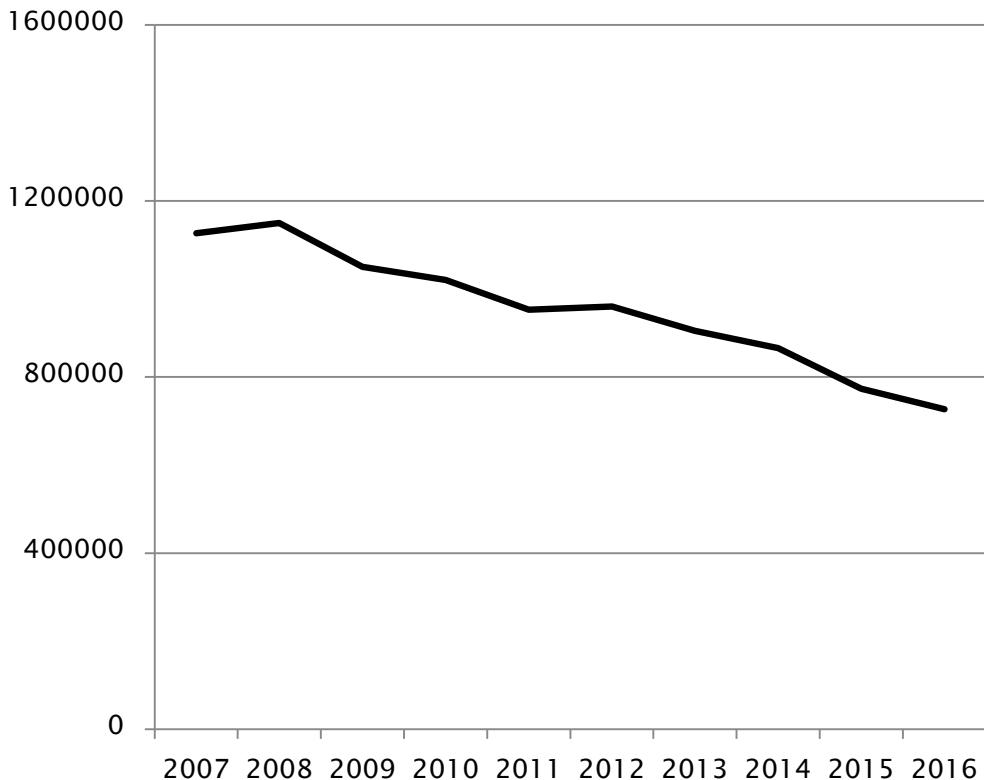
2007 - 2016 MDPD, MPD, AND MBPD UCR PART I CRIMES COMPARISON



NOTE: IN 2017, MBPD RECORDED ITS LOWEST UCR PART I CRIME TOTAL SINCE 2000 (8,524). OFFICIAL UCR TOTALS FOR MDPD AND MPD HAVE NOT BEEN PUBLISHED. **MBPD'S CRIME REDUCTION FROM 2007 – 2017 WAS 3.98%.**



STATE OF FLORIDA – TOTAL ARRESTS

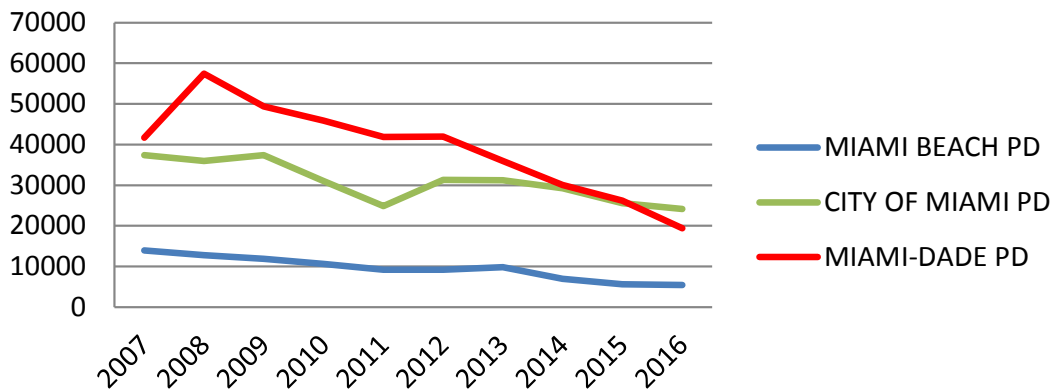


YEAR	2007	2008	2009	2010	2011	2012	2013	2014	2015	2016
TOTAL	1126524	1149933	1049929	1020497	952674	960192	904634	865392	773037	726494



2007 - 2016 MDPD, MPD, AND MBPD TOTAL ARREST COMPARISON

TOTAL ARRESTS



NOTE: IN 2008, MBPD MADE APPROXIMATELY **135% MORE** ARRESTS THAN IN 2016, HOWEVER UCR PART I CRIME IN 2008 ROSE 3.70% FROM THE PREVIOUS YEAR. UCR PART I CRIME IN 2016 DECREASED 6.41% FROM THE PREVIOUS YEAR.



MIAMI-DADE	
YEAR	COUNT
2007	41680
2008	57466
2009	49350
2010	45866
2011	41822
2012	41964
2013	35934
2014	30088
2015	26230
2016	19420
2017	N/A

-53.41%
FROM '07-'16

CITY OF MIAMI	
YEAR	COUNT
2007	37373
2008	35952
2009	37362
2010	31063
2011	24819
2012	31327
2013	31210
2014	29208
2015	25618
2016	24100
2017	N/A

-35.51%
FROM '07-'16

MIAMI BEACH	
YEAR	COUNT
2007	13935
2008	12740
2009	11917
2010	10643
2011	9221
2012	9241
2013	9793
2014	6999
2015	5639
2016	5431
2017	*5790

-61.03%
FROM '07-'16

*MBPD TOTAL ARRESTS FROM 2007 -2017 DECREASED BY 58.45%



2007 - 2017 MDPD, MPD, AND MBPD DUI ARREST COMPARISON

Year	Miami Beach PD	Miami PD	Miami-Dade PD
2007	872	561	N/A
2008	1056	543	N/A
2009	1331	580	1306
2010	969	722	1290
2011	619	676	1343
2012	416	778	1430
2013	319	462	1322
2014	294	416	1434
2015	116	325	1576
2016	148	361	859
2017	183	365	594