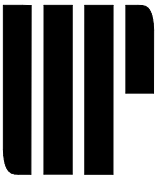


# 500ALTON

500 ALTON RD :: MIAMI BEACH, FL 33139

ARCHITECT:



420 LINCOLN ROAD S.600 | MIAMI BEACH, FL 33139  
T.786.246.4857 | INFO@URBANROBOT.NET  
HTTP://WWW.URBANROBOTASSOCIATES.COM  
URBAN ROBOT ASSOCIATES

## 500 ALTON PARKING LOT FINAL SUBMITTAL

### APPLICABLE CODE :

FLORIDA BUILDING CODE 2014  
FLORIDA FIRE PREVENTION CODE 2014

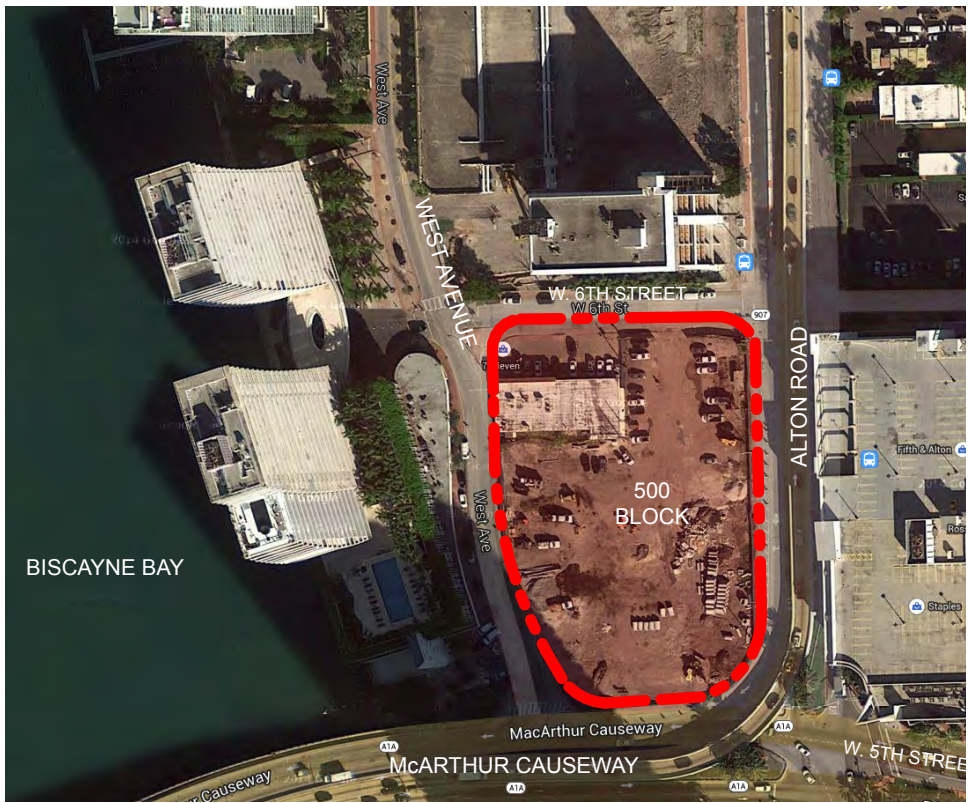
### SCOPE OF WORK :

NEW CONSTRUCTION OF TEMPORARY OFF-STREET PARKING LOT  
INCLUDING PAVING, DRAINAGE, LANDSCAPING AND LIGHTING.

### DRAWING INDEX:

G000	COVER SHEET
-----	500 ALTON SURVEY
G100	GENERAL NOTES AND ZONING
G101	SITE PHOTOS AND LOCATION
G102	SITE PHOTOS AND LOCATION
G200	500 ALTON PARKING SITE PLAN
L100	PLANTING PLAN
L101	VARIANCE DIAGRAM
L200	COMPLIANT PLAN

### LOCATION MAP:

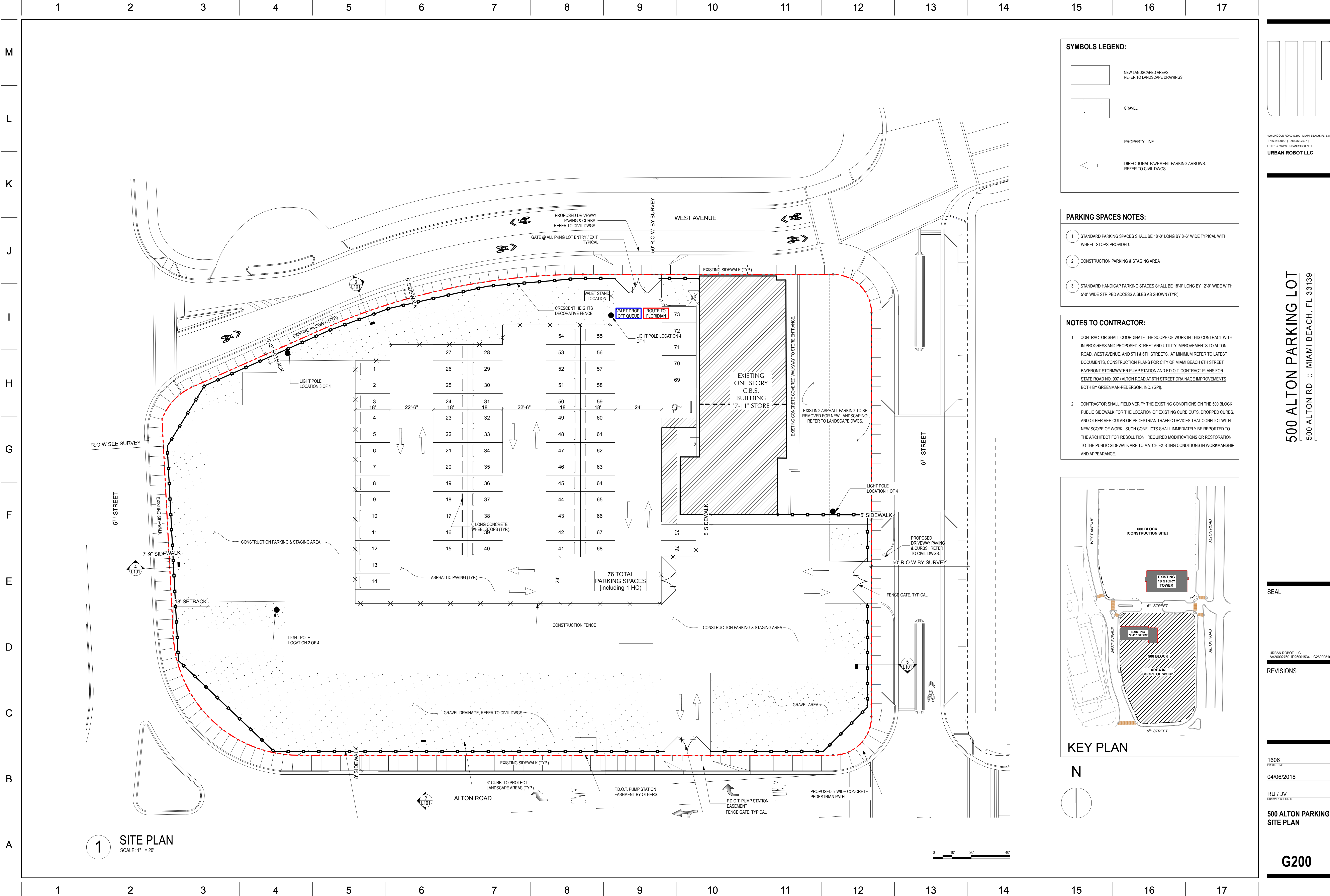


### REVISIONS

No.	DESCRIPTION	DATE

SUBMITTAL: PLANNING BOARD

DATE: APRIL 6, 2018



1 SITE PLAN  
SCALE: 1" = 20'

**SYMBOLS LEGEND:**

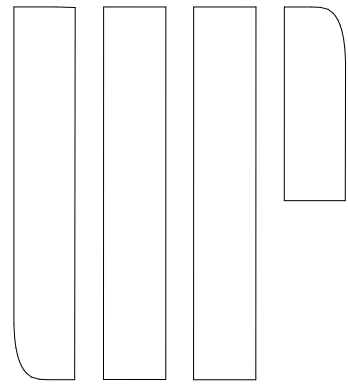
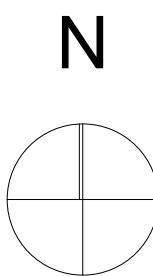
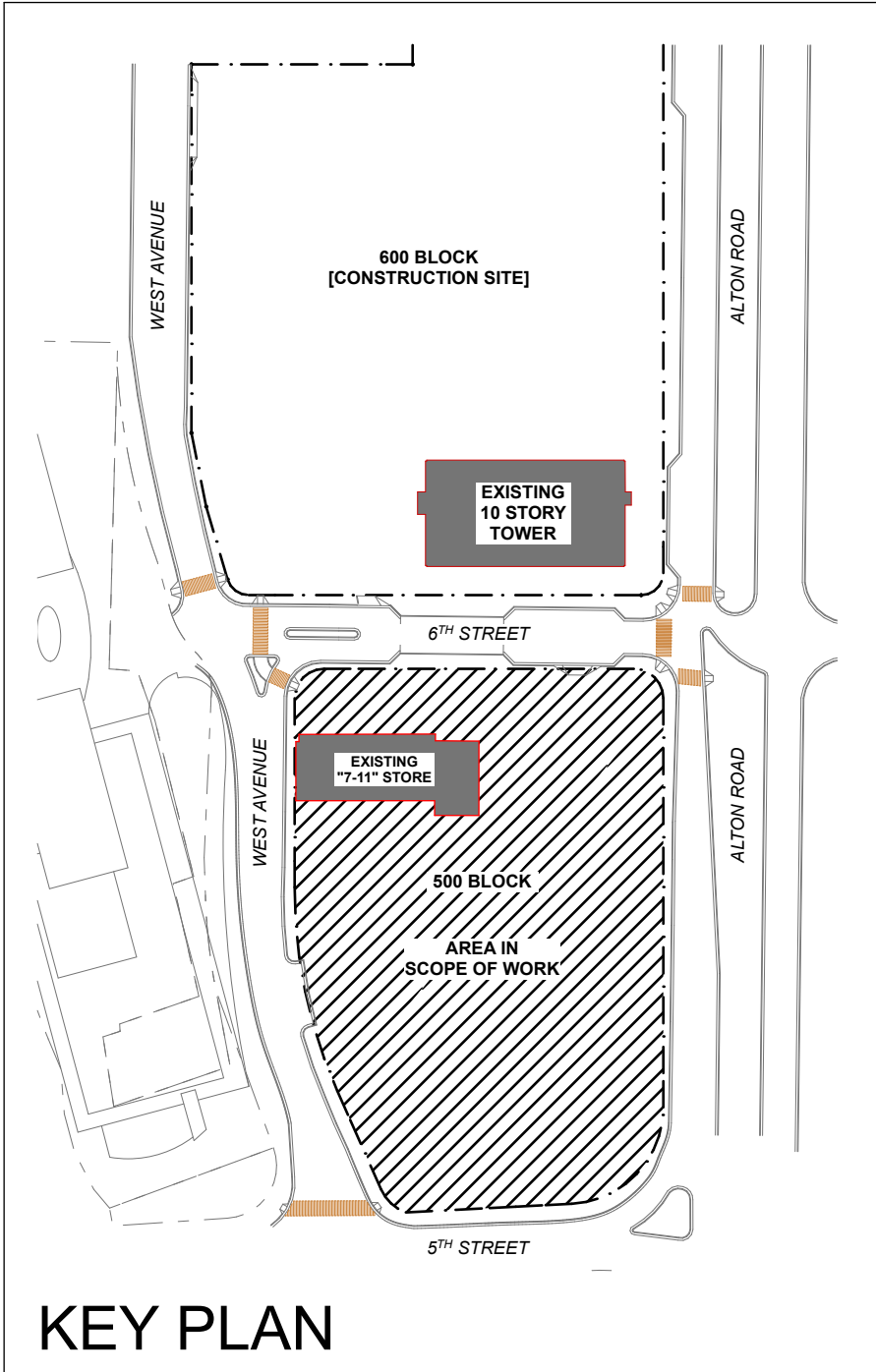
- NEW LANDSCAPED AREAS. REFER TO LANDSCAPE DRAWINGS.
- GRAVEL
- PROPERTY LINE.
- DIRECTIONAL PAVEMENT PARKING ARROWS. REFER TO CIVIL DWGS.

**PARKING SPACES NOTES:**

- STANDARD PARKING SPACES SHALL BE 18'-0" LONG BY 8'-6" WIDE TYPICAL WITH WHEEL STOPS PROVIDED.
- CONSTRUCTION PARKING & STAGING AREA
- STANDARD HANDICAP PARKING SPACES SHALL BE 18'-0" LONG BY 12'-0" WIDE WITH 5'-0" WIDE STRIPED ACCESS AISLES AS SHOWN (TYP.).

**NOTES TO CONTRACTOR:**

- CONTRACTOR SHALL COORDINATE THE SCOPE OF WORK IN THIS CONTRACT WITH IN PROGRESS AND PROPOSED STREET AND UTILITY IMPROVEMENTS TO ALTON ROAD, WEST AVENUE, AND 5TH & 6TH STREETS. AT MINIMUM REFER TO LATEST DOCUMENTS, CONSTRUCTION PLANS FOR CITY OF MIAMI BEACH 6TH STREET BAYFRONT STORMWATER PUMP STATION AND F.D.O.T. CONTRACT PLANS FOR STATE ROAD NO. 907 / ALTON ROAD AT 6TH STREET DRAINAGE IMPROVEMENTS BOTH BY GREENMAN-PEDERSON, INC. (GPI).
- CONTRACTOR SHALL FIELD VERIFY THE EXISTING CONDITIONS ON THE 500 BLOCK PUBLIC SIDEWALK FOR THE LOCATION OF EXISTING CURB CUTS, DROPPED CURBS, AND OTHER VEHICULAR OR PEDESTRIAN TRAFFIC DEVICES THAT CONFLICT WITH NEW SCOPE OF WORK. SUCH CONFLICTS SHALL IMMEDIATELY BE REPORTED TO THE ARCHITECT FOR RESOLUTION. REQUIRED MODIFICATIONS OR RESTORATION TO THE PUBLIC SIDEWALK ARE TO MATCH EXISTING CONDITIONS IN WORKMANSHIP AND APPEARANCE.



4205 LINCOLN ROAD S 6000 | MIAMI BEACH, FL 33139  
T: 786.246.4857 | F: 786.768.2537 |  
WWW.URBANROBOT.NET

URBAN ROBOT LLC

500 ALTON PARKING LOT  
500 ALTON RD :: MIAMI BEACH, FL 33139

SEAL

URBAN ROBOT LLC  
A-23002760, 020901534, LC28000510

REVISIONS

1606  
PROJECT NO.  
04/06/2018  
RU / JV  
DRAWN / CHECKED

500 ALTON PARKING  
SITE PLAN

G200