

NOT FOR CONSTRUCTION

revuelta
architecture
international

Miami

Santiago, Chile

revuelta-
architecture.com

2950 SW 27TH AVE.
SUITE 110
MIAMI, FL 33135
T: 305.550.5000
F: 305.550.5040

Project

72+ COLLINS HOTEL

7140 COLLINS AVENUE
MIAMI BEACH - FLORIDA 33141

Permit Revisions

Owner Information

RETI

9537 Harding Avenue
Surfside, Florida 33154

(305) 867-6344

Consultant

Design by

Luis O. Revuelta
AR-0007972

ZONING
PRESENTATION

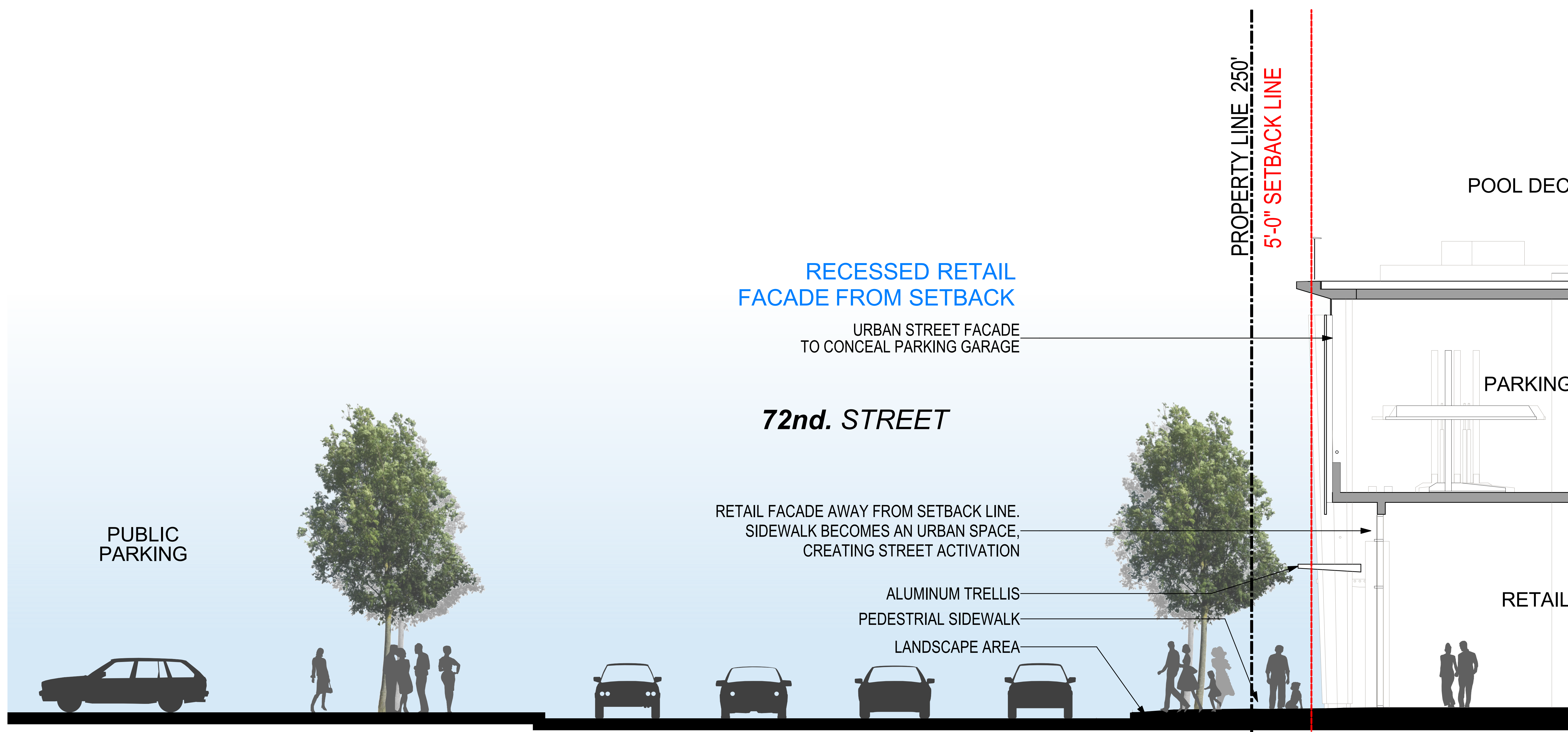
Date
03.23.2018

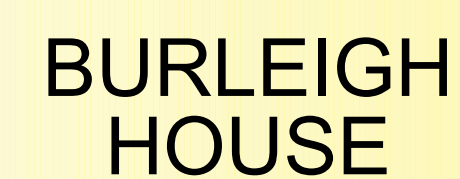
Scale
AS SHOWN

Project No.
1729

Sheet Name
72nd ST. - ADDITIONAL
RECESSED

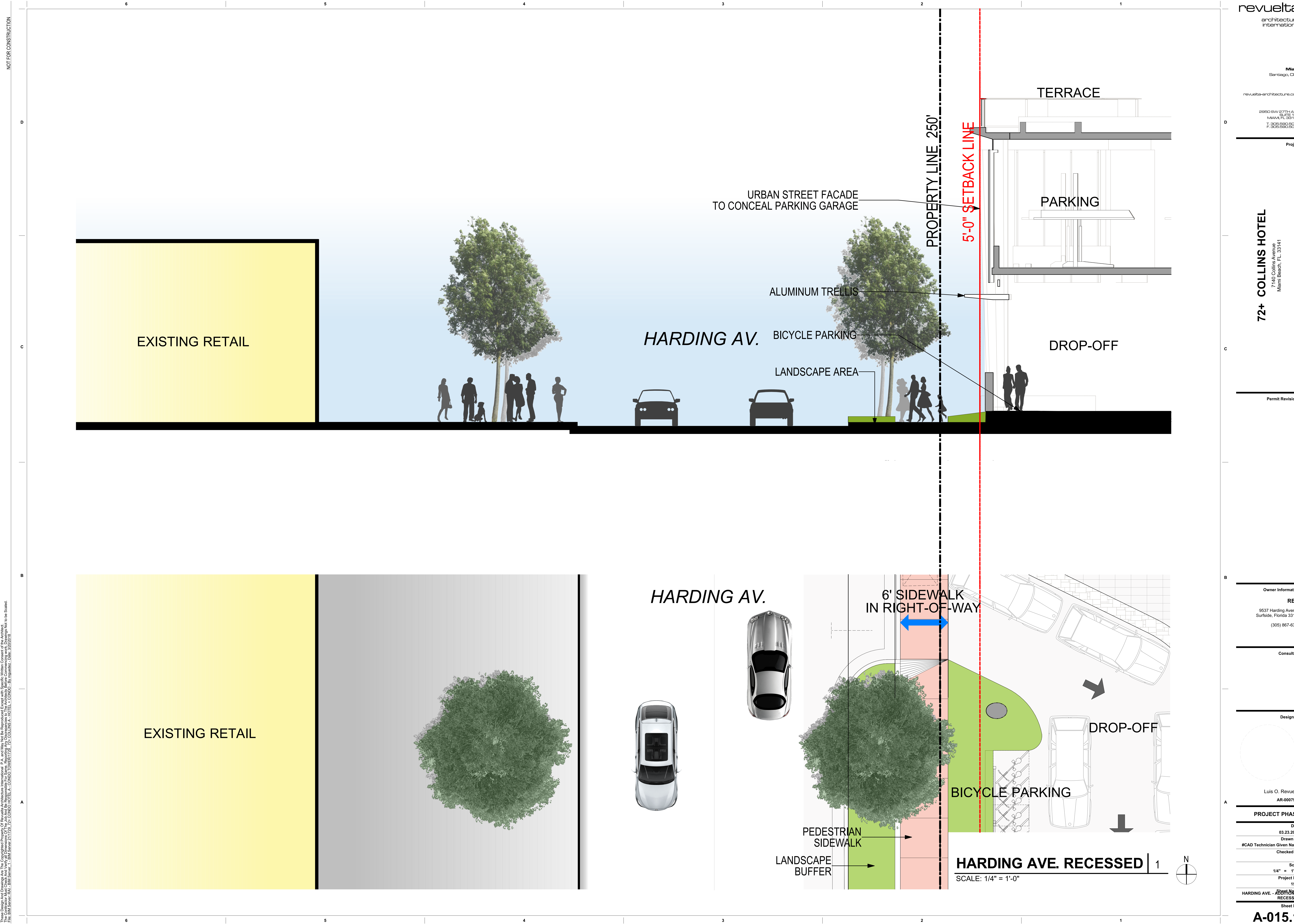
Sheet No.
A-014

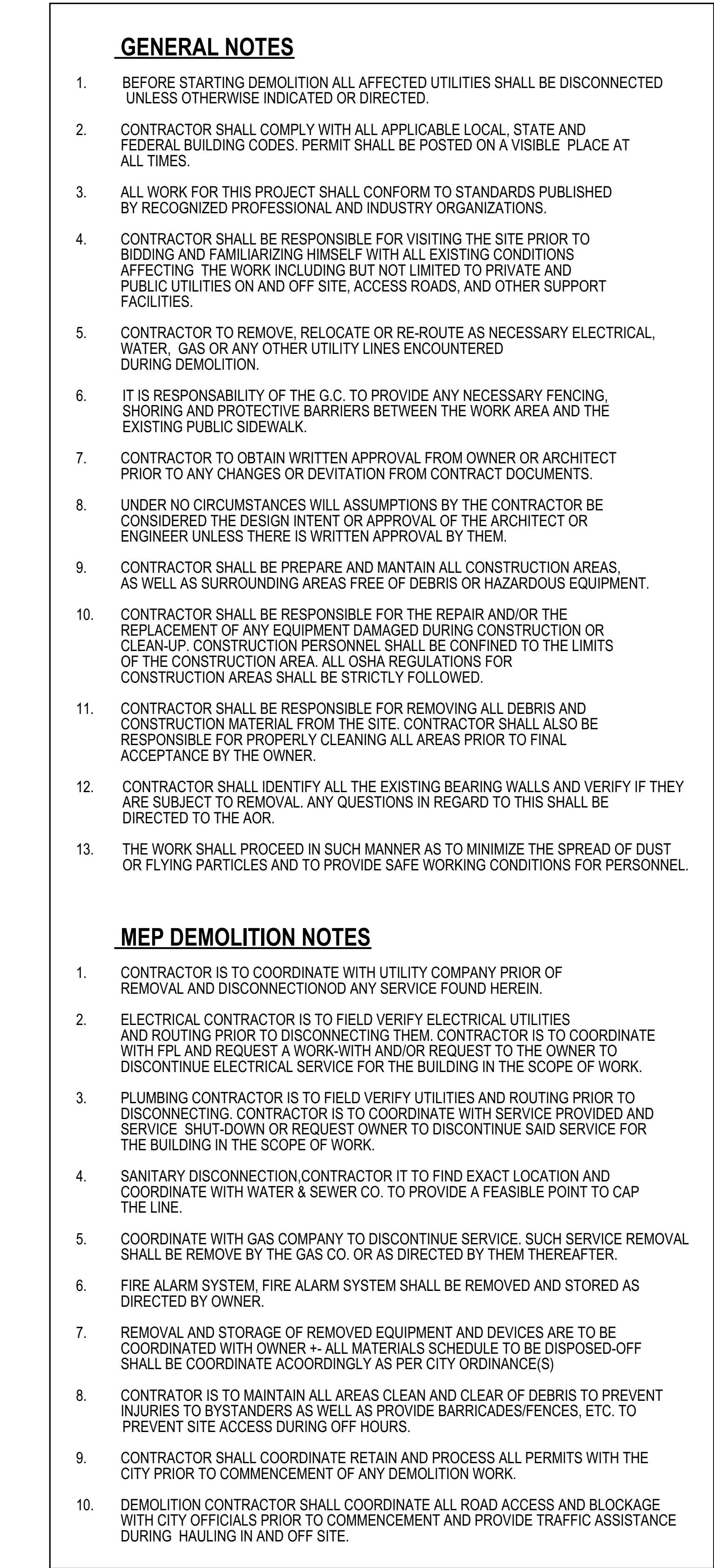




NOT FOR CONSTRUCTION

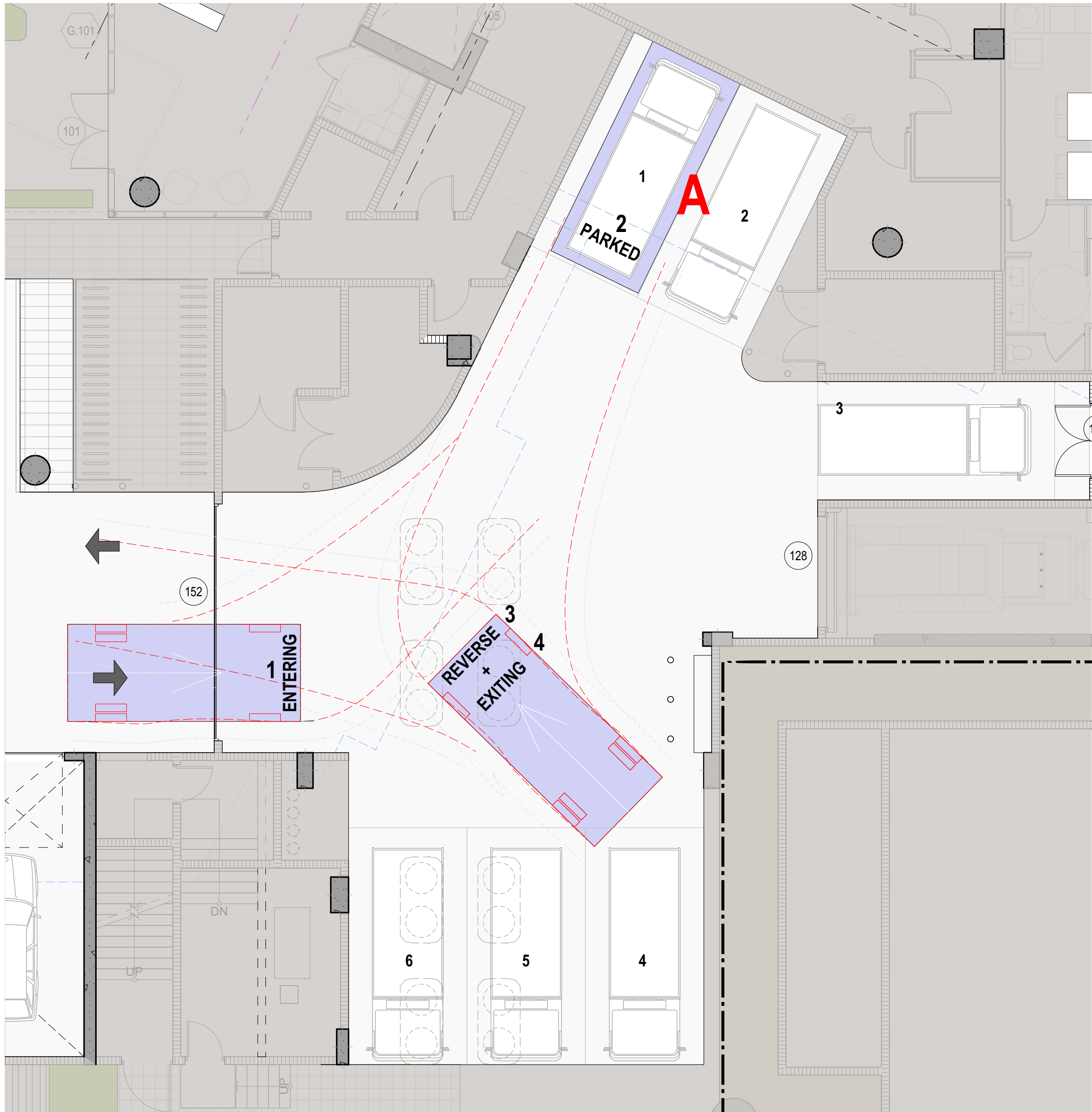
These Plans are prepared by Revuelta Architecture International, P.A., and are the property of Revuelta Architecture International, P.A. and are not to be reproduced, stored in a retrieval system, or transmitted in any form or by any means, electronic, mechanical, photocopying, recording, or by any information storage and retrieval system, without the prior written permission of Revuelta Architecture International, P.A. The Plans are prepared for the project described herein and are not to be used for any other project without the prior written permission of Revuelta Architecture International, P.A. The Plans are prepared for the project described herein and are not to be used for any other project without the prior written permission of Revuelta Architecture International, P.A. The Plans are prepared for the project described herein and are not to be used for any other project without the prior written permission of Revuelta Architecture International, P.A.



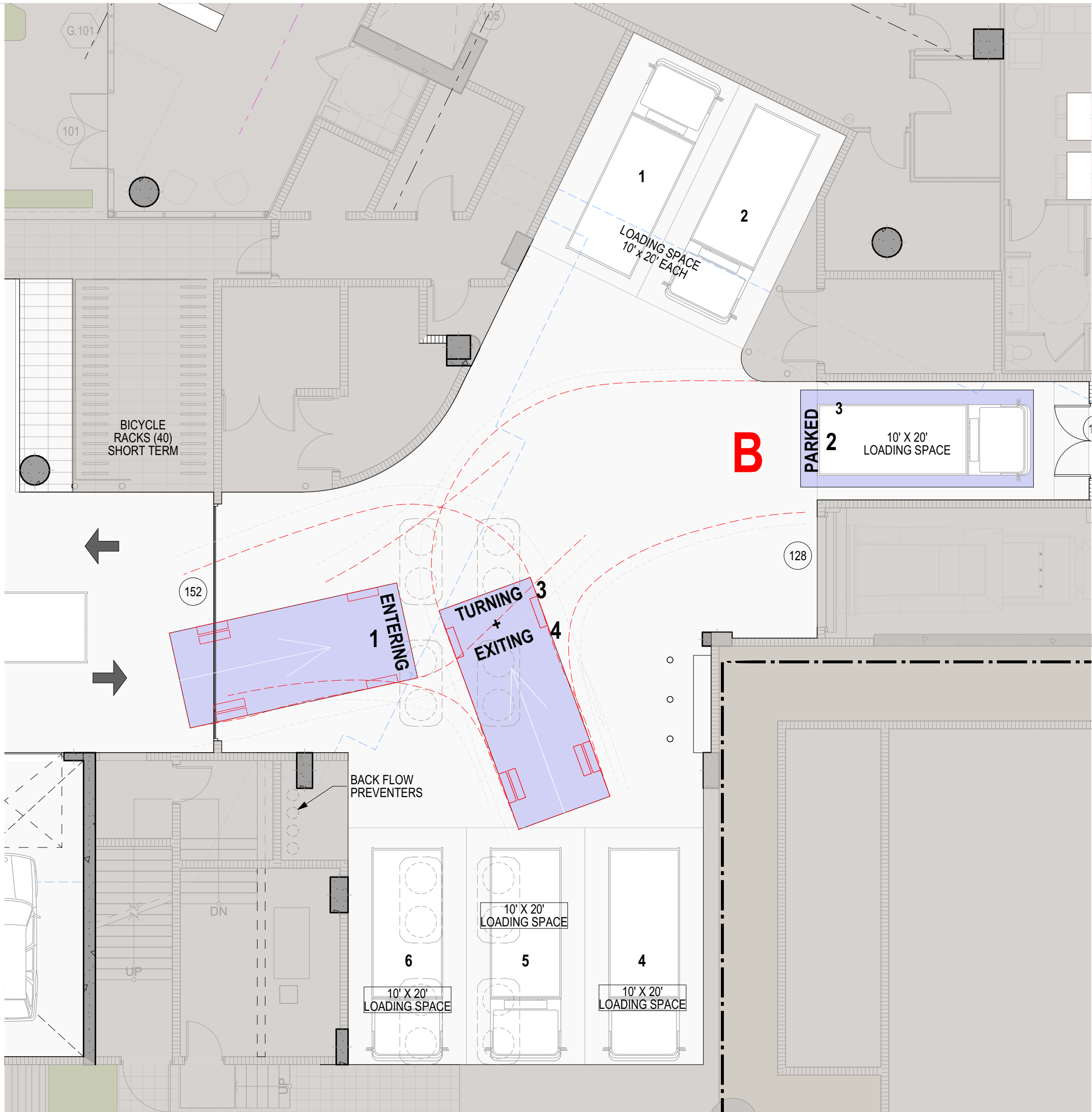


SCALE 1/64"=1'-0"

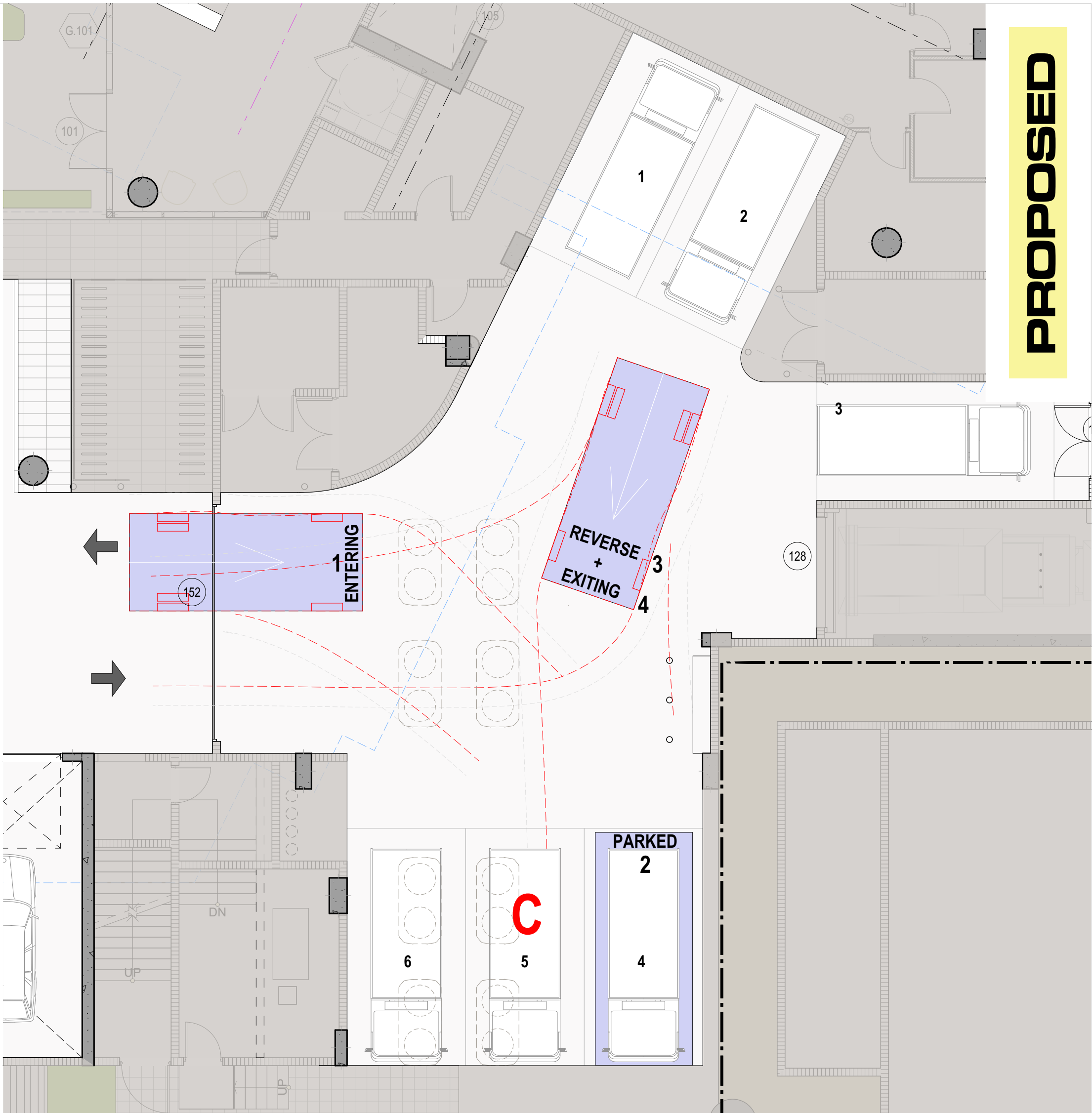




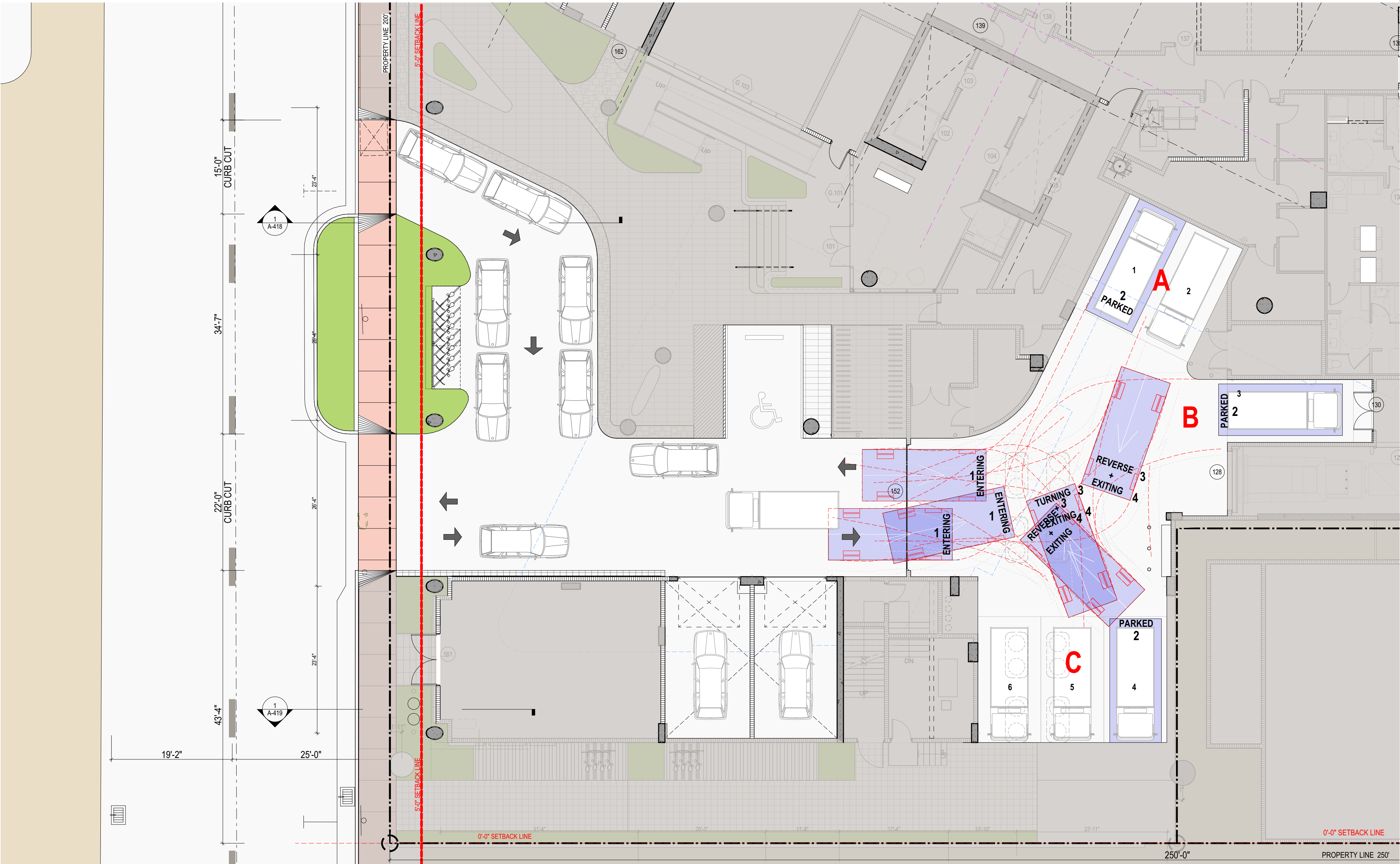
LOADING A
SCALE 1/8"=1'-0"



LOADING B
SCALE 1/8"=1'-0"



LOADING C
SCALE 1/8"=1'-0"



ENTRANCE/ EXIT LOADING DOCKS

