

ORIGINAL DESIGN SUBMITTED FOR REVIEW



NIELSEN
landscape architects

1016 clare avenue, 5
west palm beach, fl
561.402.9414

www.nielsenlandarch.com

RETI
9537 HARDING AVENUE
SURFSIDE, FL 33154
305.987.6344

WWW.RETIMIAMI.COM

REVUELTA INTERNATIONAL
2950 SW 27TH STREET, 110
MIAMI, FL 33133
305.590.5000

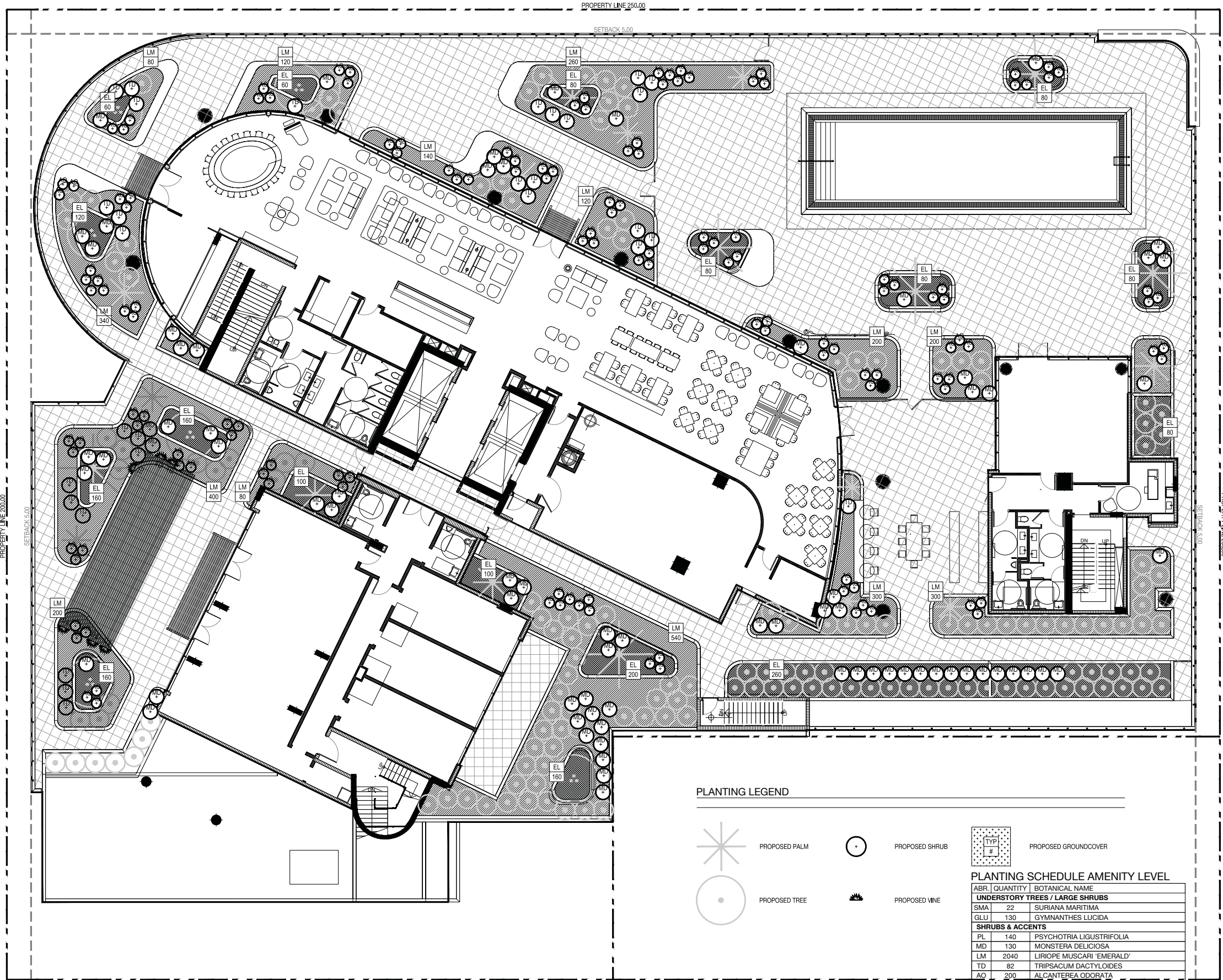
WWW.REVUELTA-ARCHITECTURE.COM

CLARO DEVELOPMENT
1035 N MIAMI AVENUE, 201
MIAMI, FL 33136
305.324.4700


WWW.CLAROCORP.COM

OCEAN ENGINEERING, INC.
333 NE 24TH STREET, 408
MIAMI, FL 33137
786.253.9252


WWW.OCEANENGINEERINGINC.COM




PLANTING LEGEND




PROPOSED PALM




PROPOSED SHRUB



PROPOSED TREE



PROPOSED VINE




PROPOSED GROUNDCOVER

PLANTING SCHEDULE AMENITY LEVEL

ABR	QUANTITY	BOTANICAL NAME
UNDERSTORY TREES / LARGE SHRUBS		
SMA	22	SURIANA MARITIMA
GLU	130	GYMNANTHES LUCIDA
SHRUBS & ACCENTS		
PL	140	PSYCHOTRIA LIGUSTRIFOLIA
MD	130	MONSTERA DELICIOSA
LM	2040	LIRIOPE MUSCARI 'EMERALD'
TD	82	TRIPSACUM DACTYLOIDES
AQ	200	ALCANTERA ODORATA
GROUNDCOVERS		
EL	1220	ERNODEA LITTORALIS
VINES, WATER PLANTS, MISCELLANEOUS		
TB	9	THUNBERGIA GRANDIFLORA

7140 COLLINS HOTEL

S. TYLER NIELSEN - LA6667067




03.23.2018


UNDERSTORY PLANTING PLAN

DATE

10.17.2016	PLANNING BOARD
10.28.2016	M. BEACH DRB
11.02.2016	M. BEACH REVIEW
11.27.2016	50% SCHEMATIC
12.21.2016	100% SCHEMATIC
06.22.2017	80% D. DEVELOPMENT
07.20.2017	100% D. DEVELOPMENT
09.01.2017	30% CD
12.21.2017	PERMIT DRAWINGS
03.23.2018	MB PLANNING FINAL



NORTH



0 4' 8'

L707

© COPYRIGHT NIELSEN LANDSCAPE ARCHITECTS, LLC

RETI
9537 HARDING AVENUE
SURFSIDE, FL 33154
305.867.6344

WWW.RETIMIAMI.COM

REVUELTA INTERNATIONAL
2950 SW 27TH STREET, 110
MIAMI, FL 33133
305.590.5000

WWW.REVUELTA-ARCHITECTURE.COM

CLARO DEVELOPMENT
1035 N MIAMI AVENUE, 201
MIAMI, FL 33136
305.324.4700

WWW.CLAROCORP.COM

OCEAN ENGINEERING, INC.
333 NE 24TH STREET, 408
MIAMI, FL 33137
786.253.5252

WWW.OCEANENGINEERINGINC.COM

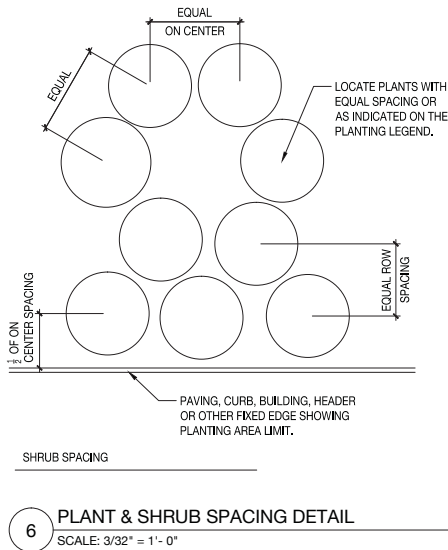
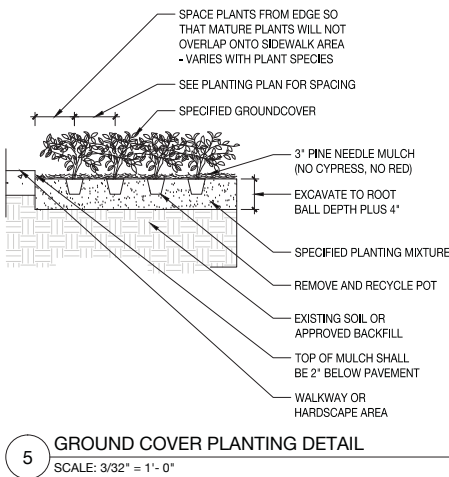
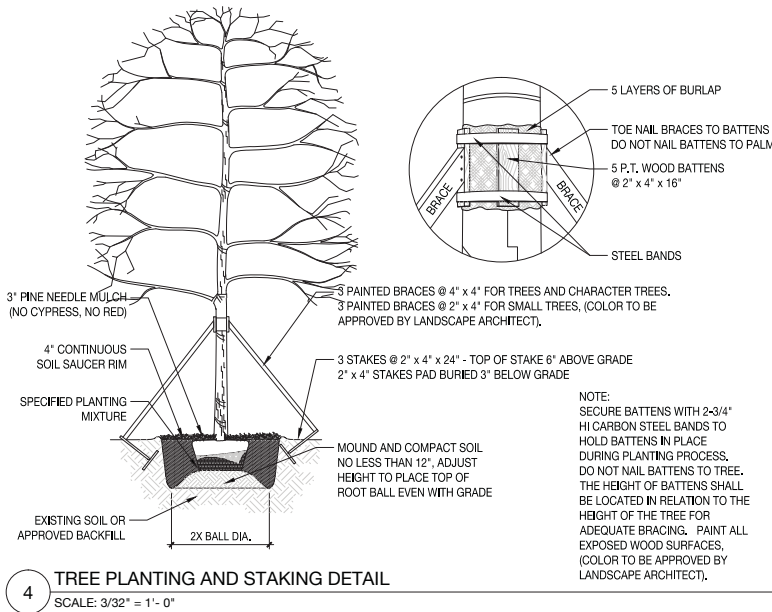
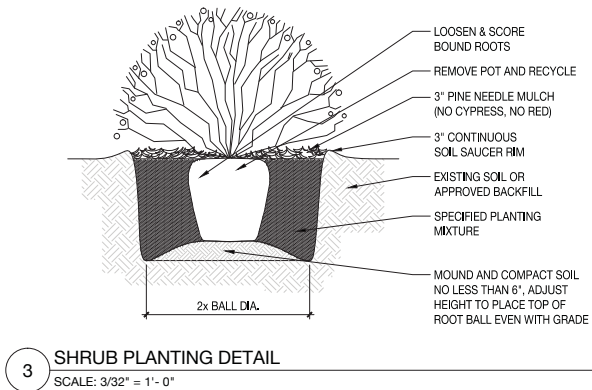
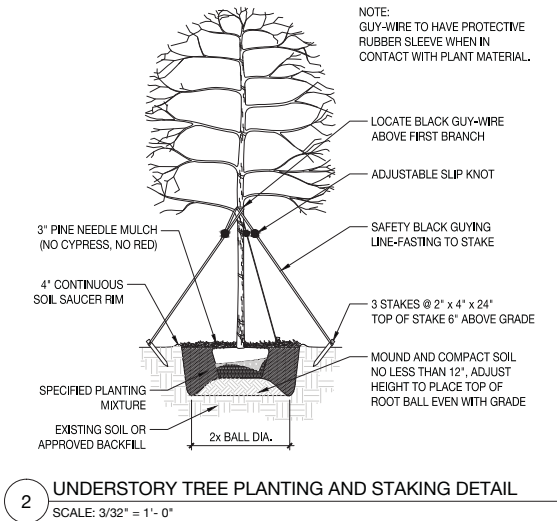
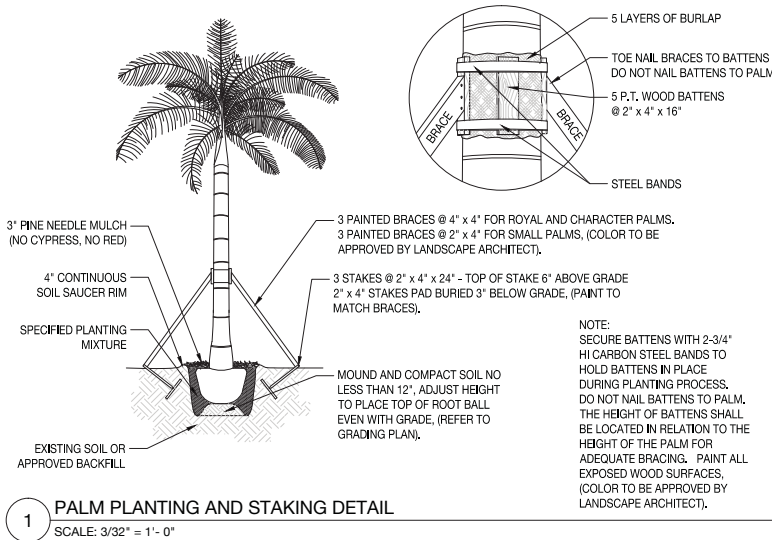
7140 COLLINS HOTEL
7140 COLLINS AVENUE | MIAMI BEACH, FLORIDA 33141

S. TYLER NIELSEN - LA6667067



DATE	
10.10.17.2016	PLANNING BOARD
10.28.2016	M. BEACH DRB
11.02.2016	M. BEACH REVIEW
11.27.2016	50% SCHEMATIC
12.21.2016	100% SCHEMATIC
06.22.2017	80% D.DEVELOPMENT
37.20.2017	100% D.DEVELOPMENT
39.01.2017	30% CD
12.21.2017	PERMIT DRAWINGS
33.23.2018	MB PLANNING FINAL





TRIANGULAR PLANT SPACING CHART FOR GROUNDCOVERS AND PERENNIALS

ROW	"D"	A
18" O.C.	15" O.C.	
24" O.C.	21" O.C.	
36" O.C.	31" O.C.	

7140 COLLINS HOTEL
7140 COLLINS AVENUE | MIAMI BEACH, FLORIDA 33141

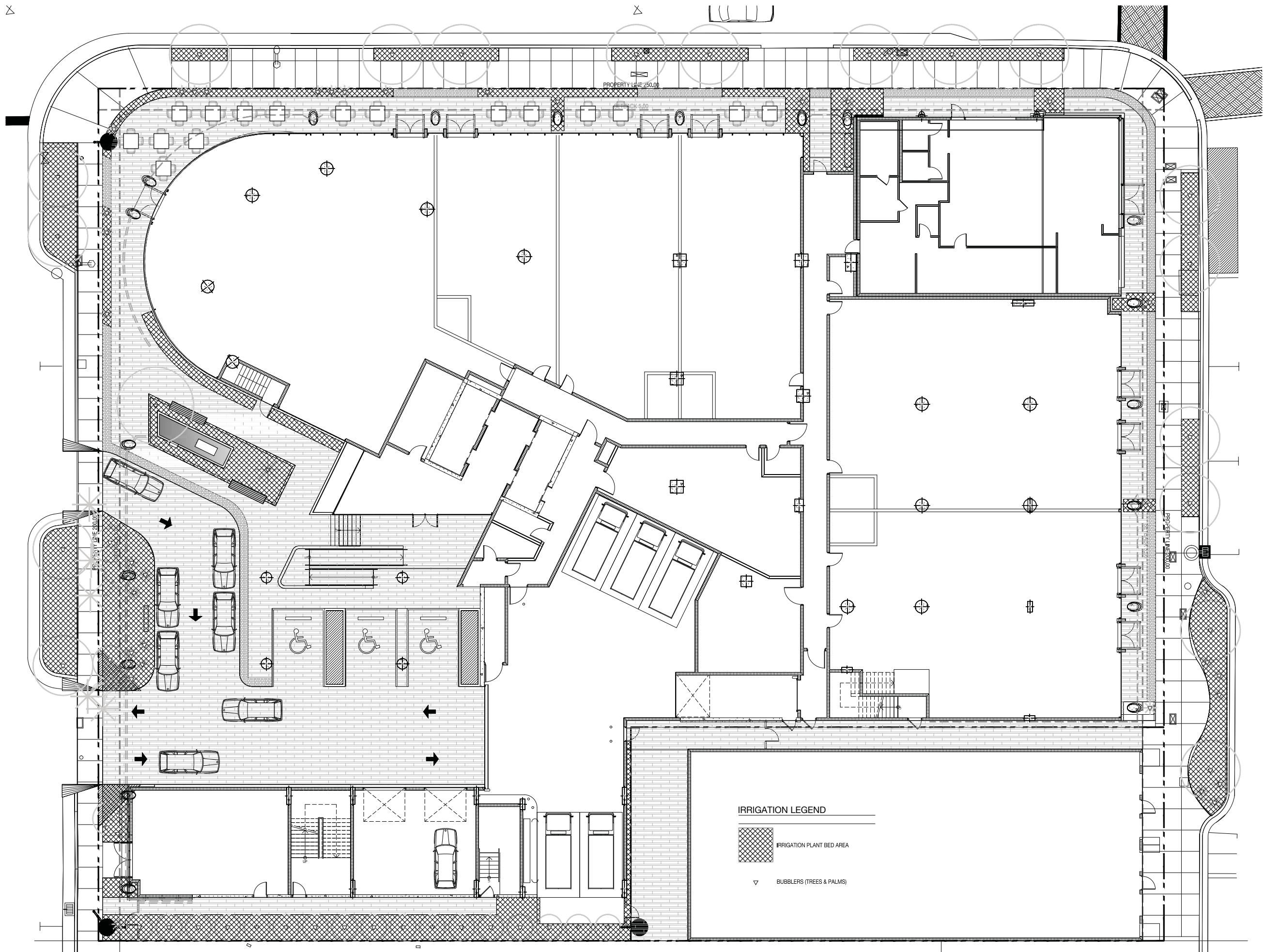
S. TYLER NIELSEN - LA6667067



GENERAL PLANTING DETAILS

DATE	PLANNING BOARD
10.17.2016	M. BEACH DRB
11.02.2016	M. BEACH REVIEW
11.27.2016	50% SCHEMATIC
12.21.2016	100% SCHEMATIC
06.22.2017	80% D DEVELOPMENT
07.20.2017	100% D DEVELOPMENT
09.01.2017	30% CD
12.21.2017	PERMIT DRAWINGS
03.23.2018	MB PLANNING FINAL

SCALE AS NOTED:



ORIGINAL DESIGN SUBMITTED FOR REVIEW

NIELSEN
landscape architects
1016 clare avenue, 5
west palm beach, fl
561.402.9414
www.nielsenlandarch.com

RETI
9537 HARDING AVENUE
SURFSIDE, FL 33154
305.867.6344
WWW.RETIMIAMI.COM

REVELTA INTERNATIONAL
2950 SW 27TH STREET,
110
MIAMI, FL 33133
305.590.5000
WWW.REVELTA-ARCHITECTURE.COM

CLARO DEVELOPMENT
1035 N MIAMI AVENUE,
201
MIAMI, FL 33136
305.324.4700
WWW.CLAROCORP.COM

OCEAN ENGINEERING, INC.
333 NE 24TH STREET,
408
MIAMI, FL 33137
786.253.5252
WWW.OCEANENGINEERING.COM

7140 COLLINS HOTEL
7140 COLLINS AVENUE | MIAMI BEACH, FLORIDA 33141

S. TYLER NIELSEN -
LA6667067
NOT FOR CONSTRUCTION

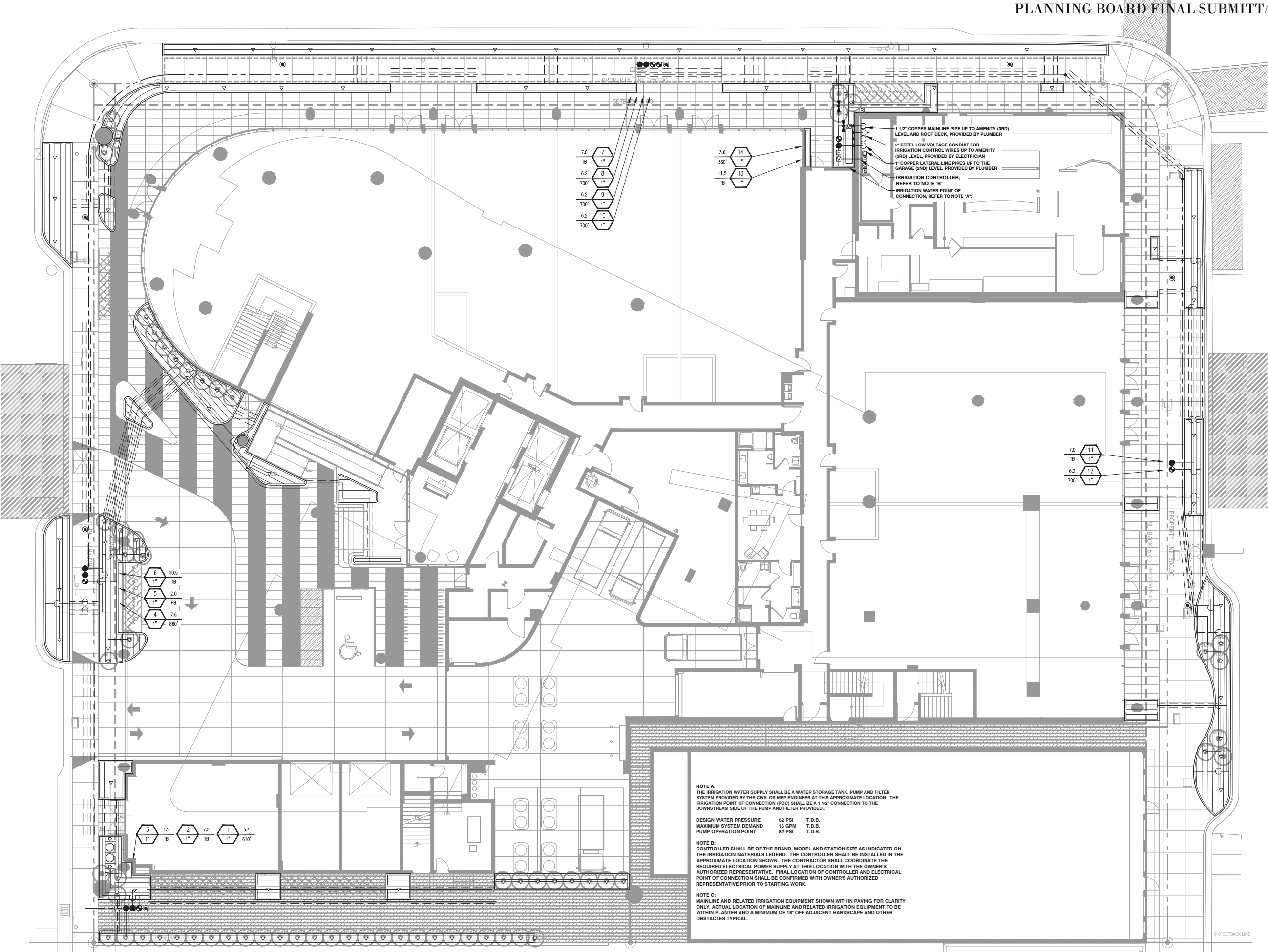


DATE	
10.17.2016	PLANNING BOARD
10.28.2016	M. BEACH DRB
11.02.2016	M. BEACH REVIEW
11.27.2016	50% SCHEMATIC
12.21.2016	100% SCHEMATIC
06.22.2017	80% D DEVELOPMENT
07.20.2017	100% D DEVELOPMENT
09.01.2017	30% CD
12.21.2017	PERMIT DRAWINGS
02.22.2018	COORDINATION



L801

sweeney + associates
IRRIGATION DESIGN AND CONSULTING
14510 SW 10th Street, Suite 200
Miami, FL 33186
Tel: 305.444.4444
www.sweeneyassociates.com





S. TYLER NIELSEN -
LA6667067

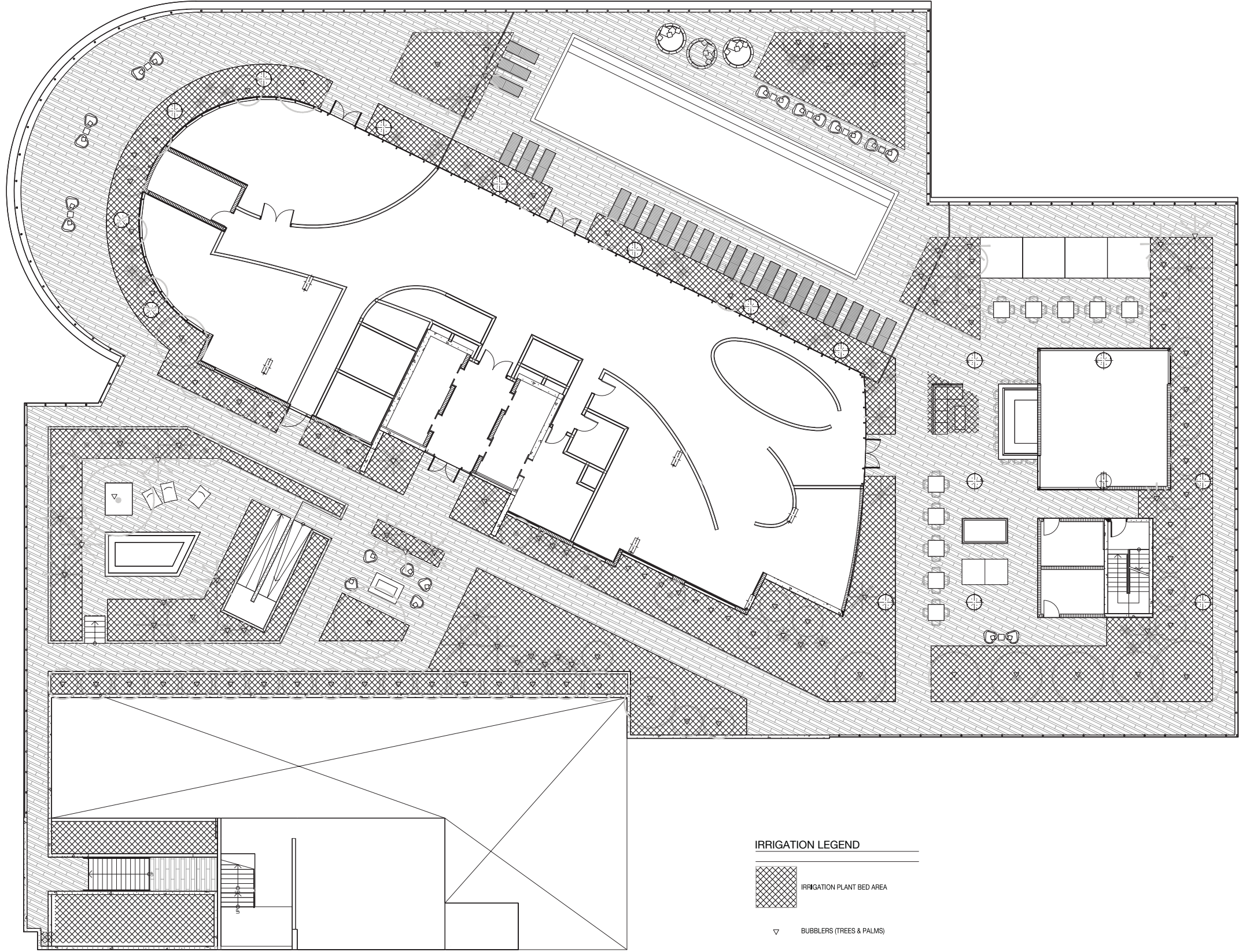


IRRIGATION PLAN-GARAGE

DATE	
10.17.2016	PLANNING BOARD
10.28.2016	M. BEACH DRB
11.02.2016	M. BEACH REVIEW
11.27.2016	50% SCHEMATIC
12.21.2016	100% SCHEMATIC
06.22.2017	80% D.DEVELOPMENT
07.20.2017	100% D.DEVELOPMENT
09.01.2017	30% CD
12.21.2017	PERMIT DRAWINGS
02.22.2018	COORDINATION



L802



ORIGINAL DESIGN SUBMITTED FOR REVIEW

S. TYLER NIELSEN -
LA6667067

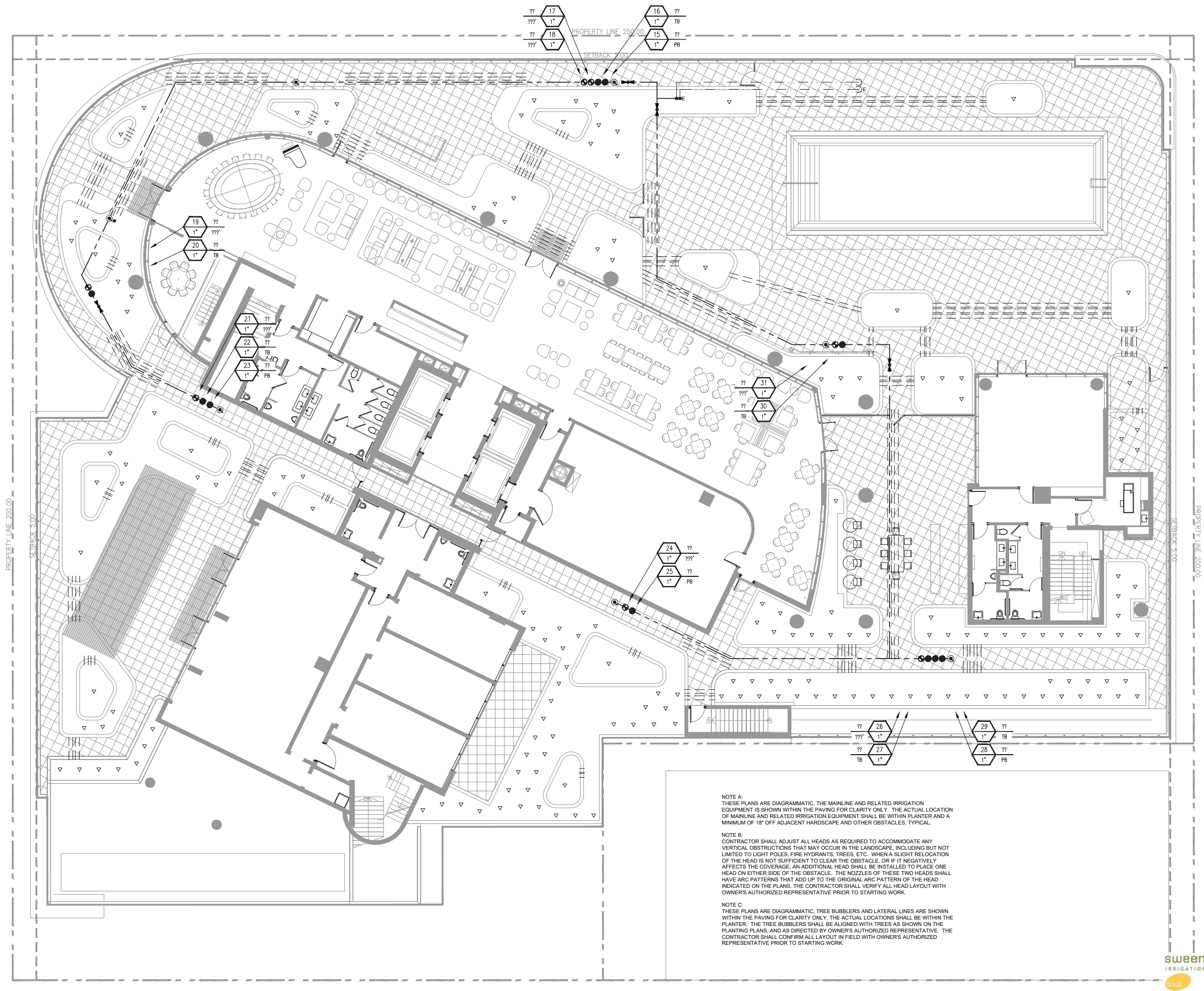


IRRIGATION PLAN—AMENITY

DATE	
10.17.2016	PLANNING BOARD
10.28.2016	M. BEACH DRB
11.02.2016	M. BEACH REVIEW
11.27.2016	50% SCHEMATIC
12.21.2016	100% SCHEMATIC
06.22.2017	80% D.DEVELOPMENT
07.20.2017	100% D.DEVELOPMENT
09.01.2017	30% CD
12.21.2017	PERMIT DRAWINGS
02.22.2018	COORDINATION



L803





NIELSEN
landscape architects

1016 clare avenue, 5
west palm beach, fl
561.402.9414

www.nielsenlandarch.com

RET
9537 HARDING AVENUE
SURFSIDE, FL 33154
305.867.6344

WWW.RETIMIAM.COM

REVUELTA INTERNATIONAL
2950 SW 27TH STREET,
110
MIAMI, FL 33133
305.590.5000

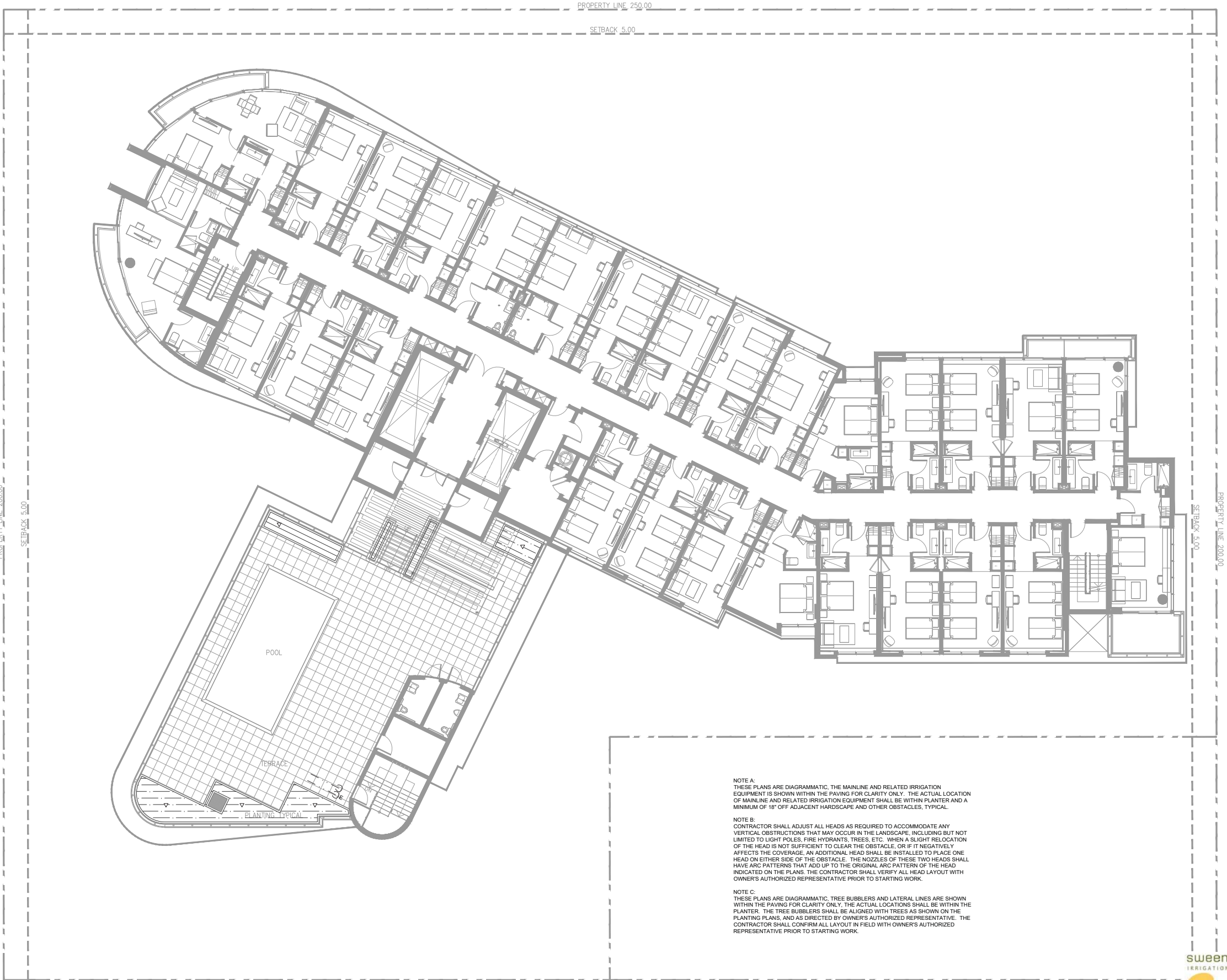
WWW.REVUELTA-ARCHITECTURE.COM

CLARO DEVELOPMENT
1035 N MIAMI AVENUE,
201
MIAMI, FL 33136
305.324.4700

WWW.CLAROGROUP.COM

OCEAN ENGINEERING, INC.
333 NE 24TH STREET,
408
MIAMI, FL 33137
786.253.5252

WWW.OCEANENGINEERING.COM



sweeney + associates

IRRIGATION DESIGN AND CONSULTING

28730 Via Canyon Drive, Suite C
Maricopa, AZ 85138

info@sweeneyassoc.com | (520) 465-0850
www.sweeneyassoc.com | (520) 465-0850

7140 COLLINS HOTEL

7140 COLLINS AVENUE | MIAMI BEACH, FLORIDA 33141

S. TYLER NIELSEN -
LA6667067



IRRIGATION PLAN-ROOF	
DATE	
10.17.2016	PLANNING BOARD
10.28.2016	M. BEACH DRB
11.02.2016	M. BEACH REVIEW
11.27.2016	50% SCHEMATIC
12.21.2016	100% SCHEMATIC
06.22.2017	80% D DEVELOPMENT
07.20.2017	100% D DEVELOPMENT
09.01.2017	30% CD
12.21.2017	PERMIT DRAWINGS
02.22.2018	COORDINATION



L804