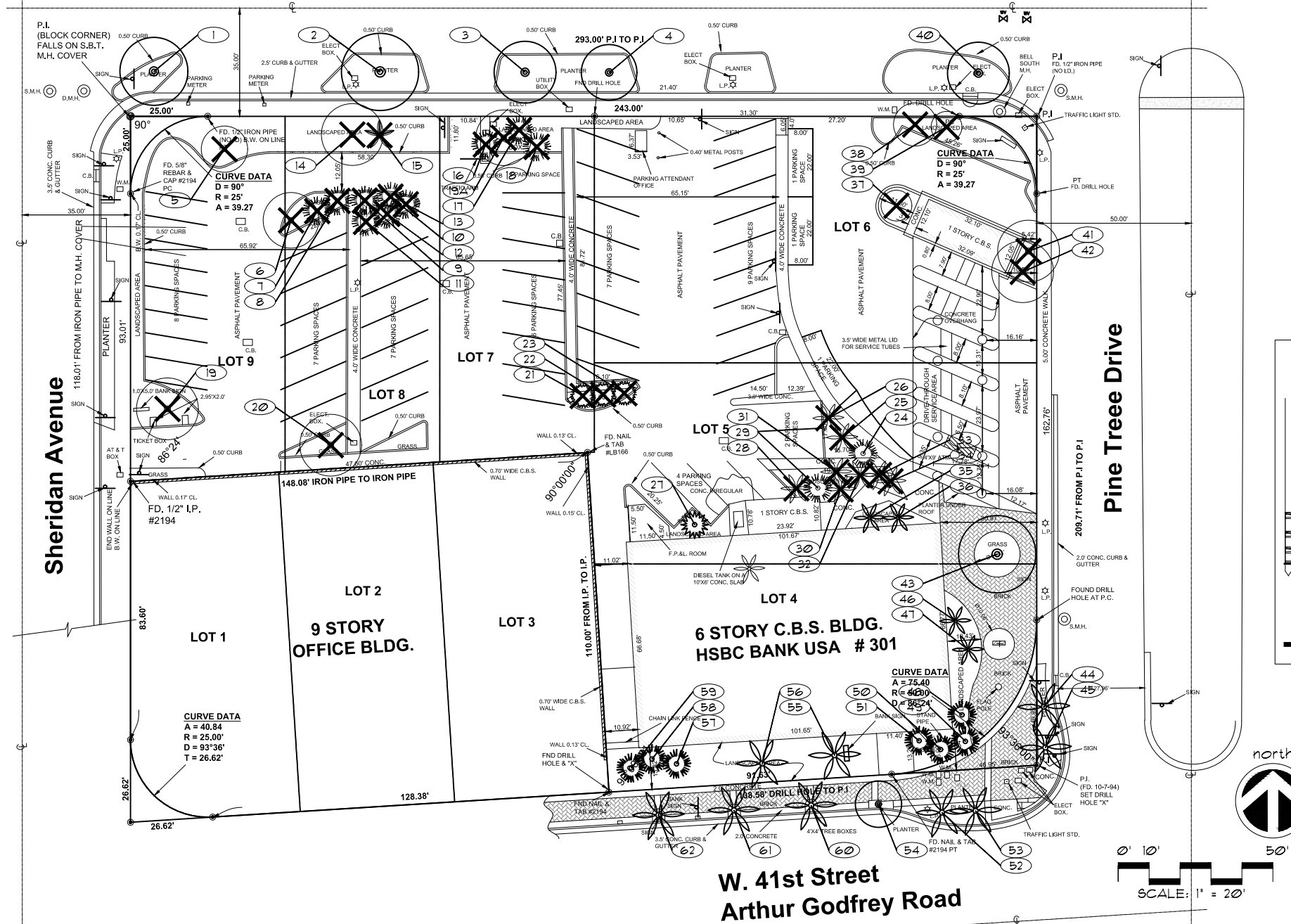


W. 42nd Street



APPROVED

MIAMI BEACH
MIAMI BEACH
340 WEST 42ND STREET MIAMI BEACH, FLORIDA
CATON OWNER, LLC
3521 ALTON RD SUITE 138, MIAMI BEACH, FL 33140

ARCHITECT OF RECORD
ARQUITECTONICA
2908 Oak Avenue
Miami, Florida 33133
T 305.372.1812
F 305.372.1175
www.arquitectonica.com

STRUCTURAL ENGINEER:

M.E.P. ENGINEER:

MIAMI, FL 33122

LANDSCAPE ARCHITECT

MIAMI FL 33133

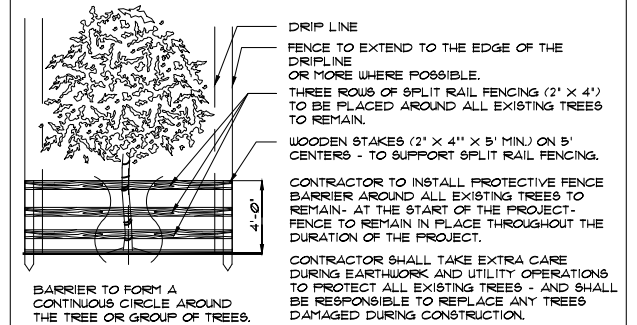
CIVIL ENGINEER:

MIAMI FL 33144

CONSULTANT:

CONSULTANT:

LIGHTING CONSULTANT:



TREE PROTECTION DETAIL
N.T.S.

NOTES:

- A WRITTEN TREE REMOVAL PERMIT IS REQUIRED FROM THE LOCAL GOVERNING AGENCY PRIOR TO REMOVAL OF ANY TREES OR PALMS FROM THE SITE.
- SEE LANDSCAPE PLANS FOR PROPOSED LANDSCAPE PLANTINGS, LANDSCAPE LEGEND, PLANTLIST, SPECIFICATIONS, DETAILS, ETC.
- THE CONTRACTOR SHALL REMOVE ALL TREES AND HEDGES AS PER PLANS AND AS APPROVED BY THE LOCAL GOVERNING AGENCIES (THE CITY OF MIAMI BEACH). TREE, PALM AND HEDGE MATERIAL SHALL INCLUDE ALL TRUNKS, STUMPS AND ROOTS. ALL EXCESS DEBRIS SHALL BE REMOVED FROM THE SITE AND DISPOSED OF AT AN APPROVED SITE. ALL HOLES AND DEPRESSIONS SHALL BE BACKFILLED WITH CLEAN, APPROVED BACKFILL.
- LOCATIONS SHOWN FOR THE EXISTING TREES AND PALMS ARE APPROXIMATE, EXACT LOCATIONS ARE TO BE FIELD VERIFIED BY A REGISTERED LAND SURVEYOR (RLS) PRIOR TO ANY PAVING OR ANY OTHER SUCH WORK WHICH WILL BE IMPACTED BY ANY TREES OR PALMS TO REMAIN.
- ALL INVASIVE EXOTIC VEGETATION AND ANY ANY OTHER PLANTS LISTED AS CATEGORY I, ON THE FLORIDA EXOTIC PEST PLANT COUNCIL'S LIST OF FLORIDA'S MOST INVASIVE SPECIES SHALL BE REMOVED FROM THE SITE AND MAINTENANCE SHALL GUARANTEE CONTROL OF RE-INVASION.

A WRITTEN TREE REMOVAL PERMIT IS REQUIRED FROM THE CITY OF MIAMI BEACH PRIOR TO REMOVAL OF ANY TREES OR PALMS FROM THIS SITE.

SEE LANDSCAPE PLANS FOR LANDSCAPE PLANTINGS PLANTLIST, SPECIFICATIONS, DETAILS, ETC.

SEAL / SIGNATURE / DATE

JAMES F. SOCCASH
R.L.A. # 000132
SITE PLAN SUBMITTAL

OFFICE REGISTRATION #: AA C000465

Date Revision

Issue Issue Date / For

ARQ Project No.: 3346

Drawn by:

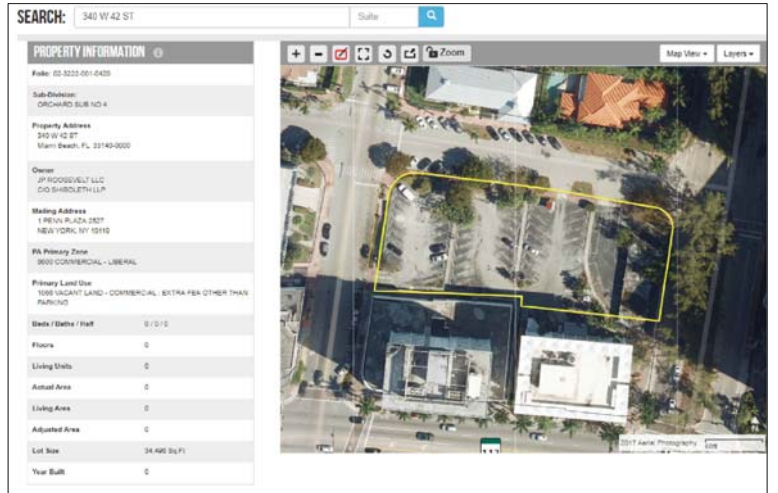
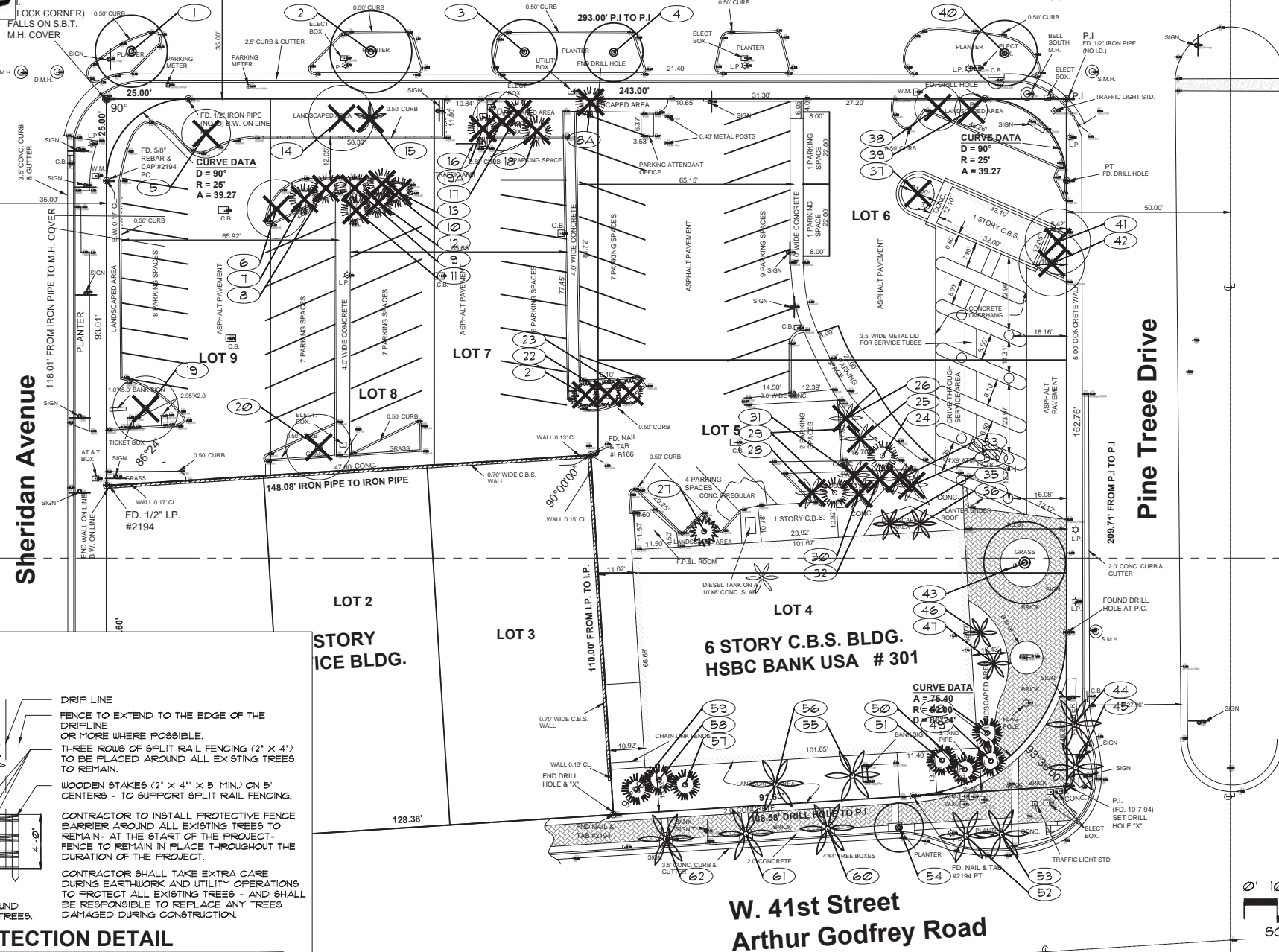
Approved by:

SHEET INDEX

TREE DISPOSITION PLAN

TD-1

W. 42nd Street



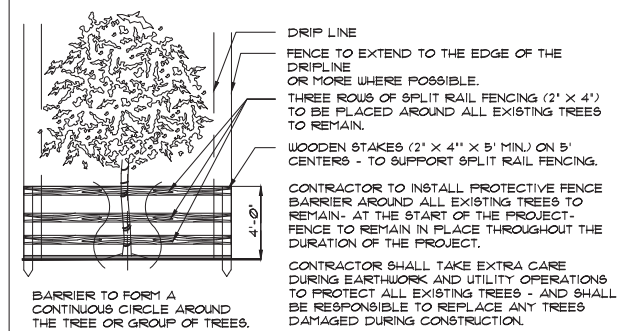
TREE REMOVAL REPLACEMENT SCHEDULE		
340 W. 42nd St., MIAMI BEACH, FL. 33140		
FEB. 12, 2018		
EXISTING TREE CANOPY 9,540 SQ. FT.	REQUIRED SQ. FT.	PROVIDED SQ. FT.
TOTAL TREE CANOPY LOSS		
PROPOSED TREES:		
CATEGORY 1 TREE (12' H) = 36 Trees 300 sq. ft. / tree (9 GRA + 2 CD + 9 ILE + 11 MGB + 5 QVB)		10,800
CATEGORY 2 TREE (10' H) = 2 Tree 150 sq. ft. / tree (2 CS)		300
CATEGORY 3 TREE (10' H) = 0 Tree 100 sq. ft. / tree		0
CATEGORY 4 PALM (6' Clear trunk) = 0 palms 50 sq. ft. / palm		0
		11,100 SQ.FT.

NOTES:

- A WRITTEN TREE REMOVAL PERMIT IS REQUIRED FROM THE LOCAL GOVERNING AGENCY PRIOR TO REMOVAL OF ANY TREES OR PALMS FROM THE SITE.
- SEE LANDSCAPE PLANS FOR PROPOSED LANDSCAPE PLANTINGS, LANDSCAPE LEGEND, PLANTLIST, SPECIFICATIONS, DETAILS, ETC.
- THE CONTRACTOR SHALL REMOVE ALL TREES AND HEDGES AS PER PLANS AND AS APPROVED BY THE LOCAL GOVERNING AGENCIES (THE CITY OF MIAMI BEACH). TREE, PALM AND HEDGE MATERIAL SHALL INCLUDE ALL TRUNKS, STUMPS AND ROOTS. ALL EXCESS DEBRIS SHALL BE REMOVED FROM THE SITE AND DISPOSED OF AT AN APPROVED SITE. ALL HOLES AND DEPRESSIONS SHALL BE BACKFILLED WITH CLEAN, APPROVED BACKFILL.
- LOCATIONS SHOWN FOR THE EXISTING TREES AND PALMS ARE APPROXIMATE, EXACT LOCATIONS ARE TO BE FIELD VERIFIED BY A REGISTERED LAND SURVEYOR (RLS) PRIOR TO ANY PAVING OR ANY OTHER SUCH WORK WHICH WILL BE IMPACTED BY ANY TREES OR PALMS TO REMAIN.
- ALL INVASIVE EXOTIC VEGETATION AND ANY ANY OTHER PLANTS LISTED AS CATEGORY 1, ON THE FLORIDA EXOTIC PEST PLANT COUNCIL'S LIST OF FLORIDA'S MOST INVASIVE SPECIES SHALL BE REMOVED FROM THE SITE AND MAINTENANCE SHALL GUARANTEE CONTROL OF RE-INVASION.

A WRITTEN TREE REMOVAL PERMIT IS REQUIRED FROM THE CITY OF MIAMI BEACH PRIOR TO REMOVAL OF ANY TREES OR PALMS FROM THIS SITE.

SEE LANDSCAPE PLANS FOR LANDSCAPE PLANTINGS PLANTLIST, SPECIFICATIONS, DETAILS, ETC.



TREE PROTECTION DETAIL

N.T.S.

340 WEST 42nd ST., MIAMI BEACH, FL. 33140										
TREE NUM	SYM	COMMON NAME	BOTANICAL NAME	HEIGHT	SPREAD	DBH inches	STATUS	CANOPY LOSS	DBH LOSS	PALM LOSS
1	SM	MAHOGANY	Swietenia mahagoni	20	22	12	REMAIN	79		
2	SM	MAHOGANY	Swietenia mahagoni	22	25	16	REMAIN	79		
3	SM	MAHOGANY	Swietenia mahagoni	18	20	12	REMAIN	79		
4	SM	MAHOGANY	Swietenia mahagoni	18	18	8	REMAIN	79		
5	PAN	SCREW PINE	Pandanus utilis	12	15	multi	REMOVE	79	79	
6	BA	SCHIEFLER	Brassia actinophylla	18	18	multi	REMOVE	79	79	
7	SP	SABAL PALM	Sabal palmetto	10	10	12	REMOVE	79	79	
8	SP	SABAL PALM	Sabal palmetto	10	10	12	REMOVE	79	79	
9	SP	SABAL PALM	Sabal palmetto	10	10	12	REMOVE	79	79	
10	SP	SABAL PALM	Sabal palmetto	10	10	12	REMOVE	79	79	
11	SP	SABAL PALM	Sabal palmetto	10	10	12	REMOVE	314	314	
12	SP	SABAL PALM	Sabal palmetto	10	10	12	REMOVE	79	79	
13	SP	SABAL PALM	Sabal palmetto	10	10	12	REMOVE	79	79	
14	SM	MAHOGANY	Swietenia mahagoni	22	20	8.8.8	REMOVE	314	314	
15	CV	BOTTLEBRUSH	Callistemon viminalis	14	10	7	REMOVE	79	79	
16	SP	SABAL PALM	Sabal palmetto	14	10	10	REMOVE	79	79	
17	SP	SABAL PALM	Sabal palmetto	14	10	10	REMOVE	79	79	
18	SP	SABAL PALM	Sabal palmetto	14	10	10	REMOVE	79	79	
18A	SP	SABAL PALM	Sabal palmetto	16	12	12	REMOVE	113	113	
19	TH	PINK TABEBUIA	Tabebuia heterophylla	20	16	5	REMOVE	201	201	
19A	BA	SCHIEFLER	Brassia actinophylla	20	20	multi	REMOVE	314	314	
20	BA	SCHIEFLER	Brassia actinophylla	20	20	multi	REMOVE	314	314	
21	THR	THATCH PALM	Thrinax species	18	8	6	REMOVE	50	50	
22	THR	THATCH PALM	Thrinax species	22	8	6	REMOVE	50	50	
23	THR	THATCH PALM	Thrinax species	16	8	6	REMOVE	50	50	
24	SP	SABAL PALM	Sabal palmetto	16	12	10	REMOVE	113	113	
25	PE	SOLITAIRE PALM	Pychosperma elegans	18	8	4	REMOVE	50	50	
26	PE	SOLITAIRE PALM	Pychosperma elegans	18	8	4	REMOVE	50	50	
27	WR	WASHINGTONIA PALM	Washingtonia robusta	35	12	10	REMAIN	113		
28	PE	SOLITAIRE PALM	Pychosperma elegans	24	8	3	REMOVE	50	50	
29	SP	SABAL PALM	Sabal palmetto	30	12	9	REMOVE	113	113	
30	PE	SOLITAIRE PALM	Pychosperma elegans	25	8	4	REMOVE	50	50	
31	PE	SOLITAIRE PALM	Pychosperma elegans	25	8	4	REMOVE	50	50	
32	PE	SOLITAIRE PALM	Pychosperma elegans	25	8	4	REMOVE	50	50	
33	PE	SOLITAIRE PALM	Pychosperma elegans	25	8	4	REMOVE	50	50	
34	PE	SOLITAIRE PALM	Pychosperma elegans	25	8	4	REMOVE	50	50	
35	PE	SOLITAIRE PALM	Pychosperma elegans	25	8	4	REMAIN	50		
36	PE	SOLITAIRE PALM	Pychosperma elegans	25	8	4	REMAIN	50		
37	QV	LIVE OAK	Quercus virginiana	18	8	8	REMOVE	50	50	
38	TH	PINK TABEBUIA	Tabebuia heterophylla	20	14	6	REMOVE	154	154	
39	TH	PINK TABEBUIA	Tabebuia heterophylla	12	10	3	REMOVE	79	79	
40	SM	MAHOGANY	Swietenia mahagoni	20	20	12	REMAIN	314		
41	BA	SCHIEFLER	Brassia actinophylla	25	20	multi	REMOVE	314	314	
42	BA	SCHIEFLER	Brassia actinophylla	25	20	multi	REMOVE	314	314	
43	BS	GLIMBO LIMBO	Bursaria glimbo	25	25	14		491		
44	RE	ROYAL PALM	Roystonea elata	30	20	14		314		
45	RE	ROYAL PALM	Roystonea elata	30	20	14		314		
46	AM3	CHRISTMAS PALM	Adonidia merillii	30	15	5.5.5		177		
47	AM4	CHRISTMAS PALM	Adonidia merillii	20	15	5.5.5		177		
48	SP	SABAL PALM	Sabal palmetto	16	10	8		79		
49	SP	SABAL PALM	Sabal palmetto	18	10	8		79		
50	SP	SABAL PALM	Sabal palmetto	22	12	9		113		
51	SP	SABAL PALM	Sabal palmetto	28	12	9		113		
52	RE	ROYAL PALM	Roystonea elata	32	20	18		314		
53	RE	ROYAL PALM	Roystonea elata	32	20	18		314		
54	TC	YELLOW TABEBUIA	Tabebuia caralba	16	15	10		177		
55	RE	ROYAL PALM	Roystonea elata	32	20	18		314		
56	RE	ROYAL PALM	Roystonea elata	32	20	18		314		
57	SP	SABAL PALM	Sabal palmetto	16	12	8		113		
58	SP	SABAL PALM	Sabal palmetto	25	12	8		113		
59	SP	SABAL PALM	Sabal palmetto	25	12	8		113		
60	RE	ROYAL PALM	Roystonea elata	30	20	16		314		
61	RE	ROYAL PALM	Roystonea elata	30	20	16		314		
62	RE	ROYAL PALM	Roystonea elata	30	20	16		314		
TOTALS								9,540	4,126	

FIELD VERIFICATION PERFORMED ON JANUARY 12, 2018

TREE DISPOSITION PLAN

TD-1

APPROVED

MIAMI BEACH
MIAMI BEACH
340 WEST 42ND STREET MIAMI BEACH, FLORIDA
CATON OWNER, LLC
3521 ALTON RD SUITE 138, MIAMI BEACH, FL 33140

ARCHITECT OF RECORD
ARQUITECTONICA
3908 Oak Avenue
Miami, Florida 33133
T 305.372.1812
F 305.372.1115
www.arquitectonica.com

STRUCTURAL ENGINEER:

M.E.P. ENGINEER:

MIAMI, FL 33122

LANDSCAPE ARCHITECT

MIAMI, FL 33133

CIVIL ENGINEER:

MIAMI, FL 33144

CONSULTANT:

CONSULTANT:

LIGHTING CONSULTANT:

SEAL / SIGNATURE / DATE

JAMES F. SOCCASH
R.L.A. # 000132
SITE PLAN SUBMITTAL

OFFICE REGISTRATION #: AA C000465

Date Revision

Issue Issue Date / For

ARQ Project No.: 3346

Drawn by:

Approved by:

SHEET INDEX

L-1

© 2008 ARQUITECTONICA INTERNATIONAL, INC.

W. 42nd Street

NEW LANDSCAPE AREA IN RIGHT OF WAY TO BE CREATED DUE TO ELIMINATION OF EXISTING DRIVEWAYS. SEE CIVIL PLANS WITH CITY PUBLIC WORKS APPROVAL.

SIGHT TRIANGLE
NO ENCROACHMENT

Sheridan Avenue

Pine Tree Drive

SIGHT TRIANGLE
NO ENCROACHMENT

PROPOSED 'DEEPROOT SILVA CELLS' INSTALLATION SEE SHEET L-6 FOR LAYOUT INSTRUCTIONS, DETAILS, ETC.

PROPOSED 'DEEPROOT SILVA CELLS' INSTALLATION SEE SHEET L-6 FOR LAYOUT INSTRUCTIONS, DETAILS, ETC.

W. 41st Street
Arthur Godfrey Road



0' 8' 16' 32'
SCALE: 1/16" = 1' - 0"

A WRITTEN TREE REMOVAL PERMIT IS REQUIRED FROM THE CITY OF MIAMI BEACH PRIOR TO REMOVAL OF ANY TREES OR PALMS FROM THIS SITE.

SEE SHEET L-2, L-3 FOR UPPER LEVEL LANDSCAPE PLANTINGS.

SEE SHEET L-4 FOR LANDSCAPE DETAILS, NOTES, SPECIFICATIONS, ETC.

SEE SHEET L-5 FOR BONDED AGGREGATE 'ADDAFAVE' DETAILS AND SPECIFICATIONS.

SEE SHEET L-6 FOR SILVA CELL DETAILS AND SPECIFICATIONS.

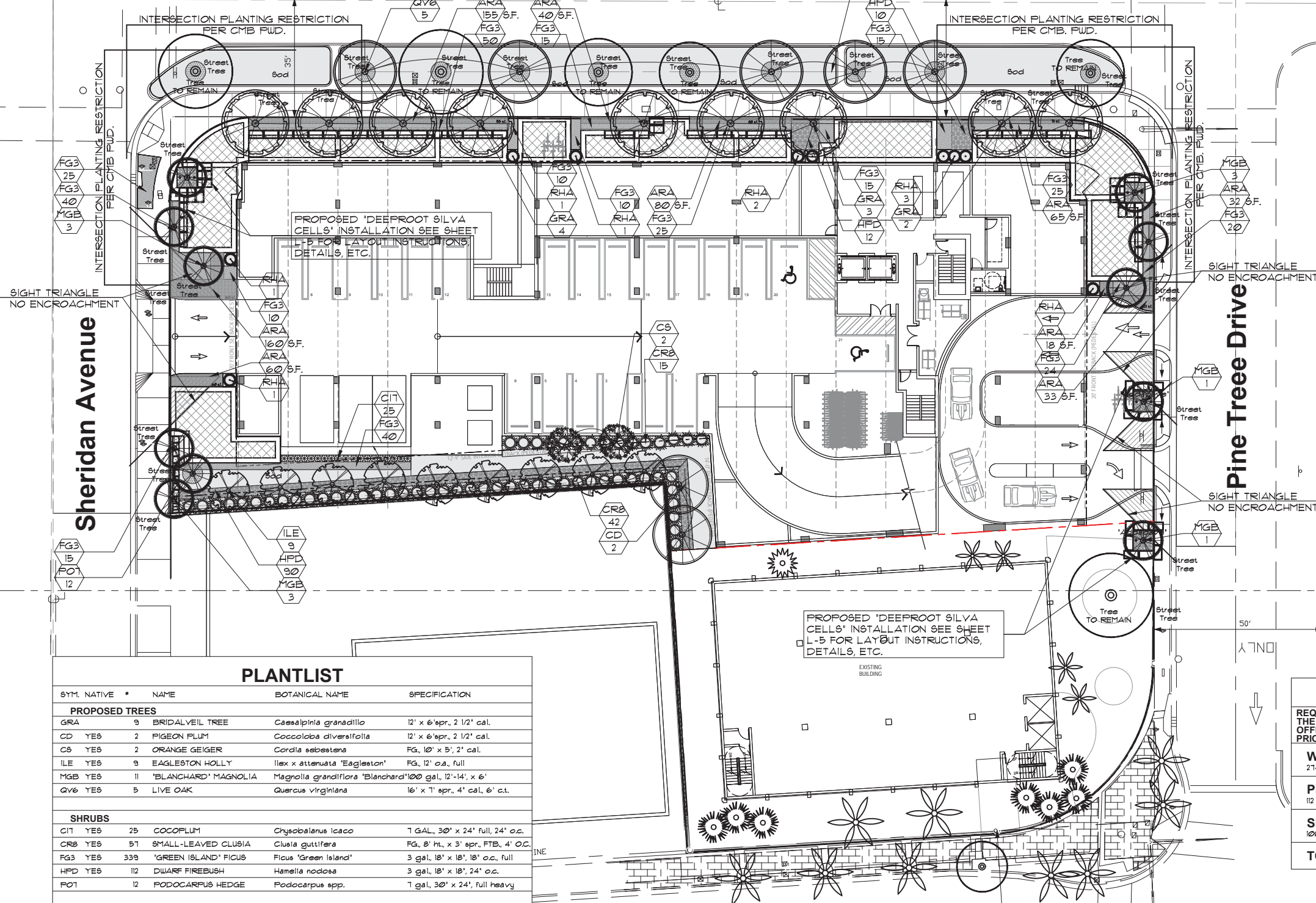
LANDSCAPE PLAN

PLANTLIST

SYM.	NATIVE	*	NAME	BOTANICAL NAME	SPECIFICATION
PROPOSED TREES					
QV6	YES	11	LIVE OAKS	Quercus virginiana	16' x 1" spr, 4" cal, 6' c.t.
CS	YES	9	ORANGE GEIGER	Cordia sebestena	FG, 10' x 5', 2' cal.
SHRUBS					
PO1	155		PODOCARPUS HEDGE	Podocarpus spp.	1 gal, 30' x 24', full heavy
ACCENT PLANTS AND GROUNDCOVERS					
CAT	35		CAT PALMS	Chamadorea cataractum	1 gal, 30' x 24', 30' o.c.
BAM	3		BAMBOO PALM	Chamadorea seifrizii	15 gal, 5' x 24', FTB.
COS	6		COSTUS	Coctus barbarus	1 gal, 24' x 24', 24' o.c., full
BL3	171		BLUEBERRY FLAX LILY	Dianella tasmanica	3 gal, 12' x 18', 18' o.c., full
DS	2		GIANT DIOON	Dioon spinulosum	1 gal, 3' x 3', full, ACOSTA
FG3	30		'GREEN ISLAND' FIGUS	Ficus 'Green Island'	3 gal, 18' x 18', 18' o.c., full
FEN	158		EGYPTIAN STAR CLUSTER	Pentas lanceolata	1 gal, 10' x 10', 14' o.c., full
SVL	35		'SANGVIERIA LAURENTII'	Sansevieria trifasciata	3 gal, 18' x 12', 18' o.c. full
SOD					
PAS	YES	2300 SF.	SEASHORE PASPALUM	Paspalum spp. 'SeaDwarf'	SOLID SOD, price per s.f.
FLO		3200 SF.	'FLORATAM' ST. AUGUSTINE	Stenotaphrum secundatum	SOLID SOD, price per s.f.
TOPSOIL:					
12 C.Y.			TREES, PALMS, SHRUBS AND GROUNDCOVERS		
34 C.Y.			AREA TO BE SODDED WITH A 2" DEPTH OF TOPSOIL SPREAD IN PLACE		
20 C.Y./-			PINE BARK NUGGETS	MULCH, 3" DEPTH, SPREAD IN PLACE	
---			TOPSOIL, SOD AND MULCH QUANTITIES SHOWN ARE APPROXIMATE, CONTRACTOR TO PROVIDE A UNIT PRICE PER UNIT AND WILL BE PAID ON THAT UNIT PRICE BASIS UPON FINAL INSPECTION AND APPROVAL.		

W. 42nd Street

NEW LANDSCAPE AREA IN RIGHT OF WAY TO BE CREATED DUE TO ELIMINATION OF EXISTING DRIVEWAYS. SEE CIVIL PLANS WITH CITY PUBLIC WORKS APPROVAL.



PLANTLIST

SYM.	NATIVE	*	NAME	BOTANICAL NAME	SPECIFICATION
PROPOSED TREES					
GRA	9		BRIDALVEIL TREE	<i>Caesalpinia granadillo</i>	12' x 6' spr., 2 1/2' cal.
CD	YES	2	PIGEON PLUM	<i>Coccoloba diversifolia</i>	12' x 6' spr., 2 1/2' cal.
CS	YES	2	ORANGE GEIGER	<i>Cordia sebestena</i>	FG, 10' x 5', 2' cal.
ILE	YES	9	EAGLESTON HOLLY	<i>Ilex x attenuata 'Eagleston'</i>	FG, 12' o.s., full
MGB	YES	11	'BLANCHARD' MAGNOLIA	<i>Magnolia grandiflora 'Blanchard'</i>	100 gal., 12'-14', x 6'
QV6	YES	5	LIVE OAK	<i>Quercus virginiana</i>	16' x 1' spr., 4' cal., 6' c.t.
SHRUBS					
C17	YES	25	COCOPLUM	<i>Chrysobalanus icaco</i>	1 GAL., 30' x 24' full, 24' o.c.
CR8	YES	51	SMALL-LEAVED CLUSIA	<i>Clusia guttifera</i>	FG, 8' ht., x 3' spr., FTB., 4' O.C.
FG3	YES	339	'GREEN ISLAND' FIGUS	<i>Ficus 'Green Island'</i>	3 gal., 18' x 18', 18' o.c., full
HPD	YES	112	DWARF FIREBUSH	<i>Hamelia nodosa</i>	3 gal., 18' x 18', 24' o.c.
PO7	12		PODOCARPUS HEDGE	<i>Podocarpus spp.</i>	1 gal., 30' x 24', full heavy
ACCENT PLANTS AND GROUNDCOVERS					
ARA	643	S.F.	PERENNIAL PEANUT	<i>Arachis glabrata 'EcoTurf'</i>	6 pots, 8' x 8', 12' o.c., full
RHA	10		LADY PALMS	<i>Rhapis excelsa</i>	5 o.s., FTG., sun acclimated
SOD					
FLO	8,000	S.F.	'FLORATAM' ST. AUGUSTINE	<i>Stenotaphrum secundatum</i>	SOLID SOD, price per s.f.
TOPSOIL:					
18	C.Y.		TREES, PALMS, SHRUBS AND GROUNDCOVERS		
40	C.Y.		AREA TO BE SODDED WITH A 2' DEPTH OF TOPSOIL SPREAD IN PLACE		
50	C.Y./-		PINE BARK NUGGETS	MULCH, 3' DEPTH, SPREAD IN PLACE	
---			TOPSOIL, SOD AND MULCH QUANTITIES SHOWN ARE APPROXIMATE, CONTRACTOR TO PROVIDE A UNIT PRICE PER UNIT AND WILL BE PAID ON THAT UNIT PRICE BASIS UPON FINAL INSPECTION AND APPROVAL.		

CITY OF MIAMI BEACH
LANDSCAPE LEGEND

INFORMATION REQUIRED TO BE PERMANENTLY AFFIXED TO PLANS			
Zoning District <u>CD-3</u>		Lot Area <u>34,496 s.f.</u>	
		Acres <u>0.79</u>	
		REQUIRED/ ALLOWED	PROVIDED
OPEN SPACE			
A. Square feet of required Open Space as indicated on site plan:			
Lot Area = <u>34,496</u> s.f. x <u>20</u> % =		<u>6,899</u> s.f.	<u>3,830</u> s.f.
B. Square feet of parking lot open space required as indicated on site plan:			
Number of parking spaces <u>N/A</u> x 10 s.f. parking space =		<u>N/A</u>	<u>N/A</u>
C. Total square feet of landscaped open space required: A+B=		<u>6,899</u> s.f.	<u>3,830</u> s.f.
LAWN AREA CALCULATION			
A. Square feet of landscaped open space required		<u>6,899</u> s.f.	<u>3,830</u> s.f.
B. Maximum lawn area (sod) permitted= <u>20</u> % x <u>6,899</u> s.f.		<u>1,380</u> s.f.	<u>1,380</u> s.f.
TREES			
A. Number of trees required per lot or net lot acre, less existing number of trees meeting minimum requirements=			
<u>22</u> trees x <u>0.79</u> net lot acres - number of existing trees=		<u>18</u>	<u>18</u>
B. % Natives required: Number of trees provided x 30% =		<u>6</u>	<u>13</u>
C. % Low maintenance / drought and salt tolerant required:			
Number of trees provided x 50%=		<u>9</u>	<u>13</u>
D. Street Trees (maximum average spacing of 20' o.c.)			
<u> </u> ft linear feet along street divided by 20' =		<u>26</u>	<u>26</u>
E. Street tree species allowed directly beneath power lines:			
(maximum average spacing of 20' o.c.):			
<u> </u> linear feet along street divided by 20' =		<u>N/A</u>	<u>N/A</u>
SHRUBS			
A. Number of shrubs required: Sum of lot and street trees required x 12=		<u>528</u>	<u>595</u>
B. % Native shrubs required: Number of shrubs provided x 50%=		<u>264</u>	<u>583</u>
LARGE SHRUBS OR SMALL TREES			
A. Number of large shrubs or small trees required: Number of required shrubs x 10%=			
		<u>53</u>	<u>57</u>
B. % Native large shrubs or small trees required: Number of large shrubs or small trees provided x 50%=			
		<u>27</u>	<u>57</u>

STREET TREE TABULATIONS

REQUIRED STREET TREES ARE SUBJECT TO THE REVIEW AND APPROVAL OF THE CIP OFFICE AND PW GREENSPACE DIVISION PRIOR TO INSTALLATION.	REQUIRED	PROVIDED
West 42nd St. 274 L.F. • 1 TREE / 20 L.F. = 14 TREES	14	14 5 EXIST. • 5 QV6 • 4 GRA
Pine Tree Drive 112 L.F. • 1 TREE / 20 L.F. = 6 TREES	6	6 1 EXIST. • 5 MGB
Sheridan St. 108 L.F. • 1 TREE / 20 L.F. = 6 TREES	6	6 6 MGB
TOTAL	26	26

A WRITTEN TREE REMOVAL PERMIT IS REQUIRED FROM THE CITY OF MIAMI BEACH PRIOR TO REMOVAL OF ANY TREES OR PALMS FROM THIS SITE.

SEE SHEET L-2, L-3 FOR UPPER LEVEL LANDSCAPE PLANTINGS.

SEE SHEET L-4 FOR LANDSCAPE DETAILS, NOTES, SPECIFICATIONS, ETC.

SEE SHEET L-5 FOR DEEPROOT SILVA CELLS, BONDED AGGREGATE DETAILS AND SPECIFICATIONS.

SITE LANDSCAPE PLAN

MIAMI BEACH
MIAMI BEACH
340 WEST 42ND STREET MIAMI BEACH, FLORIDA
CATON OWNER, LLC
3821 ALTON RD SUITE 138, MIAMI BEACH, FL 33140

ARCHITECT OF RECORD
ARQUITECTONICA
2900 Oak Avenue
Miami, Florida 33133
T 305.372.1812
F 305.372.1115
www.arquitectonica.com

STRUCTURAL ENGINEER:

M.E.P. ENGINEER:

MIAMI, FL 33122

LANDSCAPE ARCHITECT

MIAMI FL 33133

CIVIL ENGINEER:

MIAMI FL 33144

CONSULTANT:

CONSULTANT:

LIGHTING CONSULTANT:

SEAL / SIGNATURE / DATE

JAMES F. SOCCASH
R.L.A. # 000132
SITE PLAN SUBMITTAL

OFFICE REGISTRATION #: AA C000465

Date Revision

Issue Issue Date / For

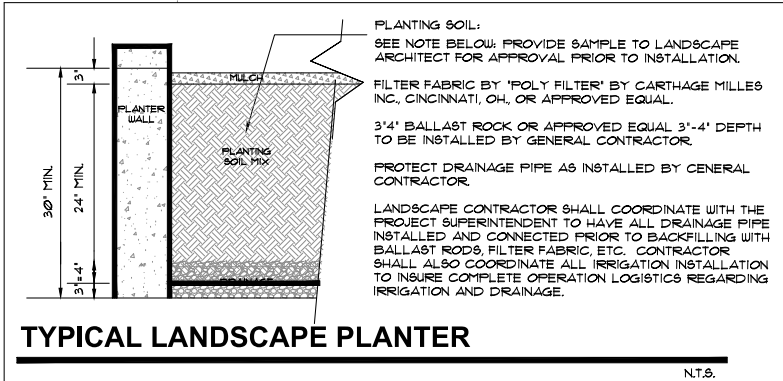
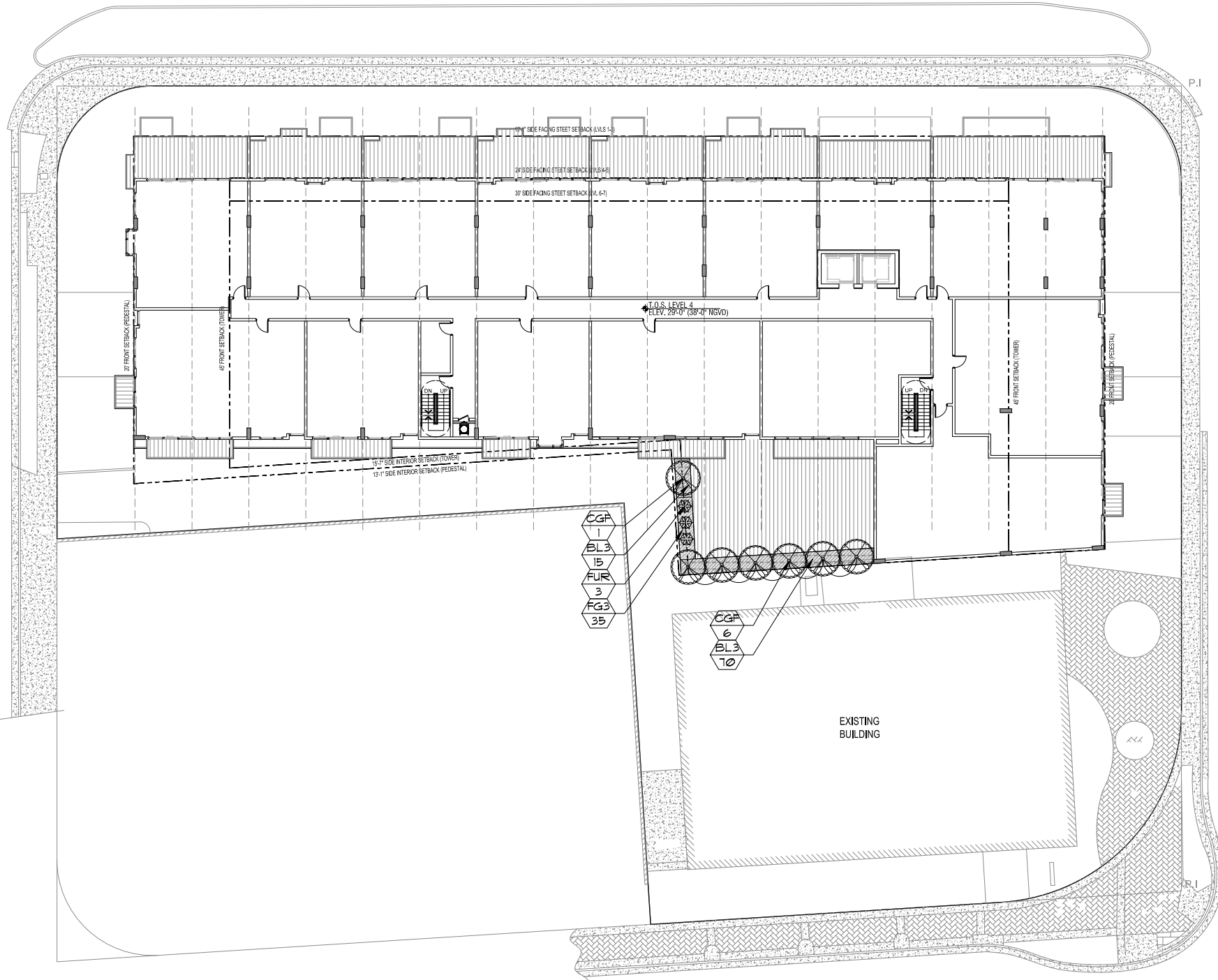
ARQ Project No.: 3346

Drawn by:

Approved by:

SHEET INDEX

L-1



THE LANDSCAPE CONTRACTOR SHALL PROVIDE THE PLANTERS WITH AN APPROVED SOIL MIX.

CONTRACTOR SHALL SUBMIT TO THE LANDSCAPE ARCHITECT A SOIL SAMPLE AND A SOIL MATERIAL RATIO CHART FOR APPROVAL PRIOR TO INSTALLATION OF THE SOIL. SOIL MIX SHALL BE A SPECIAL MIX TO PROVIDE POROSITY FOR DRAINAGE AND CONTAIN AMENDMENTS (PERLITE OR SIMILAR) TO REDUCE SOIL DENSITY AND WEIGHT. SOIL MIX SHALL BE AS PER ATLAS PEAT AND SOIL OR TOM WATERS INC. SOIL MIX OR AN APPROVED EQUAL TO CONTAIN EQUAL OR FORMULATED RATIOS OF THE FOLLOWING:

1. SILICA
2. SOIL
3. COMPOST
4. PERLITE
5. SHAVINGS

THE CONTRACTOR SHALL BE RESPONSIBLE TO FILL THE PLANTING MIX TO A DEPTH WHICH WILL BE 4' FROM THE TOP OF THE PLANTING WALL. SOIL & BALLAST ROCK QUANTITIES ARE APPROX. & WILL BE THE RESPONSIBILITY OF THE CONTRACTOR FOR FINAL GRADE AS PER THIS NOTE.

WALL IMPERMEABILIZATION, DRAINS AND EYE HOOKS SHALL BE PREPARED & INSTALLED BY THE GENERAL CONTRACTOR.

THE LANDSCAPE AND IRRIGATION CONTRACTORS SHALL COORDINATE ALL WORK WITH THE PROJECT MANAGER AND ALL PERTINENT SUBCONTRACTORS TO INSURE A PROFESSIONAL EXPEDITIOUS PROCESS.

ALL PLANTING BEDS SHALL BE MULCHED WITH AN APPROVED RECYCLED MULCH, OR AN APPROVED EQUAL. SEE 'LANDSCAPE NOTES'.

THE CONTRACTOR SHALL SUBMIT PHOTOS FOR ALL SPECIMEN PLANT MATERIAL (ALL PALMS AND TREES) TO THE L.A. FOR APPROVAL PRIOR TO PLANTING.

PLANTLIST				
SYM.	NATIVE	NAME	BOTANICAL NAME	SPECIFICATION
TREES				
CGF	YES	7	SMALL LEAF CLUSIA	Clusia guttifera
Multi-Std, 8'-10' o.s., RUNWAY				
ACCENT PLANTS AND GROUNDCOVERS				
BL3	85	BLUEBERRY FLAX LILY	Dianella tasmanica	3 gal., 12' x 18', 18' o.c., full
FG3	35	'GREEN ISLAND' FICUS	Ficus 'Green Island'	3 gal., 18' x 18', 18' o.c., full
FUR	3	GIANT FALSE AGAVE	Furcraea foetida	15 gal., 4' x 4', full specimen
TOPSOIL:				
22 C.Y. '2100 MIX' FOR PLANTING-PER ATLAS PEAT AND SOIL FOR PLANTER BOXES				
BASED UPON A 2' DEPTH-CONTRACTOR SHALL VERIFY DEPTH PRIOR TO PLANTING.				
MULCHING:				
3 C.Y./- PINE BARK NUGGETS 3' DEPTH, SPREAD IN PLACE, ATLAS PEAT AND SOIL				
PROVIDE SAMPLE FOR APPROVAL PRIOR TO INSTALLATION				
--- TOPSOIL, SOD AND MULCH QUANTITIES SHOWN ARE APPROXIMATE, CONTRACTOR				
TO PROVIDE A UNIT PRICE PER UNIT AND WILL BE PAID ON THAT UNIT PRICE BASIS				
UPON FINAL INSPECTION AND APPROVAL.				

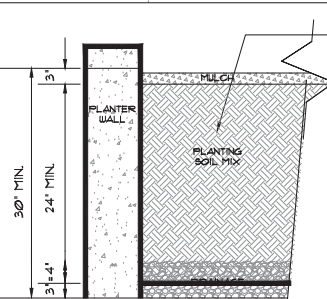
A WRITTEN TREE REMOVAL PERMIT IS REQUIRED FROM THE CITY OF MIAMI BEACH PRIOR TO REMOVAL OF ANY TREES OR PALMS FROM THIS SITE.

SEE SHEET L-2, L-3 FOR UPPER LEVEL LANDSCAPE PLANTINGS.

SEE SHEET L-4 FOR LANDSCAPE DETAILS, NOTES, SPECIFICATIONS, ETC.

SEE SHEET L-5 FOR BONDED AGGREGATE 'ADDAFAVE' DETAILS AND SPECIFICATIONS.

SEE SHEET L-6 FOR SILVA CELL DETAILS AND SPECIFICATIONS.



N.T.S.

WALL IMPERMEABILIZATION, DRAINS AND EYE
HOOKS SHALL BE PREPARED & INSTALLED BY
THE GENERAL CONTRACTOR.

THE LANDSCAPE AND IRRIGATION CONTRACTORS SHALL COORDINATE ALL WORK WITH THE PROJECT MANAGER AND ALL PERTINENT SUBCONTRACTORS TO INSURE A PROFESSIONAL EXPEDITIOUS PROCESS.

ALL PLANTING BEDS SHALL BE MULCHED WITH AN
APPROVED RECYCLED MULCH, OR AN
APPROVED EQUAL. SEE "LANDSCAPE NOTES".

THE CONTRACTOR SHALL SUBMIT PHOTOS FOR ALL SPECIMEN PLANT MATERIAL (ALL PALMS AND TREES) TO THE L.A. FOR APPROVAL PRIOR TO PLANTING.

THE CONTRACTOR SHALL BE RESPONSIBLE TO
FILL THE PLANTING MIX TO A DEPTH WHICH WILL
BE 4' FROM THE TOP OF THE PLANTING WALL.
OIL & BALLAST ROCK QUANTITIES ARE APPROX.
WILL BE THE RESPONSIBILITY OF THE
CONTRACTOR FOR FINAL GRADE AS PER THIS
NOTE.

TM. NATIVE	*	NAME	BOTANICAL NAME	SPECIFICATION
TREES				
GF YES	1	SMALL LEAF CLUSIA	<i>Clusia guttifera</i>	Multi-Std, 8'-10' o.s., RUNWAY

L3	05	BLUEBERRY FLAX LILY	<i>Dianella tasmanica</i>	3 gal, 12" x 18", 18" o.c., full
G3	35	'GREEN ISLAND' FICUS	<i>Ficus 'Green Island'</i>	3 gal, 18" x 18", 18" o.c., full
R	3	GIANT FALSE AGAVE	<i>Furcraea foetida</i>	15 gal, 4' x 4', full specimen

22 C.Y. '2100 MIX' FOR PLANTING-PER ATLAS PEAT AND SOIL FOR PLANTER BOXES
BASED UPON A 2' DEPTH-CONTRACTOR SHALL VERIFY DEPTH PRIOR TO PLANTING.

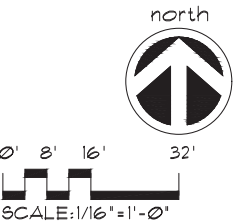
3 C.Y./-	PINE BARK NUGGETS	3' DEPTH, SPREAD IN PLACE, ATLAS FEAT AND SOIL PROVIDE SAMPLE FOR APPROVAL PRIOR TO INSTALLATION
---	TOPSOIL, SOD AND MULCH QUANTITIES SHOWN ARE APPROXIMATE, CONTRACTOR TO PROVIDE A UNIT PRICE PER UNIT AND WILL BE PAID ON THAT UNIT PRICE BASIS UPON FINAL INSPECTION AND APPROVAL.	

A WRITTEN TREE REMOVAL PERMIT IS REQUIRED FROM THE CITY OF MIAMI BEACH PRIOR TO REMOVAL OF ANY TREES OR PALMS FROM THIS SITE.

SEE SHEET L-2, L-3 FOR UPPER LEVEL
LANDSCAPE PLANTINGS.

SEE SHEET L-4 FOR LANDSCAPE DETAILS,
NOTES, SPECIFICATIONS, ETC.

SEE SHEET L-5 FOR DEEPROOT SILVA CELLS
BONDED AGGREGATE DETAILS AND
SPECIFICATIONS.



SEAL / SIGNATURE / DATE

JAMES F. SOGASH
RLA # 0001132
SITE PLAN SUBMITTAL

OFFICE REGISTRATION #: AA C000465

Date Revision

Issue # Issue Date / For

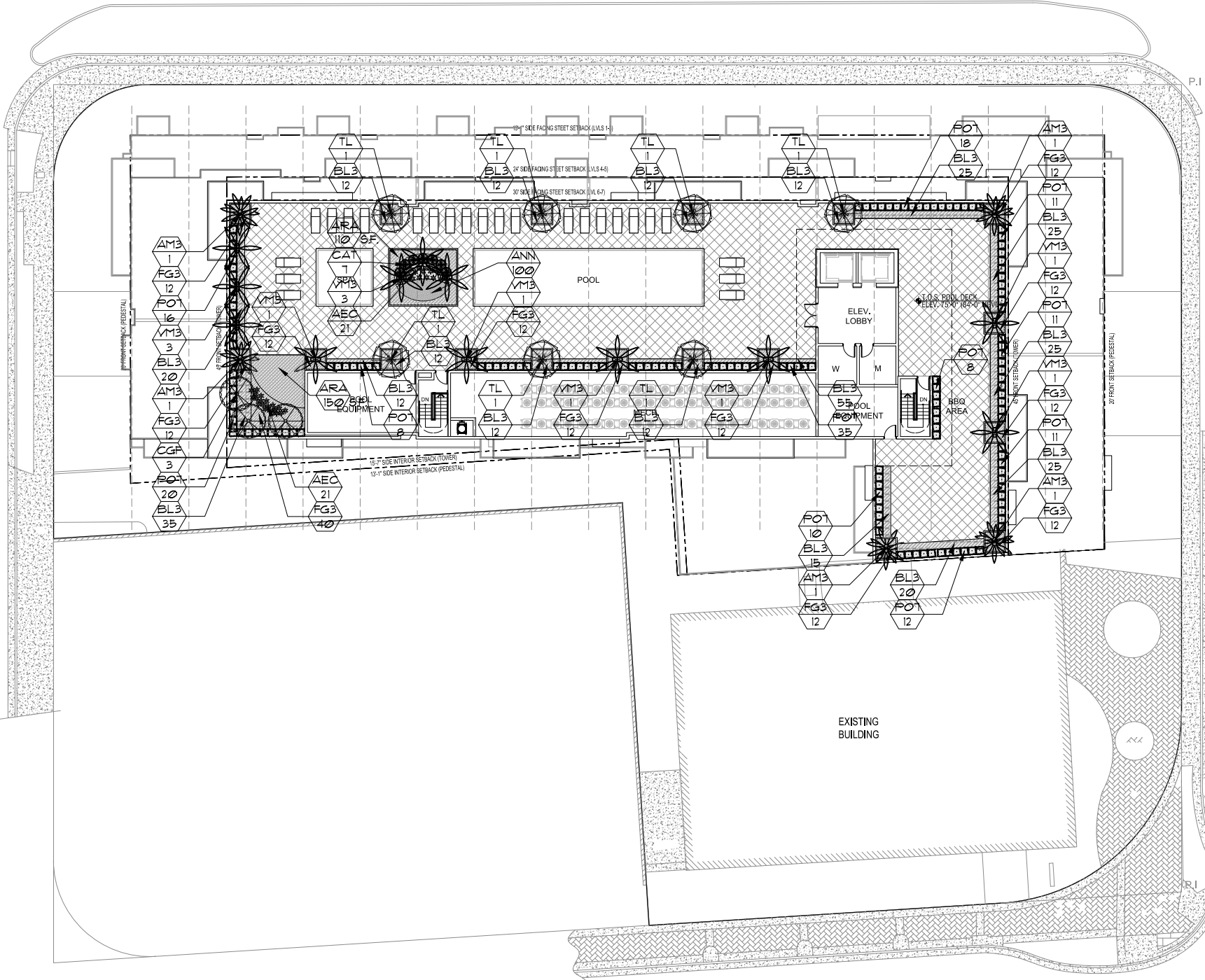
ARQ Project No.: 3346

Drawn by:

Approved by:

SHEET INDEX

L-2



PLANTING SOIL:
SEE NOTE BELOW: PROVIDE COMPLETE LANDSCAPE ARCHITECT FOR APPROVAL PRIOR TO INSTALLATION.

FILTER FABRIC BY 'POLYBUILT' BY WARTHAGE MILL, INC. CINCINNATI, OH, OR APPROVED EQUAL.

3'-4\"/>

PROTECT DRAINAGE PIPE AS INSTALLED BY GENERAL CONTRACTOR.

LANDSCAPE CONTRACTOR SHALL COORDINATE WITH THE PROJECT SUPERINTENDENT TO HAVE ALL DRAINAGE PIPE INSTALLED AND CONNECTED PRIOR TO BACKFILLING WITH BALLAST ROCKS, FILTER FABRIC, ETC. CONTRACTOR SHALL ALSO COORDINATE ALL IRRIGATION INSTALLATION TO INSURE COMPLETE OPERATION LOGISTICS REGARDING IRRIGATION AND DRAINAGE.

THE LANDSCAPE CONTRACTOR SHALL PROVIDE THE PLANTERS WITH AN APPROVED SOIL MIX.

CONTRACTOR SHALL SUBMIT TO THE LANDSCAPE ARCHITECT A SOIL SAMPLE AND A SOIL MATERIAL RATIO CHART FOR APPROVAL PRIOR TO INSTALLATION OF THE SOIL. SOIL MIX SHALL BE A SPECIAL MIX TO PROVIDE POROSITY FOR DRAINAGE, AND CONTAIN AMENDMENTS (PERLITE OR SIMILAR) TO REDUCE SOIL DENSITY AND WEIGHT. SOIL MIX SHALL BE AS PER ATLAS PEAT AND SOIL OR TOM WATERS INC. SOIL MIX OR AN APPROVED EQUAL TO CONTAIN EQUAL OR FORMULATED RATIOS OF THE FOLLOWING:

1. SILICA
2. SOIL
3. COMPOST
4. PERLITE
5. SHAVINGS

THE CONTRACTOR SHALL BE RESPONSIBLE TO FILL THE PLANTING MIX TO A DEPTH WHICH WILL BE 4\"/>

WALL IMPERMEABILIZATION, DRAINS AND EYE HOOKS SHALL BE PREPARED & INSTALLED BY THE GENERAL CONTRACTOR.

THE LANDSCAPE AND IRRIGATION CONTRACTORS SHALL COORDINATE ALL WORK WITH THE PROJECT MANAGER AND ALL PERTINENT SUBCONTRACTORS TO INSURE A PROFESSIONAL EXPEDITIOUS PROCESS.

ALL PLANTING BEDS SHALL BE MULCHED WITH AN APPROVED RECYCLED MULCH, OR AN APPROVED EQUAL. SEE 'LANDSCAPE NOTES'.

THE CONTRACTOR SHALL SUBMIT PHOTOS FOR ALL SPECIMEN PLANT MATERIAL (ALL PALMS AND TREES) TO THE L.A. FOR APPROVAL PRIOR TO PLANTING.

PLANTLIST			
SYM.	NATIVE	NAME	BOTANICAL NAME
SPECIFICATION			
PROPOSED TREES			
CGF	YES	3	SMALL LEAF CLUSIA
TL		7	TREE LIGUSTRUM
BOTANICAL NAME			
SPECIFICATION			
PALMS			
AM3		5	CHRISTMAS PALM
VM3		12	MONTGOMERY PALMS
SHRUBS			
PO1		163	PODOCARPUS HEDGE
ACCENT PLANTS AND GROUNDCOVERS			
AEC		42	AECHMEA BROMELIADS
ARA		260	s.f. PERENNIAL PEANUT
ANN		100	FLOWERING ANNUALS
CAT		7	CAT PALMS
BL3		341	BLUEBERRY FLAX LILY
FG3		168	'GREEN ISLAND' FICUS
TOPSOIL:			
50 C.Y. '2100 MIX' FOR PLANTING-PER ATLAS PEAT AND SOIL FOR PLANTER BOXES			
BASED UPON A 2' DEPTH-CONTRACTOR SHALL VERIFY DEPTH PRIOR TO PLANTING.			
MULCHING:			
1 C.Y./- PINE BARK NUGGETS 3' DEPTH, SPREAD IN PLACE, ATLAS PEAT AND SOIL			
PROVIDE SAMPLE FOR APPROVAL PRIOR TO INSTALLATION			
--- TOPSOIL, SOD AND MULCH QUANTITIES SHOWN ARE APPROXIMATE, CONTRACTOR			
TO PROVIDE A UNIT PRICE PER UNIT AND WILL BE PAID ON THAT UNIT PRICE BASIS			
UPON FINAL INSPECTION AND APPROVAL.			

A WRITTEN TREE REMOVAL PERMIT IS REQUIRED FROM THE CITY OF MIAMI BEACH PRIOR TO REMOVAL OF ANY TREES OR PALMS FROM THIS SITE.

SEE SHEET L-2, L-3 FOR UPPER LEVEL LANDSCAPE PLANTINGS.

SEE SHEET L-4 FOR LANDSCAPE DETAILS, NOTES, SPECIFICATIONS, ETC.

SEE SHEET L-5 FOR BONDED AGGREGATE 'ADDAPAVE' DETAILS AND SPECIFICATIONS.

SEE SHEET L-6 FOR SILVA CELL DETAILS AND SPECIFICATIONS.

ROOF LEVEL
LANDSCAPE PLAN

APPROVED

MIAMI BEACH
MIAMI BEACH
340 WEST 42ND STREET MIAMI BEACH, FLORIDA
CATON OWNER, LLC
3521 ALTON RD SUITE 138, MIAMI BEACH, FL 33140

ARCHITECT OF RECORD
ARQUITECTONICA
2908 Oak Avenue
Miami, Florida 33133
T 305.372.1812
F 305.372.1175
www.arquitectonica.com

STRUCTURAL ENGINEER:

M.E.P. ENGINEER:
MIAMI, FL 33122

LANDSCAPE ARCHITECT
MIAMI FL 33133

CIVIL ENGINEER:
MIAMI FL 33144

CONSULTANT:

CONSULTANT:

LIGHTING CONSULTANT:

SEAL / SIGNATURE / DATE

JAMES F. SOCCASH
R.L.A. # 000132
SITE PLAN SUBMITTAL

OFFICE REGISTRATION #: AA C000465

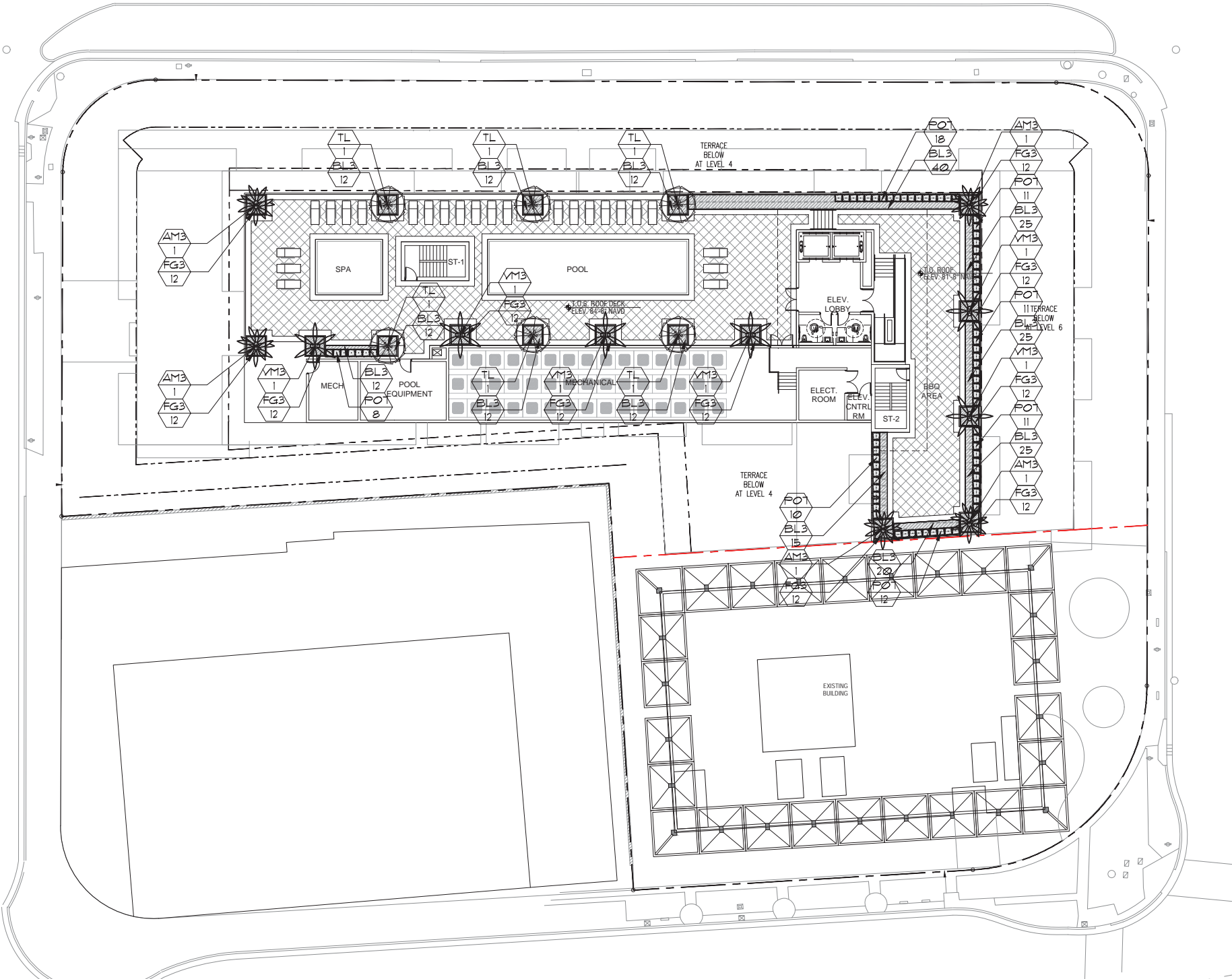
Date Revision

Issue Issue Date / For

ARQ Project No.: 3346
Drawn by:
Approved by:

SHEET INDEX

L-3



TYPICAL LANDSCAPE PLANTER

30" MIN.
24" MIN.
3" MIN.
3'-4"

PLANTER WALL
MULCH
PLANTING SOIL MIX
DRAINAGE

PLANTING SOIL:
SEE NOTE BELOW: PROVIDE SAMPLE TO LANDSCAPE ARCHITECT FOR APPROVAL PRIOR TO INSTALLATION.

FILTER FABRIC BY 'POLY FILTER' BY CARTHAGE MILLES INC. CINCINNATI, OH, OR APPROVED EQUAL.

3'-4" BALLAST ROCK OR APPROVED EQUAL 3'-4" DEPTH TO BE INSTALLED BY GENERAL CONTRACTOR.

PROTECT DRAINAGE PIPE AS INSTALLED BY GENERAL CONTRACTOR.

LANDSCAPE CONTRACTOR SHALL COORDINATE WITH THE PROJECT SUPERINTENDENT TO HAVE ALL DRAINAGE PIPE INSTALLED AND CONNECTED PRIOR TO BACKFILLING WITH BALLAST ROCKS, FILTER FABRIC, ETC. CONTRACTOR SHALL ALSO COORDINATE ALL IRRIGATION INSTALLATION TO INSURE COMPLETE OPERATION LOGISTICS REGARDING IRRIGATION AND DRAINAGE.

N.T.S.

THE LANDSCAPE CONTRACTOR SHALL PROVIDE THE PLANTERS WITH AN APPROVED SOIL MIX.

CONTRACTOR SHALL SUBMIT TO THE LANDSCAPE ARCHITECT A SOIL SAMPLE AND A SOIL MATERIAL RATIO CHART FOR APPROVAL PRIOR TO INSTALLATION OF THE SOIL. SOIL MIX SHALL BE A SPECIAL MIX TO PROVIDE POROSITY FOR DRAINAGE, AND CONTAIN AMENDMENTS (PERLITE OR SIMILAR) TO REDUCE SOIL DENSITY AND WEIGHT. SOIL MIX SHALL BE AS PER ATLAS FEAT AND SOIL OR TOM WATERS INC. SOIL MIX OR AN APPROVED EQUAL TO CONTAIN EQUAL OR FORMULATED RATIOS OF THE FOLLOWING:

1. SILICA
2. SOIL
3. COMPOST
4. PERLITE
5. SHAVINGS

WALL IMPERMEABILIZATION, DRAINS AND EYE HOOKS SHALL BE PREPARED & INSTALLED BY THE GENERAL CONTRACTOR.

THE LANDSCAPE AND IRRIGATION CONTRACTORS SHALL COORDINATE ALL WORK WITH THE PROJECT MANAGER AND ALL PERTINENT SUBCONTRACTORS TO INSURE A PROFESSIONAL EXPEDITIOUS PROCESS.

ALL PLANTING BEDS SHALL BE MULCHED WITH AN APPROVED RECYCLED MULCH, OR AN APPROVED EQUAL. SEE 'LANDSCAPE NOTES'.

THE CONTRACTOR SHALL SUBMIT PHOTOS FOR ALL SPECIMEN PLANT MATERIAL (ALL PALMS AND TREES) TO THE L.A. FOR APPROVAL PRIOR TO PLANTING.

THE CONTRACTOR SHALL BE RESPONSIBLE TO FILL THE PLANTING MIX TO A DEPTH WHICH WILL BE 4" FROM THE TOP OF THE PLANTING WALL. SOIL & BALLAST ROCK QUANTITIES ARE APPROX. & WILL BE THE RESPONSIBILITY OF THE CONTRACTOR FOR FINAL GRADE AS PER THIS NOTE.

PLANTLIST			
SYM.	NATIVE	NAME	SPECIFICATION
PROPOSED TREES			
TL	6	TREE LIGUSTRUM	Ligustrum japonicum FL., FANCY, 8' x 8' full crown
PALMS			
AM3	5	CHRISTMAS PALM	Adonidia merrillii FG., 10' o.a., TPL., full head
VM3	6	MONTGOMERY PALMS	Veitchia montgomeryana TPL. TK, FG., 14' o.a., full hd.
SHRUBS			
POT	81	PODOCARPUS HEDGE	Podocarpus spp. 1 gal., 30" x 24", full heavy
ACCENT PLANTS AND GROUNDCOVERS			
BL3	222	BLUEBERRY FLAX LILY	Dianella tasmanica 3 gal., 12" x 18", 18" o.c., full
FG3	132	'GREEN ISLAND' FICUS	Ficus 'Green Island' 3 gal., 18" x 18", 18" o.c., full
TOPSOIL:			
50 C.Y. '2100 MIX' FOR PLANTING-PER ATLAS FEAT AND SOIL FOR PLANTER BOXES			
BASED UPON A 2' DEPTH-CONTRACTOR SHALL VERIFY DEPTH PRIOR TO PLANTING.			
MULCHING:			
1 C.Y./- PINE BARK NUGGETS 3' DEPTH, SPREAD IN PLACE, ATLAS FEAT AND SOIL			
PROVIDE SAMPLE FOR APPROVAL PRIOR TO INSTALLATION			
--- TOPSOIL, SOD AND MULCH QUANTITIES SHOWN ARE APPROXIMATE, CONTRACTOR			
TO PROVIDE A UNIT PRICE PER UNIT AND WILL BE PAID ON THAT UNIT PRICE BASIS			
UPON FINAL INSPECTION AND APPROVAL.			

A WRITTEN TREE REMOVAL PERMIT IS REQUIRED FROM THE CITY OF MIAMI BEACH PRIOR TO REMOVAL OF ANY TREES OR PALMS FROM THIS SITE.

SEE SHEET L-2, L-3 FOR UPPER LEVEL LANDSCAPE PLANTINGS.

SEE SHEET L-4 FOR LANDSCAPE DETAILS, NOTES, SPECIFICATIONS, ETC.

SEE SHEET L-5 FOR DEEPROOT SILVA CELLS, BONDED AGGREGATE DETAILS AND SPECIFICATIONS.

north

0' 8' 16' 32'

SCALE: 1/16" = 1'-0"

ROOF LEVEL LANDSCAPE PLAN

MIAMI BEACH
MIAMI BEACH
340 WEST 42ND STREET MIAMI BEACH, FLORIDA
CATON OWNER, LLC
3821 ALTON RD SUITE 138, MIAMI BEACH, FL 33140

ARCHITECT OF RECORD
ARQUITECTONICA
2808 Oak Avenue
Miami, Florida 33133
T 305.372.1812
F 305.372.1115
www.arquitectonica.com

STRUCTURAL ENGINEER:

M.E.P. ENGINEER:

MIAMI, FL 33122

LANDSCAPE ARCHITECT

MIAMI FL 33133

CIVIL ENGINEER:

MIAMI FL 33144

CONSULTANT:

CONSULTANT:

LIGHTING CONSULTANT:

SEAL / SIGNATURE / DATE

JAMES F. SOCCASH
R.L.A. # 000132
SITE PLAN SUBMITTAL

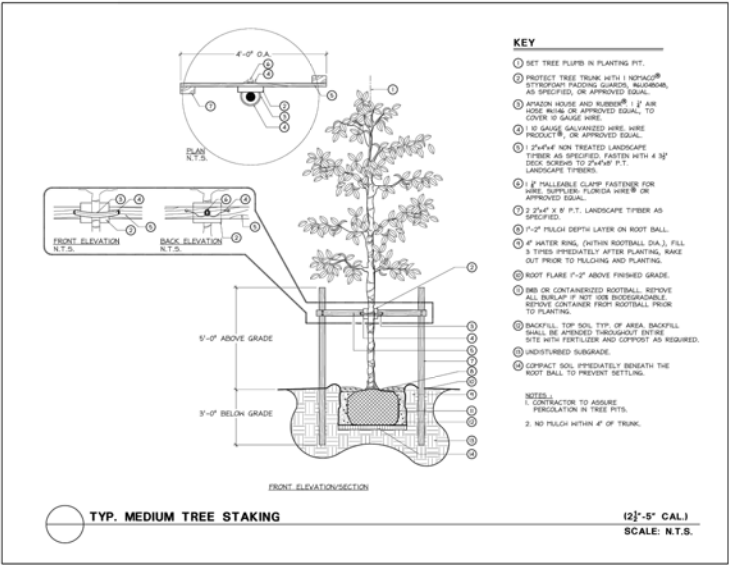
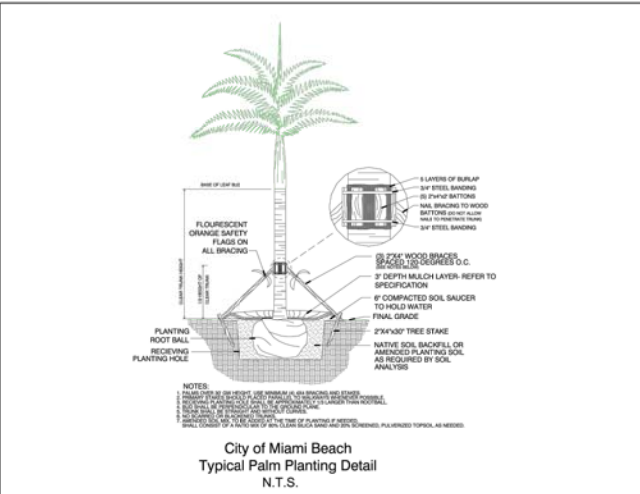
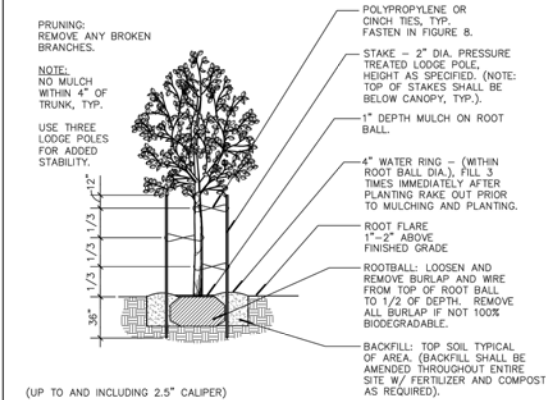
OFFICE REGISTRATION #: AA C000465

Date Revision

Issue (S) Issue Date / For

ARQ Project No.: 3346
Drawn by:
Approved by:

SHEET INDEX



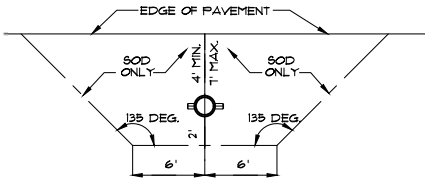
PLANTING SOIL:

NOTE: ALL LANDSCAPED AREAS INCLUDING LANDSCAPE ISLANDS SHALL BE EXCAVATED TO A DEPTH OF 2.0 FEET FOR REMOVAL OF ALL COMPACTED MATERIAL, LIMESTONE, ETC. AND BACKFILLED WITH A CLEAN, APPROVED BACKFILL. 50:50 TOPSOIL SHALL BE APPLIED TO A DEPTH OF 6\"/>

FERTILIZATION:

ONE COMPLETE APPLICATION OF GRANULAR FERTILIZER SHALL BE APPLIED PRIOR TO FINAL ACCEPTANCE AND APPROVAL BY THE LANDSCAPE ARCHITECT. AN ADDITIONAL FERTILIZATION PROGRAM SHALL BE SUBMITTED TO THE PROJECT MANAGER FOR AN ANNUAL FERTILIZATION APPLICATION PROGRAM. FERTILIZERS SHALL BE PER ATLANTIC AFEC FERTILIZER 4 CHEMICAL (AFEC) OR AN APPROVED EQUAL. CONTRACTOR SHALL SUBMIT FERTILIZATION AS A SEPARATE ITEM IN THE BID.

FERTILIZATION SHALL BE AS FOLLOWS: TREES: 12-06-08 (AFEC * 9231) RATE: 15 LBS/ INCH OF DIA. * DBH PALMS: 12-04-12 (AFEC * 1216) RATE: 15 LBS/ INCH OF DIA. * DBH SHRUBS AND GROUNDCOVERS: (12-06-08 AFEC * 9231) RATE: 15 OZ. FT. OF HEIGHT



REQUIREMENTS APPLY TO FIRE HYDRANTS, SHAMOSE CONNECTIONS AND ANY OTHER FIRE EQUIPMENT FOR UTILIZING FIRE HOSE, ON PUBLIC OR PRIVATE PROPERTY. BY THE AUTHORITY OF THE SOUTH FLORIDA FIRE PREVENTION CODE SECTION 5212

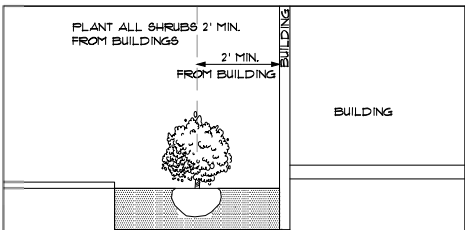
THIS DIAGRAM SHALL APPEAR ON ALL LANDSCAPE PLANS PRIOR TO APPROVAL.

THE CLEAR ZONE SHALL BE FREE OF LANDSCAPE (EXCEPT SOD), MAILBOXES, PARKING, LAMP-POSTS AND ALL OTHER OBJECTS.

EXCEPTIONS: OTHER FIRE FIGHTING EQUIPMENT OR TRAFFIC POSTS TO PREVENT FIRE FIGHTING EQUIPMENT.

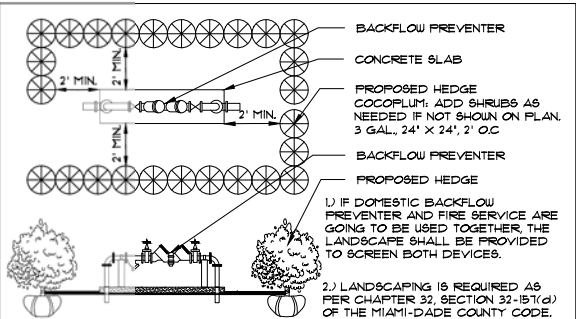
FIRE HYDRANT CLEAR ZONE

N.T.S.



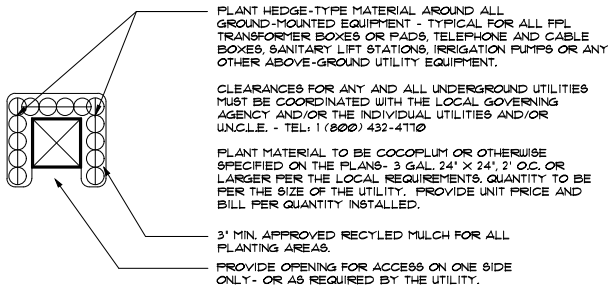
SHRUB PLANTINGS BUILDING DETAIL

N.T.S.



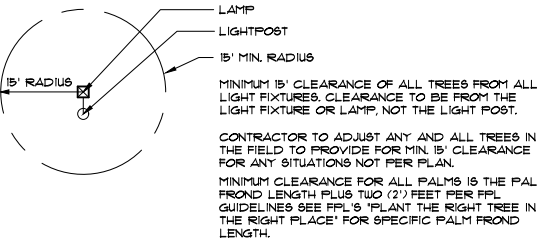
TYPICAL PLANTING SCREEN FOR ABOVE-GROUND UTILITIES

N.T.S.



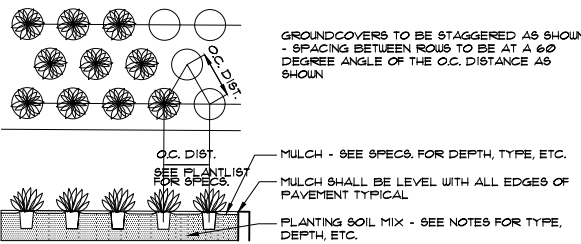
TYPICAL PLANTINGS FOR GROUND-MOUNTED EQUIPMENT

N.T.S.



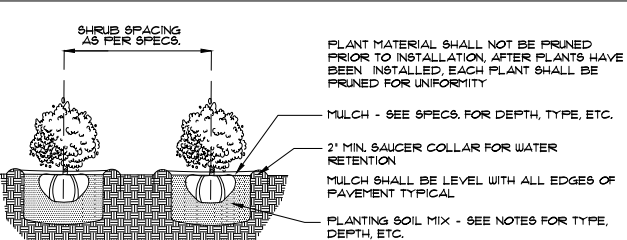
MINIMUM TREE CLEARANCE FROM LIGHT FIXTURES

N.T.S.



GROUNDCOVER DETAIL

N.T.S.



SHRUB PLANTING DETAIL

N.T.S.

APPROVED

MIAMI BEACH
MIAMI BEACH
340 WEST 42ND STREET MIAMI BEACH, FLORIDA
CATON OWNER, LLC
3551 ALTON RD SUITE 138, MIAMI BEACH, FL 33140

ARCHITECT OF RECORD

ARQUITECTONICA

2808 Oak Avenue
Miami, Florida 33133
T 305.372.1812
F 305.372.1175
www.arquitectonica.com

STRUCTURAL ENGINEER:

M.E.P. ENGINEER:

MIAMI, FL 33122

LANDSCAPE ARCHITECT

MIAMI FL 33133

CIVIL ENGINEER:

MIAMI FL 33144

CONSULTANT:

CONSULTANT:

LIGHTING CONSULTANT:

SEAL / SIGNATURE / DATE

JAMES F. SOCCASH
R.L.A. # 000132
SITE PLAN SUBMITTAL

OFFICE REGISTRATION #: AA C000465

Date Revision

Issue Issue Date / For

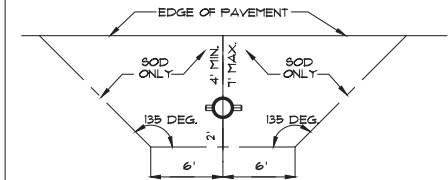
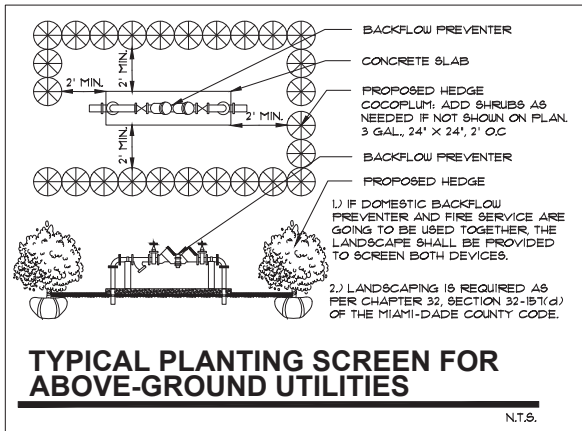
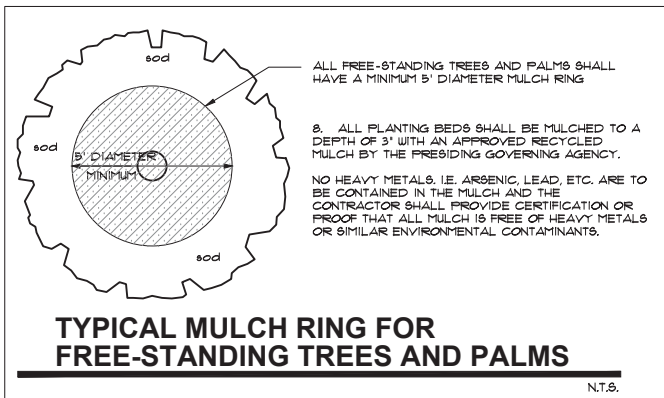
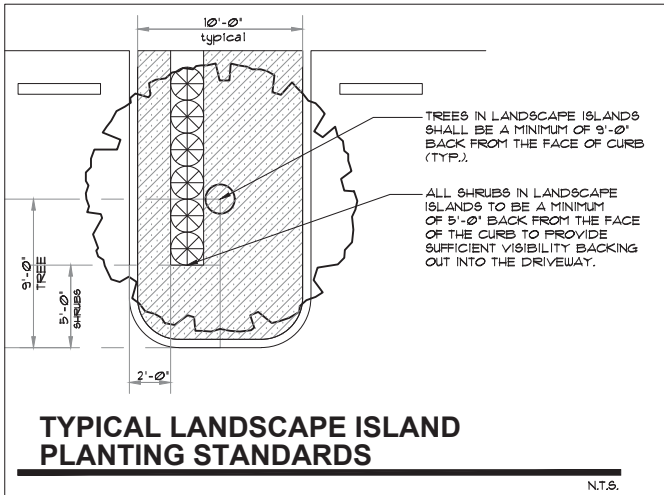
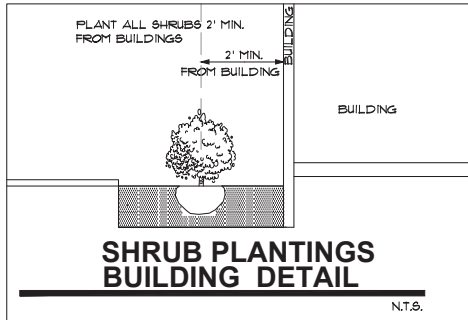
ARQ Project No.: 3346

Drawn by:

Approved by:

SHEET INDEX

L-4



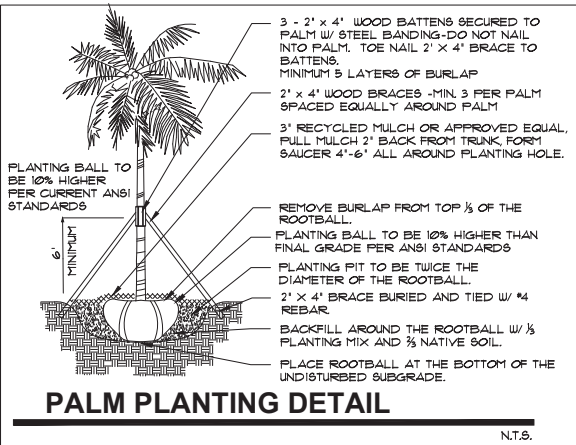
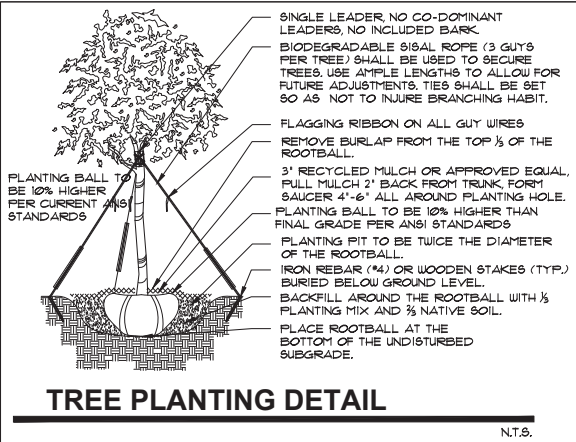
REQUIREMENTS APPLY TO FIRE HYDRANTS, SIAMENSE CONNECTIONS AND ANY OTHER FIRE EQUIPMENT FOR UTILIZING FIRE HOSE, ON PUBLIC OR PRIVATE PROPERTY.

BY THE AUTHORITY OF THE SOUTH FLORIDA FIRE PREVENTION CODE SECTION 5212

THIS DIAGRAM SHALL APPEAR ON ALL LANDSCAPE PLANS PRIOR TO APPROVAL.

THE CLEAR ZONE SHALL BE FREE OF LANDSCAPE (EXCEPT SOD), MAILBOXES, PARKING LAMP-POSTS AND ALL OTHER OBJECTS.

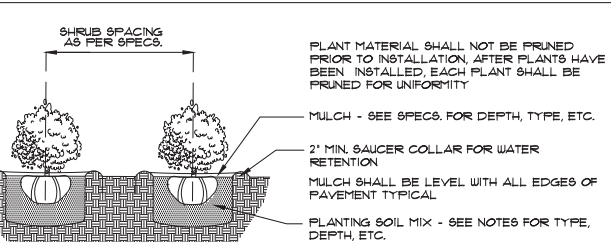
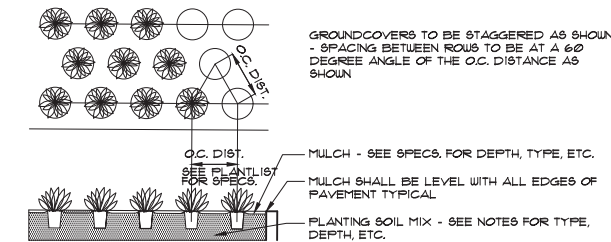
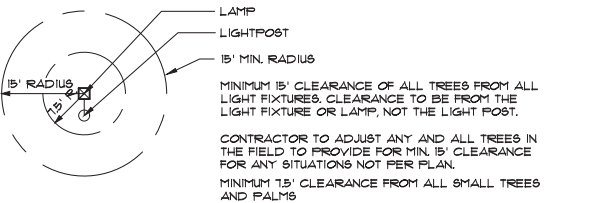
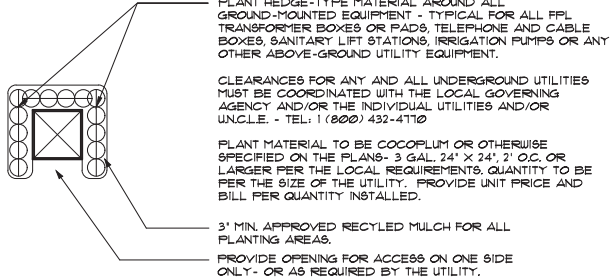
EXCEPTIONS: OTHER FIRE FIGHTING EQUIPMENT OR TRAFFIC POSTS TO PREVENT FIRE FIGHTING EQUIPMENT.



FERTILIZATION:

ONE COMPLETE APPLICATION OF GRANULAR FERTILIZER SHALL BE APPLIED PRIOR TO FINAL ACCEPTANCE AND APPROVAL BY THE LANDSCAPE ARCHITECT. AN ADDITIONAL FERTILIZATION PROGRAM SHALL BE SUBMITTED TO THE PROJECT MANAGER FOR AN ANNUAL FERTILIZATION APPLICATION PROGRAM. FERTILIZERS SHALL BE PER ATLANTIC -AFEC FERTILIZER 4 CHEMICAL (AFEC) OR AN APPROVED EQUAL. CONTRACTOR SHALL SUBMIT FERTILIZATION AS A SEPARATE ITEM IN THE BID.

FERTILIZATION SHALL BE AS FOLLOWS: TREES: (2-06-08 (AFEC # 5231) RATE: 15 LBS./ INCH OF D.I.A. # DBH PALMS: (2-04-12 (AFEC # 1216) RATE: 15 LBS./ INCH OF D.I.A. # DBH SHRUBS AND GROUNDCOVERS: (12-06-08 AFEC # 5231) RATE: 15 OZ./ FT. OF HEIGHT



LANDSCAPE NOTES

- ALL PLANT MATERIAL SHALL BE FLORIDA NO. 1 GRADE OR BETTER.
- CONTRACTOR SHALL FAMILIARIZE HIMSELF WITH THE LOCATION OF AND AVOID AND PROTECT UTILITY LINES, BURIED CABLES, AND OTHER UTILITIES.
- TREE, PALM, ACCENT AND BED LINES ARE TO BE LOCATED IN THE FIELD AND APPROVED BY THE LANDSCAPE ARCHITECT PRIOR TO INSTALLATION.
- ALL PLANTING SOIL SHALL BE 50:50 TOPSOIL:SAND MIX, FREE OF CLAY, STONES, ROCKS, OR OTHER FOREIGN MATTER. THIS SPECIFICATION INCLUDES ALL BACKFILL FOR BEDS AND OTHER LANDSCAPE AREAS.
- THE SITE CONTRACTOR SHALL BE RESPONSIBLE TO BRING ALL GRADES TO WITHIN 2' OF FINAL GRADES. THIS SHALL INCLUDE A 2" APPLICATION OF 50:50 TOPSOIL:SAND MIX FOR ALL LANDSCAPE AND AREAS TO BE SODDED.
- THE LANDSCAPE CONTRACTOR SHALL CALCULATE AND SUBMIT AN ITEMIZED PRICE FOR THE 2" APPLICATION OF 50:50 MIX FOR ALL SOD AREAS AS A REFERENCE IN THE CASE THAT THERE WOULD BE A DISCREPANCY BETWEEN SITE AND LANDSCAPE CONTRACTORS AND NOTIFY THE SITE CONTRACTOR OR PROJECT SUPERINTENDENT AS TO THIS DISCREPANCY. IT WILL THEN BE DETERMINED WHICH PARTY WILL PROVIDE THIS 2" TOPSOIL:SAND APPLICATION AND SUBSEQUENT PAYMENT.
- OTHER PLANTING SOIL MIXES TO BE ADDED, I.E. FOR TREES, PALMS, SPECIMEN PLANTS, SHRUBS AND GROUNDCOVERS SHALL BE THE RESPONSIBILITY OF THE LANDSCAPE CONTRACTOR AND BE INCLUSIVE WITH THE LANDSCAPE BID.
- CONTRACTOR SHALL COORDINATE WITH THE IRRIGATION CONTRACTOR AND LEAVE PROVISIONS FOR ALL, INCLUDING UNDERGROUND UTILITY LINE LOCATIONS DIAL 811 "NO CUTS" AS REQUIRED BY LAW.
- ALL PLANTING BEDS SHALL BE MULCHED TO A DEPTH OF 3" WITH AN APPROVED RECYCLED MULCH BY THE PRESIDING GOVERNING AGENCY. NO HEAVY METALS, I.E. ARSENIC, LEAD, ETC. ARE TO BE CONTAINED IN THE MULCH AND THE CONTRACTOR SHALL PROVIDE CERTIFICATION OR PROOF THAT ALL MULCH IS FREE OF HEAVY METALS OR SIMILAR ENVIRONMENTAL CONTAMINANTS.
- SOD SHALL BE ARGENTINE "BAHIA" OR ST. AUGUSTINE "FLORATAM" AS SHOWN ON THE PLANS, STRONGLY ROOTED, FREE FROM WEED, FUNGUS, INSECTS AND DISEASE. CONTRACTOR SHALL SOD ALL AREAS AS INDICATED ON THE PLAN OR AS DIRECTED. PAYMENT SHALL BE DETERMINED BY THE TOTAL MEASURED SODDED AREAS X THE UNIT PRICE SUBMITTED AND FIELD VERIFIED.
- SOD SHALL BE INSTALLED IN ACCORDANCE WITH THE SPECIFICATIONS AS DEFINED BY FDOT. SOD SHALL CARRY A 5-MONTH WARRANTY.
- ALL TREES, PALMS, SHRUBS AND GROUNDCOVERS SHALL CARRY A ONE-YEAR WARRANTY FROM THE DATE OF FINAL ACCEPTANCE.
- ALL TREES AND PALMS SHALL BE STAKED PER ACCEPTED STANDARDS BY THE FLORIDA NURSERYMEN & GROWERS LANDSCAPE ASSOCIATION (FNLGA). THERE SHALL BE ONE FINAL INSPECTION FOR APPROVAL BY THE PRESIDING GOVERNING AGENCY. CONTRACTOR SHALL INSURE THAT THE PLANS, DETAILS, SPECIFICATIONS AND NOTES HAVE BEEN ADHERED TO AND THAT THE LANDSCAPE AND IRRIGATION INSTALLATION IS COMPLIANT TO ALL ITEMS AS DIRECTED ON THE PLANS PRIOR TO SCHEDULING OF THE FINAL INSPECTION.
- THE PLANT LIST IS INTENDED ONLY AS AN AID TO BIDDING. ANY DISCREPANCIES FOUND BETWEEN THE QUANTITIES ON THE PLAN AND PLANT LIST, THE QUANTITIES ON THE PLAN SHALL BE HELD VALID.
- IRRIGATION SHALL PROVIDE FOR A 100% COVERAGE WITH A 100% OVERLAP. AUTOMATIC SYSTEM W/ RAIN MOISTURE SENSOR ATTACHED TO CONTROLLER. ALL FLORIDA BUILDING CODE APPENDIX "F" IRRIGATION REQUIREMENTS SHALL BE STRICTLY ADHERED TO FOR INSTALLATION AND PREVAILING WATER MANAGEMENT DISTRICT RESTRICTIONS AND REGULATIONS SHALL BE IN COMPLIANCE FOR POST-INSTALLATION WATERING SCHEDULES.
- EXISTING IRRIGATION SYSTEM (IF APPLICABLE) SHALL BE RETROFITTED TO COMPLY WITH THOSE SPECIFICATIONS AS OUTLINED ABOVE.
- CONTRACTOR SHALL PROVIDE A WATER TRUCK DURING PLANTING TO INSURE PROPER WATERING IN DURING INSTALLATION. CONTRACTOR SHALL BE RESPONSIBLE FOR CONTINUAL WATERING UNTIL FINAL ACCEPTANCE BY THE OWNER.
- ALL EXISTING TREES, PALMS AND PLANT MATERIAL TO REMAIN SHALL BE PROTECTED DURING CONSTRUCTION. CONTRACTOR SHALL INSTALL PROTECTIVE BARRIERS SUCH AS "TENAX" PROTECTIVE FENCING OR AS SHOWN ON THE DETAILS TO BE INSTALLED AT THE BEGINNING OF THE PROJECT. BARRIERS SHALL BE LOCATED TO INCLUDE THE DRIPLINE OF THE TREES, PALMS AND PLANT MATERIAL WHERE POSSIBLE. THE CONTRACTOR SHALL TAKE EXTRA CAUTION TO PREVENT ANY DAMAGE TO THE TRUNK, BRANCHES, ROOTS, ROOT ZONE AREAS AND ADJACENT GRADES.
- EXISTING TREES AND PALMS TO REMAIN SHALL BE TRIMMED PER ANSI-300 STANDARDS. SUPERVISION OF THE TRIMMING SHALL BE PERFORMED BY AN ISA-CERTIFIED ARBORIST.
- ALL EXISTING TREES AND PALMS SHALL BE "LIFTED AND THINNED" TO PROVIDE FOR AN 8' MINIMUM CLEARANCE FOR SIDEWALKS AND PEDESTRIAN WALKWAYS AND A 14' MINIMUM CLEARANCE FOR ROADWAYS, DRIVEWAYS, AND ALL VEHICULAR USE AREAS.
- REMOVAL OF ANY TREES OR PALMS WILL REQUIRE A WRITTEN "TREE REMOVAL PERMIT" FROM THE LOCAL GOVERNING AGENCY PRIOR TO REMOVAL.
- ALL PLANTINGS IN NON-IRRIGATED AREAS, I.E. RIGHTS OF WAYS, SWALES, ETC. SHALL BE WATERED-IN THOROUGHLY AND CONTINUED TO BE WATERED THROUGHOUT UNTIL C.O. ACCEPTANCE. COORDINATE WITH OWNER AND PROJECT MANAGER TO PROVIDE POST C.O. WATERING TO INSURE PLANT ESTABLISHMENT FOR A MINIMUM OF ONE YEAR AFTER CERTIFICATE OF OCCUPANCY ACCEPTANCE.

MIAMI BEACH
MIAMI BEACH
340 WEST 42ND STREET MIAMI BEACH, FLORIDA
CATON OWNER, LLC
3801 ALTON RD SUITE 138, MIAMI BEACH, FL 33140

ARCHITECT OF RECORD

ARQUITECTONICA

2808 Oak Avenue
Miami, Florida 33133
T 305.372.1812
F 305.372.1115
www.arquitectonica.com

STRUCTURAL ENGINEER:

M.E.P. ENGINEER:

MIAMI, FL 33122

LANDSCAPE ARCHITECT

MIAMI FL 33133

CIVIL ENGINEER:

MIAMI FL 33144

CONSULTANT:

CONSULTANT:

LIGHTING CONSULTANT:

SEAL / SIGNATURE / DATE

JAMES F. SOCCASH
R.L.A. # 000132
SITE PLAN SUBMITTAL

OFFICE REGISTRATION #: AA C000465

Date Revision

Issue Issue Date / For

ARQ Project No.: 3346

Drawn by:

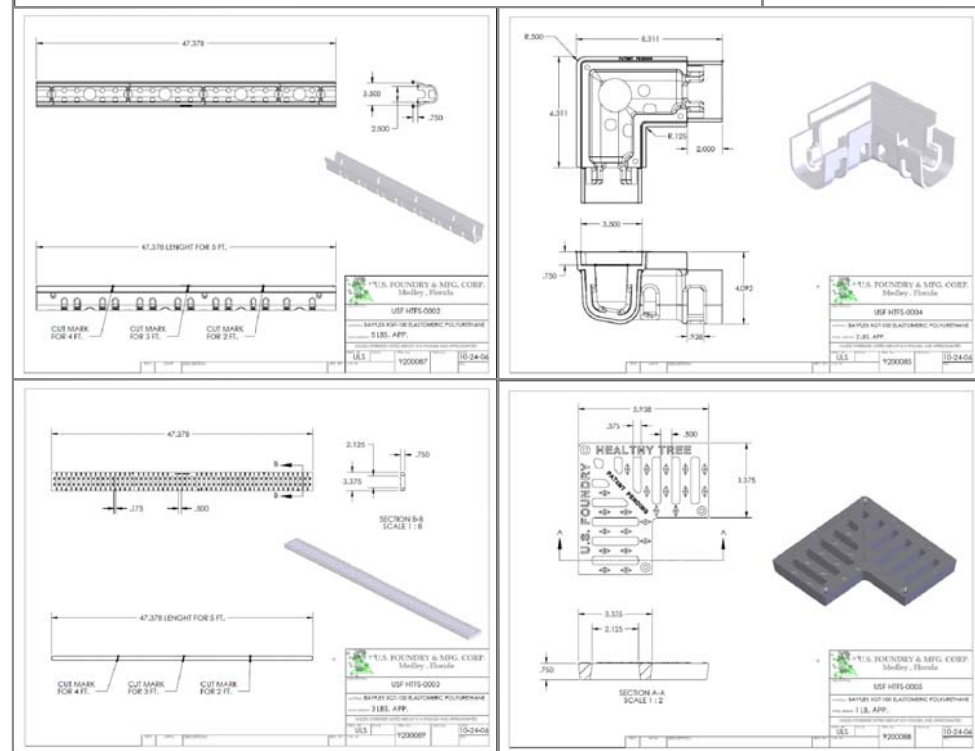
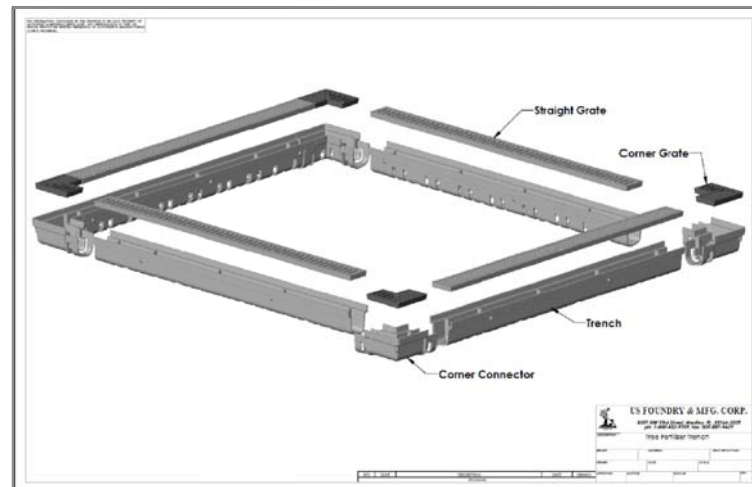
Approved by:

SHEET INDEX

NOTES, DETAILS,
SPECIFICATIONS, ETC.



L-4



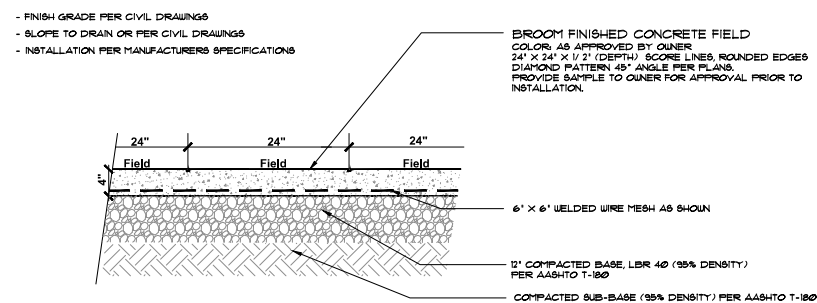
BONDED AGGREGATE "ADDAPAVE" TYPICAL DETAILS



APPROVED

JAMES F. SOCASH
RLA # 0001132
ITE PLAN SUBMITTAL

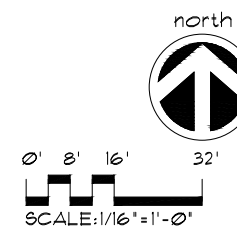
HD-1



A TYPICAL SECTION
HD-1 CONCRETE WALKWAYS

N.T.S.

W. 41st Street
Arthur Godfrey Road



GROUND LEVEL HARDSCAPE PLAN



W. 42nd Street

Sheridan Avenue

Pine Tree Drive

W. 41st Street
Arthur Godfrey Road

FINISHED GRADE PER CIVIL DRAWINGS
SLOPE TO DRAIN PER CIVIL DRAWINGS
INSTALLATION PER MANUFACTURER'S SPECIFICATIONS

FIELD:
BROOM FINISHED CONCRETE FIELD COLOR: AS
APPROVED BY OWNER 24" X 24" X 1/2" (DEPTH)
SCORE LINES, ROUNDED EDGES DIAMOND
PATTERN 45° ANGLE PER PLANS. PROVIDE SAMPLE
TO OWNER FOR APPROVAL PRIOR TO INSTALLATION.

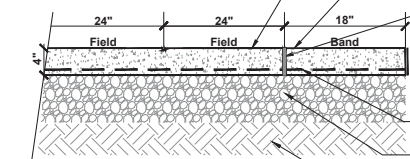
SIMULATED KEYSTONE CONCRETE BAND:
18" WIDE CONCRETE BANDING, WITH WHITE SIMULATED
KEYSTONE FINISH. PROVIDE MOCK-UP TO OWNER
FOR APPROVAL PRIOR TO INSTALLATION
(TYPICAL TO ALL).

TYPE 'C' EXPANSION JOINT (SEE CIVIL PLANS) AT
BANDING AND FIELD JOINTS (TYPICAL). SCORE LINES:
TYPE 'B' SAWED JOINTS (SCORE LINES) AT 45 DEGREE
ANGLE EXPANSION JOINTS: TYPE 'A' OPEN JOINTS
PER CIVIL DUGS. AT 30' INTERVALS OR AS DIRECTED
BY THE CIVIL ENGINEER.

6" X 6" WELDED WIRE MESH AS SHOWN

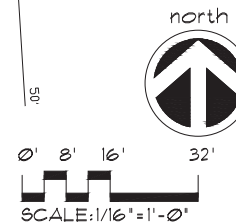
COMPACTED BASE, LBR 40 (95% DENSITY)
PER AASHTO T-100

COMPACTED SUB-BASE, (95% DENSITY)
PER AASHTO T-100



A TYPICAL SECTION WALKWAYS:
CONCRETE WITH BANDING AND SCORE LINES

N.T.S.



**GROUND LEVEL
HARDSCAPE PLAN**

MIAMI BEACH
MIAMI BEACH
340 WEST 42ND STREET MIAMI BEACH, FLORIDA
CATON OWNER, LLC
3821 ALTON RD SUITE 138, MIAMI BEACH, FL 33140

ARCHITECT OF RECORD
ARQUITECTONICA
2900 Oak Avenue
Miami, Florida 33133
T 305.372.1812
F 305.372.1115
www.arquitectonica.com

STRUCTURAL ENGINEER:

M.E.P. ENGINEER:

MIAMI, FL 33122

LANDSCAPE ARCHITECT

MIAMI FL 33133

CIVIL ENGINEER:

MIAMI FL 33144

CONSULTANT:

CONSULTANT:

LIGHTING CONSULTANT:

SEAL / SIGNATURE / DATE

JAMIE F. SOCCASH
R.L.A. # 000132
SITE PLAN SUBMITTAL

OFFICE REGISTRATION #: AA C000465

Date Revision

Issue Issue Date / For

ARQ Project No.: 3346

Drawn by:

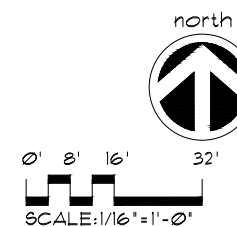
Approved by:

SHEET INDEX

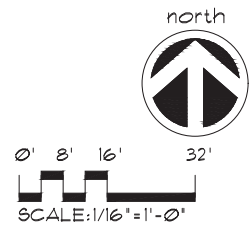
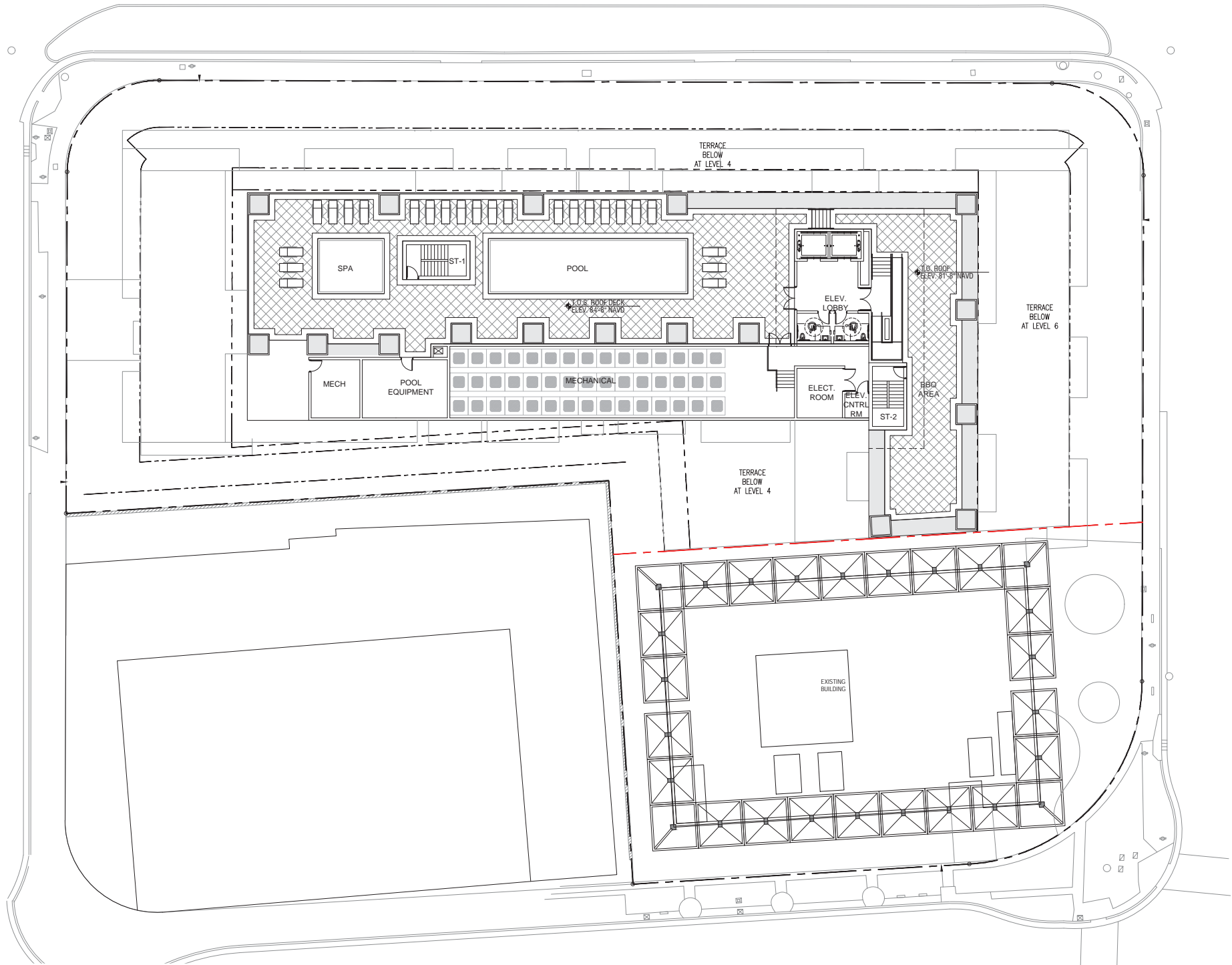
HD-1

© 2008 ARQUITECTONICA INTERNATIONAL, INC.

HD-2



ROOF LEVEL HARDSCAPE PLAN



ROOF LEVEL HARDSCAPE PLAN



MIAMI BEACH
MIAMI BEACH
340 WEST 42ND STREET MIAMI BEACH, FLORIDA
CATON OWNER, LLC
3821 ALTON RD SUITE 138, MIAMI BEACH, FL 33140

ARCHITECT OF RECORD
ARQUITECTONICA
2308 Oak Avenue
Miami, Florida 33133
T 305.372.1812
F 305.372.1115
www.arquitectonica.com

STRUCTURAL ENGINEER:

M.E.P. ENGINEER:

MIAMI, FL 33122

LANDSCAPE ARCHITECT

MIAMI FL 33133

CIVIL ENGINEER:

MIAMI FL 33144

CONSULTANT:

CONSULTANT:

LIGHTING CONSULTANT:

SEAL / SIGNATURE / DATE

JAMIE F. SOCCASH
R.L.A. # 000132
SITE PLAN SUBMITTAL

OFFICE REGISTRATION #: AA C000465

Date Revision

Issue Issue Date / For