



A. VIEW FROM OCEAN DRIVE. TALL MONTGOMERY PALMS + FISHTAILS IN POOR CONDITION TO BE REMOVED



B. VIEW OF PLANTER IN SOUTHWEST CORNER OF COURTYARD. TALL DOUBLE PALM + TROPICALS



C. VIEW FROM CORAL STEPS LOOKING SOUTH. TALL MONTGOMERY + FISHTAIL PALMS TO BE REMOVED



D. VIEW FROM SOUTHEAST PAVILION LOOKING NORTH TO PLANTERS FLANKING STEPS. FIDDLELEAF FIG TREES + TALL PALMS



E. VIEW FROM WEST SIDE OF COURTYARD LOOKING EAST TO PLANTER IN FRONT OF WALL THAT IS TO BE REMOVED.



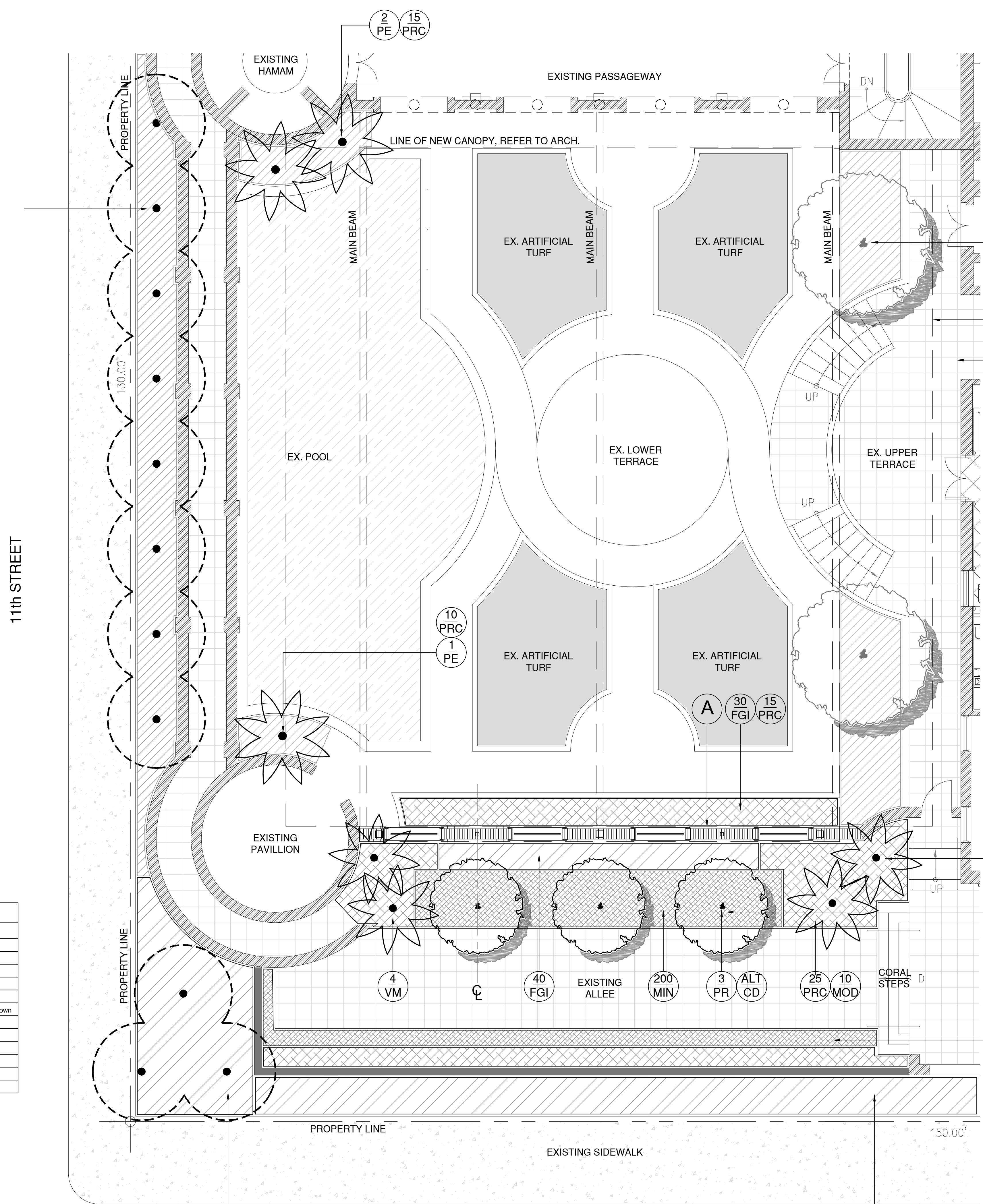
F. VIEW FROM WEST SIDE OF COURTYARD LOOKING EAST TO PLANTER IN FRONT OF PAVILION IN SOUTH EAST CORNER

EXISTING MEDJOOOL DATE PALMS + FICUS GREEN ISLAND GROUNDCOVER TO REMAIN TYPICAL. FILL IN WITH NEW FICUS GREEN ISLAND AS NECESSARY. TO BE MAINTAINED 24" IN HEIGHT MAX

LANDSCAPE PLAN LEGEND

- (A) 12" WALL TO MATCH PREVIOUS EXISTING. EXISTING DECORATIVE METAL 12" WALL TO MATCH PREVIOUS EXISTING. REFER TO ARCHITECTURE FOR MORE INFO
- (B) FOOTPRINT OF NEW CANOPY, REFER TO ARCHITECTURE

PLANT LIST - VILLA CASA CASOURINA					
KEY	QTY.	NATIVE	COMMON NAME	BOTANICAL NAME	HEIGHT, SPECIFICATION, & NOTES
TREES					
CD	ALT	YES	PIGEON PLUM TREE	Coccoloba diversifolia	100 gal, 14 -16' ht, 8' spr, 3-4" cal, matched, symmetrical
PR	3	NO	BAY RUM TREE	Pimenta racemosa	100 gal, 14 -16' ht, 8' spr, 3-4" cal, matched, symmetrical
PALMS					
PE	3	NO	ALEXANDER PALM	Ptychosperma elegans	65 gallon, 15' height min.
VM	4	NO	MONTGOMERY PALM	Veitchia montgomeryana	Field grown, 25' overall height, Florida Fancy, trunks as shown
SHRUBS					
FGI	260	NO	FICUS GREEN ISLAND	Ficus macrocarpa 'Green Island'	3 gallon, full, space 18" on center
GROUNDCOVERS, TROPICALS + ACCENTS					
MIN	280	NO	JASMINE MINIMA	Trachelospermum asiaticum 'Minima'	1 gallon, full, 12" on center
MOD	10	NO	SWISS CHEESE PLANT	Monstera deliciosa	7 gallon, full, 30" on center
PRC	65	NO	PHILODENDRON 'ROJO CONGO'	Same	3 gallon, full, 18" on center



FIDDLELEAF FIG TREE TO REMAIN, TYP

(B)

ALL EXISTING HARDSCAPE ON SITE TO REMAIN. SEE ARCHITECTURE FOR MORE INFO

MONTGOMERY PALMS BOOKEND THE FORMAL + SYMMETRICAL CENTER PLANTING.

FORMAL CENTER PLANTING CONSIST OF CYLINDRICAL BAY RUM TREES, FICUS GREEN ISLAND + JASMINE MINIMA. NEW FORMAL PLANTING WILL ACCENTUATE VIEWS TO ARCHITECTURAL FEATURES

MIXTURE OF LOW EVERGREEN GROUNDCOVERS NOT TO EXCEED 24" IN HEIGHT

EXISTING MEDJOOOL DATE PALMS AND NEW FICUS GREEN ISLAND

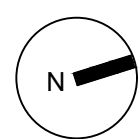
OCEAN DRIVE

NEW FICUS GREEN ISLAND GROUNDCOVER TO MATCH EXISTING ON 11th STREET. TO BE MAINTAINED 24" IN HEIGHT MAX

150 FGI



LANDSCAPE PLAN



SHEET NO
L2.0

DATE
11.17.2017 1st Submittal
12.08.2017 2nd Submittal

CHRISTOPHER CAWLEY, RLA
Florida License LA 666786



CD / PIGEON PLUM TREE /
ALTERNATE



PR / BAY RUM TREE



VM / MONTGOMERY PALMS



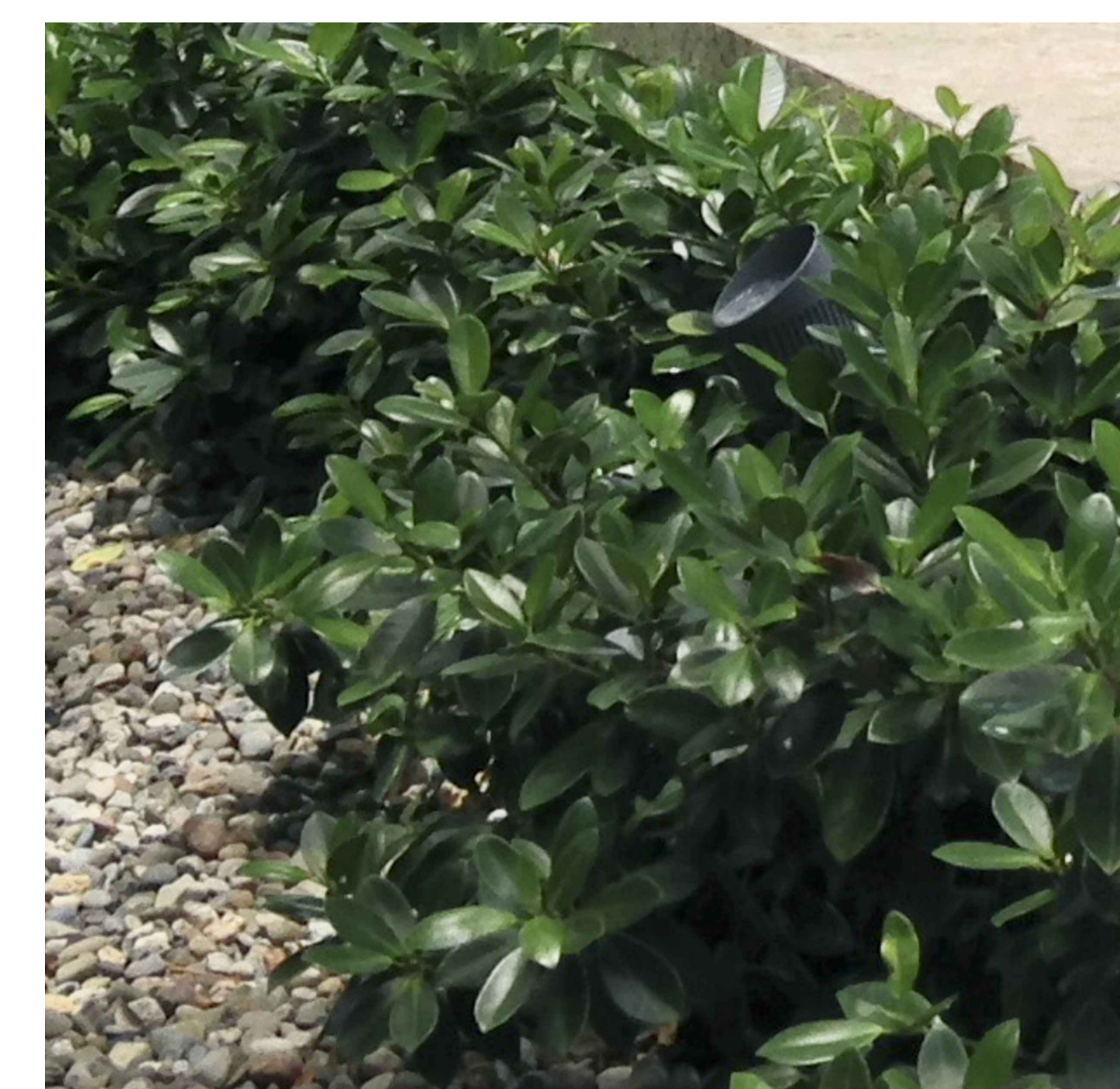
MOD / MONSTERA



MIN / JASMINE MINIMA



PRC / PHILODENDRON ROJO CONGO



FGI / FICUS GREEN ISLAND