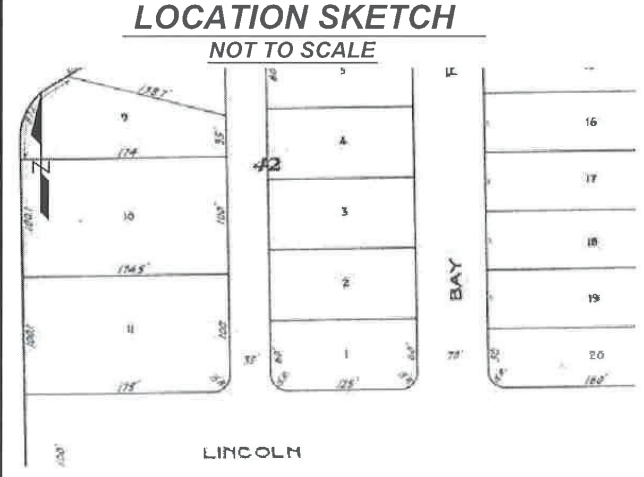


TREE LEGEND			
TREE TYPE	DIAMETER	HEIGHT	CANOPY
CARPENTARIA PALM	0.7'	20'	10'
PALM	0.4'	6'	8'
CARPENTARIA PALM	0.7'	16'	10'
CARPENTARIA PALM	0.7'	20'	10'
CARPENTARIA PALM	0.7'	16'	10'
CARPENTARIA PALM	0.7'	13'	10'
CARPENTARIA PALM	0.7'	12'	10'
CARPENTARIA PALM	0.7'	20'	10'
CARPENTARIA PALM	0.7'	30'	14'
CARPENTARIA PALM	0.7'	30'	14'
CARPENTARIA PALM	0.7'	20'	12'
CARPENTARIA PALM	0.7'	16'	12'
CARPENTARIA PALM	0.7'	18'	12'
CARPENTARIA PALM	0.7'	18'	12'
CARPENTARIA PALM	0.7'	18'	12'
CARPENTARIA PALM	0.7'	15'	10'
CARPENTARIA PALM	0.7'	18'	12'
CARPENTARIA PALM	0.7'	16'	12'
CARPENTARIA PALM	0.7'	18'	10'

FLOOD ZONE: AE
MAP & PANEL= 12086C0317
COMMUNITY No.: 120651
SUFFIX: L
DATE OF FIRM: 09-11-2009
BASE ELEV.= +8.00 NGVD 1929
BM= FDOT 87 87 11 PN 03- CITY OF MIAMI BEACH
ELEV= 1.97 NAVD 1988 = 3.52 NGVD 1929
LEGAL DESCRIPTION:
LOT 1, BLOCK 42, "BELLEVIEW SUBDIVISION", ACCORDING TO THE PLAT THEREOF AS RECORDED IN PLAT BOOK 6, PAGE 114, OF THE PUBLIC RECORDS OF MIAMI-DADE COUNTY, FLORIDA.



SURVEYOR'S NOTES:

- 1) NOT VALID UNLESS SIGNATURE IS EMBOSSED WITH THE REGISTERED LAND SURVEYOR'S SEAL.
- 2) LEGAL DESCRIPTION PROVIDED BY OTHERS.
- 3) PROPERTIES SHOWN HEREON WERE NOT ABSTRACTED FOR EASEMENTS OR OTHER RECORDED ENCUMBRANCES NOT SHOWN ON THE PROPERTY PLAT OF RECORD.
- 4) MEASUREMENTS TO WOOD FENCES ARE TO OUTSIDE OF WOOD.
- 5) UNDERGROUND UTILITIES, FOUNDATIONS, OR OTHER IMPROVEMENTS, IF ANY, WERE NOT LOCATED.
- 6) ELEVATIONS, IF SHOWN ARE BASED ON NATIONAL GEODETIC VERTICAL DATUM 1929.
- 7) FENCE OWNERSHIP NOT DETERMINED UNLESS OTHERWISE NOTED.
- 8) MEASUREMENTS TO WIRE FENCES ARE TO CENTER OF WIRE.
- 9) WALL MEASUREMENTS ARE TO/FROM FACE OF WALL.
- 10) DRAWING DISTANCE BETWEEN WALLS AND/OR FENCES AND PROPERTY LINES MAY BE EXAGGERATED FOR CLARITY.
- 11) FLOOD ZONE INFORMATION WAS DERIVED FROM FEDERAL EMERGENCY MANAGEMENT AGENCY FLOOD INFORMATION RATE MAPS
- 12) BEARINGS IF ANY SHOWN ARE BASED ON ASSUMED PLAT MERIDIAN AT: NORTH RIGHT OF WAY


OF LINCOLN ROAD = WEST

NOT VALID WITHOUT THE SIGNATURE AND THE ORIGINAL RAISED SEAL OF A FLORIDA LICENSED SURVEYOR AND MAPPER.

A BOUNDARY SURVEY

I HEREBY CERTIFY THAT THIS BOUNDARY SURVEY WAS MADE UNDER MY SUPERVISION AND MEETS STANDARDS OF PRACTICE SET FORTH BY THE FLORIDA BOARD OF PROFESSIONAL SURVEYORS AND MAPPERS IN CHAPTER 5J-17.050 THROUGH 5J-17.052, FLORIDA ADMINISTRATIVE CODE, PURSUANT TO SECTION 472.027, FLORIDA STATUTES, AND, THAT THE SKETCH HEREON IS TRUE AND CORRECT TO THE BEST OF MY KNOWLEDGE AND BELIEF. SUBJECT TO NOTES AND NOTATIONS SHOWN HEREON.

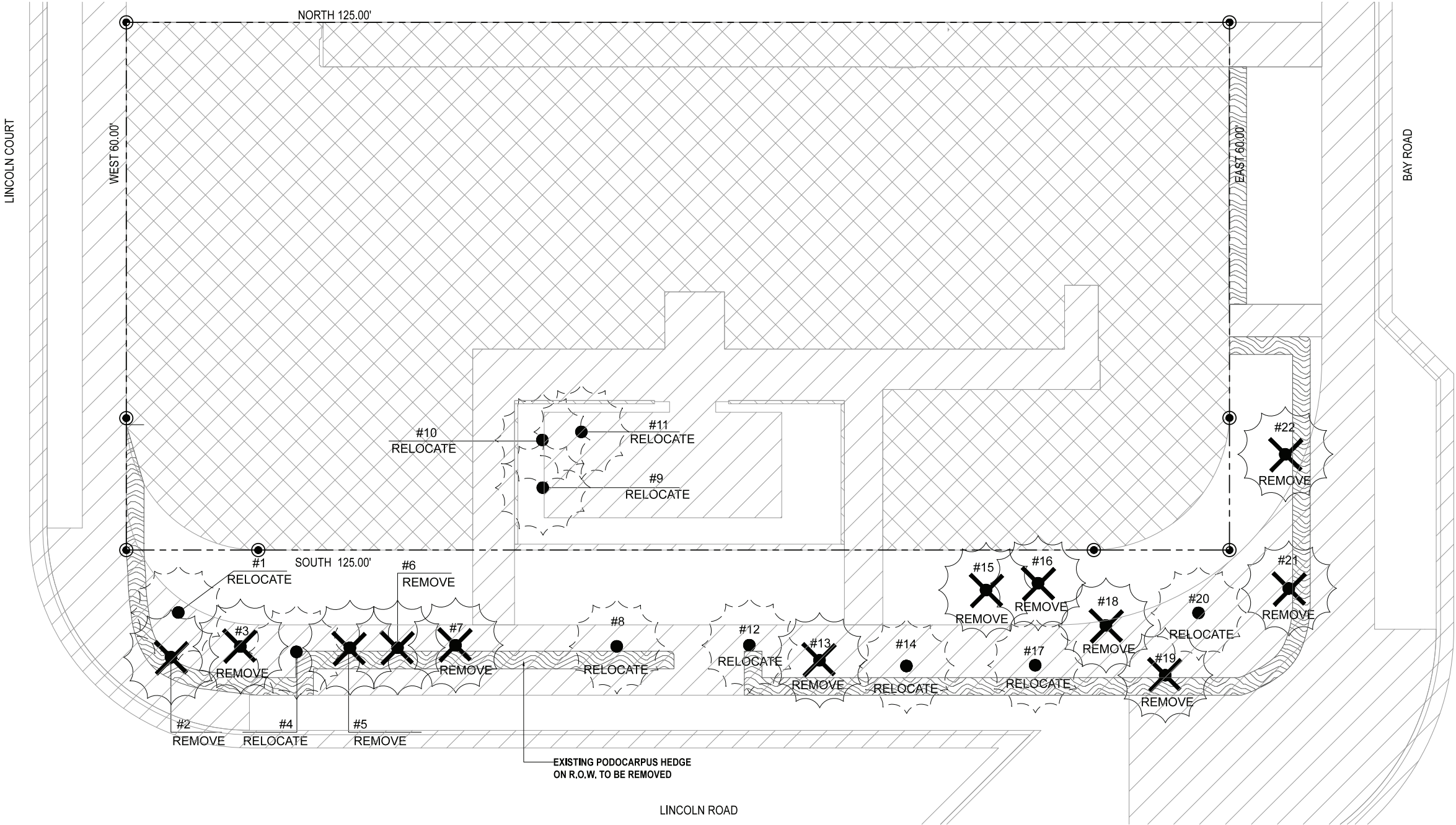
FRANCISCO F. FAJARDO
FLORIDA PROFESSIONAL SURVEYOR AND MAPPER
REGISTRATION NO. 4767.



PROFESSIONAL SURVEYING AND MAPPING
LANNES AND GARCIA, INC.
LB # 2098
FRANCISCO F. FAJARDO PSM # 4767 (QUALIFIER)
2700 SW 37th AVENUE,
MIAMI, FLORIDA 33133
PH (305) 666-7909 FAX (305) 442-2530

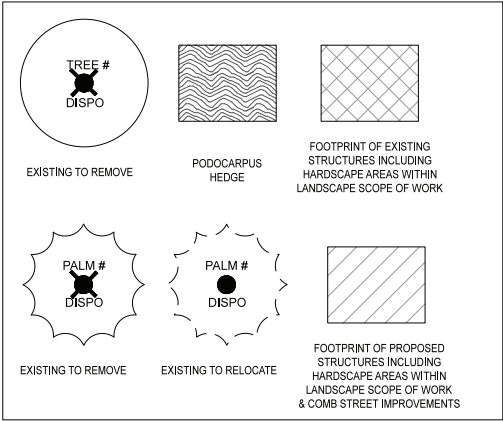
FIELD DATE: 03/07/2017	SCALE: 1" = 20'	DRAWN BY: J.J.	DWG. No.: 264876C
------------------------	-----------------	----------------	-------------------





1 TREE DISPOSITION PLAN
3/16" = 1'-0"

TREE DISPOSITION | GRAPHIC LEGEND

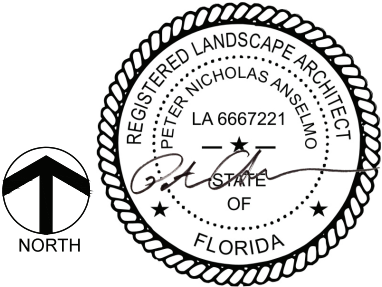


TREE DISPOSITION | NOTES

1. EXISTING TREES DESIGNATED TO REMAIN SHALL BE PROTECTED DURING ALL CONSTRUCTION PHASES. ANY TREES OR SHRUBS DESIGNATED TO REMAIN, WHICH ARE SCARRED OR DESTROYED WILL BE REPLACED AT THE CONTRACTOR'S EXPENSE, WITH SIMILAR SPECIES, SIZE AND QUALITY.
2. REFER TO AND COORDINATE WITH TREE DISPOSITION LIST.
3. OBTAIN ALL REQUIRED TREE REMOVAL PERMITS PRIOR TO THE COMMENCEMENT OF WORK.
4. GENERAL CONTRACTOR SHALL BE RESPONSIBLE TO VERIFY ALL EXISTING TREES PRIOR TO COMMENCEMENT OF WORK.
5. GENERAL CONTRACTOR SHALL BE RESPONSIBLE TO PROTECT ALL ADJACENT PORTIONS OF THE SITE AND BUILDING NOT PART OF DISPOSITION SCOPE OF WORK.
6. GENERAL CONTRACTOR SHALL BE RESPONSIBLE TO PROPERLY SECURE ALL PORTIONS OF THE SITE DURING ALL DEMOLITION PHASES.
7. GENERAL CONTRACTOR SHALL BE RESPONSIBLE TO OBTAIN PERMIT REQUIRED FOR TEMPORARY FENCING.
8. LANDSCAPE CONTRACTOR TO PROVIDE TEMPORARY IRRIGATION AS NEEDED, REFER TO LANDSCAPE PLANS FOR FURTHER INFORMATION.
9. TREES SHOWN IN GREY ARE NOT IN LANDSCAPE SCOPE OF WORK, SHOWN FOR REFERENCE ONLY.

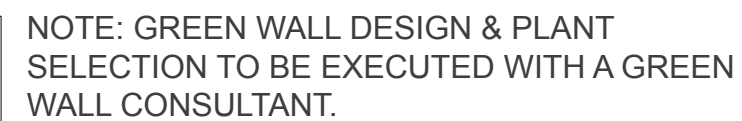
0' 5' 10' 15' 20'

TO THE BEST OF OUR KNOWLEDGE, THESE PLANS COMPLY WITH ALL APPLICABLE BUILDING AND ZONING CODES



NFI - HOTEL THE GAYTHERING: 2017.09.07									
KEY #	ABRV.	BOTANICAL NAME	COMMON NAME	SIZE			DISPOSITION		
				DBH. (FT.)	HT. (FT.)	SPD. (FT.)	REMAIN	REMOVE	RELOCATE ON SITE
1	CAA	<i>Carpentaria acuminata</i>	Carpentaria Palm Tree	0.7'	20'	10'			X
2	CAA	<i>Carpentaria acuminata</i>	Carpentaria Palm Tree	0.4'	6'	8'		X	
3	CAA	<i>Carpentaria acuminata</i>	Carpentaria Palm Tree	0.7'	16'	10'		X	
4	CAA	<i>Carpentaria acuminata</i>	Carpentaria Palm Tree	0.7'	20'	10'			X
5	CAA	<i>Carpentaria acuminata</i>	Carpentaria Palm Tree	0.7'	16'	10'		X	
6	CAA	<i>Carpentaria acuminata</i>	Carpentaria Palm Tree	0.7'	13'	10'		X	
7	CAA	<i>Carpentaria acuminata</i>	Carpentaria Palm Tree	0.7'	12'	10'		X	
8	CAA	<i>Carpentaria acuminata</i>	Carpentaria Palm Tree	0.7'	20'	10'			X
9	CAA	<i>Carpentaria acuminata</i>	Carpentaria Palm Tree	0.7'	30'	14'			X
10	CAA	<i>Carpentaria acuminata</i>	Carpentaria Palm Tree	0.7'	30'	14'			X
11	CAA	<i>Carpentaria acuminata</i>	Carpentaria Palm Tree	0.7'	30'	14'			X
12	CAA	<i>Carpentaria acuminata</i>	Carpentaria Palm Tree	0.7'	20'	12'			X
13	CAA	<i>Carpentaria acuminata</i>	Carpentaria Palm Tree	0.7'	16'	12'		X	
14	CAA	<i>Carpentaria acuminata</i>	Carpentaria Palm Tree	0.7'	18'	12'			X
15	CAA	<i>Carpentaria acuminata</i>	Carpentaria Palm Tree	0.7'	18'	12'		X	
16	CAA	<i>Carpentaria acuminata</i>	Carpentaria Palm Tree	0.7'	18'	12'		X	
17	CAA	<i>Carpentaria acuminata</i>	Carpentaria Palm Tree	0.7'	18'	12'			X
18	CAA	<i>Carpentaria acuminata</i>	Carpentaria Palm Tree	0.7'	18'	10'		X	
19	CAA	<i>Carpentaria acuminata</i>	Carpentaria Palm Tree	0.7'	15'	10'		X	
20	CAA	<i>Carpentaria acuminata</i>	Carpentaria Palm Tree	0.7'	18'	12'			X
21	CAA	<i>Carpentaria acuminata</i>	Carpentaria Palm Tree	0.7'	16'	12'		X	
22	CAA	<i>Carpentaria acuminata</i>	Carpentaria Palm Tree	0.7'	18'	10'		X	
SUMMARY									
Total Number of on site and R.O.W Trees/Palms: 22									
Total Number of Trees / Palms to Remain: 0									
Total Number of Trees / Palms to Remove: 12									
Total Number of Trees / Palms to Relocate: 10									





NATURALFICIAL, INC. HOTEL GAYTHERING PLANT LIST: 2017.11.20								
QTY	ABRV.	BOTANICAL NAME	COMMON NAME	SPECIFICATIONS	FL. NATIVE		DROUGHT TOLERANT	
					YES	NO	YES	NO
TREES								
9	CBR	Calophyllum brasiliense	Brazilian Beautyleaf	Min. 4' CT, 12' HT., 3" caliper		X	X	
PALMS								
1	CMI	Coccothrinax Hybrid	Hybrid Miraguama Palm	8' HT.				
SHRUBS								
4	MF	Myrcianthes fragrans	Simpson Stopper	15G	X		X	
9	M2	Myrcianthes fragrans	Simpson Stopper	7G	X		X	
ACCENTS								
6	RC	Philodendron 'Rojo Congo'	Rojo Congo	7G		X	X	
GROUNDCOVERS								
206	MS	Microsorium scolopendrium	Wart Fern	3G @ 15" OC	X		X	





Calophyllum brasiliense
Brazilian Beautyleaf



Coccothrinax miraguama 'Hybrid'



Carpentaria acuminata
Carpentaria Palm (Existing)



Myrcianthes fragans
Simpson Stopper



Microsorium scolopendrium
Wart Fern



Philodendron 'Rojo Congo'
Rojo Congo

