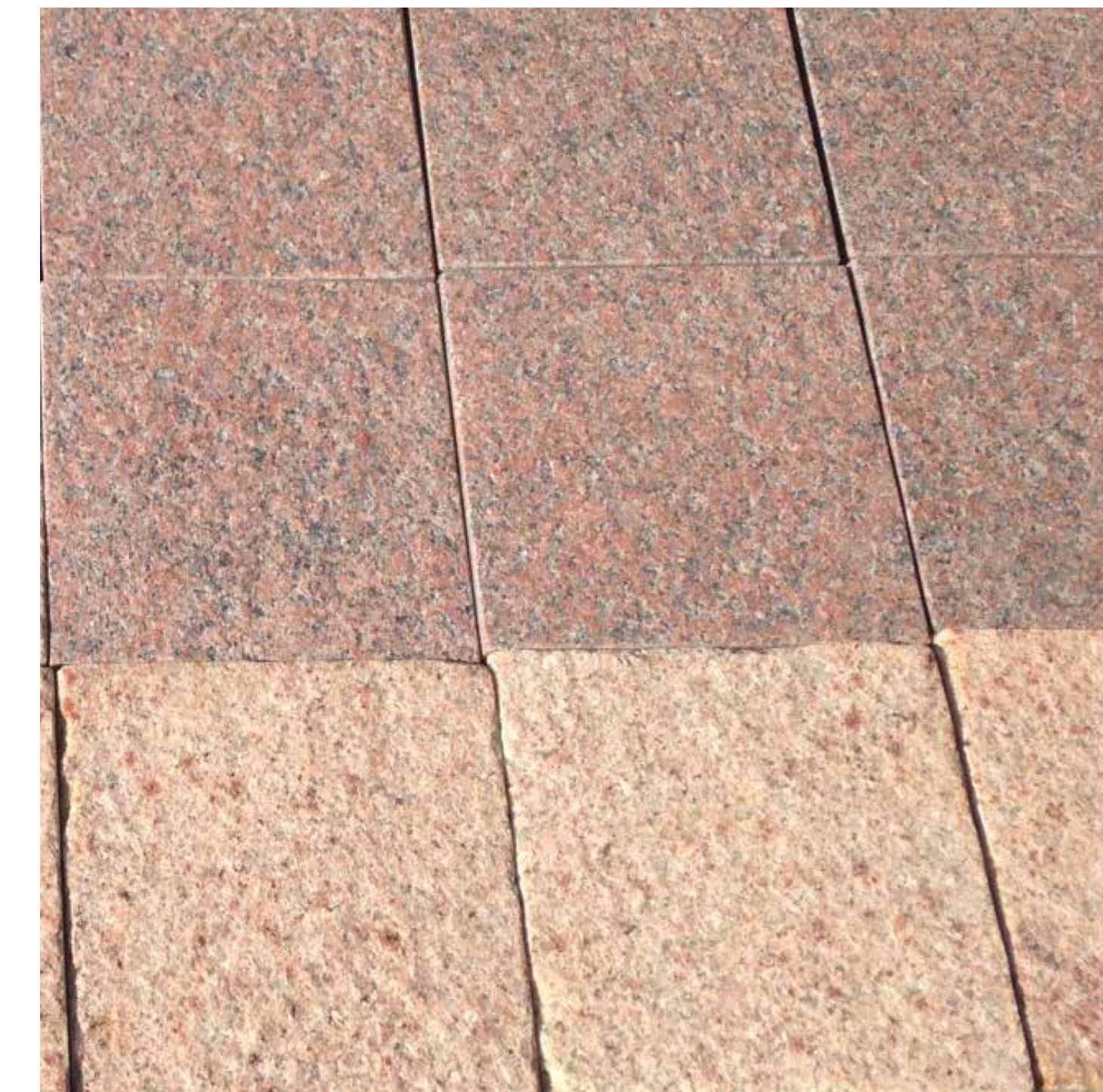


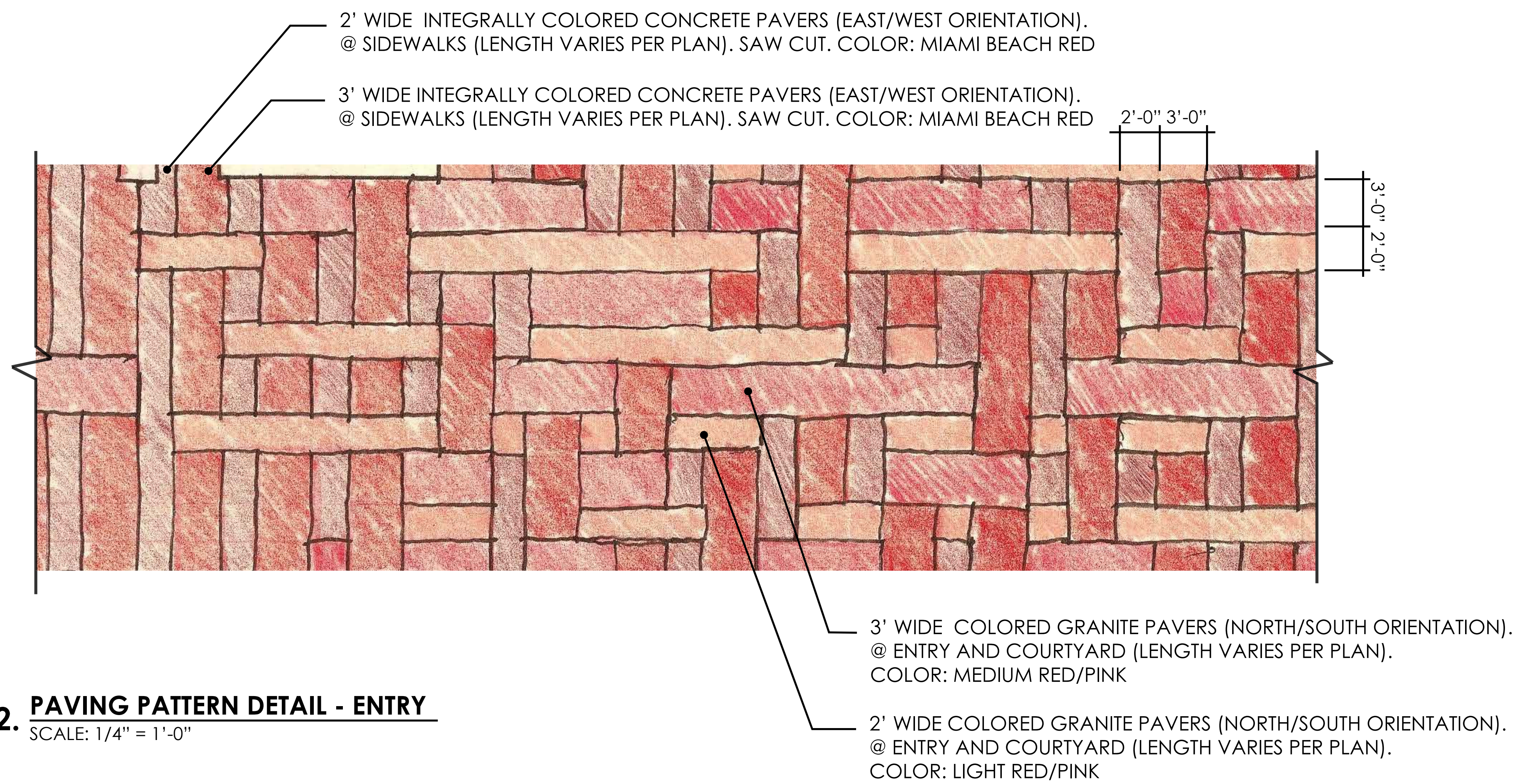
1. PAVING PATTERN DETAIL - BREEZEWAY
SCALE: 1/4" = 1'-0"



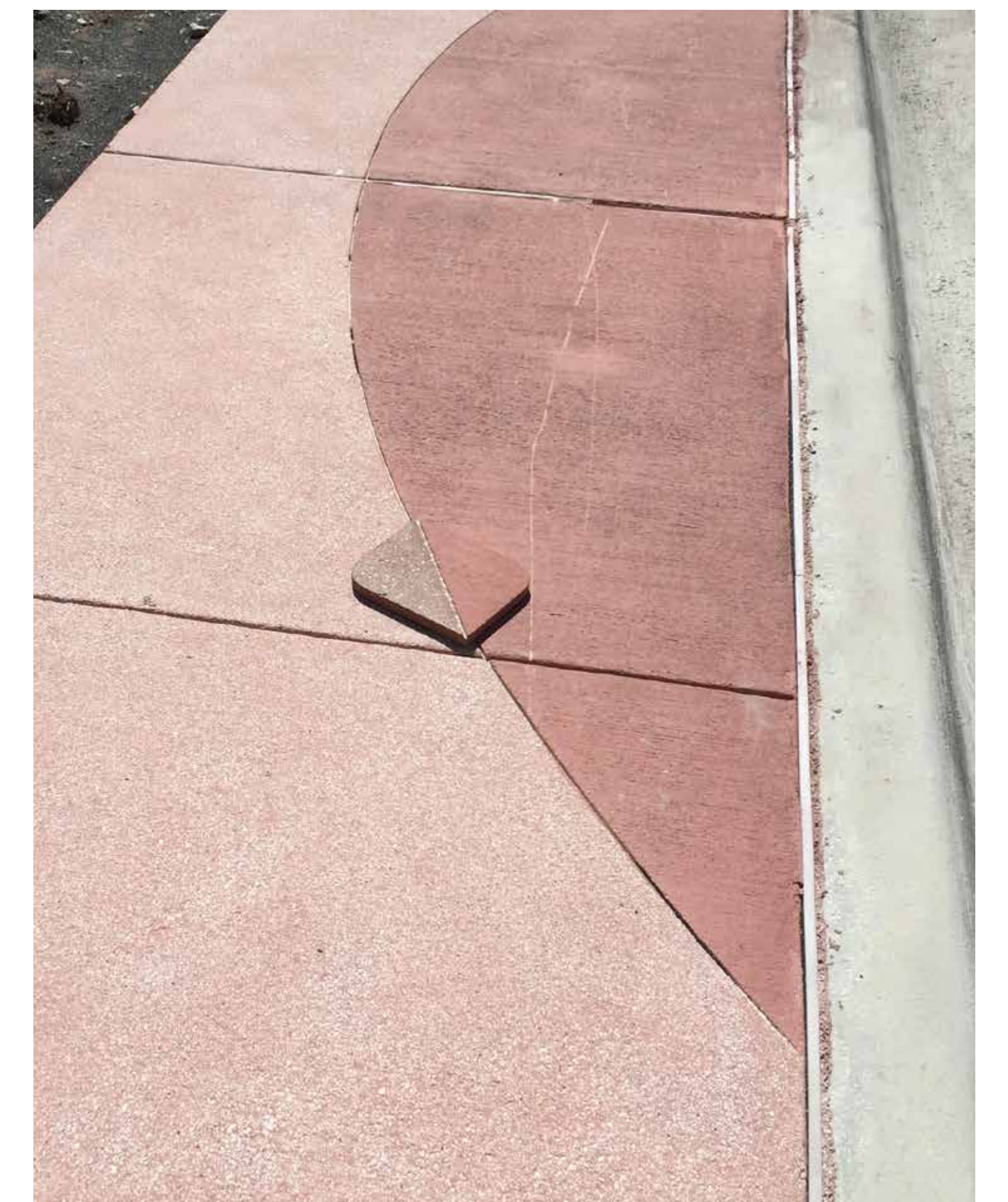
**3. MATERIAL SAMPLE IMAGES
RED/PINK GRANITE**



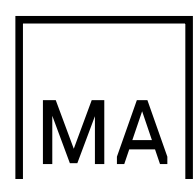
**4. MATERIAL IMAGES - "MIAMI BEACH RED"
INTEGRALLY COLORED CONCRETE**



2. PAVING PATTERN DETAIL - ENTRY
SCALE: 1/4" = 1'-0"



**5. INTEGRALLY COLORED CONCRETE
"MIAMI BEACH RED"
WITH SAWCUT - EXAMPLE**



Morris Adjmi Architects
www.ma.com

O'Brien Lighting Inc

Washington
Squared LLC

Ken Fulk

Nichols Brosch Wurst
Wolfe & Associates

Raymond Jungles inc.

601-685 Washington Ave.
Miami Beach, FL

L-12 Paving Pattern Details

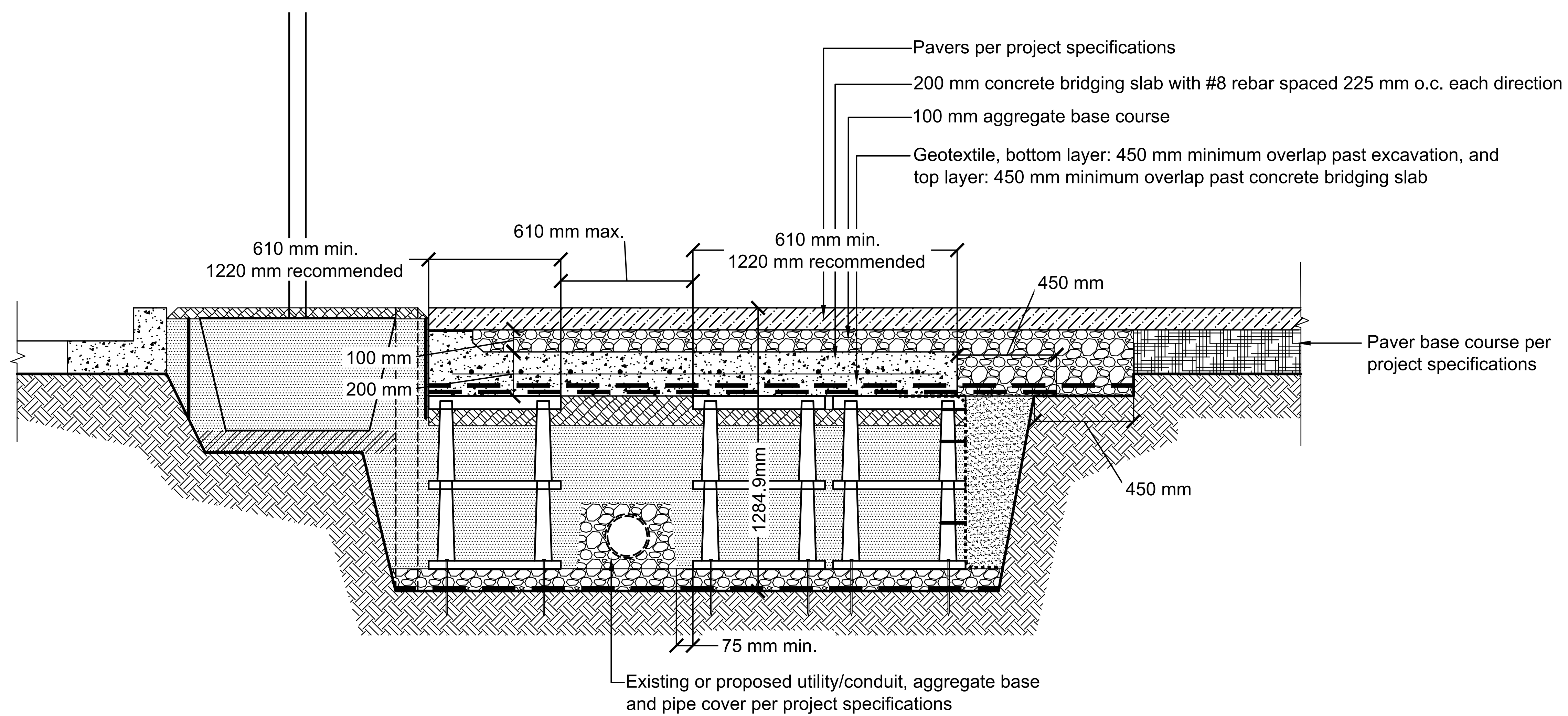
Historic Preservation Board Interim Resubmittal / 17 March 2016

DRAWINGS NOT FOR CONSTRUCTION

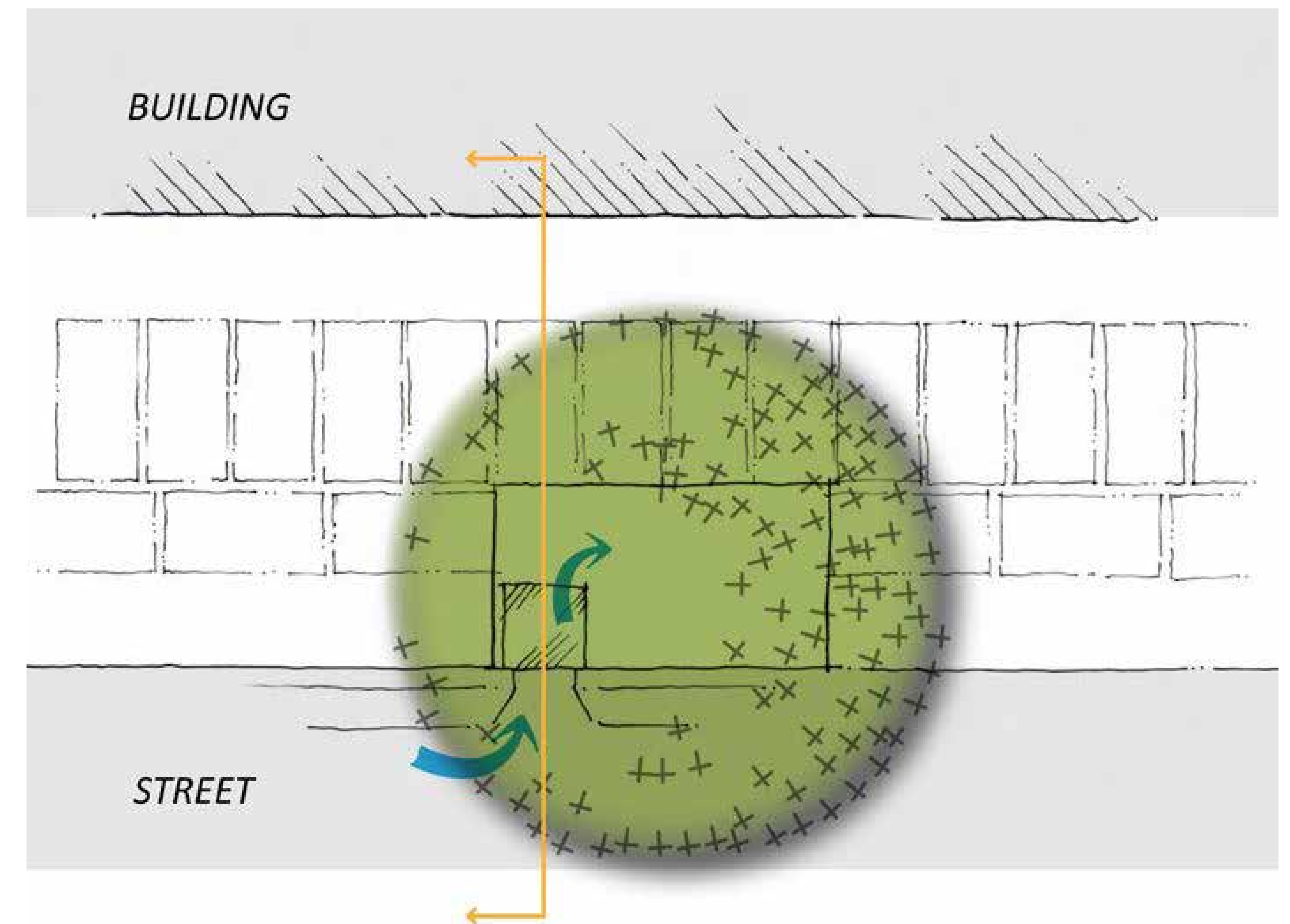
HISTORIC PRESERVATION BOARD INTERIM RESUBMITTAL

601-685 Washington Avenue
Miami Beach, FL | March 17, 2016





SILVA CELL DETAIL - TYPICAL
N.T.S.



SILVA CELL PLAN - TYPICAL
N.T.S.



Morris Adjmi Architects
www.ma.com
O'Brien Lighting Inc

Washington
Squared LLC
Ken Fulk

Nichols Brosch Wurst
Wolfe & Associates
Raymond Jungles inc.

601-685 Washington Ave.
Miami Beach, FL

L-13 Silva Cell Details

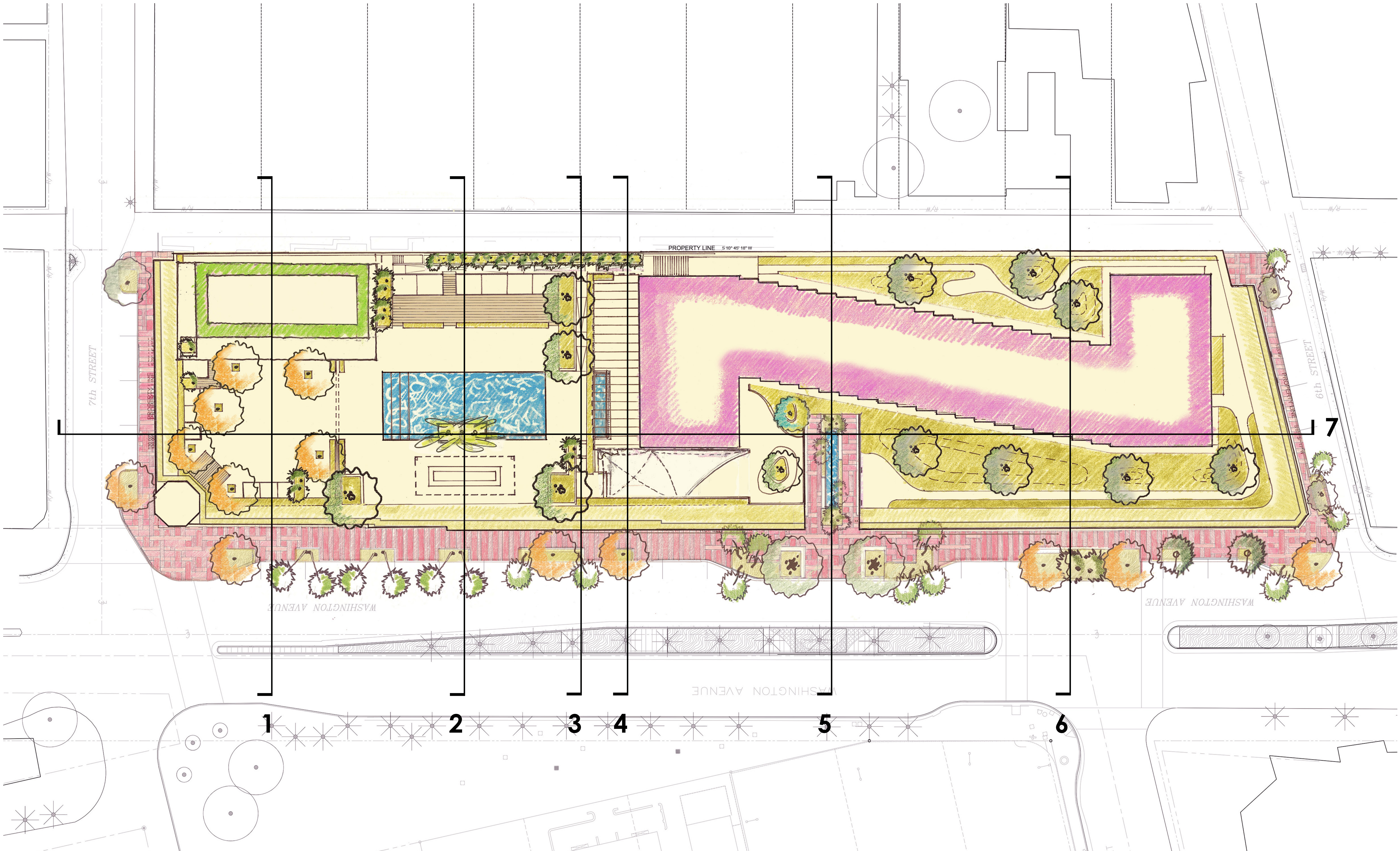
Historic Preservation Board Interim Resubmittal / 17 March 2016

DRAWINGS NOT FOR CONSTRUCTION

HISTORIC PRESERVATION BOARD INTERIM RESUBMITTAL

601-685 Washington Avenue
Miami Beach, FL | March 17, 2016





Morris Adjmi Architects
www.ma.com

O'Brien Lighting Inc

Washington
Squared LLC

Ken Fulk

Nichols Brosch Wurst
Wolfe & Associates

Raymond Jungles inc.

601-685 Washington Ave.
Miami Beach, FL

L-14 Section Key Plan

Historic Preservation Board Interim Resubmittal / 17 March 2016

DRAWINGS NOT FOR CONSTRUCTION

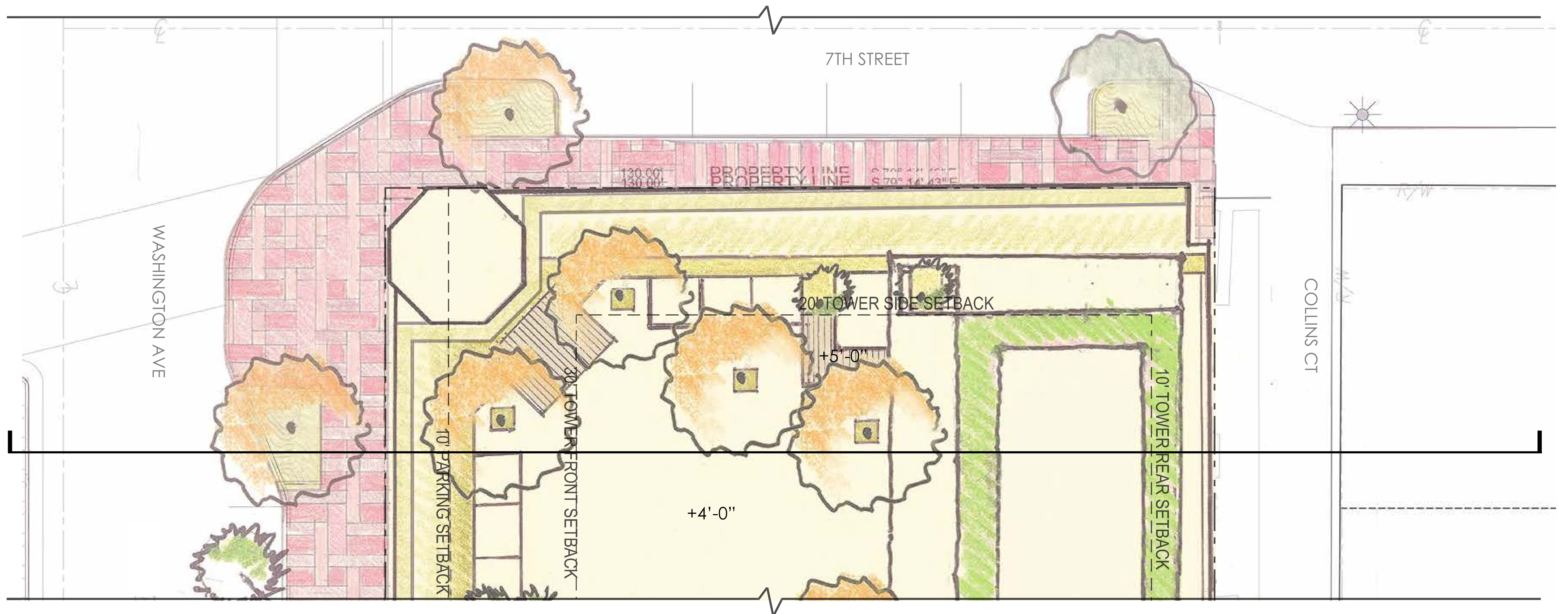


0 6' 12' 32'
SCALE: 1/16" = 1'-0"
@ 30" X 42"

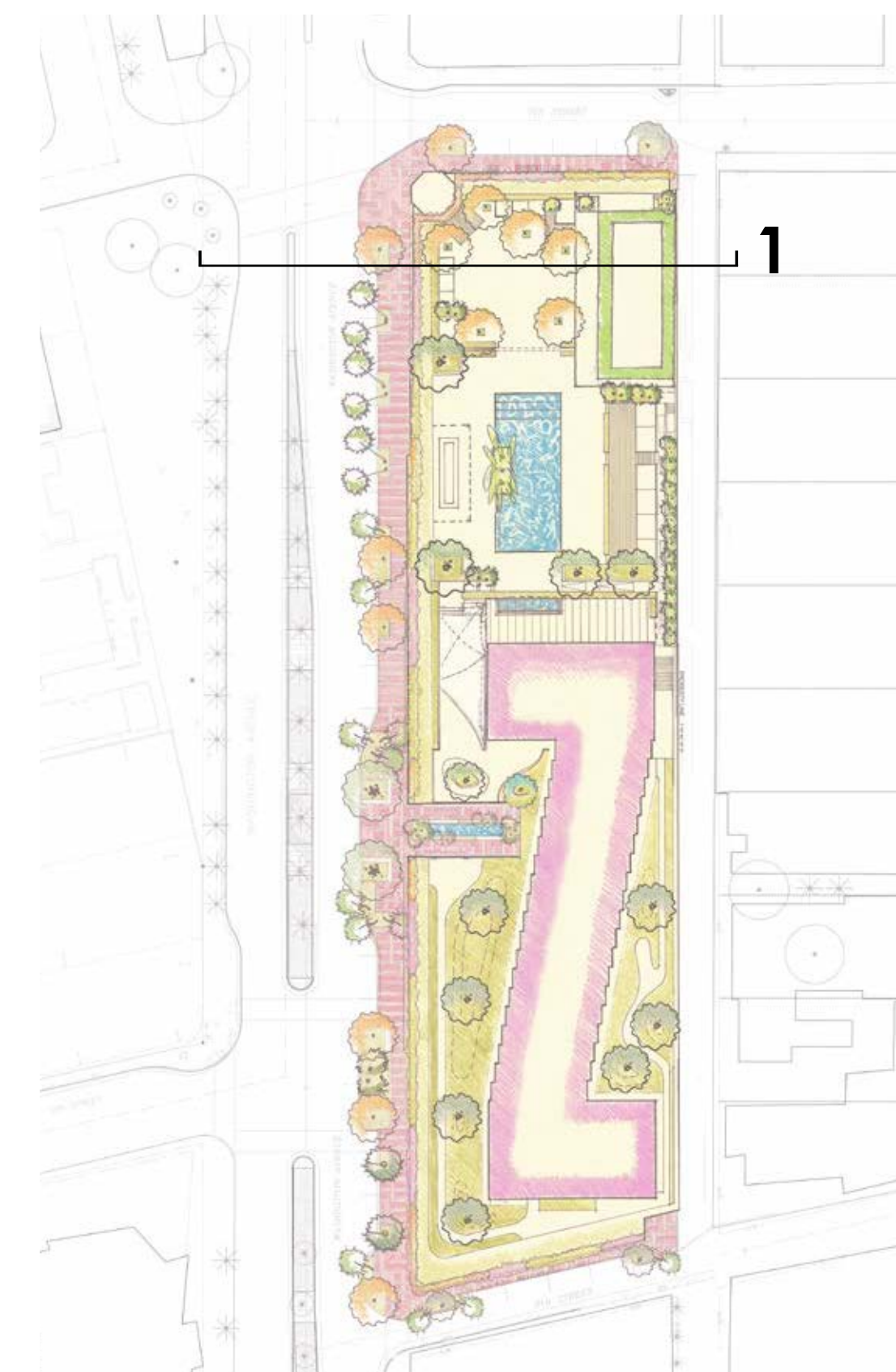
HISTORIC PRESERVATION BOARD INTERIM RESUBMITTAL

601-685 Washington Avenue
Miami Beach, FL | March 17, 2016

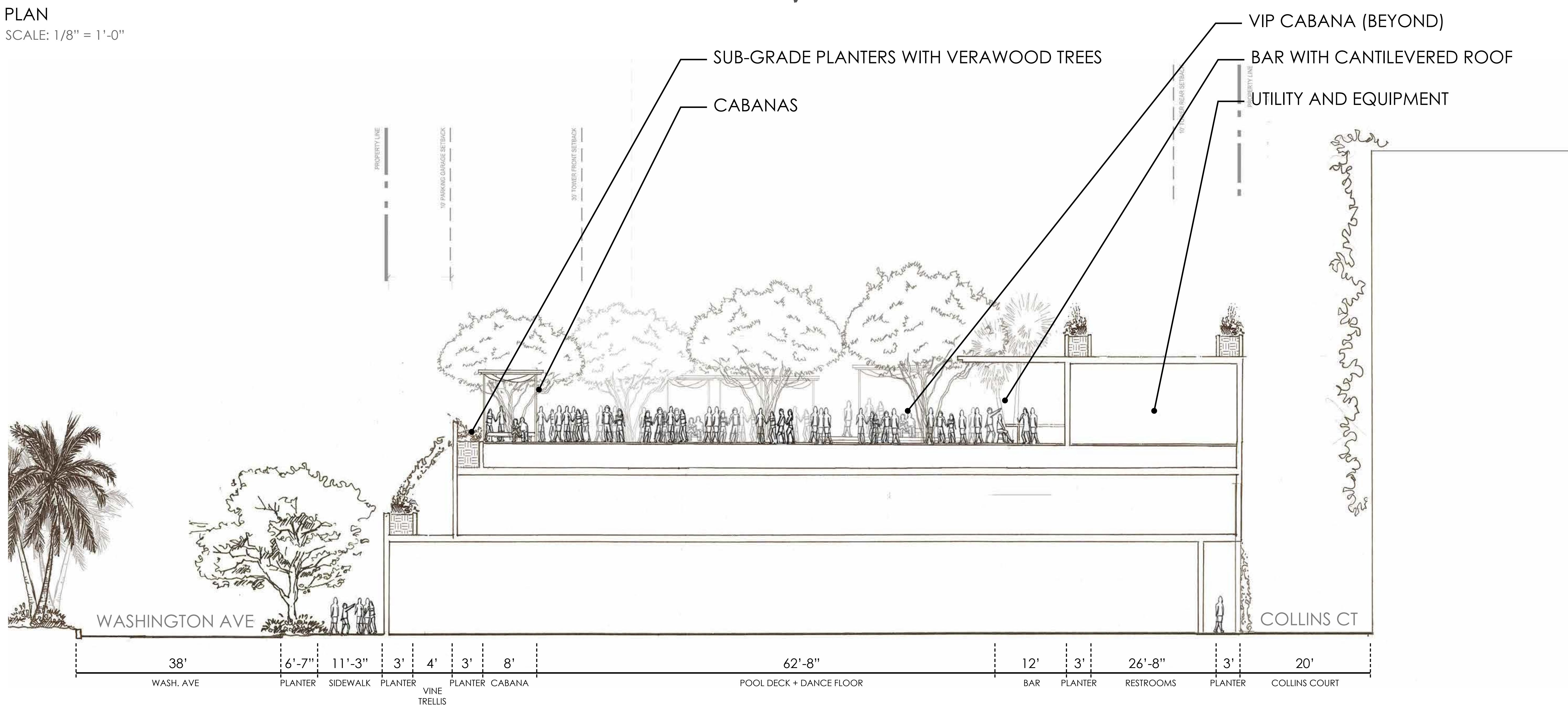
JUNGLES



PLAN
SCALE: 1/8" = 1'-0"



KEY PLAN (N.T.S.)



SECTION 1
SCALE: 1/8" = 1'-0"



Morris Adjmi Architects
www.ma.com
O'Brien Lighting Inc

Washington Squared LLC
Ken Fulk

Nichols Brosch Wurst
Wolfe & Associates
Raymond Jungles inc.

601-685 Washington Ave.
Miami Beach, FL

L-15 Section1

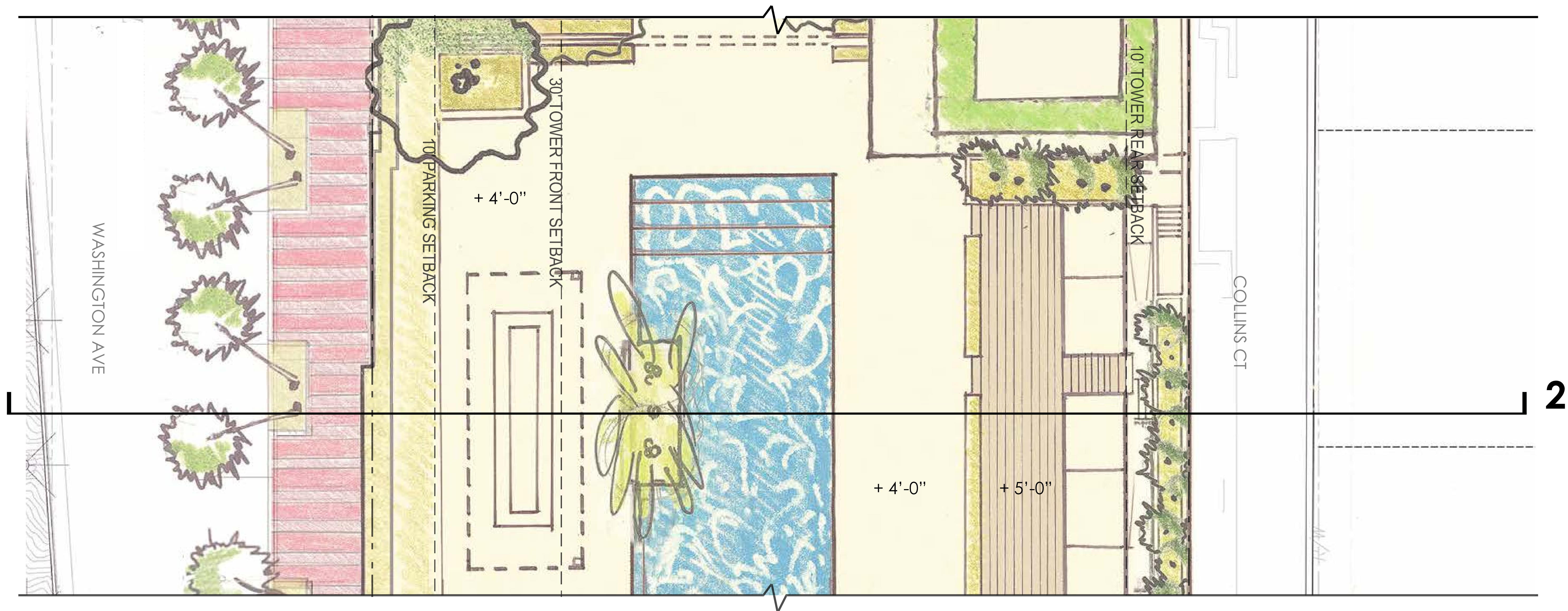
Historic Preservation Board Interim Resubmittal / 17 March 2016

DRAWINGS NOT FOR CONSTRUCTION

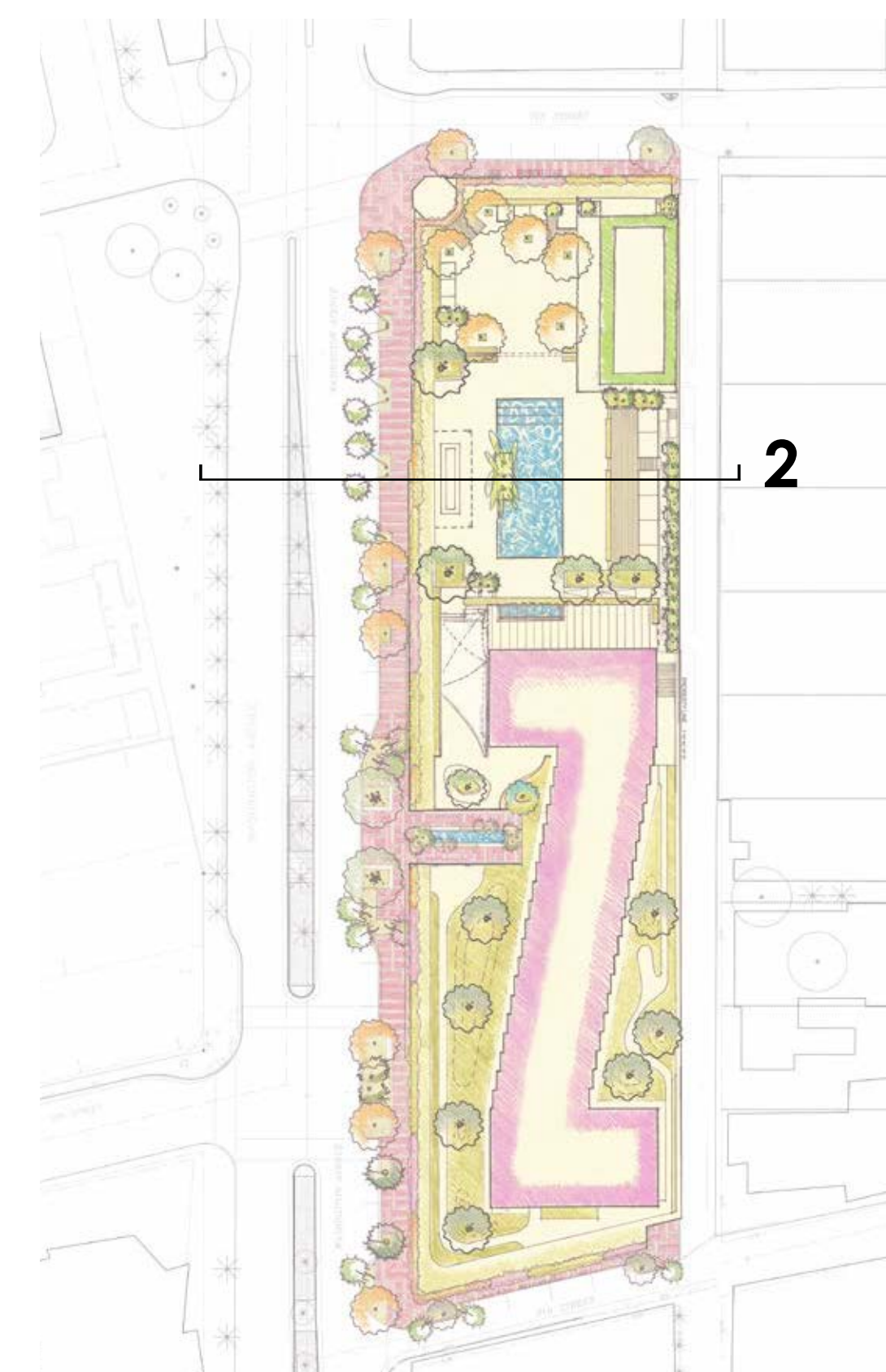
HISTORIC PRESERVATION BOARD INTERIM RESUBMITTAL

601-685 Washington Avenue
Miami Beach, FL | March 17, 2016

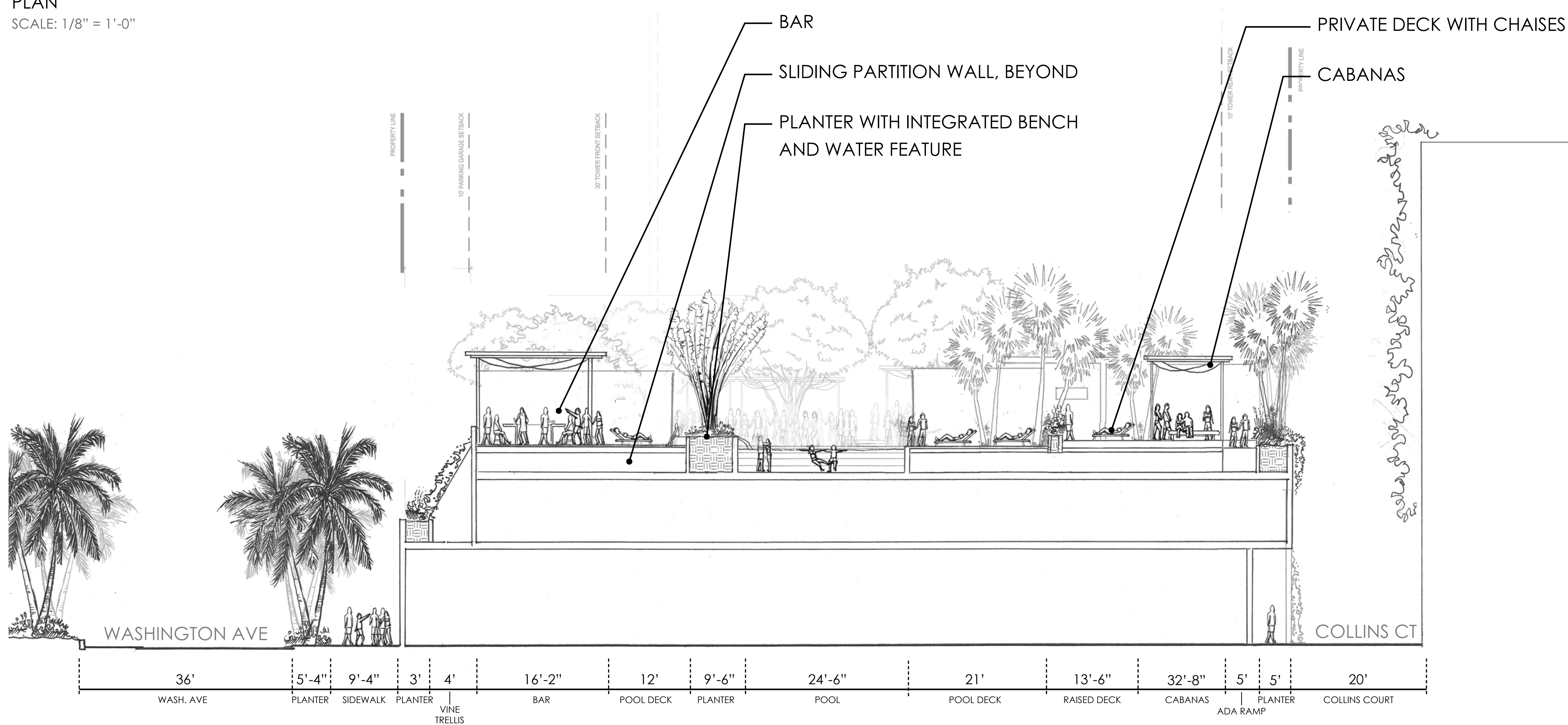
JUNGLES



PLAN
SCALE: 1/8" = 1'-0"



KEY PLAN (N.T.S.)



SECTION 2
SCALE: 1/8" = 1'-0"



Morris Adjmi Architects
www.ma.com
O'Brien Lighting Inc

Washington
Squared LLC
Ken Fulk

Nichols Brosch Wurst
Wolfe & Associates
Raymond Jungles inc.

601-685 Washington Ave.
Miami Beach, FL

L-16 Section 2

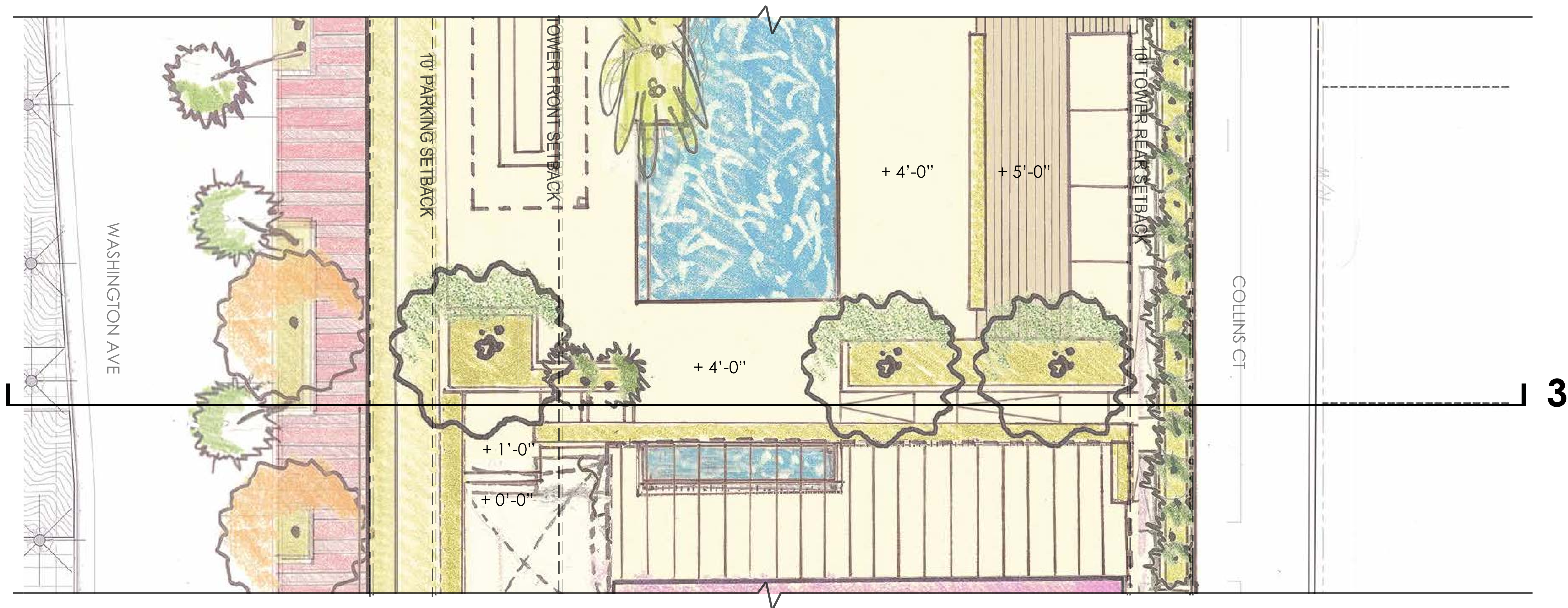
Historic Preservation Board Interim Resubmittal / 17 March 2016

DRAWINGS NOT FOR CONSTRUCTION

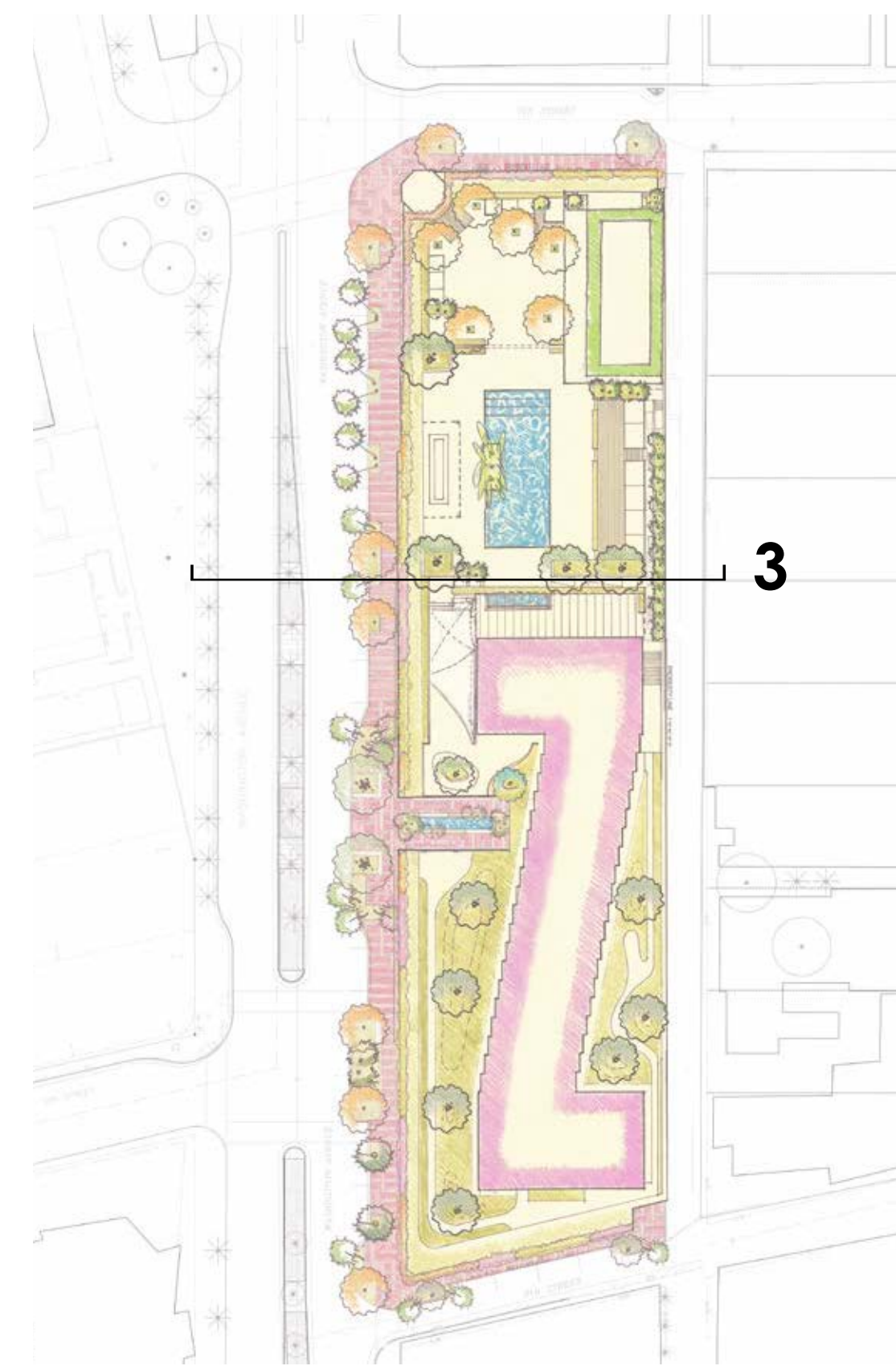
HISTORIC PRESERVATION BOARD INTERIM RESUBMITTAL

601-685 Washington Avenue
Miami Beach, FL | March 17, 2016

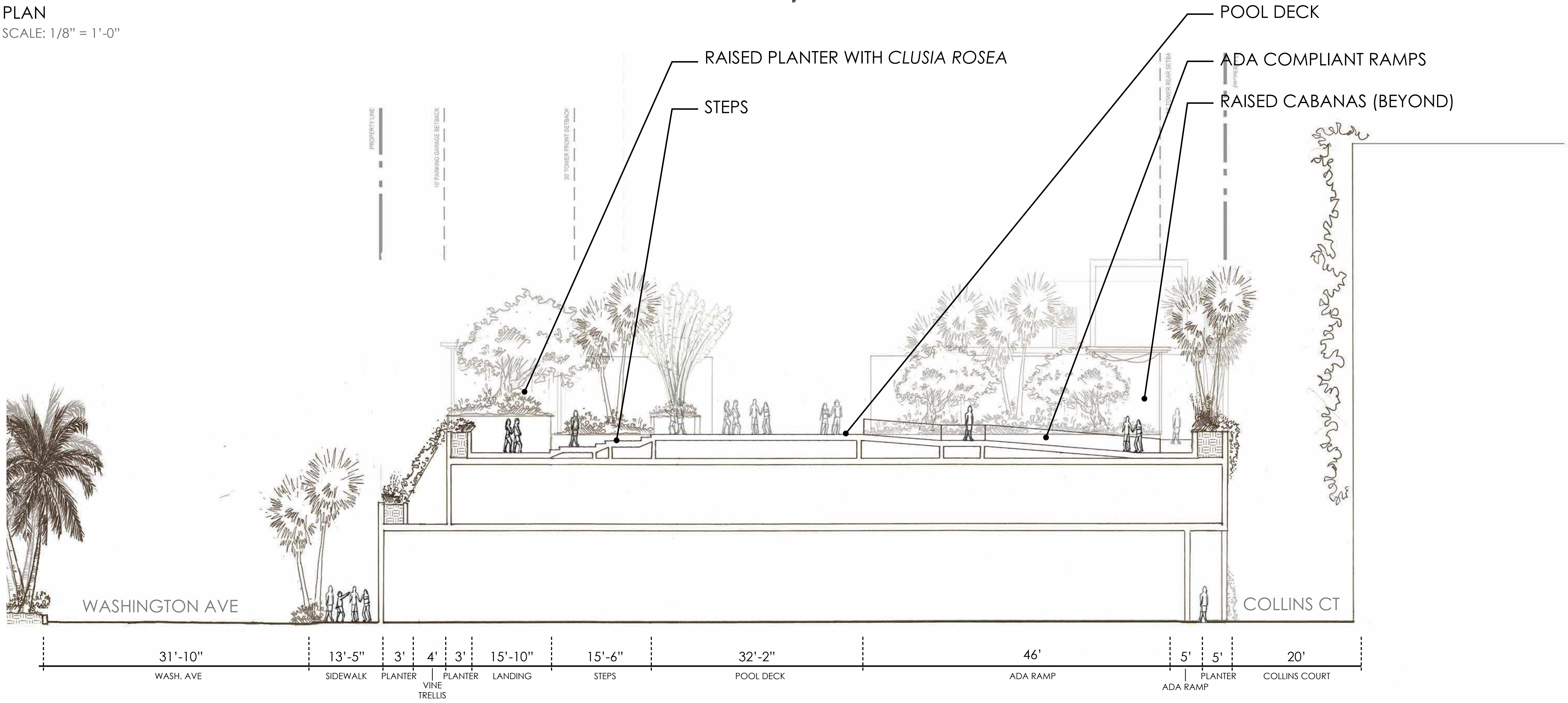
JUNGLES



PLAN
SCALE: 1/8" = 1'-0"



KEY PLAN (N.T.S.)



SECTION 3
SCALE: 1/8" = 1'-0"



Morris Adjmi Architects
www.ma.com
O'Brien Lighting Inc

Washington Squared LLC
Ken Fulk

Nichols Brosch Wurst
Wolfe & Associates
Raymond Jungles inc.

601-685 Washington Ave.
Miami Beach, FL

L-17 Section 3

Historic Preservation Board Interim Resubmittal / 17 March 2016

DRAWINGS NOT FOR CONSTRUCTION

HISTORIC PRESERVATION BOARD INTERIM RESUBMITTAL

601-685 Washington Avenue
Miami Beach, FL | March 17, 2016

