

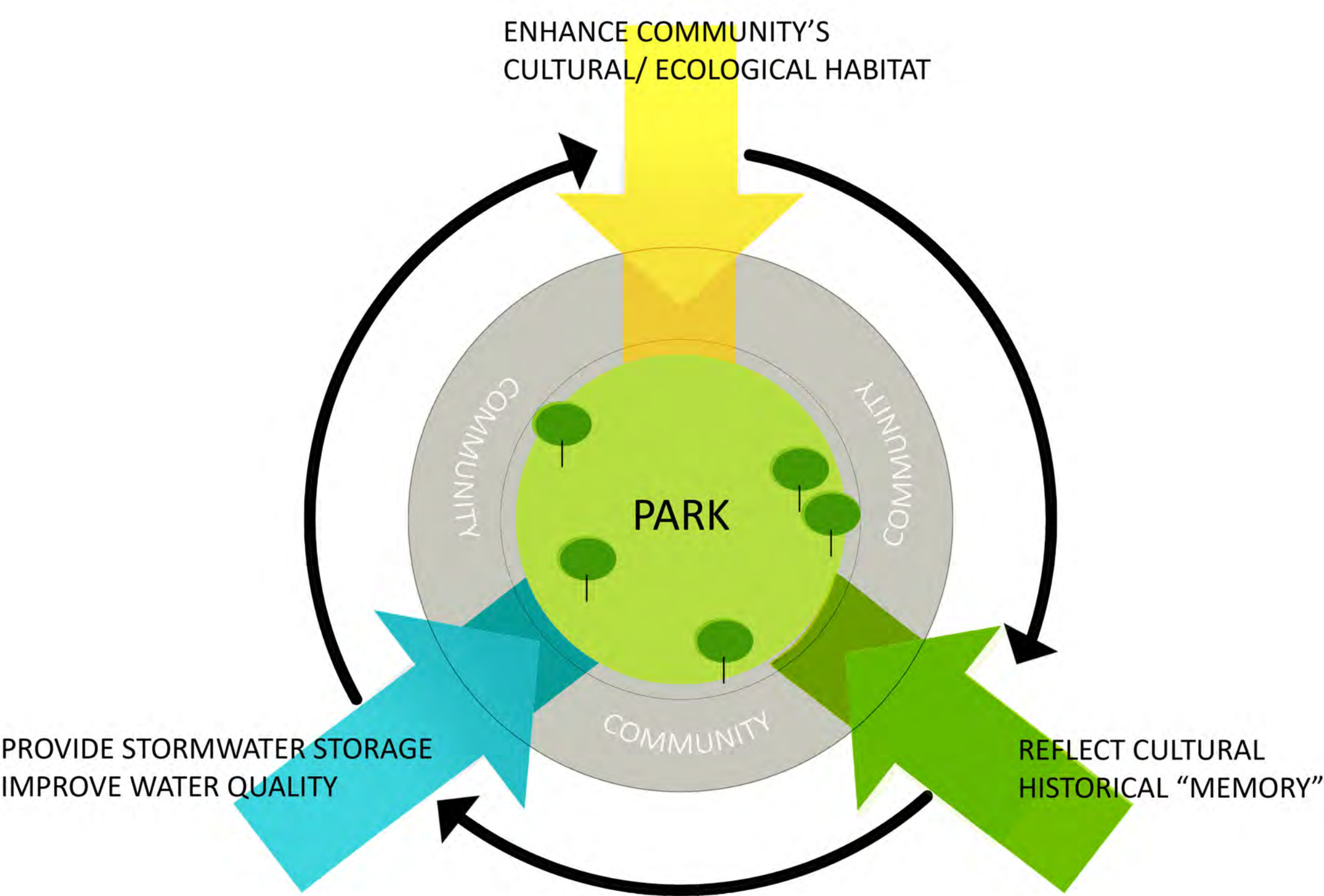
# EXHIBIT A

## CITY OF MIAMI BEACH Finance & Citywide Projects Committee

February 23, 2018



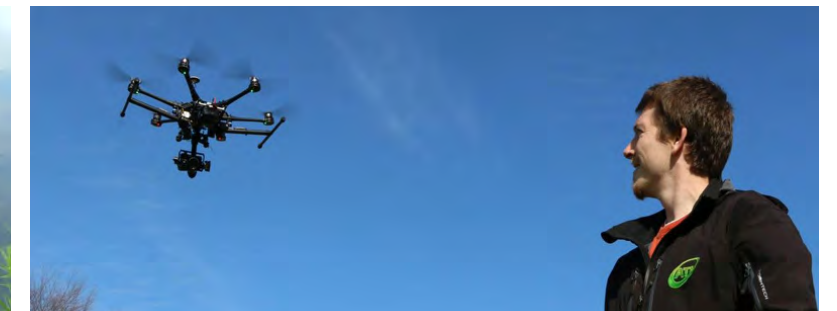
To create a passive park of natural beauty for community enjoyment and enrichment, reflecting our island's culture and ecology while serving as a model of sustainability, stewardship and resilience.





# PROGRAM & ACTIVITIES

<div>Lake</div> <div>Trail</div> <div>Playground</div> <div>Tennis Facilities</div> <div>Dog Park</div> <div>Education</div> <div>Hills &amp; Lawns</div>	<div>Boardwalks</div> <div>Fishing</div> <div>Bird Watching</div>	<div>Amphitheater</div> <div>Gathering</div>
	<div>Walking</div> <div>Jogging</div> <div>Vita course</div>	<div>Biking</div> <div>Skating</div>
	<div>2-3 yr old play</div> <div>5+ yr old play</div>	
	<div>Courts</div> <div>Shelters</div> <div>Seating</div>	<div>Restrooms</div> <div>Office</div> <div>Pro Shop</div>
	<div>Small dog play</div> <div>Large dog play</div> <div>Splash pad</div>	
	<div>Arboretum</div> <div>Community garden</div> <div>Butterfly garden</div> <div>Lake, Aquatic Littoral Zone</div>	
	<div>Fitness</div> <div>Contemplation</div> <div>Yoga</div>	<div>Open play</div> <div>Droning</div> <div>Disc golf</div>











Cut & Fill














SITE FUNCTIONAL DIAGRAM

PEDESTRIAN USE

-  Bus Stops
-  Existing Sidewalk
-  Major Traffic
-  Existing Bike Lane
-  Proposed Sidewalk
-  Proposed Bike Lane

PARK ZONES



-  Parking
-  Entry
-  Active Recreation
-  Passive Recreation
-  Pollinator Garden
-  Pet Friendly
-  Central Lake
-  Swale
-  Littoral Zone
-  Changes in Elevation
-  View shed





## LEGEND

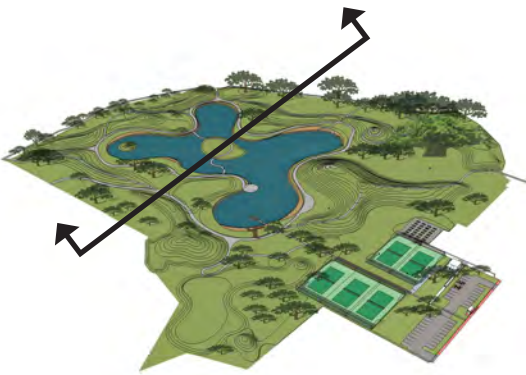
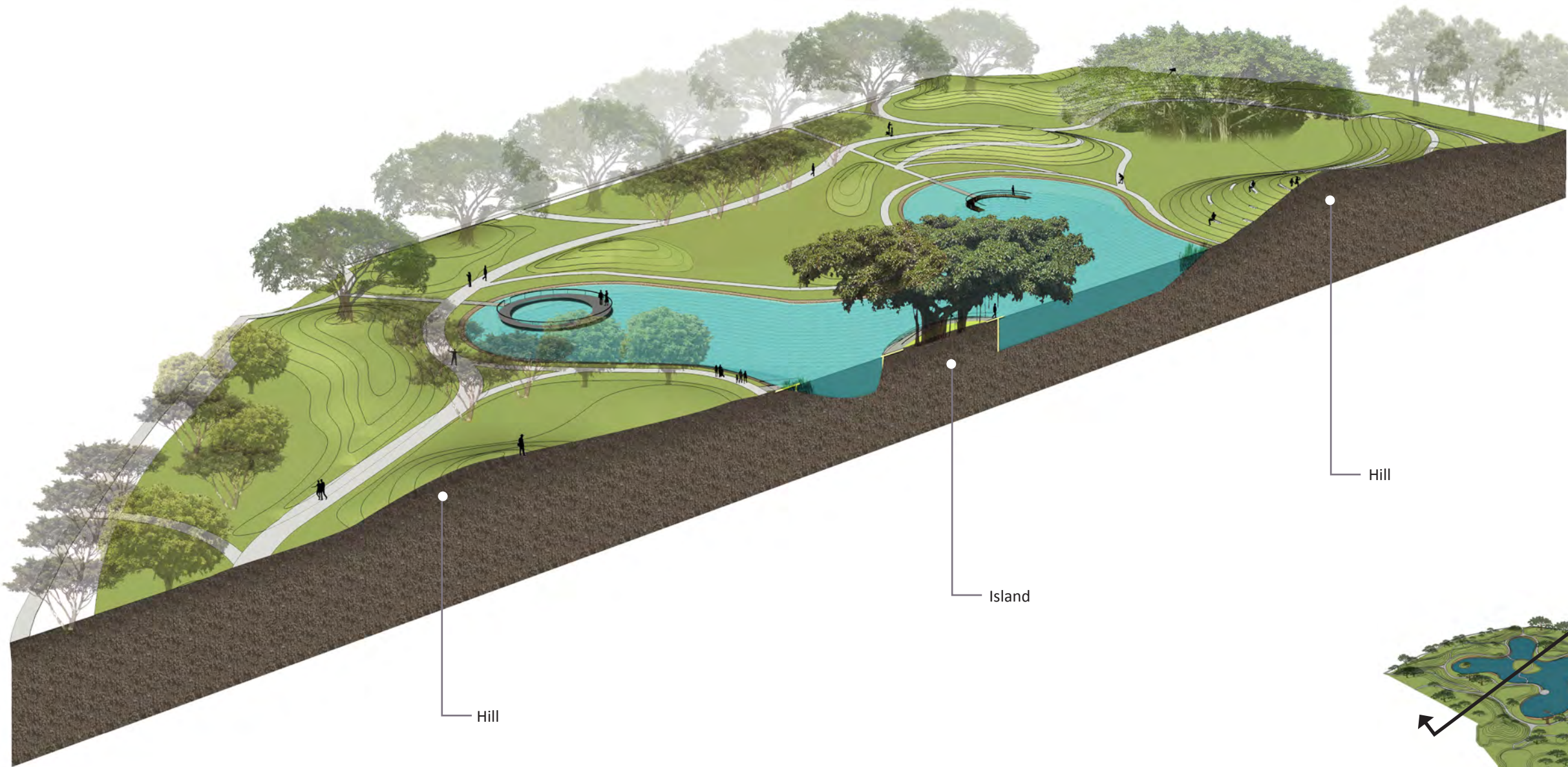
- 1 Playground
- 2 Bus stop
- 3 Tennis Courts
- 4 Tennis Facility and Bathroom
- 5 Parking
- 6 Dog Park
- 7 Entrance Plaza
- 8 Butterfly Garden
- 9 Amphitheater
- 10 Sunset Terrace
- 11 Lake & Islands
- 12 Vita Course
- 13 Meadow
- 14 Open Play
- 15 Overlook
- 16 Pavilions
- 17 Linear Water Feature
- 18 Park Signage
- 19 Community Garden

-  Trail System (5')
-  Vita course / Maintenance / Emergency





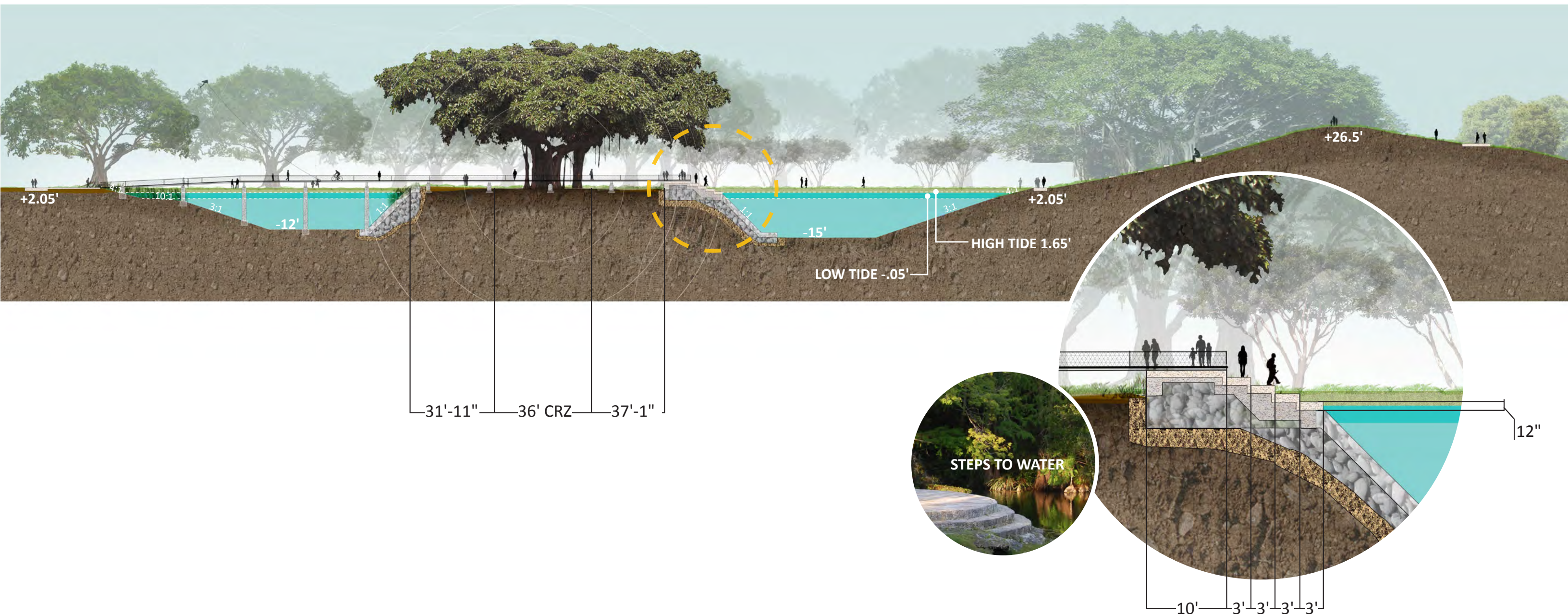
SITE AXONOMETRIC





# ISLAND SECTION

SECTION A-A'





# PLANT COMMUNITIES



Live Oak



Gumbo-limbo



Mahogany



Florida Royal Palm



Wild Tamarind



Wild coffee



Sword fern



Sea Ox-eye Daisy



Seaside Goldenrod



Black Needle Rush



Smooth Cordgrass



Green buttonwood



Red mangrove



Saltgrass



Tropical Coastal Hammock

Transition Zone

Mangrove

Littoral Zone



# BOARDWALKS & BRIDGES

## MATERIALS



Wood Boardwalk



Metal Grating



Boardwalks: **0.19 Miles**







## 28TH STREET ENTRANCE





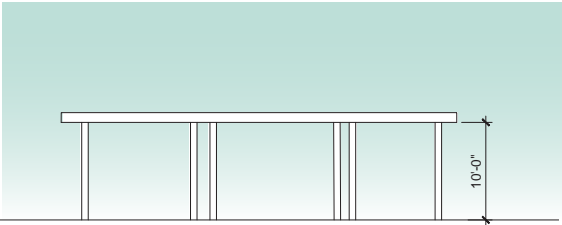
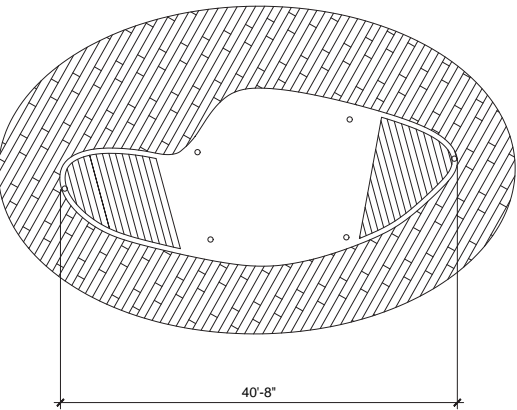


# BOARDWALK & BANYAN TREE





# PAVILION + SHADE STRUCTURES

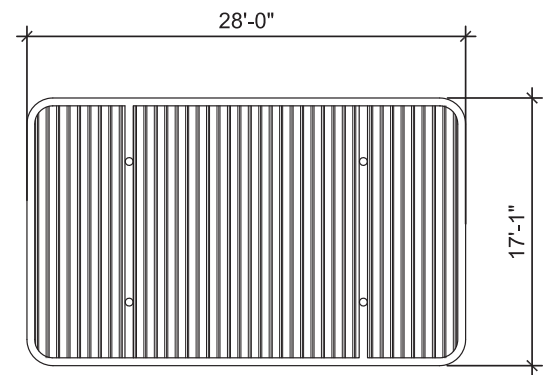


1 SHADE PAVILION  
A-1 SCALE: 1/4" = 1'-0"

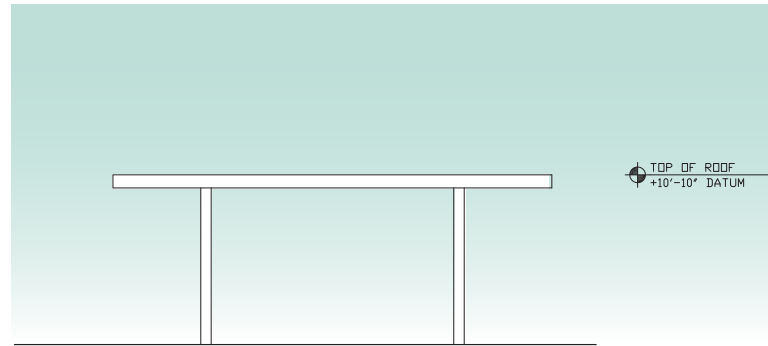




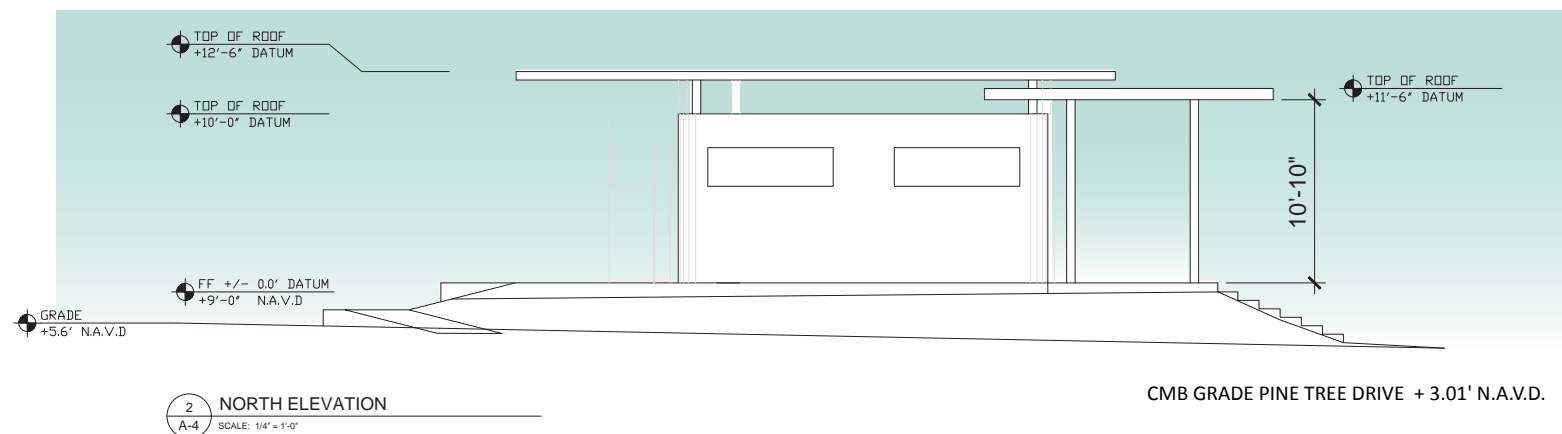
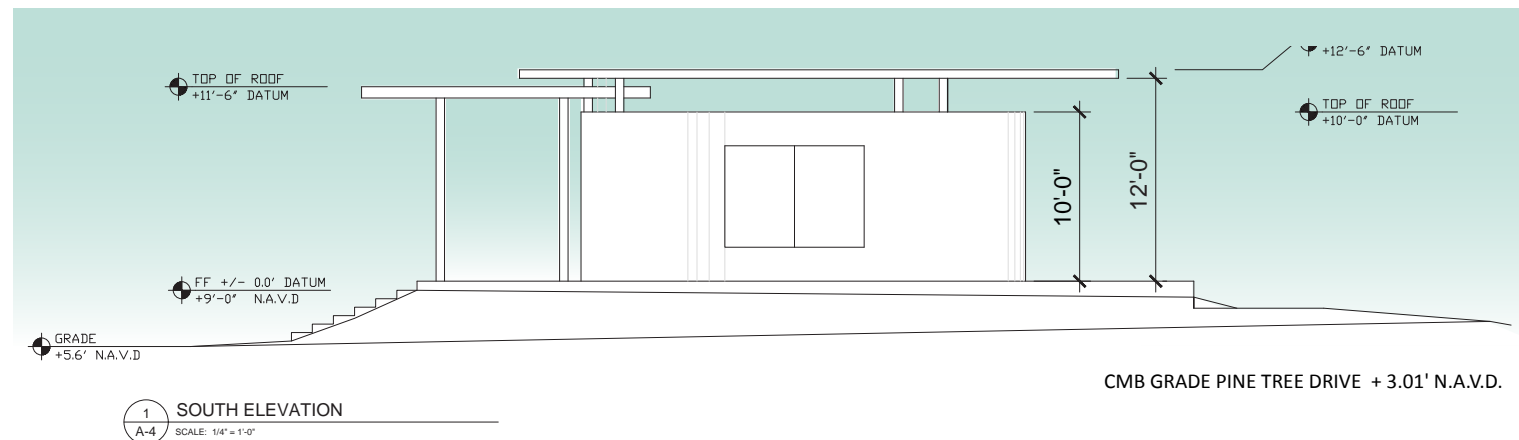
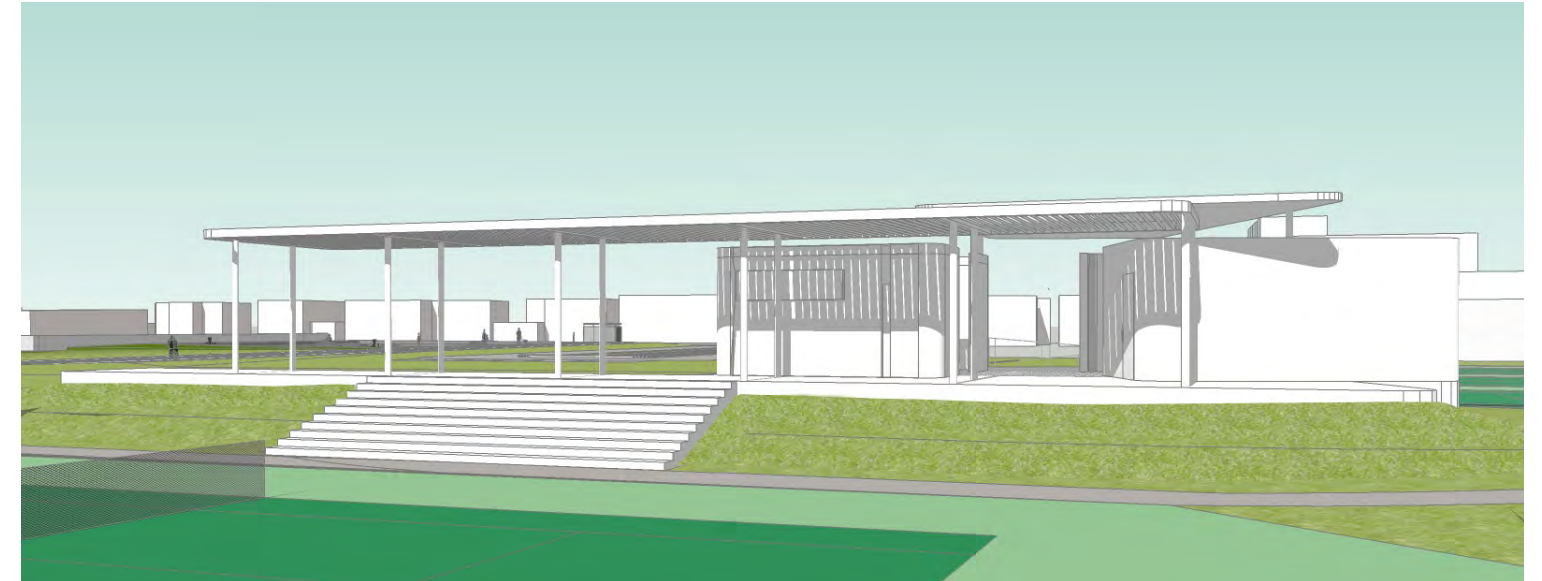
# TENNIS FACILITY



TENNIS SHADE STRUCTURE - ROOF PLAN



TENNIS SHADE STRUCTURE - ELEVATION



Concrete panels



# TENNIS COURTS



TENNIS COURTS FENCE



FENCE CONFIGURATION



FENCE DETAIL



WIND SCREEN

TENNIS COURTS LIGHTING

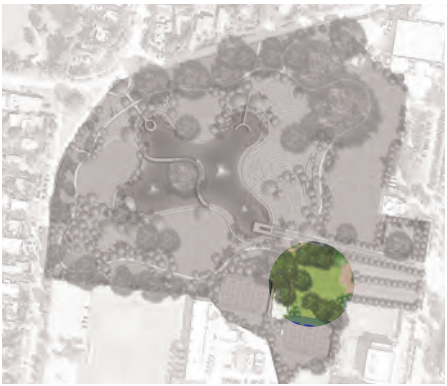


MH : 25'



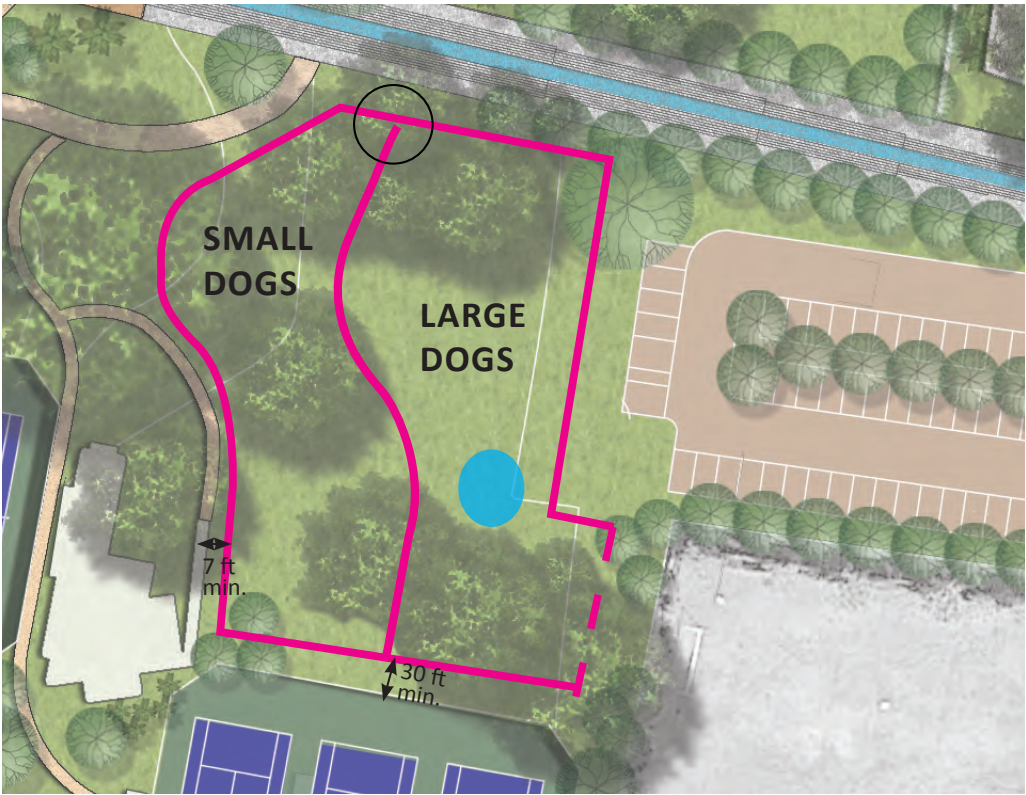
# DOG PARK

Key Plan



## LEGEND

-  Entrance
-  New Fence
-  Existing Fence
-  Splash Pad



Splash Pad



Fence

# VITA COURSE



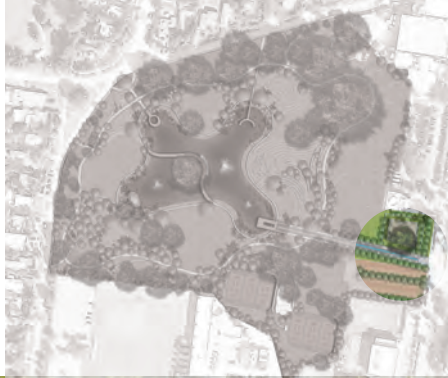




# BUTTERFLY GARDEN, SOUTH SIDE



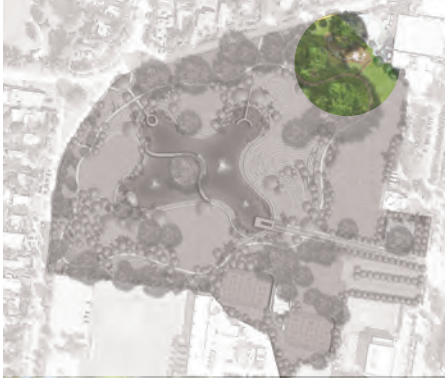




EAST ENTRANCE



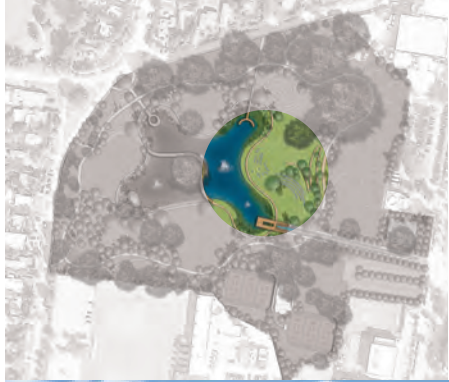




# PLAYGROUND

























# AMPHITHEATER

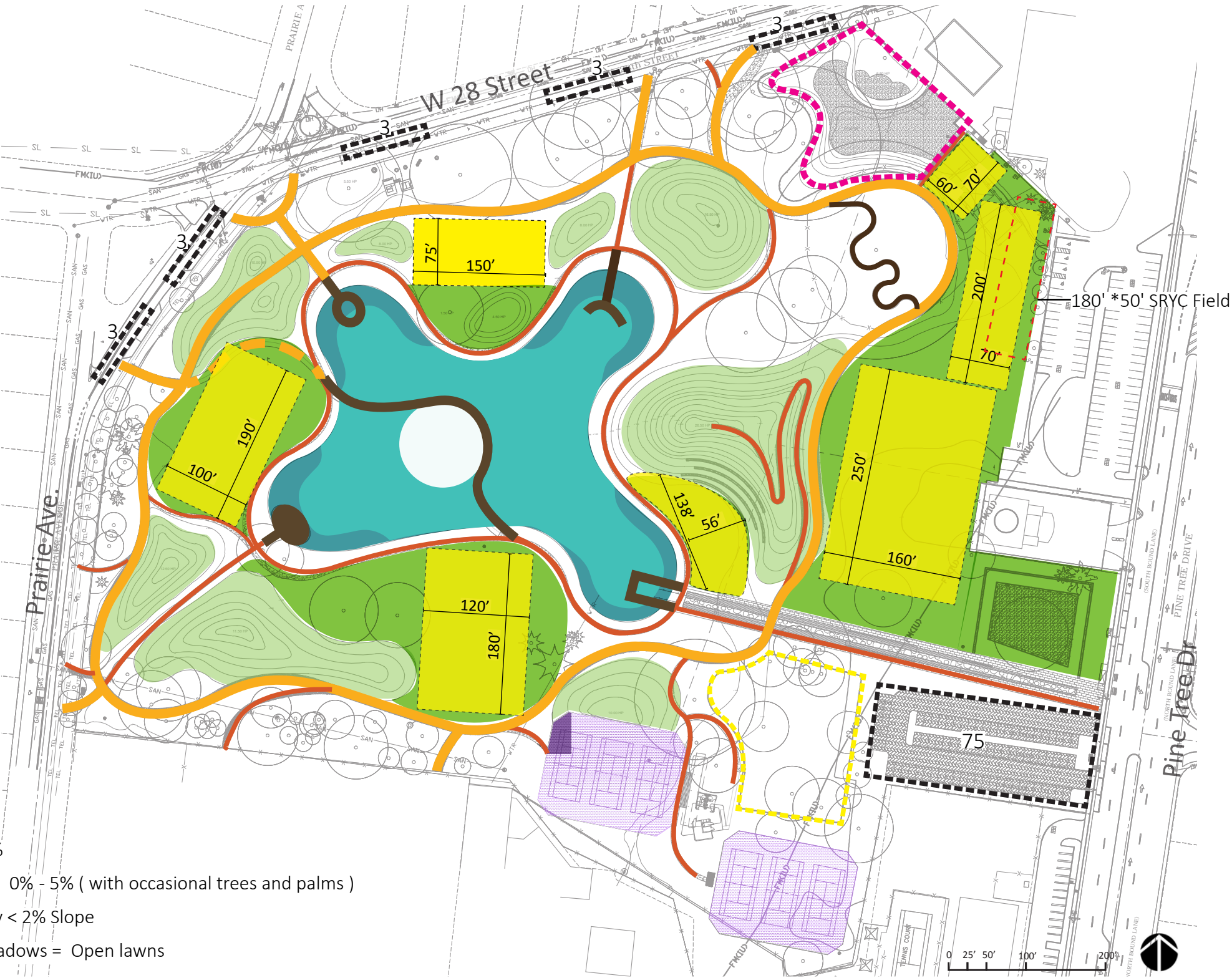




# PROGRAM SPECIFICATIONS FOR SITE PLAN

	Miles of Vita Course Loop	0.52
	Miles of Pathway	0.82
	Miles of Trails	1.34
	Miles of Boardwalks	0.19
	Acres of Open Play	2.73
	Acres of Meadow	2.30
	Acres of Open Lawns	5.03
	Acres of Hills	2.55
	Acres of Lake	1.65
	Acres of Littoral Zone	0.5
	Acres of Lake with Littoral Zone	2.15
	Acres Playground	0.5
	Acres Dog Park	0.55
	Tennis Courts	6
	Acres Parking Lot	0.63
	Parking Stalls	90
	Restroom	1*

-  Hills + 5%
  -  Meadows 0% - 5% ( with occasional trees and palms )
  -  Open play < 2% Slope
- \*Open play + Meadows = Open lawns





## VIDEO



# PROJECT TEAM

**City of Miami Beach - CIP**  
Client

**Savino & Miller Design Studio (PRIME)**  
Landscape Architect & Master Planning

**3TCI, Inc.**  
Survey and GIS

**Ardaman & Associates**  
Geotechnical Engineering

**Aquadynamics Design Group, Inc.**  
Aquatic Engineer

**Coastal Systems International, Inc.**  
Civil & Environmental Engineering, Site Grading  
and Drainage

**Construction Management Services, Inc.**  
Cost Estimating

**Douglas Wood Associates, Inc.**  
Structural Engineer

**EE&G Environmental Services, Inc.**  
Environmental Engineering and Permitting

**Global Sports & Tennis Design Group, LLC.**  
Tennis Court Design

**Tropical Designs of Florida**  
Arborist

**William Lane**  
Architecture

**Kenneth Di Donato, Inc.**  
Irrigation Design

**Johnson, Avedano, Lopez, Rodriguez & Walewski  
Engineering Group, Inc. (JALRW)**  
MEP



Coastal Systems, Savino Miller Design Studio,  
JALRW & Kenneth DiDonato



William Lane



Coastal Systems, Savino Miller Design Studio,  
William Lane, JALRW & Kenneth DiDonato



Douglas Wood



THANK YOU!