

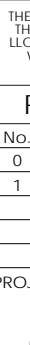


SIGN AND DATE BELOW AND INITIAL ALL SHEETS TO INDICATE ACCEPTANCE AND APPROVAL FOR GATOR DOCK & MARINE TO PROCEED WITH FABRICATION.

DATE _____

CRANE MATERIALS INTERNATIONAL
1165 NORTHCHASE PKWY
SUITE 300
MARIETTA, GA 30067



<div><div>GatorBridge Prefabricated Aluminum Bridges</div></div>		
2880 MELLONVILLE AVE, SANFORD, FL 32773 800/256-8857 407/323-0190		
THE INFORMATION CONTAINED IN THIS DRAWING IS THE SOLE PROPERTY OF GATOR DOCK & MARINE, LLC. ANY REPRODUCTION IN PART OR AS A WHOLE WITHOUT THE WRITTEN PERMISSION OF GATOR DOCK & MARINE, LLC IS PROHIBITED.		
RECORD OF REVISIONS		
No.	DATE	DESCRIPTION
0	08/02/17	DRAFT CONCEPT
1	10/12/17	UPDATED CONCEPT
PROJECT NAME:		
LINCOLN COURT PEDESTRIAN BRIDGE		
CUSTOMER NAME:		
BERGERON LAND DEVELOPMENT, INC.		
CUSTOMER ADDRESS:		
19612 SW 69TH PLACE FORT LAUDERDALE, FL		
PROJECT LOCATION:		
LINCOLN COURT MIAMI BEACH, FL		
CMI ORDER NO.:		
142559		
CUSTOMER PO NO.:		
	NAME	DATE
DRAWN BY:	MKL	10/12/17
CHECKED BY:	CBB	10/12/17
FABRICATION:	X	X
DRAWING NO.:		
S-1		
TITLE PAGE		
<small>Physical properties are defined by ASTM testing standards, The Aluminum Association Design Manual, The Naval Facilities Design Manual DMF 7.2, and The US Army Corps of Engineers General Design Guide: PFC Sheet Pile and/or standard engineering practice. The values shown are nominal and may vary. The information found in this document is believed to be true and accurate. No warranties of any kind are made as to the suitability of any CMI product for particular applications or the results obtained there from. ShoreGuard®, The ShoreGuard Retaining System®, C-Load®, TimberGuard®, GeoGuard®, Shora Dock®, Shore-All®, GatorGate®, GatorDock Elite®, ArmoWave®, ArmoRoll®, Box Piling®, UltraComposite®, The Steel Alternative®, Elite Walk®, Elite Pave®, Elite Tropic Pave®, Pathways®, ACX®, XCC Technology®, ACX Wave®, GatorBridge®, GatorChannel®, Gator Sheet Piling®, GatorDock®, 1 Beam Lock®, TrenchGuard®, Crane Materials International® logo, CMI Sheet Piling Solutions®, Aqua Terra Systems®, Endurance®, Endurance CSP®, Patents®, Edison® Products®, 23 Pile®, PinLock®, Sherecure®, ShoreGuard Retaining Wall System®, Shora Panel® and CMI Waterfront Solutions® are trademarks, service marks or trade names of CMI Limited Co. CMI Limited Co. products are covered by one or more of the following U.S. Patents and International Patents: 4,674,921; 4,690,585; 4,992,208; 5,145,287; 6,000,881; 6,093,155; 6,095,666; 6,042,154; 6,375,667; 7,005,807; 7,096,046; 7,025,539; 7,393,482; 5,503,503; 5,803,672; 6,251,271; 1,245,861/CA; 7,214,237 and other patents pending. © 2005-2017 CMI Limited Co. All Rights Reserved.</small>		
TOLERANCES UNLESS SPECIFIED OTHERWISE XXX = ± 1/4"; FRACTIONS = ± 1/8"; ANGULAR = ± 1°		
CMI LIMITED CO. 1165 NORTHCCHASE PARKWAY SE SUITE 300 - MARIETTA, GA 30067 PHONE: 770-933-8166		
ESTIMATED		
NOT FOR CONSTRUCTION		

FOR REVIEW

BILL OF MATERIALS					
ITEM #		TYPE	DESCRIPTION	QTY/COMMENTS	WEIGHTS
A		BRIDGE	8'x65'-0" CASCADE BRIDGE	1	~17,000 LBS
	1	BOX FRAME	10" E-CHANNEL	1	---
	2	TRUSS CHORDS	8"x8"x1/2" TUBE	4	---
	3	TRUSS END POSTS	4"x4"x1/2" TUBE	4	---
	4A	TRUSS END VERTICALS	4"x4"x1/2" TUBE	4	---
	4B	TRUSS INTERIOR VERTICALS	4"x4"x1/2" TUBE	18	---
	5A	TRUSS END DIAGONALS	4"x4"x1/2" TUBE	4	---
	5B	TRUSS INTERIOR DIAGONALS	4"x4"x1/4" TUBE	20	---
	6	FLOOR STRINGERS	4"x1 1/2" C-CHANNEL	6	---
	7	FLOOR BEAMS	6"x4"x1/4" TUBE	11	---
	8A	HORIZONTAL BRACING @ ENDS	6"x4"x1/4" TUBE	8	---
	8B	HORIZONTAL BRACING @ INTERIOR	6"x2 1/2" C-CHANNEL	8	---
	9	FLOOR END BEAMS	6"x2 1/2" C-CHANNEL	2	---
	10	DECKING	IPE 5/4x6" DECK PLANKS	575 SQ. FT. 1/8" MAX SPACING	---
	11	BASE PLATE	1'-2"x1'-4"x1/2" FLAT BAR	4	---
	12	BASE GUSSET	1/4" FLAT BAR GUSSET	12	---
	13	TOP CHORD END CAP	1/4" FLAT BAR END CAP	4	---
	14	CABLE RAIL	42" CABLE RAIL ASSEMBLY W/ 4" MAX SPACING	2 @ 65'-0" LF.	---
	15	DECK CORNER GUSSETS	1/4" DECK CORNER GUSSETS	8	---
16A	ROOF BRACING @ END	4"x4"x1/2" TUBE	6	---	
16B	ROOF BRACING @ INTERIOR	4"x4"x1/4" TUBE	19	---	
17	TRUSS PANELING	1/8" THICK PERFORATED ALUMINUM SHEET	48	---	
18	ROOF PANELING	1/8" THICK PERFORATED ALUMINUM SHEET	12	---	
B		BEARING PAD	1'-2"x1'-6"x1" UHMW PAD	4	~10 LBS (EACH)

GENERAL NOTES:

- ALUMINUM SPECIFICATIONS:
- ALL STRUCTURAL COMPONENTS SHALL BE 6061-T6 ALUMINUM
 - ALL NON-STRUCTURAL COMPONENTS MAY BE 6063-T6 ALUMINUM
 - ALL ALUMINUM WELD FILLER SHALL BE 5356
 - ALUMINUM WELDING SHALL CONFORM TO AWS D1.2

- FINISH:
- BRIDGE SHALL BE POWDER COATED "SIGNAL WHITE" (EXCEPTION - SS CABLES AND IPE DECKING)

- BEARING COMPONENTS:
- BEARING PADS TO BE UHMW

- FABRICATION NOTES:
- DEBURR ALL EXPOSED WELDS WHICH MAY COME IN CONTACT WITH PEDESTRIANS.
 - NO BRIDGE CAMBER REQUIRED TO OFFSET DEAD LOAD

- INSTALLATION:
- INSTALLATION BY OTHERS - NO RESPONSIBILITY IS ACCEPTED FOR WORK BY OTHERS
 - BRIDGE IS SIZED FOR 1" ANCHOR BOLTS, TO BE DESIGNED AND PROVIDED BY OTHERS.
 - BRIDGE IS SIZED FOR A 1" GAP ON EACH END. EXPANSION JOINT MATERIAL AND/OR COVER PLATES PROVIDED BY OTHERS.

- LOADING:
- SEE CALCULATION PACKAGE FOR COMPLETE DESIGN & LOADING CRITERIA
 - LIVE LOAD: 90 PSF
 - VEHICLE LOAD: NONE
 - WIND LOAD: 145 MPH PER AASHTO STANDARD SPECIFICATIONS / ASCE 7-05
 - NO FLOOD LOADING CONSIDERED

- DESIGN CRITERIA:
- AASHTO LRFD GUIDE SPECIFICATIONS FOR THE DESIGN OF PEDESTRIAN BRIDGES, 2009 WITH 2015 INTERIM REVISIONS
 - AASHTO LRFD BRIDGE DESIGN SPECIFICATIONS, 2010 WITH 2015 INTERIM REVISIONS
 - AASHTO STANDARD SPECIFICATIONS FOR STRUCTURAL SUPPORTS FOR HIGHWAY SIGNS, LUMINAIRES, AND TRAFFIC SIGNALS, 2013 WITH 2015 INTERIM REVISIONS
 - STANDARD ENGINEERING PRACTICE



2880 MELLONVILLE AVE, SANFORD, FL 32773
800/256-8857 407/323-0190

THE INFORMATION CONTAINED IN THIS DRAWING IS THE SOLE PROPERTY OF GATOR DOCK & MARINE, LLC. ANY REPRODUCTION IN PART OR AS A WHOLE WITHOUT THE WRITTEN PERMISSION OF GATOR DOCK & MARINE, LLC IS PROHIBITED.

RECORD OF REVISIONS		
No.	DATE	DESCRIPTION
0	08/02/17	DRAFT CONCEPT
1	10/12/17	UPDATED CONCEPT

PROJECT NAME:

**LINCOLN COURT
PEDESTRIAN BRIDGE**

CUSTOMER NAME:

**BERGERON LAND
DEVELOPMENT, INC.**

CUSTOMER ADDRESS:

19612 SW 69TH PLACE
FORT LAUDERDALE, FL

PROJECT LOCATION:

LINCOLN COURT
MIAMI BEACH, FL

CMI ORDER NO.:

142559

CUSTOMER PO NO.:

	NAME	DATE
DRAWN BY:	MKL	10/12/17
CHECKED BY:	CBB	10/12/17
FABRICATION:	X	X

DRAWING NO.:

S-2

**BRIDGE MATERIAL LIST
& GENERAL NOTES**

Physical properties are defined by ASTM testing standards. The Aluminum Association Design Manual, The Naval Facilities Design Manual DM 7-2, and The US Army Corps of Engineers General Design Guide: PVC Sheet Pile and/or standard engineering practice. The values shown are nominal and may vary. The information found in this document is believed to be true and accurate. No warranties of any kind are made as to the suitability of any CMI product for particular applications or the results obtained there from. ShoreGuard®, The ShoreGuard Seawall System™, E-Loc®, TimberGuard®, GeoGuard®, Dura Deck®, Shore Alert®, GatorGates®, GatorDock Elite®, ArmorWall®, ArmorGuard®, Box Profile®, UltraComposite®, The Steel Alternative®, Elite Wall®, Elite Panel®, Elite Fascia Panel®, FlatPanel®, XCR®, XCR Technology™, XCR Vinyl®, GatorBridge®, Galvaluminum®, Gator Sheet Piling®, Gallicore®, i-Maxx i-loc®, Textured Stone®, Curva Materials International® logo, CMI Sheet Piling Solutions®, Aqua Terra System™, Endurance™, Endurance CSP™, Polaris™, Eclipse™, GridGrip™, 21 Poly®, PolyClear®, ShoreKape®, ShoreKape Retaining Wall Systems®, Sheer Panel® and CMI Waterfront Solutions™ are trademarks, service marks or trade names of CMI Limited Co. CMI Limited Co. products are covered by one or more of the following U.S. Patents and International Patents: 4,674,931; 4,690,588; 5,292,208; 5,345,287; 6,000,883; 6,033,155; 6,053,666; 6,420,354; 6,575,667; 7,099,807; 7,096,066; 7,025,539; 7,393,482; 5,503,093; 5,803,670; 6,331,771; 1,249,063CA; 7,014,237 and other patents pending. © 2005-2017 CMI Limited Co. All Rights Reserved.

TOLERANCES UNLESS SPECIFIED OTHERWISE
XXX = ± 1/4"; FRACTIONS = ± 1/8"; ANGULAR = ± 1 °

CMI LIMITED CO.
1165 NORTHCHASE PARKWAY SE
SUITE 300 - MARIETTA, GA 30067
PHONE: 770-933-8166

FOR REVIEW

NOT FOR CONSTRUCTION

CUSTOMER
INITIAL

THE INFORMATION CONTAINED IN THIS DRAWING IS THE SOLE PROPERTY OF GATOR DOCK & MARINE, LLC. ANY REPRODUCTION IN PART OR AS A WHOLE WITHOUT THE WRITTEN PERMISSION OF GATOR DOCK & MARINE, LLC IS PROHIBITED.

RECORD OF REVISIONS		
No.	DATE	DESCRIPTION
0	08/02/17	DRAFT CONCEPT
1	10/12/17	UPDATED CONCEPT

PROJECT NAME:
**LINCOLN COURT
PEDESTRIAN BRIDGE**

CUSTOMER NAME:
**BERGERON LAND
DEVELOPMENT, INC.**

CUSTOMER ADDRESS:
19612 SW 69TH PLACE
FORT LAUDERDALE, FL

PROJECT LOCATION:
LINCOLN COURT
MIAMI BEACH, FL

CMI ORDER NO.:
142559

CUSTOMER PO NO.:

	NAME	DATE
DRAWN BY:	MKL	10/12/17
CHECKED BY:	CBB	10/12/17
FABRICATION:	X	X

DRAWING NO.:
S-4
**BRIDGE TRUSS
DETAILS**

Physical properties are defined by ASTM testing standards, The Aluminum Association Design Manual, The Naval Facilities Design Manual DM 7-2, and The US Army Corps of Engineers General Design Guide: PVC Sheet Pile and/or standard engineering practice. The values shown are nominal and may vary. The information found in this document is believed to be true and accurate. No warranties of any kind are made as to the suitability of any CMI product for particular applications or the results obtained there from. ShoreGuard®, The ShoreGuard Seawall System™, E-Lox®, TimberGuard®, GeoGuard®, Dura Deck®, Shore Alert®, GatorGates®, GatorDock Elite®, ArmorWall®, ArmorGuard®, Box Piling®, UltraComposite™, The Steel Alternative®, Elite Wall®, Elite Panel®, Elite Fascia Panel®, FlatPanel™, XCR®, XCR Technology™, XCR Vinyl™, GatorBridge®, GatorAluminum™, Gator Sheet Piling®, GatorDeck®, i-Mason Deck™, Textured Stone™, Curva Materials International™ logo, CMI Sheet Piling Solutions™, Aqua Terra System™, Endurance™, Endurance CSP™, Polaris™, Eclipse™, GridGrip™, 21 Poly™, PolyCure™, ShoreKape™, ShoreKape Retaining Wall Systems™, Shore Panel™ and CMI Waterfront Solutions™ are trademarks, service marks or trade names of CMI Limited Co. CMI Limited Co. products are covered by one or more of the following U.S. Patents and International Patents: 4,674,931; 4,690,588; 5,292,208; 5,345,287; 6,000,883; 6,053,155; 6,053,666; 6,420,354; 6,575,667; 7,099,807; 7,096,066; 7,025,539; 7,393,482; 5,503,093; 5,803,670; 6,331,271; 5,245,063CA; 7,014,237 and other patents pending. © 2005-2017 CMI Limited Co. All Rights Reserved.

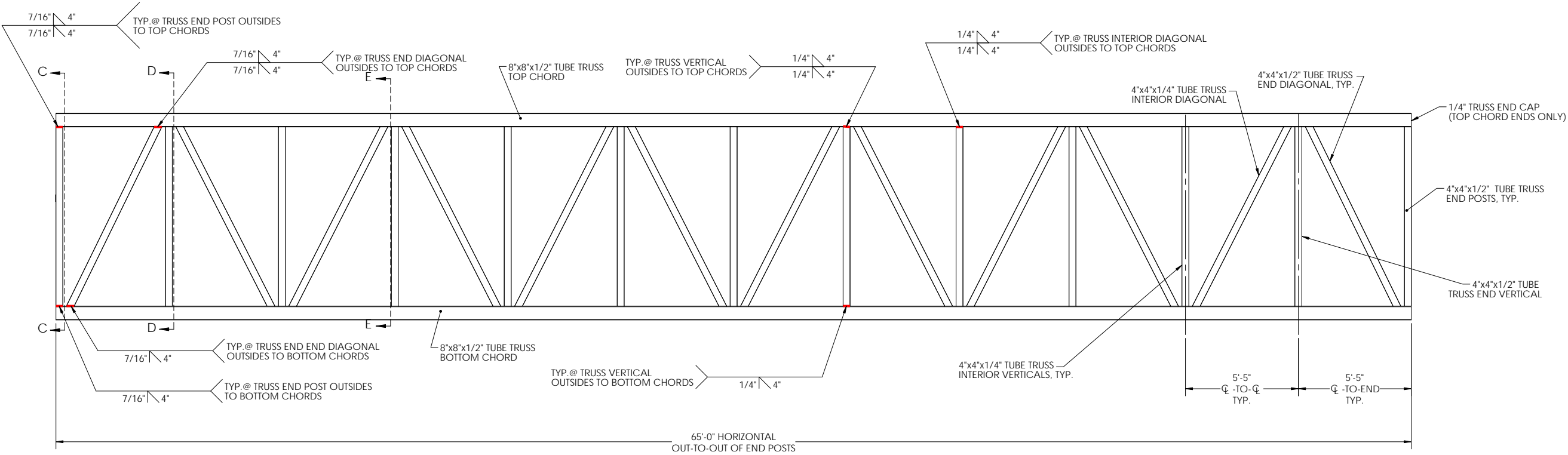
TOLERANCES UNLESS SPECIFIED OTHERWISE
XXX = ± 1/4"; FRACTIONS = ± 1/8"; ANGULAR = ± 1°

CMI LIMITED CO.
1165 NORTHCHASE PARKWAY SE
SUITE 300 - MARIETTA, GA 30067
PHONE: 770-933-8166

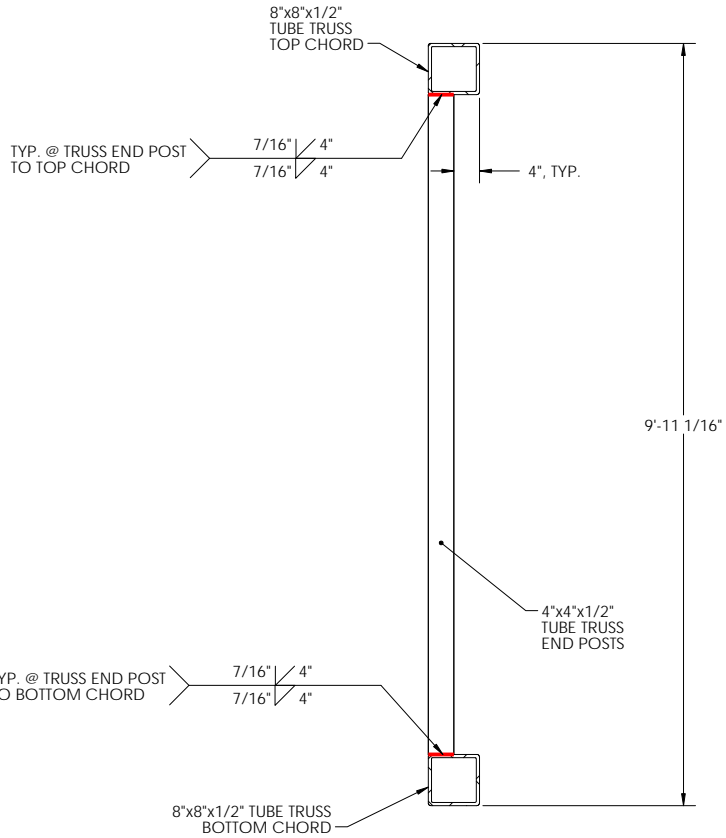
FOR REVIEW

CUSTOMER
INITIAL

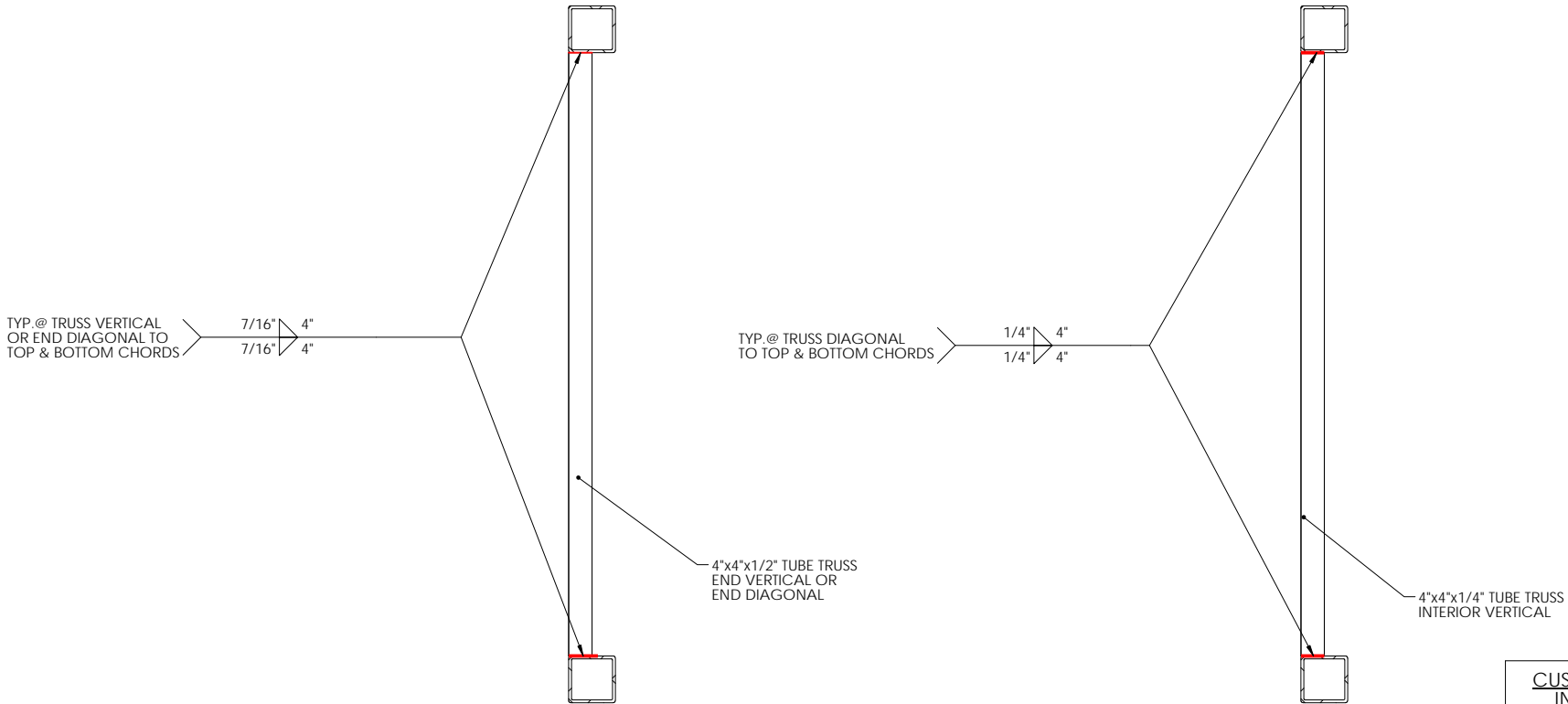
NOT FOR CONSTRUCTION



TRUSS ELEVATION VIEW
(QUANTITY x2)

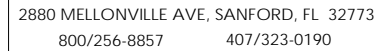


TRUSS SECTION C-C



TRUSS SECTION D-D

TRUSS SECTION E-E



RECORD OF REVISIONS

0	08/02/17	DRAFT CONCEPT
1	10/12/17	UPDATED CONCEPT

LINCOLN COURT PEDESTRIAN BRIDGE

CUSTOMER ADDRESS:
19612 SW 69TH PLACE
FORT LAUDERDALE, FL

PROJECT LOCATION:
LINCOLN COURT
MIAMI BEACH, FL

CMI ORDER NO.:	142559
----------------	--------

CUSTOMER PO NO.:

	NAME	DATE
DRAWN BY:	MKL	10/12/17
CHECKED BY:	CBB	10/12/17
FABRICATION:	X	X

DRAWING NO.:

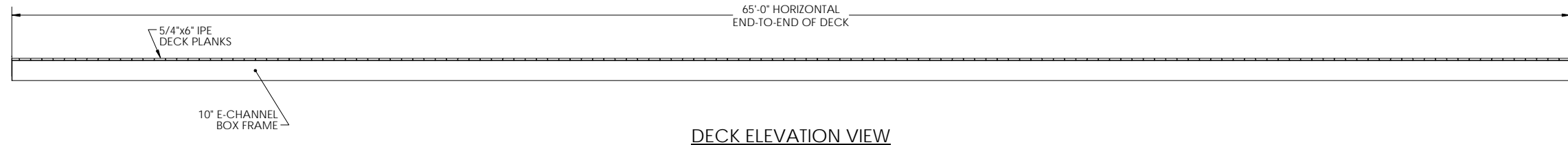
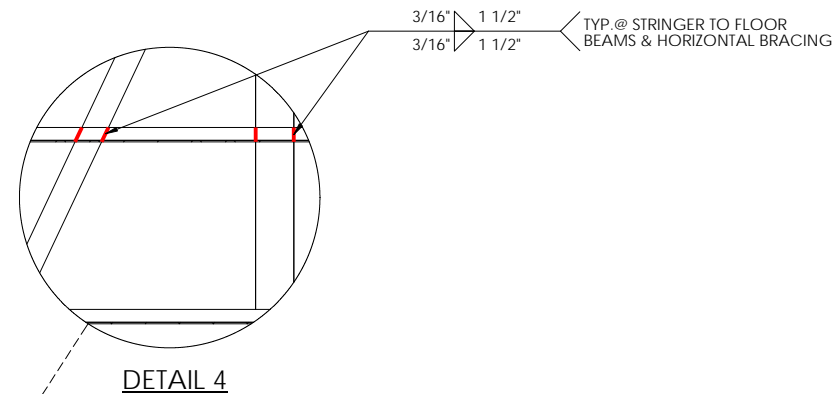
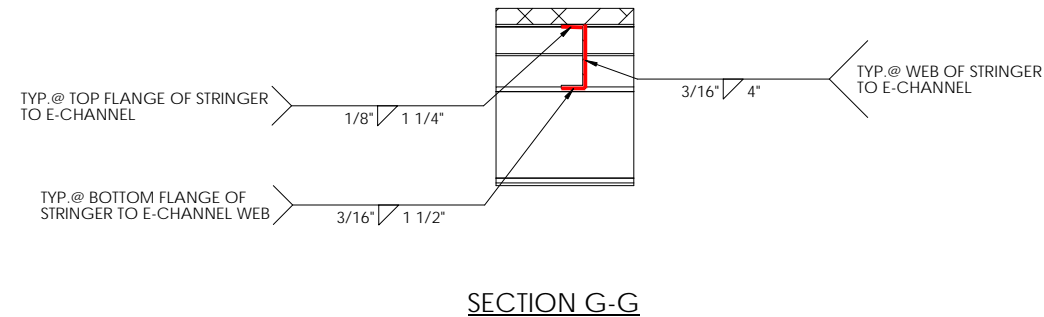
S-5

BRIDGE DECK DETAILS

TOLERANCES UNLESS SPECIFIED OTHERWISE
XXX = $\pm 1/4"$; FRACTIONS = $\pm 1/8"$; ANGULAR = $\pm 1^\circ$

CMI LIMITED CO.
1165 NORTHCHASE PARKWAY SE
SUITE 300 - MARIETTA, GA 30067
PHONE: 770-933-8166

FOR REVIEW



RECORD OF REVISIONS

No.	DATE	DESCRIPTION
0	08/02/17	DRAFT CONCEPT
1	10/12/17	UPDATED CONCEPT

PROJECT NAME:

LINCOLN COURT PEDESTRIAN BRIDGE

CUSTOMER NAME:

**BERGERON LAND
DEVELOPMENT, INC.**

CUSTOMER ADDRESS:

19612 SW 69TH PLACE
FORT LAUDERDALE, FL

PROJECT LOCATION:

LINCOLN COURT
MIAMI BEACH, FL

CMI ORDER NO.:

142559

CUSTOMER PO NO.:

	NAME	DATE
DRAWN BY:	MKL	10/12/17
CHECKED BY:	CBB	10/12/17
FABRICATION:	X	X

DRAWING NO.:

S-6

CABLE RAIL DETAILS

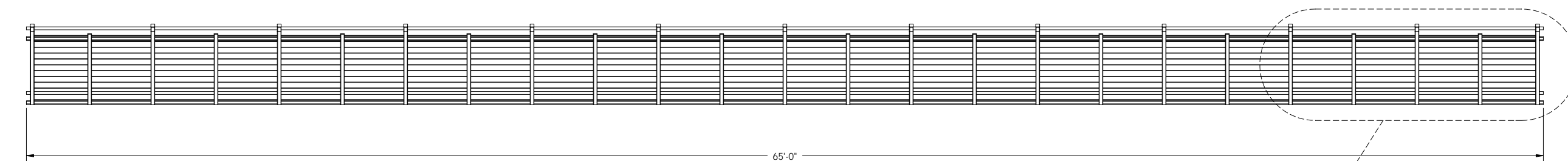
[illegible]

TOLERANCES UNLESS SPECIFIED OTHERWISE
XXX = + 1/4"; FRACTIONS = + 1/8"; ANGULAR = + 1°

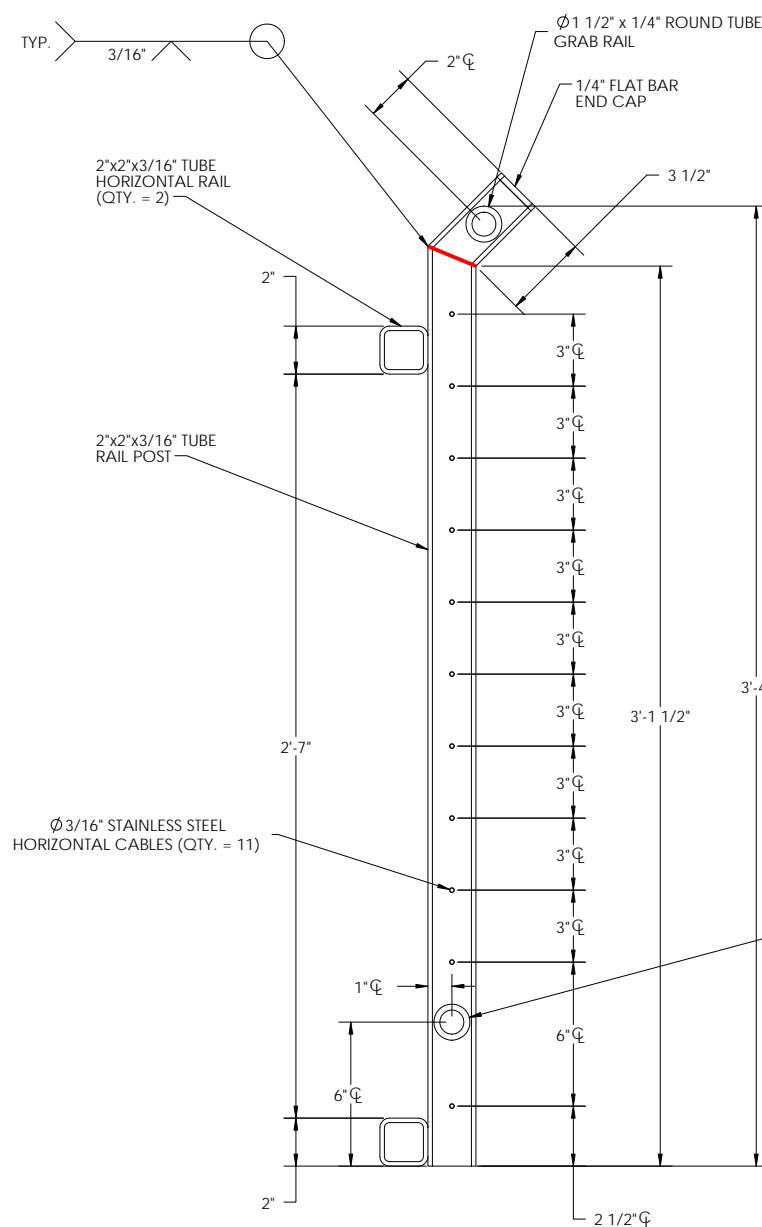
CMI LIMITED CO.
1165 NORTHCHASE PARKWAY SE
SUITE 300 - MARIETTA, GA 30067
PHONE: 770-933-8166

CUSTOMER
INITIAL

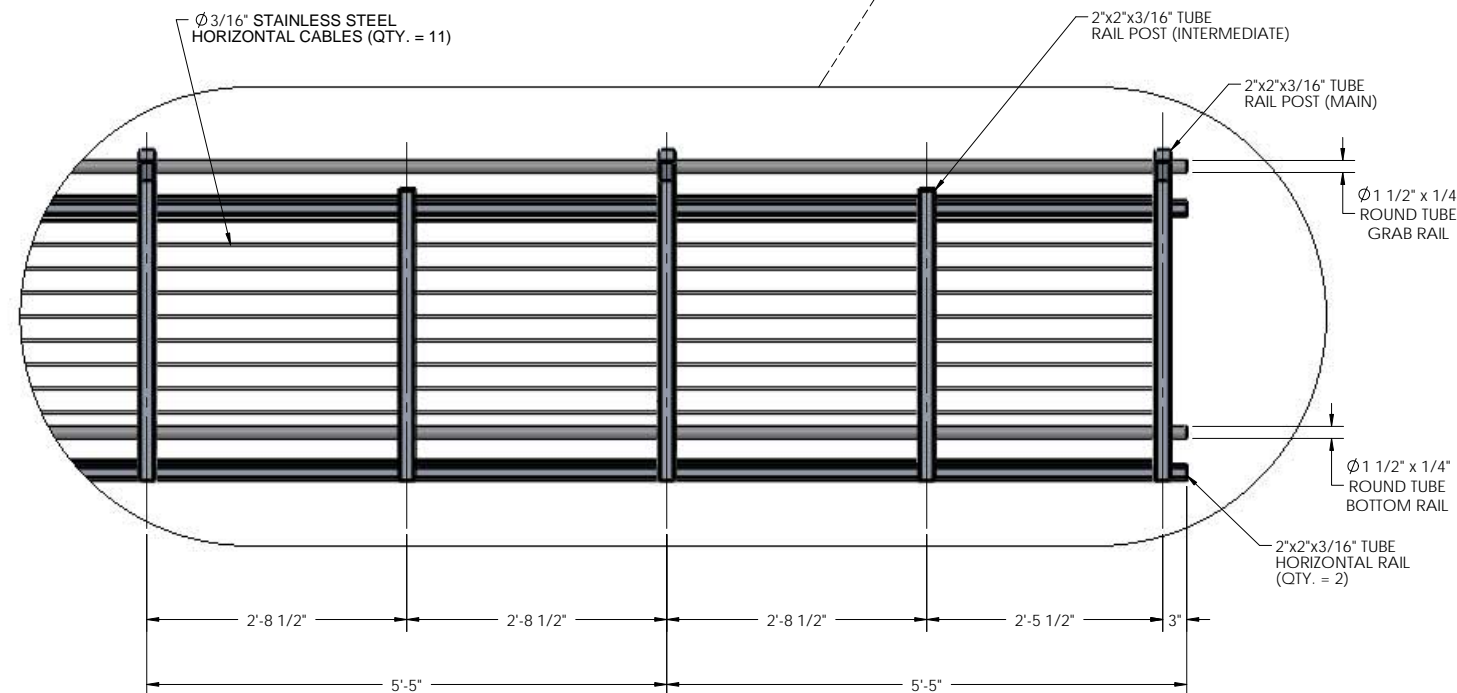
NOT FOR CONSTRUCTION



RAIL ELEVATION VIEW
(LOOKING AT INSIDE FACE)
(QUANTITY x2)

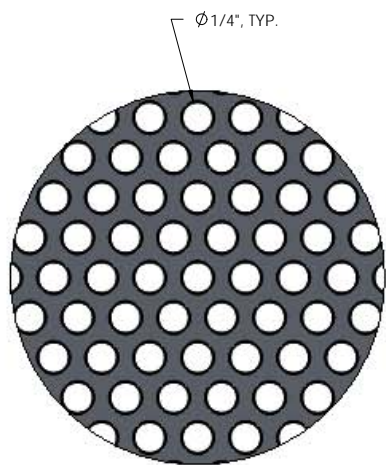
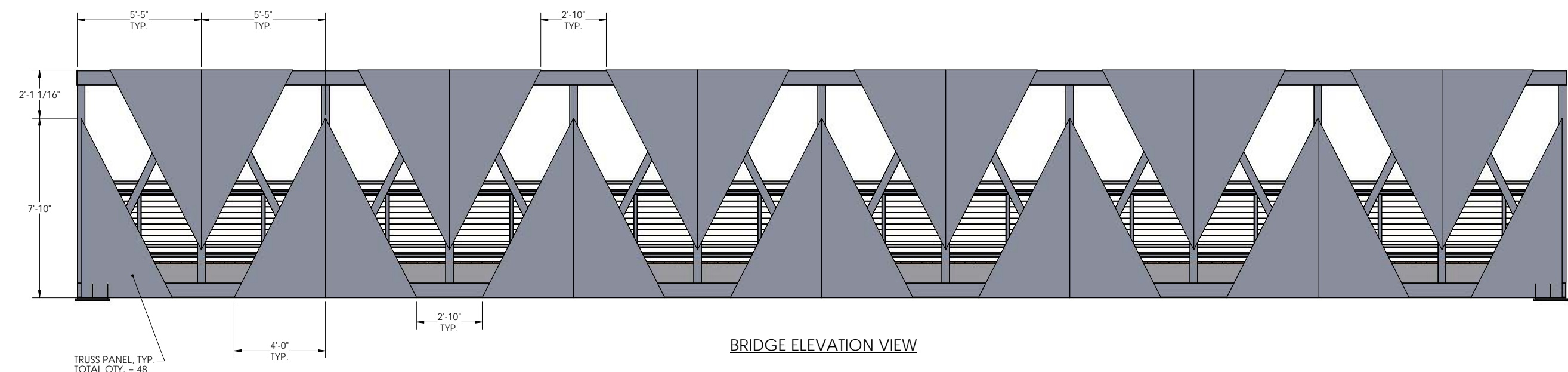
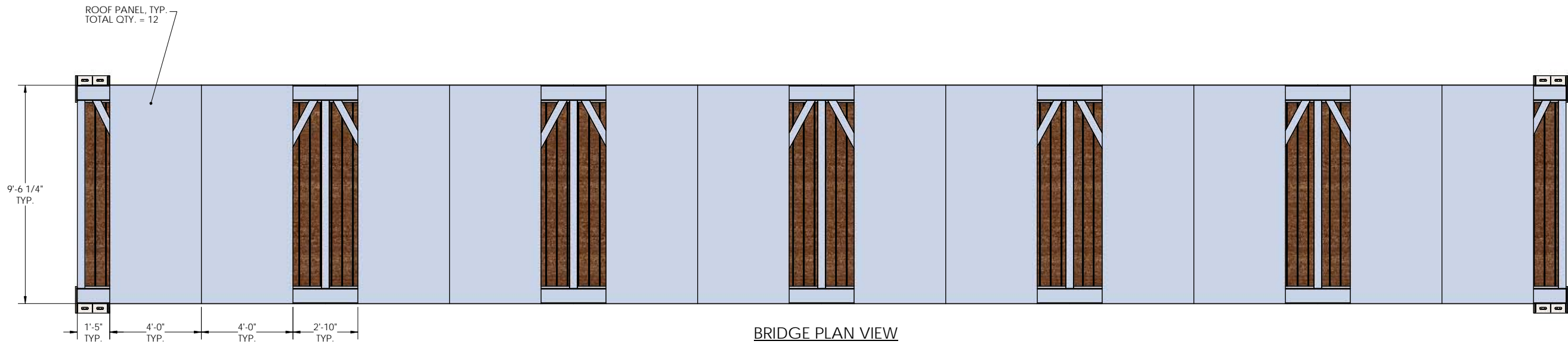


RAIL CROSS SECTION - INTERMEDIATE
(QTY = 24)



END DETAIL
(LOOKING AT INSIDE FACE)

- NOTES:**
- DEBURR ALL EXPOSED WELDS WHICH MAY COME IN CONTACT WITH PEDESTRIANS
 - REFERENCE S-4 FOR LENGTHS & PANEL SPACINGS
 - RAIL POSTS ALIGNED WITH TRUSS VERTICALS & END POSTS; INTERMEDIATE RAIL POSTS AT EACH PANEL CENTER
 - INTERMEDIATE RAIL POSTS MAY BE STRAIGHT VERTICAL WITH INCREASE SIZE OF GRABRAIL FOR CONTINUOUS PANEL SPAN



- NOTES:
1. ROUND PERFORATIONS STAMPED INTO .125 GAUGE ALUMINUM PANEL
 2. PANEL: ALUMINUM TYPE 5052-H32
 3. 1/4" ROUND HOLE ON 3/8" STAGGER
 4. PANEL WEIGHT = 1.07 #/SF
 5. NOTE TO FABRICATOR: ORDER SHEET SIZE 48" x 120", CUT TO SIZE
 6. FRAME PERFORATED SHEET PANEL WITH ANGLE ALUMINUM FOR RIGIDITY AND INSTALLATION - WELD FRAME TO TRUSS.
 7. COLOR SHOWN FOR ILLUSTRATIVE PURPOSES ONLY. BRIDGE AND PANELS TO BE POWDER COATED "SIGNAL WHITE".



2880 MELLONVILLE AVE, SANFORD, FL 32773
800/256-8857 407/323-0190

THE INFORMATION CONTAINED IN THIS DRAWING IS THE SOLE PROPERTY OF GATOR DOCK & MARINE, LLC. ANY REPRODUCTION IN PART OR AS A WHOLE WITHOUT THE WRITTEN PERMISSION OF GATOR DOCK & MARINE, LLC IS PROHIBITED.

RECORD OF REVISIONS		
No.	DATE	DESCRIPTION
0	08/02/17	DRAFT CONCEPT
1	10/12/17	UPDATED CONCEPT

PROJECT NAME:

**LINCOLN COURT
PEDESTRIAN BRIDGE**

CUSTOMER NAME:

**BERGERON LAND
DEVELOPMENT, INC.**

CUSTOMER ADDRESS:

19612 SW 69TH PLACE
FORT LAUDERDALE, FL

PROJECT LOCATION:

LINCOLN COURT
MIAMI BEACH, FL

CMI ORDER NO.:

142559

CUSTOMER PO NO.:

	NAME	DATE
DRAWN BY:	MKL	10/12/17
CHECKED BY:	CBB	10/12/17
FABRICATION:	X	X

DRAWING NO.:

S-7

**ALUMINUM PANELING
DETAILS**

Physical properties are defined by ASTM testing standards. The Aluminum Association Design Manual, The Naval Facilities Design Manual DM 7.2, and The US Army Corps of Engineers General Design Guide: PVC Sheet Film and/or standard engineering practices. The values shown are nominal and may vary. The information found in this document is believed to be true and accurate. No warranties of any kind are made as to the suitability of any CMI product for particular applications or the results obtained there from. ShoreGuard®, The ShoreGuard Seawall System™, C-Lox®, TimberGuard®, GroGuard®, Dura Dock®, Shore Alert®, GatorGates®, GatorDock Elite®, ArmorWalls®, ArmorGuard®, Box Piling®, UltraComp®, The Steel Alternative®, Elite Wall®, Elite Panel®, Elite Fascia Panel®, FlatPanel®, XCR®, XCR Technology™, XCR Vinyl®, GatorBridge®, Galvalume®, Gator Sheet Piling®, GatorDeck®, 1 Main Deck®, Textured Steel®, Crane Materials International®, Logo, CMI Sheet Piling Solutions™, Aqua Terra System™, Endurance™, Endurance CSP™, Polaris™, Eclipse™, GirdGuard™, 21 Poly®, PolyClear™, ShoreScape®, ShoreScape Retaining Wall Systems™, Sheer Panel® and CMI Waterfront Solutions™ are trademarks, service marks or trade names of CMI Limited Co. CMI Limited Co. products are covered by one or more of the following U.S. Patents and International Patents: 4,674,931; 4,690,588; 5,292,208; 5,345,287; 6,000,883; 6,053,155; 6,053,666; 6,020,154; 6,275,667; 7,299,807; 7,986,066; 7,025,539; 7,393,482; 5,505,005; 5,803,670; 6,231,771; 1,249,063CA; 7,014,237 and other patents pending. © 2005-2017 CMI Limited Co. All Rights Reserved.

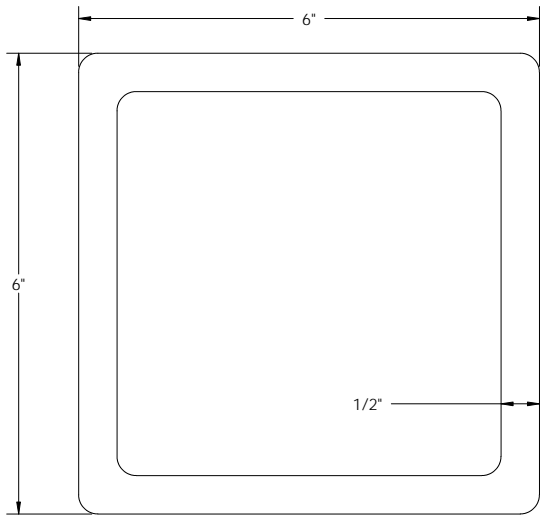
TOLERANCES UNLESS SPECIFIED OTHERWISE
XXX = ± 1/4"; FRACTIONS = ± 1/8"; ANGULAR = ± 1°

CMI LIMITED CO.
1165 NORTHCHASE PARKWAY SE
SUITE 300 - MARIETTA, GA 30067
PHONE: 770-933-8166

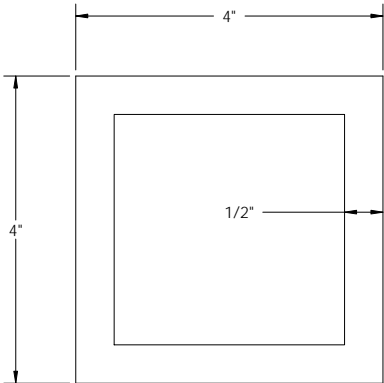
CUSTOMER
INITIAL

FOR
REVIEW

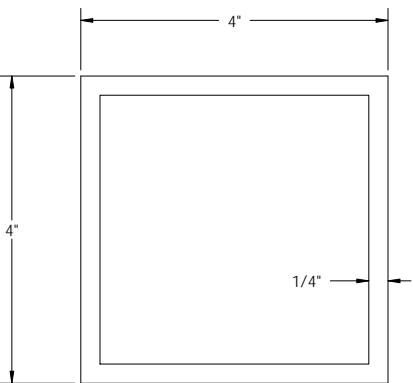
NOT FOR CONSTRUCTION



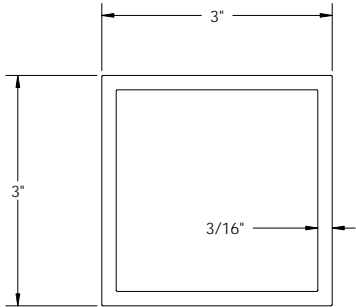
6"x6"x1/2" TUBE



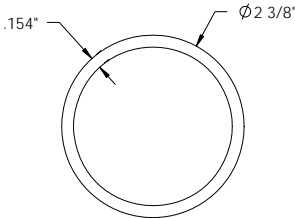
4"x4"x1/2" TUBE



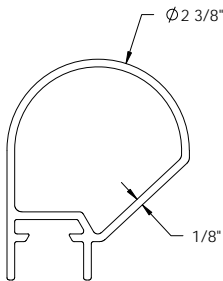
4"x4"x1/4" TUBE



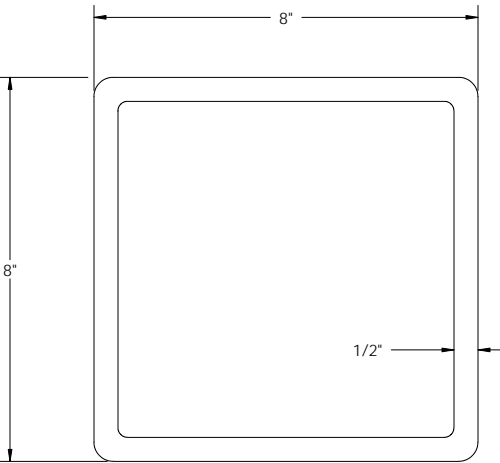
3"x3"x3/16" TUBE



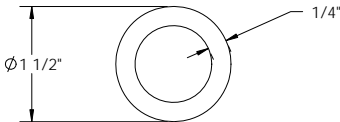
2" SCH. 40 END HOOP



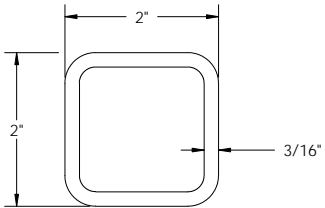
PICKET HAND RAIL/
BOTTOM RAIL



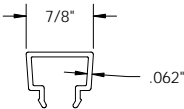
8"x8"x1/2" TUBE
NOT TO SCALE



1-1/2"x1/4"
ROUND TUBE



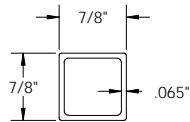
2"x2"x3/16" TUBE



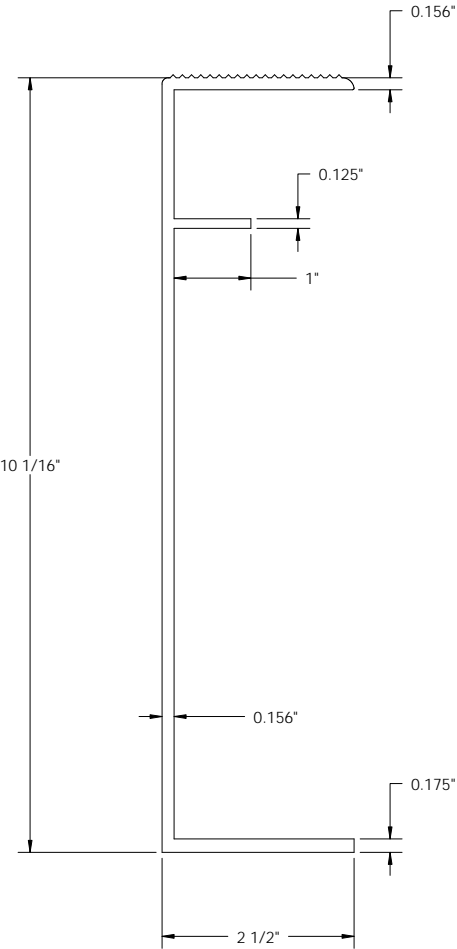
PICKET SPACER



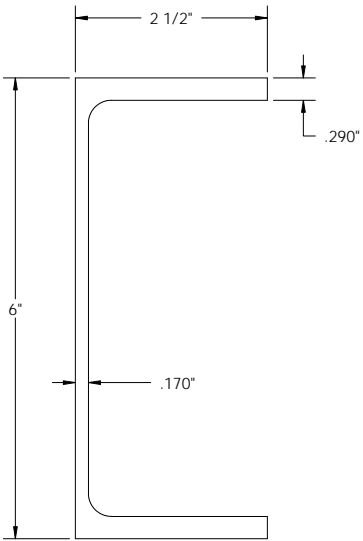
5/4"x6" IPE DECK PLANKS



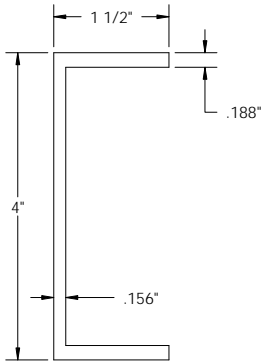
7/8" PICKET



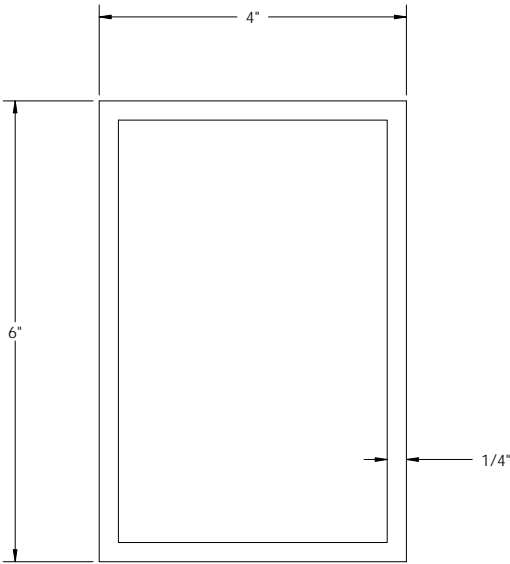
10" E-CHANNEL



6"x2 1/2" C-CHANNEL



4"x1 1/2" C-CHANNEL



6"x4"x1/4" TUBE

CUSTOMER
INITIAL

FOR
REVIEW

NOT FOR CONSTRUCTION



2880 MELLONVILLE AVE, SANFORD, FL 32773
800/256-8857 407/323-0190

THE INFORMATION CONTAINED IN THIS DRAWING IS THE SOLE PROPERTY OF GATOR DOCK & MARINE, LLC. ANY REPRODUCTION IN PART OR AS A WHOLE WITHOUT THE WRITTEN PERMISSION OF GATOR DOCK & MARINE, LLC IS PROHIBITED.

RECORD OF REVISIONS		
No.	DATE	DESCRIPTION
0	08/02/17	DRAFT CONCEPT
1	10/12/17	UPDATED CONCEPT

PROJECT NAME:
**LINCOLN COURT
PEDESTRIAN BRIDGE**

CUSTOMER NAME:
**BERGERON LAND
DEVELOPMENT, INC.**

CUSTOMER ADDRESS:
19612 SW 69TH PLACE
FORT LAUDERDALE, FL

PROJECT LOCATION:
LINCOLN COURT
MIAMI BEACH, FL

CMI ORDER NO.:
142559

CUSTOMER PO NO.:

	NAME	DATE
DRAWN BY:	MKL	10/12/17
CHECKED BY:	CBB	10/12/17
FABRICATION:	X	X

DRAWING NO.:
S-8
STRUCTURAL
COMPONENT DETAILS

Physical properties are defined by ASTM testing standards. The Aluminum Association Design Manual, The Naval Facilities Design Manual DM 7-2, and The US Army Corps of Engineers General Design Guide: PVC Sheet Pile and/or standard engineering practice. The values shown are nominal and may vary. The information found in this document is believed to be true and accurate. No warranties of any kind are made as to the suitability of any CMI product for particular applications or the results obtained there from. ShoreGuard®, The ShoreGuard Seawall System™, E-Lox®, TimberGuard®, GeoGuard®, Dura Deck®, Shore Alert®, GatorGates®, GatorDock Elite®, ArmorBarge®, ArmorBarge® Box Pallet®, UltraComposite™, The Steel Alternative®, Elite Wall™, Elite Panel™, Elite Fascia Panel™, FlatPanel™, XCR™, XCR Technology™, XCR Vinyl™, GatorBridge®, GatorAluminum™, Gator Sheet Piling®, GatorDeck®, i-Max™, i-Max i-Box™, Textured Stone™, i-Max Marine™, International™, Logo, CMI Sheet Piling Solutions™, Aqua Terra System™, Endurance™, Endurance CSP™, Polaris™, Eclipse™, GridGuard™, 21 Poly™, PolyCrest™, ShoreScape™, ShoreScape Retaining Wall Systems™, Shore Panel™ and CMI Waterfront Solutions™ are trademarks, service marks or trade names of CMI Limited Co. CMI Limited Co. products are covered by one or more of the following U.S. Patents and International Patents: 4,674,931; 4,690,588; 5,292,208; 5,345,287; 6,000,883; 6,033,155; 6,033,666; 6,032,154; 6,275,667; 7,299,807; 7,396,066; 7,025,539; 7,393,482; 5,503,090; 5,803,670; 6,311,771; 1,249,063CA; 7,014,237 and other patents pending. © 2005-2017 CMI Limited Co. All Rights Reserved.

TOLERANCES UNLESS SPECIFIED OTHERWISE
XXX = ± 1/4"; FRACTIONS = ± 1/8"; ANGULAR = ± 1°

CMI LIMITED CO.
1165 NORTHCHASE PARKWAY SE
SUITE 300 - MARIETTA, GA 30067
PHONE: 770-933-8166