

TREE DISPOSITION LIST

ITEM	SCIENTIFIC NAME	COMMON NAME	HEIGHT	DISPOSITION
1	COCOS NUCIFERA	COCONUT PALM	30-35'	REMAIN
2	COCOS NUCIFERA	COCONUT PALM	30-35'	REMAIN
3	COCOS NUCIFERA	COCONUT PALM	30-35'	REMAIN
4	COCOS NUCIFERA	COCONUT PALM	30-35'	REMAIN
5	THRINAX RADIATA	FLORIDA THATCH PALM	8'	REMAIN
6	COCOS NUCIFERA	COCONUT PALM	30-35'	REMAIN
7	COCOS NUCIFERA	COCONUT PALM	30-35'	REMAIN
8	COCOS NUCIFERA	COCONUT PALM	30-35'	REMAIN
9	PHOENIX CANARIENSIS	CANARY ISLAND DATE PALM	30-35'	REMAIN
10	PHOENIX CANARIENSIS	CANARY ISLAND DATE PALM	30-35'	REMAIN
11	PHOENIX CANARIENSIS	CANARY ISLAND DATE PALM	30-35'	REMAIN
12	PHOENIX CANARIENSIS	CANARY ISLAND DATE PALM	30-35'	REMAIN
13	PHOENIX CANARIENSIS	CANARY ISLAND DATE PALM	30-35'	REMAIN
14	PHOENIX CANARIENSIS	CANARY ISLAND DATE PALM	30-35'	REMAIN
15	PHOENIX CANARIENSIS	CANARY ISLAND DATE PALM	30-35'	REMAIN
16	PHOENIX CANARIENSIS	CANARY ISLAND DATE PALM	30-35'	REMAIN
17	PANDANUS BALANSAE	SCREW PINE	14'	REMOVE
18	COCOS NUCIFERA	COCONUT PALM	30-35'	REMAIN
19	COCOS NUCIFERA	COCONUT PALM	30-35'	REMAIN
20	COCOS NUCIFERA	COCONUT PALM	30-35'	REMAIN
21	COCOS NUCIFERA	COCONUT PALM	30-35'	REMAIN
22	COCOS NUCIFERA	COCONUT PALM	30-35'	REMAIN
23	COCOS NUCIFERA	COCONUT PALM	30-35'	REMAIN
24	COCOS NUCIFERA	COCONUT PALM	30-35'	REMAIN
25	COCOS NUCIFERA	COCONUT PALM	30-35'	REMAIN
26	COCOS NUCIFERA	COCONUT PALM	30-35'	REMAIN
27	COCOS NUCIFERA	COCONUT PALM	30-35'	REMAIN
28	COCOS NUCIFERA	COCONUT PALM	30-35'	REMAIN
29	COCOS NUCIFERA	COCONUT PALM	30-35'	REMAIN
30	COCOS NUCIFERA	COCONUT PALM	30-35'	REMAIN
31	COCOS NUCIFERA	COCONUT PALM	30-35'	REMAIN
32	COCOS NUCIFERA	COCONUT PALM	30-35'	REMAIN
33	COCOS NUCIFERA	COCONUT PALM	30-35'	REMAIN
34	COCOS NUCIFERA	COCONUT PALM	30-35'	REMAIN
35	COCOS NUCIFERA	COCONUT PALM	30-35'	REMAIN
36	COCOS NUCIFERA	COCONUT PALM	30-35'	REMAIN
37	COCOS NUCIFERA	COCONUT PALM	30-35'	REMAIN
38	COCOS NUCIFERA	COCONUT PALM	30-35'	REMAIN
39	COCOS NUCIFERA	COCONUT PALM	30-35'	REMAIN
40	COCOS NUCIFERA	COCONUT PALM	30-35'	REMAIN
41	COCOS NUCIFERA	COCONUT PALM	30-35'	REMAIN
42	COCOS NUCIFERA	COCONUT PALM	30-35'	REMAIN
43	PHOENIX CANARIENSIS	CANARY ISLAND DATE PALM	30-35'	REMAIN
44	PHOENIX CANARIENSIS	CANARY ISLAND DATE PALM	30-35'	REMAIN
45	PHOENIX CANARIENSIS	CANARY ISLAND DATE PALM	30-35'	REMAIN
46	PHOENIX CANARIENSIS	CANARY ISLAND DATE PALM	30-35'	REMAIN
47	PHOENIX CANARIENSIS	CANARY ISLAND DATE PALM	30-35'	REMAIN

CITY OF MIAMI BEACH - TREE REPLACEMENT CHART

ITEM	SCIENTIFIC NAME	COMMON NAME	AREA IN S.F.	SPECIMEN MITIGATION REQUIREMENTS	TOTAL S.F.
17	PANDANUS BALANSAE*	SCREW PINE	133	2 TIMES AREA	266
TOTAL AREA REQUIRING MITIGATION					266

NOTES:

1. *DENOTES SPECIMEN TREE, PER CITY OF MIAMI BEACH DEFINITION SEC. 46-56
2. OWNER TO PROVIDE CONTRIBUTION TO CITY OF MIAMI BEACH TREE PRESERVATION TRUST FUND, PER CITY OF MIAMI BEACH CODE SEC. 46-61.6.A

TREE DISPOSITION PLAN

SCALE: 1/16" = 1'-0"



RITZ CARLTON HOTEL

1 LINCOLN ROAD MIAMI BEACH, FL. 33139

HISTORIC PRESERVATION BOARD SUBMITTAL

MARCH 03, 2016 : FIRST SUBMITTAL / MARCH 17, 2016 : REVISION #1 / MARCH 21ST, 2016 : FINAL SUBMITTAL

E o A , I n c | 1929 Ponce de Leon Blvd., Coral Gables, Florida 33146 | 3 0 5 . 4 4 4 . 0 9 9 0 | State of Florida Architect of Record Malcolm Berg, AIA License No. AR94424



sheet no.

L-1.0

SCALE: AS NOTED



1. MEDIAN PLANTING IMPROVEMENTS
2. NATIVE SPECIMEN TREES
3. ARRIVAL PAVING FIELD
4. SCULPTURAL BENCH
5. PEDESTRIAN TRANSITION
6. PAVING FIELD TO MATCH INTERIOR
7. MONUMENT SIGN
8. BACK FLOW PREVENTERS AND WATER METERS
9. PROPOSED COCONUT PALM TREES
10. EXISTING DATE PALM TREES

SITE PLAN
SCALE: 1/16" = 1'-0"



RITZ CARLTON HOTEL
1 LINCOLN ROAD MIAMI BEACH, FL. 33139
 HISTORIC PRESERVATION BOARD SUBMITTAL

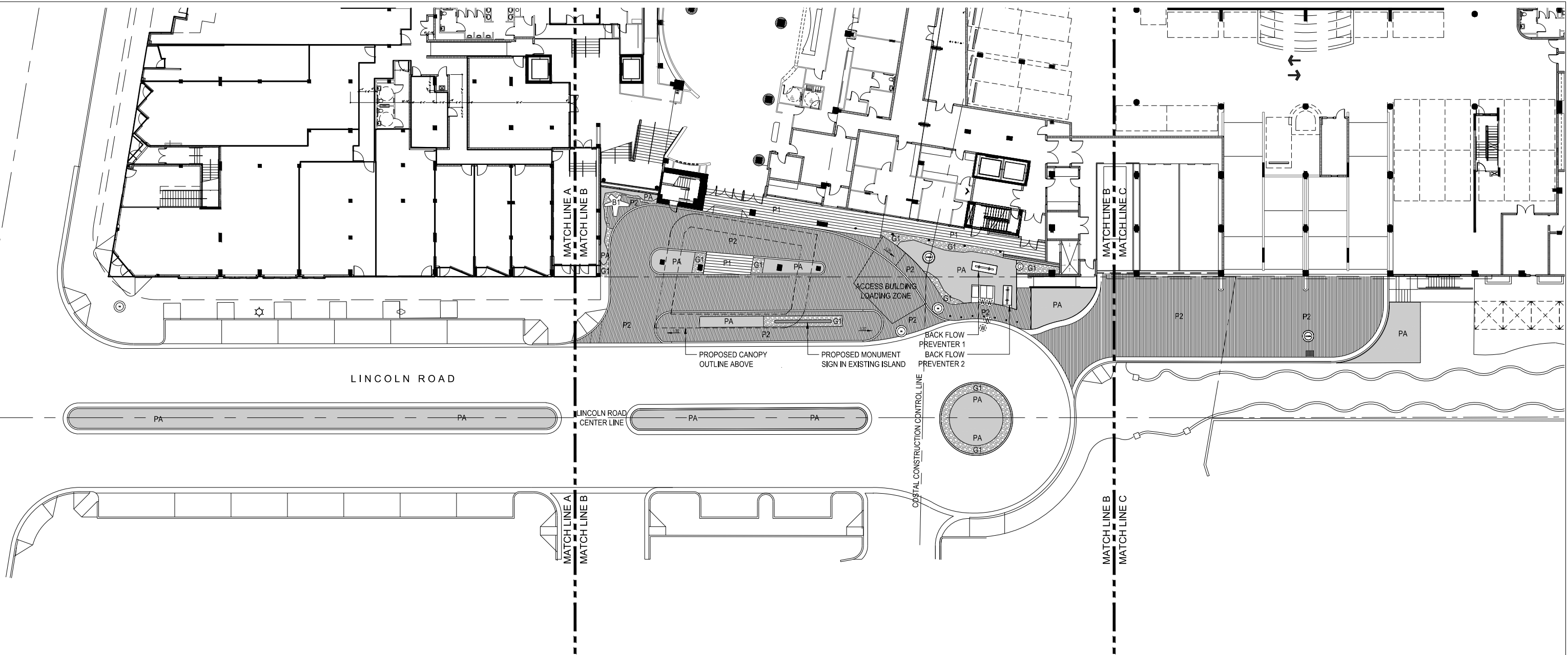
MARCH 03, 2016 : FIRST SUBMITTAL / MARCH 17, 2016 : REVISION #1 / MARCH 21ST, 2016 : FINAL SUBMITTAL

E o A , I n c | 1929 Ponce de Leon Blvd., Coral Gables, Florida 33146 | 3 0 5 . 4 4 4 . 0 9 9 0 | State of Florida Architect of Record Malcolm Berg, AIA License No. AR94424



sheet no.
L-2.0

SCALE: AS NOTED



PAVING MATERIAL LEGEND

P1		STONE PAVERS TO MATCH LOBBY FLOOR COLOR
P2		ASPHALT BLOCK PAVERS BY HANOVER 6"x6"x3"
G1		WHITE RIVER ROCK
PA		PLANTING AREA
B1		PROPOSED FLOR BENCH BY LANDSCAPE FORMS

HARDSCAPE PLAN
SCALE: 1/16" - 1'-0"



RITZ CARLTON HOTEL
1 LINCOLN ROAD MIAMI BEACH, FL. 33139
HISTORIC PRESERVATION BOARD SUBMITTAL

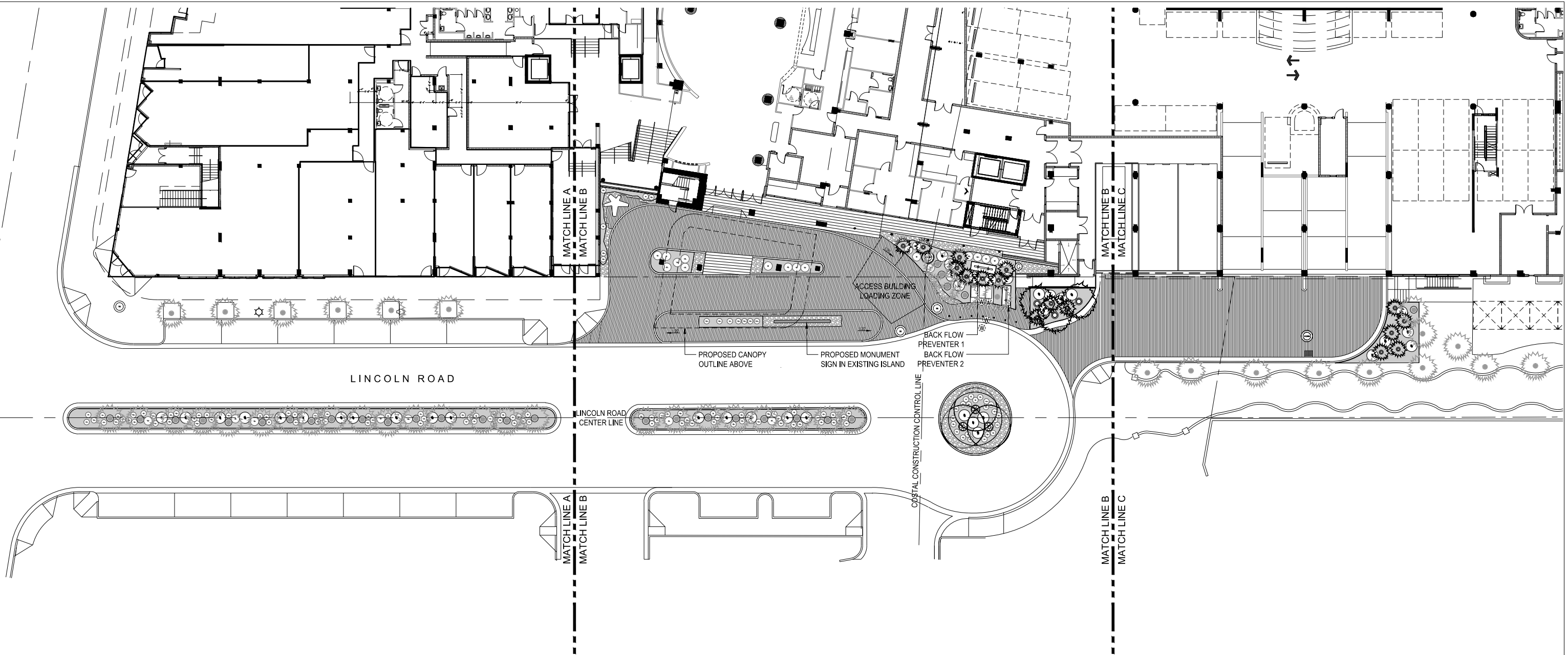
MARCH 03, 2016 : FIRST SUBMITTAL / MARCH 17, 2016 : REVISION #1 / MARCH 21ST, 2016 : FINAL SUBMITTAL

E o A , I n c | 1929 Ponce de Leon Blvd., Coral Gables, Florida 33146 | 3 0 5 . 4 4 4 . 0 9 9 0 | State of Florida Architect of Record Malcolm Berg, AIA License No. AR94424



sheet no.
L-2.1

SCALE: AS NOTED



PAVING MATERIAL LEGEND

P1		STONE PAVERS TO MATCH LOBBY FLOOR COLOR
P2		ASPHALT BLOCK PAVERS BY HANOVER 6"x6"x3"
G1		WHITE RIVER ROCK
PA		PLANTING AREA
B1		PROPOSED FLOR BENCH BY LANDSCAPE FORMS

OVERALL LANDSCAPE PLAN
SCALE: 1/16" - 1'-0"



RITZ CARLTON HOTEL
1 LINCOLN ROAD MIAMI BEACH, FL. 33139
HISTORIC PRESERVATION BOARD SUBMITTAL

MARCH 03, 2016 : FIRST SUBMITTAL / MARCH 17, 2016 : REVISION #1 / MARCH 21ST, 2016 : FINAL SUBMITTAL

E o A , I n c | 1929 Ponce de Leon Blvd., Coral Gables, Florida 33146 | 3 0 5 . 4 4 4 . 0 9 9 0 | State of Florida Architect of Record Malcolm Berg, AIA License No. AR94424



sheet no.

L-2.2

SCALE: AS NOTED

PAVING MATERIAL LEGEND

P1

STONE PAVERS TO MATCH LOBBY FLOOR COLOR

P2

ASPHALT BLOCK PAVERS BY HANOVER 6"X6"X3"

G1

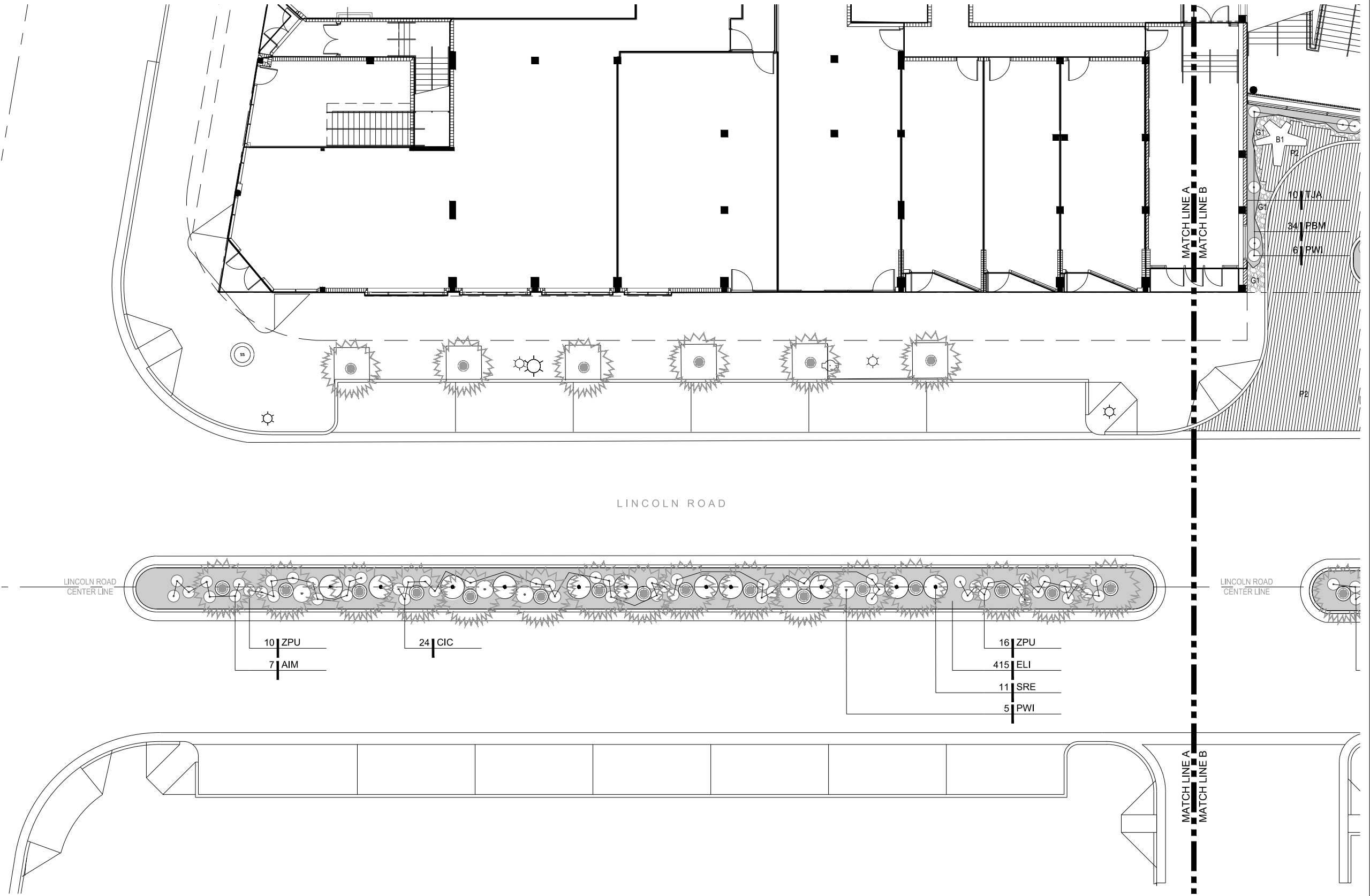
WHITE RIVER ROCK

PA

PLANTING AREA

B1

PROPOSED FLOR BENCH BY LANDSCAPE FORMS



LANDSCAPE ENLARGEMENT PLAN

SCALE: 1/8" = 1'-0"



RITZ CARLTON HOTEL

1 LINCOLN ROAD MIAMI BEACH, FL. 33139

HISTORIC PRESERVATION BOARD SUBMITTAL

MARCH 03, 2016 : FIRST SUBMITTAL / MARCH 17, 2016 : REVISION #1 / MARCH 21ST, 2016 : FINAL SUBMITTAL

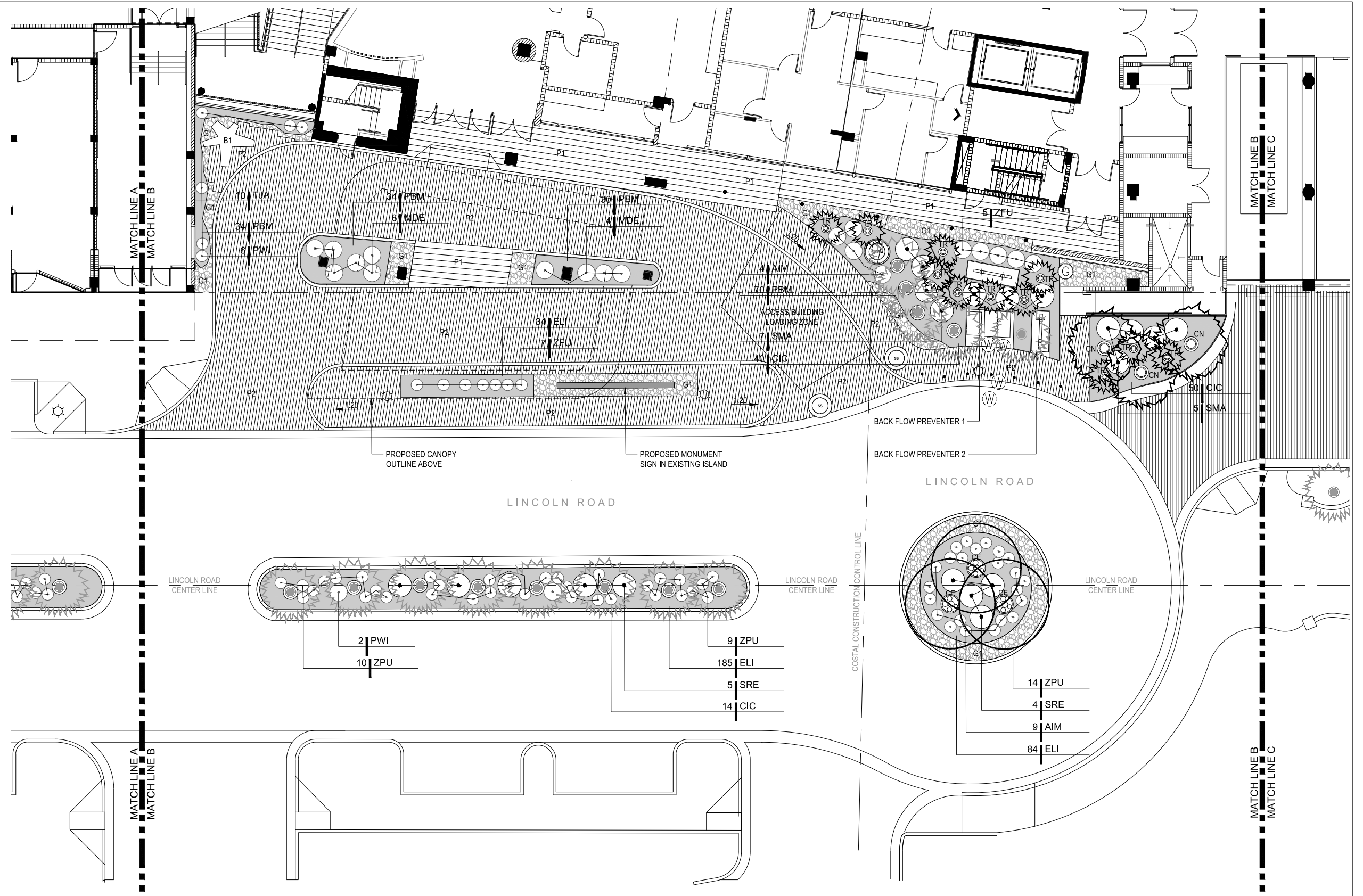
E o A , I n c | 1929 Ponce de Leon Blvd., Coral Gables, Florida 33146 | 3 0 5 . 4 4 4 . 0 9 9 0 | State of Florida Architect of Record Malcolm Berg, AIA License No. AR94424



sheet no.

L-2.3

SCALE: AS NOTED



EOA
edge of architecture

L-2.4

SCALE: AS NOTED

PAVING MATERIAL LEGEND

P1

STONE PAVERS TO MATCH LOBBY FLOOR COLOR

P2

ASPHALT BLOCK PAVERS BY HANOVER 6"X6"X3"

G1

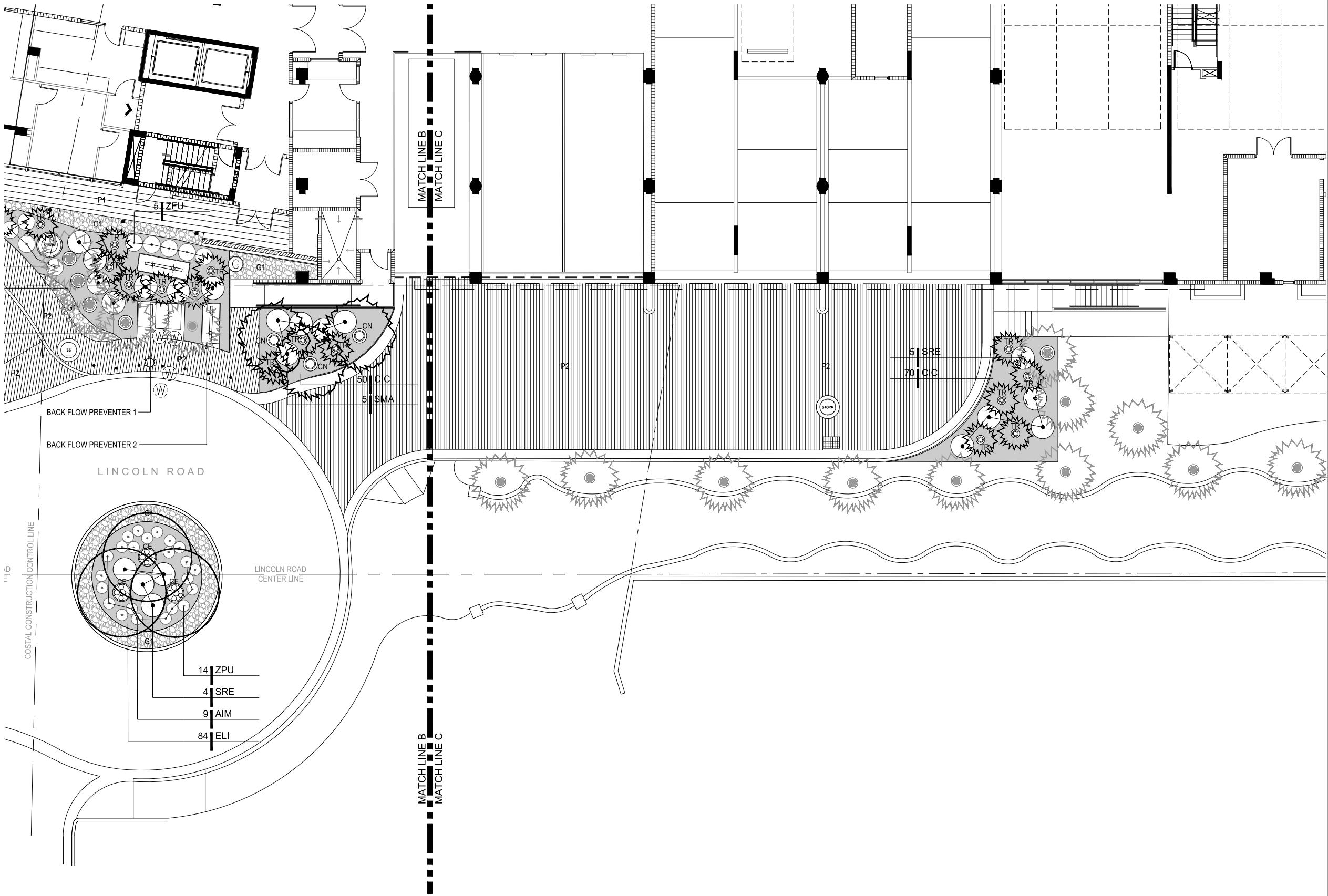
WHITE RIVER ROCK

PA

PLANTING AREA

B1

PROPOSED FLOR BENCH BY LANDSCAPE FORMS



LANDSCAPE ENLARGEMENT PLAN

SCALE: 1/8" = 1'-0"



RITZ CARLTON HOTEL

1 LINCOLN ROAD MIAMI BEACH, FL. 33139

HISTORIC PRESERVATION BOARD SUBMITTAL

MARCH 03, 2016 : FIRST SUBMITTAL / MARCH 17, 2016 : REVISION #1 / MARCH 21ST, 2016 : FINAL SUBMITTAL

E o A , I n c | 1929 Ponce de Leon Blvd., Coral Gables, Florida 33146 | 3 0 5 . 4 4 4 . 0 9 9 0 | State of Florida Architect of Record Malcolm Berg, AIA License No. AR94424

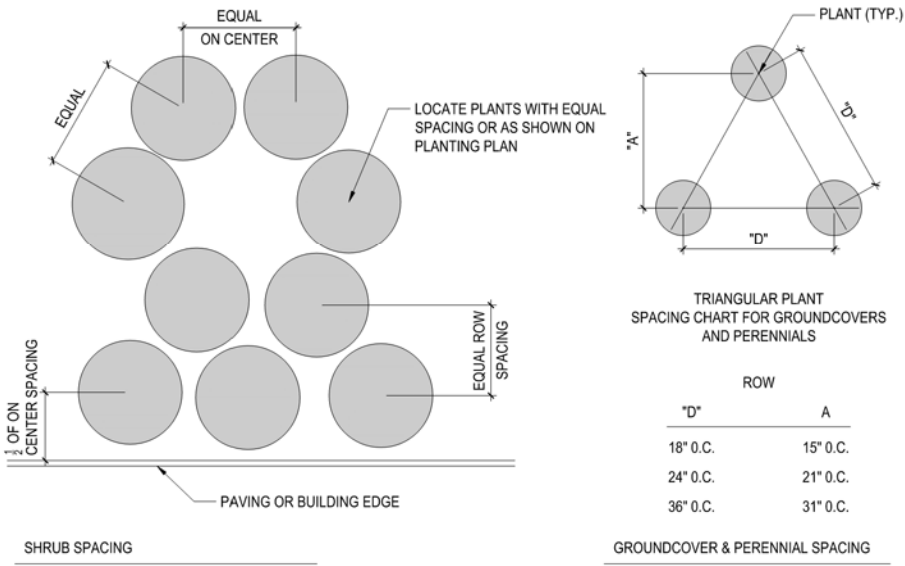


sheet no.

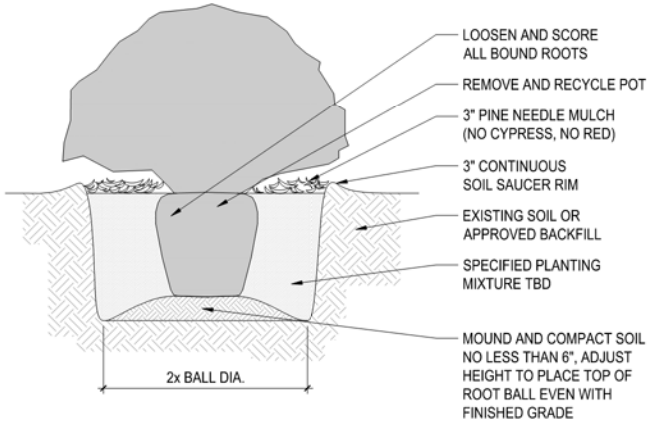
L-2.5

SCALE: AS NOTED

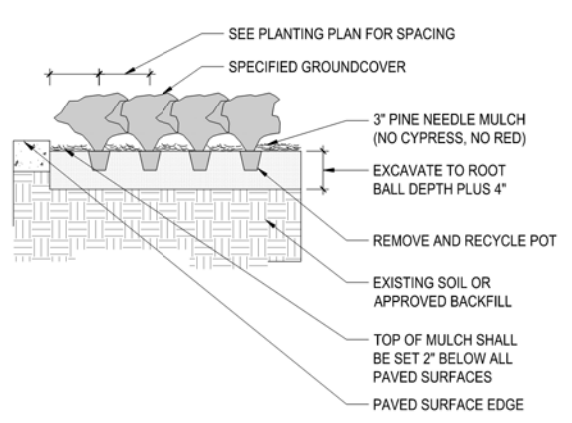
THE RITZ CARLTON - PLANT LIST				
* Denotes Florida Native Species				
Plants installed pursuant to this Code shall conform to, or exceed, the minimum standards for Florida Number One as provided in the most current edition of "Grades and Standards for Nursery Plants, Part I and II," prepared by the State of Florida Department of Agriculture and Consumer Services.				
QUANTITY	SYMBOL	BOTANICAL NAME	COMMON NAME	SIZE
PALMS				
3	CN	COCOS NUCIFERA 'GREEN MALAYAN'	COCONUT PALM	FIELD GROWN, 14-24' GW., HEAVY TRUNK
16	TR	* THRINAX RADIATA	FLORIDA THATCH PALM	15 GALLON 5-6' PLANTED HT. MIN., FULL HEAD
TREES				
3	CE	* CONOCARPUS ERECTUS 'GREEN'	GREEN BUTTOWOOD	FIELD GROWN, 15' HT. X 7' SP. X 5' TRUNK MIN., MULTI-TRUNK SPECIMEN
ACCENTS				
20	AIM	ALCANTAREA IMPERIALIS	IMPERIAL BROMELIAD	15 GALLON 36" PLANTED HT. MIN.
13	PWI	PHILODENDRON WILSONII	PHILODENDRON WILSONII	7 GALLON 36" PLANTED HT. MIN., FULL WITH MATURE LEAFS
10	MDE	MONSTERA DELICIOSA	MEXICAN BREADFRUIT	7 GALLON 36" PLANTED HT. MIN., FULL WITH MATURE LEAFS
25	SRE	* SERENOA REPENS 'CINEREA'	SILVER SAW PALMETTO	15 GALLON 36" PLANTED HT. MIN., FULL TO BASE
7	ZFU	* ZAMIA FURFURACEA	CARDBOARD PALM	7 GALLON 30" PLANTED HT. MIN., FULL TO BASE
59	ZPU	* ZAMIA PUMILA	COONTIE	7 GALLON 24" PLANTED HT. MIN., FULL HEAD
SHRUBS				
12	SMA	* SURIANA MARITIME	BAY CEDAR	15 GALLON 6' PLANTED HT. MIN., FULL TO BASE
GROUND COVER				
198	CIC	* CHRYSOBALANUS ICACO 'HORIZONTAL'	HORIZONTAL COCOPLUM	3 GALLON 18" PLANTED HT. MIN., FULL TO BASE, 24" O.C.
718	ELI	* ERNODEA LITTORALIS	GOLDEN BEACH CREEPER	1 GALLON 10" PLANTED HT. MIN., FULL TO BASE, 16" O.C.
TBD	MSC	MICROSORUM SCOLOPENDRIUM	WART FERN	1 GALLON 10" PLANTED HT. MIN., FULL TO BASE, 15" O.C.
TBD	OJA	OPHIOPOGON JAPONICUS	DWARF MONDO GRASS	1 GALLON 6" PLANTED HT. MIN., FULL, 6" O.C.
168	PBM	PHILODENDRON 'BURLE MARX'	BURLE MARX PHILODENDRON	3 GALLON 18" PLANTED HT. MIN., FULL TO BASE, 16" O.C.
TBD	POB	PEPEROMIA OBTUSIFOLIA	BABY RUBBER PLANT	1 GALLON 8" PLANTED HT. MIN., FULL TO BASE, 12" O.C.
VINES				
10	TJA	TRACHELOSPERMUM JASMINIODES	CONFEDERATE JASMINE	15 GALLON, 5-6' HT., FULL, ATTACHED TO WIRE TRELLIS SYSTEM
MISCELLANEOUS				
TBD			RECYCLED MULCH	NO CYPRESS MUCH, QUANTITY TO BE CALCULATED BY CONTRACTOR
SOD			STENOTAPHRUM SECUNDATUM	SAINT AUGUSTINE GRASS
TBD				WHITE RIVER ROCK
TBD				CRUSHED CORAL STONE



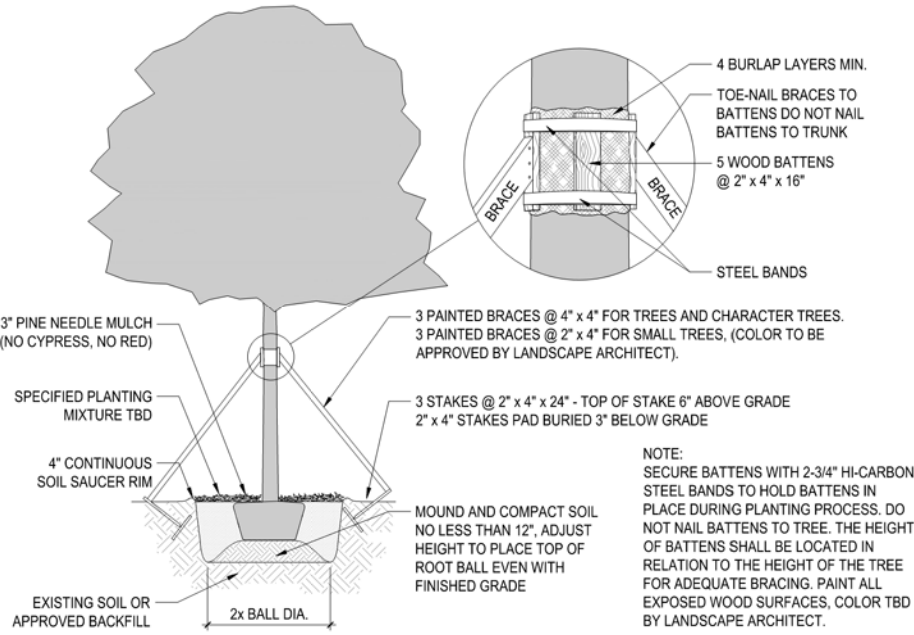
3 SHRUB AND GROUNDCOVER SPACING DETAIL
SCALE: N.T.S.



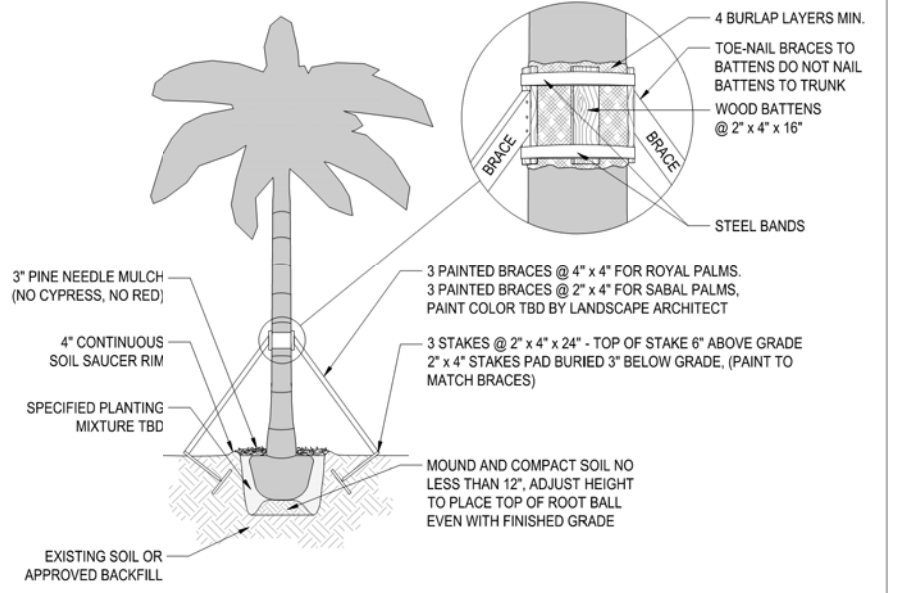
1 SHRUB PLANTING DETAIL
SCALE: N.T.S.



2 GROUNDCOVER PLANTING DETAIL
SCALE: N.T.S.



4 TREE PLANTING DETAIL
SCALE: N.T.S.



5 PALM PLANTING DETAIL
SCALE: N.T.S.

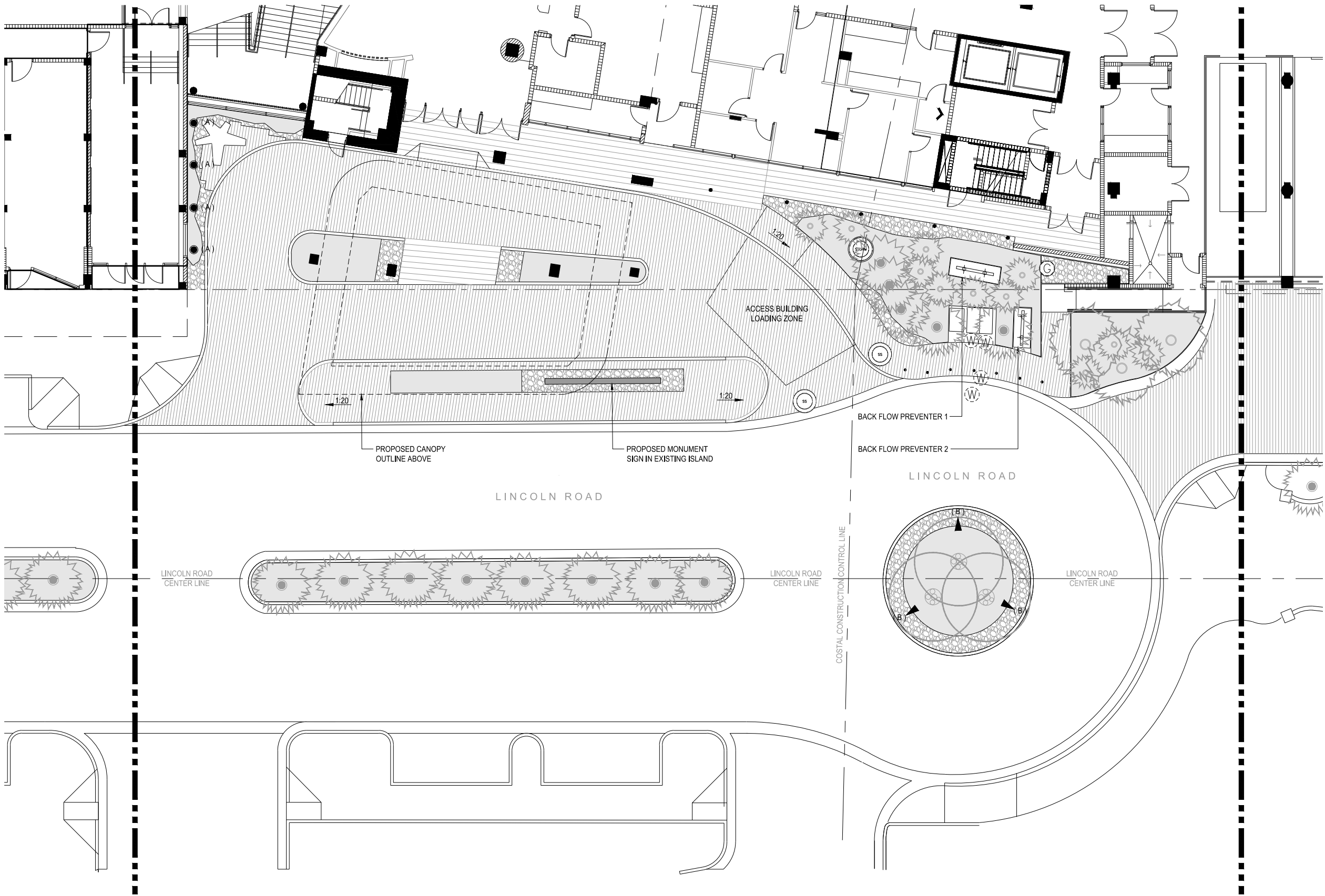
PLANT LIST AND DETAILS
AS SHOWN



RITZ CARLTON HOTEL
1 LINCOLN ROAD MIAMI BEACH, FL. 33139
HISTORIC PRESERVATION BOARD SUBMITTAL

MARCH 03, 2016 : FIRST SUBMITTAL / MARCH 17, 2016 : REVISION #1 / MARCH 21ST, 2016 : FINAL SUBMITTAL

DETAIL SYMBOL	TYPE	QTY
(A)	EXCELSIOR FA-4 FLOOD/ ACCENT LIGHT WITH LED MODULE BY TERRA-LUX	(4)
(B)	EXCELSIOR IN-1 IN-GROUND UP LIGHT WITH LED MODULE BY TERRA-LUX	(3)
NOTES: 1. FIXTURE COLORS TO BE APPROVED BY CLIENT AND LANDSCAPE ARCHITECT 2. ALL TRANSFORMER, WIRING AND ELECTRICAL DESIGN AND SPECIFICATIONS BY ELECTRICAL ENGINEER		



LIGHTING PLAN
SCALE: 1/8" - 1'-0"



RITZ CARLTON HOTEL
1 LINCOLN ROAD MIAMI BEACH, FL. 33139
HISTORIC PRESERVATION BOARD SUBMITTAL

MARCH 03, 2016 : FIRST SUBMITTAL / MARCH 17, 2016 : REVISION #1 / MARCH 21ST, 2016 : FINAL SUBMITTAL

E o A , I n c | 1929 Ponce de Leon Blvd., Coral Gables, Florida 33146 | 3 0 5 . 4 4 4 . 0 9 9 0 | State of Florida Architect of Record Malcolm Berg, AIA License No. AR94424



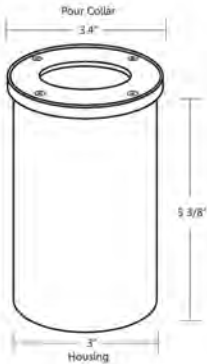
sheet no.
L-3.0

SCALE: AS NOTED

IN-GROUND LIGHT MR16 35W LED 13W MODEL IN-1

Specification-grade direct burial landscape lighting, wet-location luminaire for uplighting applications.

- Machined 6061-T6 copper-free aluminum. Aluminum components are black anodized, then a polyester powder coat finish is applied. Seven standard TGIC powder coat finishes and clear anodized finish available.
- Remote transformer required.
- GY 6.35 bi pin porcelain socket.
- IP 67 rated.
- Tempered glass lens.
- Holds 3 lens accessories.
- Pour collar option available.
- 6 feet of 16/2 low voltage cable supplied.
- Suitable for drive-over installations.
- Warranty: 10 Years.



Specifications:

MODEL:	IN-1	LAMPING:	MR16 Halogen, 35W Maximum (order separately) 13W LED (order separately)
MATERIAL:	6061-T6 Aluminum		
VOLTAGE:	12V		
WATTAGE:	35 Watt	FINISHES:	BK - Black BZ - Bronze WT - White BG - Beige BKT - Black Texture BZT - Bronze Texture SL - Silver CA - Clear Anodized
SOCKET:	GY-6.35 Bi-pin porcelain socket rated 600V, 250°C 18 ga, Teflon® coated leads.		

Ordering Logic:

MODEL	METAL	POUR COLLAR	FINISH
IN-1	A - Aluminum	0 - None (standard) PC - Pour Collar (optional)	BK - Black BZ - Bronze WT - White BG - Beige BKT - Black Texture BZT - Bronze Texture SL - Silver CA - Clear Anodized

ORDERING EXAMPLE: IN - 1 - A - 0 - BK

Excelsior Lighting, Inc.

PROJECT

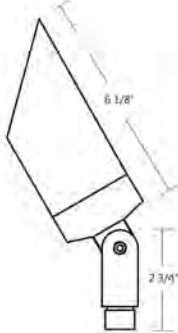
TYPE

2507 N. Bundy Drive Fresno, CA 93727 T - 559.346.1051 F - 559.346.1071 excelsiorlighting.com

FLOOD/ACCENT LIGHT MR16 50W 10W LED MODEL FA-4

Specification-grade landscape lighting, wet-location luminaire for uplighting or downlighting applications. Can be utilized for ground mounted, tree mounted or surface mounted installations.

- Machined 6061-T6 copper-free aluminum. Aluminum components are black anodized, then a polyester powder coat finish is applied. Seven standard TGIC powder coat finishes and clear anodized finish available.
- Remote transformer required.
- Stainless steel hardware.
- 10" 18ga. Teflon coated wire leads.
- 45° angled cap for glare control holds 3 lens accessories.
- Clear tempered borosilicate glass lens, glued in.
- High-temperature silicone O-ring seal used to seal the cap against the body.
- Molded silicone wire pass thru attached to socket wire prevents wicking and water leaking into the lamp compartment.
- CSA listed for wet location landscape use (UL1838).
- Warranty: 10 Years.



Specifications:

MODEL:	FA - 4	LAMPING:	MR16 Halogen, 50W Maximum (order separately) 10W LED (order separately)
MATERIAL:	6061-T6 Aluminum or C36000 Brass		
VOLTAGE:	12V		
WATTAGE:	50 Watt	FINISHES:	BK - Black BZ - Bronze WT - White BG - Beige BKT - Black Texture BZT - Bronze Texture SL - Silver CA - Clear Anodized
SOCKET:	GY-6.35 Bi-pin porcelain socket rated 600V, 250°C 18 ga, Teflon® coated leads.		

Ordering Logic:

MODEL	METAL	FINISH
FA-4	A - Aluminum	BK - Black BZ - Bronze WT - White BG - Beige NT - Natural BKT - Black Texture BZT - Bronze Texture SL - Silver CA - Clear Anodized DB - Dark Brass

ORDERING EXAMPLE: FA - 4 - A - BZT

Excelsior Lighting, Inc.

PROJECT

TYPE

2507 N. Bundy Drive Fresno, CA 93727 T - 559.346.1051 F - 559.346.1071 excelsiorlighting.com

LIGHTING DETAILS

N.T.S.



RITZ CARLTON HOTEL
1 LINCOLN ROAD MIAMI BEACH, FL. 33139
HISTORIC PRESERVATION BOARD SUBMITTAL

MARCH 03, 2016 : FIRST SUBMITTAL / MARCH 17, 2016 : REVISION #1 / MARCH 21ST, 2016 : FINAL SUBMITTAL

E o A , I n c | 1929 Ponce de Leon Blvd., Coral Gables, Florida 33146 | 3 0 5 . 4 4 4 . 0 9 9 0 | State of Florida Architect of Record Malcolm Berg, AIA License No. AR94424



sheet no.

L-3.1

SCALE: AS NOTED