

**Diego Vanderbiest**  
200 SW 80 ST  
MIAMI, FLORIDA 33143  
(305) 528-4001

AL

LEGO J. VANDERBILT  
RLA #6667355

RAUN

DY

DATE \_\_\_\_\_

12/17

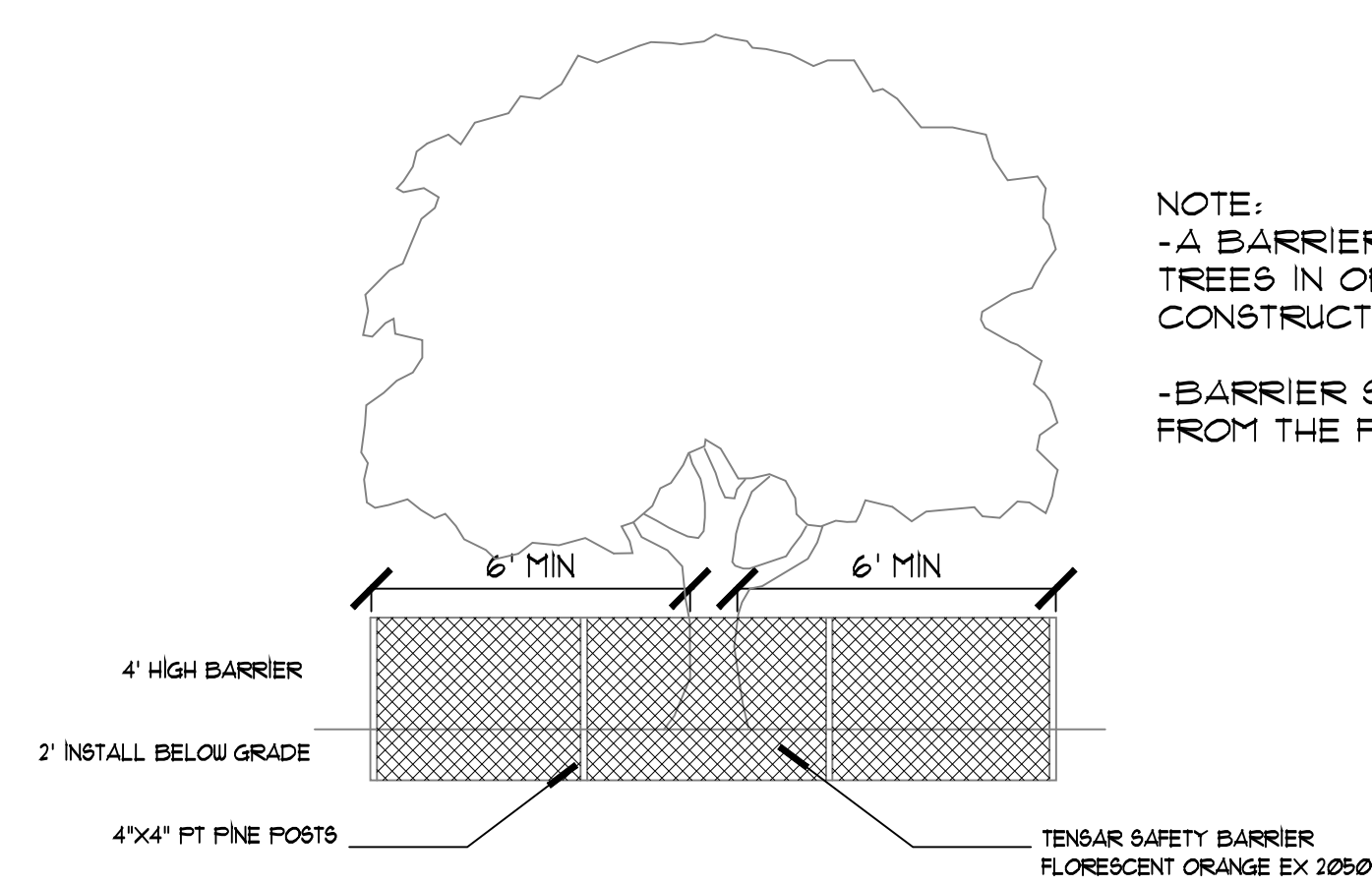
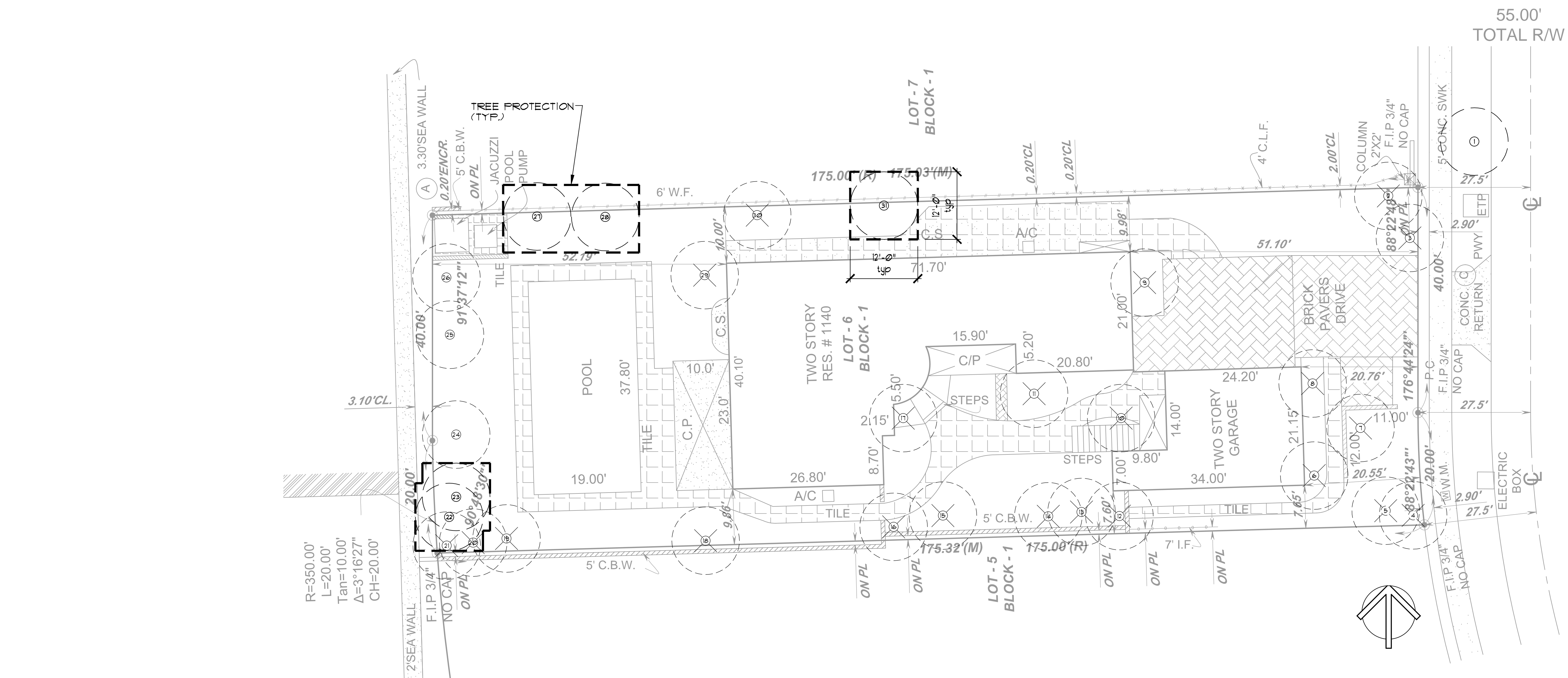
SCALE

" = | $\phi$  -  $\phi$ "

SHEET

$$\begin{array}{|c|} \hline \text{D} \\ \hline \end{array} = \begin{array}{|c|} \hline 1 \\ \hline \end{array}$$

- SHEETS



### TREE BARRIER DETAIL

N.T.S.

Tree Disposition								
No	Botanical Name	Common Name	DBH (in)	Height (ft)	Spread (ft)	Disposition	Condition	Remarks
1	Coccoloba diversifolia	Pigeon Plum	4.5	14	7	Remain	Good	City Tree
2	Dypsis lutescens	Areca Palm	3" multi	16	10	Remove	Good	
3	Dypsis lutescens	Areca Palm	3" multi	16	10	Remove	Good	
4	Dypsis lutescens	Areca Palm	3" multi	16	10	Remove	Good	
5	Livistona chinensis	Chinese Fan Palm	7	16	12	Remove	Good	Invasive
6	Araucaria heterophylla	Norfolk Island Pine	11.5	40	12	Remove	Fair	
7	Schefflera actinophylla	Umbrella Tree	6, 7	18	12	Remove	Fair	
8	Dypsis lutescens	Areca Palm	3" multi	14	10	Remove	Good	
9	Livistona chinensis	Chinese Fan Palm	8	16	12	Relocated	Good	Invasive. Dead wood
10	Ficus benjamina	Ficus	51	40	33	Remove	Fair	
11	Ptychosperme elegans	Alexander Palm	4	30	10	Remain	Good	
12	Sabal palmetto	Sabal Palm	12	20	12	Remain	Good	
13	Bischofia javanica	Bischofia	5.5, 7.5, 10.5, 17	40	21	Remove	Poor	Invasive
14	Melaleuca quinquenervia	Melaleuca	11	22	12	Remove	Fair	
15	Dypsis lutescens	Areca Palm	3" multi	16	10	Remove	Good	
16	Dypsis lutescens	Areca Palm	3" multi	18	12	Remove	Good	
17	Livistona chinensis	Chinese Fan Palm	9	14	10	Remain	Good	Prohibited species
18	Dypsis lutescens	Areca Palm	3" multi	14	10	Remove	Good	
19	Dypsis lutescens	Areca Palm	3" multi	14	10	Remove	Good	
20	Livistona chinensis	Chinese Fan Palm	8	12	10	Remove	Good	
21	Dypsis lutescens	Areca Palm	3" multi	18	12	Remove	Good	Prohibited species
22	Livistona chinensis	Chinese Fan Palm	9.5	16	12	Remain	Good	
23	Ficus benghalensis	Banyan Tree	63	45	30	Remove	Good	
24	Livistona chinensis	Chinese Fan Palm	7.5	18	12	Remain	Good	
25	Ficus benjamina	Ficus	7, 10	26	16	Remove	Fair	Invasive
26	Araucaria heterophylla	Norfolk Island Pine	24.5	60	15	Remove	Good	

## LANDSCAPE PLAN

**NEW RESIDENCE  
40 WEST RIVO ALTO  
MIAMI BEACH, FLORIDA**

**Diego Vanderbiest**  
6200 SW 80 ST  
MIAMI, FLORIDA 33143  
(305) 528-4001

SEAL

DIEGO J. VANDERBIEST  
FLA #6667355

DRAU

Dy

DAT

27/17

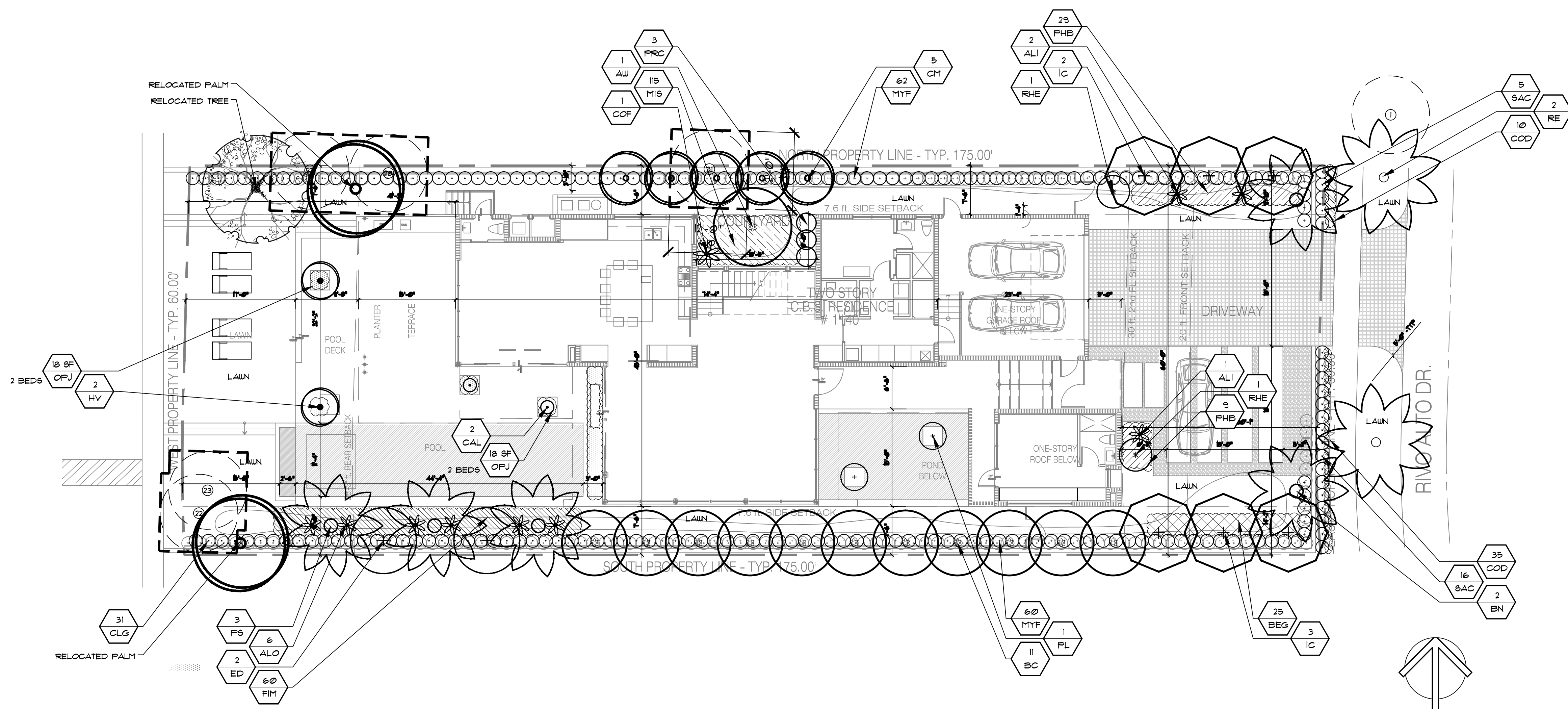
101

---

SHEET

$$\frac{L}{A} = \frac{1}{\rho}$$

OF - SHEET:



Tree Disposition								
No	Botanical Name	Common Name	DBH (in)	Height (ft)	Spread (ft)	Disposition	Condition	Remarks
1	Roystonea elata	Royal Palm	15	40	16	Remain	Good	City Tree
2	Ficus benjamina	Ficus	26	36	24	Remove	Poor	
3	Roystonea elata	Royal Palm	20	50	18	Remove	Good	
4	Roystonea elata	Royal Palm	15	50	20	Remove	Fair	Wind Damage
5	Roystonea elata	Royal Palm	14	50	20	Remove	Fair	Wind Damage
6	Plumeria spp	Frangipani	2	10	4	Remove	Fair	
7	Acacia xiphiophylla	Snakewood	2@6	26	14	Remove	Poor	
8	Ptychosperma elegans	Alexander Palm	3, 3.5	22	10	Remove	Fair	
9	Acacia xiphiophylla	Snakewood	3	15	6	Remove	Poor	
10	Strelitzia nicolai	White Bird of Paradise	10.5	20	10	Remove	Fair	
11	Strelitzia nicolai	White Bird of Paradise	7@8.5	20	18	Remove	Fair	
12	Ficus benjamina	Ficus	15	30	15	Remove	Fair	
13	Delonix regia	Royal Poinciana	6	40	10	Remove	Poor	
14	Veitchia montgomeryana	Montgomery Palm	3.5	15	7	Remove	Good	
15	Bucida buceras	Black Olive	24	40	30	Remove	Fair	
16	Ficus benjamina	Ficus	9, 16	30	20	Remove	Fair	
17	Strelitzia nicolai	White Bird of Paradise	12	23	8	Remove	Good	
18	Ficus benjamina	Ficus	11, 16	30	21	Remove	Poor	No structure
19	Terminalia catappa	Tropical Almond	10.5	26	18	Remove	Fair	
20	Taxodium distichum	Bald cypress	9.5	24	20	Remove	Poor	Split Trunk, damaged canopy, leaning trunk
21	Taxodium distichum	Bald cypress	6.5	10	15	Remove	Fair	
22	Cocos nucifera	Coconut Palm	7	15	15	Remove	Good	
23	Cocos nucifera	Coconut Palm	7	15	15	Remove	Good	
24	Cocos nucifera	Coconut Palm	9	35	15	Relocate	Good	
25	Bursera simaruba	Gumbo Limbo	11.5, 13	15	15	Relocate	Fair	
26	Cocos nucifera	Coconut Palm	6	10	15	Relocate	Good	
27	Sabal palmetto	Sabal Palm	13	22	10	Remain	Good	
28	Cocos nucifera	Coconut Palm	7.5	20	15	Remain	Good	
29	Unknown	Unknown	9	17	14	Remove	Good	
30	Schefflera actinophylla	Umbrella Tree	2, 4, 5.5	30	15	Remove	Fair	Invasive
31	Roystonea elata	Royal Palm	25	50	20	Remain	Good	

## REQUIREMENTS

Zoning District: RS-3                      Net Lot Area 0.24 Acres                      10,500 s.f.

**OPEN SPACE**

A. Square Feet of open space as required by Chapter 33, as indicated on site plan:	6,258	6,258
--	-------	-------

B. Square Feet of parking lot open space required by Chapter 18A, as indicated on site plan:	n/a	n/a
No. parking spaces 0 x 10 s.f. per parking space =		

C. Total s.f. of landscaped open space required by Chapter 33: A + B =	6,258	6,258
--	-------	-------

### LAWN AREA CALCULATION

A.	11,250	total s.f. of landscaped open space required by Chapter 33	6,258	6,258
----	--------	--	-------	-------

B. Maximum lawn area (sod) permitted = 50 % x 11,250 s.f. = 5,625 2,111

**TREES:**

A. No. trees required per net lot acre = 3	3	7
--	---	---

B. % Palms Allowed: No. trees provided x 30% = 1 1

C. % Natives Required: No. trees provided x 30 % = 1 7

D. Street trees (max. average spacing of 35' o.c.): 60 l.f. along street / 35 = 2 2

E. Street trees located directly beneath power lines (max. avg. spacing of 25' o.c.): 0 linear feet along street / 25 =	n/a	n/a
---	-----	-----

**SHRUBS:**

A. No. trees required $(A + D) \times 10 =$ no. of shrubs required	30	508
--	----	-----

B. No. Shrubs required x 30% = no. of native shrubs required.	10	122
---	----	-----

## PLANTI IST

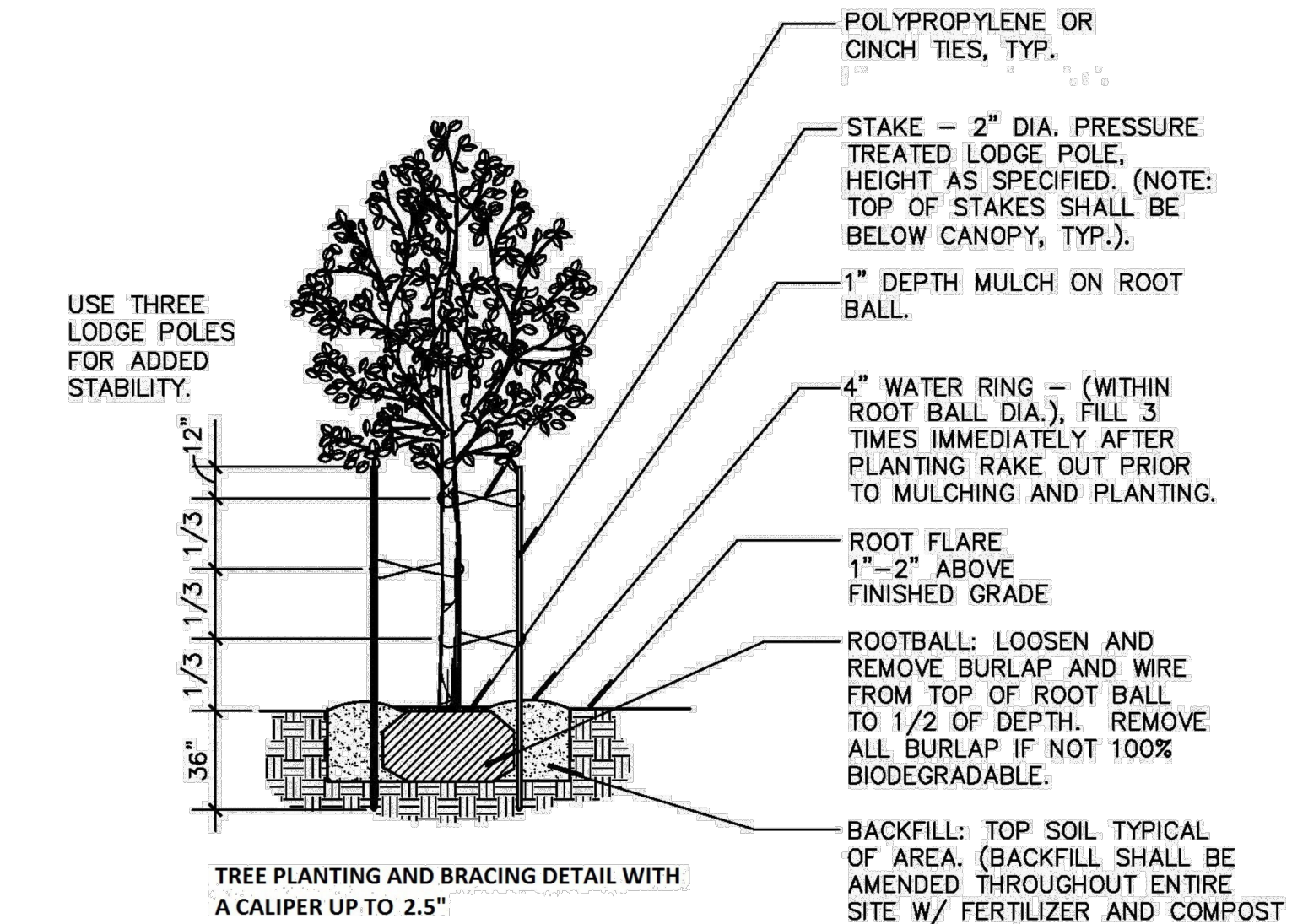
## TREES & PALMS

QTY	KEY	BOTANICAL NAME	COMMON NAME	DESCRIPTION
1	AW*	<i>Acetorhiza wrightii</i>	Paurotis Palm	12'-14' o/h, 7' cane min
1	BC	<i>Bambusa chungi</i>	Tropical Blue Bamboo	12'-16" h, thick
1	BN	<i>Banksia nobilis</i> , 'silver select'	Silver Banksia Palm	18' o/h, th, trunk, matching tips
1	CM	<i>Corytha mixta</i>	Fishtail Palm	12'-16" h, th
1	ED	<i>Elaeocarpus decipiens</i>	Japanese Honey	14' h, 4.5" c
2	HY	<i>Hydrocotyle verticillata</i>	Spindle Palm	12' o/h, th
5	IC	<i>Ischaemum chinensis</i>	Dahoon Holly	14' h, 4.5" c
2	PS	<i>Phoenix sylvestris</i>	Wild Date Palm	8' c
1	PL	<i>Polystichum longifolium</i>	Mossy Tree	10' o/h, th, full to base
2	PE	<i>Podocarpus neriifolia</i>	Royal Palm	16' o/h, th
2	RS	<i>Rosemary elata</i>	Rosemary	8' c

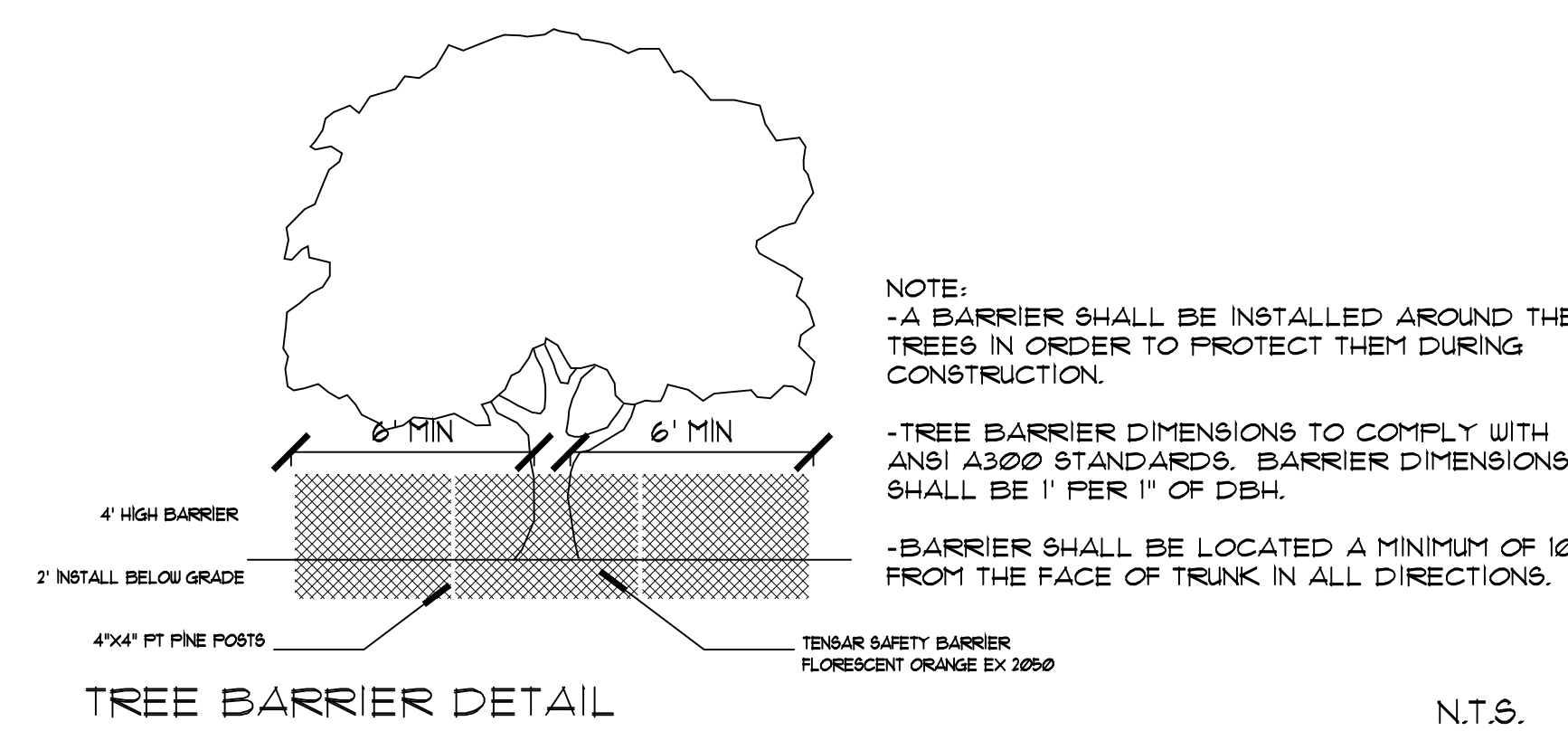
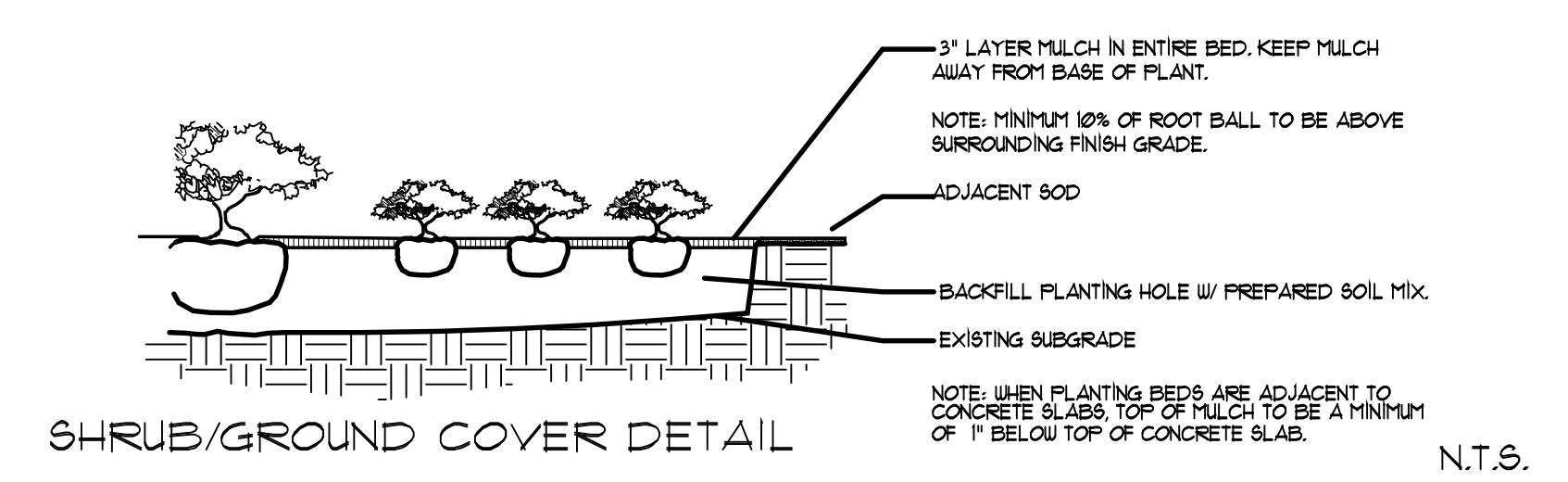
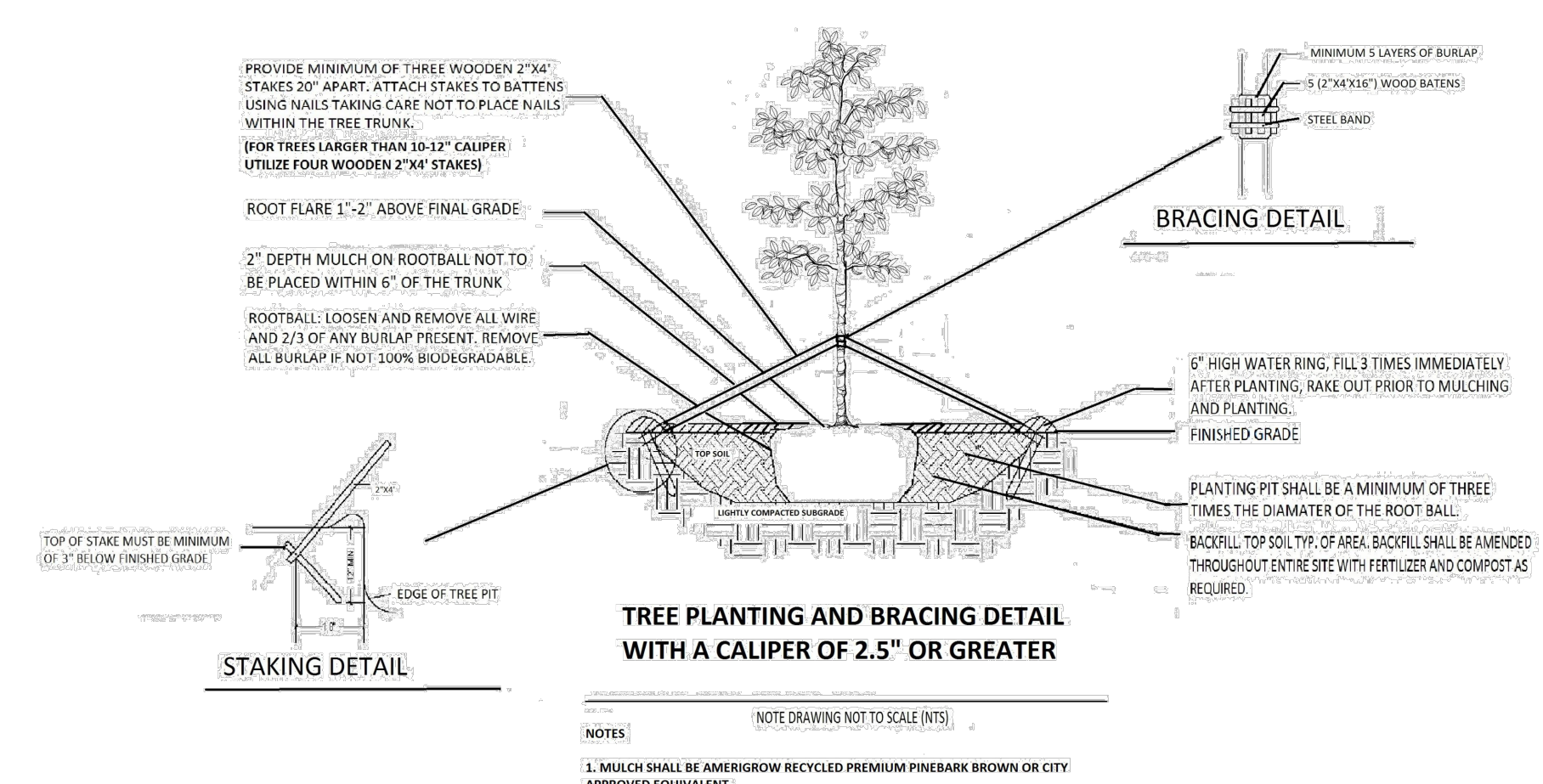
## SHRUBS &amp; GROUNDCOVERS

QTY	KEY	BOTANICAL NAME	COMMON NAME	DESCRIPTION
3	ALI	Alcantarea imperialis	Imperial Bromeliad	17" pot
6	ALO	Alcantarea odorata	Odorata Bromeliad	17" pot
25	BEG	Begonia odorata 'alba'	White Begonia	3 gal
2	CAL	Calceolac 'black'	Black Calceolac	7 gal
31	CLG	Clusia guittiera	Clusia	3 gal 24" ht
1	COF	Cordyline frutesca 'black magic'	Black Magic	7 gal
45	COD	Cotoneaster dammeri	Cotoneaster	1 gal
60	FIM	Ficus microcarpa	Green Island Ficus	3 gal
115	MIS	Microsorum scolopendrium	Wart Fern	1 gal
122	MYF*	Myrsine fortunei	Simmons Stopper	3 gal 24" ht
6	OPJ	Ophiopogon japonicus	Mondo Grass	sq ft
38	PHB	Philodendron 'burle marx'	Burle Marx	3 gal
3	PRC	Philodendron 'yojo congo'	Rojo Congo	7 gal
21	SAC	Sanseveria cylindrica	Cylinder Snake Plant	7 gal
2100	LAVIN	Zoyzia japonica	Zoyzia	sq ft

\* Denotes Native Species



- NOTES
- MULCH SHALL BE AMERIGROW RECYCLED PREMIUM PINEBARK BROWN OR CITY APPROVED EQUIVALENT.
  - DO NOT APPLY MULCH WITHIN 6" OF THE TREE TRUNK



ROOT PRUNING SPECIFICATIONS

ALL TREES AND PALMS TO BE RELOCATED MUST BE WATERED DAILY FOR AT LEAST 2-3 DAYS PRIOR TO ANY ROOTS BEING CUT TO ENSURE THAT THEY ARE FULLY HYDRATED. EACH WATERING MUST THOROUGHLY SATURATE THE ROOTBALL TO ITS FULL DEPTH.

EACH TREE AND PALM MUST THEN BE WATERED EVERY OTHER DAY, NOT RELYING ON RAIN, DURING THE ENTIRE ROOT PRUNING PROCESS EITHER BY A TEMPORARY IRRIGATION SYSTEM OR BY HAND. EACH WATERING MUST THOROUGHLY SATURATE THE ROOTBALL TO ITS FULL DEPTH.

TREE AND PALM RELOCATION ACTIVITIES MUST BE SCHEDULED SO THAT REMOVAL AND REPLANTING TAKE PLACE IN THE SAME 24 HOUR PERIOD.

ALL DIGGING IN THE ROOT ZONE DURING THE ROOT PRUNE PROCESS MUST BE DONE BY HAND. PRUNING OF ROOTS MUST BE DONE BY HAND WITH CLEAN, SHARP TOOLS. MACHINERY COULD BE USED ON LARGER TREES AS LONG AS ROOTS ARE FINALIZED BY HAND PRUNING. DO NOT PAINT ROOTS WITH PAINT OR ANY KIND OF SEALANT.

MYCORRHIZA (ROOTS TRANSPLANT OR EQUIVALENT) MUST BE INCORPORATED INTO THE BACKFILL SOIL PRIOR TO BACKFILLING AS PER MANUFACTURERS RECOMMENDATIONS.

AFTER EACH ROOT PRUNE, EACH SECTION OF ROOTBALL THAT IS PRUNED MUST BE WRAPPED WITH A BLACK PLASTIC AND THE TRENCH BACKFILLED WITH ORIGINAL EXCAVATED SOIL. A TREE RING WITH A MINIMUM HEIGHT OF 6\"/>

ONCE THE TREE RING IS CONSTRUCTED AFTER EACH ROOT PRUNE, A HIGH-PHOSPHORUS ROOT STIMULANT MUST BE LIBERALLY APPLIED TO THE SURFACE OF THE ROOTBALL AND THOROUGHLY WATERED IN TO ENCOURAGE NEW ROOT GROWTH.

PRIOR TO ANY ROOTS BEING CUT, ALL MAJOR ROOTS MUST BE IDENTIFIED TO DETERMINE THE ROOTBALL DIAMETER BASED ON THE RELATIVE LOCATION AND SIZE OF THE ROOTS.

MINIMUM ROOTBALL DIAMETER CALCULATION BASED ON A FACTOR OF 10 OR ALLOWING A MINIMUM OF 9\"/>

MINIMUM ROOTBALL DEPTH MUST BE 24\"/>

AS A GENERAL RULE, MINIMUM ROOT PRUNE TIME FOR TREES WITH A DBH OF LESS THAN 10\"/>

AS A GENERAL RULE, MINIMUM ROOT PRUNE TIME FOR TREES WITH A DBH OF 10\"/>

MAINTENANCE SPECIFICATIONS

ALL NEW AND RELOCATED TREES AND PALMS MUST BE MAINTAINED FOR ONE YEAR FROM THE DATE OF RELOCATION TO THEIR FINAL LOCATIONS.

WHENEVER POSSIBLE, EACH TREE AND PALM MUST BE WATERED BY A PERMANENT AUTOMATIC IRRIGATION SYSTEM FOLLOWING RELOCATION. EACH WATERING MUST THOROUGHLY SATURATE THE ROOTBALL TO ITS FULL DEPTH. THIS WILL REQUIRE 25-50 GALLONS OF WATER FOR SMALL TREES AND PALMS, DEPENDING ON ROOTBALL SIZE. WHILE LARGE TREES WILL REQUIRE A MINIMUM OF 100 GALLONS PER FOOT OF ROOTBALL DIAMETER, WATERING FREQUENCY MUST BE EVERYDAY FOR THE FIRST TWO WEEKS, EVERY OTHER DAY FOR THE NEXT TREE WEEKS, AND EVERY THIRD DAY FOR THE NEXT 6-8 WEEKS.

WHEN AN AUTOMATIC IRRIGATION SYSTEM IS NOT POSSIBLE, CONTRACTOR IS RESPONSIBLE FOR HAND WATERING RELOCATED TREES AND PALMS THOROUGHLY THE MAINTENANCE PERIOD AND UNTIL FINAL ACCEPTANCE BY THE LANDSCAPE ARCHITECT AND/OR CLIENT.

IMMEDIATELY AFTER RELOCATION TO THE FINAL LOCATION, A HIGH-PHOSPHORUS ROOT STIMULANT MUST BE APPLIED TO THE SURFACE OF THE ROOTBALL. AT THE RECOMMENDED LABEL RATE AND WATERED IN WITH A DRENCH CONSISTING OF A SYSTEMIC INSECTICIDE AND A CONTACT ROOT ROT FUNGICIDE, FOLLOWING LABEL INSTRUCTIONS, AS INITIAL PREVENTATIVE MAINTENANCE.

EVERY THREE MONTHS THEREAFTER, A HIGH-PHOSPHORUS ROOT STIMULANT MUST BE APPLIED TO THE SURFACE OF THE ROOTBALL AT THE RECOMMENDED LABEL RATE AND WATERED IN WITH A DRENCH CONSISTING OF A SYSTEMIC INSECTICIDE AND A BROAD-SPECTRUM SYSTEMIC FUNGICIDE, FOLLOWING LABEL INSTRUCTIONS, AS CONTINUING PREVENTATIVE MAINTENANCE.

IRRIGATION AND BRACING MUST BE CHECKED AND EACH TREE OR PALM THOROUGHLY INSPECTED FOR SIGNS OF STRESS, DISEASE, OR PEST PROBLEMS ON A MONTHLY BASIS.

SHADE TREES

IMMEDIATELY AFTER RELOCATION TO THE FINAL LOCATION AND EVERY THREE MONTHS THEREAFTER, A HIGH-QUALITY, SLOW-RELEASE 15-2-15 GRANULAR FERTILIZER MUST BE APPLIED, AT THE RECOMMENDED LABEL RATE, SPREAD EVENLY ACROSS THE SURFACE OF THE ROOTBALL.

FOLIAR FEED FOUR TIMES PER YEAR.

FLOWERING TREES

IMMEDIATELY AFTER RELOCATION TO THE FINAL LOCATION AND EVERY THREE MONTHS THEREAFTER, A HIGH-QUALITY, SLOW-RELEASE 15-2-15 GRANULAR FERTILIZER MUST BE APPLIED, AT THE RECOMMENDED LABEL RATE, SPREAD EVENLY ACROSS THE SURFACE OF THE ROOTBALL.

FOLIAR FEED FOUR TIMES PER YEAR.

PALMS

STING MUST BE REMOVED FROM THE TIED UP LEAVES IMMEDIATELY AFTER RELOCATION TO THE FINAL LOCATION IF THE PALM WAS ROOT PRUNED OR WITHIN 30-45 DAYS AFTER RELOCATION ON THE OCCASION THE LANDSCAPE ARCHITECT APPROVED RELOCATION WITHOUT ROOT PRUNING DUE TO TIME CONSTRAINTS.

IMMEDIATELY AFTER RELOCATION TO THE FINAL LOCATION AND EVERY THREE MONTHS THEREAFTER, A HIGH-QUALITY, SLOW-RELEASE 8-14-12 GRANULAR FERTILIZER MUST BE APPLIED, AT THE RECOMMENDED LABEL RATE, SPREAD EVENLY ACROSS THE SURFACE OF THE ROOTBALL.

FOLIAR FEED SIX TIMES PER YEAR.

PLANT NOTES

1. ALL PLANT MATERIAL TO BE FLORIDA NO. 1 OR BETTER FLORIDA DEPARTMENT OF AGRICULTURE GRADES AND STANDARDS PARTS I AND II, 2ND EDITION, FEBRUARY 1998, RESPECTIVELY.

2. ALL PLANTING BEDS TO BE TOPPED WITH 3\"/>

3. ALL TREES TO BE STAKED IN A GOOD WORKMANLIKE MANNER. NO NAIL STAKING IN TRUNKS PERMITTED.

4. LANDSCAPE PLAN SHALL BE INSTALLED IN COMPLIANCE WITH ALL LOCAL CODES.

5. ALL SOD SHALL BE ST. AUGUSTINE 'FLORATAM' SOLID SOD, (UNLESS OTHERWISE NOTED) AND LAID WITH ALTERNATING AND ABUTTING JOINTS.

6. ALL PLANTING BEDS TO BE WEED AND GRASS FREE.

7. LANDSCAPE CONTRACTOR SHALL REVIEW ALL DRAWINGS AND PREPARE ONE'S OWN QUANTITY COUNTS PRIOR TO BID COST AND COMPARE TO ARCHITECT'S PLANT LIST. LANDSCAPE CONTRACTOR IS RESPONSIBLE FOR ATTAINING ACCURATE COUNT OF PLANT MATERIALS SPECIFIED. IN THE EVENT OF DISCREPANCIES, LANDSCAPE CONTRACTORS SHALL BRING TO THE ATTENTION OF LANDSCAPE ARCHITECT. PLAN SHALL TAKE PRECEDENCE OVER PLANT LIST.

8. LANDSCAPE CONTRACTOR SHALL LOCATE AND VERIFY ALL UNDERGROUND UTILITIES PRIOR TO DIGGING.

9. NO CHANGES SHALL BE MADE WITHOUT THE PRIOR CONSENT OF THE LANDSCAPE ARCHITECT.

10. ALL PLANTED AREAS TO RECEIVE 100% COVERAGE BY AN AUTOMATIC IRRIGATION SYSTEM, WITH A MINIMUM OF 50% OVERLAP. RAIN SENSOR TO BE PROVIDED.

- NOTE:
- REFER TO ARCHITECTURAL PLANS FOR PROPOSED UTILITIES. SHOULD LANDSCAPE INTERFERE WITH PROPOSED UTILITIES CONTACT THE LANDSCAPE ARCHITECT TO FIELD ADJUST PROPOSED LANDSCAPE.
  - SHOULD PROPOSED UTILITIES INTERFERE WITH EXISTING ROOTS, CONTACT THE LANDSCAPE ARCHITECT. UTILITIES NEED TO BE READJUSTED IN ORDER TO AVOID ANY EXISTING ROOTS.
  - THE LANDSCAPE CONTRACTOR SHALL GUARANTEE ALL NEW TREES AND PALMS FOR A PERIOD OF 1-YEAR FROM THE DATE OF INITIAL ACCEPTANCE.
  - ALL GUYING AND STAKING SHALL BE REMOVED FROM ALL TREES AND PALMS WITHIN TWELVE MONTHS AFTER PLANTING. EXCEPTIONS REQUIRE WRITTEN AUTHORIZATION FROM THE CITY URBAN FORESTRY.
  - A FINAL ONSITE INSPECTION SHALL BE REQUIRED WITH URBAN FORESTRY STAFF PRIOR TO ANY OFFICIAL ACCEPTANCE OF ROW PLANT MATERIAL. IN ORDER TO VERIFY PROPER PLANTING DEPTH, BRACING AND QUALITY OF MATERIAL. FAILURE TO CONDUCT THE INSPECTION COULD RESULT IN REJECTION OF THE PLANT MATERIAL.

REVISIONS

LANDSCAPE DETAILS

NEW RESIDENCE  
40 WEST RIVO ALTO  
MIAMI BEACH, FLORIDA

**Diego Vanderbiest**  
6100 SW 80 ST  
MIAMI, FLORIDA 33143  
(305) 528-4001

SEAL

DIEGO J. VANDERBIEST  
RLA 16661359

DRAWN

DV

DATE

11/12/17

SCALE

N.T.S.

SHEET

LA-2

OF - SHEETS