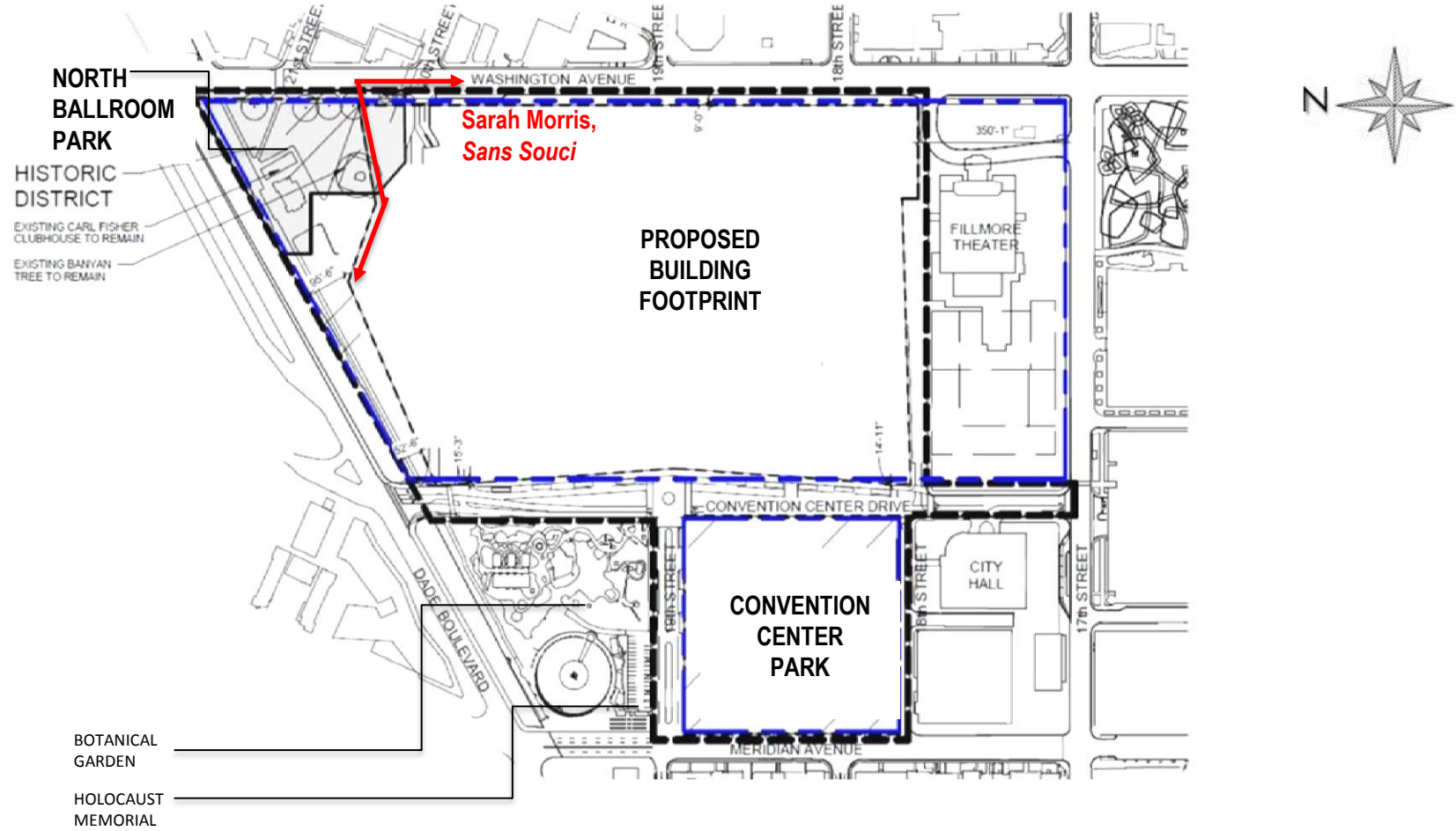


An architectural rendering of the City of Miami Beach Convention Center. The building features a prominent, undulating white facade composed of numerous vertical, rib-like elements. In the foreground, a wide, paved sidewalk with a reddish-pink hue runs alongside a road. Several people are depicted walking on the sidewalk, including a man in a white t-shirt and blue jeans, a woman in a black jacket and blue jeans, and another woman in a pink and white patterned shirt. A red car is visible on the road. The scene is set against a blue sky with scattered white clouds, and several palm trees are scattered throughout the landscape.

City of Miami Beach Convention Center
Art in Public Places Recommendations
Historic Preservation Board Presentation
May 10, 2016

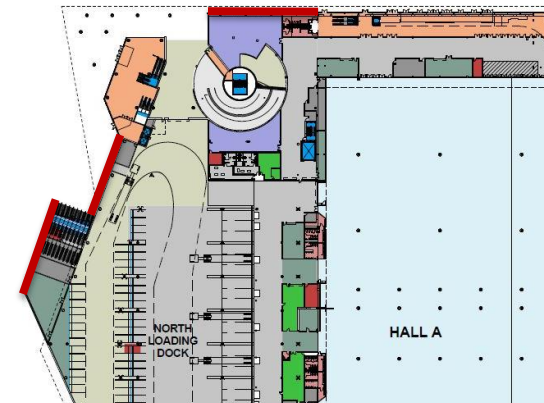
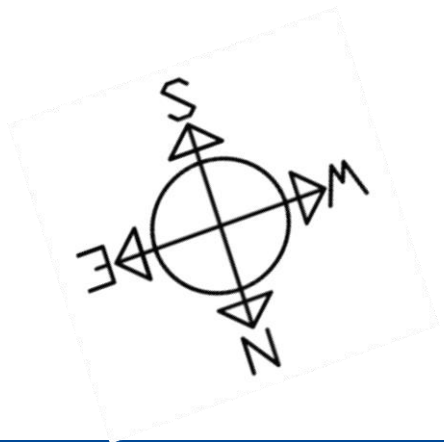
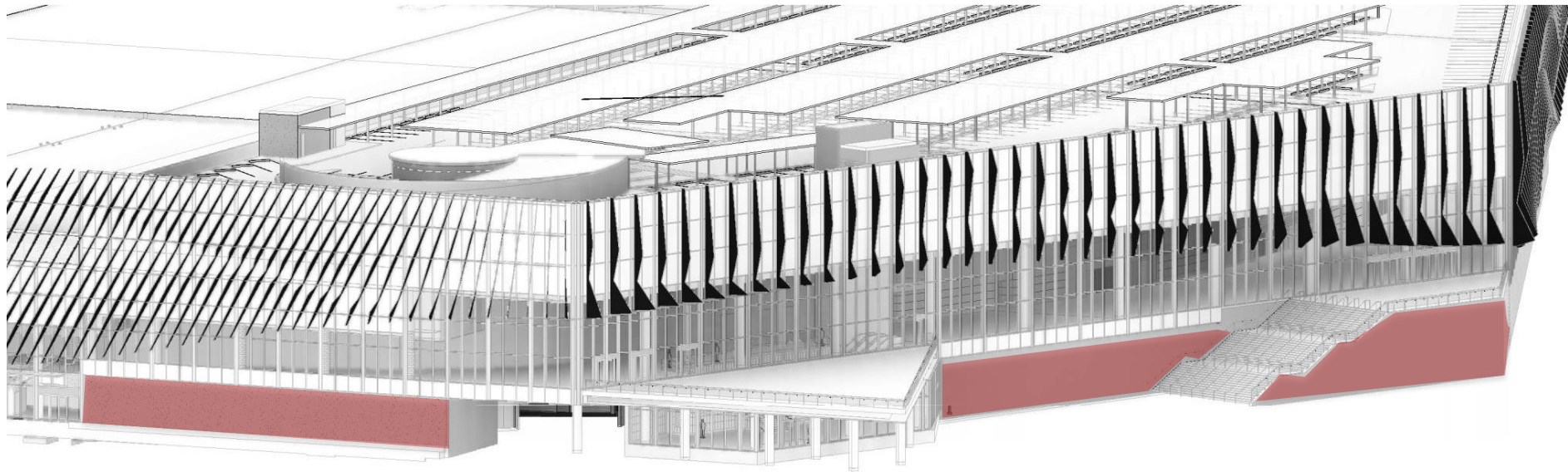
SITE PLAN



NORTHEAST EXTERIOR WALLS

SARAH MORRIS, *SANS SOUCI*

PAINTED PORCELAIN TILE ON WALL



SARAH MORRIS

Sarah Morris was born in 1967 in the UK. She studied at Brown University (1985–89) and Jesus College, Cambridge University (1987–88) before completing the Whitney Museum of American Art Independent Study Program (1989–90). She received the American Academy Berlin Prize Fellow (1999-2000) and Joan Mitchell Painting Award (2001-02). Morris has had numerous international solo exhibitions including Museum of Modern Art, Oxford (1999); Kunsthalle Zürich (2000); Hamburger Bahnhof – Museum für Gegenwart, Berlin (2001); Moderna Museet, Stockholm (2005); Palais de Tokyo, Paris (2005); Museum Boijmans van Beuningen, Rotterdam (2006); Fondation Beyeler, Riehen/Basel (2008); Lenbachhaus, Munich (2008); Museo d'Arte Moderna di Bologna (2009); Museum für Moderne Kunst, Frankfurt am Main (2009); Wexner Centre for the Arts, Columbus, Ohio (2012); Musée National Fernand Léger, Biot (2012); Kunsthalle Bremen, Bremen (2013); M Museum, Leuven (2015). www.sarah-morris.info



Artist Statement *Sans Souci*, 2015

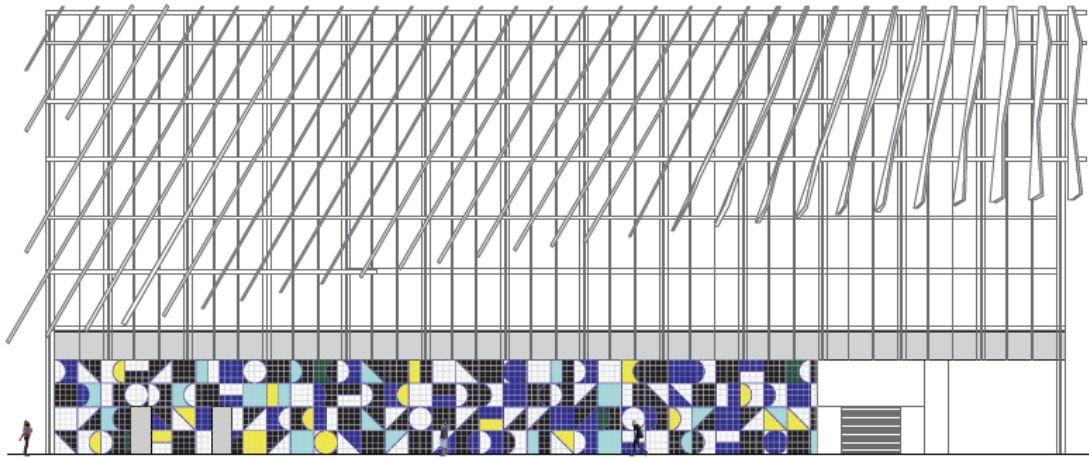
Sans Souci, is a vibrant site-specific artwork by Sarah Morris, providing an evolving spectrum of color and geometry that invites the viewer to reflect upon the concepts of motion, scale, light and social space through the use of organic and geometric forms. The artwork, with over 5,000 sq. ft. of exterior wall space, will be custom fabricated porcelain tile on wall.

Located on the Northeast exterior walls of the Miami Beach Convention Center, *Sans Souci* connects the passer-by, whether they are on foot or in a car, with the architecture of the building and the city at large.

The forms in the wall painting create a tempo, a joining of time and space, crystalized into color. Morris's longstanding practice employs the psychological and visceral properties of color in her paintings, and a fictional cinematic space produced by documenting reality in her films. Throughout her practice, Morris has focused upon the idea of mapping the city and the fragmentary path of the individual with virtual diagrams of architecture and movement.

Miami and most importantly the City of Miami Beach have long been the subjects of focused interest for Morris. She made her third film titled "Miami" in 2002, which was prominently exhibited at City of North Miami MoCA that same year. Her simultaneous series of paintings focused on Miami's past and present. Florida's history in relation to tourism, leisure, architecture, industry, the American dream and politics are rich subjects for Morris's interest. *Sans Souci* references Morris Lapidus' s first architectural work in 1949 outside of his interior designs.





East Wall

South Miami
 "Sara Brax" 2013
 Hand Painted Porcelain Tile on Wall
 East Wall: 18' x 120'
 North Wall: 1' 11" x 150'
 North Wall: 2' 28" x 150'

Permanent site specific installation
 Northeast Exterior Walls (Site 2)
 Miami Beach Convention Center
 City of Miami Beach, Florida

© Sara Brax



North Wall 1

North Wall 2

NCS Color Palette Codes

1000-N	1355-R90B
5300-N	5145-050Y
6500-R10G	0360-050Y
4165-R73B	7025-G

Dimensions:

East Wall 16' x 129'

North Wall (1) 17' x 122'

North Wall (2) 22' x 105'

“Sans Souci”

	0500-N		1555-R80B
	9000-N		0540-G80Y
	0530-B10G		0560-G80Y
	4055-R70B		7020-G



Sarah Morris: Reference Images

Images (left to right): Two Film Stills from Sarah Morris's 'Miami', 2002; Morris Lapidus Shade Pavillion; Four Film Stills from Sarah Morris's 'Miami', 2002; Fontainebleau Hotel; Film Still from Sarah Morris's 'Miami', 2002



Sarah Morris
"Robert Towne"
2006
Household gloss paint on wall
120 ft x 200 ft
Site-specific installation
Collection of Aby Rosen, Lever House, New York



Sarah Morris
Big Ben, 2012, London Underground, Gloucester Road Station, London