

ELEVATIONS

THE SHORE CLUB

1901 COLLINS AVE - MIAMI, FL

ADD Inc ARCHITECTURE + DESIGN

Lic# AA26001507
Jonathan Cardello
Lic# AR93391

One Biscayne Tower Suite 1670
Two South Biscayne Blvd, Miami, FL 33131
T: 305.482.8700
www.addinc.com

HPB
04-14-2015

REV.
04-20-2015
06-05-2015
10-19-2015

03-17-2016

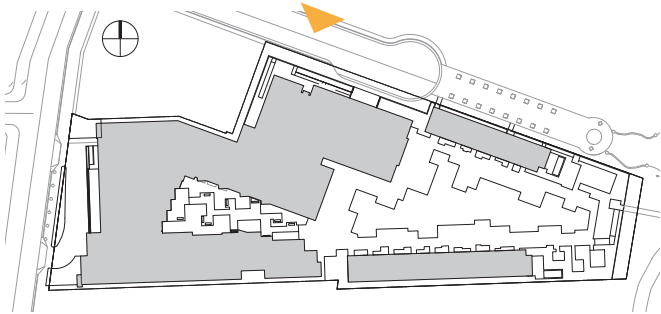
E-1

Proposed Overall East Elevation

SCALE: 1/16" = 1'-0"

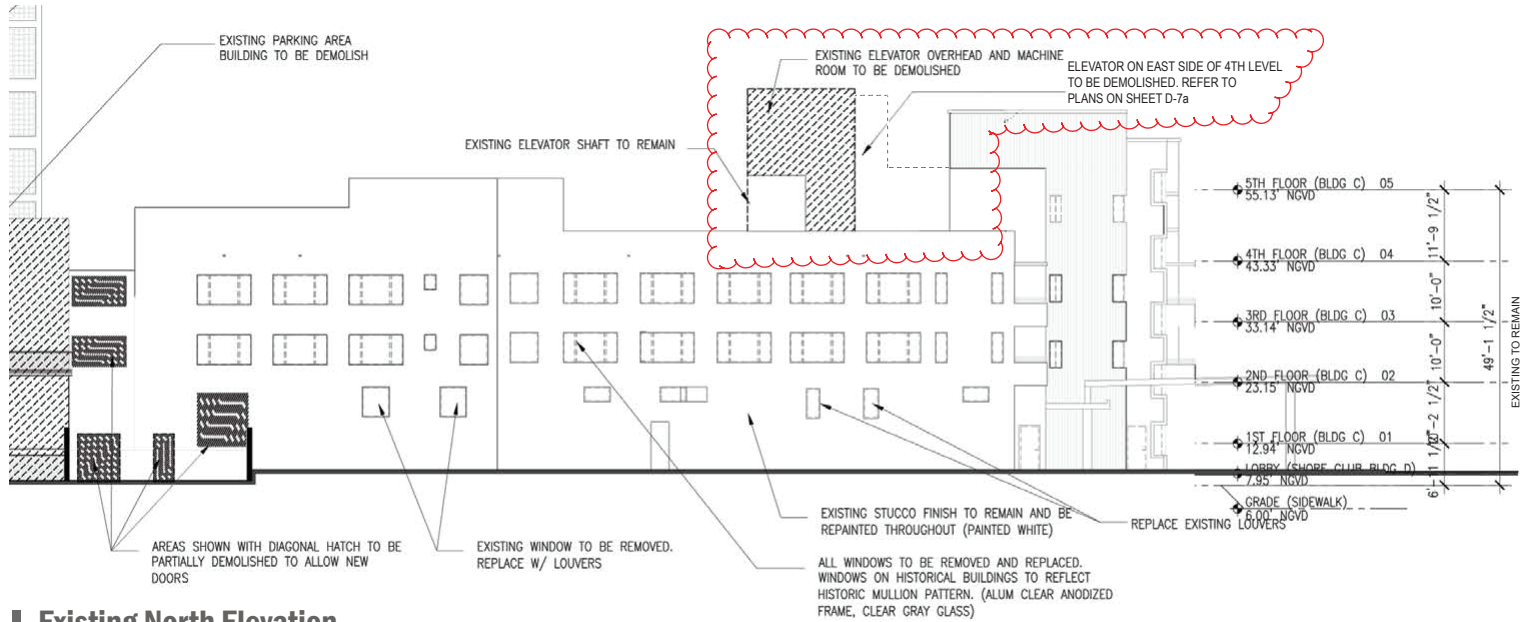
0' 16' 32'

PROJECT #: 14028.00



ELEVATIONS

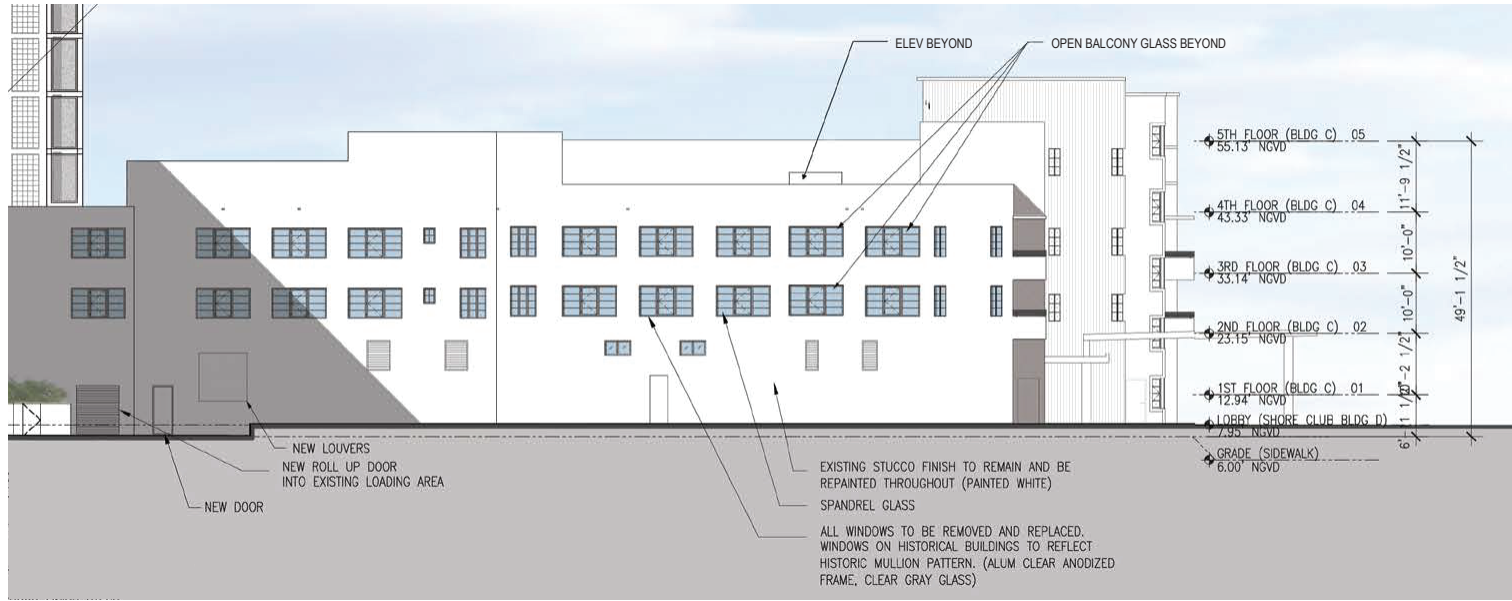
THE SHORE CLUB
1901 COLLINS AVE - MIAMI, FL



Existing North Elevation

SCALE: 1/16" = 1'-0"

WALLS AT REAR SECTION OF 4TH LEVEL TO BE DEMOLISHED AND REBUILT. REFER TO PLANS ON SHEET D-11

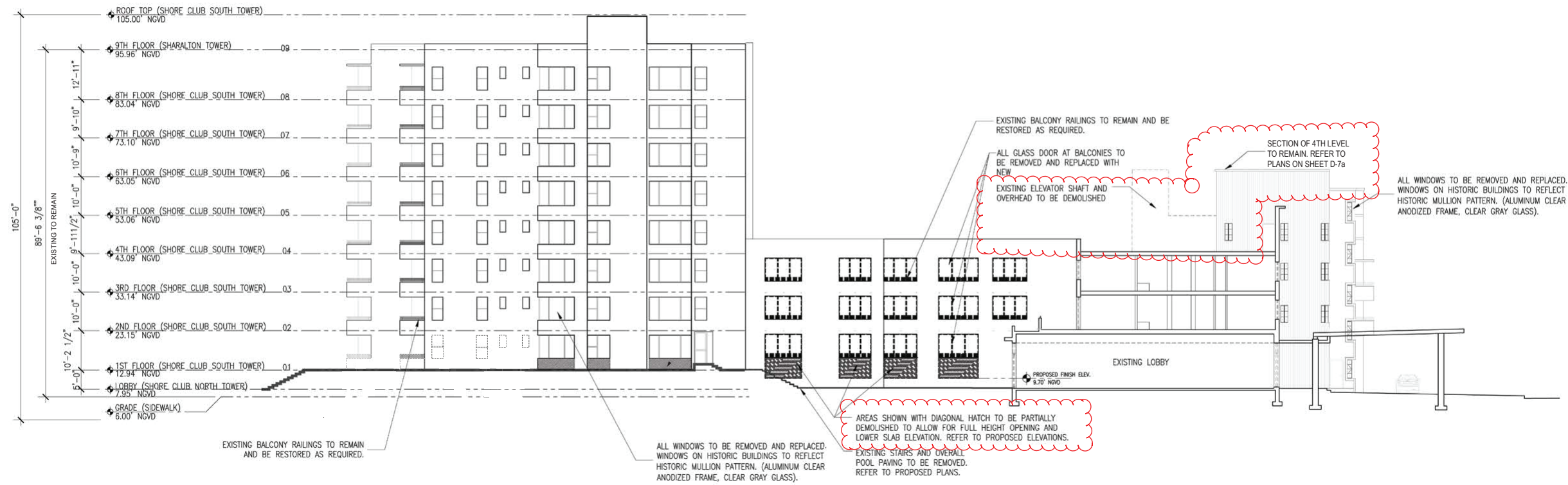
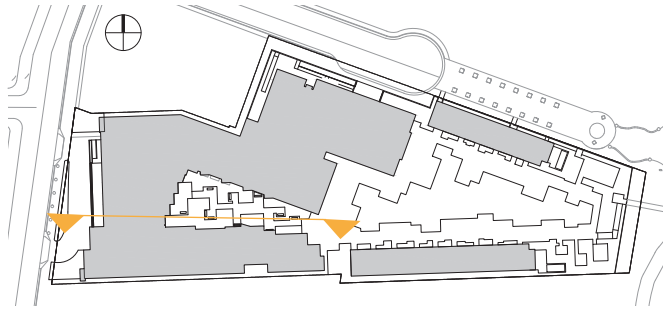


Revised Proposed North Elevation

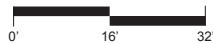
SCALE: 1/16" = 1'-0"



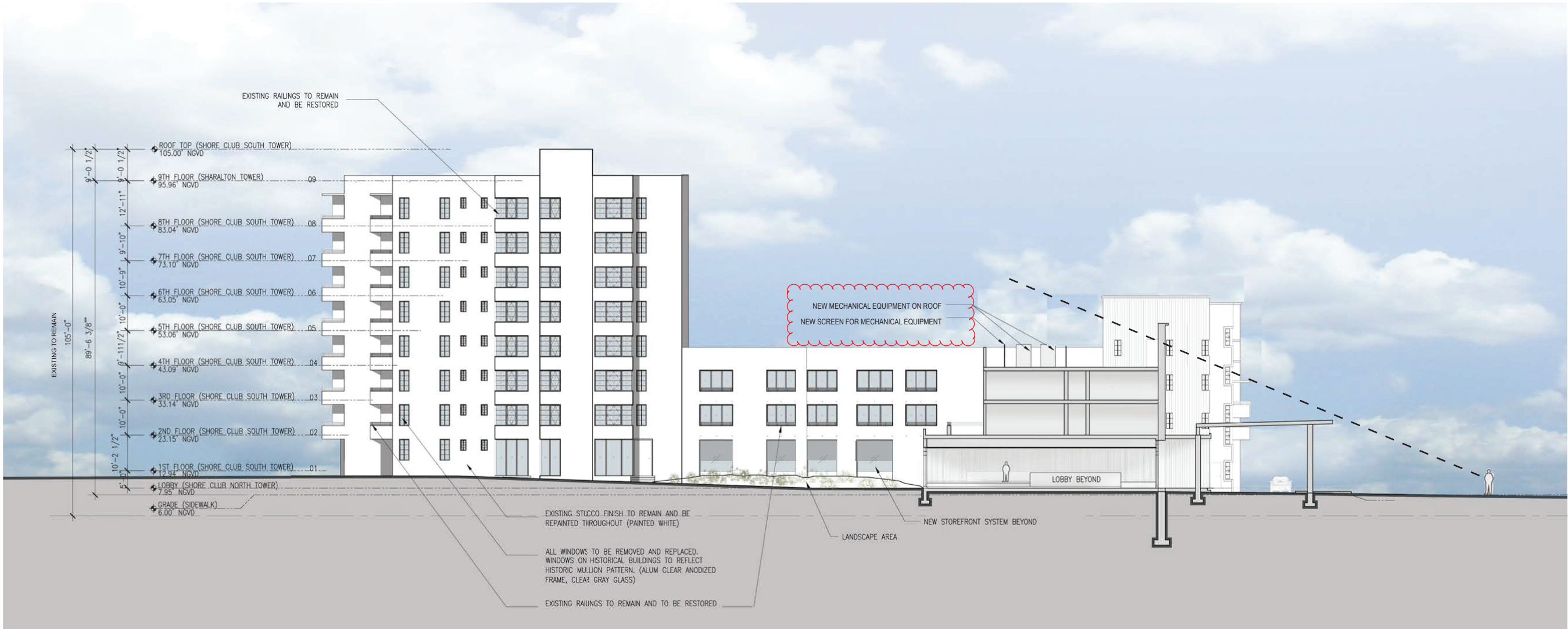
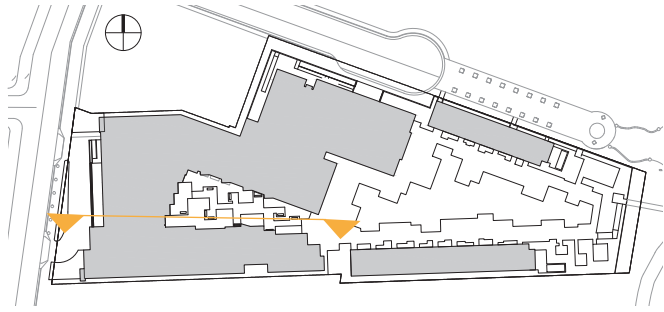
PROJECT #: 14028.00



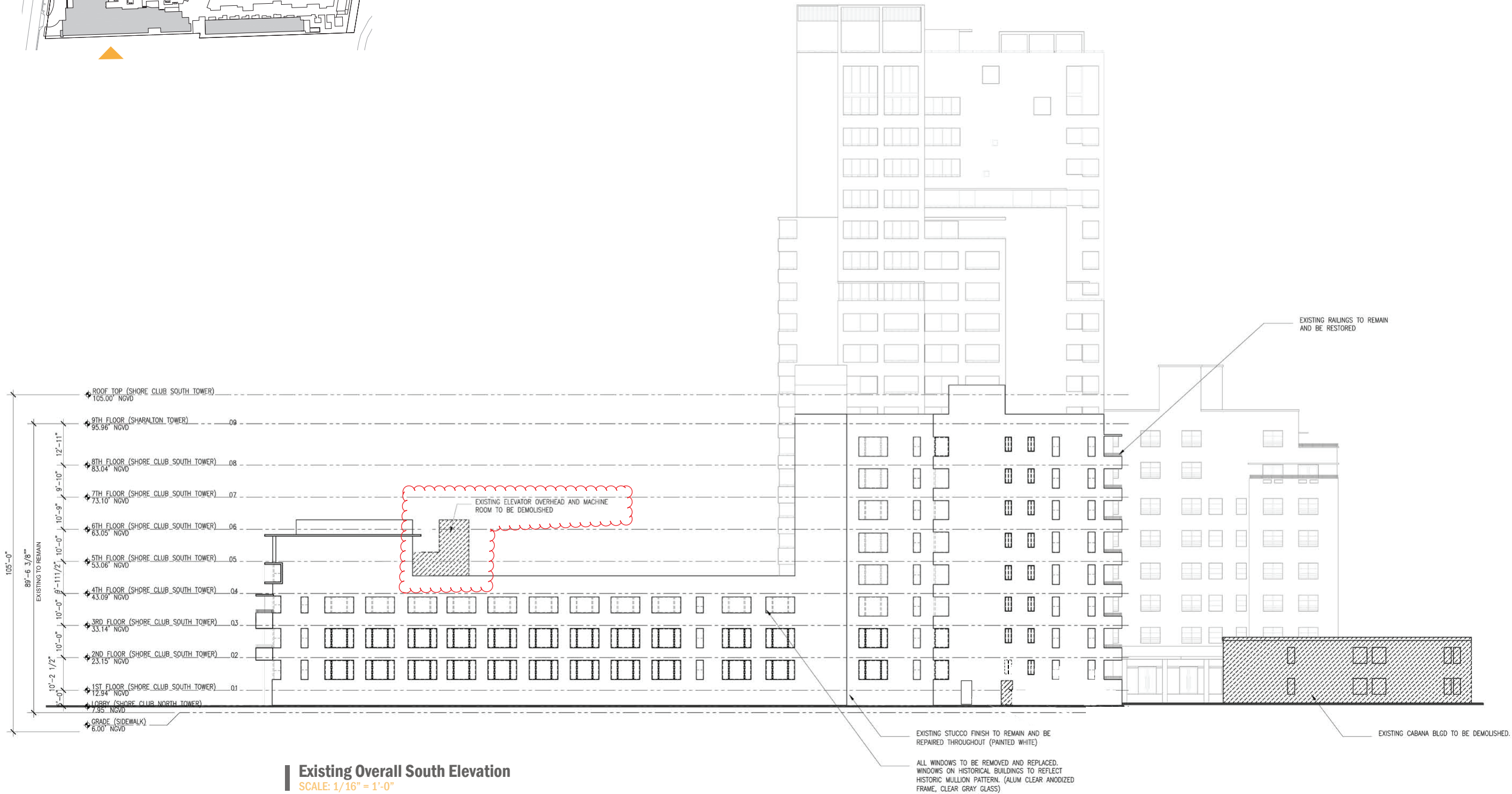
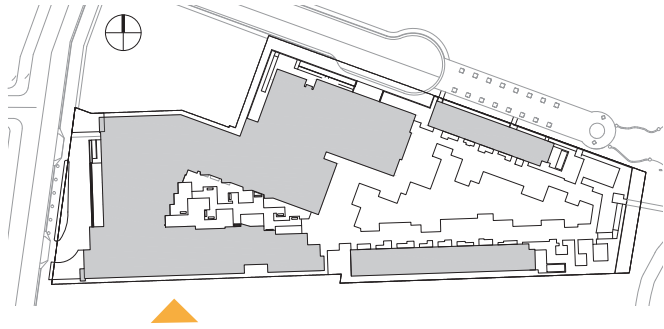
Existing Overall South Courtyard Elevations
SCALE: 1/16" = 1'-0"



PROJECT #: 14028.00



Revised Proposed Overall South Courtyard Elevations
SCALE: 1/16" = 1'-0"



PROJECT #: 14028.00

ELEVATIONS

THE SHORE CLUB

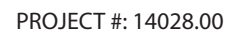
1901 COLLINS AVE - MIAMI, FL

ADD Inc ARCHITECTURE + DESIGN

One Biscayne Tower Suite 1670
Two South Biscayne Blvd, Miami, FL 33131
T: 305.482.8700
www.addinc.com

Lic#: AA26001507
Jonathan Cardello
Lic#: AR93391

HPB
04-14-2015
REV.
04-20-2015
06-05-2015
10-19-2015
03-17-2016



THE SHORE CLUB
1901 COLLINS AVE - MIAMI, FL



ADD inc ARCHITECTURE + DESIGN

One Biscayne Tower Suite 1670
Two South Biscayne Blvd. Miami, FL 33131
T. 305.482.8700
www.addinc.com

Lic#: AA26001507
Jonathan Cardello
Lic#: AP93391

3-17-2016



F.3a

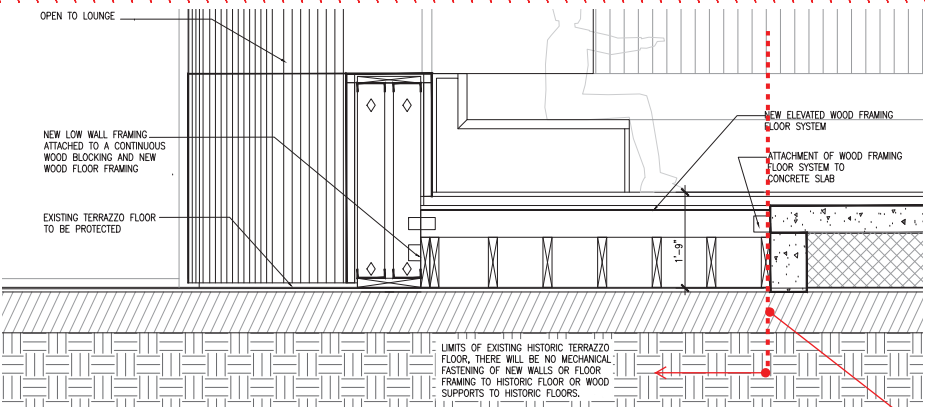


White Wood Cladding



Cabreuva Wood

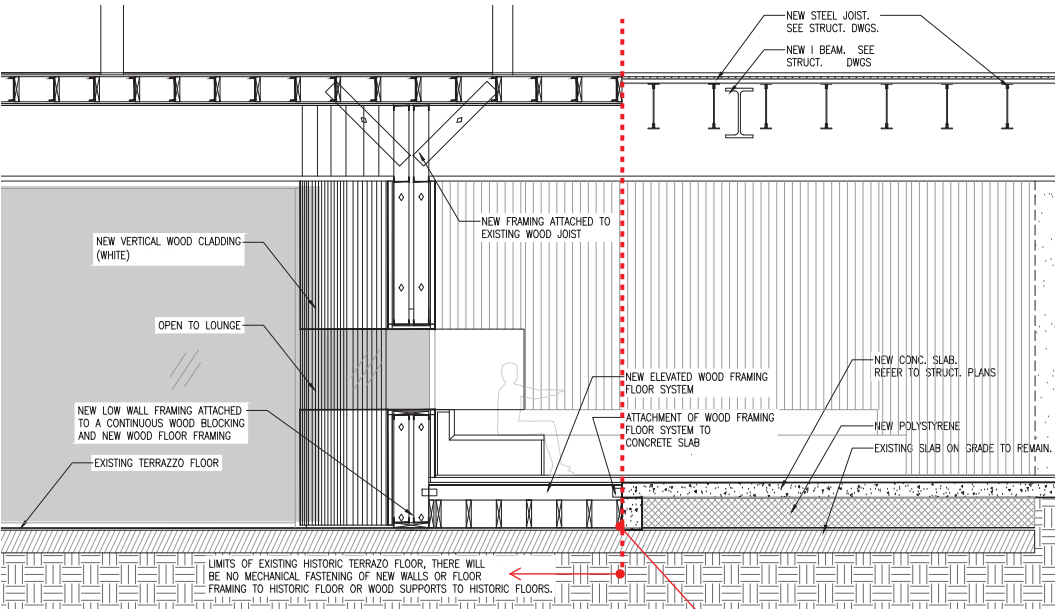
Terrazzo Flooring



Proposed Shore Club Lobby - Section Detail

SCALE: 1/2" = 1'-0"

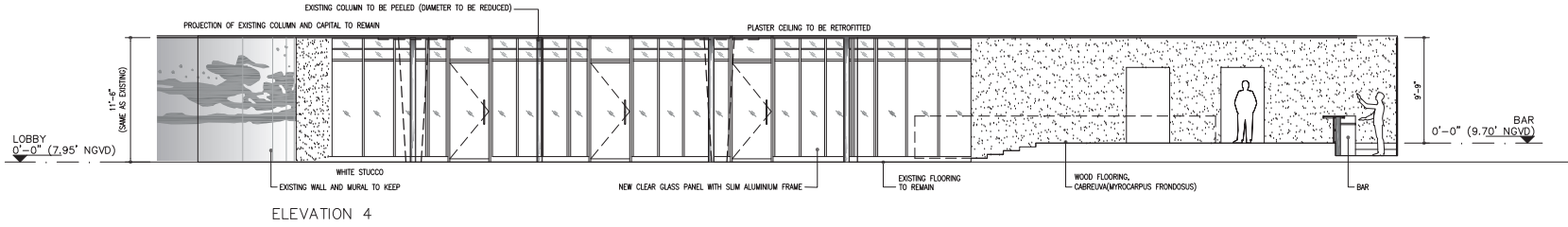
LIMITS OF ORIGINAL HISTORIC LOBBY TERRAZZO FLOOR



Proposed Shore Club Lobby - Section Curved Wall - A

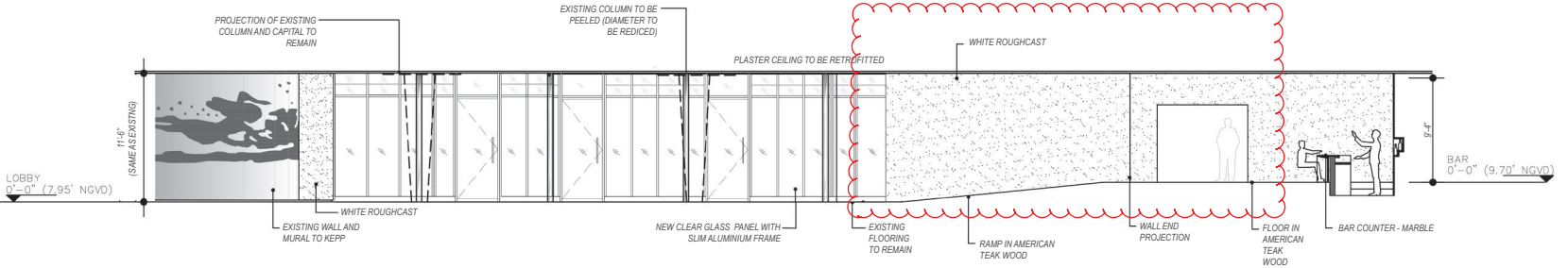
SCALE: 3/8" = 1'-0"

LIMITS OF ORIGINAL HISTORIC LOBBY TERRAZZO FLOOR



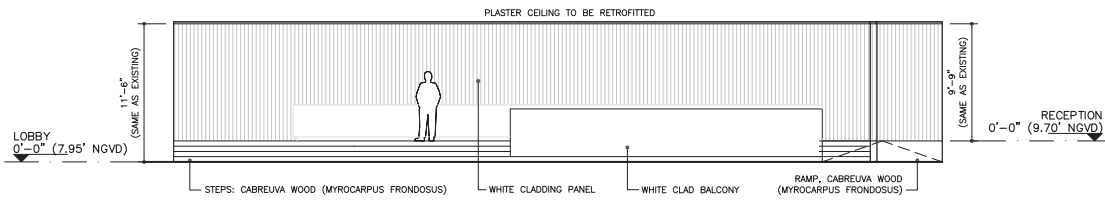
Previously Approved - Shore Club Lobby - Interior East Elevation - 4

SCALE: 1/8" = 1'-0"



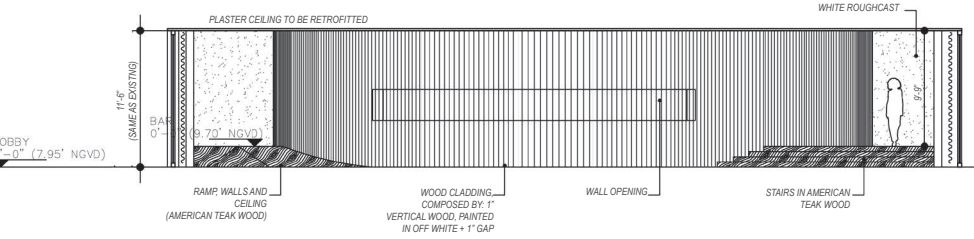
Proposed Shore Club Lobby - Interior East Elevation - 4

SCALE: 1/8" = 1'-0"



Previously Approved - Shore Club Lobby - Interior South Elevation - 3

SCALE: 1/8" = 1'-0"



Proposed Shore Club Lobby - Interior South Elevation - 3

SCALE: 1/8" = 1'-0"