

CITY OF MIAMI BEACH

Bus Shelters Project
November 2017



Executive Summary

As part of their long-range development plans the City of Miami Beach has proposed to adopt a new, iconic bus shelter design that will enhance the transit experience, improve the quality of transit services in the City and provide a readily identifiable structure representative of and unique to Miami Beach.

To assist in that goal the City retained the services of a team of professionals including ACAI Associates Architects, Pininfarina Design and Engineering, and TLC Engineering to develop a prototype shelter design adaptable to different shelter types required throughout the City based on current and projected ridership. As part of the process in selecting the design for the shelter the team was challenged to provide a series of conceptual designs which are illustrated in this presentation. The selected concepts will be further developed as necessary, for the City to select a single design to be further developed and presented to various City boards for review and approval.

One of the goals for the design is its adaptability for use for each of the following shelter types which are further illustrated in this document.

Minimal Shelter that can be used in locations with limited space, low ridership and single family residential locations

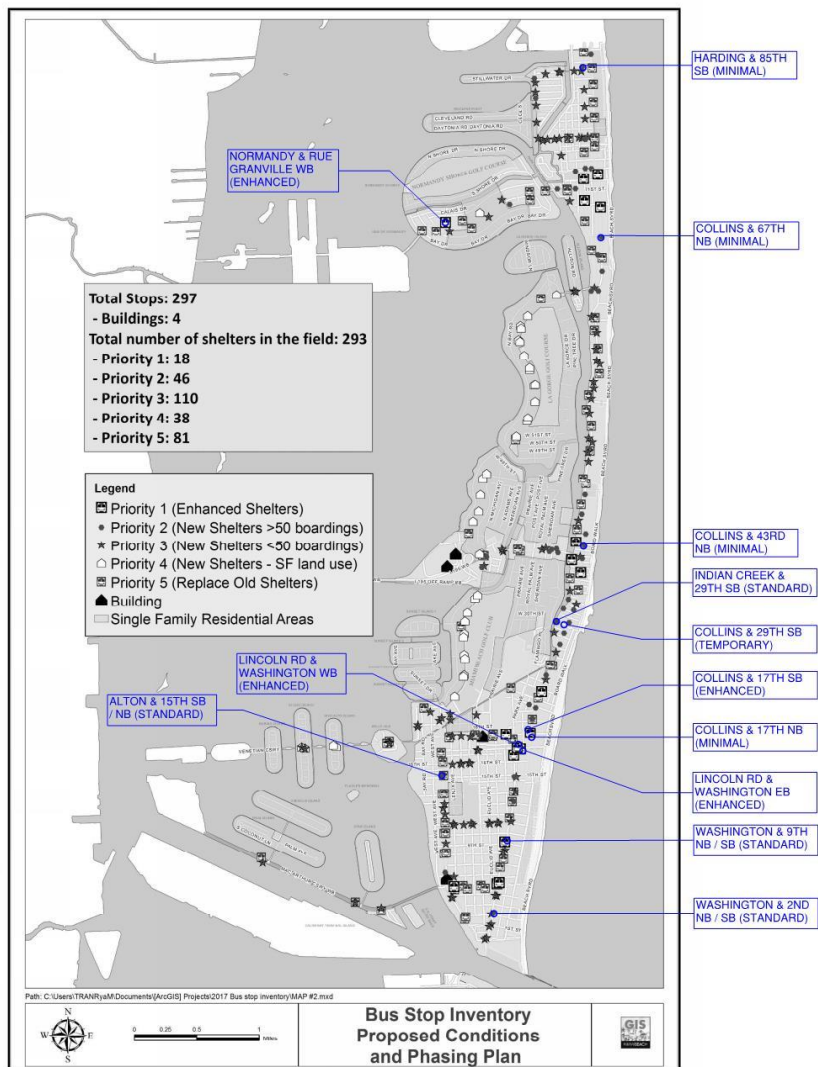
Standard Shelter – to be used in locations where there is sufficient space and average ridership

Enhanced Shelter – to be used in locations where there is sufficient space and a large ridership

Temporary Shelter – can be easily installed and removed where existing bus stops are temporarily relocated during construction projects

Additional elements to be incorporated into the selected concepts particularly for the Standard and Enhanced Shelters include advertising, telecommunication, security, ITS and wireless connectivity systems along with accessibility components including audible and tactile elements.

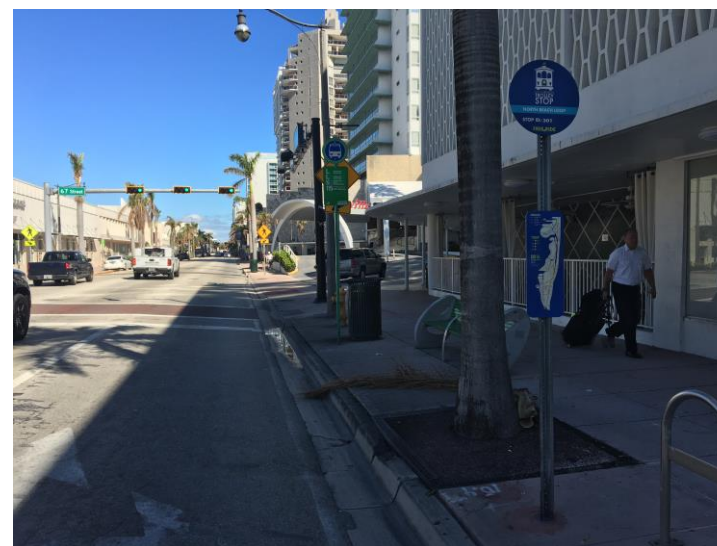
PRESENTATION GOAL :
Design an **iconic** bus shelter for the
city of Miami Beach



Harding & 85th SB (minimal)



Normandy & Rue Granville WB (enhanced)



Collins & 67th NB (minimal)



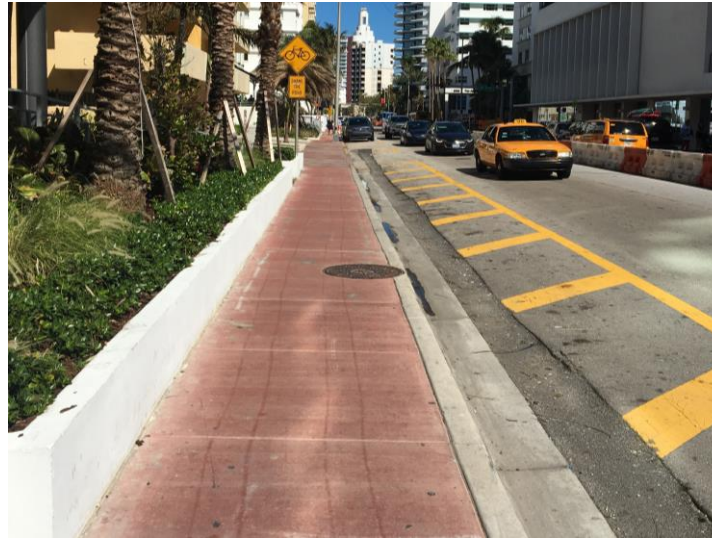
Collins and 43rd NB (minimal)

OVERVIEW future

Photo documentation of 16 existing stops



Indian Creek & 29th SB (standard)



Collins & 29th SB
(temporary)



Collins & 17th SB (enhanced)



Collins & 17th NB (minimal)



Lincoln Rd & Washington EB (enhanced)



Lincoln Rd & Washington WB (enhanced)



Washington & 9th SB (standard)



Washington & 9th NB (standard)



Washington & 2nd SB (standard)



Washington & 2nd NB (standard)



Alton & 15th SB (standard)



Alton & 15th NB (standard)

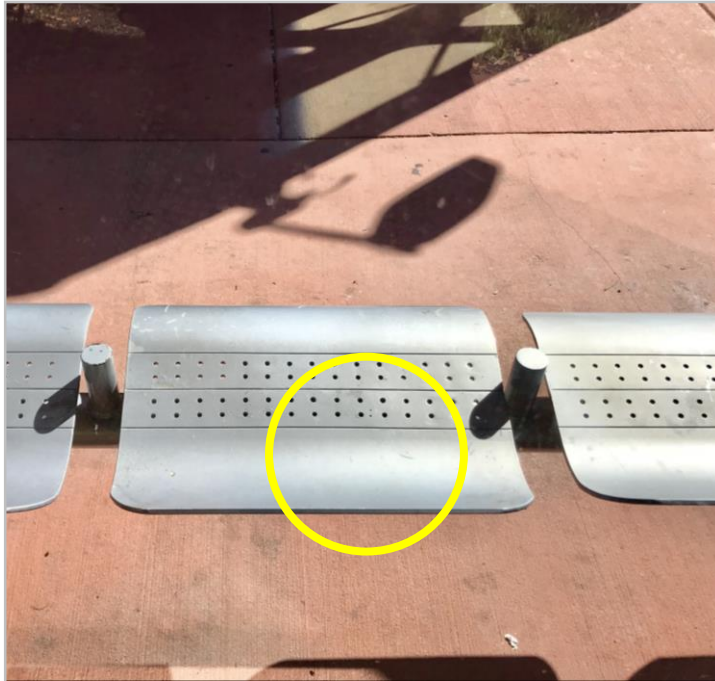


- Not enough shade (people waiting behind the shelter)
- Graphics, info, maps are confusing (3 different transportation systems)
- Different design language between elements
- People waiting outside of the shelter
- Floor is the most dirty area and rust is a real problem for maintenance



RESEARCH Findings on 22 Collins Ave. Park

Architecture elements we consider important to celebrate with a contemporary swing



- Not enough shade (people waiting behind the shelter)
- During sun hours it is difficult to use the seats because of temperature
- Solar panels are not well integrated to the shelter
- High frequency people using bikes



RESEARCH Findings on 1020 Alton Rd (whole foods)

Architecture elements we consider important to celebrate with a contemporary swing



Main color palette



Secondary color palette (color accents)

MIAMI MOOBOARD

Visual elements that represent SOBE soul
We identified some keywords: Fun, Happy, Playful, Lively, Dynamic, Energetic, Vital

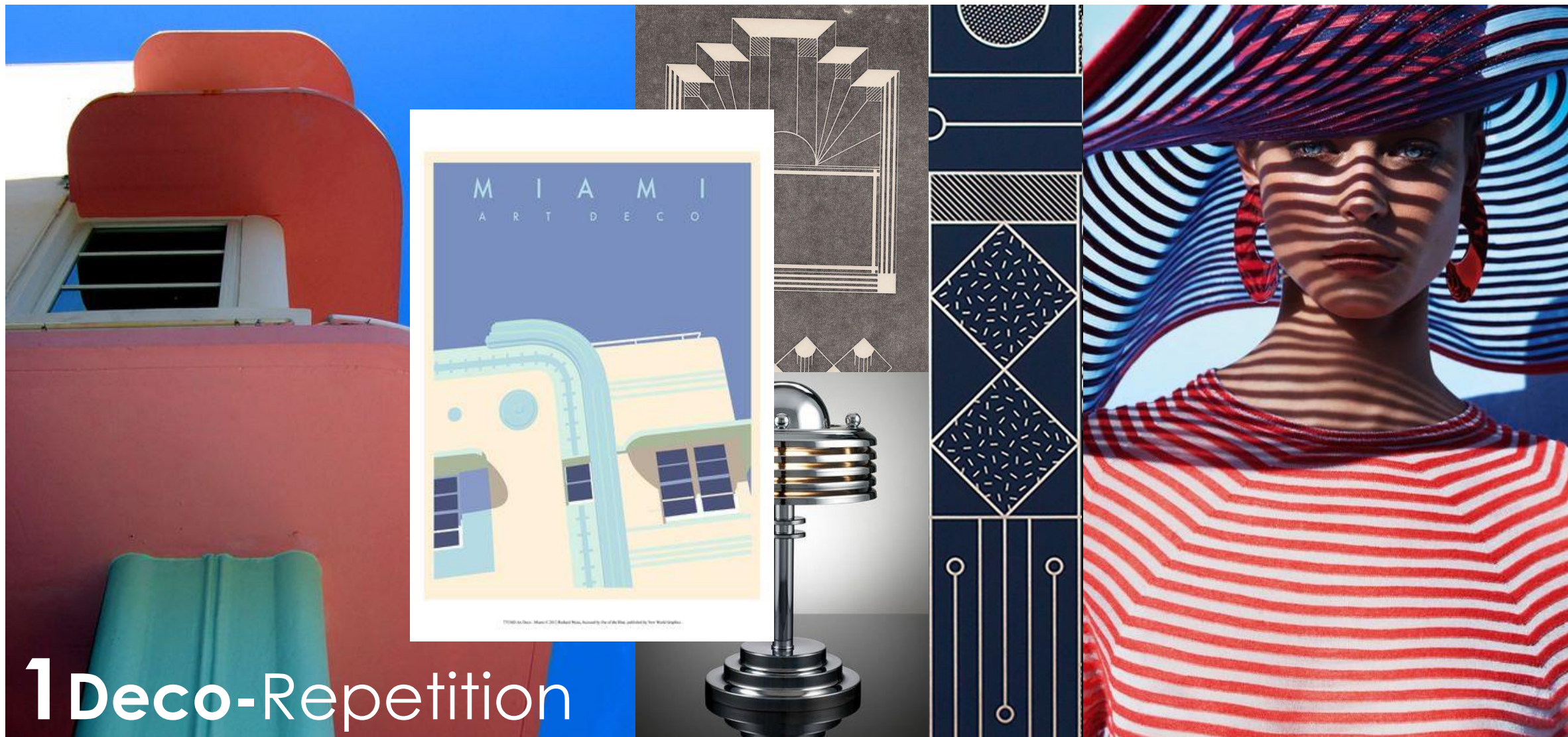
DESIGN THEMES:

1 Deco-Repetition

2 Beach-Reflection

3 Eclectic-Vibes

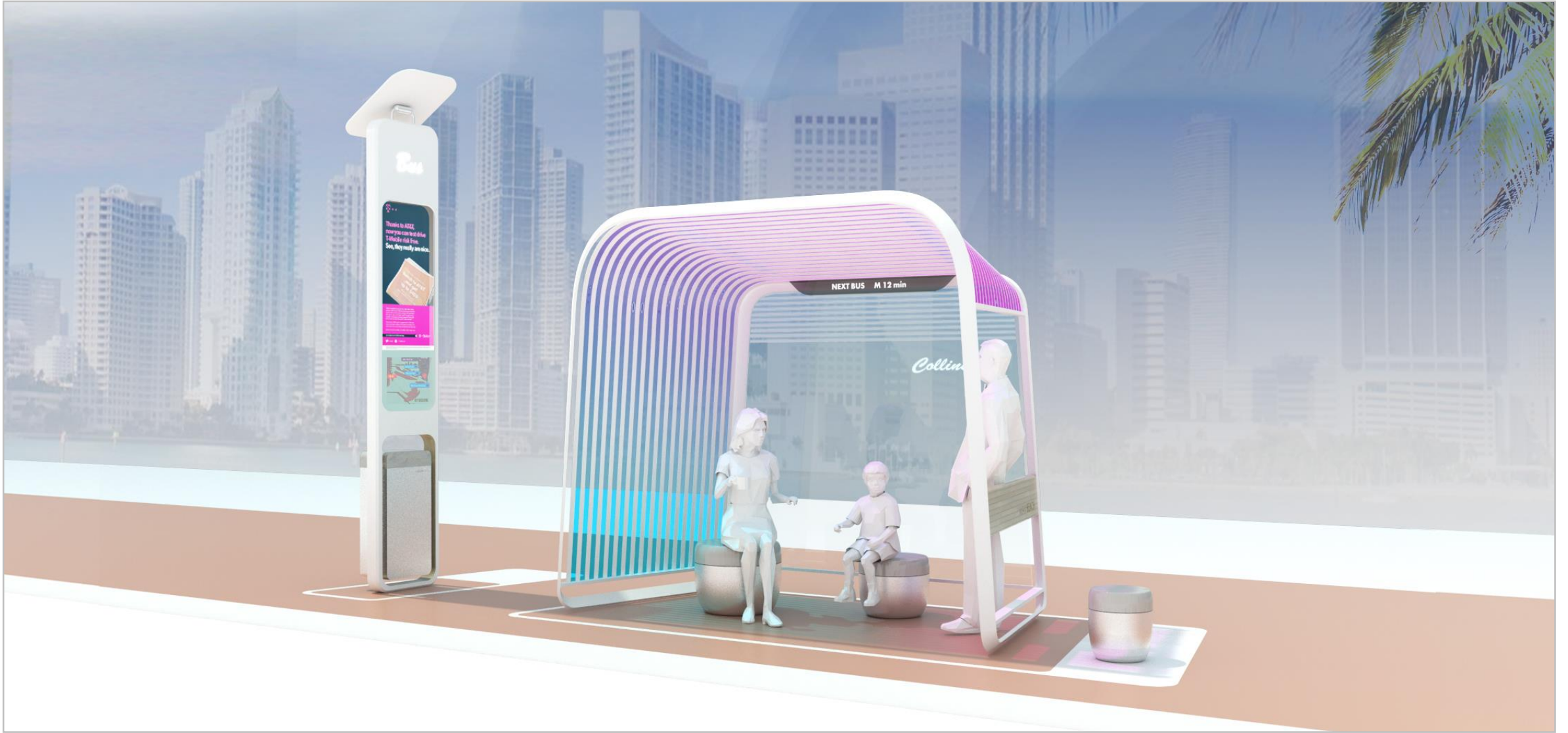
4 Smart-translucency



1 Deco-Repetition

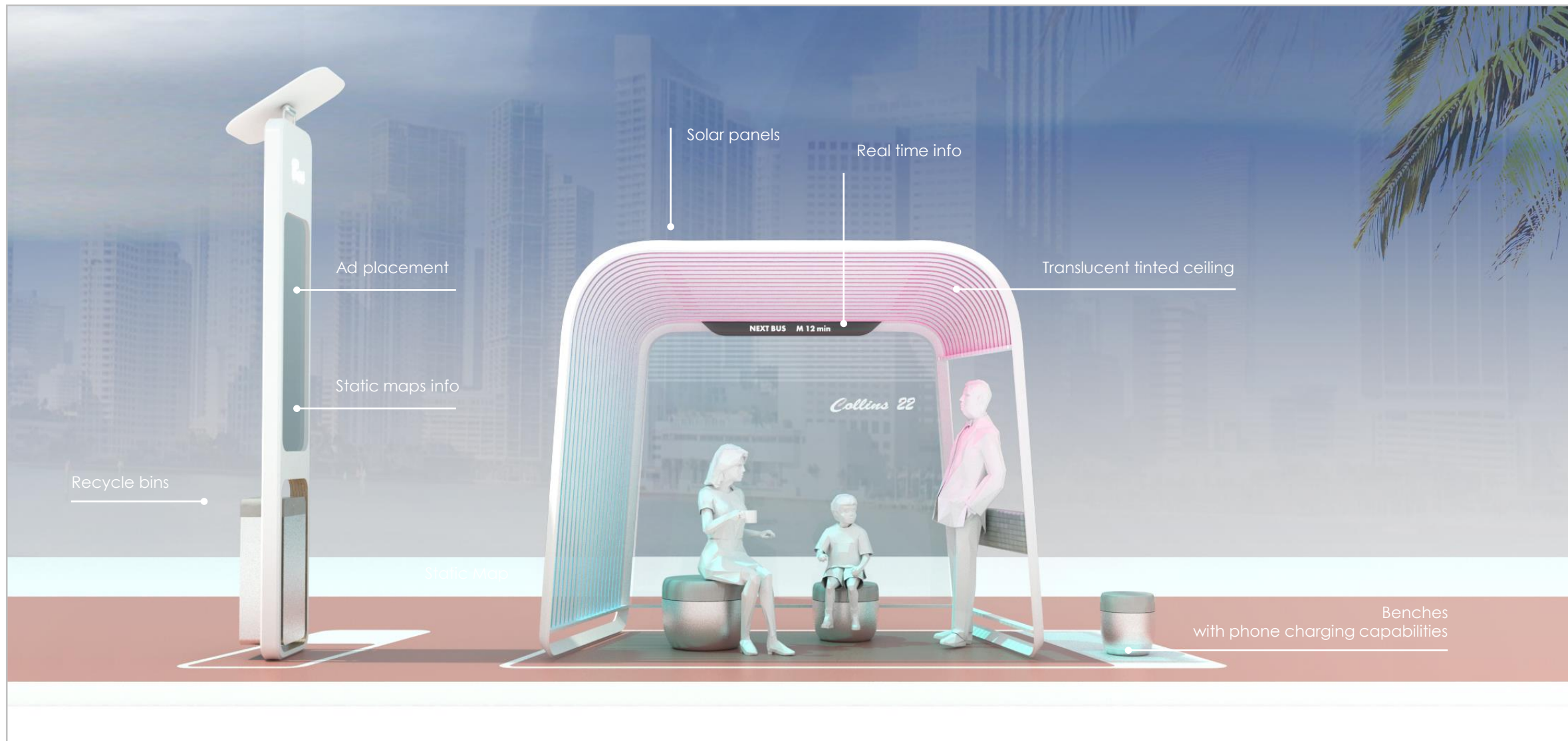
THEME ONE

Architecture elements we consider important to celebrate with a contemporary swing



1 Deco-Repetition

Architecture elements we consider important to celebrate with a contemporary swing



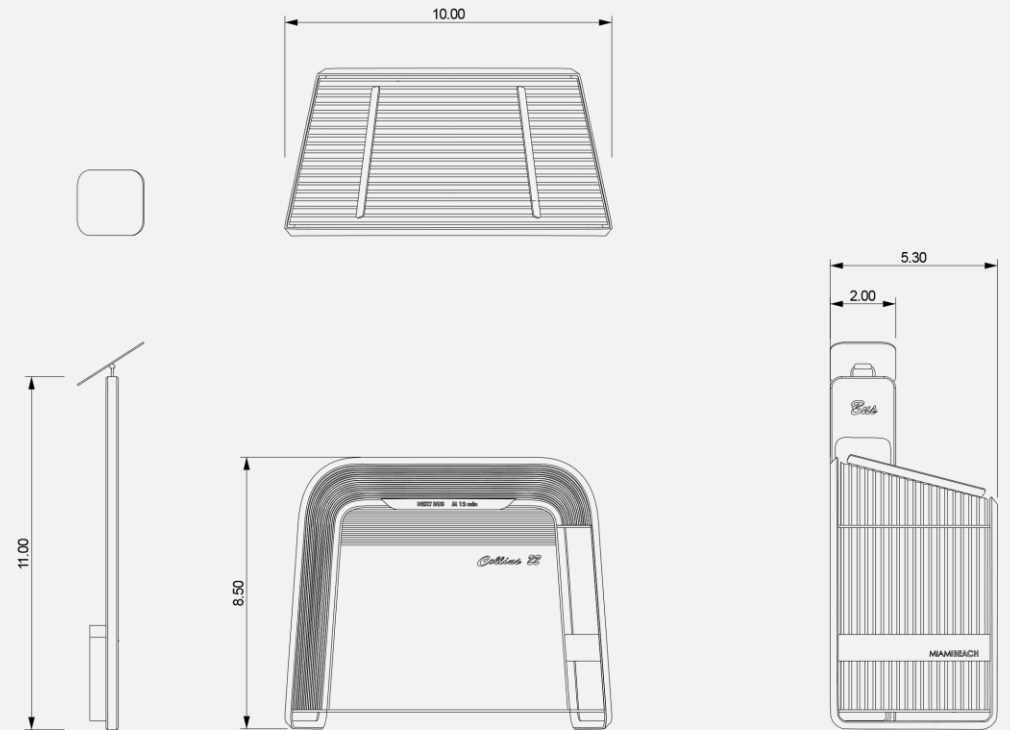
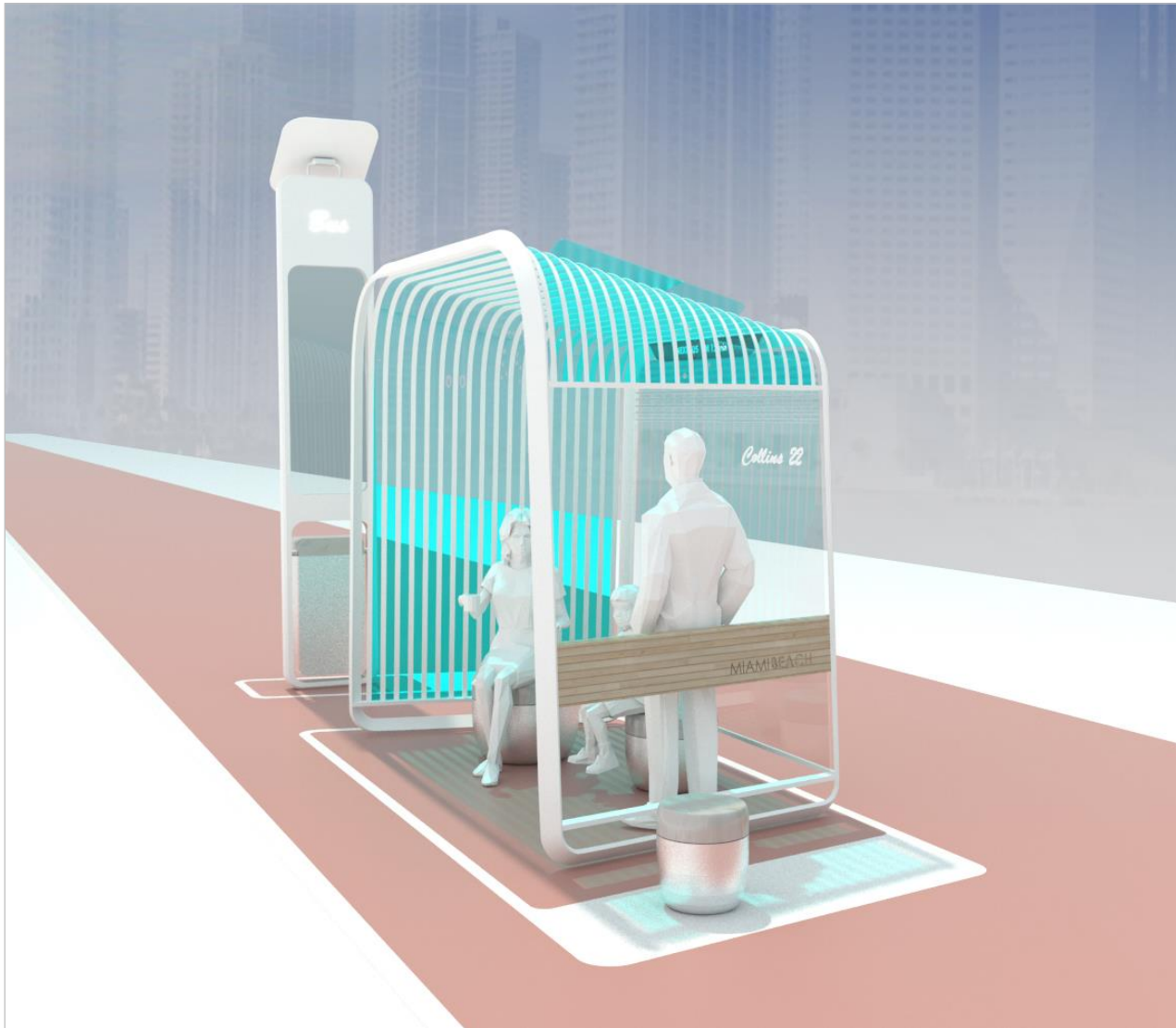
1 Deco-Repetition

Architecture elements we consider important to celebrate with a contemporary swing



1 Deco-Repetition

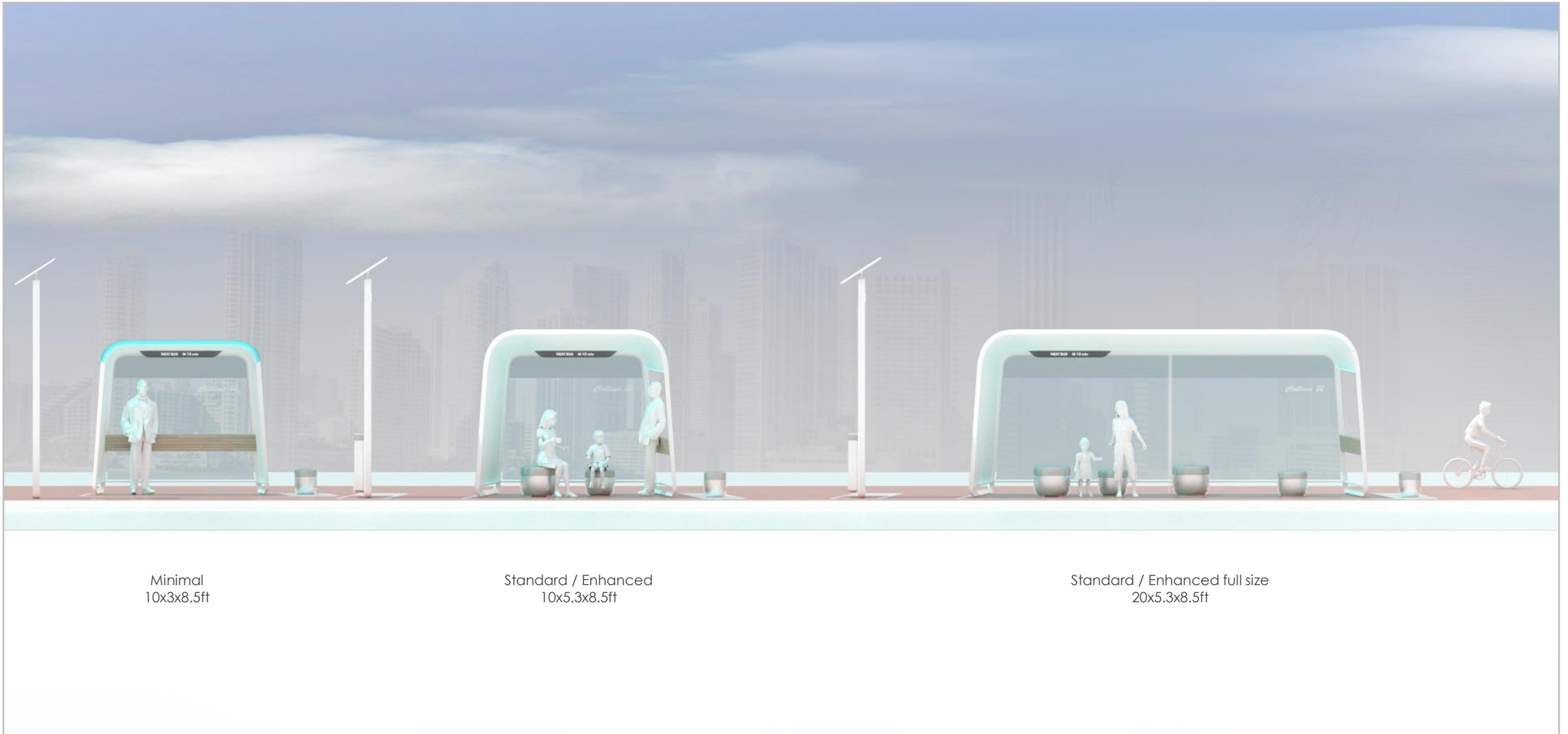
Architecture elements we consider important to celebrate with a contemporary swing



Proportion

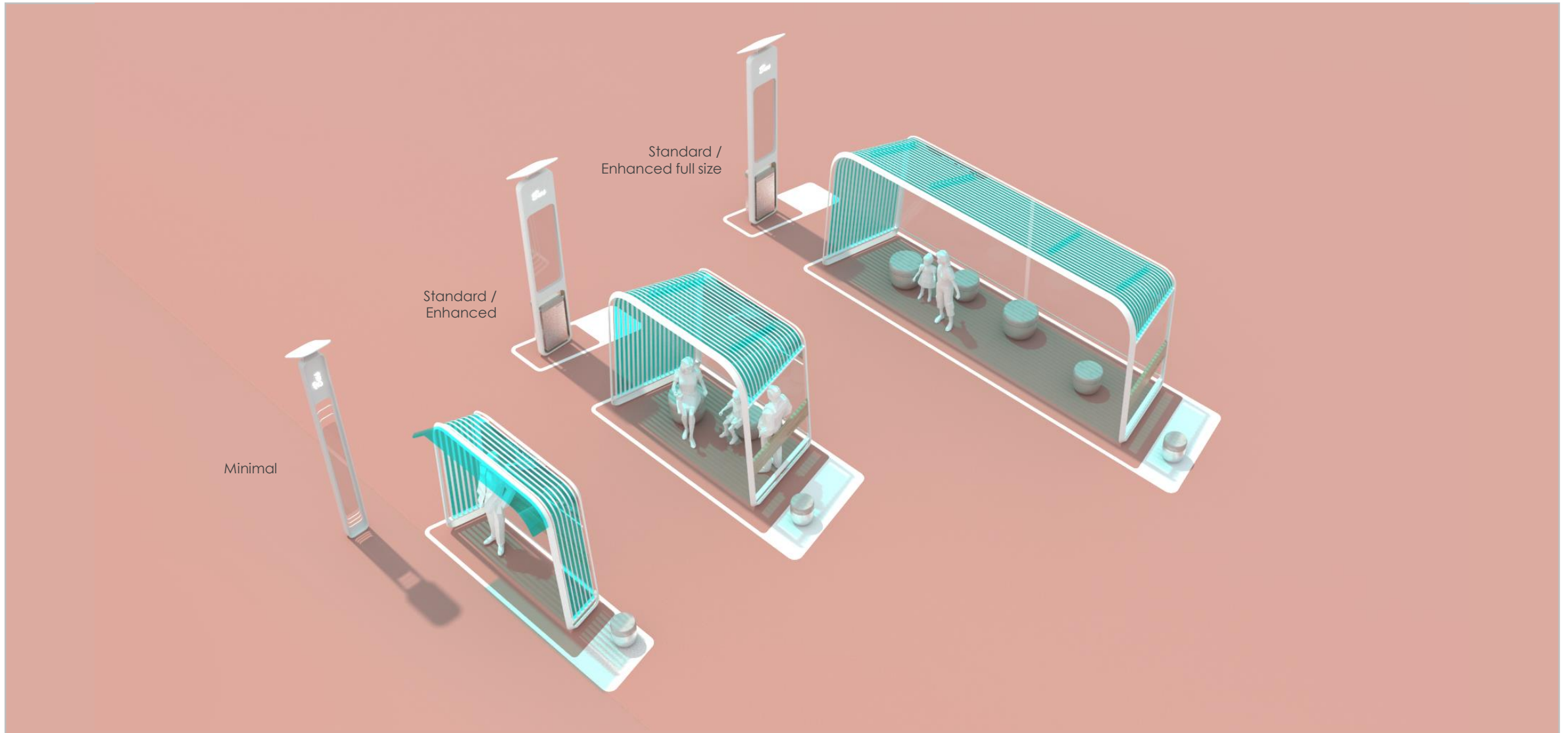
1Deco-Repetition

Architecture elements we consider important to celebrate with a contemporary swing



1 Deco-Repetition

Architecture elements we consider important to celebrate with a contemporary swing



1 Deco-Repetition

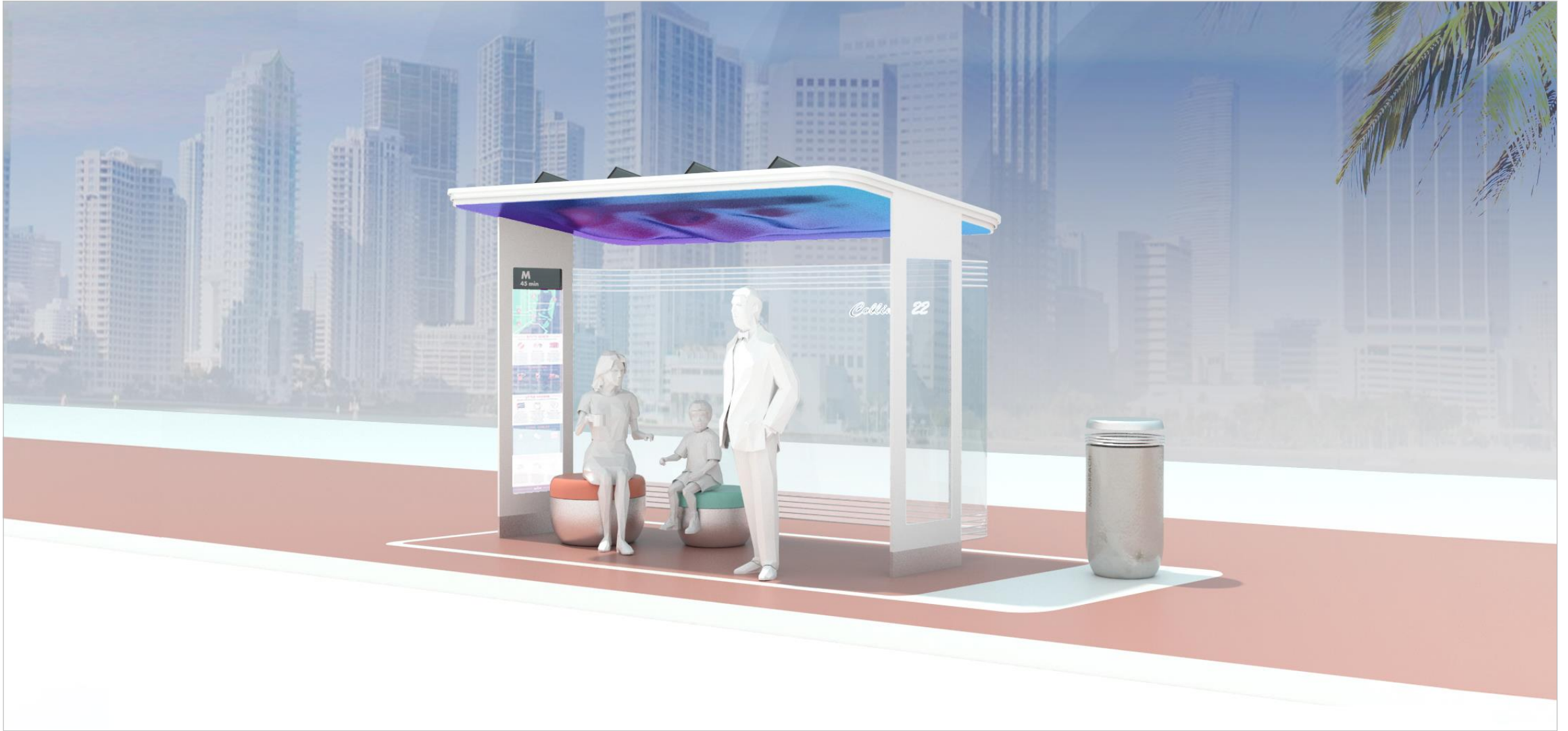
Architecture elements we consider important to celebrate with a contemporary swing



2 Beach-Reflection

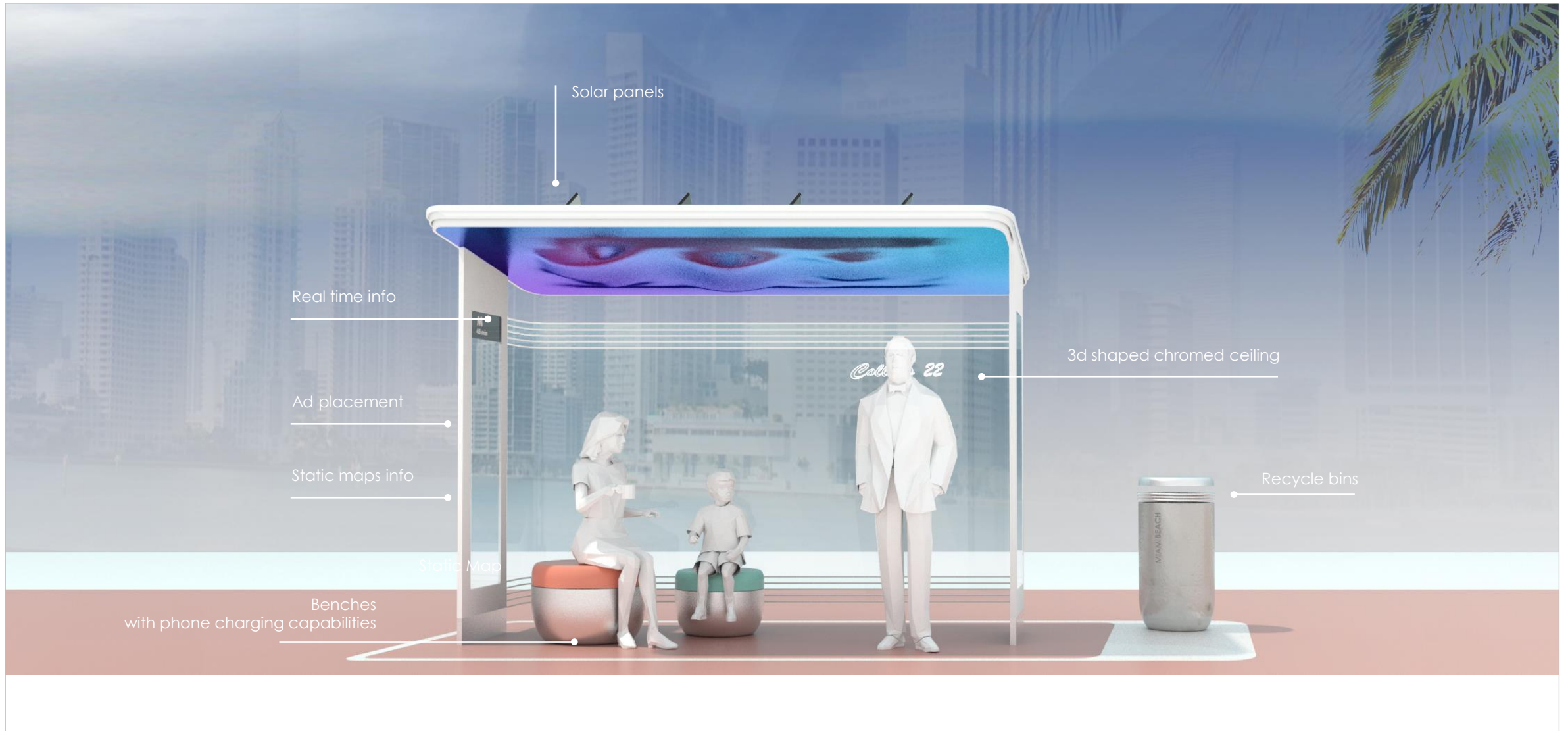
THEME TWO

Celebrating the sea, the sand and SoBe people lifestyle



2 Beach-Reflection

Celebrating the sea, the sand and SoBe lifestyle



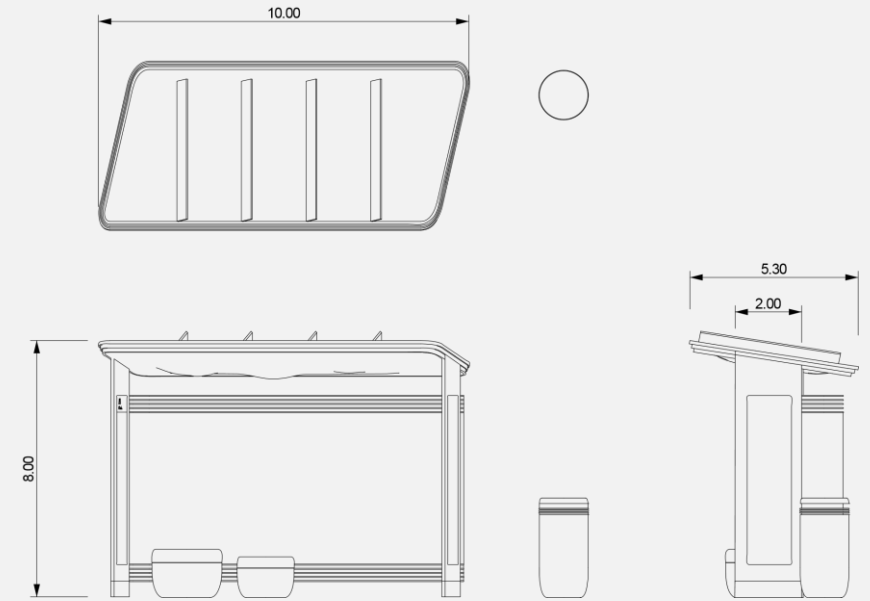
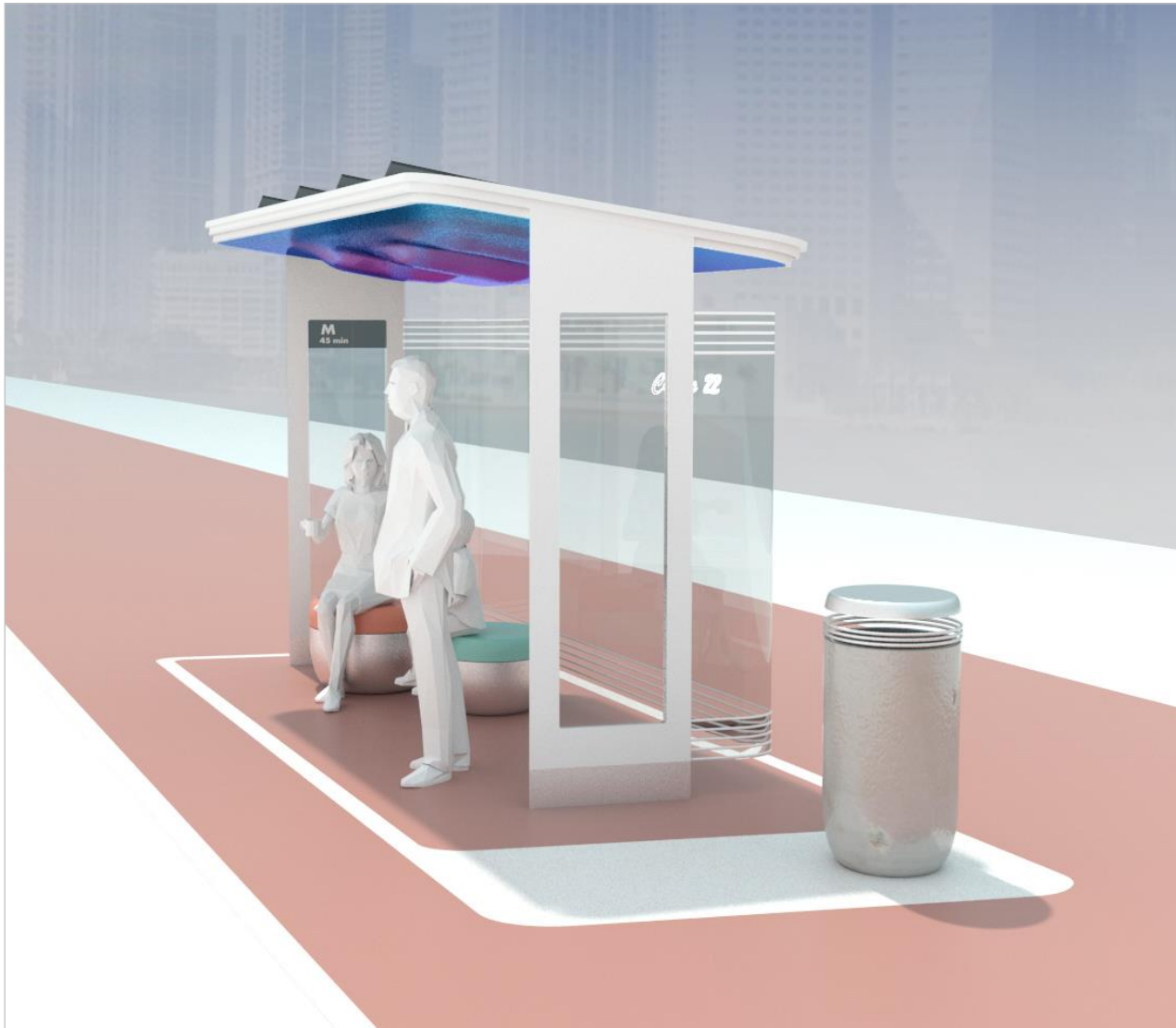
2 Beach-Reflection

Celebrating the sea, the sand and SoBe lifestyle



2 Beach-Reflection

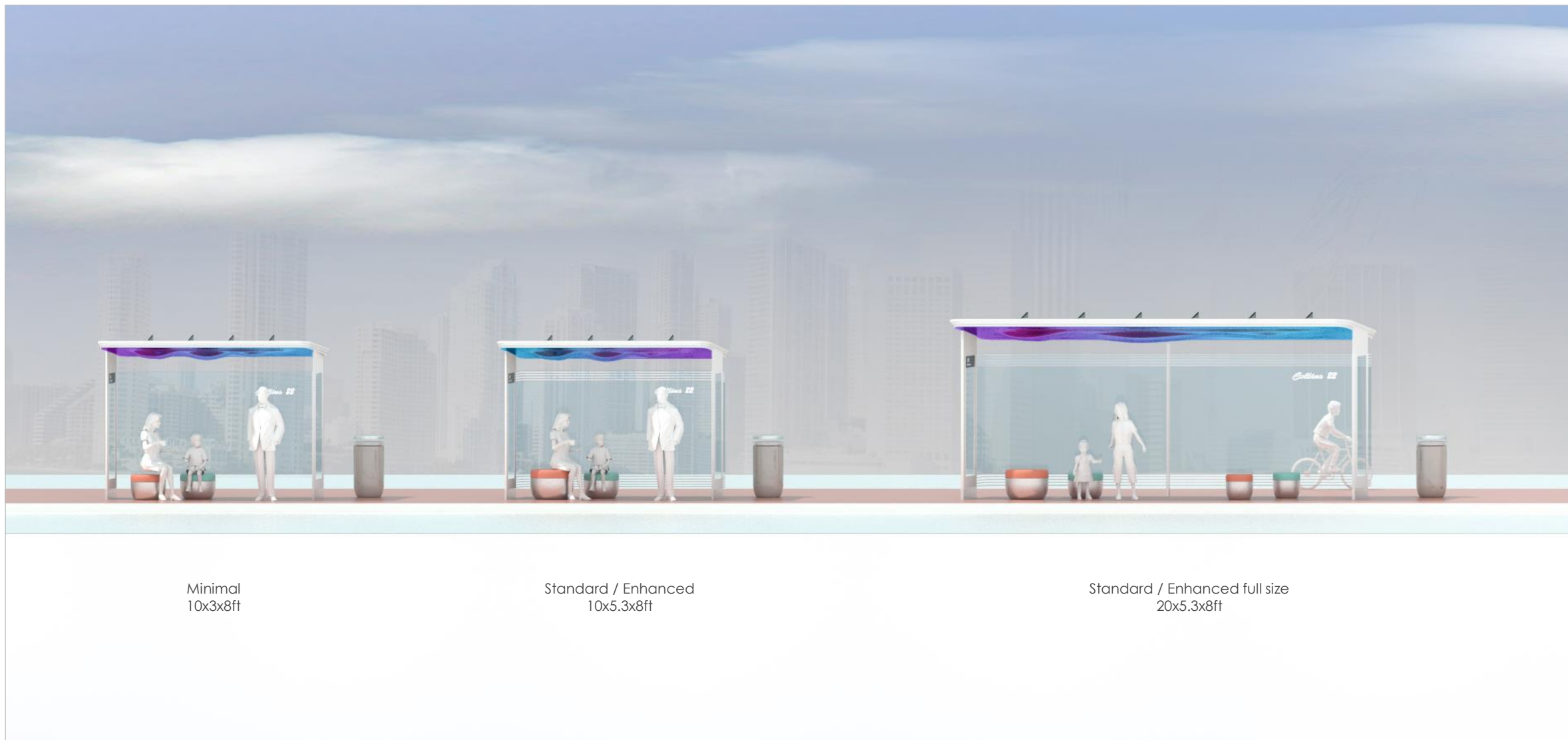
Celebrating the sea, the sand and SoBe lifestyle



Proportion

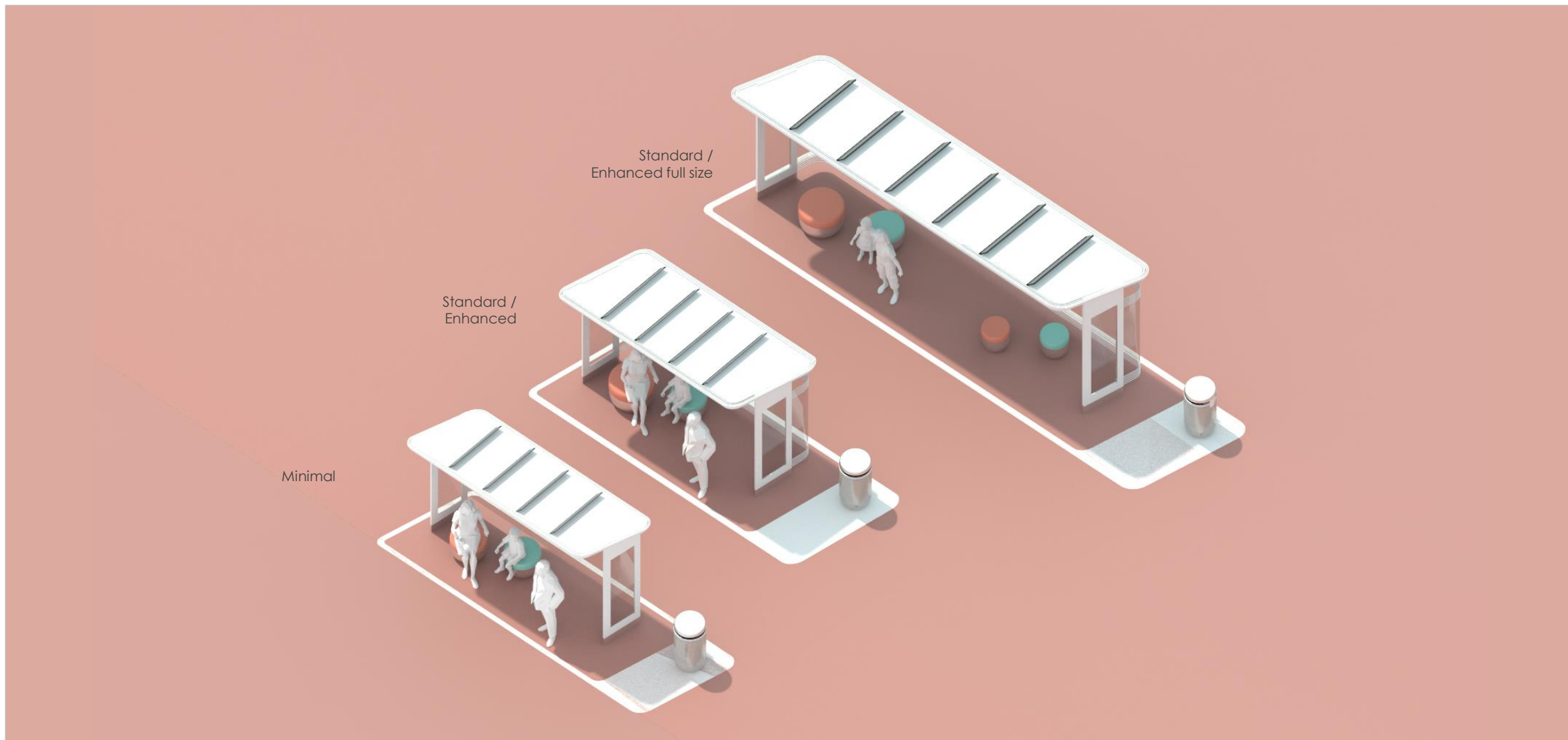
2 Beach-Reflection

Celebrating the sea, the sand and SoBe lifestyle



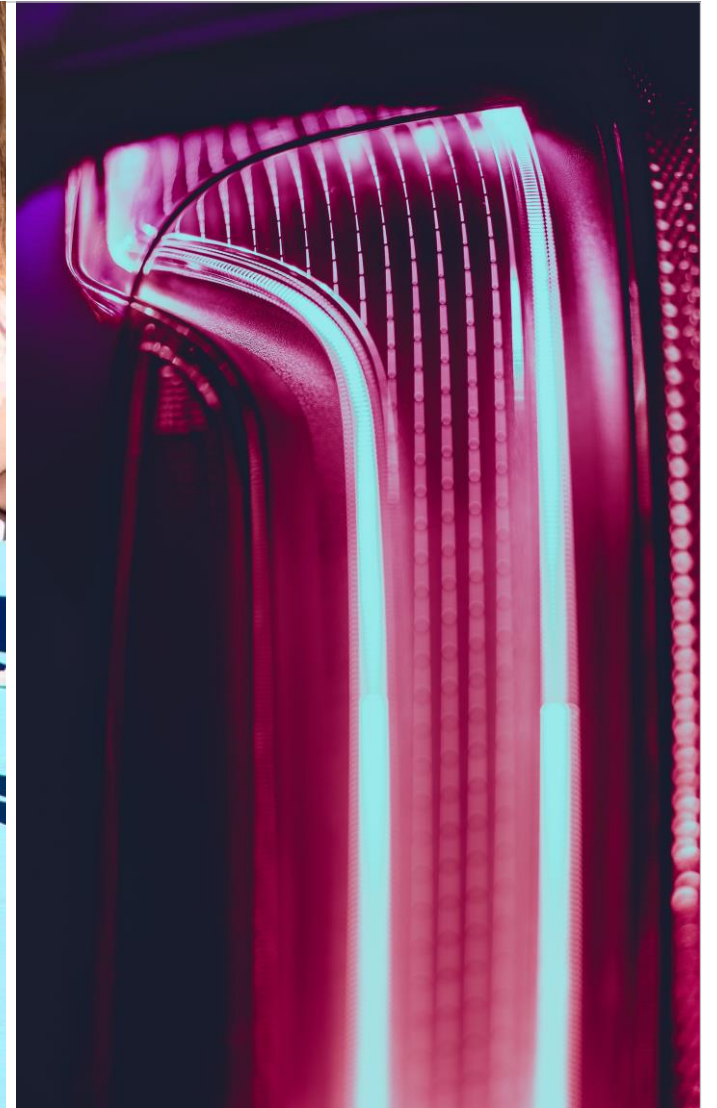
2 Beach-Reflection

Celebrating the sea, the sand and SoBe lifestyle



2 Beach-Reflection

Celebrating the sea, the sand and SoBe lifestyle



3 Eclectic-vibes

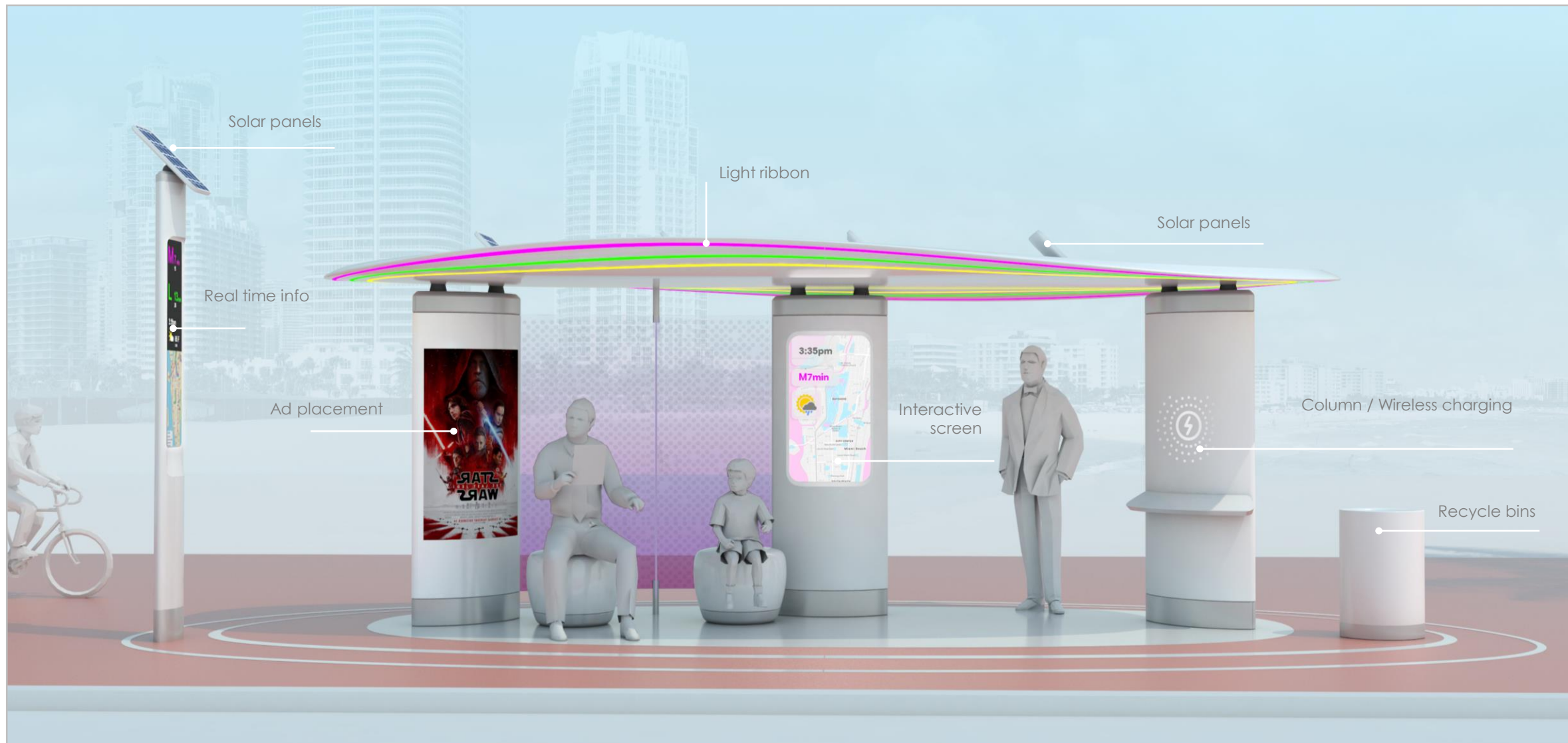
THEME THREE

Creating new urban and vibrant environments



3 Eclectic-vibes

Creating new urban and vibrant environments



3 Eclectic-vibes

Creating new urban and vibrant environments



3 Eclectic-vibes

Creating new urban and vibrant environments



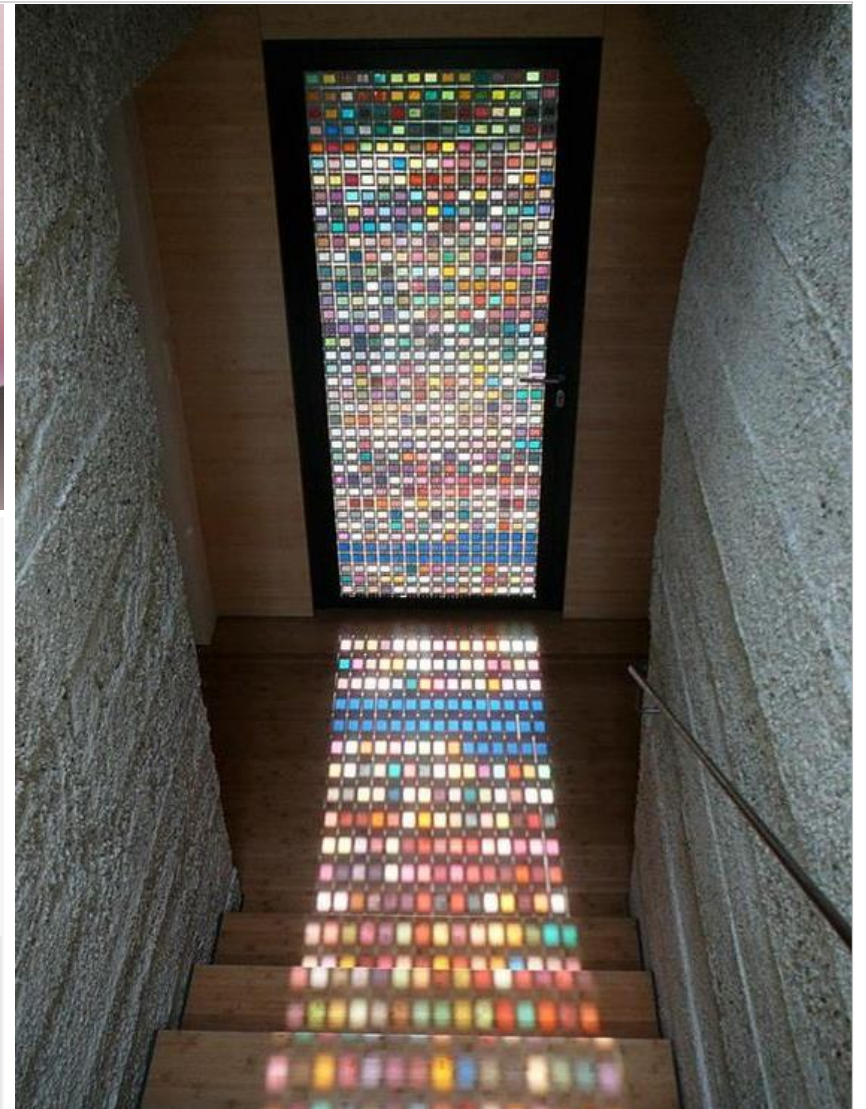
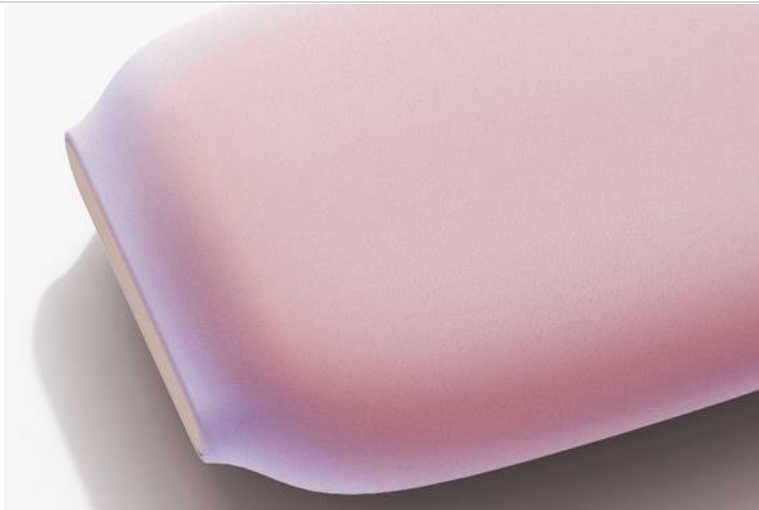
3 Eclectic-vibes

Creating new urban and vibrant environments



3 Eclectic-vibes

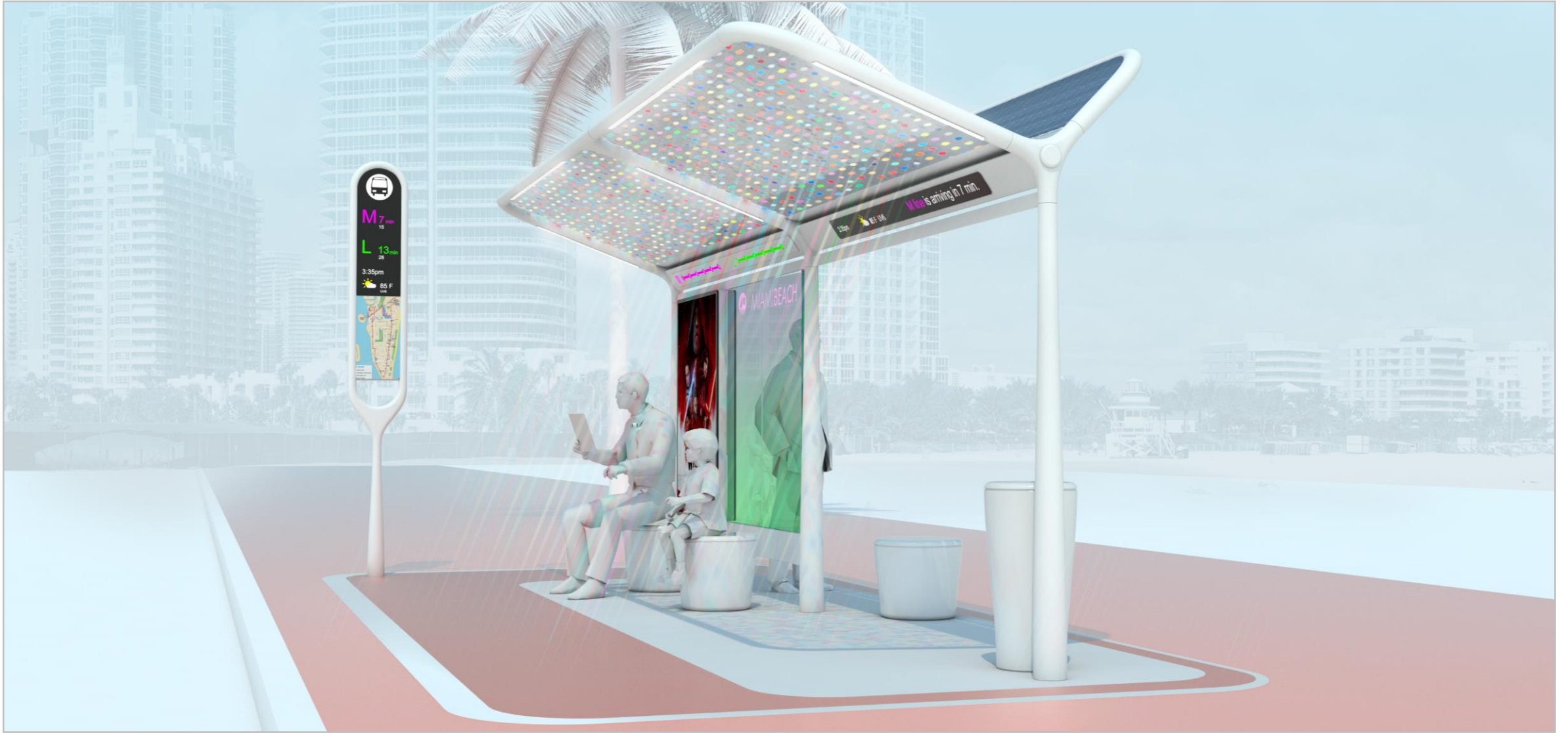
Creating new urban and vibrant environments



4 Smart - translucency

THEME FOUR

Understand the light and offer a smart and unique experience for commuters. Statement looking into the future



4 Smart- translucency

Understand the light and offer a smart and unique experience for commuters. Statement looking into the future



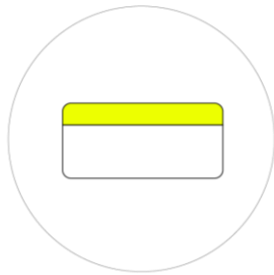
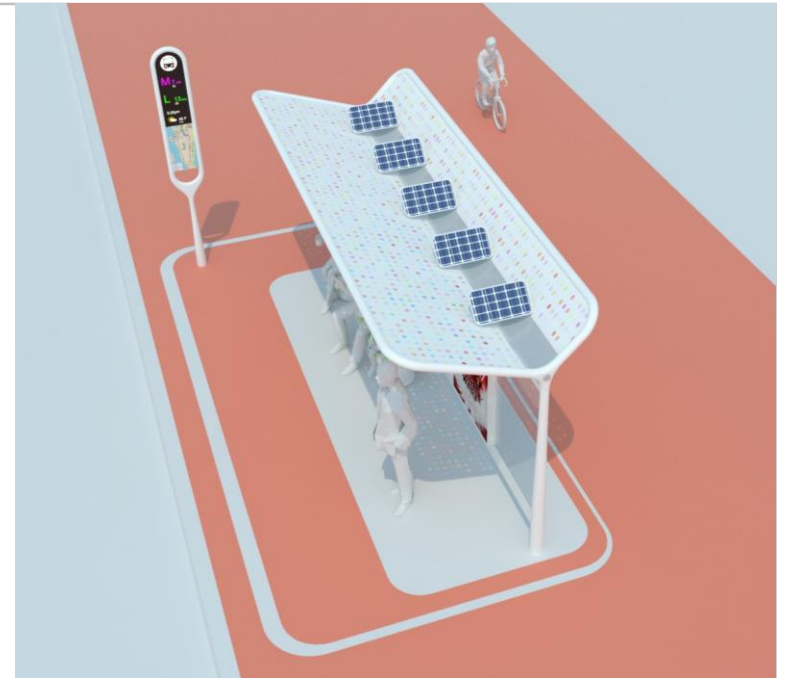
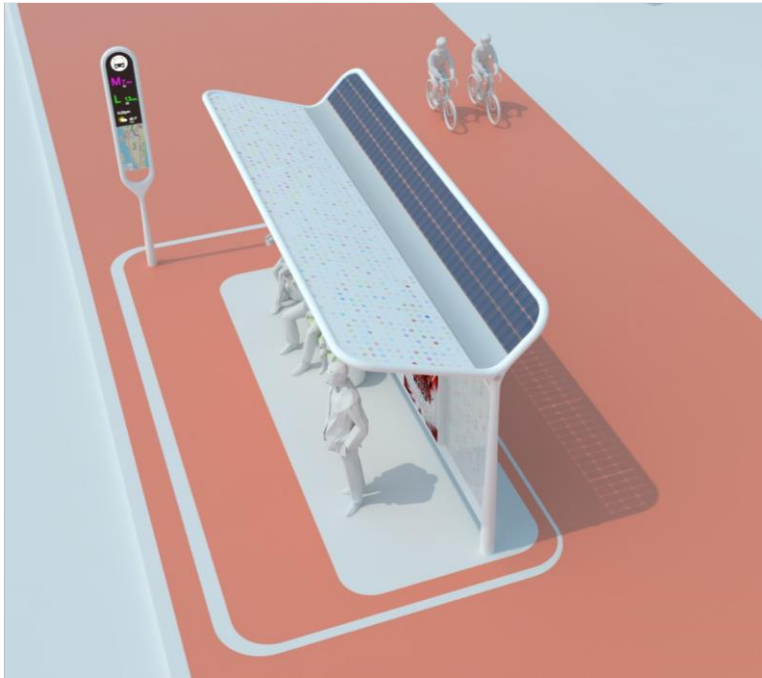
4 Smart- translucency

Understand the light and offer a smart and unique experience for commuters. Statement looking into the future

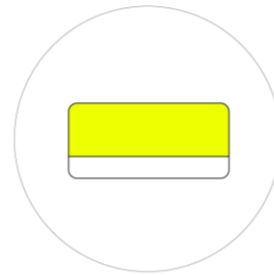


4 Smart- translucency

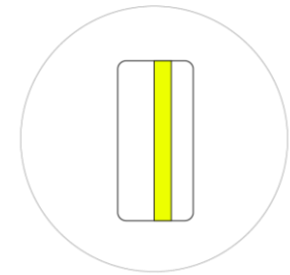
Understand the light and offer a smart and unique experience for commuters. Statement looking into the future



S



S



S

4 Smart- translucency

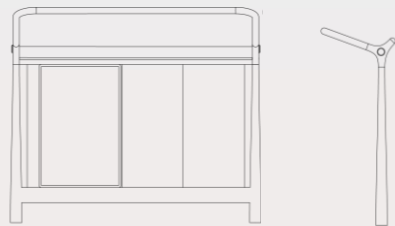
Understand the light and offer a smart and unique experience for commuters. Statement looking into the future



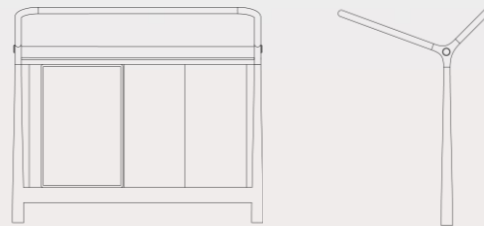
4 Smart- translucency

Understand the light and offer a smart and unique experience for commuters. Statement looking into the future

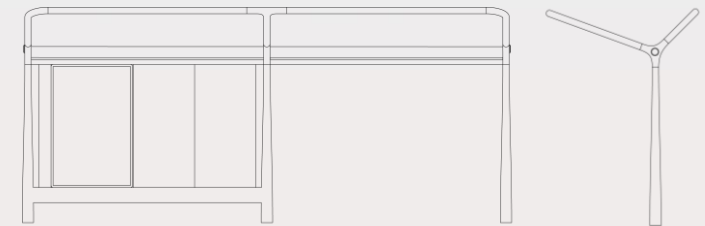
Minimal
10x3x7ft



Standard / Enhanced
10x6.6x7ft

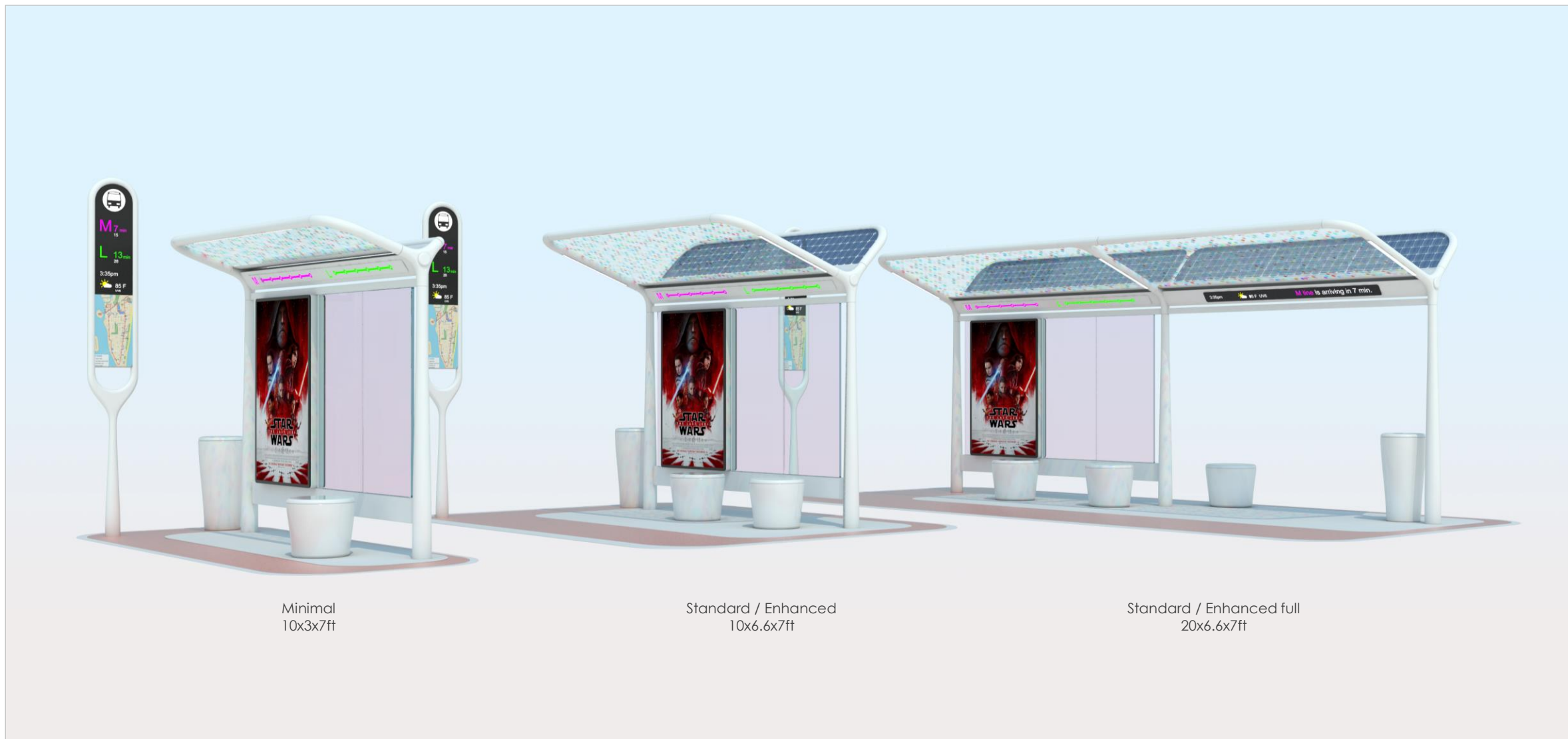


Standard / Enhanced full
size 20x6.6x7ft



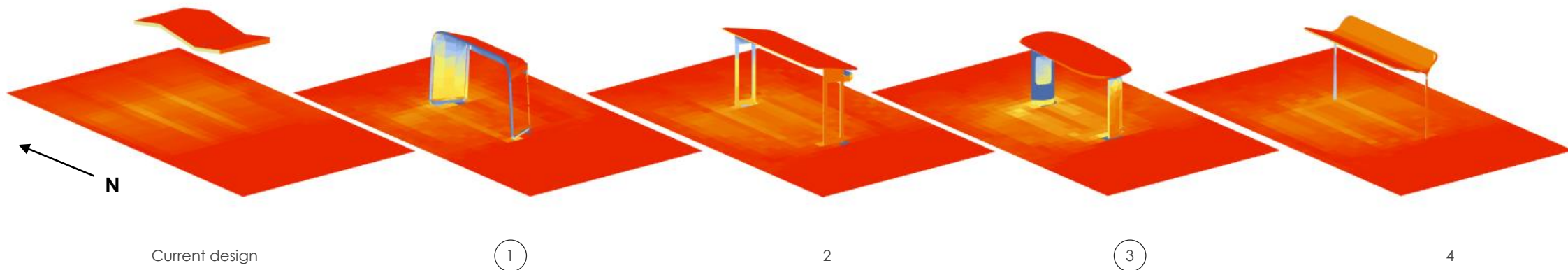
4 Smart- translucency

Creating new urban and vibrant environments



4 Smart- translucency

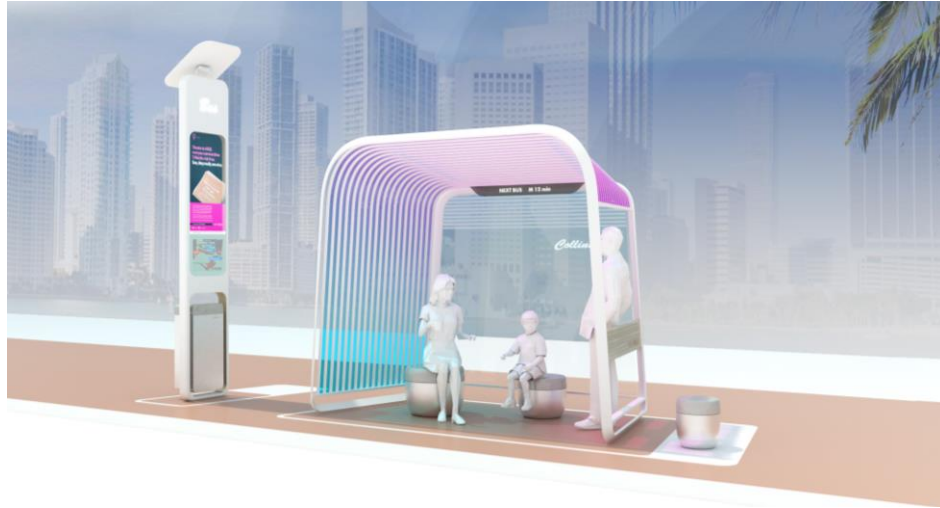
Understand the light and offer a smart and unique experience for commuters. Statement looking into the future



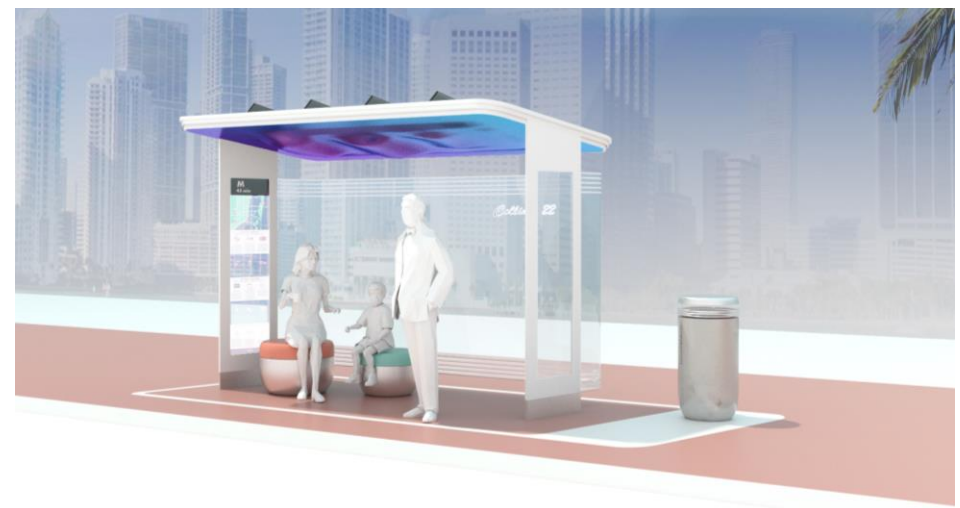
Year round sun shade study

- Red circle - 100%
- Yellow circle - 50%

1



2



3

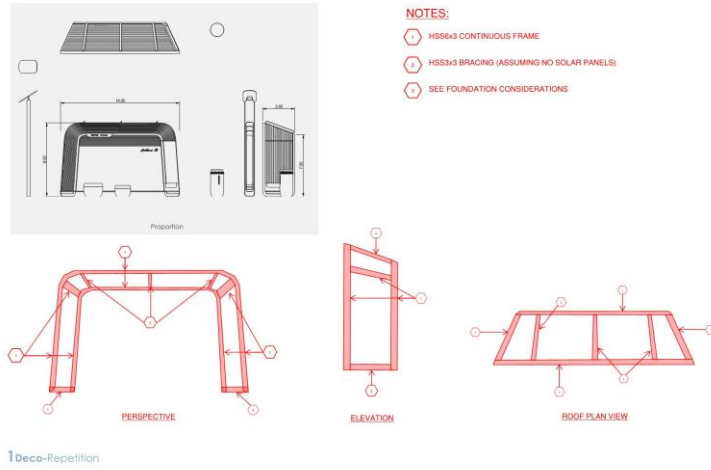


4

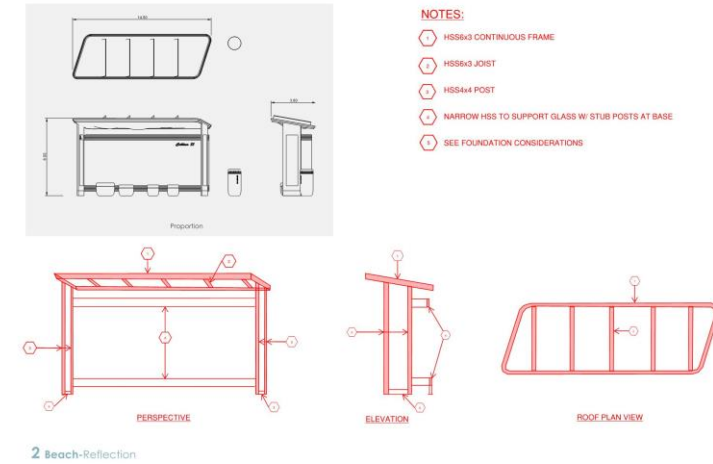


COMPARISON

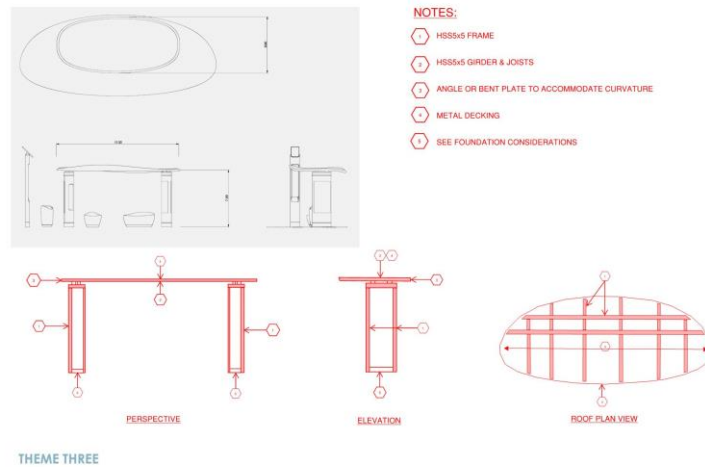
1



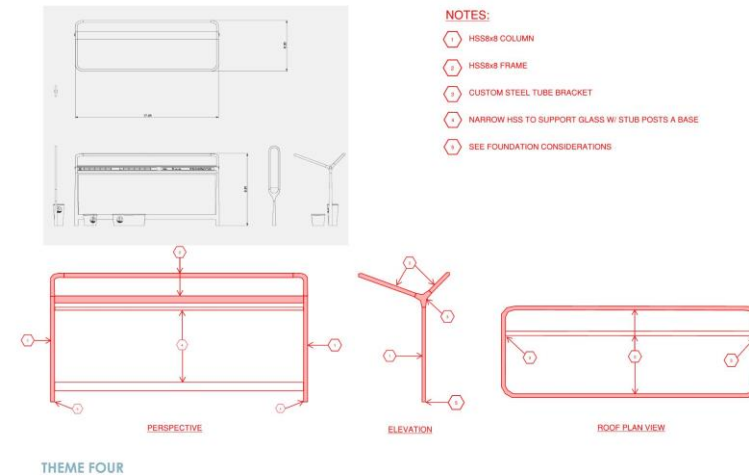
2



3

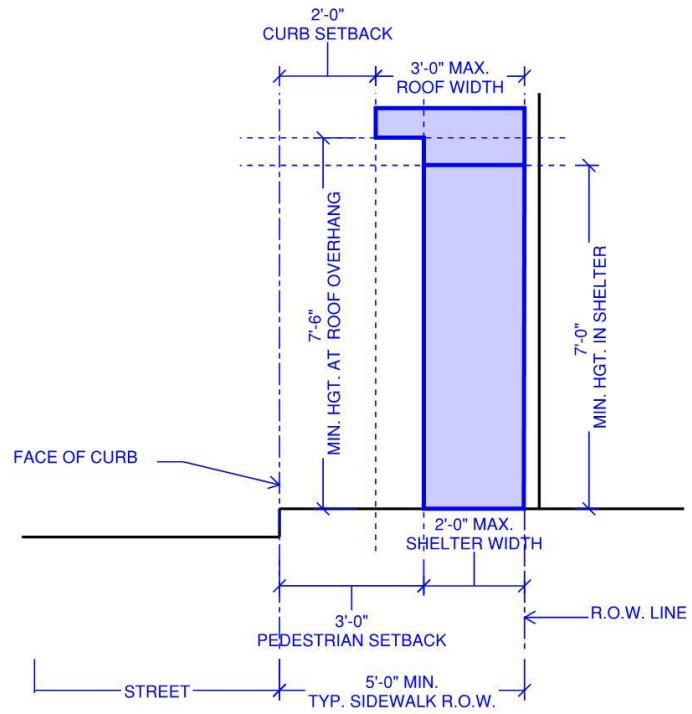


4

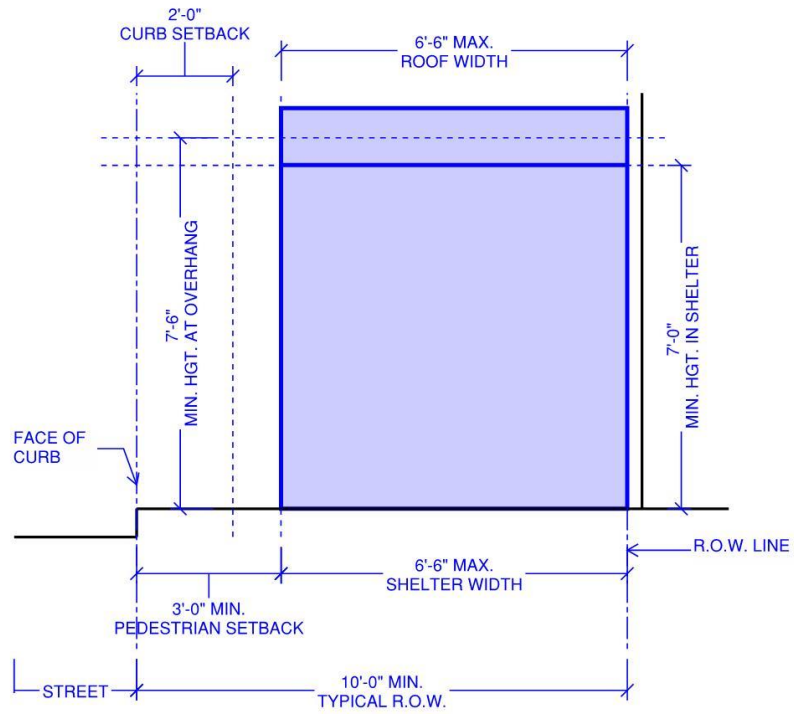


STRUCTURAL STUDIES

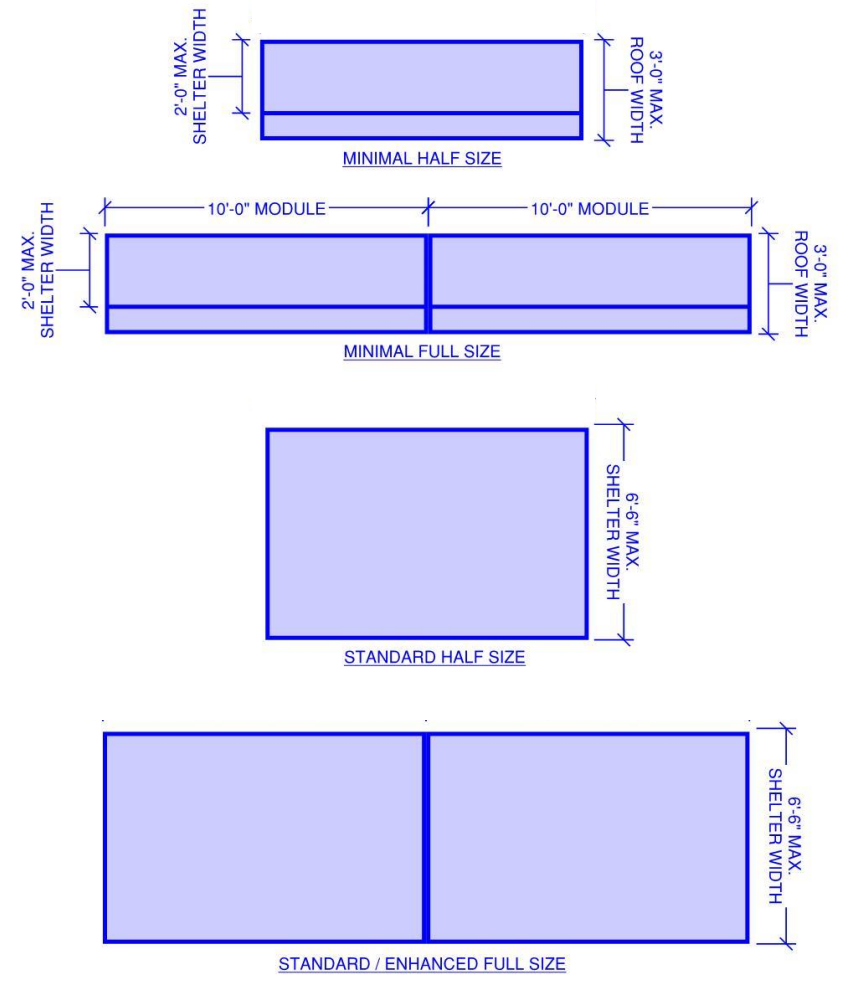
NOTE:
TO MATCH EXISTING SHELTER SIZES, STANDARD / ENHANCED ROOF WIDTH IS LIMITED TO SHELTER WIDTH OF 6'-6"



MINIMAL BUS STOP - WIDTH & HEIGHT



STANDARD / ENHANCED BUS STOP - WIDTH & HEIGHT



BUS STOP WIDTH & LENGTH

BUS STOP STATIC ENVELOPES

CITY OF MIAMI BEACH

Thank you

