

OCEAN TERRACE
7400 Ocean Terrace
Miami Beach, FL 33141

A mixed used project by
Ocean Terrace Holdings
1035 North Miami Av.
Miami, FL 33136
305.324.4700

enea
garden design
Enea Garden Design Inc.
7320 N.W. 42nd Court, Suite 105
Miami, Florida 33156, USA
T+1 305.576.6702 | F+1 305.576.6703
www.enea.ch | info.miami@enea.ch
REG No. LC26000339

SEAL:

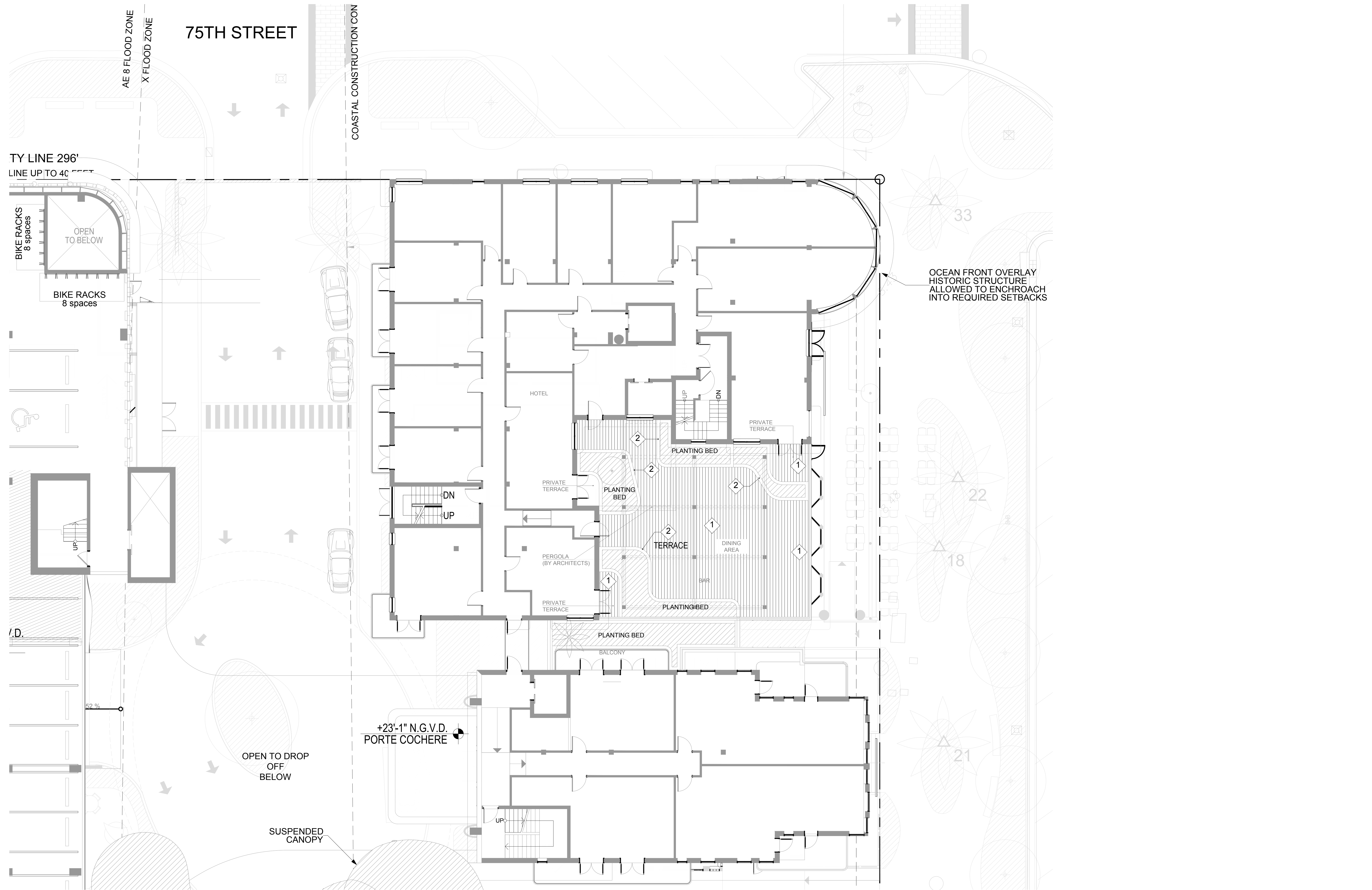
FOR THE FIRM: ENEA GARDEN DESIGN
GERARDO JAVIER DELGADO
P.L.A. 0001574

All landscaping designs, plans, concepts, drawings and renderings (hereinafter "Enea's Design") are original and created by Enea Garden Design, Inc. ("Enea") and are the exclusive property of Enea Garden Design, Inc. and protected by Copyright Law. The site, reproduction, or copying of any of Enea's Designs without express written authorization from Enea Garden Design Inc. is strictly prohibited.

Date
11/10/2017
Scale
1/8"=1'-0"
Sheet Name

**LEVEL 2
HARDSCAPE PLAN**

L2-200



HARDSCAPE MATERIAL SCHEDULE				
SYM	MATERIAL	DESCRIPTION	LOCATION	NOTES
1	WOOD DECK	MATERIAL: IPE WOOD SIZE: TBD COLOR: NATURAL	HOTEL TERRACE	
2	STUCCO WALL	MATERIAL: STUCCOFINISH: TBD COLOR: MATCH ARCHITECTURE	HOTEL TERRACE	TO BE COORDINATED

0" 4" 8" 16"
SCALE: 1/8"=1'-0"

These Design and Drawings are the Copyrighted Property of Revuelta Architecture International, P.A. and may not be reproduced, stored in a retrieval system, or transmitted in any form or by any means, electronic, mechanical, photocopying, recording, or by any information storage and retrieval system, without the prior written permission of Revuelta Architecture International, P.A. File: BIM Server\RAI_Sheet_2 - BIM Server\10116 OCEAN TERRACE\RAI_OCEAN TERRACE.dwg, Date: 11/20/17

SEAL:

FOR THE FIRM: ENEA GARDEN DESIGN
GERARDO JAVIER DELGADO
P.L.A. 0001574

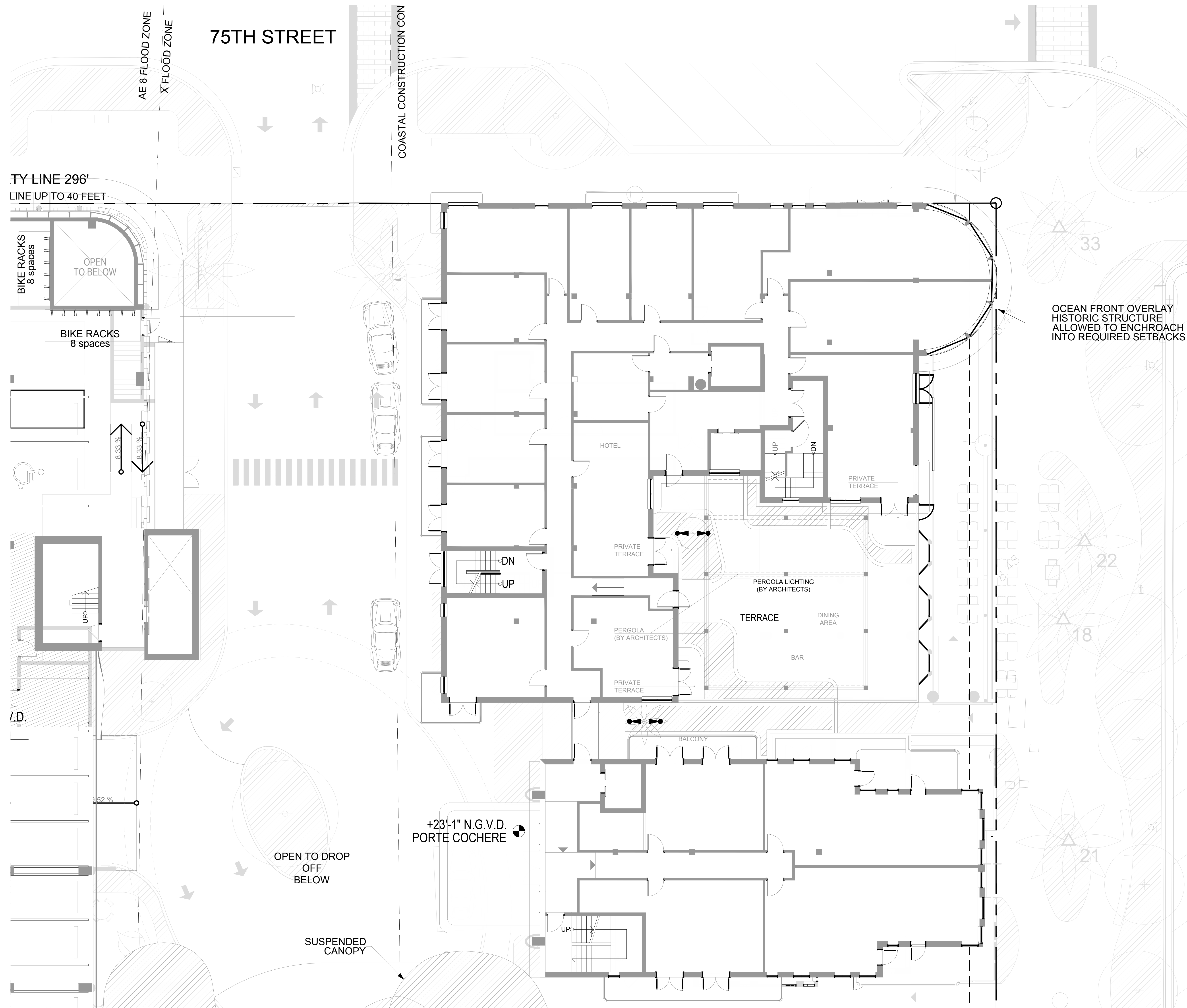
All landscaping designs, plans, concepts, drawings and renderings (hereinafter "Enea's Designs") are original and created by Enea Garden Design, Inc. ("Enea") and are the exclusive property of Enea Garden Design, Inc. and protected by Copyright Law. The sale, reproduction, or copying of any of Enea's Designs without express written authorization from Enea Garden Design Inc. is strictly prohibited.

Date
11/10/2017
Scale
1/8"=1'-0"
Sheet Name

**LEVEL 2
LIGHTING PLAN**

L2-700

- GENERAL NOTES:
1. THE OWNER'S ELECTRICAL ENGINEER WILL BE RESPONSIBLE FOR THE DESIGN, SPECIFICATION AND DOCUMENTATION OF ALL LINE VOLTAGE, SWITCHING, WIRING, AS WELL AS TRANSFORMERS, GFI AND JUNCTION BOXES FOR ELECTRICAL CONNECTIONS, AND TO ENSURE COMPLIANCE WITH ALL LOCAL CODES. FINAL ENGINEERING DRAWINGS FOR THE LANDSCAPE LIGHTING ARE TO BE REVIEWED AND APPROVED BY THE LANDSCAPE ARCHITECT FOR CONFORMANCE WITH DESIGN INTENT.
 2. LANDSCAPE LIGHTING IS INTENDED FOR AESTHETIC ILLUMINATION OF PLANT MATERIAL AND SHALL NOT BE USED AS SECURITY LIGHTING IF NOT CONNECTED TO A LIGHTING CONTROL SYSTEM. THEN ALL LIGHTING FIXTURES ARE TO BE CONNECTED INDEPENDENTLY TO A MAIN TIMER OR LIGHTING CONTACTOR WITH A PHOTOCCELL.
 3. GENERAL CONTRACTOR IS RESPONSIBLE TO COORDINATE THE ELECTRICAL INSTALLATION WITH THE PROPOSED GARDEN DESIGN. ALL ELECTRICAL CONDUITS THAT FALL WITHIN PLANTERS OR LANDSCAPE AREAS SHALL BE INSTALLED AT THE PERIMETERS OF THESE AREAS TO ALLOW FOR THE SPECIFIED PLANTINGS.
 4. CONDUIT INSTALLATION SHALL ONLY COMMENCE AFTER THE INSTALLATION OF ALL LARGE TREES AND PALMS.
 5. ALL GFI AND JUNCTION BOXES, TRANSFORMERS, CONDUITS / WIRING, AND ELECTRICAL SUPPLY SHALL BE BY THE GENERAL CONTRACTOR. JUNCTION BOXES SHALL NOT FALL WITHIN SODDED AREAS. JUNCTION BOXES THAT FALL WITHIN LANDSCAPE AREAS ARE TO BE BELOW GRADE DIRECT BURIAL TYPE AS PER CODE. ABOVE GROUND OR VISIBLE JUNCTION BOXES SHALL NOT BE ALLOWED UNLESS MOUNTED ON A WALL OR PAINTED BLACK WHEN IN LANDSCAPE BEDS.
 6. ALL FIXTURES INSTALLED SHALL BE AS SPECIFIED. NO FIXTURE SUBSTITUTION SHALL BE MADE WITHOUT THE PRIOR CONSENT OF THE LANDSCAPE ARCHITECT.
 7. CROSS REFERENCE WITH ELECTRICAL PLANS.



LIGHTING SCHEDULE

SYM	QTY	FIXTURE TYPE AND MANUFACTURER	VOLTAGE	MODEL #	MOUNTING TYPE AND HEIGHT	FINISH	NOTES
☛	4	UPLIGHT; GARDEN LIGHT LED	17 VOLTS	V3 VISIONARY SERIES	SPOT LIGHT	STAINLESS ALUMINUM	OR APPROVED EQUAL.

0" 4" 8" 16"
SCALE: 1/8"=1'-0"

These Design and Drawings Are The Copyrighted Property Of Revuelta Architecture International, P.A. and May Not Be Reproduced, Except With Specific Written Consent of the Architect.
 File: BIM Server\RAL Server 2 - BIM Server\10110 OCEAN TERRACE\LEVEL 2 OCEAN TERRACE.rvt (Date: 1/29/2017)
 By: @bcham...

OCEAN TERRACE
7400 Ocean Terrace
Miami Beach, FL 33141

A mixed used project by
Ocean Terrace Holdings
1035 North Miami Av.
Miami, FL 33136
305.324.4700

enea
garden design
Enea Garden Design Inc.
7200 NE 4th Court, Suite 105
Miami, Florida 33138, USA
T+1 305.576.6702 | F+1 305.576.6703
www.enea.ch | info.miami@enea.ch
REG No: LC28000339

SEAL:

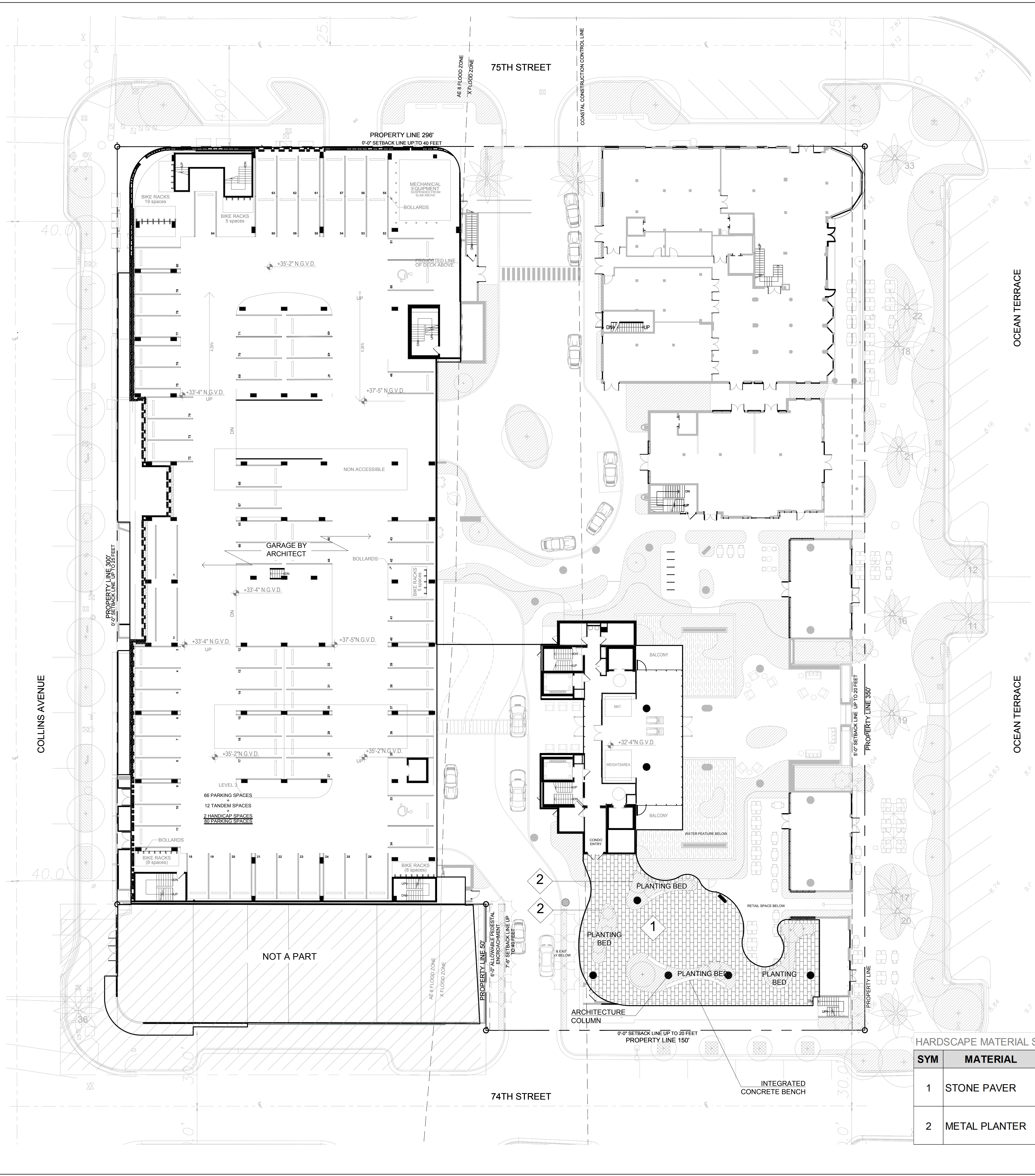
FOR THE FIRM: ENEA GARDEN DESIGN
GERARDO JAVIER DELGADO
R.L.A. 0001574

All landscaping designs, plans, concepts, drawings and renderings (hereinafter "Enea's Designs") are original and created by Enea Garden Design, Inc. ("Enea") and are the exclusive property of Enea Garden Design, Inc. and protected by Copyright law. The sale, reproduction or copying of any of Enea's Designs without express written authorization from Enea Garden Design Inc. is strictly prohibited.

Date
11/10/2017
Scale
1/16"=1'-0"
Sheet Name

**LEVEL 3
HARDSCAPE PLAN**

L3-200



HARDSCAPE MATERIAL SCHEDULE

SYM	MATERIAL	DESCRIPTION	LOCATION	NOTES
1	STONE PAVER	MATERIAL: STONE PATTERN: RUNNING BOND SIZE: 20"X12" FINISH: LT. SANDBLAST COLOR: GREY	HARDSCAPE	
2	METAL PLANTER	MATERIAL: STAINLESS STEEL SIZE: 24" HT FINISH: (2K) SATIN FINISH COLOR:	RAISED PLANTER WALLS	

0' 8' 16' 32'
SCALE: 1/16"=1'-0"

These Design And Drawings Are The Copyrighted Property Of Revuelta Architecture International, P.A. and May Not Be Reproduced, Except With Specific Written Consent of the Architect.
 File: BIM Server: RAL Server 2 - BIM Server 1/16"=1' OCEAN TERRACE L3-200.dwg, Date: 1/28/2017
 By: dbarbosa

OCEAN TERRACE
7400 Ocean Terrace
Miami Beach, FL 33141

A mixed used project by
Ocean Terrace Holdings
1035 North Miami Av.
Miami, FL 33136
305.324.4700

enea
garden design
Enea Garden Design Inc.
7260 NE 4th Court, Suite 105
Miami, Florida 33138, USA
T+1 305.576.6702 | F+1 305.576.6703
www.enea.ch | info.miami@enea.ch
REG No. LC26000339

SEAL:

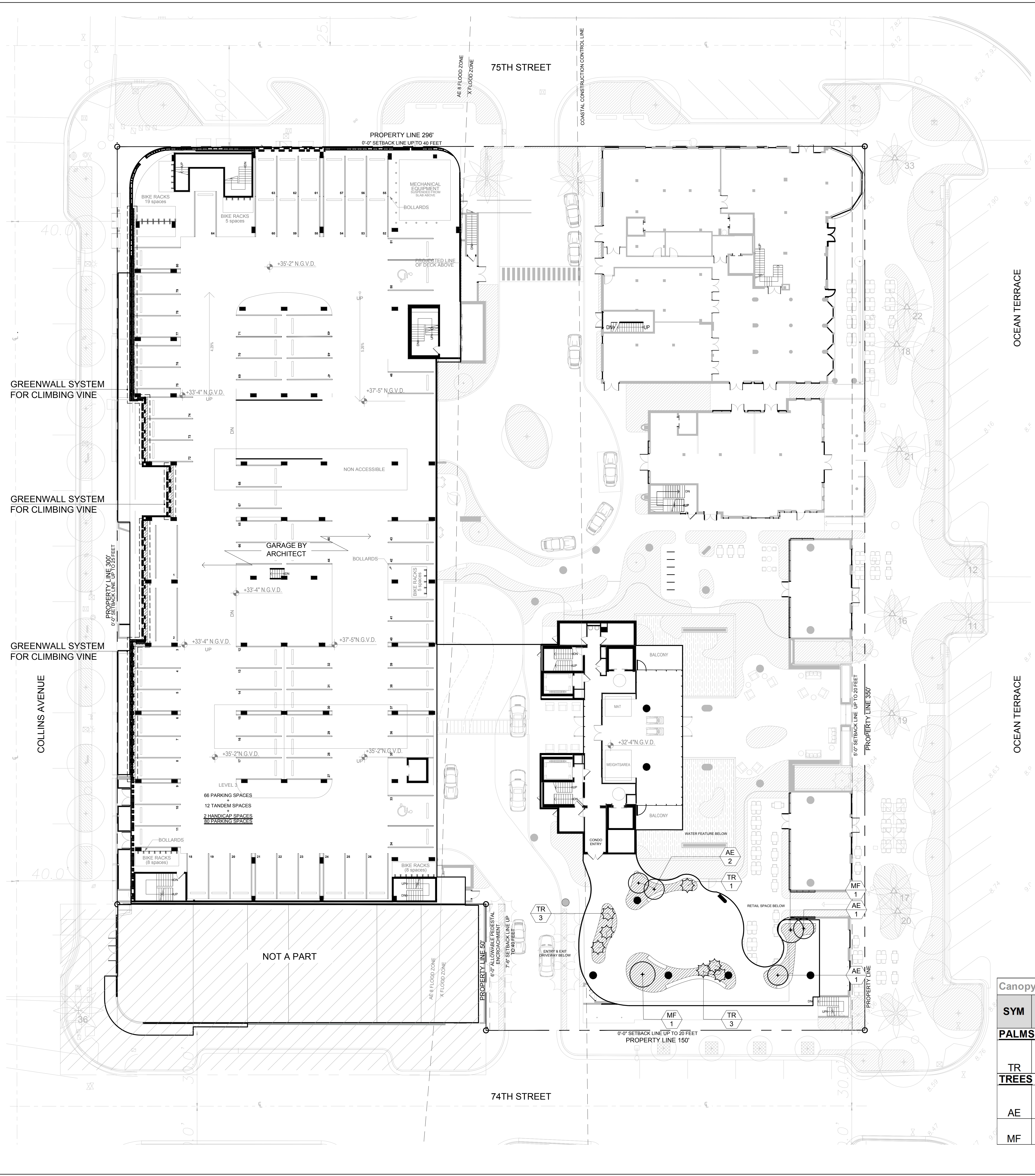
FOR THE FIRM: ENEA GARDEN DESIGN
GERARDO JAVIER DELGADO
R.L.A. 0001574

All landscaping designs, plans, concepts, drawings and renderings (hereinafter "Enea's Designs") are original and created by Enea Garden Design, Inc. ("Enea") and are the exclusive property of Enea Garden Design, Inc. and protected by Copyright law. The site, reproduction or copying of any of Enea's Designs without express written authorization from Enea Garden Design Inc. is strictly prohibited.

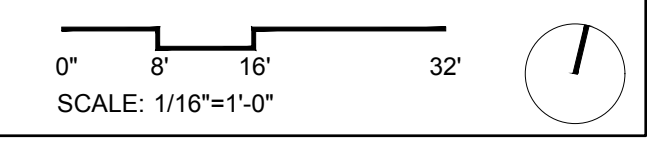
Date
11/10/2017
Scale
1/16"=1'-0"
Sheet Name

**LEVEL 3
CANOPY PLAN**

L3-500



Canopy Plant Schedule					
SYM	QTY	SCIENTIFIC NAME	COMMON NAME	MINIMUM SPECIFICATIONS	NATIVE
PALMS					
TR	7	<i>Thrinax radiata</i>	Thatch Palm	8'-12' OA	Yes
TREES					
AE	4	<i>Ardisia escallonioides</i>	Marlberry Simpson	6' HT	Yes
MF	2	<i>Myrcianthes fragrans</i>	Stopper	8' HT	Yes



These Design and Drawings Are The Copyrighted Property Of Revuelta Architecture International, P.A. and May Not Be Reproduced, Except With Specific Written Consent of the Architect.
 File: BIM Server - PAL_Sheet 2 - BIM Server 11/16/17 OCEAN TERRACE L3-500.dwg | Date: 11/20/17 | By: @bchamun | Title: L3-500

OCEAN TERRACE
7400 Ocean Terrace
Miami Beach, FL 33141

A mixed used project by
Ocean Terrace Holdings
1035 North Miami Av.
Miami, FL 33136
305.324.4700

enea
garden design
Enea Garden Design Inc.
7200 NE 4th Court, Suite 105
Miami, Florida 33138, USA
T+1 305.576.6702 | F+1 305.576.6703
www.enea.ch | info.miami@enea.ch
REG No: LC26000339

SEAL:

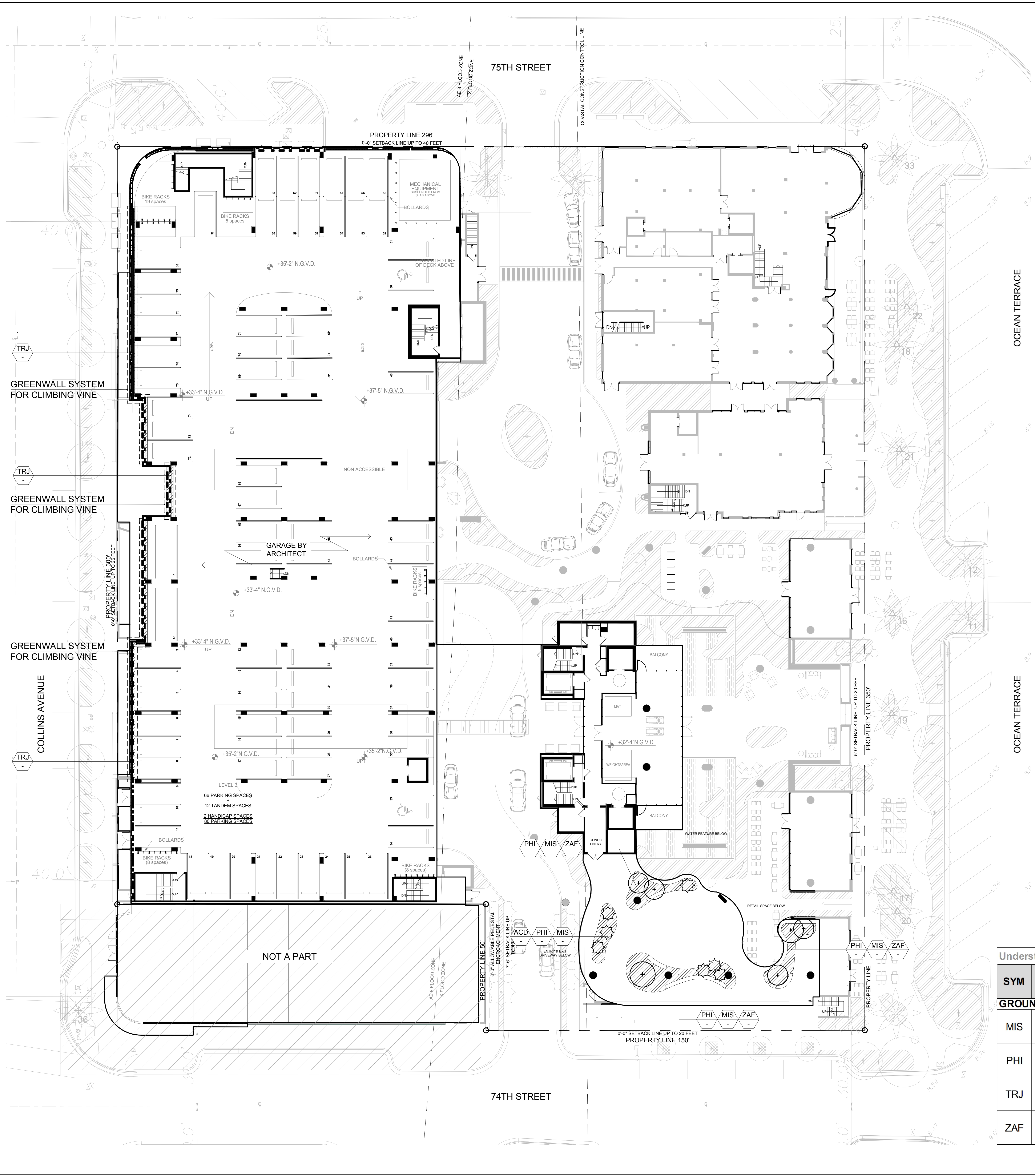
FOR THE FIRM: ENEA GARDEN DESIGN
GERARDO JAVIER DELGADO
P.L.A. 0001574

All landscaping designs, plans, concepts, drawings and renderings (hereinafter "Enea's Designs") are original and created by Enea Garden Design, Inc. ("Enea") and are the exclusive property of Enea Garden Design, Inc. and protected by Copyright Law. The sale, reproduction or copying of any of Enea's Designs without express written authorization from Enea Garden Design Inc. is strictly prohibited.

Date
11/10/2017
Scale
1/16"=1'-0"
Sheet Name

**LEVEL 3
UNDERSTORY
PLAN**

L3-501



Understory Plant Schedule						
SYM	QTY	SCIENTIFIC NAME	COMMON NAME	MINIMUM SPECIFICATIONS	NOTES	NATIVE
GROUND COVERS						
MIS		<i>Microsorium scolopendrium</i>	Wart Fern	3G; 18"-24" HT; 24" SP		No
PHI		<i>Philodendron spp.</i>	Philodendron Variety	3G		No
TRJ		<i>Trachelospermum jasminoides</i>	Confederate Jasmine	4" container	For greenwall see detail, L4-401	No
ZAF		<i>Zamia floridana</i>	Coontie	7G; 16" HT		Yes

0' 8' 16' 32'
SCALE: 1/16"=1'-0"

These Design And Drawings Are The Copyrighted Property Of Revuelta Architecture International, P.A. and May Not Be Reproduced, Except With Specific Written Consent of the Architect.
 File: BIM Server: RAL Server 2 - BIM Server 1 (11/10/2017) OCEAN TERRACE L3-501.dwg, Date: 11/20/2017
 By: @bchamara

