



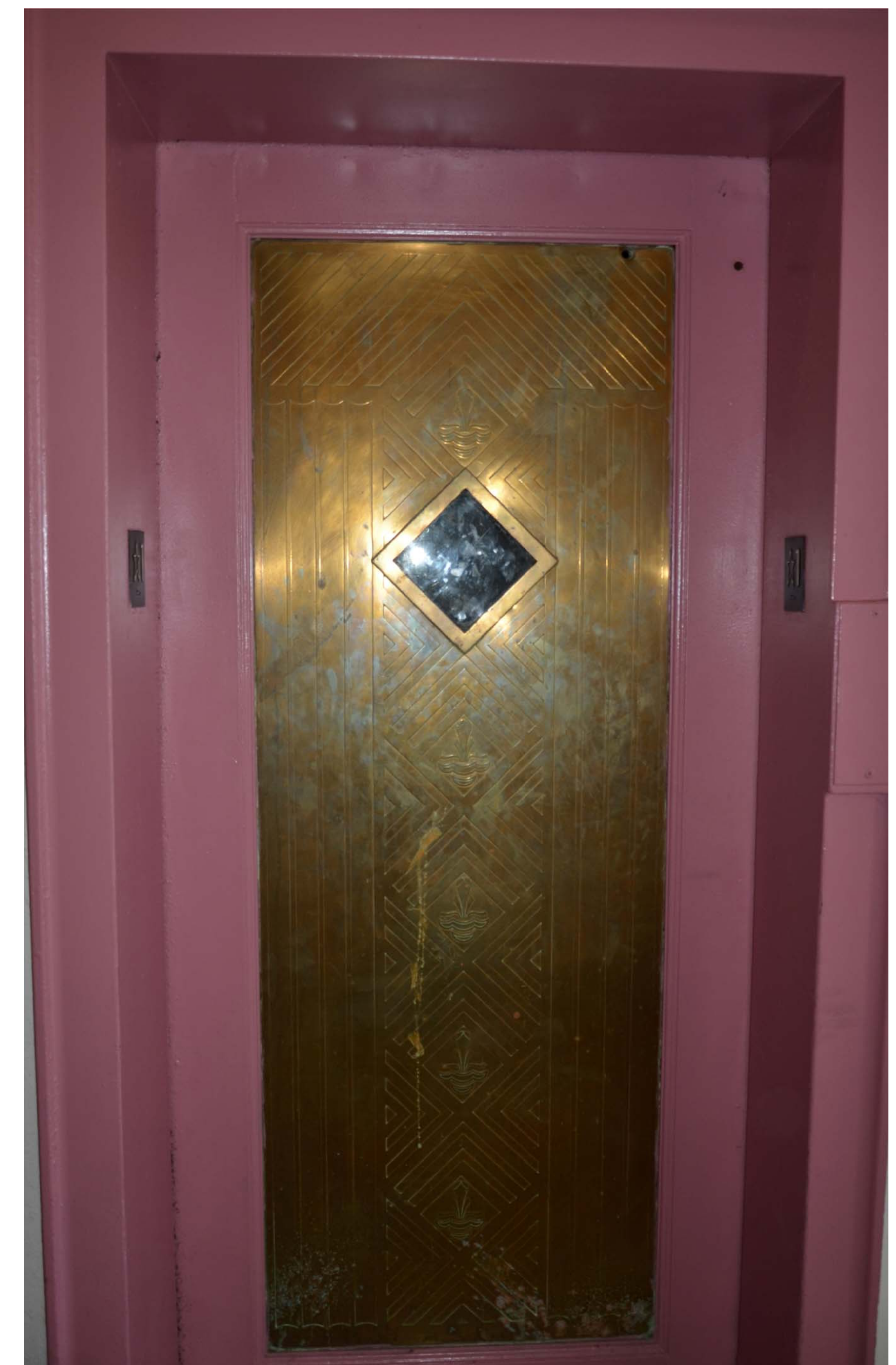
HISTORIC TERRAZZO AT LOBBY - KEYNOTE 6



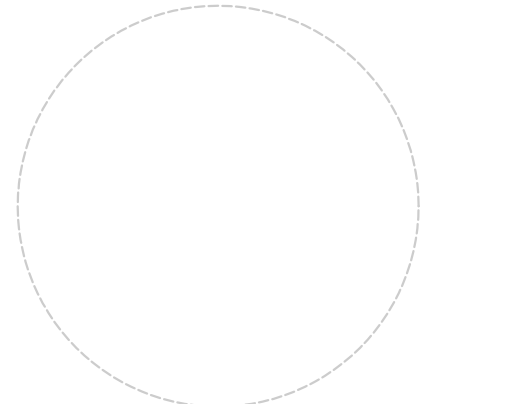
HISTORIC TERRAZZO AND
GLASS BLOCK AT LOBBY
KEYNOTES 3 AND 6



HISTORIC TERRAZZO AT ELEVATOR LOBBY - KEYNOTE 6



HISTORIC ELEVATOR DOOR - KEYNOTE 11



These Design And Drawings Are The Copyrighted Property Of Revuelta Architecture International P.A. and May Not Be Reproduced, Copied, or Distributed Without the Written Consent of the Architect. The Architect's Office is Located at 2199 Ponce de Leon Blvd., Suite 400, Coral Gables, FL 33134. The Architect's Office Phone Number is 305/446-7799. The Architect's Office Fax Number is 305/446-9275. The Architect's Office Email Address is rjheisenbottle@revuelta.com. The Architect's Office Website is www.revuelta.com. The Architect's Office Social Media Pages are Facebook: Revuelta Architecture International, LinkedIn: Revuelta Architecture International, and Instagram: revuelta_architecture.



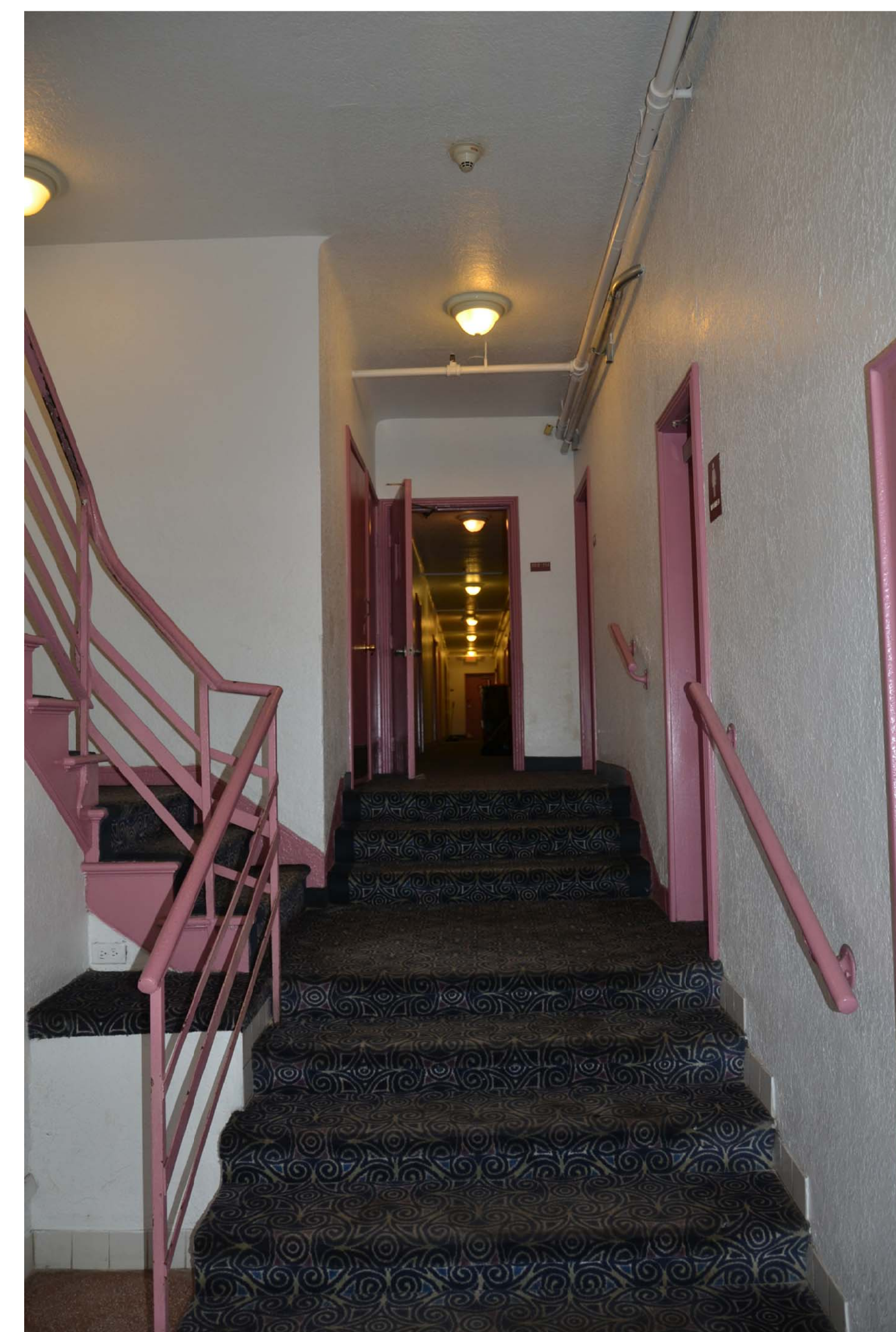
HISTORIC LOBBY LOOKING SOUTH AT GLASS BLOCK WINDOWS



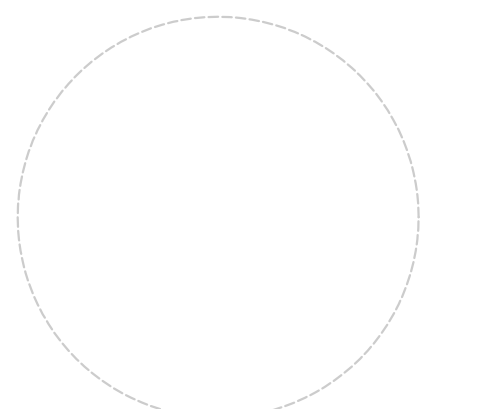
HISTORIC CEILING MOLDINGS AT LOBBY KEYNOTE 8



HISTORIC ROUND WINDOW FLANKED BY GLASS BLOCK LIGHTS



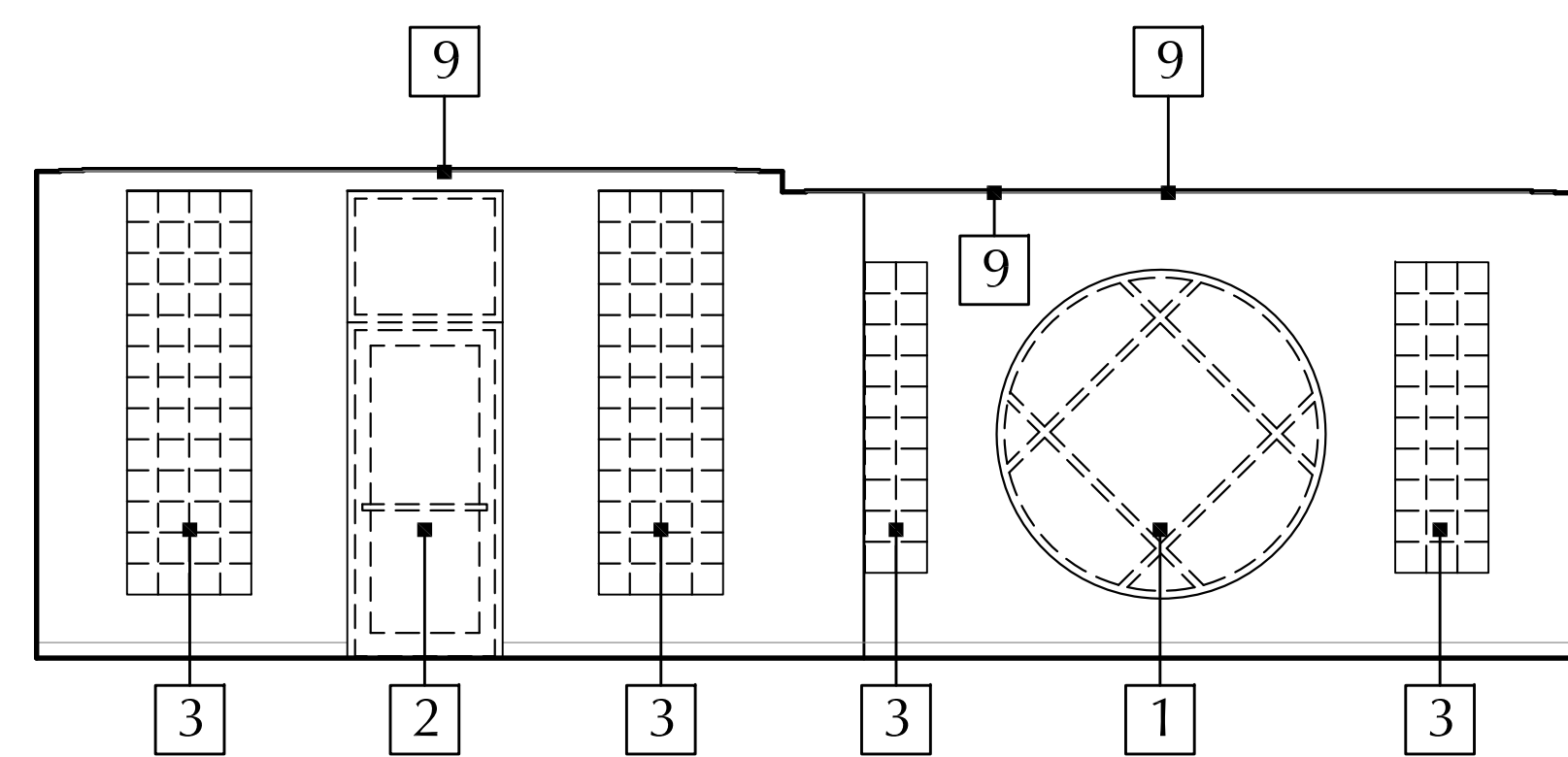
HISTORIC ELEVATOR DOOR - KEYNOTE 11



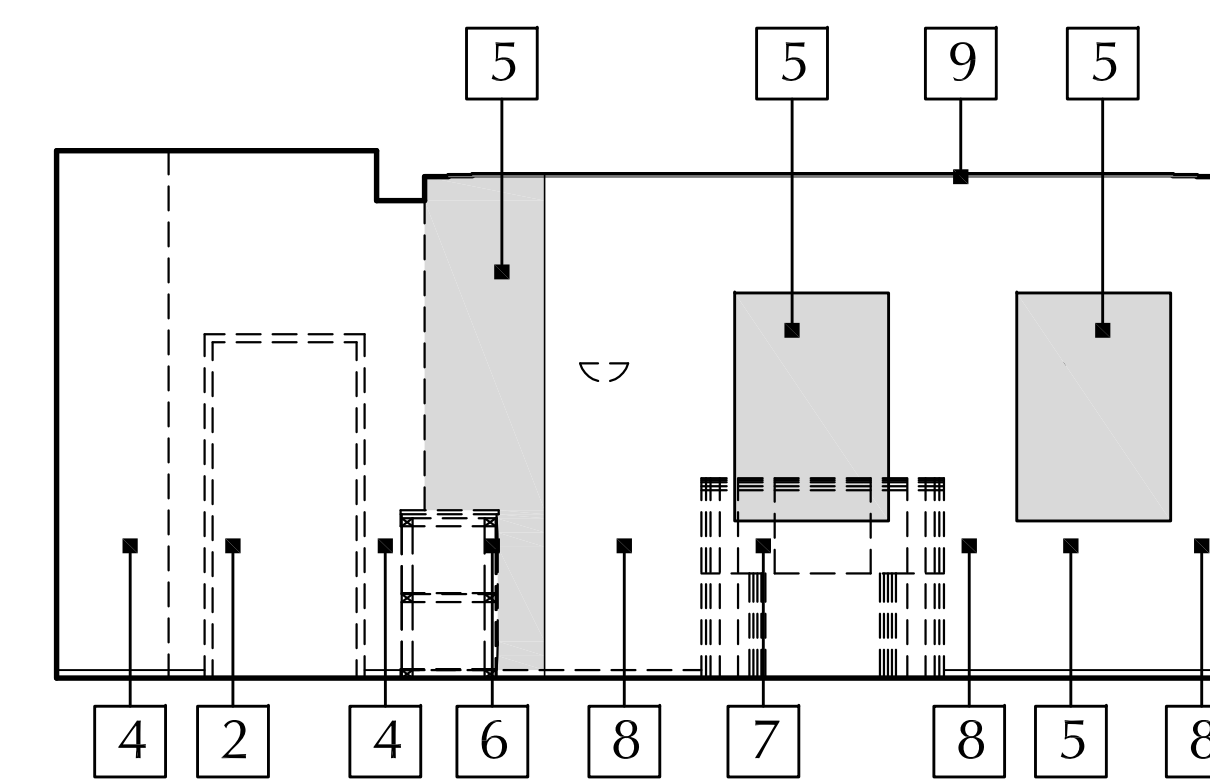
These Design And Drawings Are The Copyrighted Property Of Revuelta Architecture International, P.A., and May Not Be Reproduced, Copied, or Transmitted In Any Form or By Any Means, Without The Prior Written Consent of the Architect.

SELECTIVE DEMOLITION KEYNOTES

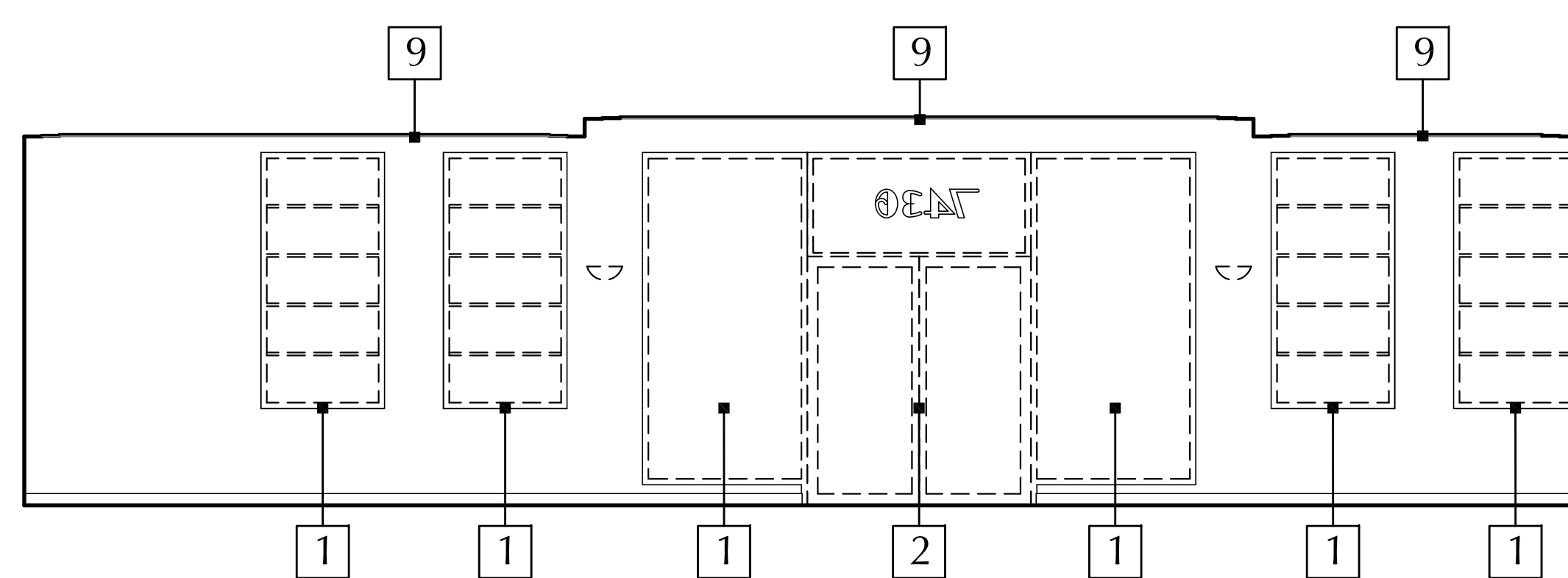
- 1 REMOVE EXISTING WINDOW AND WINDOW FRAME
- 2 REMOVE EXISTING DOOR AND DOOR FRAME
- 3 REMOVE EXISTING GLASS BLOCK
- 4 REMOVE EXISTING INTERIOR WALLS
- 5 REMOVE EXISTING EXTERIOR WALL
- 6 REMOVE EXISTING RECEPTION DESK
- 7 REMOVE EXISTING NON-HISTORICAL FIRE PLACE
- 8 EXISTING EXTERIOR WALL TO REMAIN
- 9 PROTECT AND REPAIR HISTORIC CEILING MOLDINGS



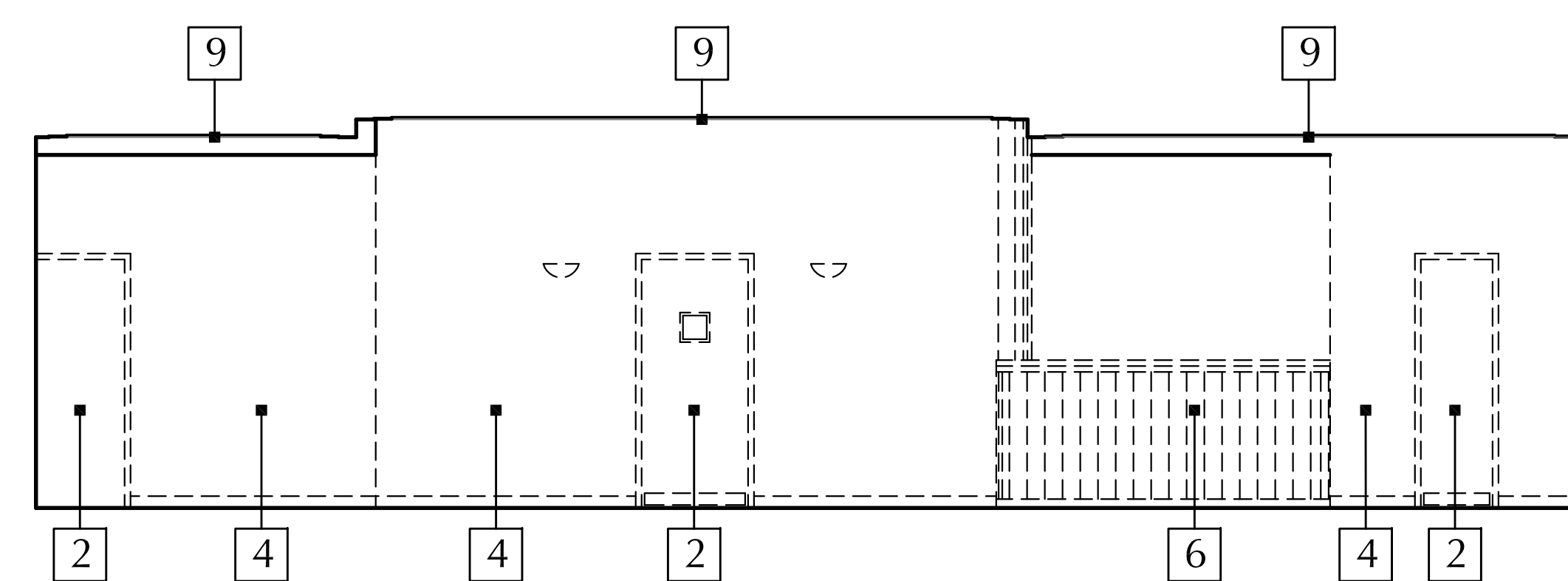
1 7436 OCEAN TERRACE SOUTH INTERIOR ELEVATION SCALE: 1/4" = 1' - 0"



2 7436 OCEAN TERRACE NORTH INTERIOR ELEVATION SCALE: 1/4" = 1' - 0"

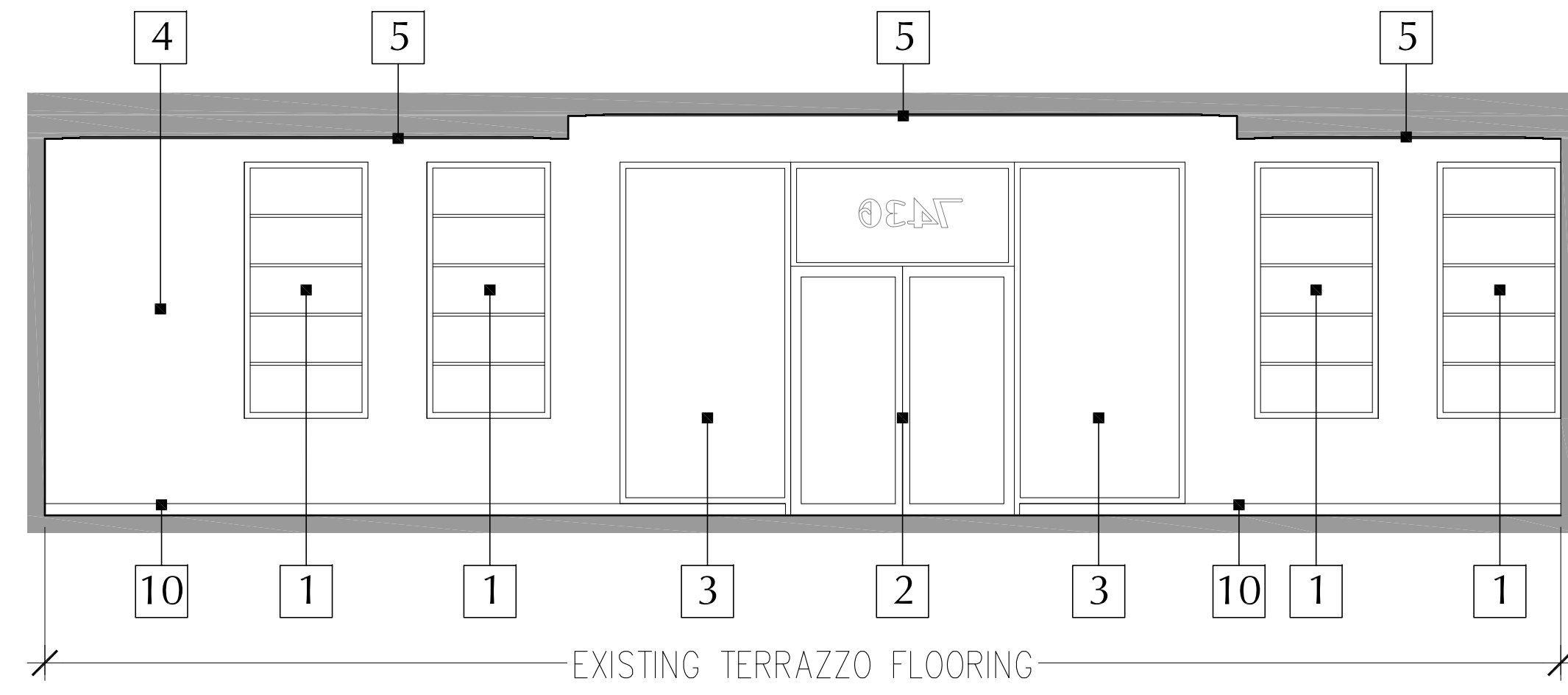


3 7436 OCEAN TERRACE EAST INTERIOR ELEVATION SCALE: 1/4" = 1' - 0"



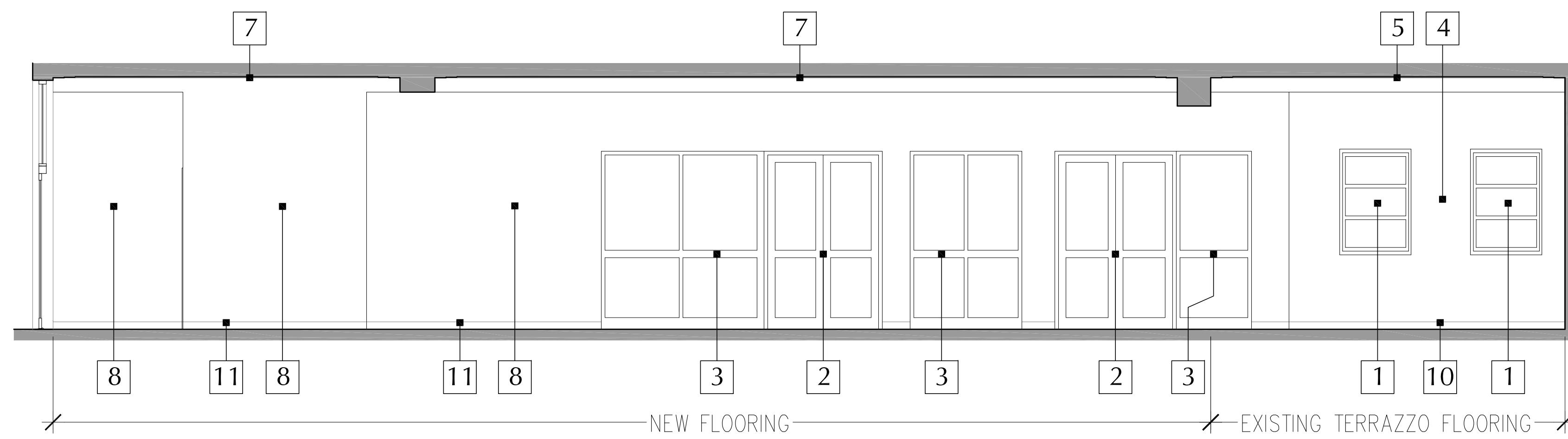
4 7436 OCEAN TERRACE WEST INTERIOR ELEVATION SCALE: 1/4" = 1' - 0"

These Design And Drawings Are The Copyrighted Property Of Revuelta Architecture International, P.A., and May Not Be Reproduced, Copied, or Transmitted in Any Form or by Any Means, Without the Prior Written Consent of the Architect. The Architect Assumes No Responsibility for the Construction of the Project or the Safety of the Project. The Architect's Office is Located at 2199 Ponce de Leon Blvd., Suite 400, Coral Gables, FL 33134. Telephone: 305/446-7799. Fax: 305/446-9275. Email: rjheisenbottle@revuelta.com



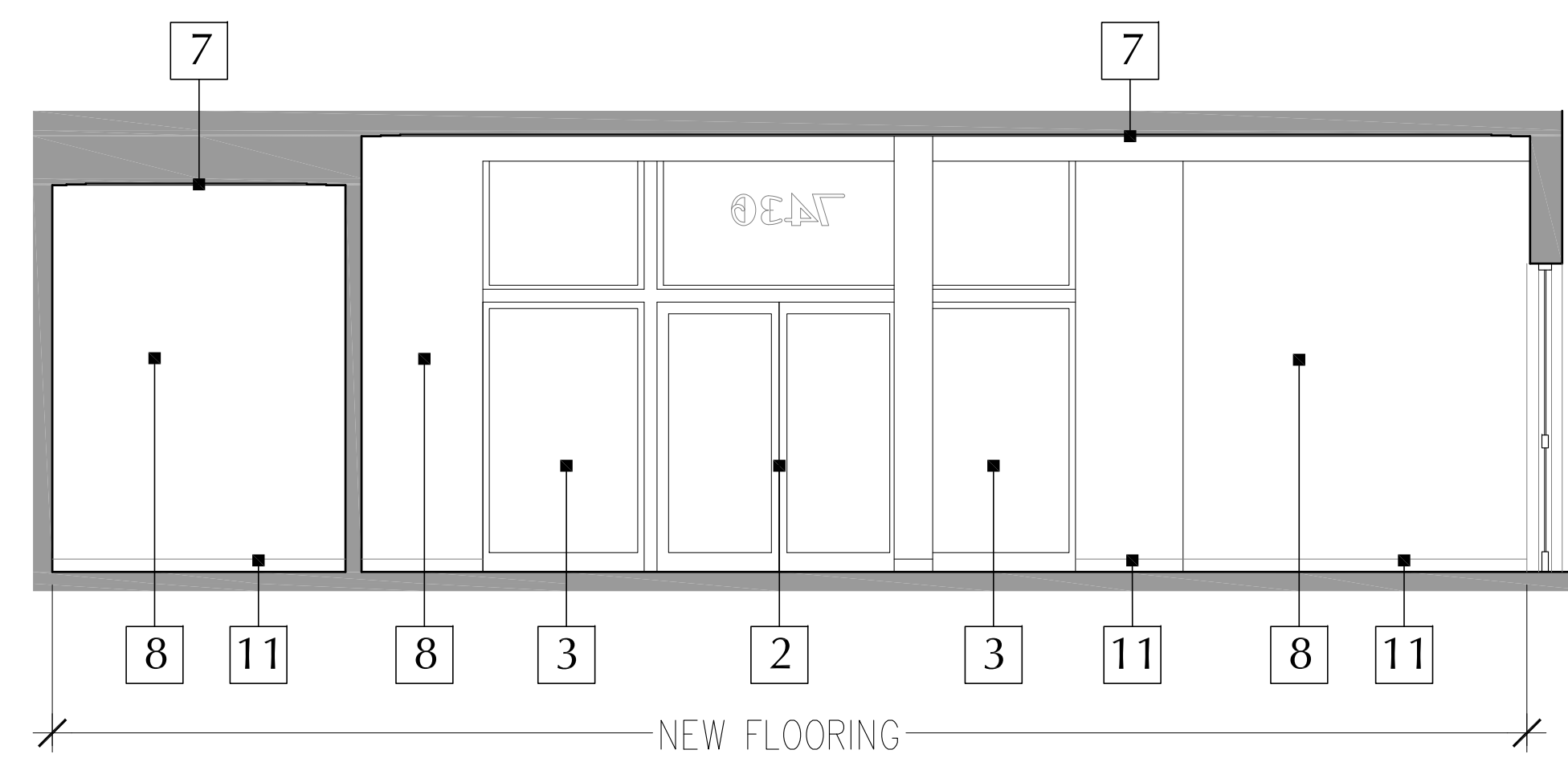
1 7436 OCEAN TERRACE INTERIOR PROPOSED EAST ELEVATION

SCALE: 1/4" = 1' - 0"



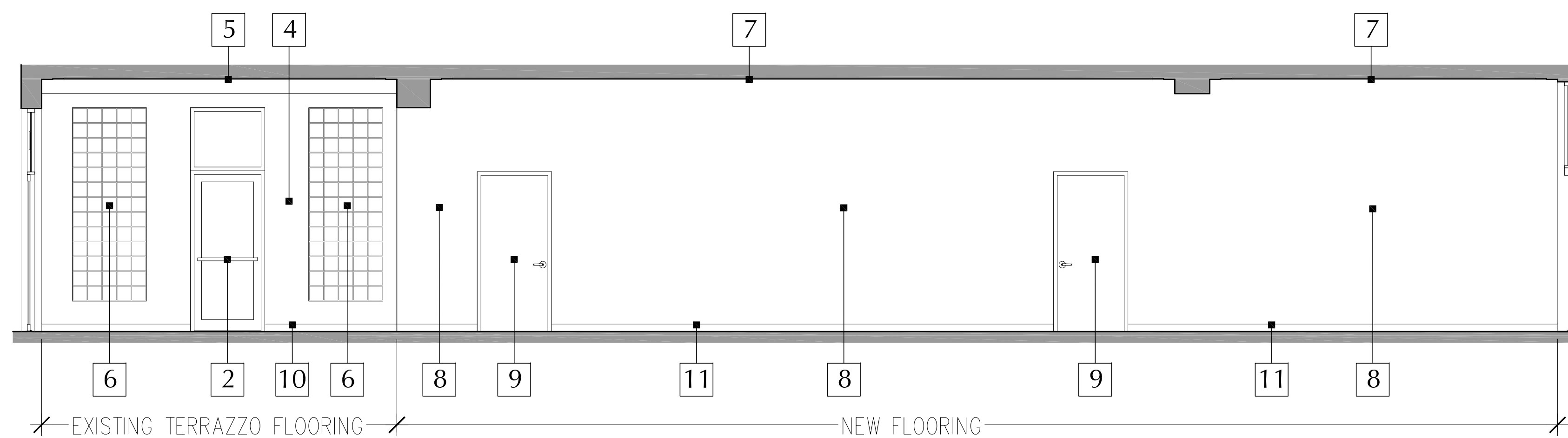
2 7436 OCEAN TERRACE INTERIOR PROPOSED NORTH ELEVATION

SCALE: 1/4" = 1' - 0"



3 7436 OCEAN TERRACE INTERIOR PROPOSED WEST ELEVATION

SCALE: 1/4" = 1' - 0"



4 7436 OCEAN TERRACE INTERIOR PROPOSED SOUTH ELEVATION

SCALE: 1/4" = 1' - 0"

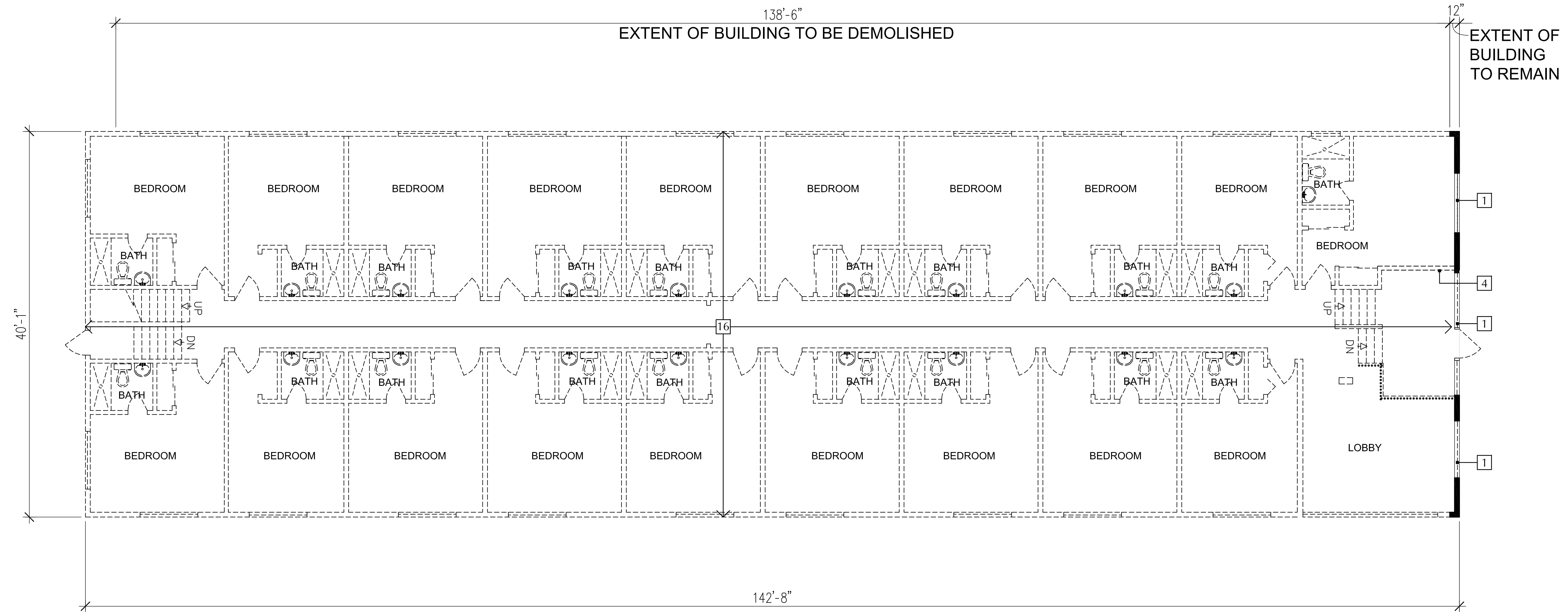
PROPOSED INTERIOR ELEVATION KEYNOTES

- 1 NEW IMPACT RESISTANT FIXED WINDOWS WITH CLEAR GLASS AND ANODIZED ALUMINUM FRAMING
- 2 NEW IMPACT RESISTANT STOREFRONT DOORS WITH CLEAR GLASS AND ANODIZED ALUMINUM FRAMING
- 3 NEW IMPACT RESISTANT STOREFRONT WITH CLEAR GLASS AND ANODIZED ALUMINUM FRAMING
- 4 REPAIR AND RE-PAINT EXISTING PLASTER FINISH
- 5 REPAIR AND REPAINT HISTORIC CEILING AND MOLDINGS
- 6 RESTORE OR RE-CONSTRUCT HISTORICAL GLASS BLOCK
- 7 NEW COFFERED CEILING TO MATCH HISTORICAL CONFIGURATION
- 8 NEW WALL FINISH
- 9 NEW SOLID DOOR
- 10 REPAIR AND RE-PAINT EXISTING WOOD WALL BASE
- 11 NEW WOOD WALL BASE TO MATCH HISTORICAL PROFILE

These Design And Drawings Are The Copyrighted Property Of Revuelta Architecture International P.A. and May Not Be Reproduced, Copied, or Distributed Without the Written Consent of the Architect.

SELECTIVE DEMOLITION KEYNOTES

- | | |
|--|---|
| 1 REMOVE EXISTING WINDOW AND WINDOW FRAME | 18 REMOVE EXISTING WALL FINISH |
| 2 REMOVE EXISTING DOOR AND DOOR FRAME | 19 REMOVE EXISTING METAL GATE |
| 3 REMOVE EXISTING GLASS BLOCK | 20 REMOVE EXISTING STOREFRONT |
| 4 REMOVE EXISTING INTERIOR WALLS | 21 REMOVE EXISTING NON-HISTORICAL RAMP |
| 5 REMOVE EXISTING EXTERIOR WALL | 22 REMOVE EXISTING METAL STAIR, SUPPORTS AND RAILINGS |
| 6 PROTECT AND REPAIR HISTORIC TERRAZZO FLOORING | 23 REMOVE EXISTING EXTERIOR MECHANICAL CHASE |
| 7 PROTECT AND REPAIR HISTORIC STAIR AND RAILINGS | 24 REMOVE EXISTING KNEE WALL |
| 8 PROTECT AND REPAIR HISTORIC CEILING MOLDINGS | 25 REMOVE EXISTING METAL FENCE |
| 9 REMOVE TRASH CHUTE | 26 REMOVE EXISTING NON-HISTORICAL ORNAMENTATION |
| 10 STORE AND PROTECT HISTORIC WINDOW FRAMES FOR RE-USE | 27 REMOVE EXISTING NON-HISTORICAL FIRE PLACE |
| 11 STORE AND PROTECT HISTORIC ELEVATOR DOOR FOR RE-USE | 28 REMOVE EXISTING ELEVATOR AND ASSOCIATED EQUIPMENT |
| 12 REMOVE EXISTING STAIR AND RAILINGS | 29 PROTECT AND REPAIR HISTORIC GUARD RAIL |
| 13 REMOVE ALL MECHANICAL AND ELECTRICAL EQUIPMENT | 30 REMOVE EXISTING BUILT-IN COUNTERS |
| 14 REMOVE ALL PLUMBING FIXTURES AND TOILET PARTITIONS | 31 REMOVE ALL ROOFING MATERIALS DOWN TO STRUCTURAL SLAB |
| 15 REMOVE EXISTING NON-HISTORICAL RAILING | 32 REMOVE NON-HISTORICAL DECORATIVE BLOCK AND RAILING |
| 16 DEMOLISH SECTION OF BUILDING IN ITS ENTIRETY AS SHOWN | 33 REMOVE EXISTING BALCONY AND GUARD RAIL |
| 17 REMOVE AND REBUILD EXISTING FLOOR SLAB ON AREA SHOWN | 34 EXISTING BALCONY AND GUARD RAIL TO REMAIN |
| | 35 REMOVE EXISTING FLOOR SLAB AS SHOWN |



7430 OCEAN TERRACE FIRST FLOOR PLAN - SELECTIVE DEMOLITION

SCALE: 3/16" = 1' - 0"

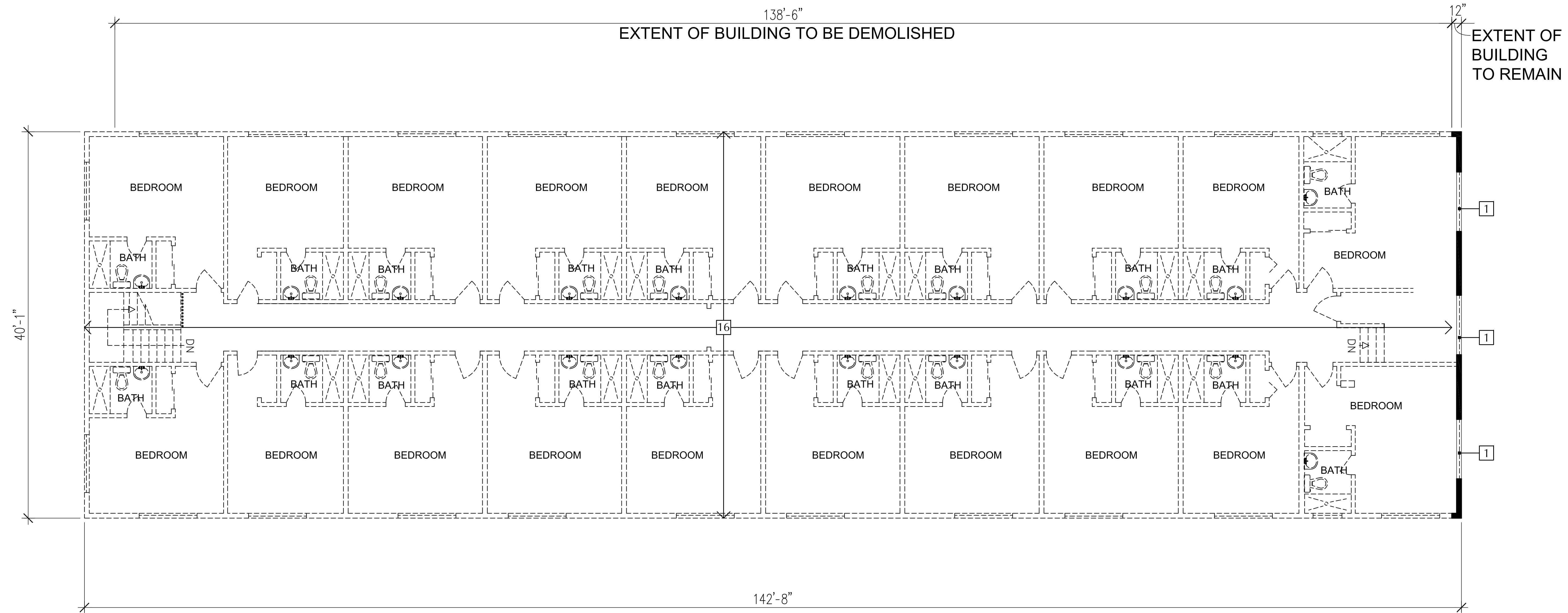
OCEAN TERRACE RESTORATION NOTES:

1- THE FRONT FACADE IS TO BE PRESERVED AND RESTORED. IF THE FACADE(S) ARE DETERMINED TO BE STRUCTURALLY INCAPABLE OF BEING PRESERVED, AN APPLICATION SHALL BE SUBMITTED TO THE HPB FOR THE REVIEW OF ADDITIONAL DEMOLITION AND RECONSTRUCTION. THE APPLICANT WILL THEN USE THE LASER SURVEY TO CONSTRUCT A REPLICA OF THE FRONT FACADE.

These Design And Drawings Are The Copyrighted Property Of Revuelta Architecture International P.A. and May Not Be Reproduced, Stored, Copied, or Distributed Without the Written Consent of the Architect. The Architect Assumes No Responsibility For Accuracy or Completeness of Information Provided by Others. The Architect Assumes No Responsibility For Accuracy or Completeness of Information Provided by Others. The Architect Assumes No Responsibility For Accuracy or Completeness of Information Provided by Others.

SELECTIVE DEMOLITION KEYNOTES

- | | |
|--|---|
| 1 REMOVE EXISTING WINDOW AND WINDOW FRAME | 18 REMOVE EXISTING WALL FINISH |
| 2 REMOVE EXISTING DOOR AND DOOR FRAME | 19 REMOVE EXISTING METAL GATE |
| 3 REMOVE EXISTING GLASS BLOCK | 20 REMOVE EXISTING STOREFRONT |
| 4 REMOVE EXISTING INTERIOR WALLS | 21 REMOVE EXISTING NON-HISTORICAL RAMP |
| 5 REMOVE EXISTING EXTERIOR WALL | 22 REMOVE EXISTING METAL STAIR, SUPPORTS AND RAILINGS |
| 6 PROTECT AND REPAIR HISTORIC TERRAZZO FLOORING | 23 REMOVE EXISTING EXTERIOR MECHANICAL CHASE |
| 7 PROTECT AND REPAIR HISTORIC STAIR AND RAILINGS | 24 REMOVE EXISTING KNEE WALL |
| 8 PROTECT AND REPAIR HISTORIC CEILING MOLDINGS | 25 REMOVE EXISTING METAL FENCE |
| 9 REMOVE TRASH CHUTE | 26 REMOVE EXISTING NON-HISTORICAL ORNAMENTATION |
| 10 STORE AND PROTECT HISTORIC WINDOW FRAMES FOR RE-USE | 27 REMOVE EXISTING NON-HISTORICAL FIRE PLACE |
| 11 STORE AND PROTECT HISTORIC ELEVATOR DOOR FOR RE-USE | 28 REMOVE EXISTING ELEVATOR AND ASSOCIATED EQUIPMENT |
| 12 REMOVE EXISTING STAIR AND RAILINGS | 29 PROTECT AND REPAIR HISTORIC GUARD RAIL |
| 13 REMOVE ALL MECHANICAL AND ELECTRICAL EQUIPMENT | 30 REMOVE EXISTING BUILT-IN COUNTERS |
| 14 REMOVE ALL PLUMBING FIXTURES AND TOILET PARTITIONS | 31 REMOVE ALL ROOFING MATERIALS DOWN TO STRUCTURAL SLAB |
| 15 REMOVE EXISTING NON-HISTORICAL RAILING | 32 REMOVE NON-HISTORICAL DECORATIVE BLOCK AND RAILING |
| 16 DEMOLISH SECTION OF BUILDING IN ITS ENTIRETY AS SHOWN | 33 REMOVE EXISTING BALCONY AND GUARD RAIL |
| 17 REMOVE AND REBUILD EXISTING FLOOR SLAB ON AREA SHOWN | 34 EXISTING BALCONY AND GUARD RAIL TO REMAIN |
| | 35 REMOVE EXISTING FLOOR SLAB AS SHOWN |



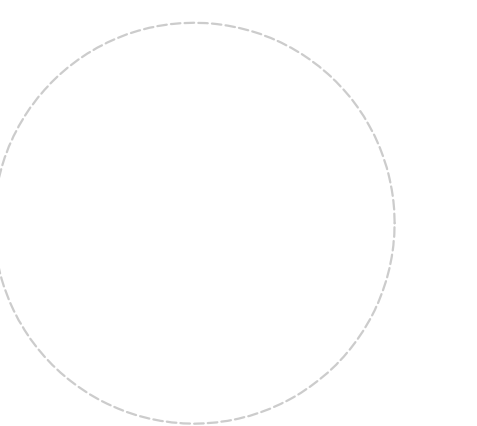
7430 OCEAN TERRACE SECOND FLOOR PLAN - SELECTIVE DEMOLITION

SCALE: 3/16" = 1' - 0"

OCEAN TERRACE RESTORATION NOTES:

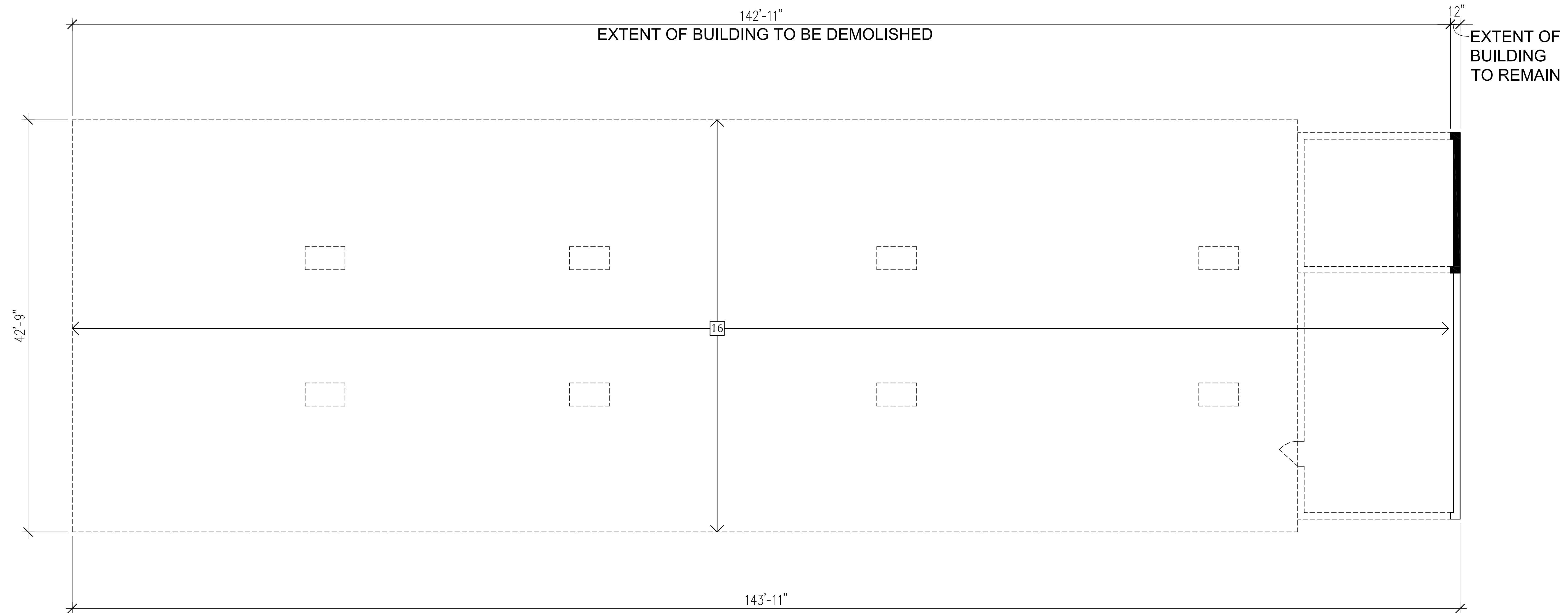
1- THE FRONT FACADE IS TO BE PRESERVED AND RESTORED. IF THE FACADE(S) ARE DETERMINED TO BE STRUCTURALLY INCAPABLE OF BEING PRESERVED, AN APPLICATION SHALL BE SUBMITTED TO THE HPB FOR THE REVIEW OF ADDITIONAL DEMOLITION AND RECONSTRUCTION. THE APPLICANT WILL THEN USE THE LASER SURVEY TO CONSTRUCT A REPLICA OF THE FRONT FACADE.

These Design And Drawings Are The Copyrighted Property Of Revuelta Architecture International P.A. and May Not Be Reproduced, Copied, or Transmitted in Any Form or by Any Means, Electronic or Mechanical, Without the Prior Written Consent of the Architect. The Architect Assumes No Responsibility for Any Damages or Injuries Resulting from the Use of These Drawings. The Architect's Responsibility is Limited to the Design and Construction of the Building as Shown on These Drawings. The Architect is Not Responsible for Any Other Matters, Including but Not Limited to, the Safety of the Building or the Safety of the Occupants of the Building.



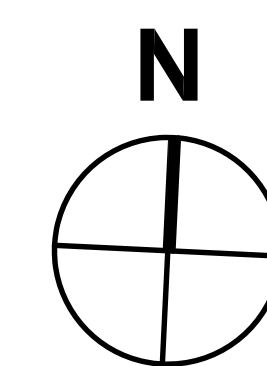
SELECTIVE DEMOLITION KEYNOTES

- | | |
|--|---|
| 1 REMOVE EXISTING WINDOW AND WINDOW FRAME | 18 REMOVE EXISTING WALL FINISH |
| 2 REMOVE EXISTING DOOR AND DOOR FRAME | 19 REMOVE EXISTING METAL GATE |
| 3 REMOVE EXISTING GLASS BLOCK | 20 REMOVE EXISTING STOREFRONT |
| 4 REMOVE EXISTING INTERIOR WALLS | 21 REMOVE EXISTING NON-HISTORICAL RAMP |
| 5 REMOVE EXISTING EXTERIOR WALL | 22 REMOVE EXISTING METAL STAIR, SUPPORTS AND RAILINGS |
| 6 PROTECT AND REPAIR HISTORIC TERRAZZO FLOORING | 23 REMOVE EXISTING EXTERIOR MECHANICAL CHASE |
| 7 PROTECT AND REPAIR HISTORIC STAIR AND RAILINGS | 24 REMOVE EXISTING KNEE WALL |
| 8 PROTECT AND REPAIR HISTORIC CEILING MOLDINGS | 25 REMOVE EXISTING METAL FENCE |
| 9 REMOVE TRASH CHUTE | 26 REMOVE EXISTING NON-HISTORICAL ORNAMENTATION |
| 10 STORE AND PROTECT HISTORIC WINDOW FRAMES FOR RE-USE | 27 REMOVE EXISTING NON-HISTORICAL FIRE PLACE |
| 11 STORE AND PROTECT HISTORIC ELEVATOR DOOR FOR RE-USE | 28 REMOVE EXISTING ELEVATOR AND ASSOCIATED EQUIPMENT |
| 12 REMOVE EXISTING STAIR AND RAILINGS | 29 PROTECT AND REPAIR HISTORIC GUARD RAIL |
| 13 REMOVE ALL MECHANICAL AND ELECTRICAL EQUIPMENT | 30 REMOVE EXISTING BUILT-IN COUNTERS |
| 14 REMOVE ALL PLUMBING FIXTURES AND TOILET PARTITIONS | 31 REMOVE ALL ROOFING MATERIALS DOWN TO STRUCTURAL SLAB |
| 15 REMOVE EXISTING NON-HISTORICAL RAILING | 32 REMOVE NON-HISTORICAL DECORATIVE BLOCK AND RAILING |
| 16 DEMOLISH SECTION OF BUILDING IN ITS ENTIRETY AS SHOWN | 33 REMOVE EXISTING BALCONY AND GUARD RAIL |
| 17 REMOVE AND REBUILD EXISTING FLOOR SLAB ON AREA SHOWN | 34 EXISTING BALCONY AND GUARD RAIL TO REMAIN |
| | 35 REMOVE EXISTING FLOOR SLAB AS SHOWN |



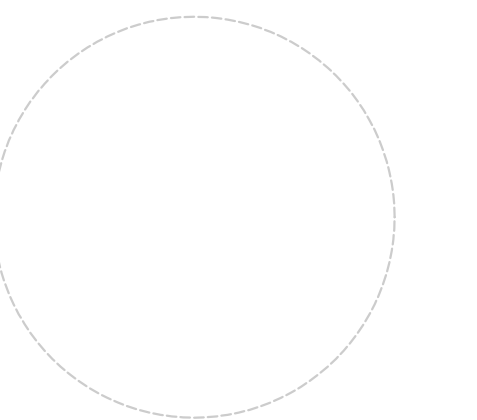
7430 OCEAN TERRACE ROOF PLAN - SELECTIVE DEMOLITION

SCALE: 3/16" = 1' - 0"



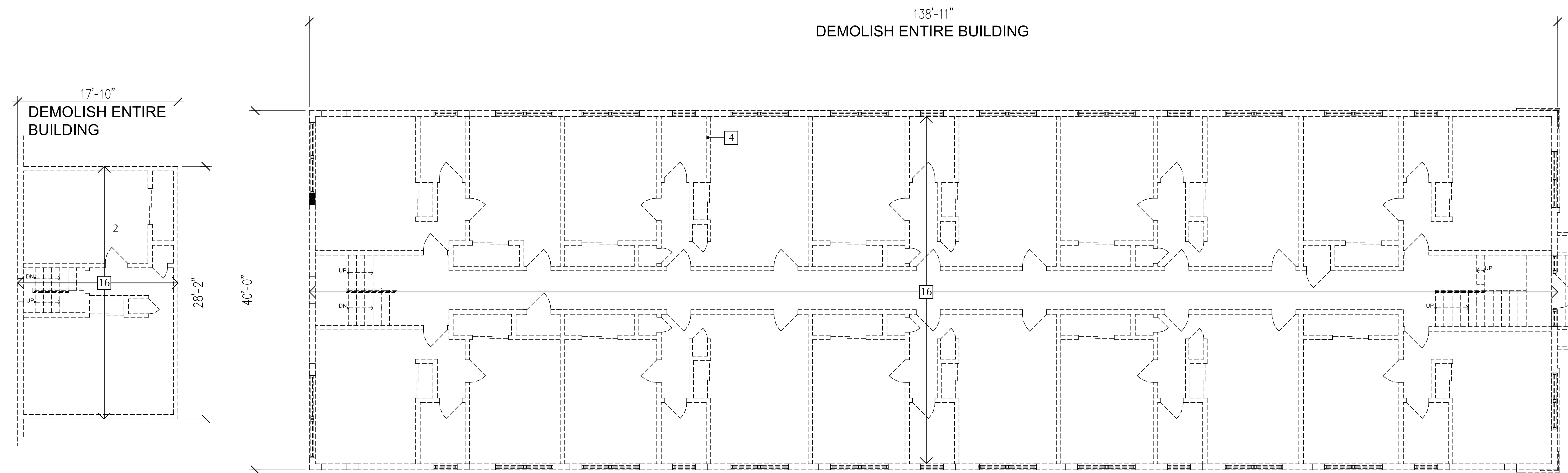
OCEAN TERRACE RESTORATION NOTES:

1- THE FRONT FACADE IS TO BE PRESERVED AND RESTORED. IF THE FACADE(S) ARE DETERMINED TO BE STRUCTURALLY INCAPABLE OF BEING PRESERVED, AN APPLICATION SHALL BE SUBMITTED TO THE HPB FOR THE REVIEW OF ADDITIONAL DEMOLITION AND RECONSTRUCTION. THE APPLICANT WILL THEN USE THE LASER SURVEY TO CONSTRUCT A REPLICA OF THE FRONT FACADE.



SELECTIVE DEMOLITION KEYNOTES

- | | |
|--|---|
| 1 REMOVE EXISTING WINDOW AND WINDOW FRAME | 18 REMOVE EXISTING WALL FINISH |
| 2 REMOVE EXISTING DOOR AND DOOR FRAME | 19 REMOVE EXISTING METAL GATE |
| 3 REMOVE EXISTING GLASS BLOCK | 20 REMOVE EXISTING STOREFRONT |
| 4 REMOVE EXISTING INTERIOR WALLS | 21 REMOVE EXISTING NON-HISTORICAL RAMP |
| 5 REMOVE EXISTING EXTERIOR WALL | 22 REMOVE EXISTING METAL STAIR, SUPPORTS AND RAILINGS |
| 6 PROTECT AND REPAIR HISTORIC TERRAZZO FLOORING | 23 REMOVE EXISTING EXTERIOR MECHANICAL CHASE |
| 7 PROTECT AND REPAIR HISTORIC STAIR AND RAILINGS | 24 REMOVE EXISTING KNEE WALL |
| 8 PROTECT AND REPAIR HISTORIC CEILING MOLDINGS | 25 REMOVE EXISTING METAL FENCE |
| 9 REMOVE TRASH CHUTE | 26 REMOVE EXISTING NON-HISTORICAL ORNAMENTATION |
| 10 STORE AND PROTECT HISTORIC WINDOW FRAMES FOR RE-USE | 27 REMOVE EXISTING NON-HISTORICAL FIRE PLACE |
| 11 STORE AND PROTECT HISTORIC ELEVATOR DOOR FOR RE-USE | 28 REMOVE EXISTING ELEVATOR AND ASSOCIATED EQUIPMENT |
| 12 REMOVE EXISTING STAIR AND RAILINGS | 29 PROTECT AND REPAIR HISTORIC GUARD RAIL |
| 13 REMOVE ALL MECHANICAL AND ELECTRICAL EQUIPMENT | 30 REMOVE EXISTING BUILT-IN COUNTERS |
| 14 REMOVE ALL PLUMBING FIXTURES AND TOILET PARTITIONS | 31 REMOVE ALL ROOFING MATERIALS DOWN TO STRUCTURAL SLAB |
| 15 REMOVE EXISTING NON-HISTORICAL RAILING | 32 REMOVE NON-HISTORICAL DECORATIVE BLOCK AND RAILING |
| 16 DEMOLISH SECTION OF BUILDING IN ITS ENTIRETY AS SHOWN | 33 REMOVE EXISTING BALCONY AND GUARD RAIL |
| 17 REMOVE AND REBUILD EXISTING FLOOR SLAB ON AREA SHOWN | 34 EXISTING BALCONY AND GUARD RAIL TO REMAIN |

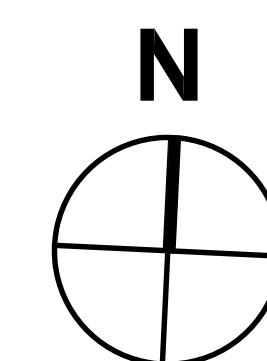


BASEMENT DEMO PLAN

FIRST FLOOR DEMO PLAN

7420 OCEAN TERRACE BASEMENT & FIRST FLOOR PLAN - DEMOLITION

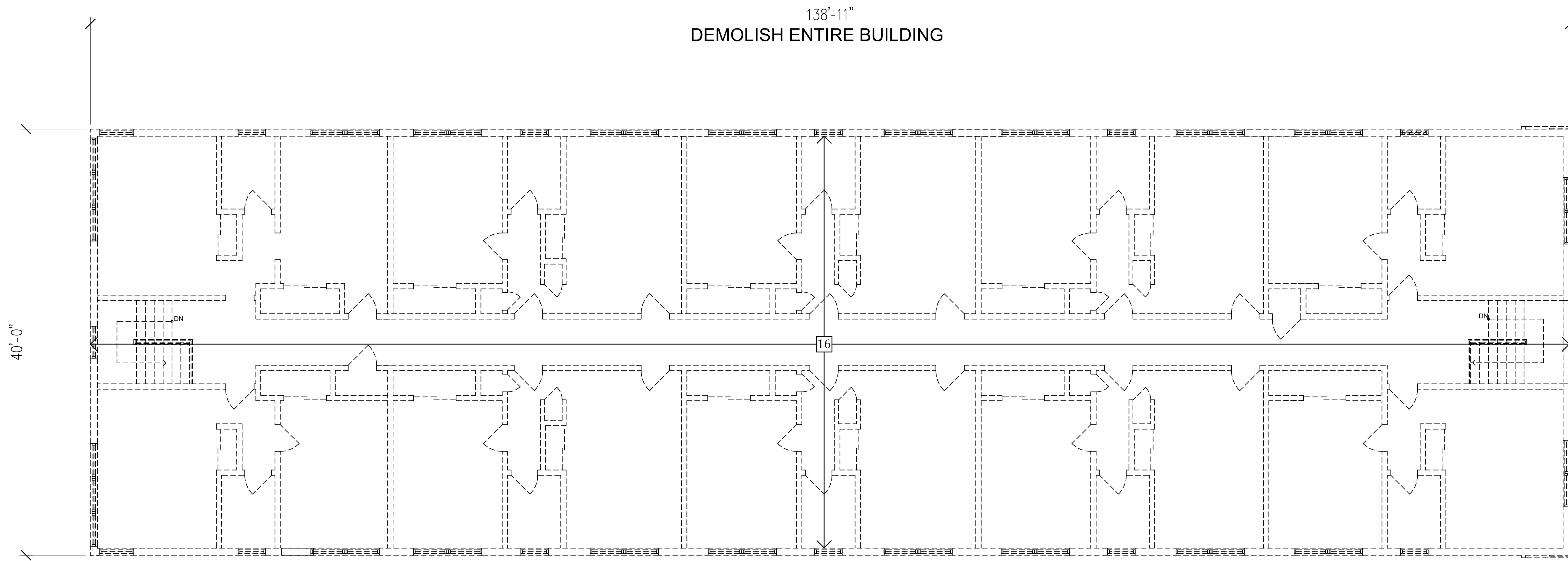
SCALE: 3/16" = 1' - 0"



These Design And Drawings Are The Copyrighted Property Of Revuelta Architecture International, P.A., and May Not Be Reproduced, Stored, Copied, or Distributed Without the Written Consent of the Architect. Revuelta Architecture International, P.A. is an Equal Opportunity Employer. All Rights Reserved.

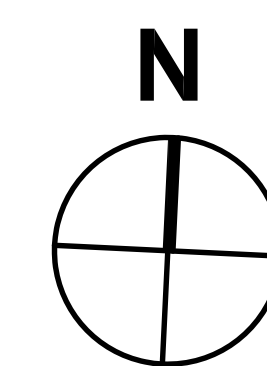
SELECTIVE DEMOLITION KEYNOTES

- | | |
|--|--|
| <ul style="list-style-type: none"> 1 REMOVE EXISTING WINDOW AND WINDOW FRAME 2 REMOVE EXISTING DOOR AND DOOR FRAME 3 REMOVE EXISTING GLASS BLOCK 4 REMOVE EXISTING INTERIOR WALLS 5 REMOVE EXISTING EXTERIOR WALL 6 PROTECT AND REPAIR HISTORIC TERRAZZO FLOORING 7 PROTECT AND REPAIR HISTORIC STAIR AND RAILINGS 8 PROTECT AND REPAIR HISTORIC CEILING MOLDINGS 9 REMOVE TRASH CHUTE 10 STORE AND PROTECT HISTORIC WINDOW FRAMES FOR RE-USE 11 STORE AND PROTECT HISTORIC ELEVATOR DOOR FOR RE-USE 12 REMOVE EXISTING STAIR AND RAILINGS 13 REMOVE ALL MECHANICAL AND ELECTRICAL EQUIPMENT 14 REMOVE ALL PLUMBING FIXTURES AND TOILET PARTITIONS 15 REMOVE EXISTING NON-HISTORICAL RAILING 16 DEMOLISH SECTION OF BUILDING IN ITS ENTIRETY AS SHOWN 17 REMOVE AND REBUILD EXISTING FLOOR SLAB ON AREA SHOWN | <ul style="list-style-type: none"> 18 REMOVE EXISTING WALL FINISH 19 REMOVE EXISTING METAL GATE 20 REMOVE EXISTING STOREFRONT 21 REMOVE EXISTING NON-HISTORICAL RAMP 22 REMOVE EXISTING METAL STAIR, SUPPORTS AND RAILINGS 23 REMOVE EXISTING EXTERIOR MECHANICAL CHASE 24 REMOVE EXISTING KNEE WALL 25 REMOVE EXISTING METAL FENCE 26 REMOVE EXISTING NON-HISTORICAL ORNAMENTATION 27 REMOVE EXISTING NON-HISTORICAL FIRE PLACE 28 REMOVE EXISTING ELEVATOR AND ASSOCIATED EQUIPMENT 29 PROTECT AND REPAIR HISTORIC GUARD RAIL 30 REMOVE EXISTING BUILT-IN COUNTERS 31 REMOVE ALL ROOFING MATERIALS DOWN TO STRUCTURAL SLAB 32 REMOVE NON-HISTORICAL DECORATIVE BLOCK AND RAILING 33 REMOVE EXISTING BALCONY AND GUARD RAIL 34 EXISTING BALCONY AND GUARD RAIL TO REMAIN 35 REMOVE EXISTING FLOOR SLAB AS SHOWN |
|--|--|



7420 OCEAN TERRACE SECOND FLOOR PLAN - DEMOLITION

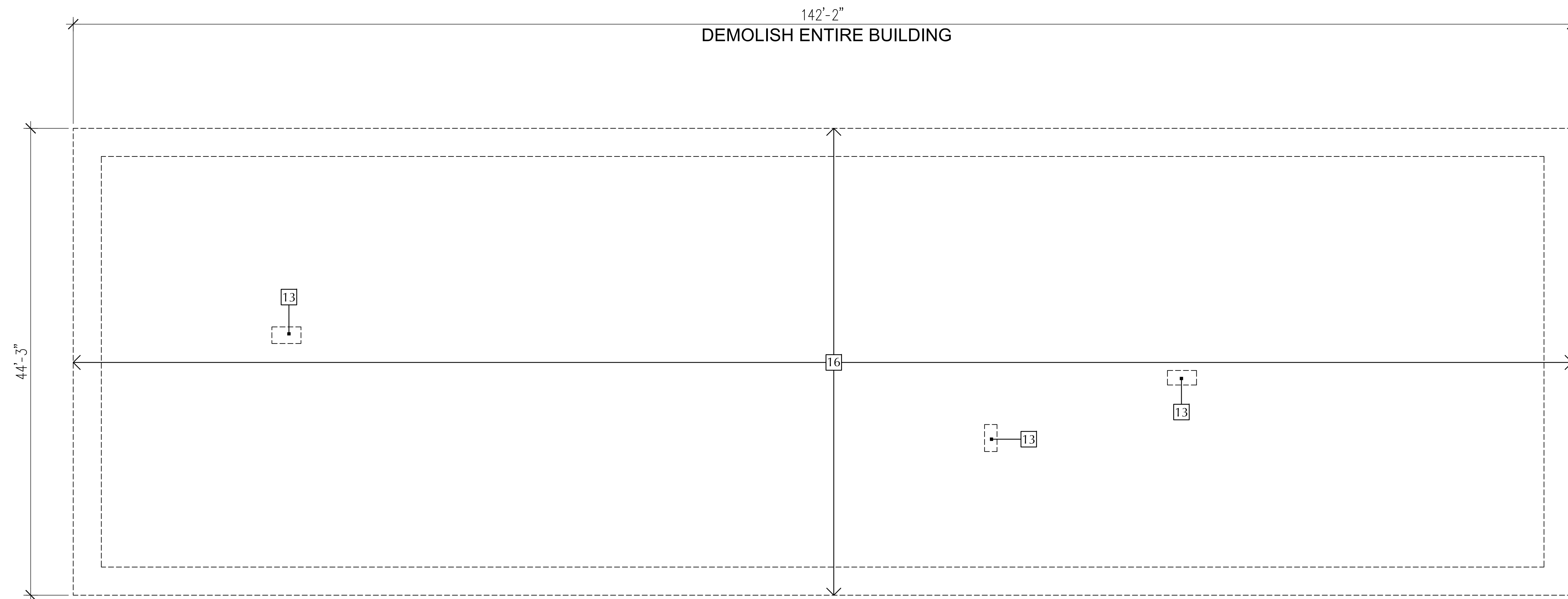
SCALE: 3/16" = 1' - 0"



These Design And Drawings Are The Copyrighted Property Of Revuelta Architecture International, P.A., and May Not Be Reproduced, Copied, or Transmitted In Any Form or By Any Means, Without The Prior Written Consent of the Architect.

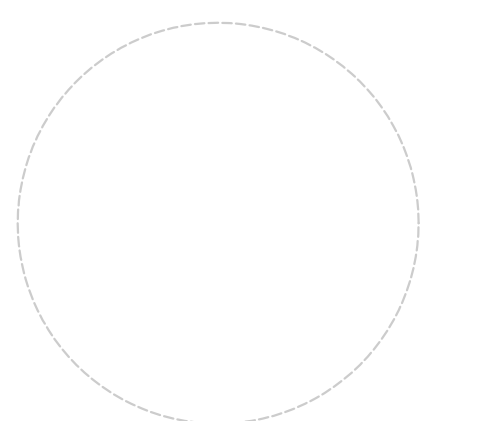
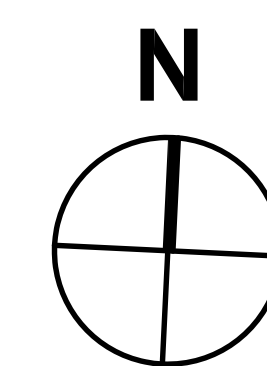
SELECTIVE DEMOLITION KEYNOTES

- | | |
|--|--|
| <ul style="list-style-type: none"> 1 REMOVE EXISTING WINDOW AND WINDOW FRAME 2 REMOVE EXISTING DOOR AND DOOR FRAME 3 REMOVE EXISTING GLASS BLOCK 4 REMOVE EXISTING INTERIOR WALLS 5 REMOVE EXISTING EXTERIOR WALL 6 PROTECT AND REPAIR HISTORIC TERRAZZO FLOORING 7 PROTECT AND REPAIR HISTORIC STAIR AND RAILINGS 8 PROTECT AND REPAIR HISTORIC CEILING MOLDINGS 9 REMOVE TRASH CHUTE 10 STORE AND PROTECT HISTORIC WINDOW FRAMES FOR RE-USE 11 STORE AND PROTECT HISTORIC ELEVATOR DOOR FOR RE-USE 12 REMOVE EXISTING STAIR AND RAILINGS 13 REMOVE ALL MECHANICAL AND ELECTRICAL EQUIPMENT 14 REMOVE ALL PLUMBING FIXTURES AND TOILET PARTITIONS 15 REMOVE EXISTING NON-HISTORICAL RAILING 16 DEMOLISH SECTION OF BUILDING IN ITS ENTIRETY AS SHOWN 17 REMOVE AND REBUILD EXISTING FLOOR SLAB ON AREA SHOWN | <ul style="list-style-type: none"> 18 REMOVE EXISTING WALL FINISH 19 REMOVE EXISTING METAL GATE 20 REMOVE EXISTING STOREFRONT 21 REMOVE EXISTING NON-HISTORICAL RAMP 22 REMOVE EXISTING METAL STAIR, SUPPORTS AND RAILINGS 23 REMOVE EXISTING EXTERIOR MECHANICAL CHASE 24 REMOVE EXISTING KNEE WALL 25 REMOVE EXISTING METAL FENCE 26 REMOVE EXISTING NON-HISTORICAL ORNAMENTATION 27 REMOVE EXISTING NON-HISTORICAL FIRE PLACE 28 REMOVE EXISTING ELEVATOR AND ASSOCIATED EQUIPMENT 29 PROTECT AND REPAIR HISTORIC GUARD RAIL 30 REMOVE EXISTING BUILT-IN COUNTERS 31 REMOVE ALL ROOFING MATERIALS DOWN TO STRUCTURAL SLAB 32 REMOVE NON-HISTORICAL DECORATIVE BLOCK AND RAILING 33 REMOVE EXISTING BALCONY AND GUARD RAIL 34 EXISTING BALCONY AND GUARD RAIL TO REMAIN 35 REMOVE EXISTING FLOOR SLAB AS SHOWN |
|--|--|



7420 OCEAN TERRACE ROOF PLAN - DEMOLITION

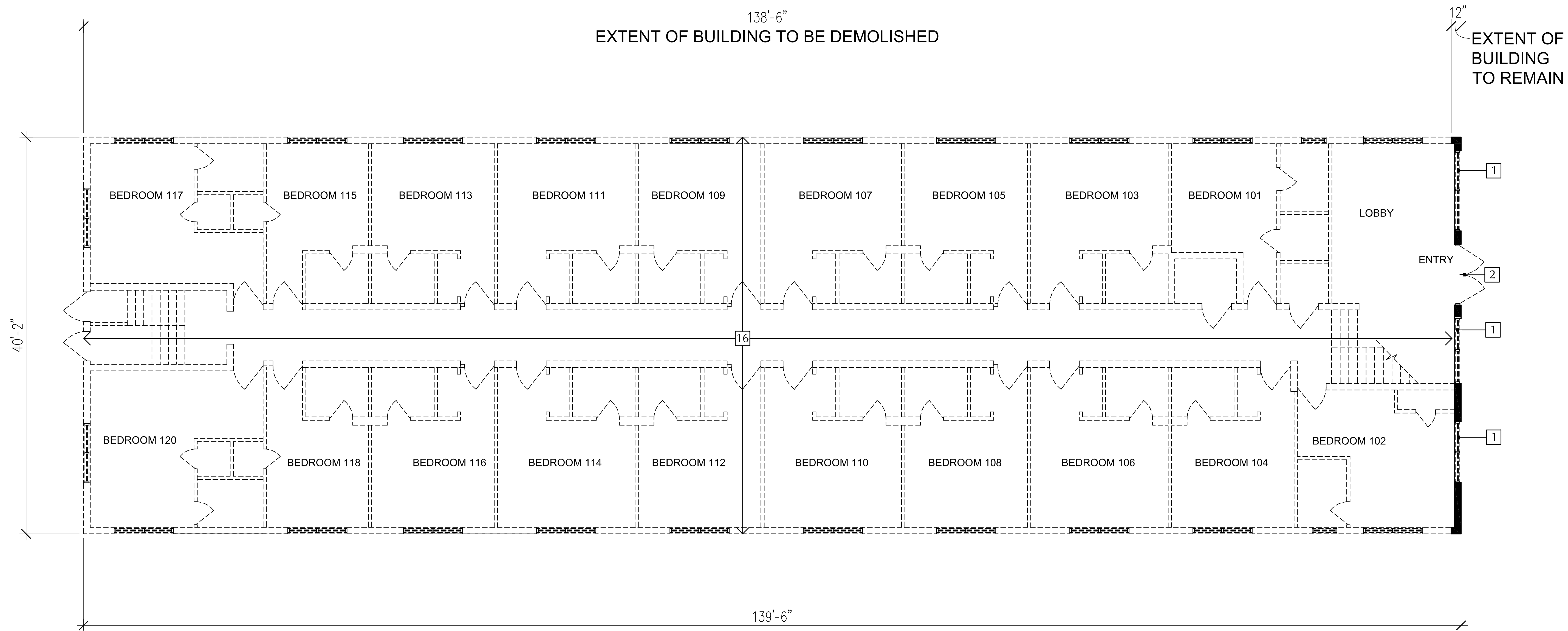
SCALE: 3/16" = 1' - 0"



These Design And Drawings Are The Copyrighted Property Of Revuelta Architecture International P.A. and May Not Be Reproduced, Copied, or Distributed Without the Written Consent of the Architect. The Architect Assumes No Responsibility For Accuracy or Completeness of Information Provided by Others. The Architect Assumes No Responsibility For Accuracy or Completeness of Information Provided by Others. The Architect Assumes No Responsibility For Accuracy or Completeness of Information Provided by Others.

SELECTIVE DEMOLITION KEYNOTES

- | | |
|--|---|
| 1 REMOVE EXISTING WINDOW AND WINDOW FRAME | 18 REMOVE EXISTING WALL FINISH |
| 2 REMOVE EXISTING DOOR AND DOOR FRAME | 19 REMOVE EXISTING METAL GATE |
| 3 REMOVE EXISTING GLASS BLOCK | 20 REMOVE EXISTING STOREFRONT |
| 4 REMOVE EXISTING INTERIOR WALLS | 21 REMOVE EXISTING NON-HISTORICAL RAMP |
| 5 REMOVE EXISTING EXTERIOR WALL | 22 REMOVE EXISTING METAL STAIR, SUPPORTS AND RAILINGS |
| 6 PROTECT AND REPAIR HISTORIC TERRAZZO FLOORING | 23 REMOVE EXISTING EXTERIOR MECHANICAL CHASE |
| 7 PROTECT AND REPAIR HISTORIC STAIR AND RAILINGS | 24 REMOVE EXISTING KNEE WALL |
| 8 PROTECT AND REPAIR HISTORIC CEILING MOLDINGS | 25 REMOVE EXISTING METAL FENCE |
| 9 REMOVE TRASH CHUTE | 26 REMOVE EXISTING NON-HISTORICAL ORNAMENTATION |
| 10 STORE AND PROTECT HISTORIC WINDOW FRAMES FOR RE-USE | 27 REMOVE EXISTING NON-HISTORICAL FIRE PLACE |
| 11 STORE AND PROTECT HISTORIC ELEVATOR DOOR FOR RE-USE | 28 REMOVE EXISTING ELEVATOR AND ASSOCIATED EQUIPMENT |
| 12 REMOVE EXISTING STAIR AND RAILINGS | 29 PROTECT AND REPAIR HISTORIC GUARD RAIL |
| 13 REMOVE ALL MECHANICAL AND ELECTRICAL EQUIPMENT | 30 REMOVE EXISTING BUILT-IN COUNTERS |
| 14 REMOVE ALL PLUMBING FIXTURES AND TOILET PARTITIONS | 31 REMOVE ALL ROOFING MATERIALS DOWN TO STRUCTURAL SLAB |
| 15 REMOVE EXISTING NON-HISTORICAL RAILING | 32 REMOVE NON-HISTORICAL DECORATIVE BLOCK AND RAILING |
| 16 DEMOLISH SECTION OF BUILDING IN ITS ENTIRETY AS SHOWN | 33 REMOVE EXISTING BALCONY AND GUARD RAIL |
| 17 REMOVE AND REBUILD EXISTING FLOOR SLAB ON AREA SHOWN | 34 EXISTING BALCONY AND GUARD RAIL TO REMAIN |
| | 35 REMOVE EXISTING FLOOR SLAB AS SHOWN |



7410 OCEAN TERRACE FIRST FLOOR PLAN - SELECTIVE DEMOLITION

SCALE: 3/16" = 1' - 0"

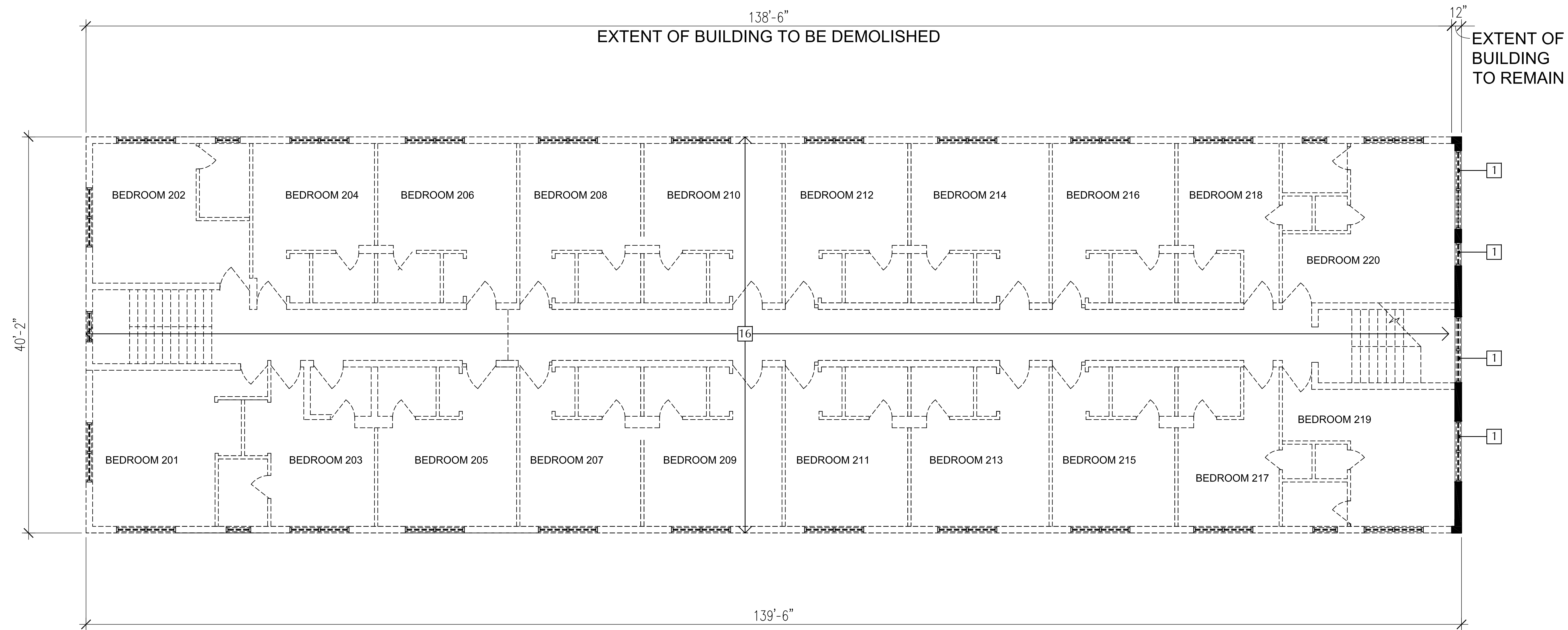
OCEAN TERRACE RESTORATION NOTES:

1- THE FRONT FACADE IS TO BE PRESERVED AND RESTORED. IF THE FACADE(S) ARE DETERMINED TO BE STRUCTURALLY INCAPABLE OF BEING PRESERVED, AN APPLICATION SHALL BE SUBMITTED TO THE HPB FOR THE REVIEW OF ADDITIONAL DEMOLITION AND RECONSTRUCTION. THE APPLICANT WILL THEN USE THE LASER SURVEY TO CONSTRUCT A REPLICA OF THE FRONT FACADE.

These Design And Drawings Are The Copyrighted Property Of Revuelta Architecture International, P.A., and May Not Be Reproduced, Stored, or Transmitted in Any Form or by Any Means, Electronic or Mechanical, Without the Prior Written Consent of the Architect. The Architect Assumes No Responsibility for the Accuracy of the Information Provided in These Drawings. The Architect's Office is Located at 2950 SW 27th Ave., Suite 110, Miami, FL 33133. Phone: 305.590.5000. Fax: 305.590.5040. Website: www.revuelta.com

SELECTIVE DEMOLITION KEYNOTES

- | | |
|--|---|
| 1 REMOVE EXISTING WINDOW AND WINDOW FRAME | 18 REMOVE EXISTING WALL FINISH |
| 2 REMOVE EXISTING DOOR AND DOOR FRAME | 19 REMOVE EXISTING METAL GATE |
| 3 REMOVE EXISTING GLASS BLOCK | 20 REMOVE EXISTING STOREFRONT |
| 4 REMOVE EXISTING INTERIOR WALLS | 21 REMOVE EXISTING NON-HISTORICAL RAMP |
| 5 REMOVE EXISTING EXTERIOR WALL | 22 REMOVE EXISTING METAL STAIR, SUPPORTS AND RAILINGS |
| 6 PROTECT AND REPAIR HISTORIC TERRAZZO FLOORING | 23 REMOVE EXISTING EXTERIOR MECHANICAL CHASE |
| 7 PROTECT AND REPAIR HISTORIC STAIR AND RAILINGS | 24 REMOVE EXISTING KNEE WALL |
| 8 PROTECT AND REPAIR HISTORIC CEILING MOLDINGS | 25 REMOVE EXISTING METAL FENCE |
| 9 REMOVE TRASH CHUTE | 26 REMOVE EXISTING NON-HISTORICAL ORNAMENTATION |
| 10 STORE AND PROTECT HISTORIC WINDOW FRAMES FOR RE-USE | 27 REMOVE EXISTING NON-HISTORICAL FIRE PLACE |
| 11 STORE AND PROTECT HISTORIC ELEVATOR DOOR FOR RE-USE | 28 REMOVE EXISTING ELEVATOR AND ASSOCIATED EQUIPMENT |
| 12 REMOVE EXISTING STAIR AND RAILINGS | 29 PROTECT AND REPAIR HISTORIC GUARD RAIL |
| 13 REMOVE ALL MECHANICAL AND ELECTRICAL EQUIPMENT | 30 REMOVE EXISTING BUILT-IN COUNTERS |
| 14 REMOVE ALL PLUMBING FIXTURES AND TOILET PARTITIONS | 31 REMOVE ALL ROOFING MATERIALS DOWN TO STRUCTURAL SLAB |
| 15 REMOVE EXISTING NON-HISTORICAL RAILING | 32 REMOVE NON-HISTORICAL DECORATIVE BLOCK AND RAILING |
| 16 DEMOLISH SECTION OF BUILDING IN ITS ENTIRETY AS SHOWN | 33 REMOVE EXISTING BALCONY AND GUARD RAIL |
| 17 REMOVE AND REBUILD EXISTING FLOOR SLAB ON AREA SHOWN | 34 EXISTING BALCONY AND GUARD RAIL TO REMAIN |
| | 35 REMOVE EXISTING FLOOR SLAB AS SHOWN |



7410 OCEAN TERRACE SECOND FLOOR PLAN - SELECTIVE DEMOLITION

SCALE: 3/16" = 1' - 0"

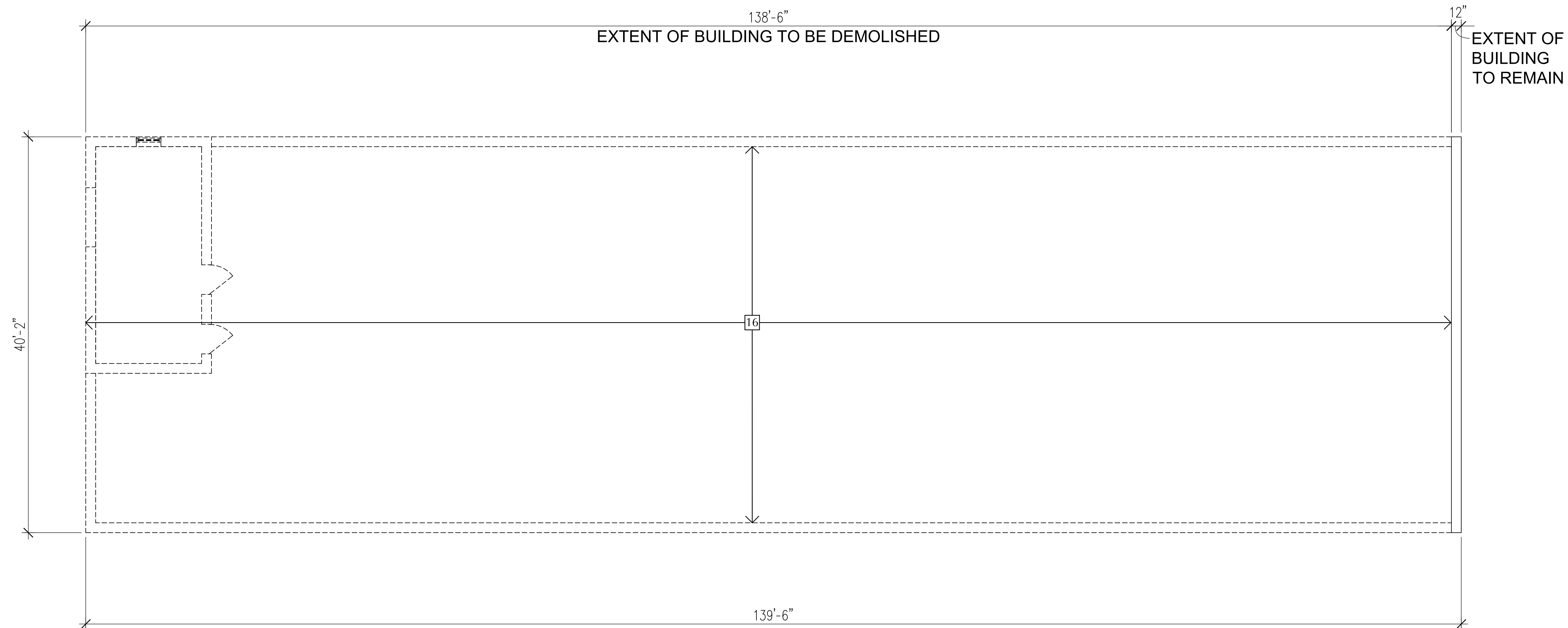
OCEAN TERRACE RESTORATION NOTES:

1- THE FRONT FACADE IS TO BE PRESERVED AND RESTORED. IF THE FACADE(S) ARE DETERMINED TO BE STRUCTURALLY INCAPABLE OF BEING PRESERVED, AN APPLICATION SHALL BE SUBMITTED TO THE HPB FOR THE REVIEW OF ADDITIONAL DEMOLITION AND RECONSTRUCTION. THE APPLICANT WILL THEN USE THE LASER SURVEY TO CONSTRUCT A REPLICA OF THE FRONT FACADE.

These Design And Drawings Are The Copyrighted Property Of Revuelta Architecture International P.A. and May Not Be Reproduced, Stored, or Transmitted in Any Form or by Any Means, Electronic or Mechanical, Without the Prior Written Consent of the Architect. The Architect Assumes No Responsibility for the Accuracy of the Information Provided in These Drawings. Drawings Not to Be Scaled.

SELECTIVE DEMOLITION KEYNOTES

- | | |
|--|---|
| 1 REMOVE EXISTING WINDOW AND WINDOW FRAME | 18 REMOVE EXISTING WALL FINISH |
| 2 REMOVE EXISTING DOOR AND DOOR FRAME | 19 REMOVE EXISTING METAL GATE |
| 3 REMOVE EXISTING GLASS BLOCK | 20 REMOVE EXISTING STOREFRONT |
| 4 REMOVE EXISTING INTERIOR WALLS | 21 REMOVE EXISTING NON-HISTORICAL RAMP |
| 5 REMOVE EXISTING EXTERIOR WALL | 22 REMOVE EXISTING METAL STAIR, SUPPORTS AND RAILINGS |
| 6 PROTECT AND REPAIR HISTORIC TERRAZZO FLOORING | 23 REMOVE EXISTING EXTERIOR MECHANICAL CHASE |
| 7 PROTECT AND REPAIR HISTORIC STAIR AND RAILINGS | 24 REMOVE EXISTING KNEE WALL |
| 8 PROTECT AND REPAIR HISTORIC CEILING MOLDINGS | 25 REMOVE EXISTING METAL FENCE |
| 9 REMOVE TRASH CHUTE | 26 REMOVE EXISTING NON-HISTORICAL ORNAMENTATION |
| 10 STORE AND PROTECT HISTORIC WINDOW FRAMES FOR RE-USE | 27 REMOVE EXISTING NON-HISTORICAL FIRE PLACE |
| 11 STORE AND PROTECT HISTORIC ELEVATOR DOOR FOR RE-USE | 28 REMOVE EXISTING ELEVATOR AND ASSOCIATED EQUIPMENT |
| 12 REMOVE EXISTING STAIR AND RAILINGS | 29 PROTECT AND REPAIR HISTORIC GUARD RAIL |
| 13 REMOVE ALL MECHANICAL AND ELECTRICAL EQUIPMENT | 30 REMOVE EXISTING BUILT-IN COUNTERS |
| 14 REMOVE ALL PLUMBING FIXTURES AND TOILET PARTITIONS | 31 REMOVE ALL ROOFING MATERIALS DOWN TO STRUCTURAL SLAB |
| 15 REMOVE EXISTING NON-HISTORICAL RAILING | 32 REMOVE NON-HISTORICAL DECORATIVE BLOCK AND RAILING |
| 16 DEMOLISH SECTION OF BUILDING IN ITS ENTIRETY AS SHOWN | 33 REMOVE EXISTING BALCONY AND GUARD RAIL |
| 17 REMOVE AND REBUILD EXISTING FLOOR SLAB ON AREA SHOWN | 34 EXISTING BALCONY AND GUARD RAIL TO REMAIN |
| | 35 REMOVE EXISTING FLOOR SLAB AS SHOWN |



7410 OCEAN TERRACE ROOF PLAN - SELECTIVE DEMOLITION

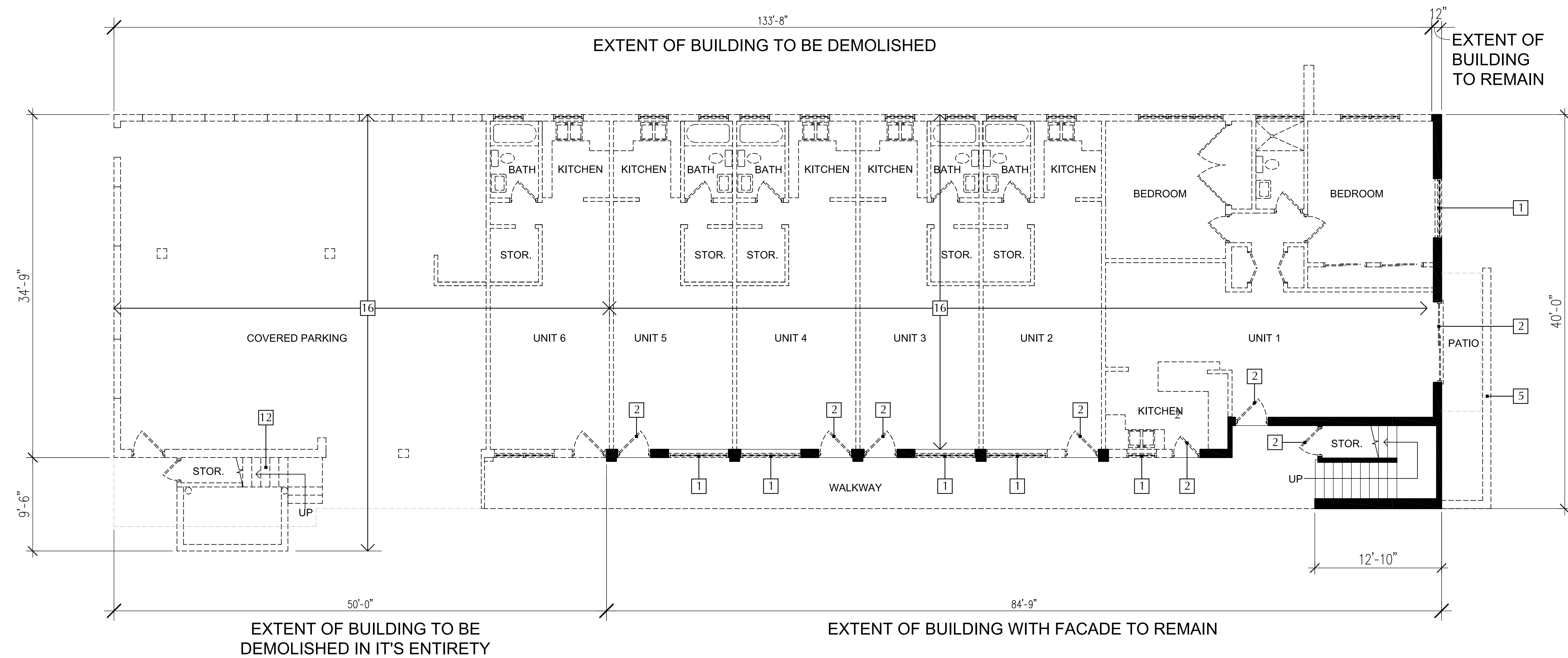
SCALE: 3/16" = 1' - 0"

OCEAN TERRACE RESTORATION NOTES:

1- THE FRONT FACADE IS TO BE PRESERVED AND RESTORED. IF THE FACADE(S) ARE DETERMINED TO BE STRUCTURALLY INCAPABLE OF BEING PRESERVED, AN APPLICATION SHALL BE SUBMITTED TO THE HPB FOR THE REVIEW OF ADDITIONAL DEMOLITION AND RECONSTRUCTION. THE APPLICANT WILL THEN USE THE LASER SURVEY TO CONSTRUCT A REPLICA OF THE FRONT FACADE.

SELECTIVE DEMOLITION KEYNOTES

- | | |
|--|---|
| 1 REMOVE EXISTING WINDOW AND WINDOW FRAME | 18 REMOVE EXISTING WALL FINISH |
| 2 REMOVE EXISTING DOOR AND DOOR FRAME | 19 REMOVE EXISTING METAL GATE |
| 3 REMOVE EXISTING GLASS BLOCK | 20 REMOVE EXISTING STOREFRONT |
| 4 REMOVE EXISTING INTERIOR WALLS | 21 REMOVE EXISTING NON-HISTORICAL RAMP |
| 5 REMOVE EXISTING EXTERIOR WALL | 22 REMOVE EXISTING METAL STAIR, SUPPORTS AND RAILINGS |
| 6 PROTECT AND REPAIR HISTORIC TERRAZZO FLOORING | 23 REMOVE EXISTING EXTERIOR MECHANICAL CHASE |
| 7 PROTECT AND REPAIR HISTORIC STAIR AND RAILINGS | 24 REMOVE EXISTING KNEE WALL |
| 8 PROTECT AND REPAIR HISTORIC CEILING MOLDINGS | 25 REMOVE EXISTING METAL FENCE |
| 9 REMOVE TRASH CHUTE | 26 REMOVE EXISTING NON-HISTORICAL ORNAMENTATION |
| 10 STORE AND PROTECT HISTORIC WINDOW FRAMES FOR RE-USE | 27 REMOVE EXISTING NON-HISTORICAL FIRE PLACE |
| 11 STORE AND PROTECT HISTORIC ELEVATOR DOOR FOR RE-USE | 28 REMOVE EXISTING ELEVATOR AND ASSOCIATED EQUIPMENT |
| 12 REMOVE EXISTING STAIR AND RAILINGS | 29 PROTECT AND REPAIR HISTORIC GUARD RAIL |
| 13 REMOVE ALL MECHANICAL AND ELECTRICAL EQUIPMENT | 30 REMOVE EXISTING BUILT-IN COUNTERS |
| 14 REMOVE ALL PLUMBING FIXTURES AND TOILET PARTITIONS | 31 REMOVE ALL ROOFING MATERIALS DOWN TO STRUCTURAL SLAB |
| 15 REMOVE EXISTING NON-HISTORICAL RAILING | 32 REMOVE NON-HISTORICAL DECORATIVE BLOCK AND RAILING |
| 16 DEMOLISH SECTION OF BUILDING IN ITS ENTIRETY AS SHOWN | 33 REMOVE EXISTING BALCONY AND GUARD RAIL |
| 17 REMOVE AND REBUILD EXISTING FLOOR SLAB ON AREA SHOWN | 34 EXISTING BALCONY AND GUARD RAIL TO REMAIN |
| | 35 REMOVE EXISTING FLOOR SLAB AS SHOWN |



7400 OCEAN TERRACE FIRST FLOOR PLAN - SELECTIVE DEMOLITION

SCALE: 3/16" = 1' - 0"

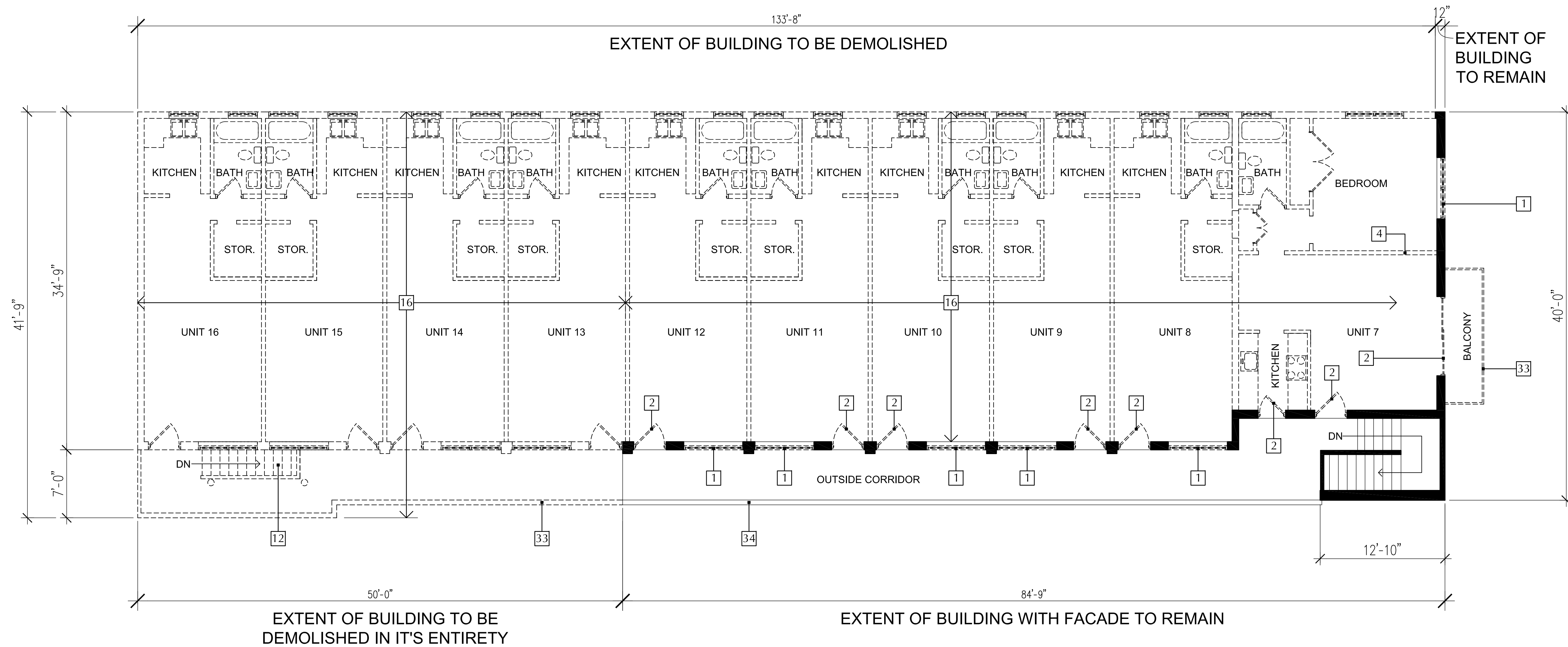
OCEAN TERRACE RESTORATION NOTES:

1- THE FRONT FACADE IS TO BE PRESERVED AND RESTORED. IF THE FACADE(S) ARE DETERMINED TO BE STRUCTURALLY INCAPABLE OF BEING PRESERVED, AN APPLICATION SHALL BE SUBMITTED TO THE HPB FOR THE REVIEW OF ADDITIONAL DEMOLITION AND RECONSTRUCTION. THE APPLICANT WILL THEN USE THE LASER SURVEY TO CONSTRUCT A REPLICA OF THE FRONT FACADE.

These Design And Drawings Are The Copyrighted Property Of Revuelta Architecture International P.A. and May Not Be Reproduced, Stored, or Transmitted in Any Form or by Any Means, Electronic or Mechanical, Without the Prior Written Consent of the Architect. The Architect Assumes No Responsibility for the Accuracy of the Information Provided in the Drawings. The Architect's Office is Located at 2199 Ponce de Leon Blvd., Suite 400, Coral Gables, FL 33134. Telephone: 305/446-7799. Fax: 305/446-9275.

SELECTIVE DEMOLITION KEYNOTES

- | | |
|--|---|
| 1 REMOVE EXISTING WINDOW AND WINDOW FRAME | 18 REMOVE EXISTING WALL FINISH |
| 2 REMOVE EXISTING DOOR AND DOOR FRAME | 19 REMOVE EXISTING METAL GATE |
| 3 REMOVE EXISTING GLASS BLOCK | 20 REMOVE EXISTING STOREFRONT |
| 4 REMOVE EXISTING INTERIOR WALLS | 21 REMOVE EXISTING NON-HISTORICAL RAMP |
| 5 REMOVE EXISTING EXTERIOR WALL | 22 REMOVE EXISTING METAL STAIR, SUPPORTS AND RAILINGS |
| 6 PROTECT AND REPAIR HISTORIC TERRAZZO FLOORING | 23 REMOVE EXISTING EXTERIOR MECHANICAL CHASE |
| 7 PROTECT AND REPAIR HISTORIC STAIR AND RAILINGS | 24 REMOVE EXISTING KNEE WALL |
| 8 PROTECT AND REPAIR HISTORIC CEILING MOLDINGS | 25 REMOVE EXISTING METAL FENCE |
| 9 REMOVE TRASH CHUTE | 26 REMOVE EXISTING NON-HISTORICAL ORNAMENTATION |
| 10 STORE AND PROTECT HISTORIC WINDOW FRAMES FOR RE-USE | 27 REMOVE EXISTING NON-HISTORICAL FIRE PLACE |
| 11 STORE AND PROTECT HISTORIC ELEVATOR DOOR FOR RE-USE | 28 REMOVE EXISTING ELEVATOR AND ASSOCIATED EQUIPMENT |
| 12 REMOVE EXISTING STAIR AND RAILINGS | 29 PROTECT AND REPAIR HISTORIC GUARD RAIL |
| 13 REMOVE ALL MECHANICAL AND ELECTRICAL EQUIPMENT | 30 REMOVE EXISTING BUILT-IN COUNTERS |
| 14 REMOVE ALL PLUMBING FIXTURES AND TOILET PARTITIONS | 31 REMOVE ALL ROOFING MATERIALS DOWN TO STRUCTURAL SLAB |
| 15 REMOVE EXISTING NON-HISTORICAL RAILING | 32 REMOVE NON-HISTORICAL DECORATIVE BLOCK AND RAILING |
| 16 DEMOLISH SECTION OF BUILDING IN ITS ENTIRETY AS SHOWN | 33 REMOVE EXISTING BALCONY AND GUARD RAIL |
| 17 REMOVE AND REBUILD EXISTING FLOOR SLAB ON AREA SHOWN | 34 EXISTING BALCONY AND GUARD RAIL TO REMAIN |
| | 35 REMOVE EXISTING FLOOR SLAB AS SHOWN |



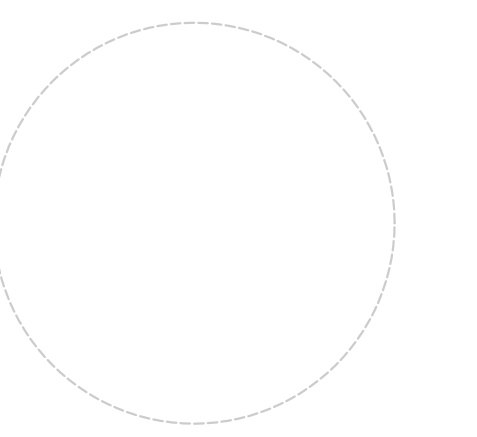
7400 OCEAN TERRACE SECOND FLOOR PLAN - SELECTIVE DEMOLITION

SCALE: 3/16" = 1' - 0"

OCEAN TERRACE RESTORATION NOTES:

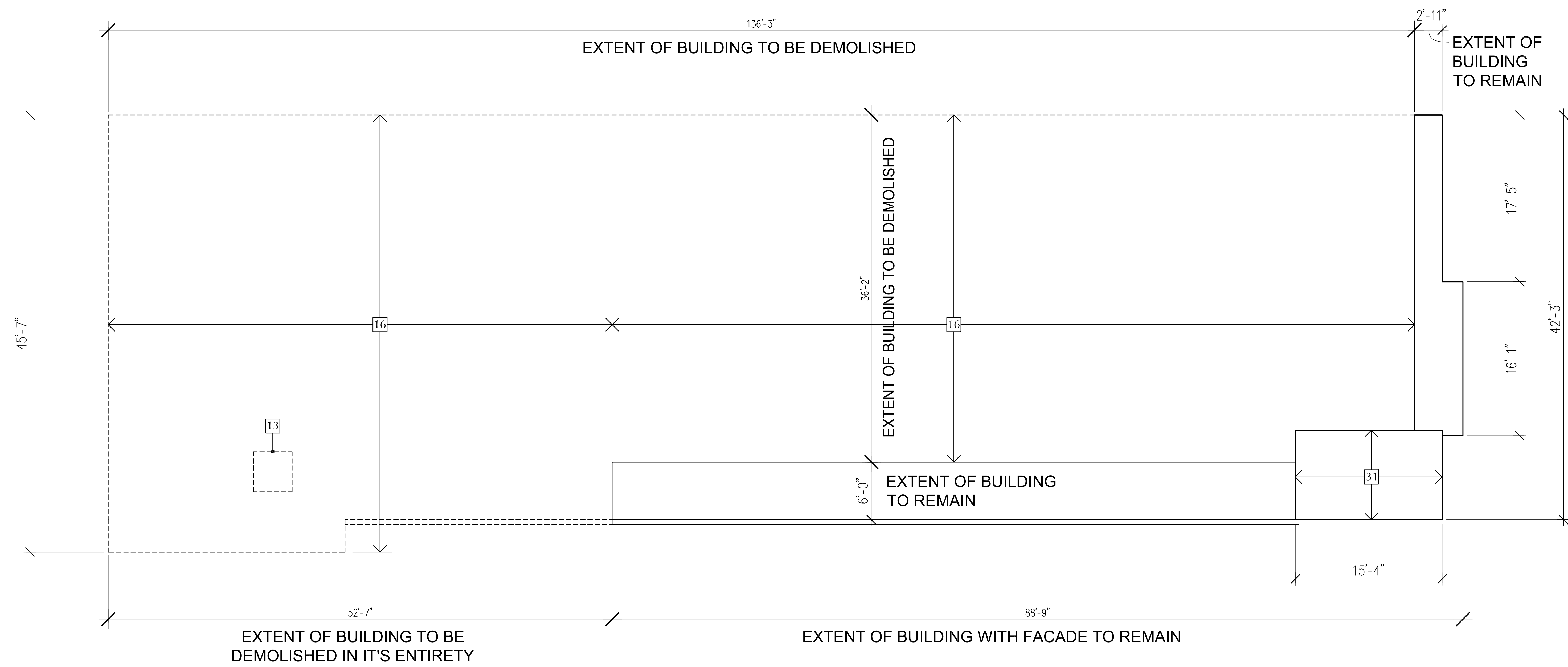
1- THE FRONT FACADE IS TO BE PRESERVED AND RESTORED. IF THE FACADE(S) ARE DETERMINED TO BE STRUCTURALLY INCAPABLE OF BEING PRESERVED, AN APPLICATION SHALL BE SUBMITTED TO THE HPB FOR THE REVIEW OF ADDITIONAL DEMOLITION AND RECONSTRUCTION. THE APPLICANT WILL THEN USE THE LASER SURVEY TO CONSTRUCT A REPLICA OF THE FRONT FACADE.

These Design And Drawings Are The Copyrighted Property Of Revuelta Architecture International P.A. and May Not Be Reproduced, Stored, or Transmitted in Any Form or by Any Means, Electronic or Mechanical, Without the Prior Written Consent of the Architect. The Architect Assumes No Responsibility for Accuracy of Information Provided by Others. The Architect's Responsibility is Limited to the Design and Construction Documents Only. The Architect's Responsibility is Not to be Scaled.



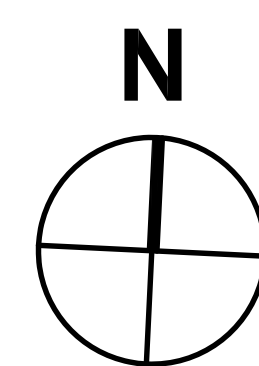
SELECTIVE DEMOLITION KEYNOTES

- | | |
|--|---|
| 1 REMOVE EXISTING WINDOW AND WINDOW FRAME | 18 REMOVE EXISTING WALL FINISH |
| 2 REMOVE EXISTING DOOR AND DOOR FRAME | 19 REMOVE EXISTING METAL GATE |
| 3 REMOVE EXISTING GLASS BLOCK | 20 REMOVE EXISTING STOREFRONT |
| 4 REMOVE EXISTING INTERIOR WALLS | 21 REMOVE EXISTING NON-HISTORICAL RAMP |
| 5 REMOVE EXISTING EXTERIOR WALL | 22 REMOVE EXISTING METAL STAIR, SUPPORTS AND RAILINGS |
| 6 PROTECT AND REPAIR HISTORIC TERRAZZO FLOORING | 23 REMOVE EXISTING EXTERIOR MECHANICAL CHASE |
| 7 PROTECT AND REPAIR HISTORIC STAIR AND RAILINGS | 24 REMOVE EXISTING KNEE WALL |
| 8 PROTECT AND REPAIR HISTORIC CEILING MOLDINGS | 25 REMOVE EXISTING METAL FENCE |
| 9 REMOVE TRASH CHUTE | 26 REMOVE EXISTING NON-HISTORICAL ORNAMENTATION |
| 10 STORE AND PROTECT HISTORIC WINDOW FRAMES FOR RE-USE | 27 REMOVE EXISTING NON-HISTORICAL FIRE PLACE |
| 11 STORE AND PROTECT HISTORIC ELEVATOR DOOR FOR RE-USE | 28 REMOVE EXISTING ELEVATOR AND ASSOCIATED EQUIPMENT |
| 12 REMOVE EXISTING STAIR AND RAILINGS | 29 PROTECT AND REPAIR HISTORIC GUARD RAIL |
| 13 REMOVE ALL MECHANICAL AND ELECTRICAL EQUIPMENT | 30 REMOVE EXISTING BUILT-IN COUNTERS |
| 14 REMOVE ALL PLUMBING FIXTURES AND TOILET PARTITIONS | 31 REMOVE ALL ROOFING MATERIALS DOWN TO STRUCTURAL SLAB |
| 15 REMOVE EXISTING NON-HISTORICAL RAILING | 32 REMOVE NON-HISTORICAL DECORATIVE BLOCK AND RAILING |
| 16 DEMOLISH SECTION OF BUILDING IN ITS ENTIRETY AS SHOWN | 33 REMOVE EXISTING BALCONY AND GUARD RAIL |
| 17 REMOVE AND REBUILD EXISTING FLOOR SLAB ON AREA SHOWN | 34 EXISTING BALCONY AND GUARD RAIL TO REMAIN |
| | 35 REMOVE EXISTING FLOOR SLAB AS SHOWN |



7400 OCEAN TERRACE ROOF PLAN - SELECTIVE DEMOLITION

SCALE: 3/16" = 1' - 0"



OCEAN TERRACE RESTORATION NOTES:

1- THE FRONT FACADE IS TO BE PRESERVED AND RESTORED. IF THE FACADE(S) ARE DETERMINED TO BE STRUCTURALLY INCAPABLE OF BEING PRESERVED, AN APPLICATION SHALL BE SUBMITTED TO THE HPB FOR THE REVIEW OF ADDITIONAL DEMOLITION AND RECONSTRUCTION. THE APPLICANT WILL THEN USE THE LASER SURVEY TO CONSTRUCT A REPLICA OF THE FRONT FACADE.

These Design And Drawings Are The Copyrighted Property Of Revuelta Architecture International P.A. and May Not Be Reproduced, Stored, Copied, or Distributed Without the Written Consent of the Architect. Revuelta Architecture International P.A. is an Equal Opportunity Employer. All Rights Reserved. 11/10/2017 10:00 AM. Drawing No. 138-01. Scale: 3/16" = 1'-0".