

**ROOF PLAN LEGEND**

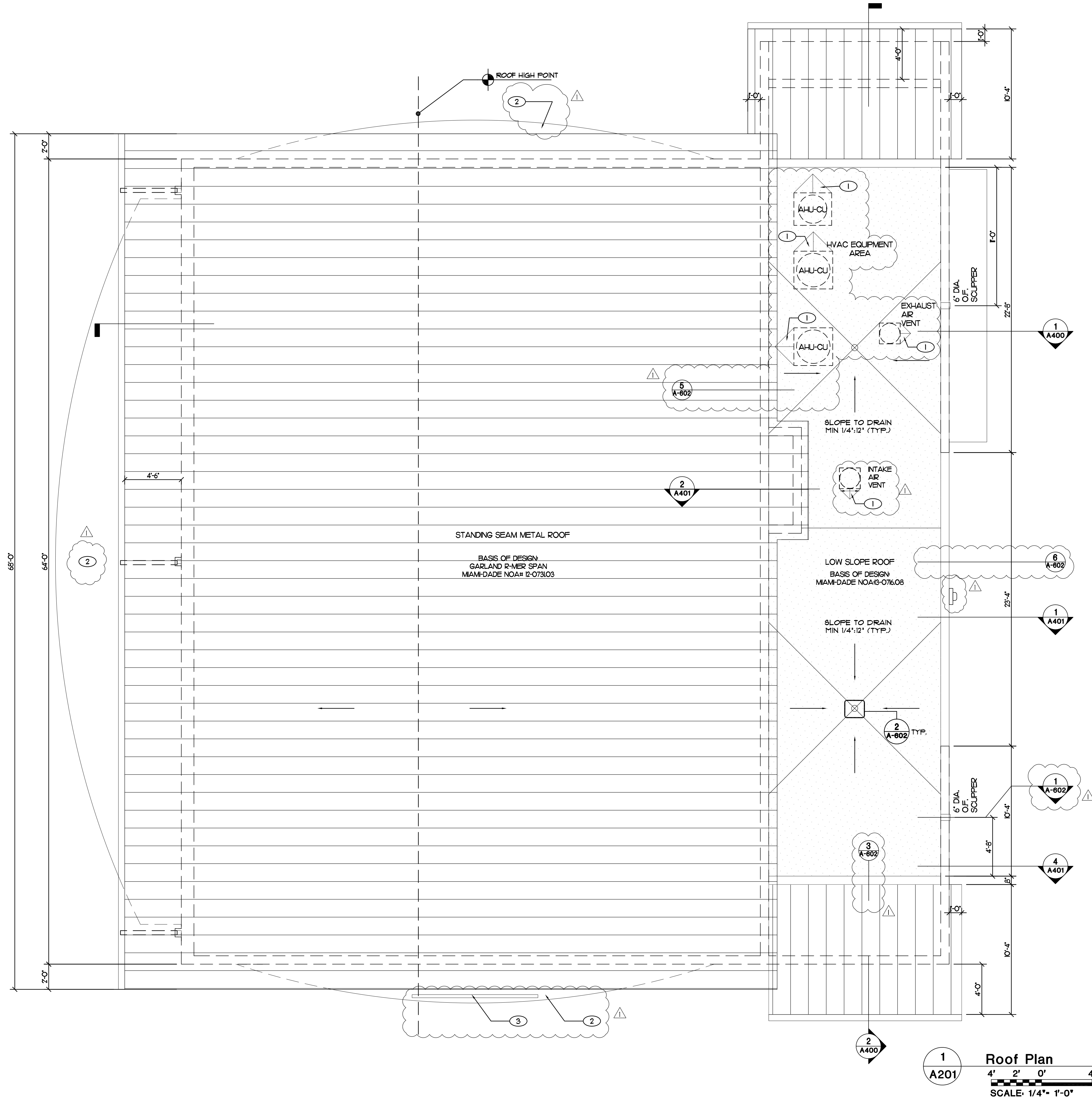
 INSULATED STANDING METAL ROOF.  
BASE OF DESIGN MIAM-DADE NOA# 12-073103

 MODIFIED BITUMINOUS MEMBRANE OVER POLYISO INSULATION OVER STEEL DECK. BASE OF DESIGN MIAM-DADE NOA# 13-07608

 STRUCTURE BELOW (REFER TO STRUCTURAL DRAWINGS)

**NOTES**

- ① PROVIDE CRICKETS TO DRAIN 1/4" PER FOOT SLOPE MINIMUM.
- ② LIQUID APPLIED WATERPROOFING MEMBRANE ON CONCRETE BRIS SOLEL BELOW, TYPICAL.
- ③ BUILDING SIGNAGE.

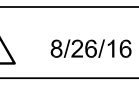


**1**  
A201

**Roof Plan**

4' 2' 0' 4' 8'

SCALE: 1/4" = 1'-0"

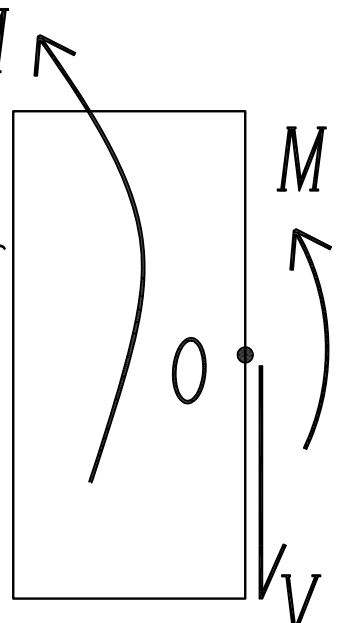
REVISIONS	BY
100% CD  8/26/16	

LOCATION:  
4300 CHASE AVENUE  
MIAMI BEACH,  
FLORIDA 33139

SEAL:  
NATIVIDAD SOTO, FAIA  
AR 9845

PROJECT TEAM:

**DOUGLAS WOOD ASSOCIATES, INC.**



STRUCTURAL ENGINEERS  
DOUGLAS WOOD ASSOCIATES, INC.  
5040 NW 7TH STREET  
SUITE 820  
MIAMI, FLORIDA 33126  
PH. 305 461-3450  
EE 6353  
inbox@douglaswood.biz  
www.douglaswood.biz

OWNER  
**MIAMI BEACH**  
CITY OF MIAMI BEACH  
1700 CONVENTION CENTER DRIVE  
MIAMI, FLORIDA 33139

ARCHITECTS  
FERGUSON GLASSOW SCHUSTER SOTO, INC.  
901 PONCE DE LEON BOULEVARD  
SUITE 304  
CORAL GABLES, FLORIDA 33134

LANDSCAPE ARCHITECTS  
SAVINO & MILLER DESIGN STUDIO  
12345 NE 6TH AVENUE A  
NORTH MIAMI, FLORIDA 33161

MEP  
EMTEC. CORP.  
250 CATALONIA AVENUE  
SUITE 406  
CORAL GABLES, FLORIDA 33134

CIVIL ENGINEERS  
BISCAYNE ENGINEERING COMPANY, INC.  
529 W. FLAGLER STREET  
MIAMI, FLORIDA 33130

LEED CONSULTANT  
SEBASTIAN EILERT ARCHITECTURE  
9840 SW 85TH STREET  
SUITE 304  
MIAMI, FLORIDA 33173

GEOTECHNICAL ENGINEER  
ARDAMAN & ASSOCIATES  
2608 W. 84TH STREET  
HALEAH, FLORIDA 33016

Project:  
**PAVILION, MUSS PARK**  
MIAMI BEACH, FLORIDA

Sheet Title: *Roof Plan*

Date: 07/05/16

Scale: AS SHOWN

Drawn by: NSG/ARG

Job: 15114

Sheet  
**A-201**