



MIAMI BEACH HISTORIC PRESERVATION BOARD FINAL SUBMITTAL
THE FIFTH HOTEL | 805 FIFTH STREET | MIAMI BEACH, FLORIDA

CLIENT / PROPERTY INFORMATION

URBANICA

PROPERTY ADDRESS
803 5TH STREET
MIAMI BEACH, FL 33139

EXISTING VEGETATION SUMMARY

The existing vegetation located on the property is composed of (2) mahogany trees and (1) invasive earleaf acasia, all of which are in conflict with the new site design and are marked to be removed. Please note that we are providing mitigation as per CMB regulations.

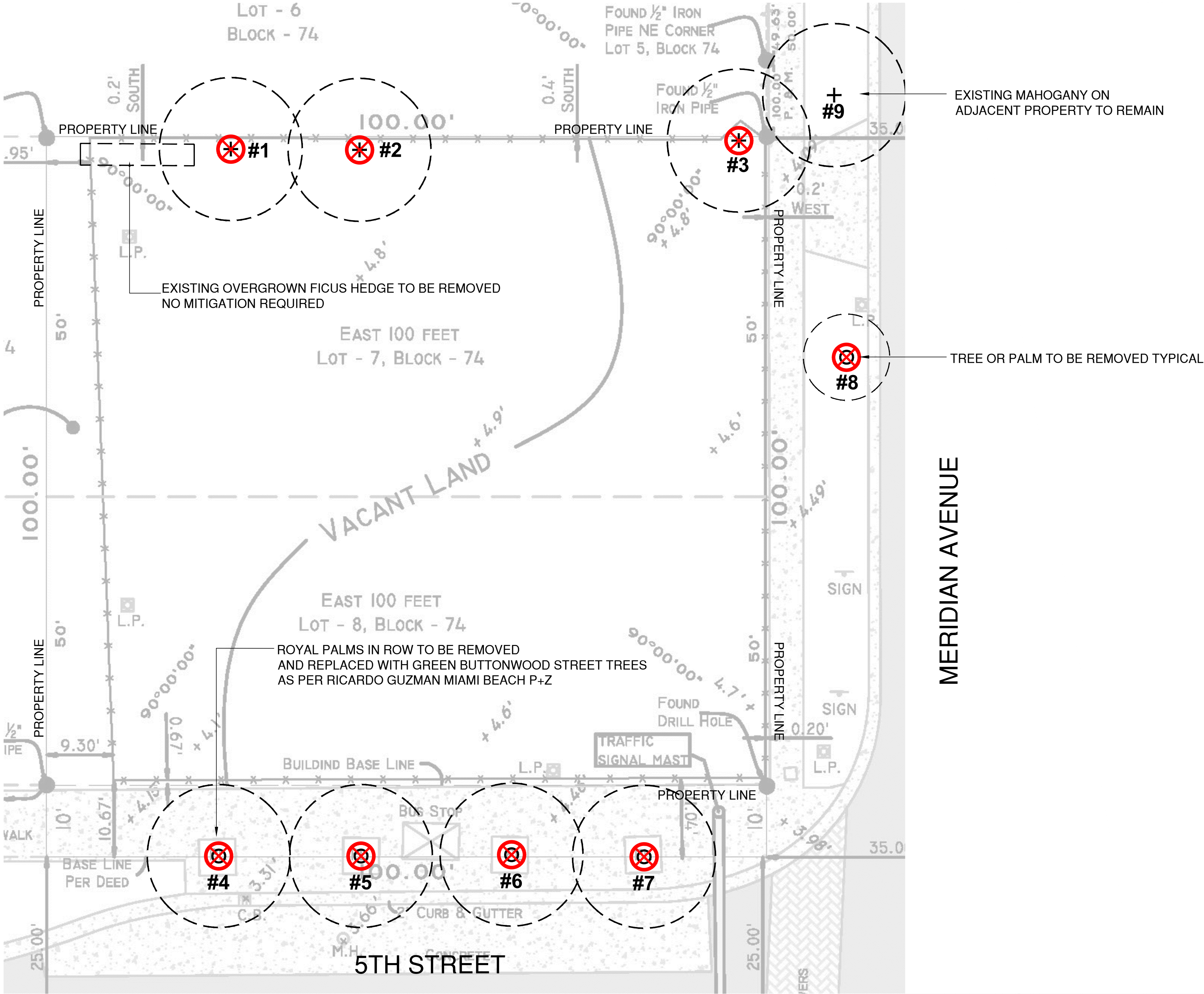
SCOPE OF WORK

- Landscape design for new boutique hotel, meeting City of Miami beach Landscape requirements

INDEX OF SHEETS

- L-0 Landscape Cover Page + Sheet Index
- L-1 Existing Tree Survey + Disposition Plan
- L-2a Ground Level Landscape Plan
- L-2b Second Level + Roof Landscape Plan
- L-3 Landscape Notes + Details
- L-4a Trees + Palms Images
- L-4b Shrubs + Groundcover Images

CHRISTOPHER CAWLEY, RLA
Florida License LA 0966785



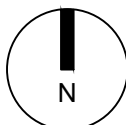
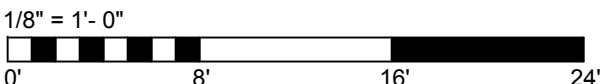
C.M.B. EXISTING TREE SURVEY LEGEND	
	TREE TO BE REMOVED. SEE CHART L-1
	TREE or PALM TO REMAIN. PRESERVE + PROTECT

- C.M.B. CHAPTER 46, DIVISION 2 - PALM SURVEY + DISPOSITION PLAN NOTES**
- ALL EXISTING TREE + PALM AND VEGETATION INFORMATION AS INDICATED HAS BEEN PREPARED AS AN OVERLAY ON THE SURVEY PREPARED BY BELLO + BELLO LAND SURVEYING CORP. DATED 05.04.17
 - THE INFORMATION AS PRESENTED HEREIN HAS BEEN FIELD VERIFIED BY THE LANDSCAPE ARCHITECT ON 8.18.17
 - MIAMI BEACH P+Z MUST APPROVE LANDSCAPE PLANS PRIOR TO REMOVING ANY TREES OR PALMS WITH A DBH BETWEEN 6" AND 12" INCHES. A WRITTEN TREE REMOVAL PERMIT IS REQUIRED FROM CITY OF MIAMI BEACH GREENSPACE MANAGEMENT / P.W FOR THE REMOVAL OF TREES / PALMS WITH A DBH GREATER THAN 12" INCHES OR IN THE R.O.W.
 - THE OWNER RESERVES THE RIGHT TO REMOVE ANY VEGETATION NOT LOCATED WITHIN THE CITY R.O.W. w/ a D.B.H. OF LESS THAN 6" WITHOUT OBTAINING A TREE REMOVAL PERMIT.
 - THERE ARE NO TREES or PALMS LOCATED ON THIS PROPERTY THAT WILL REQUIRE TEMPORARY IRRIGATION. ALL EXISTING TREES + PALMS ARE MATURE AND ARE CURRENTLY THRIVING WITHOUT SUPPLEMENTAL IRRIGATION WATER.

C.M.B. EXISTING TREE INVENTORY + DISPOSITION CHART - 803 FIFTH STREET												
NUMBER	COMMON NAME	BOTANICAL NAME	SPECIMEN	D.B.H. (IN)	HEIGHT (FT)	SPREAD (FT)	CONDITION	DISPOSITION	CANOPY AREA	CANOPY LOSS / MIT. REQ. (SF)	COMMENTS	PERMIT REQUIREMENTS P+Z, GPM, PW, N/A.
#1	Mahogany Tree	Swietenia mahagoni	YES	+/- 14"	+/- 30'	+/- 25'	FAIR	REMOVE	490 SF	490x 2 =980 SF	IN CONFLICT WITH SITE DESIGN. MITIGATION PROVIDED	GREEN SPACE MANGMT / PW
#2	Mahogany Tree	Swietenia mahagoni	YES	+/- 14"	+/- 30'	+/- 25'	FAIR	REMOVE	490 SF	490x 2 =980 SF	IN CONFLICT WITH SITE DESIGN. MITIGATION PROVIDED	GREEN SPACE MANGMT / PW
#3	Earleaf acacia	Acacia auriculiformis	NO	+/- 16"	+/- 40'	+/- 20'	FAIR	REMOVE	314 SF	0 SF	CATEGORY 1 INVASIVE. NO MITIGATION REQUIRED	GREEN SPACE MANGMT / PW
#4	Royal Palm	Roystonea elata	YES	+/- 24"	+/- 30'	+/- 15'	GOOD	REMOVE	177 SF	177 SF	TO BE REMOVED AS PER P+Z COMMENTS	GREEN SPACE MANGMT / PW
#5	Royal Palm	Roystonea elata	YES	+/- 24"	+/- 30'	+/- 15'	GOOD	REMOVE	177 SF	177 SF	TO BE REMOVED AS PER P+Z COMMENTS	GREEN SPACE MANGMT / PW
#6	Royal Palm	Roystonea elata	YES	+/- 24"	+/- 30'	+/- 15'	GOOD	REMOVE	177 SF	177 SF	TO BE REMOVED AS PER P+Z COMMENTS	GREEN SPACE MANGMT / PW
#7	Royal Palm	Roystonea elata	YES	+/- 24"	+/- 30'	+/- 15'	GOOD	REMOVE	177 SF	177 SF	TO BE REMOVED AS PER P+Z COMMENTS	GREEN SPACE MANGMT / PW
#8	Christmas Palm	Adonidia merrelli	NO	+/- 5"	+/- 15'	+/- 10'	FAIR	REMOVE	79 SF	79 SF	IN CONFLICT WITH SITE PLAN. MITIGATION PROVIDED	GREEN SPACE MANGMT / PW
#9	Mahogany Tree	Swietenia mahagoni	YES	+/- 16"	+/- 30'	+/- 25'	GOOD	REMAIN	490 SF	0 SF	ON ADJACENT PROPERTY	N/A
TOTAL MITIGATION REQUIRED: 2,747 SF TOTAL MITIGATION PROVIDED : 4,000 SF												

SEE MITIGATION SUMMARY ON SHEET L-2a FOR MORE INFORMATION

EXISTING TREE SURVEY + DISPOSITION CHART
MIAMI BEACH HISTORIC PRESERVATION BOARD FIRST SUBMITTAL



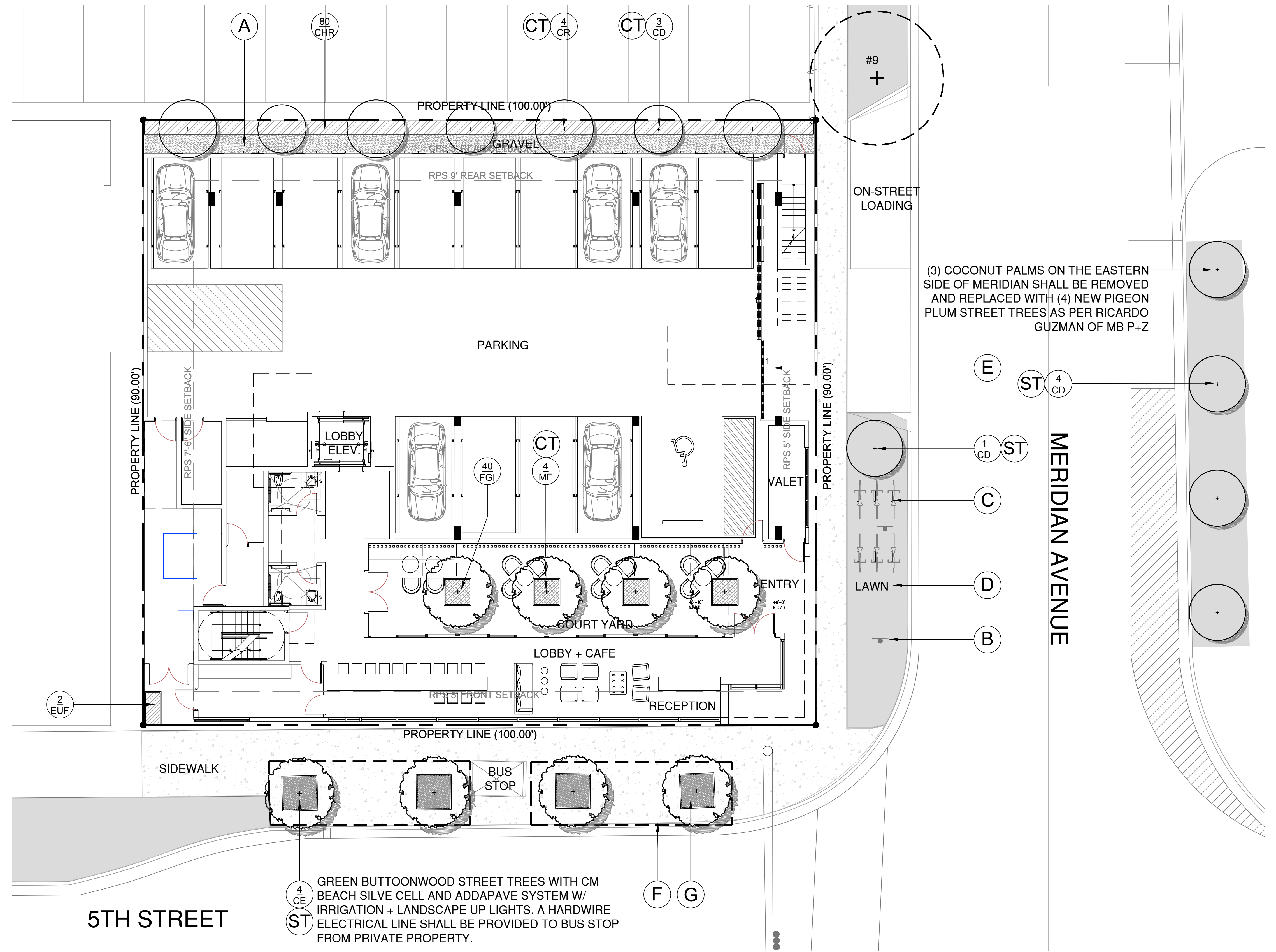
DATE
08.29.17

REVISION
PZ COMMENTS
09.18.17
PZ COMMENTS
09.19.17
SHEET NO.

L-1

THE FIFTH HOTEL
803 FIFTH STREET MIAMI BEACH, FL
HPB LANDSCAPE SUBMITTAL - AUGUST 29, 2017

CHRISTOPHER CAWLEY | CC
LANDSCAPE ARCHITECTURE LLC | LA
Florida Landscape Architecture Business LC 26000460
780 NE 69th Street | Suite 1106 | Miami, FL 33138
T 305.979.1585 | www.christophercawley.com

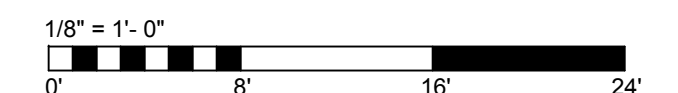


C.M.B. CANOPY MITIGATION NOTES	
THE CANOPY MITIGATION OF 2,039 SF AS REQUIRED BY THE CITY OF MIAMI BEACH, CHAPTER 46 - ENVIRONMENT, DIVISION 2, TREE PRESERVATION and PROTECTION ORDINANCE HAS BEEN MET AND EXCEEDED. A TOTAL 4,000 SF OF CANOPY HAS BEEN PROVIDED.	
CANOPY MITIGATION SUMMARY	
- (4) NATIVE CLUSIA ROSEA TREES: 1,200 SF (MB category I @ 300 SF each)	
- (4) NATIVE GREEN BUTTWOOD TREES: 1,200 SF (MB category I @ 300 SF each)	
- (8) NATIVE PIGEON PLUM TREES: 1,200 SF (MB category II @ 150 SF each)	
- (4) NATIVE SIMPSON'S STOPPER TREES: 400 SF (MB category III @ 100 SF each)	

LANDSCAPE PLAN LEGEND	
(A) 3/8" GRAY DECOMPOSED GRANITE AGGREGATE OVER FILTER FABRIC	(F) SILVACELL SYSTEM
(B) BUS STOP SIGN	(G) MIAMI BEACH ADDAPAVE SYSTEM WITH LANDSCAPE UPLIGHTS + IRRIGATION
(C) BICYCLE RACKS	(ST) STREET TREE
(D) ST. AUGUSTINE FLORATAM - OVER 2" TOPSOIL BED, SEE PLANTING SPECS	(CT) CODE TREE
(E) DECORATIVE SLIDING GATE. REFER TO ARCHITECTURE	

PLANT LIST - 803 FIFTH STREET GROUND LEVEL					
KEY	QTY.	NATIVE	COMMON NAME	BOTANICAL NAME	HEIGHT, SPECIFICATION, & NOTES
TREES					
CD	8	YES	PIGEON PLUM TREE	Coccoloba diversifolia	65 gal, 14-16' ht, 6" spr, 3-4" cal, equal to Treeworld Wholesale
CE	4	YES	GREEN BUTTWOOD TREE	Conocarpus erectus	65 gal, 14-16' ht, 6" spr, 3-4" cal, equal to Treeworld Wholesale
CR	4	YES	PITCH APPLE TREE	Clusia rosea	12' o.a. height min, standard, equal to Treeworld Wholesale
MF	4	YES	SIMPSON STOPPER TREE	Myrcianthes fragrans	200 gallon, standards, equal to Treeworld Wholesale
SHRUBS					
CHR	80	YES	COCO PLUM SHRUB	Chrysobalanus icaco 'Red Tip'	15 gallon, 36" on center
EUF	2	YES	SPANISH STOPPER SHRUB	Eugenia foetida	15 gallon, 36" on center
FGI	40	NO	FICUS GREEN ISLAND	Ficus macrocarpa 'Green Island'	3 gallon, full, space 18" on center

GROUND LEVEL LANDSCAPE PLAN
MIAMI BEACH HISTORIC PRESERVATION BOARD FIRST SUBMITTAL



THE FIFTH HOTEL
803 FIFTH STREET MIAMI BEACH, FL
HPB LANDSCAPE SUBMITTAL - AUGUST 29, 2017

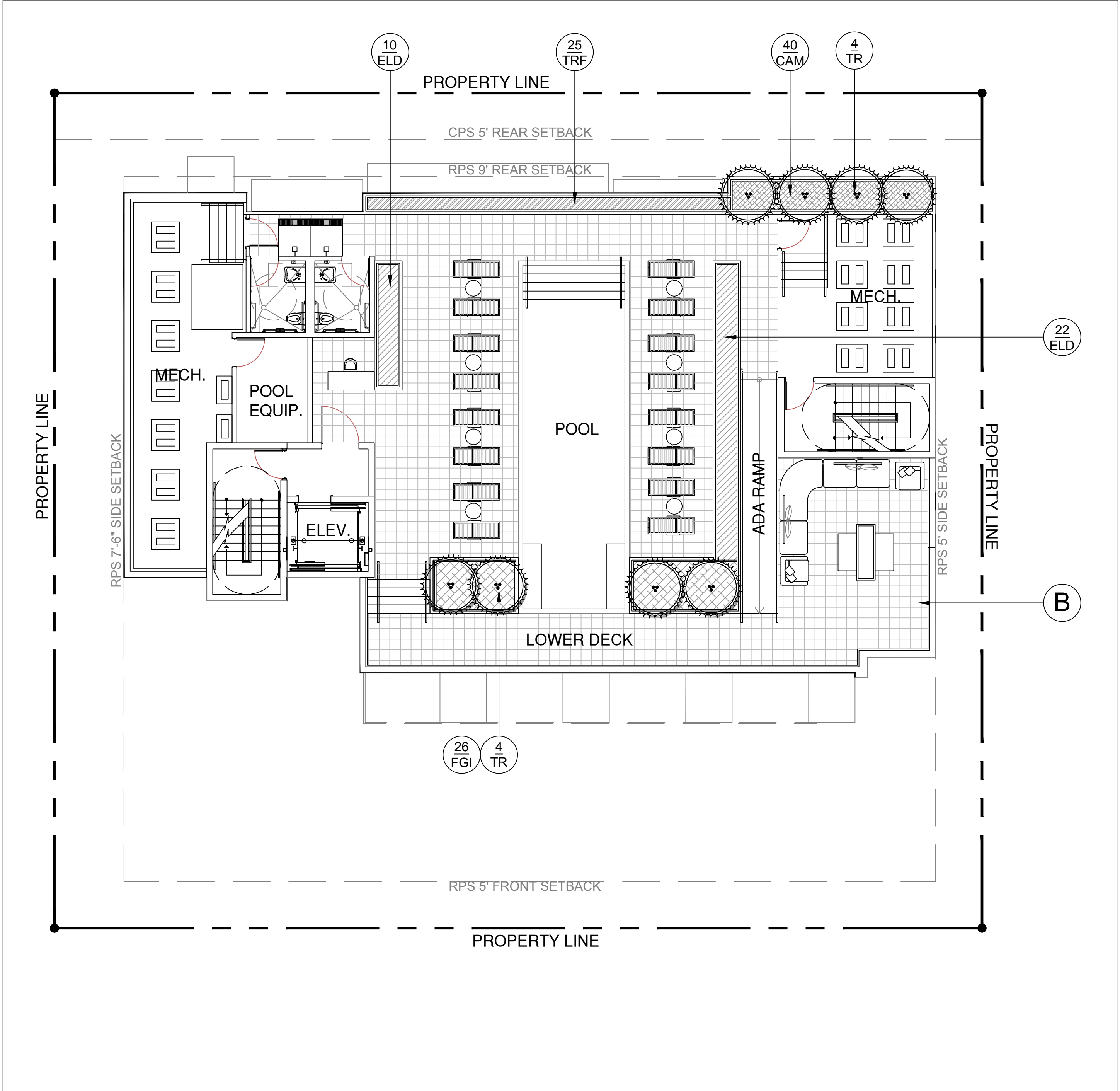
CHRISTOPHER CAWLEY CC
LANDSCAPE ARCHITECTURE LLC LA
Florida Landscape Architecture Business LC 26000460
780 NE 69th Street | Suite 1106 | Miami, FL 33138
T 305.979.1585 | www.christophercawley.com

CHRISTOPHER CAWLEY, RLA
Florida License LA 6966786

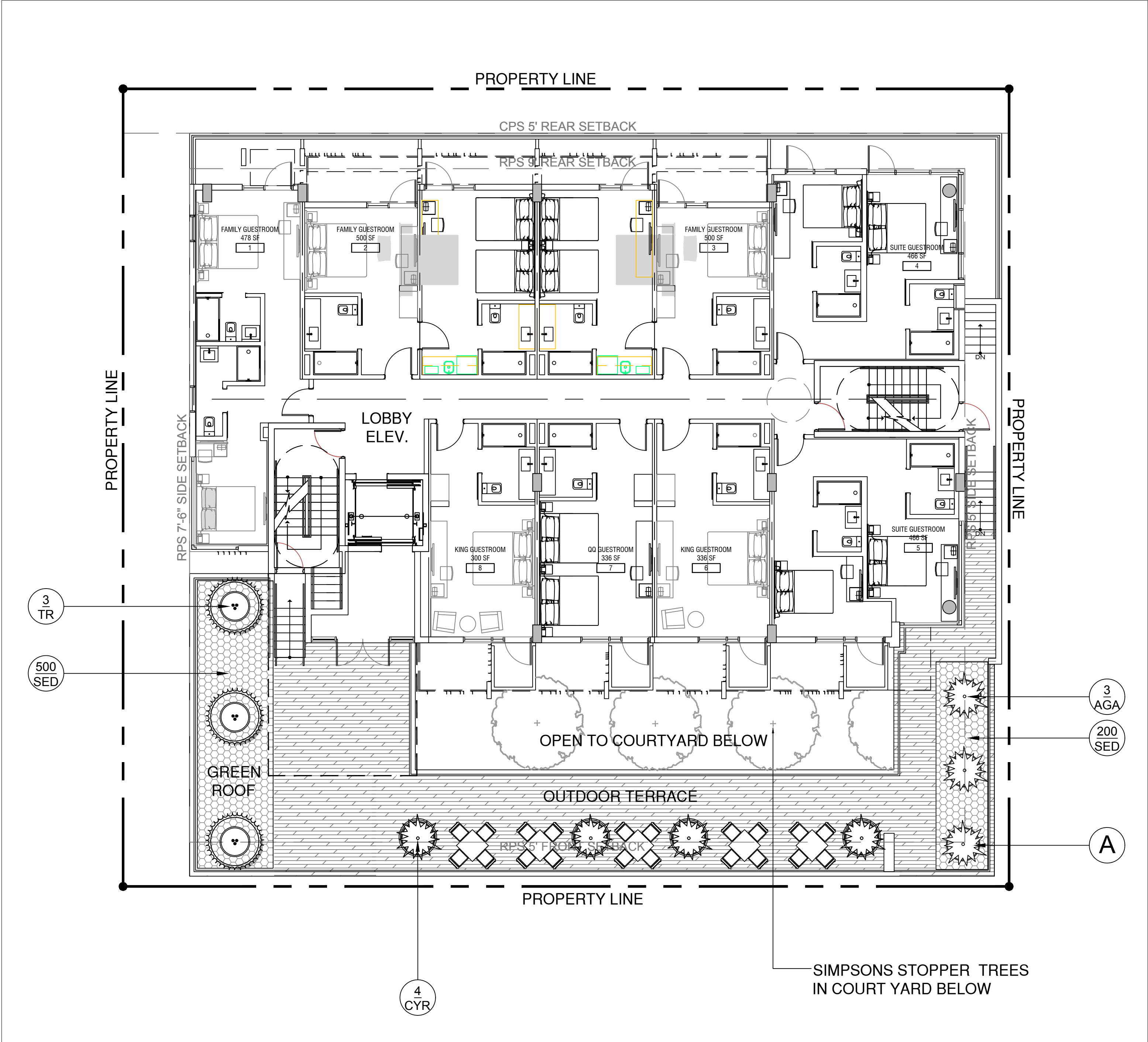
DATE
08.29.17

REVISION
PZ COMMENTS
09.18.17
PZ COMMENTS
09.19.17
SHEET NO.

L-2a



ROOF LANDSCAPE PLAN



SECOND LEVEL LANDSCAPE PLAN

PLANT LIST - 803 FIFTH STREET SECOND LEVEL + ROOF					
KEY	QTY.	NATIVE	COMMON NAME	BOTANICAL NAME	HEIGHT, SPECIFICATION, & NOTES
PALMS					
TR	11	YES	THATCH PALM	Thrinax radiata	3' clear trunk, boots on, full heads
SHRUBS					
ELD	32	NO	JAPANESE BLUEBERRY	Elaeocarpus decipiens	7 gallon, 3' ht min, full, space 18" on center
FGI	26	NO	FICUS 'GREEN ISLAND'	Ficus microcarpa 'Green Island'	3 gallon, 24" on center
GROUNDCOVERS + ACCENTS					
AGA	3	NO	BLUE AGAVE	Agave americana 'Blue'	30" height x 30" spread, full
CAM	40	NO	NATAL PLUM	Carissa macrocarpa	3 gallon, 18" on center, full
CYR	4	NO	KING SAGO	Cycas revoluta	3' height X 3' spread,
SED	700	NO	SEDUM 'ANGELINA'	Sedum rupestre 'Angelina'	1 gallon, 6" on center, full
TRF	20	YES	DWARF FAKAHATCHEE GRASS	Tripsacum floridana	3 gallon, 18" on center, full

- LANDSCAPE PLAN LEGEND**
- A CONTEMPORARY PLANTERS TO BE SELECTED
 - B STONE PAVERS TO BE SELECTED

LANDSCAPE NOTES

- ALL PLANT MATERIAL SHALL BE FLORIDA GRADE NO. 1 OR BETTER.
- CONTRACTOR SHALL BECOME FAMILIAR WITH THE LOCATION OF, AVOID, AND PROTECT ALL UTILITY LINES, BURIED CABLES, AND OTHER UTILITIES.
- TREE, PALM, ACCENT AND BED LINES ARE TO BE LOCATED IN THE FIELD AND APPROVED BY THE LANDSCAPE ARCHITECT PRIOR TO INSTALLATION.
- ALL PLANTING SOIL SHALL BE 50:50 TOPSOIL:SAND MIX, FREE OF CLAY, STONES, ROCKS, OR OTHER FOREIGN MATTER. THIS SPECIFICATION INCLUDES ALL BACKFILL FOR BERMS AND OTHER LANDSCAPE AREAS.
- THE SITE CONTRACTOR SHALL BE RESPONSIBLE TO BRING ALL GRADES TO WITHIN 2" OF FINAL GRADES. THIS SHALL INCLUDE A 2" APPLICATION OF 50:50 TOPSOIL:SAND MIX FOR ALL LANDSCAPE AND AREAS TO BE SODDED.
- ALL PLANTING BEDS SHALL BE MULCHED TO A DEPTH OF 2" WITH A SMALL GRAY GRANITE AGGREGATE FREE FROM WEEDS AND PESTS. NO 'CYPRESS MULCH' OR 'RED DYED MULCH' TO BE ACCEPTED. KEEP MULCH 3" AWAY FROM TREE OR PALM TRUNKS AS PER INDUSTRY RECOMMENDATIONS.
- SOD SHALL BE ST AUGUSTINE GRASS IN ALL LAWN AREAS AS SHOWN ON THE PLANS. SOD SHALL BE STRONGLY ROOTED, FREE FROM WEED, FUNGUS, INSECTS AND DISEASE. CONTRACTOR SHALL SOD ALL AREAS AS INDICATED ON THE PLANS OR AS DIRECTED. PAYMENT SHALL BE DETERMINED BY THE TOTAL MEASURED SODDED AREAS X THE UNIT PRICE SUBMITTED AND FIELD VERIFIED. SOD SHALL CARRY A 5-MONTH WARRANTY.
- ALL TREES, PALMS, SHRUBS AND GROUNDCOVERS, AND SOD / LAWN SHALL CARRY A ONE-YEAR WARRANTY FROM THE DATE OF FINAL ACCEPTANCE.
- IRRIGATION SHALL PROVIDE FOR A 100% COVERAGE WITH 50% OVERLAP MINIMUM AND BE PROVIDED BY A FULLY AUTOMATIC IRRIGATION SYSTEM W/ RAIN MOISTURE SENSOR ATTACHED TO CONTROLLER. ALL FLORIDA BUILDING CODE APPENDIX "F" IRRIGATION REQUIREMENTS SHALL BE STRICTLY ADHERED TO FOR INSTALLATION AND PREVAILING WATER MANAGEMENT DISTRICT RESTRICTIONS AND REGULATIONS SHALL BE IN COMPLIANCE FOR POST-INSTALLATION WATERING SCHEDULES.

LANDSCAPE LEGEND

MIAMI BEACH LANDSCAPE ORDINANCE CHAPTER 26 (RS1 - RS4 Single Family Home Residential)

ZONING: CPS-2 LOT SIZE: 9,000 SF ACRES: .20

TREE REQUIREMENT
9,000 SF = 20 ACRES X 22 = 4.4 OR 5 TOTAL TREES REQUIRED / 11 TREES PROVIDED ON GROUND LEVEL
(4 NATIVE CLUSIA ROSEA TREES + 3 NATIVE PIGEON PLUM TREES + 4 NATIVE SIMPSONS STOPPER TREES PROVIDED)

DIVERSITY REQUIREMENT
1 - 5 REQUIRED TREES = 2 TREE SPECIES REQUIRED / 3 SPECIES PROVIDED

NATIVE TREES
30% OF REQUIRED TREES OR .30 X 5 = 1.5 OR 2 NATIVE TREES REQUIRED / 11 NATIVE TREES PROVIDED
(4 NATIVE CLUSIA ROSEA TREES + 3 NATIVE PIGEON PLUM TREES + 4 NATIVE SIMPSONS STOPPER TREES PROVIDED)

LOW MAINTENANCE TREES
50% OF REQUIRED TREES OR .50 X 5 = 2.5 OR 3 NATIVE TREES REQUIRED / 11 LM TREES PROVIDED
(4 NATIVE CLUSIA ROSEA TREES + 3 NATIVE PIGEON PLUM TREES + 4 NATIVE SIMPSONS STOPPER TREES PROVIDED)

STREET TREE REQUIREMENT
AVERAGE STREET TREE SPACING 20' ON CENTER
MERIDIAN AVENUE: 100 LF / 20 = 5 STREET TREES REQ / 4 NEW PIGEON PLUM STREET TREES PROVIDED
5TH STREET: 100 LF / 20 = 5 STREET TREES REQ / 4 NEW GREEN BUTTWOOD STREET TREES PROVIDED

SHRUBS
12 SHRUBS (OR VINES) REQUIRED FOR EACH REQUIRED LOT AND STREET TREE or 12 X (15) = 180 REQUIRED / 184 SHRUBS PROVIDED. (80 NATIVE COCOPLUM SHRUBS + 6 NATIVE SPANISH STOPPER SHRUBS + 66 FICUS GREEN ISLAND SHRUBS + 32 JAPANESE BLUEBERRY SHRUBS PROVIDED)

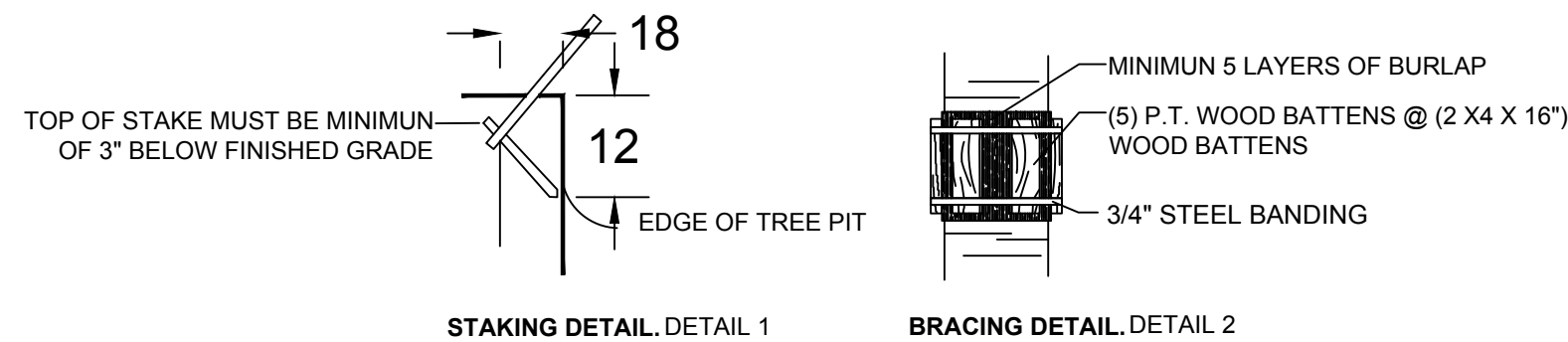
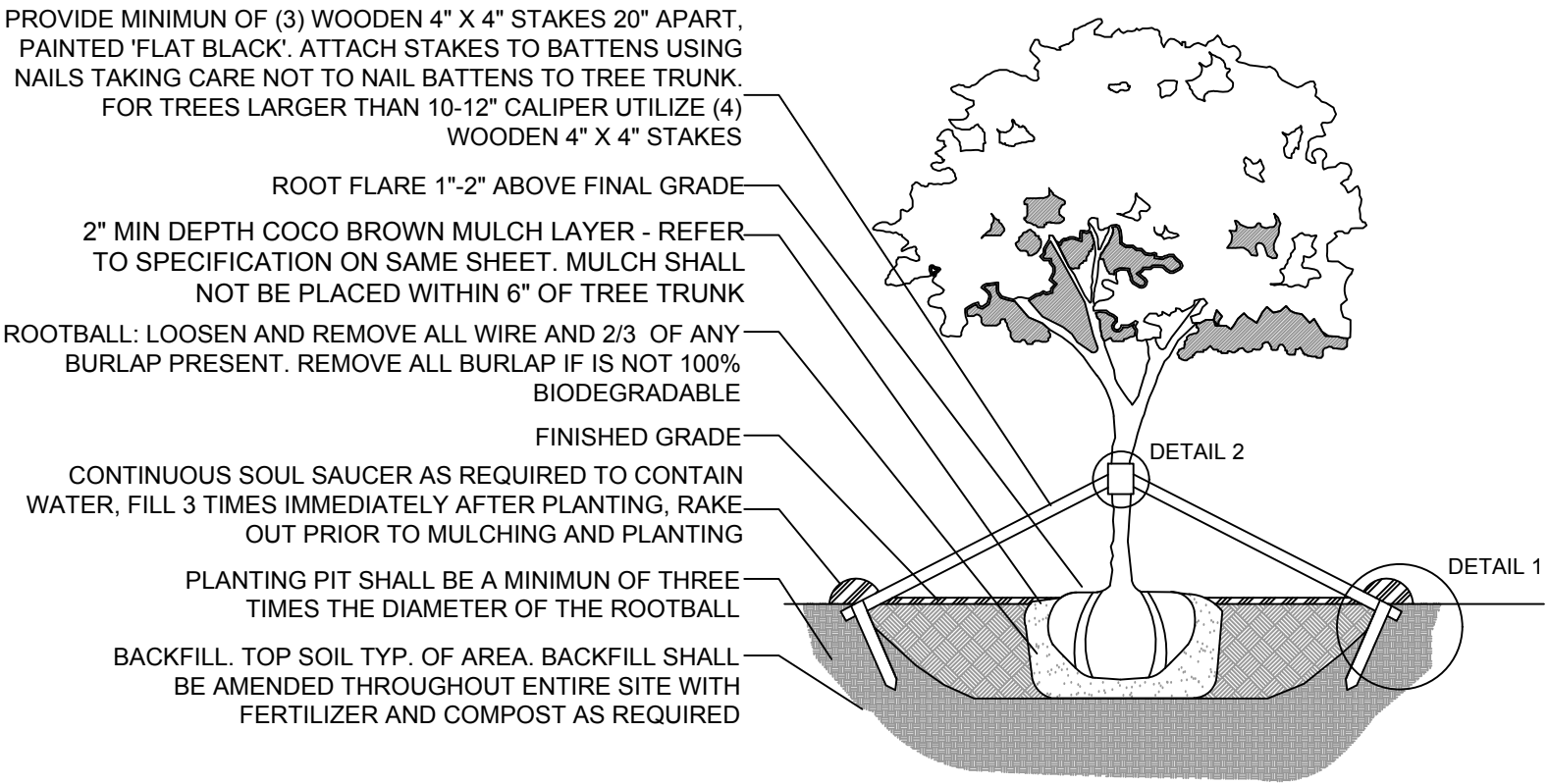
NATIVE SHRUBS
50% OF TOTAL SHRUBS REQUIRED MUST BE NATIVE or .50 X 168 = 84 / 86 NATIVE SHRUBS PROVIDED
(80 NATIVE COCOPLUM SHRUBS + 6 NATIVE SPANISH STOPPER SHRUBS PROVIDED)

LARGE SHRUBS / SMALL TREES
10% OF TOTAL SHRUBS REQUIRED MUST BE LARGE SHRUBS OR SMALL TREES or .10 X 168 = 16.8 / 86 LARGE SHRUBS PROVIDED (80 NATIVE COCOPLUM SHRUBS + 6 NATIVE SPANISH STOPPER SHRUBS PROVIDED)

NATIVE LARGE SHRUBS / SMALL TREES
50% OF TOTAL LARGE SHRUBS REQUIRED MUST BE NATIVE or .50 X 17 = 8.5 / 9 NATIVE SHRUBS REQUIRED / 86 NATIVE LARGE SHRUBS PROVIDED(80 NATIVE COCOPLUM SHRUBS + 6 NATIVE SPANISH STOPPER SHRUBS PROVIDED)

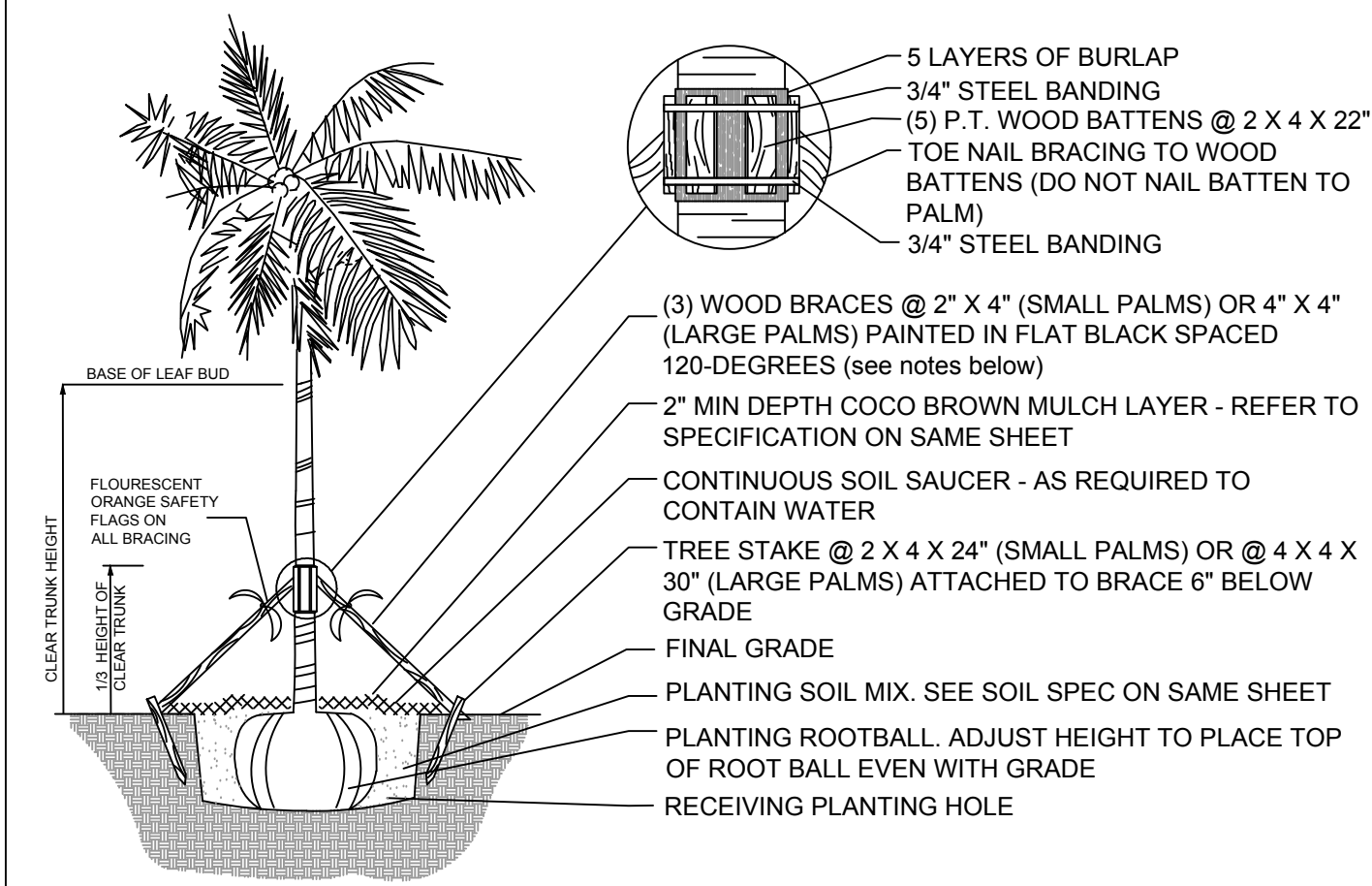
LAWN AREA
50% MAXIMUM OF LANDSCAPE AREA: NEW LAWN AREAS ARE LESS THAN 50% OF LANDSCAPE AREA

IRRIGATION SYSTEM
100% COVERAGE PROVIDED PURSUANT TO MIAMI DADE CODE



C.M.B. LARGE TREE PLANTING DETAIL

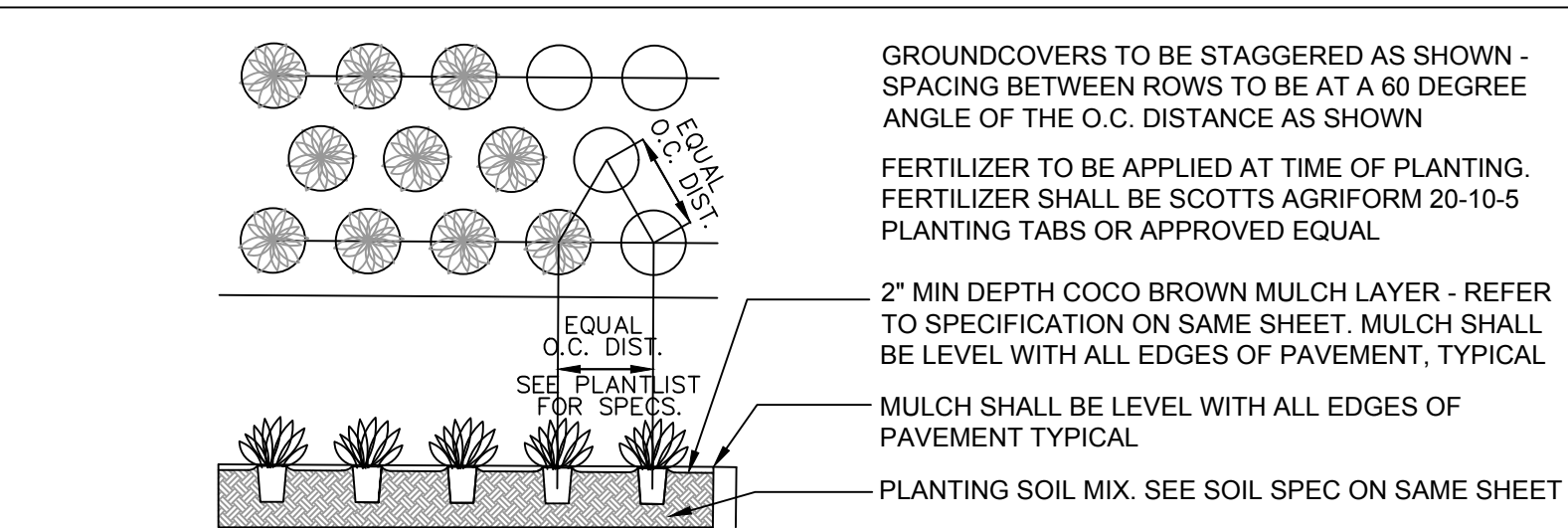
N.T.S.



- NOTES:
- PALMS OVER 30' GW HEIGHT, USE MINIMUM (4) 4" X 4" BRACING AND STAKES
 - PRIMARY STAKES SHOULD BE PLACED PARALLEL TO WALKWAYS WHENEVER POSSIBLE
 - RECEIVING PLANTING HOLE SHALL BE APPROXIMATELY 1/3 LARGER THAN ROOTBALL
 - BUD SHALL BE PERPENDICULAR TO THE GROUND PLANE
 - NO SCARRED OR BLACKENED TRUNKS
 - AMENDED SOIL MIX TO BE ADDED AT THE TIME OF PLANTING NEEDED, SHALL CONSIST OF ATLAS PEAT + SOIL MIX 7036 (COARSE SAND, CANADIAN PEAT, CYPRESS DUST + PERLITE MIX)

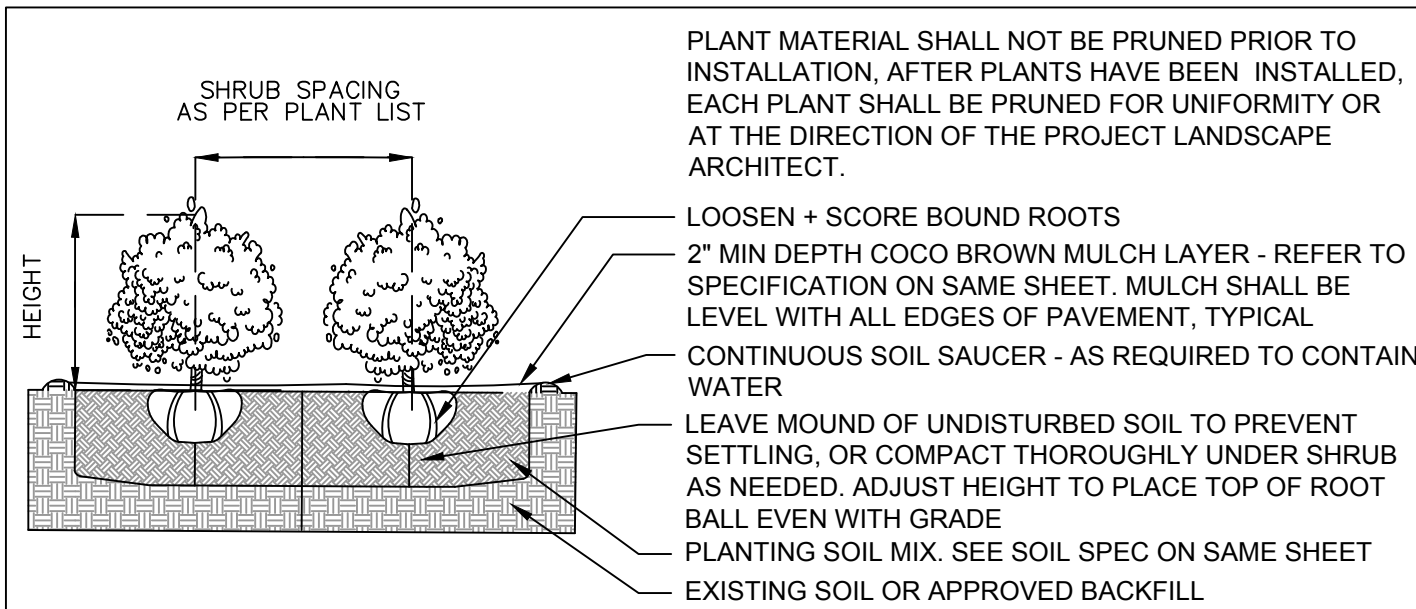
C.M.B. PALM PLANTING DETAIL

N.T.S.



GROUNDCOVER PLANTING DETAIL

N.T.S.



SHRUB PLANTING DETAIL

N.T.S.



MF / SIMPSONS STOPPER



TR / FLORIDA THATCH PALMS



CR / CLUSIA ROSEA TREE



CD / PIGEON PLUM TREE

THE FIFTH HOTEL
803 FIFTH STREET MIAMI BEACH, FL
HPB LANDSCAPE SUBMITTAL - AUGUST 29, 2017

CHRISTOPHER CAWLEY | CC | LA
LANDSCAPE ARCHITECTURE LLC
Florida Landscape Architecture Business LC 26000460
780 NE 69th Street | Suite 1106 | Miami, FL 33138
T 305.979.1585 | www.christophercawley.com

CHRISTOPHER CAWLEY, RLA
Florida License LA 6966786

DATE
08.29.17
REVISION
P2 COMMENTS
09.19.17

SHEET NO.

L-4a



CHR / RED TIP COCOPLUM LEAF DETAIL



MF / SIMPSONS STOPPER BARK DETAIL



CYR / KING SAGO



AGA / BLUE AGAVE



TRF / DWARF FAKAHATCHEE GRASS



AGR / DECOMPOSED GREY GRAVEL AGGREGATE



EUF / SPANISH STOPPER SHRUB



SED / SEDUM 'ANGELINA'



ELD / JAPANESE BLUEBERRY



MF / SIMPSONS STOPPER TREE FLOWER DETAIL



CAM / DWARF CARISSA



FGI / FICUS GREEN ISLAND