





City of Miami Beach
Procurement Department
1755 Meridian Ave., 3rd Floor
Miami Beach, FL 33139

725 92nd Street
Surfside, FL 33154
phone: (305) 283-6391
www.velosolutions.com

October 12, 2017

Re: RFLI 2018-019-WG Outdoor Skate Park

Dear Mr. William Garviso and Members of the Selection Committee:

On behalf of Velosolutions, I am pleased to submit this letter of interest for the creation of a temporary skate park in Miami Beach, FL. We are excited that your city has made this proactive decision to provide such a valuable facility. Our team is focused on creating high-quality riding environments and is passionate about the aesthetic value of our designs. We will design a park that has broad-based appeal to users of all ages, abilities, and interests.

Skateparks are currently experiencing a rapid design evolution and we are pleased to be at the forefront of this movement. Our team is a leader in innovative paved park design - specializing in detailed, ready-for-bid construction drawings with us attached as on site managers.

Velosolutions has designed and built over 100 paved parks throughout North America, Europe, and Asia providing unique designs that are now internationally renowned and respected by the industry's top skateboarders, mountain bikers, BMXers, longboarders, and inline skaters.

We carefully calculate park aesthetics with detailed grading, irrigation, and drainage solutions.

WE ARE SUBMITTING 3 OPTIONS FOR YOU TO CHOOSE FROM.

I will oversee all aspects of the project as Principal-in-Charge.

Sincerely yours,

Jonathan Strauss

Jonathan Strauss



1. Velosolutions USA LLC
2. 725 92nd Street Surfside, FL 33154
3. www.velosolutions.com
4. Jonathan Strauss
5. 305-283-6391
6. jonathan.strauss@velosolutions.com
7. Client List
 - a. Kanab City, Utah
 - b. Oklahoma City Boathouse Foundation, OK
 - c. Mr. David Carr, Bakersfield, CA
 - d. Blue Lotus Foundation, Leavenworth, WA
 - e. City of Pineville, MO
 - f. Two Trees Development, Brooklyn, NY
 - g. Sunny Isles Beach, FL

Product Information

Velosolutions is the world leader in paved pumptrack construction. Our company also built the first ever Pumptrack/Skatepark hybrid in Kanab, UT. We are proposing two options:

1. Traditional Velosolutions Pumptrack which only requires the use of asphalt, dirt, crushed rock, soil, and sod.
2. Omni Park and Lot 11 inspired Urban Skate Plaza featuring Quarterpipes, Rails, Ledges, Boxes, Jersey Barriers and stares as shown in rendering and photos. Materials to be used will be Black Steel Coping, #3 Rebar, 6" Chicken Wire for flat areas, 4" thick shotcrete 4000 PSI, 4" thick Grey Concrete 4000 PSI. The park will be a custom pour in place standard skatepark.
3. Lumberjack Series Modular Pumptrack from BikeParkitect (Used: 2 years old) The Lumberjack series has a substructure that is made from a marine grade lumber and is topped with our ultra grip composite surface. This surface has a texture to it that means that you can ride no matter what Mother Nature throws at you. Because of the modular design it can easily be rearranged or added to at anytime. It is easily stored, setup, and transported.

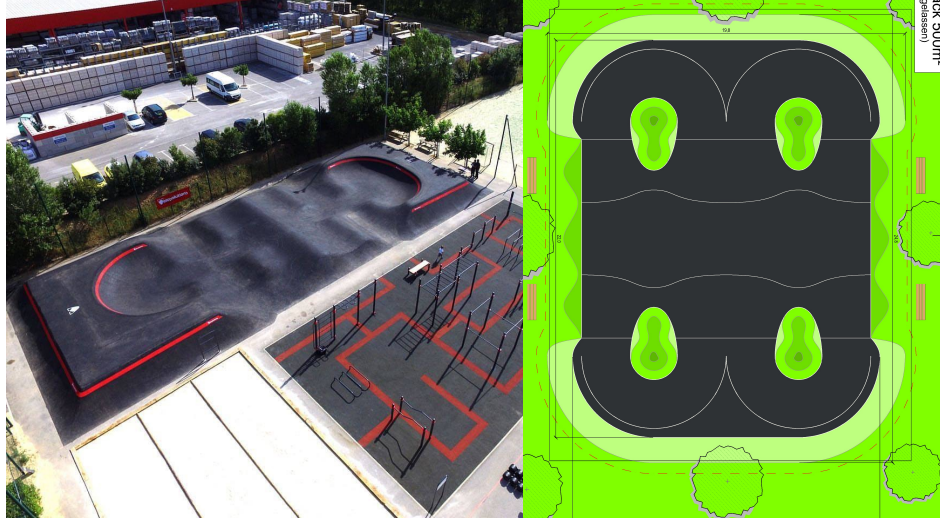
Additional Materials for the first 2 options:

- The entry way to the park will be a 6 foot ADA accessible crushed Limestone pathway to a viewing area.
- A Pressure Treated Split Rail Fence to allow for residents to appreciate the beauty of the park.



Photos and Renderings:

Option 1
SKATE FLOW PARK (Velosolutions pumptrack)

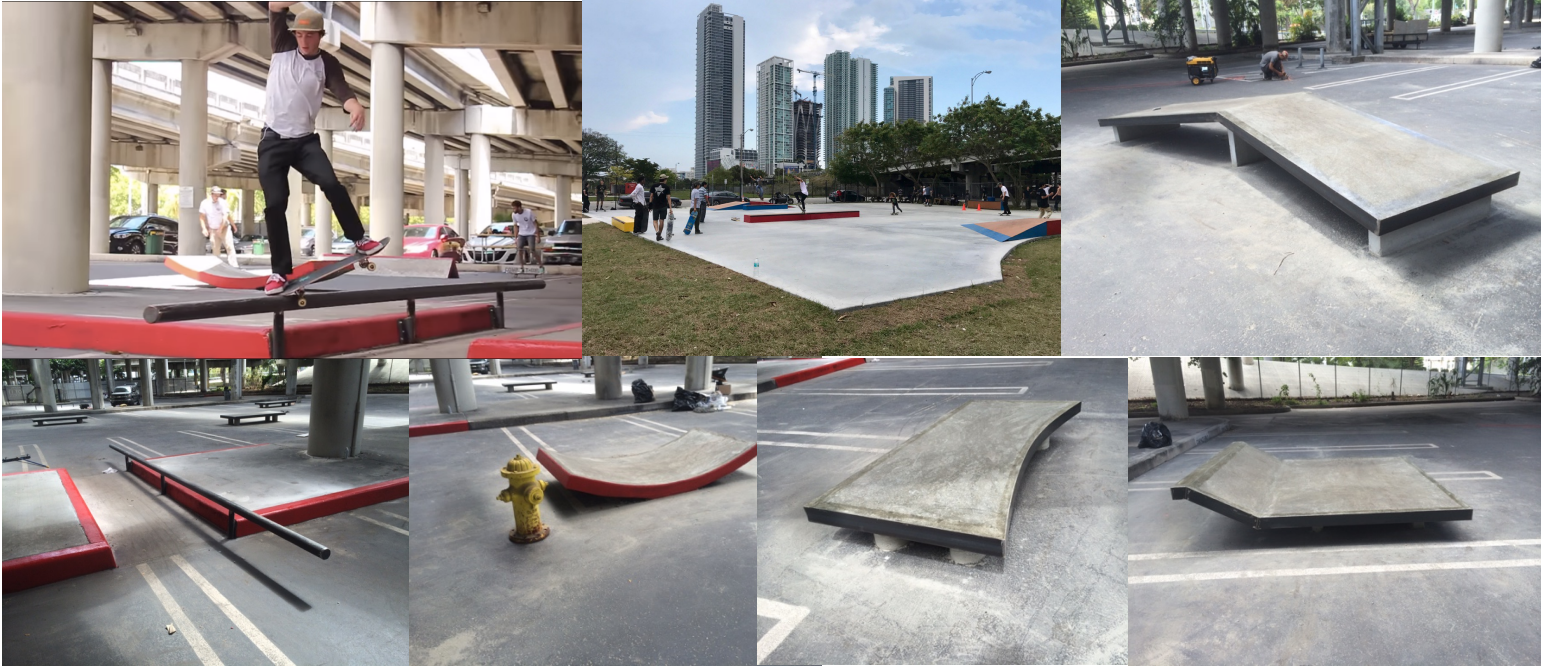


Miami Beach Pop Up Proposal

<i>Description</i>	<i>Unit</i>	<i>Qty</i>	<i>Unit Price</i>	Sq. ft.
Size of the Park				7,500
Velosolutions Planning and Design (Includes Engineering)			\$7,500.00	
Velosolutions Construction (6 people / 10 days)			\$24,000.00	
Materials (gravel, dirt, fill, asphalt, drainage, concrete, etc)			\$29,000.00	
Specific tools and machinery rental			\$3,500.00	
Landscaping/Fence			\$6,000.00	
Accommodation and Transportation of the crew			\$5,000.00	
Total			\$75,000.00	



Option 2
Omni Park Inspired Skatepark Pour in Place Skatepark



Miami Beach Pop Up Proposal

<i>Description</i>	<i>Unit</i>	<i>Qty</i>	<i>Unit Price</i>	<i>Sq. ft.</i>
Size of the Park				7,500
Velosolutions Planning and Design (Includes Engineering)			\$4,500.00	
Velosolutions Construction (6 people / 10 days)			\$24,000.00	
Materials (gravel, dirt, fill, drainage, concrete, etc)			\$35,000.00	
Specific tools and machinery rental			\$2,500.00	
Landscaping/Fence			\$6,000.00	
Accommodation and Transportation of the crew			\$3,000.00	
Total			\$75,000.00	



Option 3
Used Modular pumptrack system

Cost: \$50K



(Actual track being sold)

Miami Beach Pop Up Proposal

<i>Description</i>	<i>Unit</i>	<i>Qty</i>	<i>Unit Price</i>	<i>Sq. ft.</i>
Size of the Park				5832
Track Market Price (\$106,000)			\$39,500	
Shipping			\$500.00	
Velosolutions Construction (2 people /4 days)			\$4000	
Landscaping/Fence			\$6,000.00	

Additional Information

- Prepare Letter of Intent (LOI) indicating a \$75,000 park build as enclosed. Submit selection and deposit as described within.
- Construction/Permitting documents prepared within 3 weeks of LOI submittal.
- Prepare Construction Agreement as sample enclosed. Upon signing and permitting approval, park will be ready within 1 month.
- Significant discount offered for Used skatepark in Option 3.



References

1. Mike Knopf – Executive Director Oklahoma City Boathouse Foundation, 725 S Lincoln Blvd Oklahoma City, OK 73129 (405) 552-4040 mknopp@okcbf.org
2. Joe Decker – City Manager, 26 North 100 East Kanab City Utah (435)-689-1577
3. Chris Booher – Executive Director Blue Lotus Foundation, PO Box 4874 Jackson, WY 83001, (206)-375-3997 info@bluelotusfoundation.org
4. Marina Trejo – Two Trees Development, 45 Main Street Ste 602 Brooklyn, NY11201, (718) 222-2500, mtrejo@twotreesny.com
5. Melissa Zeiman – City Clerk 503 Main Street Pineville, MO 64856 (417) 223-4368 m.ziemianin@pinevillemo.us
6. David Carr – Available Upon Request