

BARRICADES, INC.  
7904 N.W. 67 Street  
Miami, FL 33155

**FDOT** This Certifies that Scott D. Brown  
Has Completed a Florida Department of Transportation Approved  
Temporary Traffic Control (TTC) Advanced (Refreshed) Course.  
Date Expired: 06/12/2021 Certificate # 20708  
Instructor: Richard Cabrera FDOT Provider # 37

**ATSSA**  
Phone: 540-886-1701  
12 Riverside Parkway Ste. 100  
Friedrichsburg, VA  
www.atssa.com  
donna.carr@atssa.com

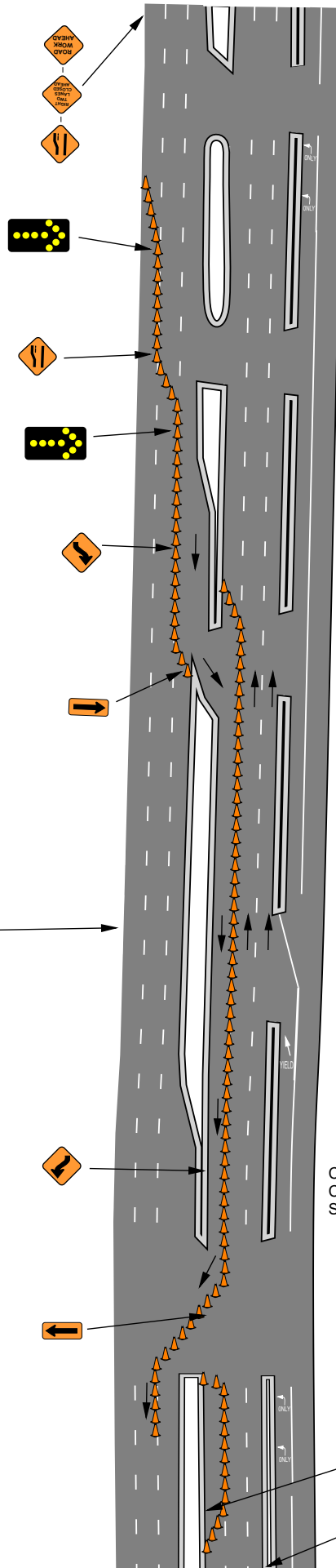
**ATSSA**  
SAFER BARRELS SAFE LIVES

AMERICAN CRIME STORY  
5220 COLLINS AVE

5300 BLK COLLINS AVE

5220 COLLINS AVE

5200 BLK COLLINS AVE

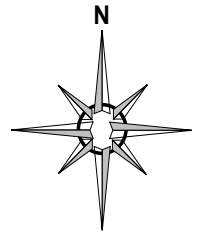


**Legend**

- Arrowboard
- Cone

NOT TO SCALE

www.invarion.com



COLLINS AVE

**Table I**  
Device Spacing

Speed (mph)	Max. Distance Between Devices (ft.)			
	Cones or Tubular Markers		Type I or Type II Barricades or Vertical Panels or Drums	
	Taper	Tangent	Taper	Tangent
25	25	50	25	50
30 to 45	25	50	30	50
50 to 70	25	50	50	100

**Table II**  
Buffer Space and Taper Length

Speed (mph)	Buffer Space (ft)	Taper Length (12' Lateral Transition)	
		L (ft)	Notes (Merge)
25	155	125	L = WS <sup>2</sup> / 60
30	200	180	
35	250	245	
40	305	320	
45	360	540	
50	425	600	L = WS
55	495	660	
60	570	720	
65	645	780	
70	730	840	

When Buffer Space cannot be attained due to geometric constraints, the greatest attainable length shall be used, but not less than 200 ft.

For lateral transitions other than 12', use formula for L shown in the notes column.

Where:

L = Length of taper in feet

W = Width of lateral transition in feet

S = Posted speed limit (mph)

**DISTANCE BETWEEN SIGNS**

Speed	Spacing (ft.)	
	A	B
40 mph or less	200	200
45 mph	350	350
50 mph or greater	500	500

CONTRACTOR SHALL INSTALL AND MAINTAIN TRAFFIC CONTROL DEVICES IN ACCORDANCE WITH FDOT DESIGN STANDARD INDEX 600 AND THE MUTCD (LATEST EDITION)