



FRONTAGE TOTALS:

1. FISHER ISLAND HOLDINGS LLC (Combined)

2. FLORIDA POWER & LIGHT

3. CITY OF MIAMI BEACH

4. MIAMI BEACH PORT LLC

5. FISHER ISLAND COMMUNITY ASSOCIATION, INC

6. UNITED STATES COAST GUARD
- 193.72 LINEAR FEET

- 609.50 LINEAR FEET

- 98.79 LINEAR FEET

- 105.86 LINEAR FEET

- 118.22 LINEAR FEET

- 0 LINEAR FEET (NO FRONTAGE)

TOTAL - 1126.09 LINEAR FEET

FLORIDA POWER & LIGHT + MIAMI BEACH PORT - 715.36 / 1126.09 = 63.53%



NOTES:

- 1) THIS SURVEY WAS PREPARED FOR THE EXCLUSIVE USE OF THE ENTITIES NAMED HEREON. THE ATTACHED CERTIFICATION DOES NOT EXTEND TO ANY UNNAMED PARTIES.
- 2) THIS SKETCH REPRESENTS A "SPECIFIC PURPOSE SURVEY" TO SHOW THE LINEAR FEET OF FRONTAGE OF THE VARIOUS PARCELS OF LAND LOCATED ON TERMINAL ISLAND FRONTING MacARTHUR CAUSEWAY (STATE ROAD A-1-A). THIS IS NOT A "BOUNDARY SURVEY."

CERTIFICATION:

I HEREBY CERTIFY:

THE INFORMATION SHOWN ON THIS "SPECIFIC PURPOSE SURVEY" IS TRUE AND CORRECT TO THE BEST OF MY KNOWLEDGE AND BELIEF AS RECENTLY SURVEYED AND DRAWN UNDER MY SUPERVISION AND DIRECTION. THIS SURVEY COMPLIES WITH THE MINIMUM TECHNICAL STANDARDS ADOPTED BY THE FLORIDA STATE BOARD OF SURVEYORS AND MAPPERS PURSUANT TO CHAPTER 5J-17, FLORIDA ADMINISTRATIVE CODE, AND CHAPTER 472.027, FLORIDA STATUTES.

Schuelke Shiskin & Associates, Inc.

MARK STEVEN JOHNSON, PRINCIPAL  
PROFESSIONAL LAND SURVEYOR #4775  
STATE OF FLORIDA

CERTIFICATE  
OF AUTHORIZATION  
No. LB-87

Schuelke Shiskin & Associates, Inc.  
LAND PLANNERS  
LAND SURVEYORS  
ENGINEERS  
3340 CORPORATE WAY, MIAMI, FLORIDA 33025  
TEL: (954) 435-7010 FAX: (954) 438-3288

Drawn By: DMO  
Date: 03/08/2017

Checked By: M.S.J.  
Date: 03/08/17

Order No. 200816  
F.B. No.: N.A.

Scale: AS SHOWN

File No. AJ-5473  
Sheet 1 of 1  
Sheet(s)

SPECIFIC PURPOSE SURVEY

PREPARED FOR: MIAMI BEACH PORT LLC

LYING AND BEING IN SECTION 4, TOWNSHIP 54 SOUTH, RANGE 42 EAST,  
MIAMI BEACH, MIAMI-DADE COUNTY, FLORIDA.

REVISIONS

Date	Order No.	Field Book	Remarks

FILE NO.

AJ-5473

K:\045442\TERMINAL ISLAND WAIVER\SURVEY\VIEW\TERMINAL ISLAND FRONTAGE EXHIBIT FOR APPLICATION.dwg, 3/8/2017 5:54:22 PM



# Terminal Island

## Miami Beach


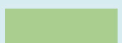
January 05, 2017

# Conceptual Plans



Terminal Island Development Site  
**Level 01 - Proposed City Facilities**



-  City Facilities on Current Level - Not A Part
-  Marina Parking



Level 02 - Proposed City Facilities



- City Facilities on Current Level - Not A Part
- Residential Amenities



Terminal Island Development Site

**Level 03 - City/Condo Parking Deck**





Level 04 - Condo Reception Deck



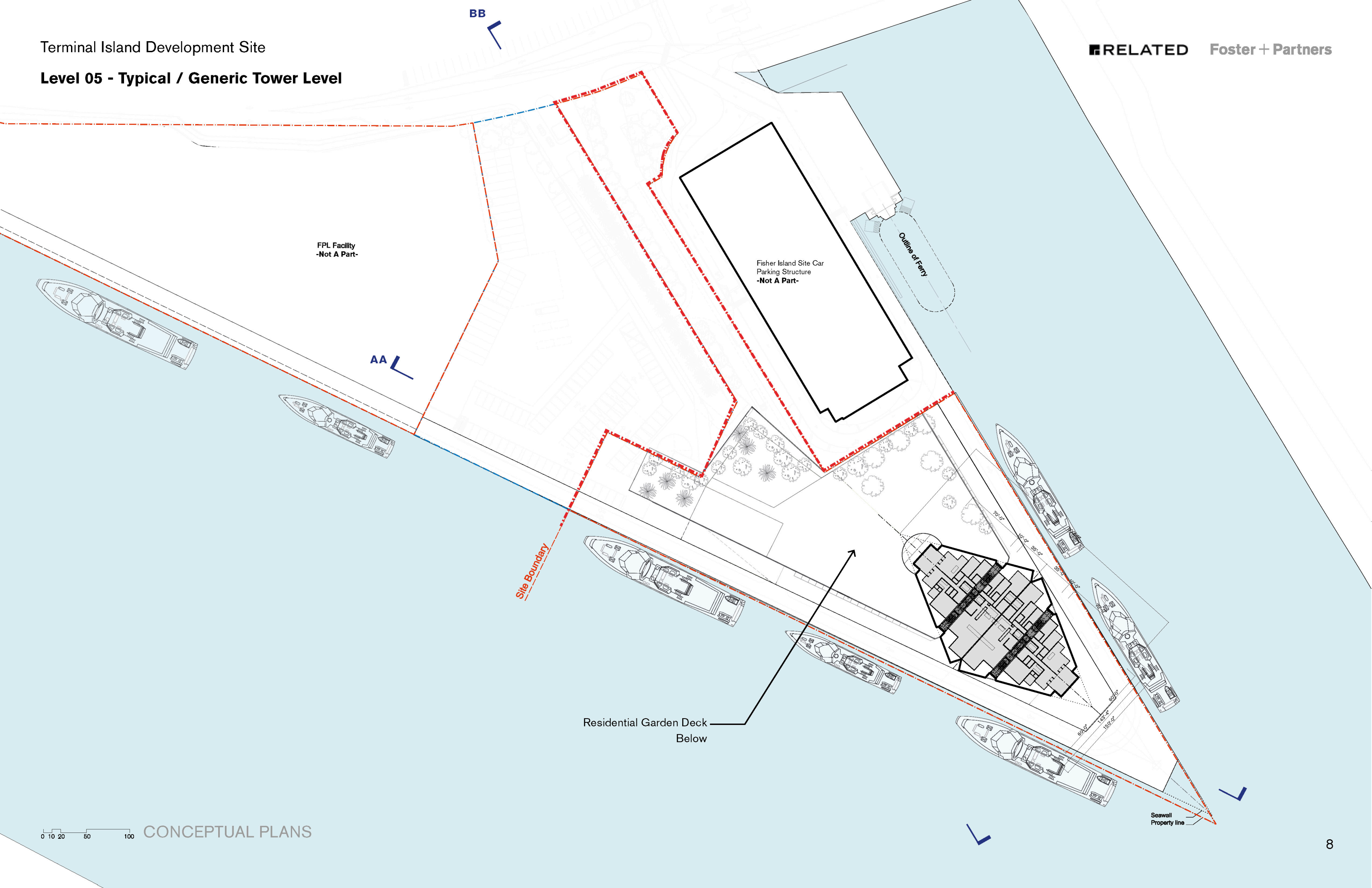


Level 05 - Garden Deck



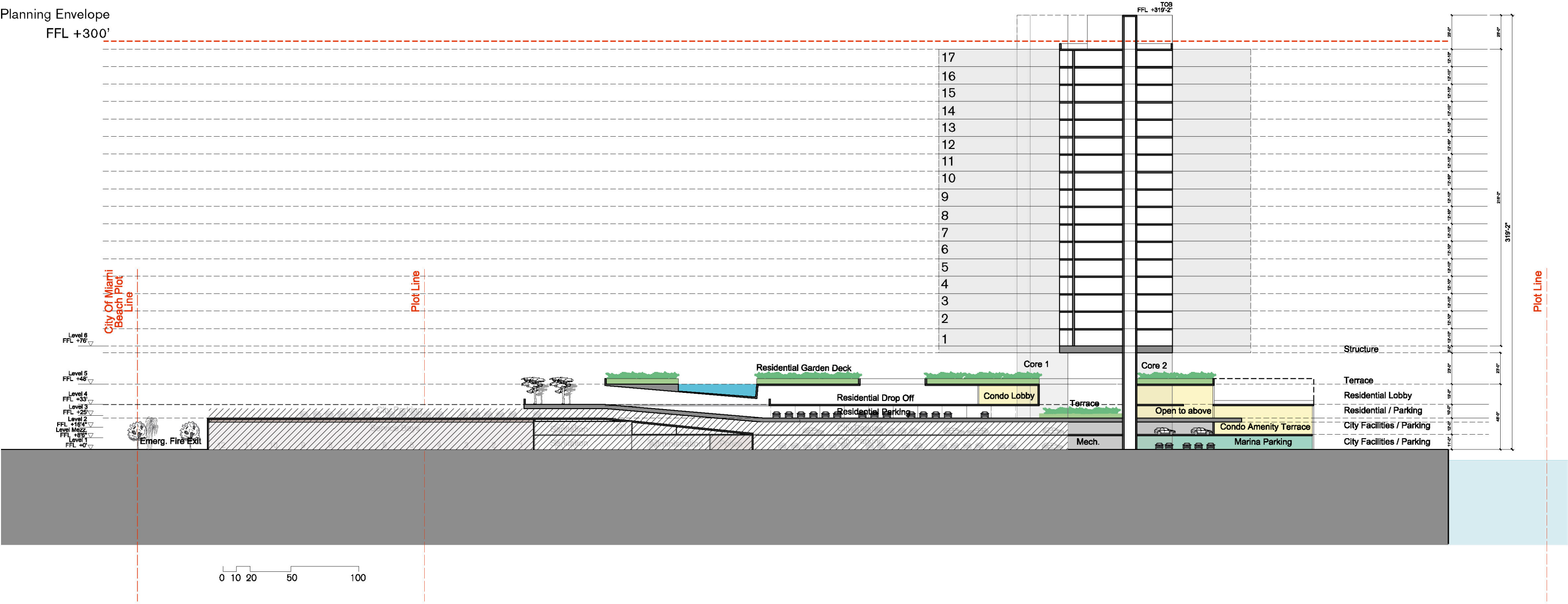


Level 05 - Typical / Generic Tower Level



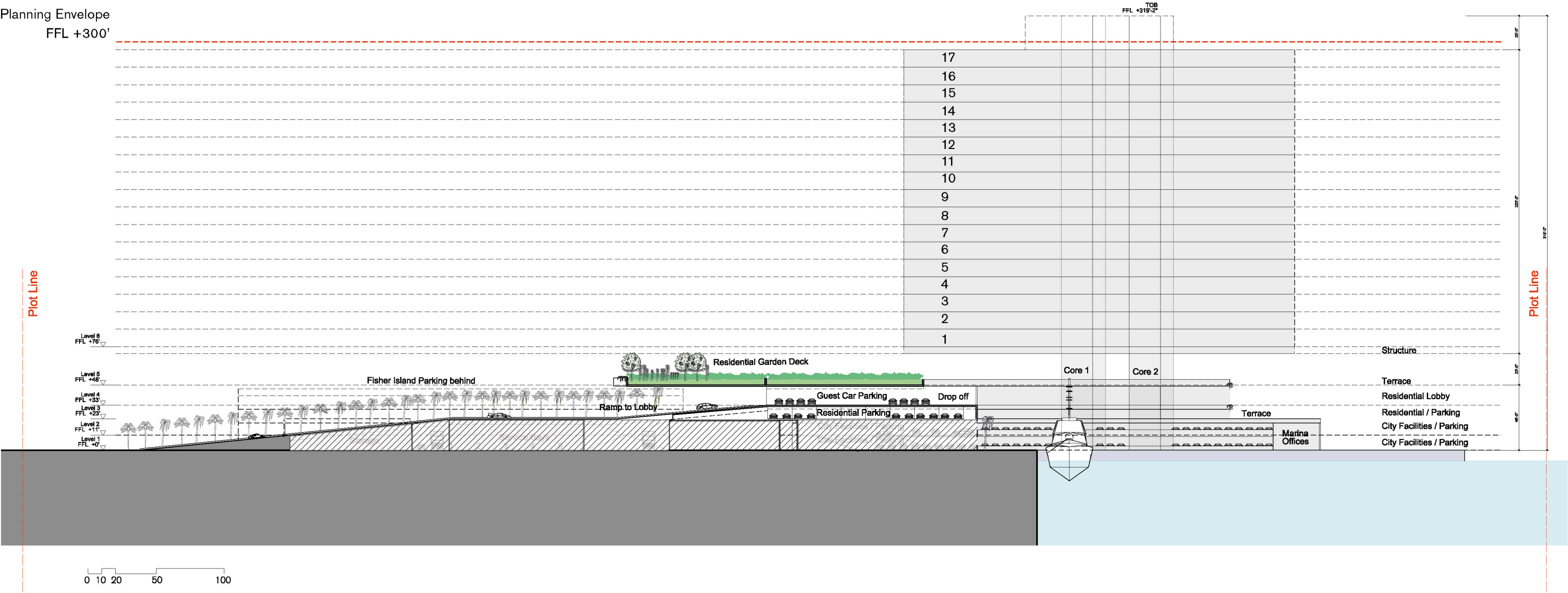


Section AA Through Development Site





Section BB Through Development Site





Massing Diagram of Overall Development

