

MATERIAL LEGEND

- CM-1 GLAZED TILE
- CM-2 PAINTED STUCCO
- AC-1 ARCHITECTURAL CONCRETE - LIGHT
- AC-2 ARCHITECTURAL CONCRETE - DARK
- TC-1 DIMENSIONAL SCREEN CLADDING SYSTEM

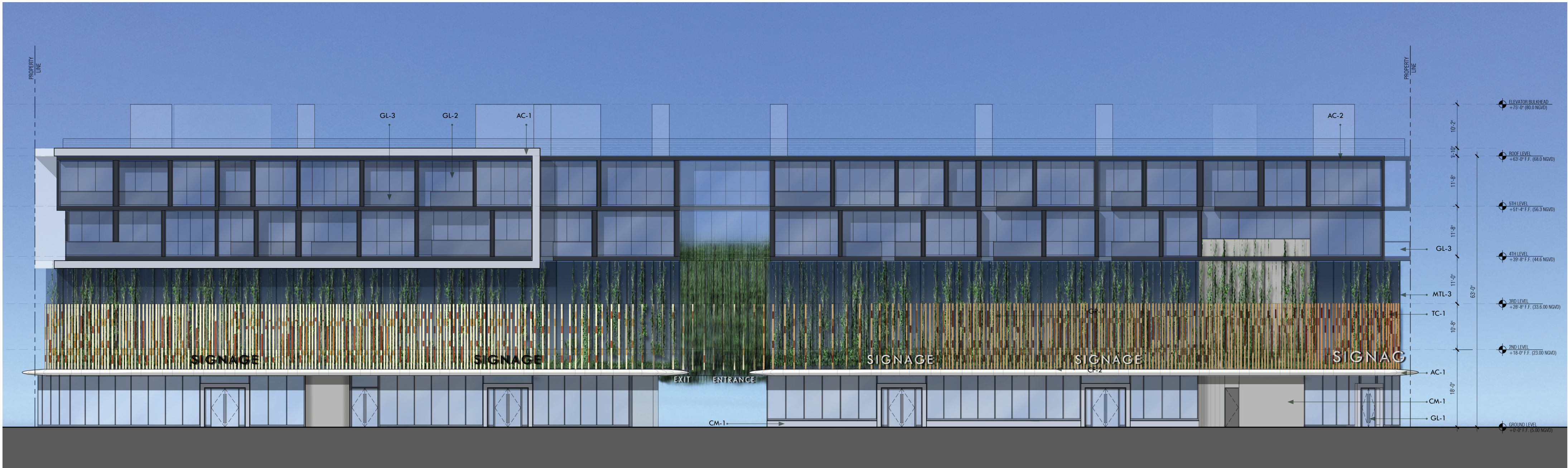
- GL-1 LAMINATED IMPACT GLASS
- GL-2 OPERABLE LAMINATED IMPACT GLAZING
- GL-3 GLASS GUARDRAIL
- MTL-1 BREAK METAL CLADDING - COLORED GUNMETAL
- MTL-2 DARK FINISH METAL GUARDRAIL
- MTL-3 STAINLESS STEEL CABLE

PROPOSED ELEVATION ALTON ROAD
SCALE: 1'-0" = 1/16"



MIXED-USE DEVELOPMENT ON 17TH & WEST AVENUE
MIAMI BEACH, FLORIDA
65 NW 24TH ST, SUITE 108 • MIAMI, FLORIDA • 33127 • REG # AR94099

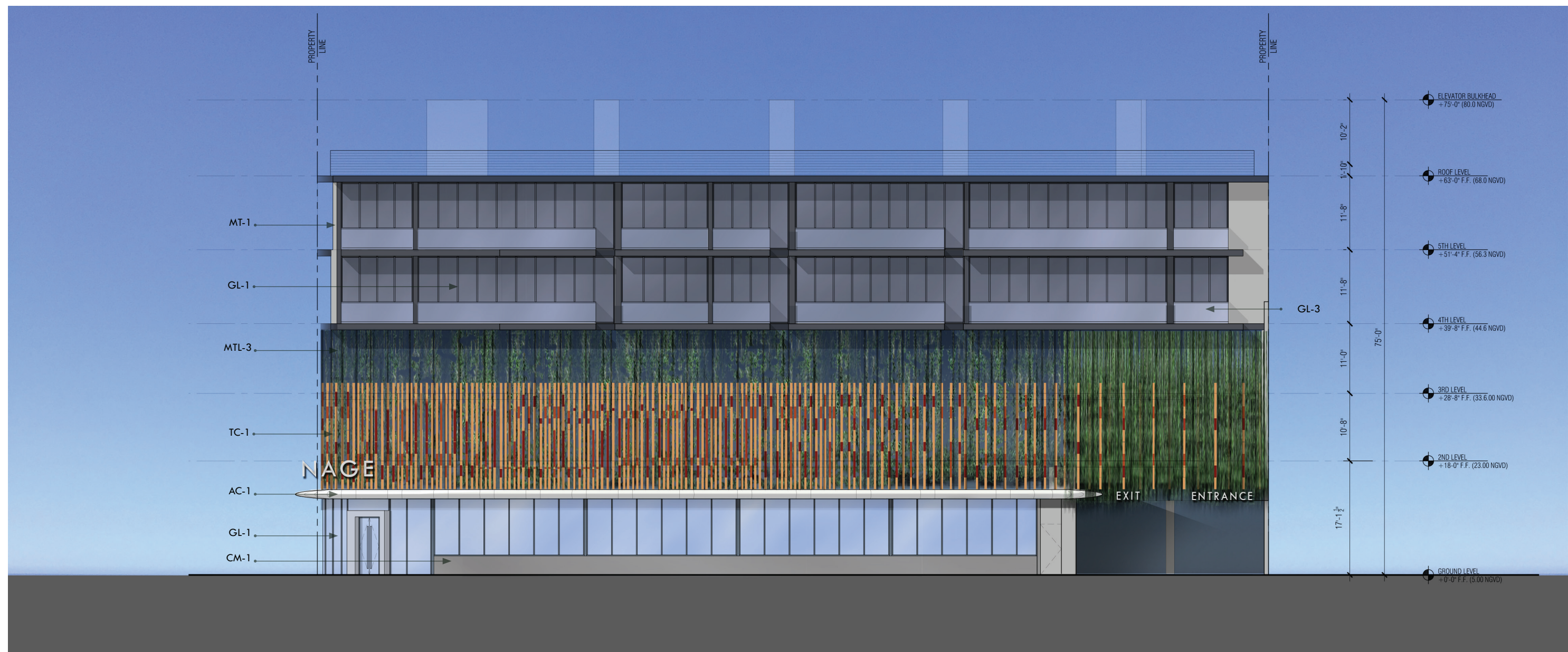
No copies, transmissions, reproductions or electronic manipulation of any portion of these drawings in whole or in part are to be made without the express written permission of Touzet Studio Design & Architecture. All designs indicated in these drawings are property of Touzet Studio Design & Architecture. All copyrights reserved (c) 2015.



MATERIAL LEGEND

- CM-1 GLAZED TILE
CM-2 PAINTED STUCCO
AC-1 ARCHITECTURAL CONCRETE - LIGHT
AC-2 ARCHITECTURAL CONCRETE - DARK
TC-1 DIMENSIONAL SCREEN CLADDING SYSTEM

- GL-1 LAMINATED IMPACT GLASS
GL-2 OPERABLE LAMINATED IMPACT GLAZING
GL-3 GLASS GUARDRAIL
MTL-1 BREAK METAL CLADDING -COLORED GUNMETAL
MTL-2 DARK FINISH METAL GUARDRAIL
MTL-3 STAINLESS STEEL CABLE

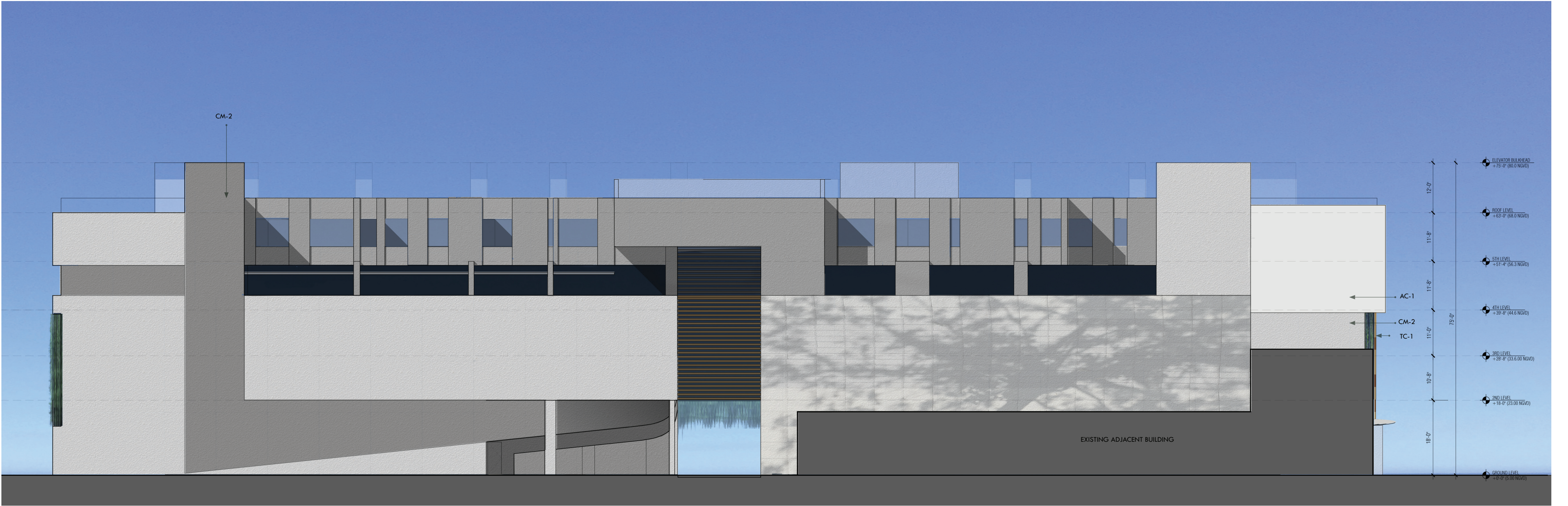


MATERIAL LEGEND

CM-1 GLAZED TILE
 CM-2 PAINTED STUCCO
 AC-1 ARCHITECTURAL CONCRETE - LIGHT
 AC-2 ARCHITECTURAL CONCRETE - DARK
 TC -1 DIMENSIONAL SCREEN CLADDING SYSTEM

GL-1 LAMINATED IMPACT GLASS
 GL-2 OPERABLE LAMINATED IMPACT GLAZING
 GL-3 GLASS GUARDRAIL
 MTL-1 BREAK METAL CLADDING -COLORED GUNMETAL
 MTL-2 DARK FINISH METAL GUARDRAIL
 MTL-3 STAINLESS STEEL CABLE

PROPOSED ELEVATION - WEST AVENUE
 SCALE: 1'-0" = 1/16"



MATERIAL LEGEND

- CM-1 GLAZED TILE
CM-2 PAINTED STUCCO
AC-1 ARCHITECTURAL CONCRETE - LIGHT
AC-2 ARCHITECTURAL CONCRETE - DARK
TC -1 DIMENSIONAL SCREEN CLADDING SYSTEM

- GL-1 LAMINATED IMPACT GLASS
GL-2 OPERABLE LAMINATED IMPACT GLAZING
GL-3 GLASS GUARDRAIL
MTL-1 BREAK METAL CLADDING -COLORED GUNMETAL
MTL-2 DARK FINISH METAL GUARDRAIL
MTL-3 STAINLESS STEEL CABLE

PROPOSED SOUTH ELEVATION -
SCALE: 1"=0" = 1/16"



MIXED-USE DEVELOPMENT ON 17TH & WEST AVENUE
MIAMI BEACH, FLORIDA
65 NW 24TH ST, SUITE 108 • MIAMI, FLORIDA • 33127 • REG # AR94099

No copies, transmissions, reproductions or electronic manipulation of any portion of these drawings in whole or in part are to be made without the express written permission of Touzet Studio Design & Architecture. All designs indicated in these drawings are property of Touzet Studio Design & Architecture. All copyrights reserved (c) 2015.

