

Versailles – temporary super graphic banner

Historic Preservation Board Final Submittal – September 25, 2017

Scope of work:

- Installation of a temporary super graphic banner on the south façade of the historic Versailles building pursuant to Sec. 138-204(a) of the City Code. See size below. The proposed banner is an UltraMesh® Premium 328, coated, polyester mesh banner substrate. The banner allows 30% air-flow but keeps out moisture. The product is REACH (Registration, Evaluation, Authorization and Restriction of Chemicals – an EU regulation) compliant. The banner has 2” reinforced webbing on all sides, with heavy duty #5 spur grommets every 18”. The banner will be installed and secured onto the wall with ¼” x 2¼” tap con screws with a 1¾” galvanized washer every 3’ on center. This is twice as many screws as the prior banner, which a portion tore off, had to secure it to the south facing façade. The banners and attachment system are rated to withstand a maximum wind of 75 MPH. However, in an abundance of caution the Owner will have the banners removed when winds are forecasted to exceed 50 MPH so that the banner is not blown off of the building.

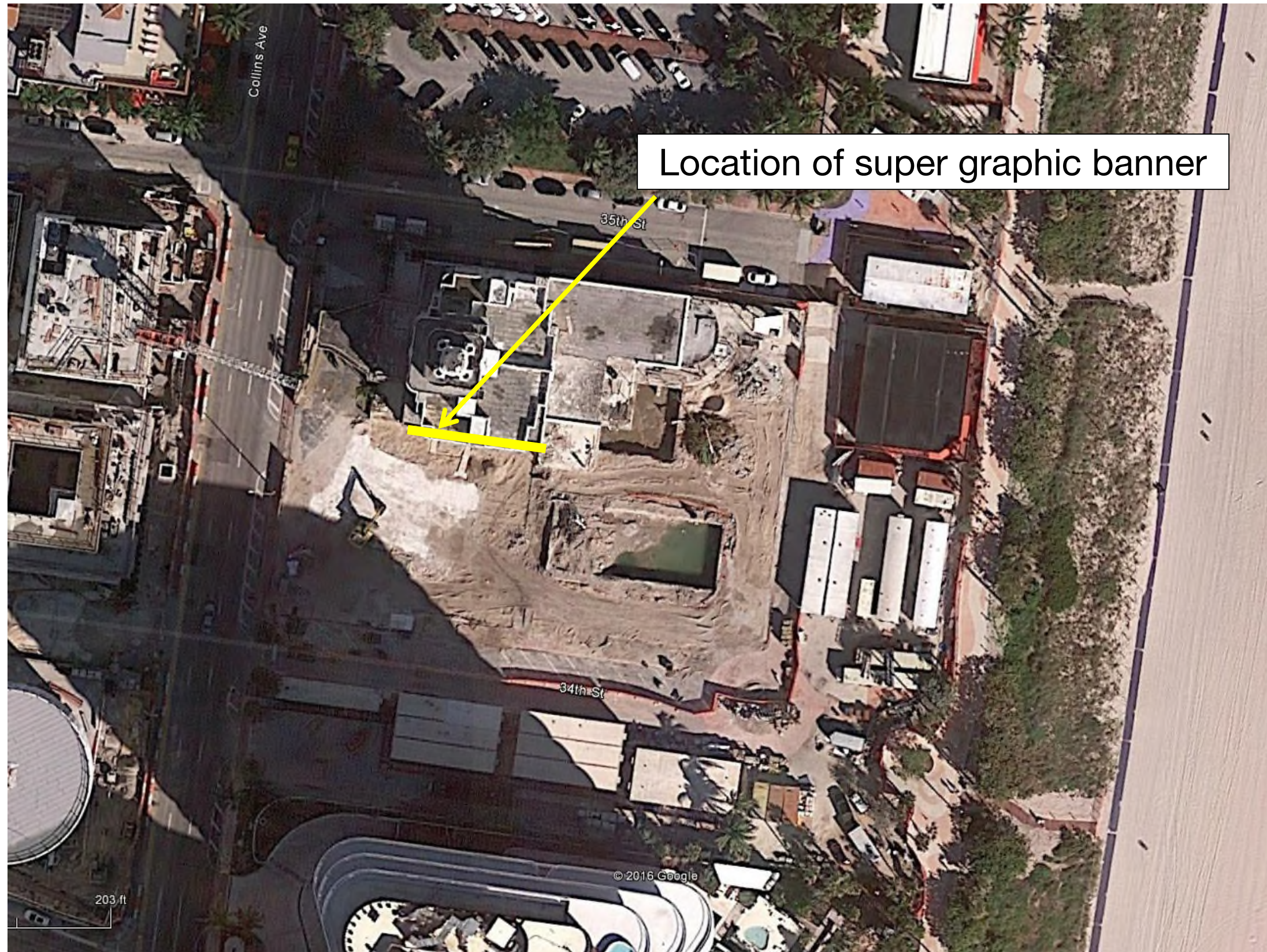
Zoning Information:

Address: 3425 Collins Avenue
Folio number: 02-3226-001-1440
Zoning District: RM-3 and within the Faena District Overlay
Prior use: Hotel
Proposed use: not applicable

Proposed size of temporary super graphic banner: approximately 50’ tall x 105’ tall

Historic District: Collins Waterfront Architectural District & Collins Waterfront Historic District
Contributing Building: Yes

Site Plan



Location of super graphic banner

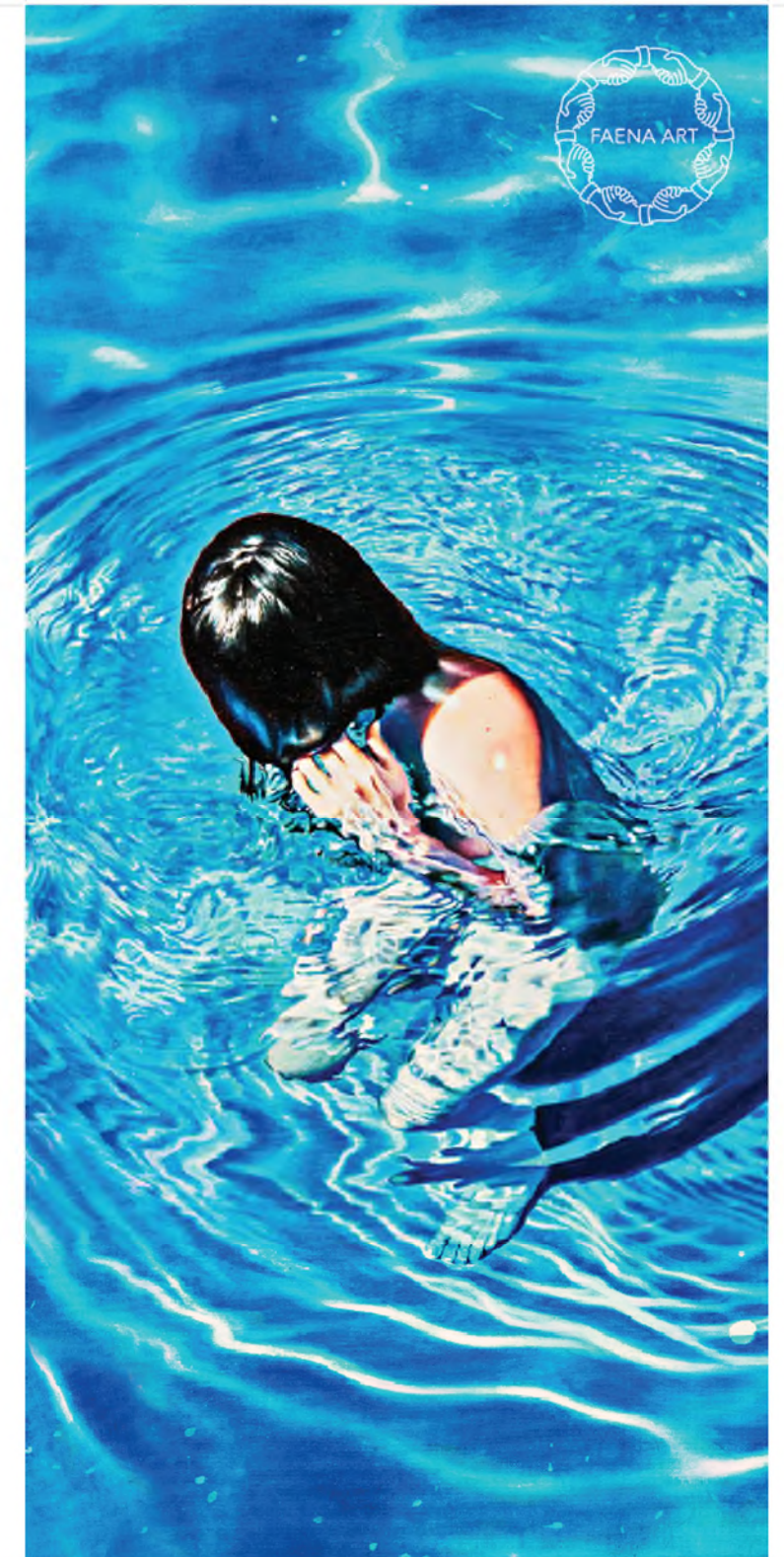
South facing facade



Existing condition



Proposed super graphic banner



Versailles South Side Banner
50 x 105 ft. / Scale 1" = 1'

Copy of approved building permit plans for plain red banner currently on the building

BC1704852

Building Wrap

SCOPE OF WORK:

Installation of a temporary banner located to the East, North and West facade of the Versailles building pursuant to Sec. 138-204 of the City Code, see plans for sizes and method of installation.

ZONING INFORMATION:

Address: 3425 Collins Ave.
Zoning District: RM-2 and within the Faena District Overlay
Existing use: Place of Assembly
Proposed use: Place of Assembly
Proposed signs: UltraMesh® Premium 328 to Sec. 138-204 as temporary banner

Historic District:
Collins Waterfront Architectural District & Collins Waterfront Historic District
Contributing Building: no

Location

FAENA DISTRICT / MIAMI BEACH



JOB COPY
CITY OF MIAMI BEACH
APPROVED FOR PERMIT BY
THE FOLLOWING:

DATE	08/31/17
PROJECT	1704852
OWNER	AZ 0117

PROJECT
VERSAILLES
3425 COLLINS AVE.
MIAMI BEACH FL

City of Miami Beach
Fire Department Division
PLANS APPROVED

OWNER
FAENA GROUP
3201 COLLINS AVE
MIAMI BEACH, 33140
+1 (305) 535-3009

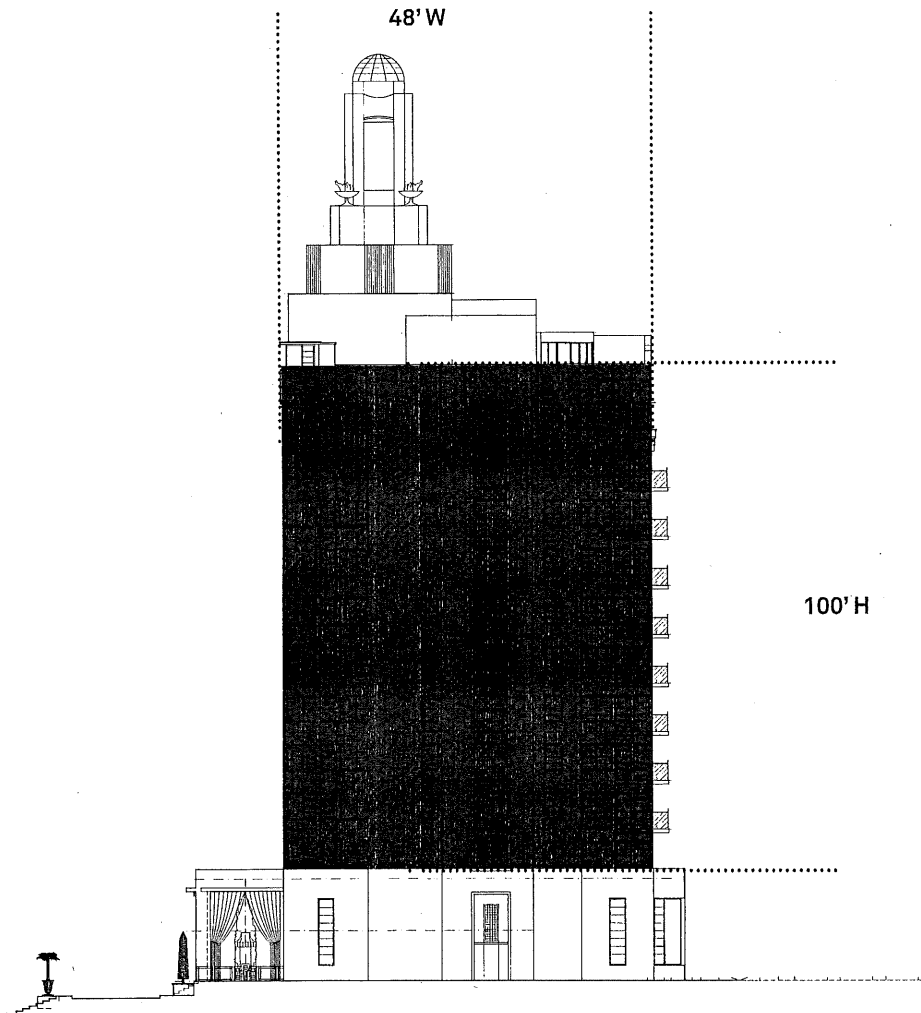
[Signature]
8148049
09/26/2017

Copy of approved building permit plans for plain red banner currently on the building

ARCHITECTURAL / Banner Only
South Section

Location

South View



City of Miami Beach
Pbr-Permitting Division
PLANS APPROVED



PROJECT

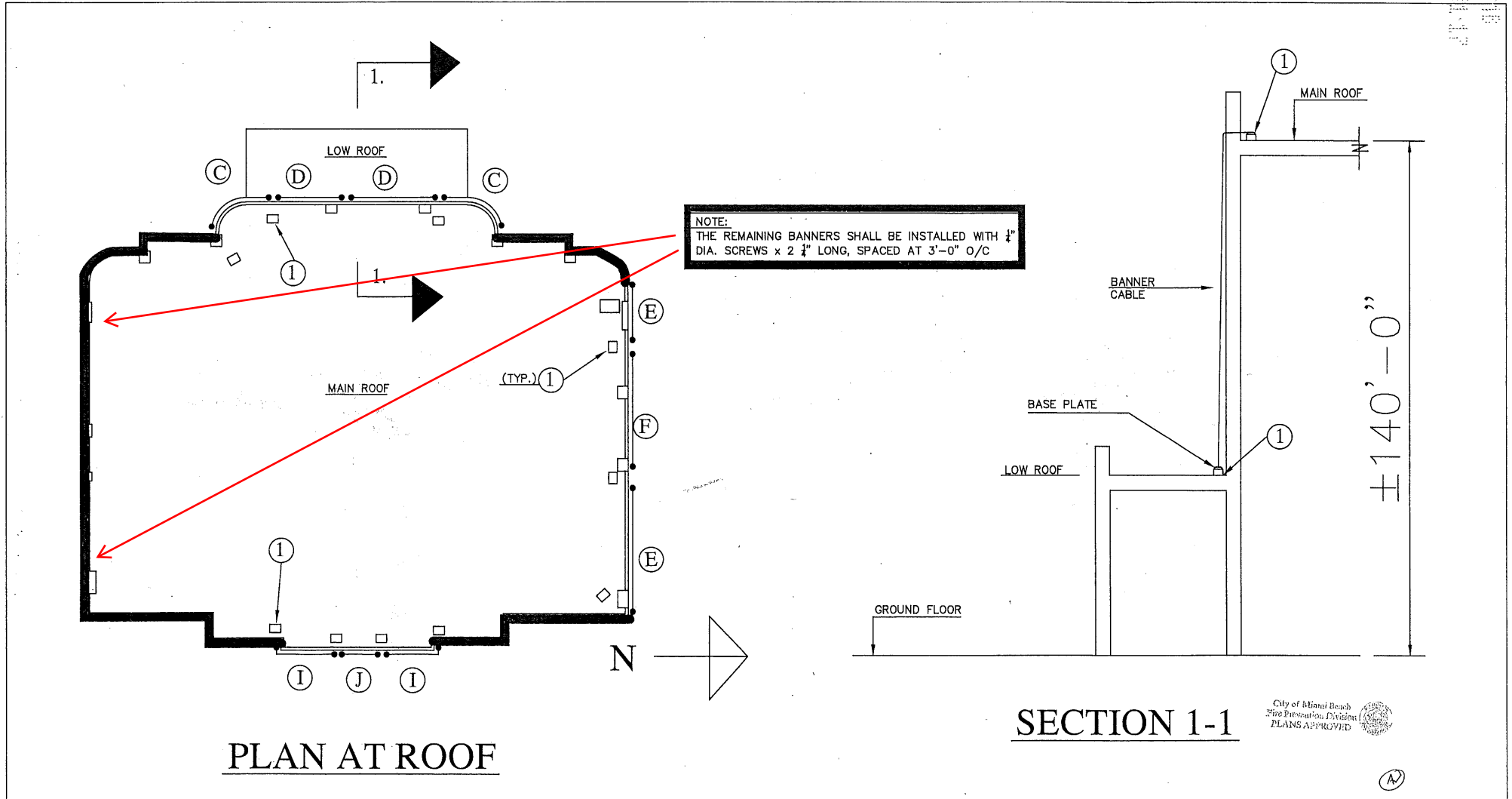
VERSAILLES
3425 COLLINS AVE.
MIAMI BEACH FL

OWNER
FAENA GROUP
3201 COLLINS AVE
MIAMI BEACH, 33140
+1 (305) 535-3009

[Handwritten signature]
07/12/2017

Copy of approved building permit plans for plain red banner currently on the building

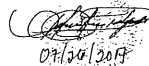
STRUCTURAL
Installation



PLAN AT ROOF

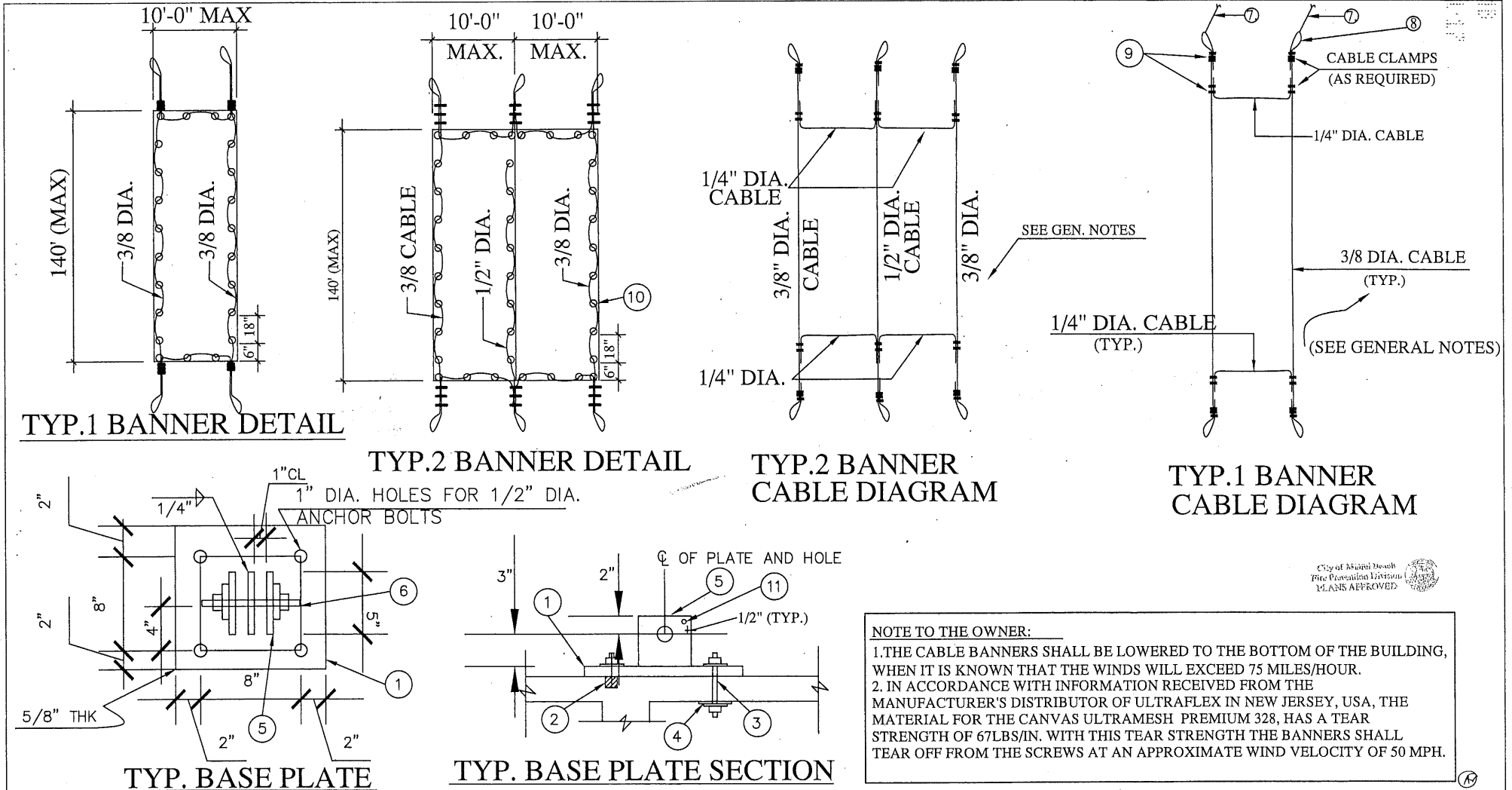
SECTION 1-1

City of Miami Beach
Fire Prevention Division
PLANS APPROVED

No.	Revisions	Date:	Balhence Engineering Inc. Consulting Engineers 901 South State Rd 7, Suite 410 Hollywood, Florida 33023 Tel: (305) 753-1207 and (954) 391-7313 C.A. LIC. No. 7466	Aliro A. Barrero P.E. FL 48049  Seal 07/24/2017	Project: FAENA- VERSAILLES Title: CANVAS ENCLOSURE	Date: 7/24/17	DWG No:
1	Owner Request Revision	7/25/17				Proj. No: 925	S-1
						By: C.J.	
						Scale: NTS	

Copy of approved building permit plans for plain red banner currently on the building

STRUCTURAL
Installation



NOTE TO THE OWNER:

1. THE CABLE BANNERS SHALL BE LOWERED TO THE BOTTOM OF THE BUILDING, WHEN IT IS KNOWN THAT THE WINDS WILL EXCEED 75 MILES/HOUR.
2. IN ACCORDANCE WITH INFORMATION RECEIVED FROM THE MANUFACTURER'S DISTRIBUTOR OF ULTRAFLEX IN NEW JERSEY, USA, THE MATERIAL FOR THE CANVAS ULTRAMESH PREMIUM 328, HAS A TEAR STRENGTH OF 67LBS/IN. WITH THIS TEAR STRENGTH THE BANNERS SHALL TEAR OFF FROM THE SCREWS AT AN APPROXIMATE WIND VELOCITY OF 50 MPH.

City of Miami Beach
Fire Classification Division
PLANS APPROVED

No.	Revisions	Date:	Balence Engineering Inc. Consulting Engineers 901 South State Rd 7, Suite 410 Hollywood, Florida 33023 Tel: (305) 753-1207 and (954) 391-7313 C.A. LIC. No. 7466	Aliro A. Barrero P.E. FL 48049 <i>[Signature]</i> Seal 07/26/2017	Project: FAENA- VERSAILLES	Date: 7/24/17	DWG No: S-2
	1	Owner Request Revision				7/25/17	
					Title: CANVAS ENCLOSURE	Scale: NTS	

Copy of approved building permit plans for plain red banner currently on the building

STRUCTURAL Installation

ITEM	MATERIALS LEGNED DESCRIPTION	REMARKS
1	Base Plate 12" x 12" x 1/2" Thick, with (4) 1" Dia. Holes for 1/2" Dia. Bolts. One for each set of 2 vert. cables.	One coat of anticorrosive paint. FY= 36 KSI.
2	1/2" Dia. Galv. Epoxy Anchors, with nuts and washers. On top of Columns, Beams and slabs thicker than 6".	Hilti Hit RE-500 (5" Embedment)
3	1/2" Dia. Threaded rods x length as required, with nuts and heavy duty washers.	ASTM A-193 Galv.
4	Washer Plate 4" x 4" x 1/4" Thk. Under slab. Repair Slab if spalled (before installation of through rod).	Fy = 36 KSI
5	Plate 5" x 5" x 1/2" Thick with (1) Hole 1 3/8" Dia. (3) per Base Plate	FY=36 KSI. (3) per Base
6	Bolt 1 1/4 Dia. X 10" Long with nut and heavy duty washer.	A325 Galv.
7	1/4" Dia. Wire Rope. To pull banners up	Breaking load= 1,000 lbs.
8	Cable Thimbles. To be placed at Cable supporting bolts	Same size as Cable. Galv.
9	Cable clips. Provide as required to develop full cable breaks strength.	Galvanized.
10	3/4" Dia. Gromets spaced at 18" o/c.	
11	1/2" Dia. Hole to tie Wire Rope. Locate center of hole 3/4" from edge of plate.	Locate Hole at Top Corner.
A	Banner panel designation.	Typical.


GENERAL NOTES:

- 1.CODES: FLORIDA BUILDING CODE 2014, ASCE-7-10, AISC 2014, AISC 2014, OSHA LATEST EDITION
- 2.WIND VELOCITY: 75 MPH
- 3.ALL STEEL PLATES SHALL BE A-36 OR BETTER
- 4.ALL 3/8" DIA. CABLES SHALL BE 7 STRAND GALV. WITH A BREAKING LOAD = 11,000 LBS.
- 5.ALL 1/2" DIA. CABLES SHALL BE 7 STRAND GALV. WITH A BREAKING LOAD = 26,000 LBS.
- 6.ALL 1/4" DIA. CABLES SHALL BE 7 STRAND GALV. WITH A BREAKING LOAD = 4,000 LBS.
- 7.CANVAS MATERIAL SHALL BE ULTRAMESH PREMIUM 328 WITH A TEARING STRENTH = 150 LBS/IN
- 8.PROVIDE CABLE CLAMPS AS REQUIRED TO DEVELOP THE FUL BREAKING LOAD
- 9.PROVIDE HEAVY DUTY WIRE ROPE THIMBLES AT THE ENDS OF ALL VERTICAL CABLES.
- 10.PROVIDE 1/4" DIA. WIRE ROPE CABLES X 150 FEET LONG (OR AS REQUIRED) AT THE END OF ALL VERTICAL CABLES TO PUL THE BANNERS UP TO THE ROOF. FASTEN TO VERT. CABLES AS REQUIRED TO DEVELOP A PULL LOAD OF 1,000 LBS.
- 11.ALL WELDS AT STEEL BASE PLATES SHALL BE 1/4 FILLET WELDS XXE70 ELECTRODES.
- 12.INSTALL ROOF BASE PLATES APPROX. 1'-6" CLEAR FROM WALLS.
- 13.INSTALL BASE PLATES AT THE BOTTOM OF THE BUILDING AS CLOSE AS POSSIBLE TO THE WALLS .
- 14.LOCATE EXISTING REINFORCING WITH A METAL DETECTOR BEFORE DRILLING HOLES IN CONCRETE STRUCTURE.
- 15.DRILL ALL HOLES FOR BASE PLATES BEFORE FABRICATION.
- 16.DRILL HOLES AS REQUIRED IN WALLS TO INSERT THE BANNER CABLES.
- 17.THE CONTRACTOR SHALL FIELD MEASURE THE SIZE OF BANNERS AND BUILDING HEIGHTS BEFORE FABRICATION.
- 18.LOCATE THE FACE OF GROMETS 1 1/2" FROM THE FACE OF THE BANNERS.

City of Miami Beach
Plan Review Division
PLANS APPROVED



(A7)

No.	Revisions	Date:	Balhence Engineering Inc. Consulting Engineers 901 South State Rd 7, Suite 410 Hollywood, Florida 33023 Tel: (305) 753-1207 and (954) 391-7313 C.A. LIC. No. 7466	Aliro A. Barrero P.E. FL 48049  Seal 07/26/2017	Project: FAENA- VERSAILLIES Title: CANVAS ENCLOSURE	Date: 7/24/17	DWG No: S-3
	1	Owner Request Revision				7/25/17	

Mesh banner / Technical data



Technical Data Sheet UltraMesh® Premium 328

UltraMesh® Premium 328 is a 10 oz. coated, polyester mesh banner substrate that is engineered for building wraps, fence graphics, barricade graphics and a variety of indoor and outdoor applications. UltraMesh Premium 328 allows 30% air-flow through and is REACH compliant. The material has a premium white coating which provides vivid graphic production and consistent color management from batch to batch. UltraMesh is compatible for use with solvent, UV, Latex and screen printing. UltraMesh Premium 328 is the choice for print professional seeking to improve efficiency and reduce seam frequency in grand format applications. Available in widths from 61" - 126".

Material Details

CHARACTERISTICS	TEST METHOD	METRIC	ENGLISH
Support Cloth	DIN ISO 2076	Polyester	
Yard dtex	DIN EN ISO 2060	1100 x 1100 dtex	1000 x 1000 denier
Coating Type		PVC	
Total Weight	DIN EN ISO 2286-2	340 g/m ²	10 oz/yd ²
Tensile Strength	DIN EN ISO 1421	2400 x 1500 N/5cm	273 x 171 lbs/in
Tear Strength (warp/weft)	DIN 53363	300 x 250 N	67 x 56 lbs
Air Permeability	DIN EN ISO 9237	1400 l/m ² /s	
RF Weldable (Heat Sealable)	DIN 53354	Yes	Yes
Percentage of Opening		30%	
Fire Resistance		NFPA701, Title 19, CSFM	

Applications

	Building Wraps	Fence Graphics	Stadium Graphics	Barricade Graphics	Street Graphics	Indoor Graphics	Outdoor Graphics
Applications	■	■	■	■	■	■	■

Ink Printability

Solvent	Eco Solvent	UV	Latex	Screen Printing	Dye Transfer	Dye Direct
■		■	*■	■		

Available Sizes

Metric (m)	English (inches)
1.55m x 50m	61" x 164'
3.20m x 100m	126" x 328'
5.00m x 100m	196" x 328'

*Certified for HP Latex Inks

The information on physical and chemical characteristics is based upon tests believed to be reliable. The values are intended only as a source of information. A legally binding guarantee of specific properties is not to be inferred from our specifications. They are given without guarantee and do not constitute a warranty. The purchaser should independently determine, prior to use, the suitability of the material for his/her specific purpose. (Data represents averages and is not intended for use as a specification.)



www.ultraflexXX.com
updated: 08/2016

Ultraflex Systems Inc.
Headquarters
203 Kelsey Lane, Suite E
Tampa, FL 33619
P: (973)627-8608

Ultraflex Systems Inc.
1578 Sussex Turnpike, Bldg. 4
Randolph, NJ 07869
P: (973)627-8608
F: (973)627-8506

Ultraflex Europe
Unit 1 Hardwick Road Industrial Park
Great Gransden Bedfordshire
England SG19 3BJ
Phone: (44)1767-677-100

Ultraflex México
Azafrán No. 112, Col. Granjas México
Del. Iztacalco, C.P. 08400, México D.F.
Tel: (55)31823632, 3182 3608
01 800 822 52 31

Ultraflex Guadalajara
Av. Patria No. 2804
Loma Bonita Sur.
Zapopan, Jalisco CP45086
Mexico

Mesh Banner / Flame Resistance



CALIFORNIA DEPARTMENT OF FORESTRY and FIRE PROTECTION
OFFICE OF THE STATE FIRE MARSHAL

REGISTERED FLAME RESISTANT PRODUCT

Product:

ULTRA MESH PREMIUM 328

Registration No.

F-99601

Product Marketed By:

ULTRAFLEX SYSTEMS INC.
1578 SUSSEX TURNPIKE BLDG 4
RANDOLPH, NJ 07869

This product meets the minimum requirements of flame resistance established by the California State Fire Marshal for products identified in Section 13115, California Health and Safety Code.

The scope of the approved use of this product is provided in the current edition of the CALIFORNIA APPROVED LIST OF FLAME RETARDANT CHEMICALS AND FABRICS, GENERAL AND LIMITED APPLICATIONS CONCERNS published by the California State Fire Marshal.

Deputy State Fire Marshal

Expire: 6/30/2017

FR-8