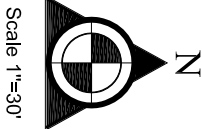


SKETCH OF SURVEY

ANNEX D



PROPERTY TREE LIST			
No.	COMMON NAME	SCIENTIFIC NAME	D C H
1	PALM TREE		0.5' 10' 15'
2	PALM TREE		0.5' 10' 15'
3	PALM TREE		0.5' 10' 15'
4	PALM TREE		0.5' 10' 15'
5	PALM TREE		0.5' 10' 15'
6	MANGO TREE	<i>Mangifera indica</i>	3.0' 30' 40'
7	TREE		1.5' 15' 40'
8	TREE		1.5' 15' 40'
9	TREE		1.5' 15' 40'
10	TREE		1.5' 15' 40'
11	TREE		1.5' 15' 40'
12	TREE		1.5' 15' 40'
13	TREE		1.5' 15' 40'
14	TREE		1.5' 15' 40'
15	TREE		1.5' 15' 40'
16	PALM TREE		1.5' 15' 40'
17	PALM TREE		1.5' 15' 40'
18	TREE		1.5' 15' 40'
19	TREE		1.5' 15' 40'
20	TREE		1.5' 15' 40'
21	TREE		1.5' 15' 40'
22	TREE		1.5' 15' 40'
23	PALM CLUSTER		1.5' 15' 40'
24	TREE		1.5' 15' 40'
25	TREE		1.5' 15' 40'
26	TREE		1.5' 15' 40'
27	TREE		4.0' 20' 30'

NOTE: ⑤ TREE LOCATION & NUMBER DESIGNATION

This Map of Survey has been prepared for the exclusive use of the entities named herein and the certification does not extend to any unnamed party.

CERTIFY TO:

Stefania Scaffidi.

SURVEYOR'S CERTIFICATION:

I hereby certify: That this "BOUNDARY SURVEY" and the Map of Survey resulting there from was performed under my direction and is true and correct to the best of my knowledge and belief and further, that said "BOUNDARY SURVEY" meets the intent of the "Minimum Technical Standards for Land Surveying in the State of Florida", pursuant to Rule 5J17 of the Florida Administrative Code and its implementing Rule Chapter 472.027 of the Florida Statutes.

Survey is not covered by Professional Liability Insurance.

ORIGINAL FIELD DATE: 03-30-2016  
REVISIONS: 10-18-2016  
REVISIONS: 01-11-2017  
REVISIONS: 02-28-2017  
TREE SURVEY: 05-20-2017  
DRAWN: A.V.L.  
SHEET No. 1/1

Gary B. Castiel, P.L.S.  
Registered Surveyor and Mapper No. 4129  
State of Florida.

Land Surveyors & Mapper  
12016 SW 132nd Ct., MIAMI, FL 33186  
Telephone: 786-290-4184

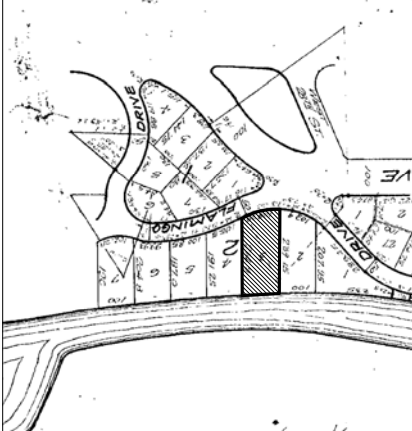
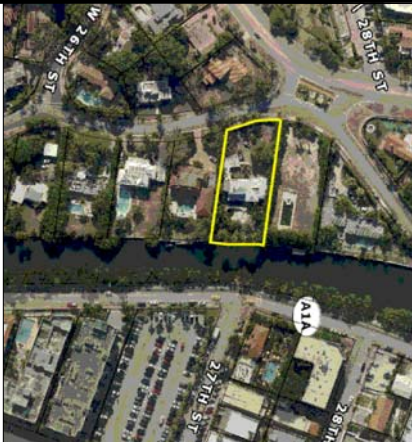
JOB No.:

03-144-16-E

AERIAL MAP (NOT TO SCALE)



LOCATION MAP (NOT TO SCALE)



PALMS AT REAR 05-20-17



TREES & CONSTRUCTION 05-20-17



LIST OF POSSIBLE ENCROACHMENT:

N/A

BENCHMARK USED

BM # 30-02,

Elevation = 4.82'

converted to NGVD 1929.

FLOOD ZONE INFORMATION:

Community No. 120651

Panel No. 0317

Suffix: L

FIRM Date: 09-11-2009

Flood Zone: AE + 8'