



Calophyllum brasiliense
Brazilian Beautyleaf



Coccothrinax miraguama 'Hybrid'



Carpentaria acuminata
Carpentaria Palm (Existing)



Myrcianthes fragans
Simpson Stopper



Microsorium scolopendrium
Wart Fern

GENERAL PLANTING NOTES AND SPECIFICATIONS:

GENERAL

1. EXISTING TREES DESIGNATED TO REMAIN SHALL BE PROTECTED DURING ALL CONSTRUCTION PHASES. ANY TREES DESIGNATED TO REMAIN WHICH ARE SCARRED OR DESTROYED WILL BE REPLACED AT THE CONTRACTORS EXPENSE, WITH SIMILAR SPECIES, SIZE AND QUALITY.

2. EXISTING TREES DESIGNATED TO BE STORED OFF-SITE, SHALL BE PROTECTED AND CARED FOR ACCORDING TO INDUSTRY STANDARD. ANY TREES OR SHRUBS SCARRED OR DESTROYED WILL BE REPLACED AT THE CONTRACTORS EXPENSE, WITH SIMILAR SPECIES, SIZE AND QUALITY.

3. LANDSCAPE CONTRACTOR SHALL BECOME FAMILIAR WITH ALL UNDERGROUND UTILITIES OR STRUCTURES PRIOR TO DIGGING. LANDSCAPE CONTRACTOR SHALL REPAIR ALL DAMAGE TO UTILITIES AND/OR CONSTRUCTION CAUSED BY CONSTRUCTION OR DIGGING, AT NO COST TO THE OWNER.

4. ALL PLANT MATERIALS SHALL BE GUARANTEED FOR A PERIOD OF 12 MONTHS AFTER DATE OF SUBSTANTIAL COMPLETION.

5. LANDSCAPE CONTRACTOR SHALL VERIFY ALL ESTIMATED QUANTITIES OF MATERIAL SHOWN ON THE DRAWINGS PRIOR TO SUBMITTING HIS BID. PLANTING PLAN TO TAKE PRECEDENCE OVER PLANT LIST.

6. EXISTING PLANT MATERIAL NOT SHOWN ON THE PLAN AND IN CONFLICT WITH NEW PLANTING SHALL BE EVALUATED AT THE TIME OF NEW PLANTING INSTALLATION BY THE LANDSCAPE ARCHITECT.

7. ALL BUILDING CONSTRUCTION MATERIAL AND FOREIGN MATERIAL SHALL BE REMOVED FROM PLANTING AREAS AND REPLACED WITH 80/20 MIX FILL SOIL, OR AS PER SPECIFICATIONS. ALL ISLANDS IN PARKING LOTS AND AROUND BUILDINGS, SHALL BE EXCAVATED TO A DEPTH OF 3" MIN. AND REPLACED WITH 80/20 PLANT MIX, OR AS PER SPECIFICATIONS.

8. ALL PLANT MATERIAL SYMBOLS SHOWN ON LANDSCAPE PLAN SHALL BE CONSIDERED "LANDSCAPE" AND SHOULD BE ADJUSTED IN THE FIELD BY CONTRACTOR TO AVOID ALL UTILITIES AND ALL OTHER OBSTRUCTIONS AFTER CONSULTING THE LANDSCAPE ARCHITECT.

9. ALL SPECIES SHOWN FOR PLANT MATERIAL ON THE PLAN AND PLANT LIST ARE TO BE CONSIDERED MINIMUM. ALL PLANT MATERIAL MUST MEET OR EXCEED THESE MINIMUM REQUIREMENTS FOR BOTH HEIGHT AND SPREAD. ANY OTHER REQUIREMENTS FOR SPECIFIC SHAPE OR EFFECT AS NOTED ON THE PLAN SHALL ALSO BE REQUIRED FOR ACCEPTANCE. ALL TREES TO HAVE SINGLE TRUNK, UNLESS OTHERWISE NOTED ON THE PLANS OR PLANT LIST.

10. SITE PREPARATION SHALL INCLUDE THE ERADICATION AND REMOVAL OF ANY WEEDS AND/OR GRASS, AS WELL AS CLEAN-UP OF ANY DEAD MATERIAL AND FINISH GRADING AS PER THE SPECS.

11. THE LANDSCAPE CONTRACTOR SHALL AT ALL TIMES KEEP THE JOB SITE CLEAN AND FREE FROM ACCUMULATION OF WASTE MATERIAL, DEBRIS AND RUBBER.

12. THE LANDSCAPE CONTRACTOR SHALL EXERCISE CAUTION TO PROTECT ANY NEW HARDSCAPE CONSTRUCTION OR IRRIGATION. ANY DAMAGE SHALL BE REPLACED OR REPAIRED TO THE ORIGINAL STATE BY THE LANDSCAPE CONTRACTOR AT NO ADDITIONAL COST TO THE OWNER.

13. ALL PLANT MATERIAL TO BE FLORIDA #1 OR BETTER AS DEFINED BY THE FLORIDA DEPARTMENT OF AGRICULTURES CODES AND STANDARDS FOR NURSERY PLANTS PART I AND II.

14. MULCH ALL PLANTING AREAS WITH SHREDDED ORGANIC MULCH TO A MINIMUM DEPTH OF 2" WITH THE EXCEPTION OF BEACH PLANTING.

15. ALL PLANTING AREAS WITHIN LIMIT OF WORK SHALL BE 100% FULLY IRRIGATED. THE IRRIGATION CONTRACTOR AWARDED THE BID SHALL COMPLY WITH THE PROPOSED IRRIGATION DESIGN.

16. ON-SITE LAYOUT OF PLANT MATERIAL MUST BE COORDINATED WITH THE LANDSCAPE ARCHITECT PRIOR TO INSTALLATION. LA TO BE GIVEN A MIN. OF 11 WEEKS NOTICE TO REVIEW PRIOR TO IMPLEMENTATION.

17. LANDSCAPE CONTRACTOR TO INCLUDE REMOVAL, CORRECTIVE PRUNING AND/OR REPLACEMENT. ANY CORRECTIVE ACTIONS REQUIRED SHALL BE PERFORMED OR DIRECTED BY AN ISA OR ASCA CERTIFIED ARBORIST IN ACCORDANCE WITH FLORIDA DEPARTMENT OF AGRICULTURE'S (FDACS) PRUNING STANDARDS AND/OR AN ISSUED ERM TREE OR ENVIRONMENTAL PERMIT.

18. TREE PROTECTION BARRIERS MUST BE INSTALLED AT THE DRP LINES OF ALL TREES AND PALMS TO REMAIN OR BE RELOCATED PRIOR TO THE START OF CONSTRUCTION ACTIVITIES. ON-SITE AND SHALL REMAIN IN PLACE UNTIL CONSTRUCTION HAS COMPLETED.

19. MULCH SHALL NOT BE APPLIED WITHIN 6" OF ANY TREE OR PALM TRUNKS THAT ARE INSTALLED OR INCORPORATED INTO THE PROJECT FOR ROW. TREES/PALMS: PLEASE UTILIZE AND/OR PREMIUM PINEBARK BROWN, SHREDDED MULCH OR A CITY APPROVED ALTERNATIVE.

20. SHOULD ANY CORRECTIVE STRUCTURAL PRUNING BE NECESSARY FOR TREES PROPOSED TO REMAIN ON SITE, DUE TO CLEARANCE, SAFETY OR FOR CONSTRUCTION RELATED REASONS, THE PRUNING SHALL BE PERFORMED OR DIRECTED BY AN ISA OR ASCA CERTIFIED ARBORIST IN ACCORDANCE WITH THE LATEST VERSION IF THE ANSI A-300 PRUNING STANDARDS AND GOOD HORTICULTURAL PRACTICES. THE CITY URBAN FORESTER SHALL BE PROVIDED WITH A WRITTEN COPY OF THE PROPOSED PRUNING PLAN INCLUDING THE REASONS WHY PRUNING IS NECESSARY PRIOR TO THE PRUNING ACTIVITIES BEING IN PLACE.

21. CARE SHALL BE TAKEN TO AVOID UTILITY OR CONSTRUCTION TRENCHING THROUGH EXISTING TREE OR PALM DRIP LINES OF TREES SLATED TO REMAIN IN PLACE OR BE RELOCATED. IF CONSTRUCTION REQUIRES THE CUTTING OF ANY ROOTS WITH A DIAMETER OF 2" OR GREATER, ROOTS SHALL BE CLEANLY CUT WITH A SHARP TOOL, AS DIRECTED BY AN ISA CERTIFIED ARBORIST AND IN ACCORDANCE WITH THE ANSI A-300 STANDARDS. CUT ROOTS SHOULD BE IMMEDIATELY COVERED WITH SOIL TO PREVENT DRYING. ROOTS SHOULD NOT BE TORN OR BROKEN BY HEAVY EQUIPMENT. SHREDDED, RAGGED OR BROKEN ROOTS ENDS SHOULD BE NOTED IN WRITING AND AN ARBORIST SHOULD BE CONSULTED PRIOR TO ANY ROOT PRUNING TAKING PLACE.

HANDLING AND TRANSPORTATION

1. TREES/PALMS SHALL BE PROPERLY HANDLED DURING EXCAVATION, MOVING, STORAGE, RELOCATION, AND REPLANTING. DO NOT SCAR OR OTHERWISE DAMAGE TRUNKS AND BRANCHES, AND AVOID SPREADING LIMBS, BRANCHES, AND FRONDS. DAMAGE TO TREE/PALM MAY BE CAUSE FOR ITS REJECTION, AND MAY REQUIRE MITIGATION REPLACEMENT.

2. CONTRACTOR SHALL BE RESPONSIBLE FOR THE MANUAL WATERING OF ALL RELOCATED TREES/PALMS DURING MAINTENANCE PERIOD, UNTIL FINAL ACCEPTANCE OF ALL WORK BY THE LANDSCAPE ARCHITECT AND/OR CLIENT.

3. LANDSCAPE CONTRACTOR SHALL BE RESPONSIBLE FOR INSTALLING AND MAINTAINING TREE/PALM PROTECTION. INSTALL BARRIAGE OF GALVANIZED WELDED WIRE FABRIC OR PLASTIC NET TO ENCOMPASS THE OUTLINE OF THE TREE/PALM. BARRIAGE SHALL BE PLUMB, TAUT AND STURDY. BARRIAGE TO BE LEFT UP AND MAINTAINED UNTIL DIRECTED TO REMOVE BY LANDSCAPE ARCHITECT.

TREE PROTECTION MATERIALS

1. BARRIAGE SHALL BE GALVANIZED AND WELDED WIRE FABRIC, 1X1" MESH, 30.48 IN HEIGHT RECOMMENDED CONTACT.

Wire Cloth Mesh

7158 123rd Circle N.

Largo, FL 32773

PH: 1-888-947-3236

FX: 727-524-4000

2. POSTS & RAIL: METAL POST SUFFICIENT TO HOLD FABRIC PLUMB AND TAUT

3. ACCESS: PROVIDE HINGED LATCHING GATE.

4. METAL GATE SHALL PERMIT FREE PASSAGE OF WATER, AIR AND SHALL ACCEPT CONSTRUCTION TRAFFIC WITHOUT EXCESSIVE DEFLECTION.

WARRANTY

1. LANDSCAPE CONTRACTOR SHALL PROVIDE A MINIMUM OF ONE (1) YEAR GUARANTEE FOR ALL RELOCATED TREES/PALMS AFTER FINAL ACCEPTANCE BY LANDSCAPE ARCHITECT AND/OR CLIENT.

2. LANDSCAPE CONTRACTOR SHALL REMOVE COMPLETELY AND DISPOSE OF OFF-SITE ANY RELOCATED TREE/PALM THAT FAILS TO THRIVE AS DETERMINED BY THE LANDSCAPE ARCHITECT.

3. FOR ANY RELOCATED TREE/PALM REMOVED DUE TO ITS FAILURE TO THRIVE, LANDSCAPE CONTRACTOR SHALL BE RESPONSIBLE FOR REPLACING AND INSTALLING WITH A SPECIMEN OF EQUAL OR GREATER SPECIFICATION OF ORIGINAL REPLACEMENT MATERIAL SHALL BE APPROVED BY LANDSCAPE ARCHITECT PRIOR TO PROCUREMENT PREPARATION OR INSTALLATION.

TREE / PALM RELOCATION NOTES

1. VERIFY AND INSURE ALL TREES/PALMS IDENTIFIED ON THE CONSTRUCTION DRAWINGS AND THOSE TAGGED IN THE FIELD CORRESPOND AS TO NUMBER AND DESCRIPTION. ANY DISCREPANCIES SHALL BE BROUGHT TO THE ATTENTION OF THE LANDSCAPE ARCHITECT IMMEDIATELY PRIOR TO PREPARATION.

2. LANDSCAPE CONTRACTOR SHALL BE RESPONSIBLE FOR TREE/PALM PROTECTION OF ALL VERIFIED MATERIAL. INSTALL BARRIAGE OF GALVANIZED WELDED WIRE FABRIC OR PLASTIC MESH TO ENCOMPASS THE OUTLINE OF THE TREE/PALM. BARRIAGE TO BE REMOVED WHEN DIRECTED BY LANDSCAPE ARCHITECT.

3. TREE ROOT BALL SHALL BE ROOT PRUNED 50% (EQUALLY AROUND TREE) 60 DAYS PRIOR TO TRANSPLANT. THE REMAINING 50% TO BE PRUNED 30 DAYS PRIOR TO TRANSPLANTING.

4. PALMS TO BE RELOCATED MAY BE IMMEDIATELY RELOCATED AFTER DIGGING.

5. ROOTS TO BE PRUNED WITH CLEAN, SHARP TOOLS. ROOTS ONE (1) INCH AND LARGER IN DIAMETER SHALL BE NEATLY AND CLEANLY CUT WITH A HAND SAW OR OTHER APPROVED CUTTING IMPLEMENT AS DIRECTED BY AN ISA OR ASCA CERTIFIED ARBORIST.

6. LANDSCAPE CONTRACTOR TO APPLY MYCORRHIZA APPLICATION TO ROOTS DURING ROOT PRUNING AND DIGGING OPERATIONS. ALL PRUNING TO BE REVIEWED AND APPROVED BY LANDSCAPE ARCHITECT PRIOR TO PRUNING.

7. DEAD WOOD, CROSSING BRANCHES, AND GENERAL CANOPY PRUNING SHALL BE PERFORMED OR DIRECTED BY AN ISA OR ASCA CERTIFIED ARBORIST IN ACCORDANCE WITH THE LATEST VERSION OF THE ANSI A-300 PRUNING STANDARDS AND GOOD HORTICULTURAL PRACTICES IMMEDIATELY AFTER COMPLETION OF ROOT PRUNING OF EACH SPECIMEN TO BE RELOCATED. ALL PRUNING TO BE REVIEWED AND APPROVED BY LANDSCAPE ARCHITECT PRIOR TO PRUNING.

8. ROOT BALL SIZE TABLE: NOTE: ROOT BALL SIZES SHALL EXCEED MINIMUM STANDARDS SET FORTH IN GRAPES AND STANDARDS FOR NURSERY PLANTS, PART II, PALMS AND TREES, FLORIDA DEPARTMENT OF AGRICULTURE.

9. MAINTAIN COMPACT ROOT BALLS. ROOT BALLS SHALL BE COMPLETELY ENCLOSED WITHIN A BURLAP COVERING OR STRETCH WRAP AS COMMONLY USED WITHIN THE HORTICULTURAL INDUSTRY IN TWO COMPLETE LAYERS.

10. ALL TREES TO BE FLOODED FOR FIVE (5) DAYS PRIOR TO TRANSPLANT.

11. ALL FITS TO BE FILLED THE SAME DAY AND WITH CLEAN FILL IN 18 INCH LIFTS/LAYERS, EACH THEN COMPACTED BEFORE A SUBSEQUENT 18" LIFT/LAYER IS PLACED. REPEAT UNTIL BACKFILL IS FLUSH WITH SURROUNDING GRADE.

12. CORRECT ALL PROBLEMS RELATED TO SETTLEMENT, EROSION, OR OTHER DISTRESS OF EXCAVATED BACKFILL PIT FROM WHICH TREE/PALM HAS BEEN REMOVED, INCLUDING THE COMPLETE AND THOROUGH REMOVAL OF ALL RESIDUAL ROOTS, STUMPS AND PORTIONS AND PARTS THEREOF.

13. RESTORE THE SURFACE WITH MATERIAL TO MATCH ADJACENT AREAS. MATERIAL TO BE APPROVED BY LANDSCAPE ARCHITECT. CONTRACTOR TO PROVIDE A MINIMUM ONE YEAR WARRANTY ON SETTLING AND PLANT MATERIAL.

14. LANDSCAPE CONTRACTOR IS RESPONSIBLE FOR ALL MATERIAL INCLUDING BUT NOT LIMITED TO BACKFILL MATERIAL, PROTECTION FENCING, FLAGGING, ROOT BALL BURLAP OR SHRINK WRAP.

INSTALLATION

1. VERIFY ALL UNDERGROUND CONSTRUCTIONS OR OBSTRUCTIONS (UTILITIES, SEPTIC SYSTEMS, ETC) ARE IDENTIFIED, LOCATED AND CLEARLY MARKED AS APPROPRIATE PRIOR TO EXCAVATION OF PLANTING FITS FOR RELOCATED TREES AND PALMS. ANY UNKNOWN OBJECTS SHALL BE BROUGHT TO THE ATTENTION OF THE LANDSCAPE ARCHITECT IMMEDIATELY PRIOR TO INSTALLING AND BACKFILLING.

2. LANDSCAPE CONTRACTOR TO FLAG ALL PROPOSED PLANT LOCATIONS FOR LANDSCAPE ARCHITECTS APPROVAL PRIOR TO INSTALLATION.

3. PLANTING FITS SHALL BE A MINIMUM OF TWO (2) TIMES LARGER IN DIAMETER AND ONE AND A HALF (1-1/2) TIMES LARGER IN DEPTH THAN THE ROOT BALL. ROUGHEN SIDES AND BOTTOM 1/2 FT.

4. AFTER EACH PLANTING FIT IS EXCAVATED, PLACE SUFFICIENT PLANTING MIX IN BOTTOM OF EXCAVATION, AND SEAT PLANT, INSURING TOP OF ROOT BALL IS FLUSH WITH IMMEDIATELY ADJACENT FINAL OR PROPOSED GRADE.

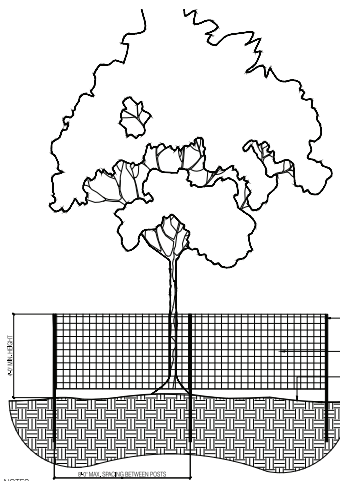
5. LANDSCAPE CONTRACTOR TO INSURE ALL PLANT MATERIAL IS INSTALLED AT THE CORRECT ELEVATION, REFER TO GRADING PLAN.

6. LANDSCAPE CONTRACTOR TO INSURE ALL ROOT FLARES ARE EXPOSED.

7. CENTER EACH RELOCATED TREE/PALM IN ITS PLANTING FIT AND BACKFILL WITH SPECIFIED PLANTING MIX.

8. PLACE PLANTING MIX IN 12 INCH LIFTS/LAYERS AROUND ROOT BALL AND COMPACT UNTIL ALL VOIDS ARE FILLED WITH COMPACTED PLANTING MIX.

9. BUILD SOIL SAUCER OF MOUNDED EXCAVATED SOIL AROUND PERIMETER OF EACH PLANTING PIT TO FORM WATERING BASIN. MULCH TO A DEPTH OF 3".

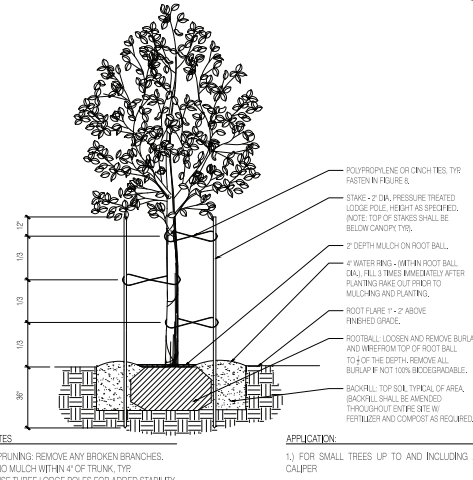


NOTES

1. THE TREE PROTECTION BARRIAGE SHALL BE INSTALLED PER CITY OF MIAMI BEACH CODE CHAPTER 46, AND WILL BE AT LEAST FOUR (4) FEET HIGH. THE BARRIER SHALL BE CONSTRUCTED OF CONTINUOUS CHAIN LINK FENCE WITH METAL POSTS AT (8) FOOT SPACING, OR OF 2X4 POSTS WITH THREE EQUALLY SPACED 2X4 RAILS. POSTS MAY BE SHIFTED TO AVOID ROOTS.
2. THE BARRIER SHALL BE PLACED AT THE DRP LINE OF EACH TREE OR PRESERVATION AREA AND IN NO CASE LESS THAN 12" FROM THE TRUNK OF ANY PROTECTED TREE. FOR ANY DISCREPANCIES RELATED TO PLACEMENT OF THE BARRIER, THE CITY'S URBAN FORESTER SHOULD BE CONTACTED FOR APPROVAL.
3. HAND WORK ONLY WITHIN TREE BARRIAGES.
4. TREE BARRIAGE APPROVAL: OBTAIN CITY APPROVAL OF TREE BARRIAGES BEFORE BEGINNING CLEARING OPERATIONS OR ANY SITE DEVELOPMENT.

1 COMB TREE PROTECTION DETAIL

SCALE: N.T.S.



NOTES

1. PRUNING: REMOVE ANY BROKEN BRANCHES.
2. NO MULCH WITHIN 4" OF TRUNK, TYPE
3. USE THREE LOOSE POLES FOR ADDED STABILITY.

APPLICATION:

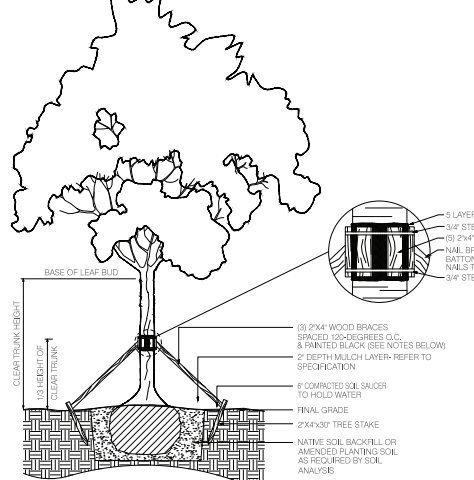
1. FOR SMALL TREES UP TO AND INCLUDING 2 1/2" CALIPER

4 SMALL TREE PLANTING AND STAKING DETAIL

SCALE: N.T.S.

2 MEDIUM TREE PLANTING & STAKING DETAIL

SCALE: N.T.S.

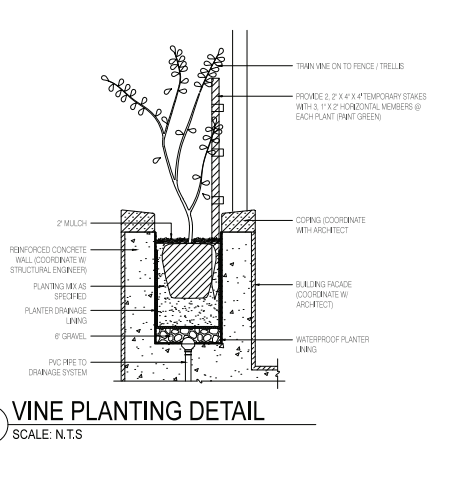


NOTES

1. PRUNING: REMOVE ANY BROKEN BRANCHES.
2. NO MULCH WITHIN 4" OF TRUNK, TYPE
3. USE THREE LOOSE POLES FOR ADDED STABILITY.

5 LARGE TREE PLANTING AND STAKING DETAIL

SCALE: N.T.S.



NOTES

1. PRUNING: REMOVE ANY BROKEN BRANCHES.
2. NO MULCH WITHIN 4" OF TRUNK, TYPE
3. USE THREE LOOSE POLES FOR ADDED STABILITY.

8 VINE PLANTING DETAIL

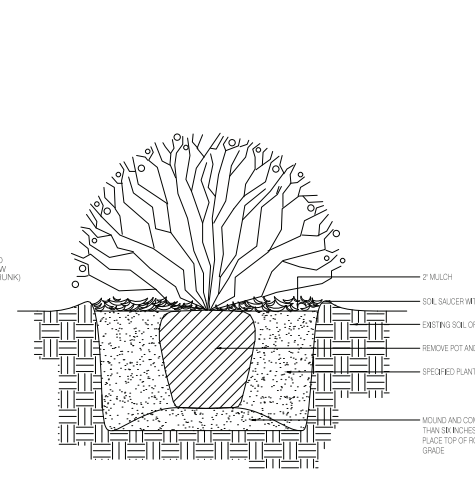
SCALE: N.T.S.

NOTES

1. TREES OVER 30' ON HEIGHT: USE MINIMUM (4) 4X4 BRACING AND STAKES.
2. PRIMARY STAKES SHOULD BE PLACED PARALLEL TO WALKWAYS WHENEVER POSSIBLE.
3. RECEIVING PLANTING HOLE SHALL BE APPROXIMATELY 1/3 LARGER THAN ROOTBALL.
4. BUD SHALL BE PERPENDICULAR TO THE GROUND PLANE.
5. TRUNK SHALL BE STRAIGHT AND WITHOUT CURVES.
6. NO SCARRED OR BLACKENED TRUNKS.
7. AMENDED SOIL MIX TO BE ADDED AT THE TIME OF PLANTING IF NEEDED. SHALL CONSIST OF A RATIO MIX OF 80% CLEAN SILICA SAND AND 20% SCREENED, FLOWERS/2 TOPSOIL AS NEEDED.

3 PALM PLANTING AND STAKING DETAIL

SCALE: N.T.S.

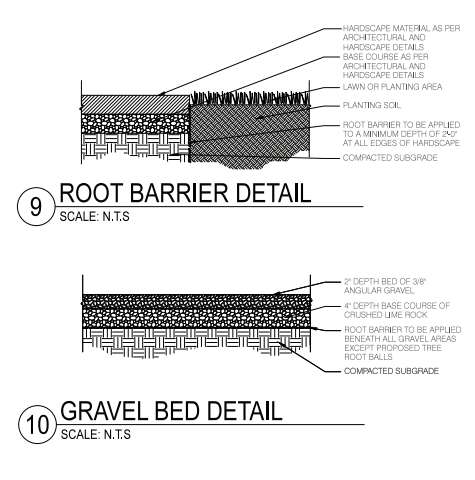


NOTES

1. TREES OVER 30' ON HEIGHT: USE MINIMUM (4) 4X4 BRACING AND STAKES.
2. PRIMARY STAKES SHOULD BE PLACED PARALLEL TO WALKWAYS WHENEVER POSSIBLE.
3. RECEIVING PLANTING HOLE SHALL BE APPROXIMATELY 1/3 LARGER THAN ROOTBALL.
4. BUD SHALL BE PERPENDICULAR TO THE GROUND PLANE.
5. TRUNK SHALL BE STRAIGHT AND WITHOUT CURVES.
6. NO SCARRED OR BLACKENED TRUNKS.
7. AMENDED SOIL MIX TO BE ADDED AT THE TIME OF PLANTING IF NEEDED. SHALL CONSIST OF A RATIO MIX OF 80% CLEAN SILICA SAND AND 20% SCREENED, FLOWERS/2 TOPSOIL AS NEEDED.

6 SHRUB PLANTING DETAIL

SCALE: N.T.S.



NOTES

1. TREES OVER 30' ON HEIGHT: USE MINIMUM (4) 4X4 BRACING AND STAKES.
2. PRIMARY STAKES SHOULD BE PLACED PARALLEL TO WALKWAYS WHENEVER POSSIBLE.
3. RECEIVING PLANTING HOLE SHALL BE APPROXIMATELY 1/3 LARGER THAN ROOTBALL.
4. BUD SHALL BE PERPENDICULAR TO THE GROUND PLANE.
5. TRUNK SHALL BE STRAIGHT AND WITHOUT CURVES.
6. NO SCARRED OR BLACKENED TRUNKS.
7. AMENDED SOIL MIX TO BE ADDED AT THE TIME OF PLANTING IF NEEDED. SHALL CONSIST OF A RATIO MIX OF 80% CLEAN SILICA SAND AND 20% SCREENED, FLOWERS/2 TOPSOIL AS NEEDED.

9 ROOT BARRIER DETAIL

SCALE: N.T.S.



NOTES

1. TREES OVER 30' ON HEIGHT: USE MINIMUM (4) 4X4 BRACING AND STAKES.
2. PRIMARY STAKES SHOULD BE PLACED PARALLEL TO WALKWAYS WHENEVER POSSIBLE.
3. RECEIVING PLANTING HOLE SHALL BE APPROXIMATELY 1/3 LARGER THAN ROOTBALL.
4. BUD SHALL BE PERPENDICULAR TO THE GROUND PLANE.
5. TRUNK SHALL BE STRAIGHT AND WITHOUT CURVES.
6. NO SCARRED OR BLACKENED TRUNKS.
7. AMENDED SOIL MIX TO BE ADDED AT THE TIME OF PLANTING IF NEEDED. SHALL CONSIST OF A RATIO MIX OF 80% CLEAN SILICA SAND AND 20% SCREENED, FLOWERS/2 TOPSOIL AS NEEDED.

10 GRAVEL BED DETAIL

SCALE: N.T.S.



NOTES

1. TREES OVER 30' ON HEIGHT: USE MINIMUM (4) 4X4 BRACING AND STAKES.
2. PRIMARY STAKES SHOULD BE PLACED PARALLEL TO WALKWAYS WHENEVER POSSIBLE.
3. RECEIVING PLANTING HOLE SHALL BE APPROXIMATELY 1/3 LARGER THAN ROOTBALL.
4. BUD SHALL BE PERPENDICULAR TO THE GROUND PLANE.
5. TRUNK SHALL BE STRAIGHT AND WITHOUT CURVES.
6. NO SCARRED OR BLACKENED TRUNKS.
7. AMENDED SOIL MIX TO BE ADDED AT THE TIME OF PLANTING IF NEEDED. SHALL CONSIST OF A RATIO MIX OF 80% CLEAN SILICA SAND AND 20% SCREENED, FLOWERS/2 TOPSOIL AS NEEDED.

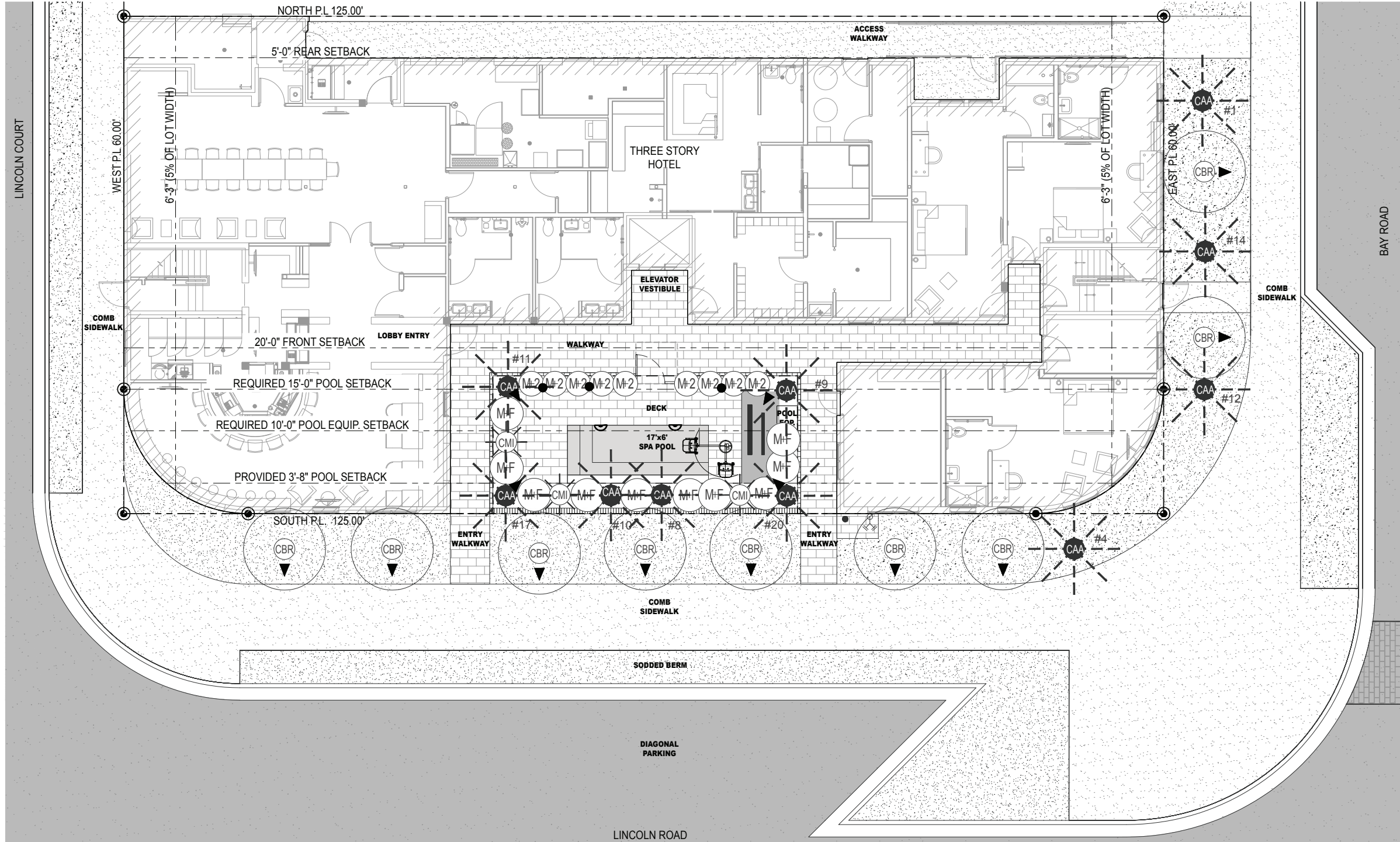
7 GROUNDCOVER PLANTING DETAIL

SCALE: N.T.S.



NOTE

1. SEE PLANTING PLAN FOR SPECIES.



1 LANDSCAPE LIGHTING PLAN

3/16" = 1'-0"



TO THE BEST OF OUR KNOWLEDGE,
THESE PLANS COMPLY WITH ALL
APPLICABLE BUILDING AND ZONING CODES

LIGHTING SPECIFICATION GENERAL NOTES

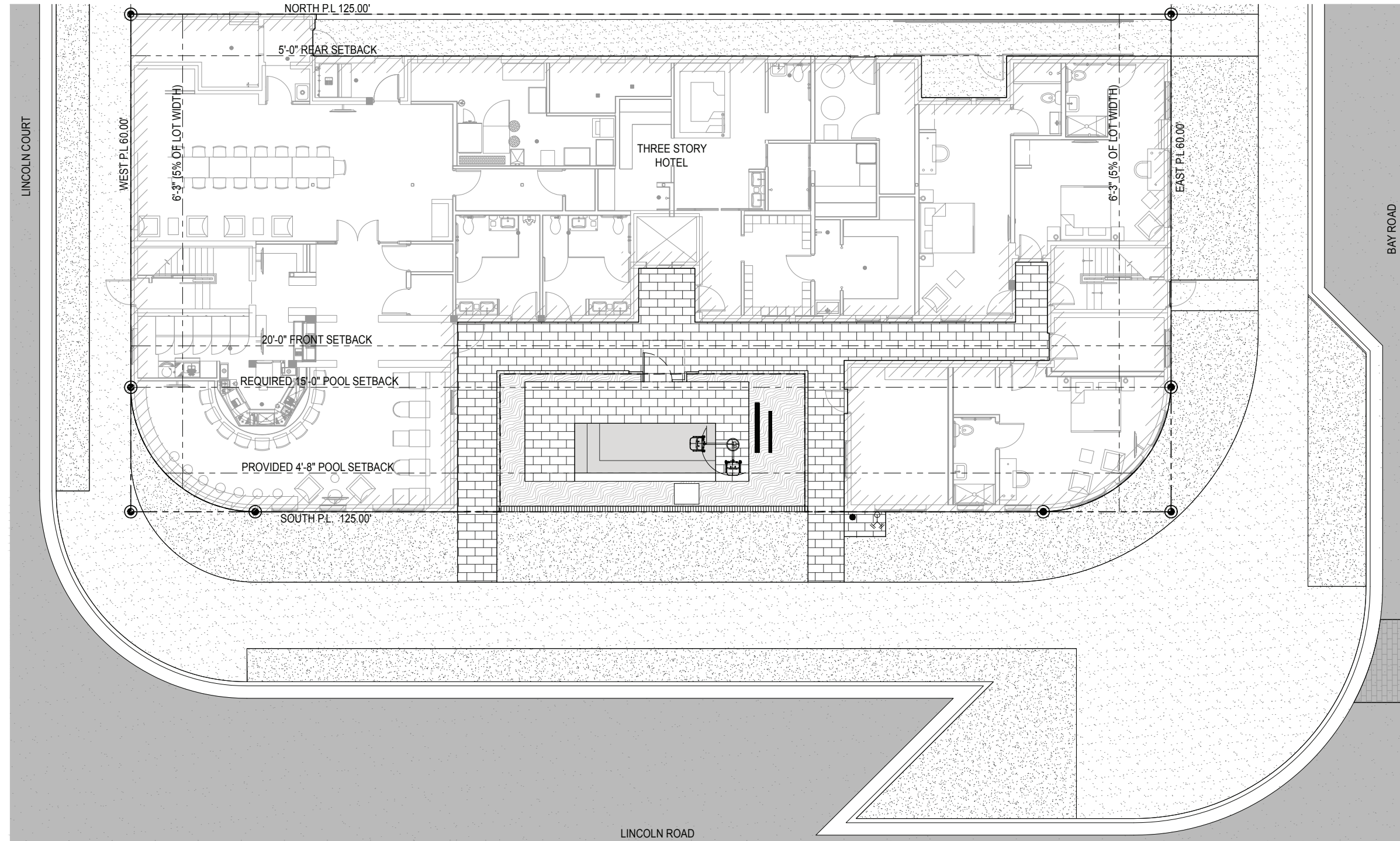
1. GENERAL REQUIREMENTS
- A. FOR ALL WIRING, ELECTRICAL CONNECTIONS AND POWER SUPPLY FOR LANDSCAPE LIGHT FIXTURES, SEE ELECTRICAL ENGINEERING DRAWINGS.
- B. LIGHTING FIXTURES AND OTHER LIGHTING MATERIAL SHALL BE LOCATED AS INDICATED ON DRAWINGS AND AS FURTHER SPECIFIED. ALL MATERIAL SHALL BE SUBJECT TO THE APPROVAL OF THE LANDSCAPE ARCHITECT & MEET E.O.R. FIXTURE PARTS AND COMPONENTS SHALL BE MADE OF MATERIALS APPROPRIATE TO THEIR FUNCTION AND AS SUCH SHALL BE RESISTANT TO CORROSION AND THERMAL AND MECHANICAL STRESSES ENCOUNTERED IN THE NORMAL APPLICATION AND FUNCTIONING OF THE FIXTURES. THE ELECTRICAL CONTRACTOR SHALL BE RESPONSIBLE FOR INSTALLING FIXTURES WITH PROPER VENTS AS NOT TO EXCEED THE TEMPERATURE RATING OF THE LIGHTING FIXTURES OR LAMPS.
- C. LOCATIONS OF FIXTURES ARE SHOWN DIAGRAMMATICALLY. FINAL LOCATIONS TO BE DETERMINED BY THE LANDSCAPE ARCHITECT ON-SITE AFTER THE INSTALLATION OF THE TREES.
- a. NOTIFY THE LANDSCAPE ARCHITECT ABOUT FIELD CONDITIONS AT VARIANCE WITH PLANS AND/OR SPECIFICATIONS BEFORE COMMENCING INSTALLATION.
- b. COORDINATE CONDITIONS AT VARIANCE WITH OTHER TRADES BEFORE INSTALLATION OF FIXTURES.
- D. LUMINAIRES SHALL BE DELIVERED TO THE PREMISE COMPLETE (EXCEPT AS NOTED OR SPECIFIED), INCLUDING MOUNTING DEVICES AND COMPONENTS NECESSARY FOR THE PROPER INSTALLATION AND OPERATION OF THE EQUIPMENT. LUMINAIRES SHALL INCLUDE LAMPS.
- E. BLEMISHED, DAMAGED, OR UNSATISFACTORY FIXTURES SHALL BE REPLACED IN A MANNER SATISFACTORY TO LANDSCAPE ARCHITECT AT NO COST TO THE PROJECT OWNER.
- F. ELECTRICAL CONTRACTOR TO INSTALL LOUVERS, SPREAD LENSES, AND COLOR FILTERS AS SPECIFIED AND PROVIDE LABOR TO FOCUS ALL ADJUSTABLE FIXTURES. ADDITIONALLY, ELECTRICAL CONTRACTORS SHALL PROVIDE FOR FOUR (4) NON-CONSECUTIVE DAYS TO ADJUST AIMING, LAMPING, AND COLORING OF LIGHTING FIXTURES WITH THE DIRECTION OF THE LANDSCAPE ARCHITECT. THIS MAY INCLUDE RELAMPING FIXTURES WITH DIFFERENT WATTAGES OR BEAM SPREADS AS DIRECTED BY THE LANDSCAPE DESIGNER. ELECTRICAL CONTRACTOR TO PROVIDE LADDERS AND LIFTS AS NECESSARY.
- G. TRANSFORMERS SHOULD HAVE THE CAPACITY FOR FUTURE ADDITION OF LIGHTING.
- H. LANDSCAPE LIGHTING AND PLANTING AREAS SHALL BE COMPOSED OF GROUND BURIAL CABLES FOR FLEXIBILITY OF ON-SITE ADJUSTMENT OF FIXTURE LOCATION.
2. WARRANTY
- ALL LIGHTING FIXTURES SHALL BE COVERED BY A MINIMUM ONE YEAR WARRANTY COVERING WORKMANSHIP AND MATERIAL. IF THE FIXTURES ARE SUPPLIED BY THE INSTALLING CONTRACTOR THE GUARANTEE SHALL INCLUDE THE LABOR TO REPLACE DEFECTIVE DEVICES.

LANDSCAPE LIGHTING FIXTURE SCHEDULE

QTY.	SYMBOL	REF	APPLICATION	MANUFACTURER	MODEL NUMBER	DESCRIPTION	NOTES
13		L1	DIRECTIONAL LIGHT	AURORA LIGHT	TELLURIDE HSL16-S	MATERIAL: BRASS; SHROUD: T80; LIGHT SOURCE: LED; [7] 7.5W; [270] 2700K; ACCESSORIES: T80; AMS MOUNT: T80; FINISH: [BLP] BRONZE LIVING PATINA	U/L LISTED FOR WET LOCATION
3		L2	PATH LIGHT	AURORA LIGHT	LPL-EXT 18"-36"	WATTAGE [8] 8W; SHADE: [77] 7"; LED: [270] 2700K; LENS: [0] CLEAR; P. MOUNT: T80; FINISH: [BLP] BRONZE LIVING PATINA	U/L LISTED FOR WET LOCATION
2		L3	POOL LIGHT	TO BE COORDINATED WITH POOL AND ELECTRICAL ENGINEERS	TO BE COORDINATED WITH POOL AND ELECTRICAL ENGINEERS	TO BE COORDINATED WITH POOL AND ELECTRICAL ENGINEERS	U/L LISTED FOR WET LOCATION



PROPOSED IRRIGATION PLAN



1 IRRIGATION PLAN
3/16" = 1'-0"

IRRIGATION PLANS SHALL PROVIDE ADEQUATE IRRIGATION TO ALL PLANTING AREAS IN COMPLIANCE WITH THE CITY OF MIAMI BEACH CODE. FULL IRRIGATION PLANS TO BE DEVELOPED FOLLOWING DRB APPROVAL.

