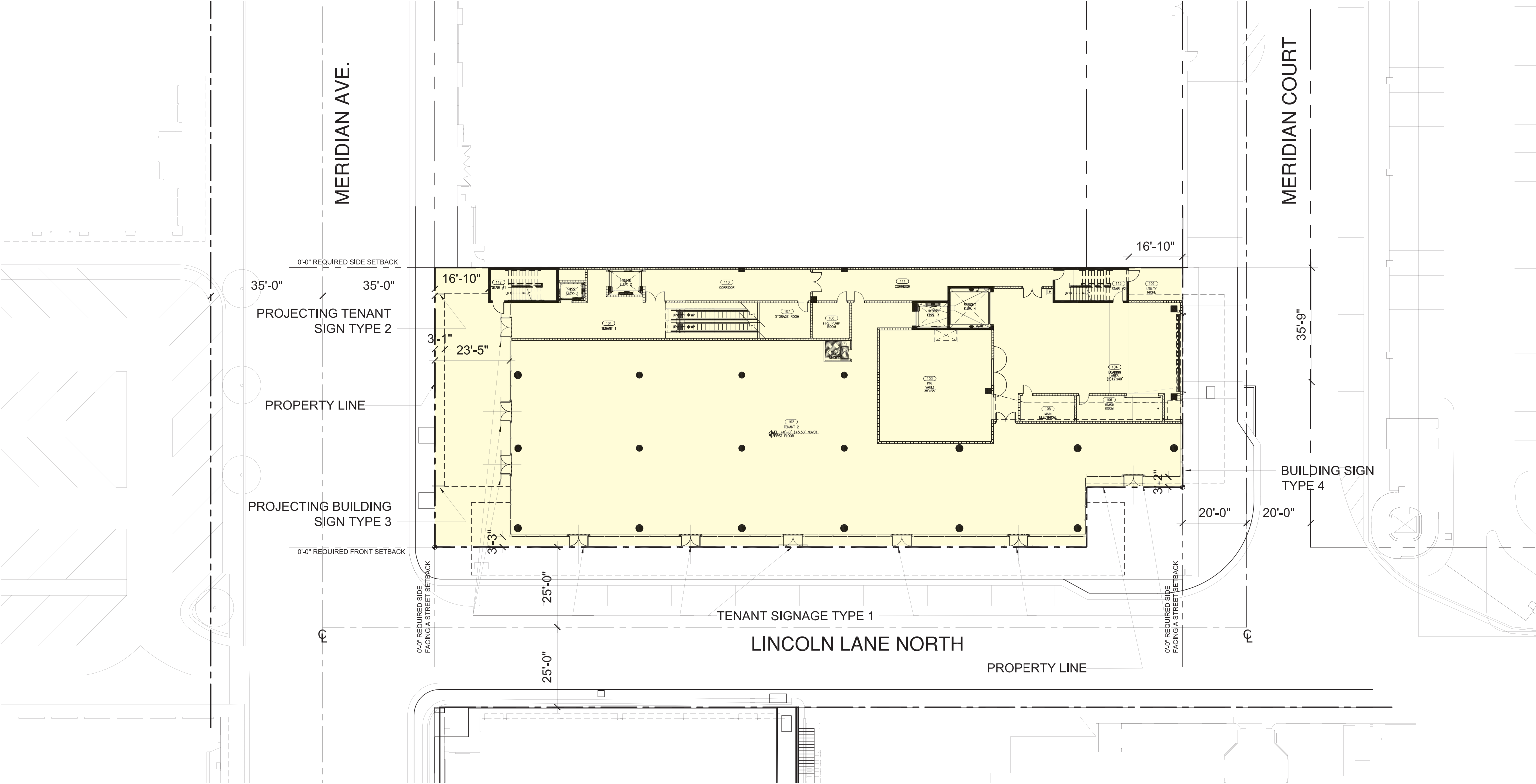


G-1.07 SITE PLAN



Architectural floor plan of a building with various rooms, corridors, and signs. The plan includes dimensions, room numbers, and annotations for construction and signage. Key features include a kitchen exhaust riser, grease ducts, and various storage rooms. Signs are labeled as Suspended Projecting Tenant Signs 1A through 1J. The plan also shows a property line and a future canopy line.

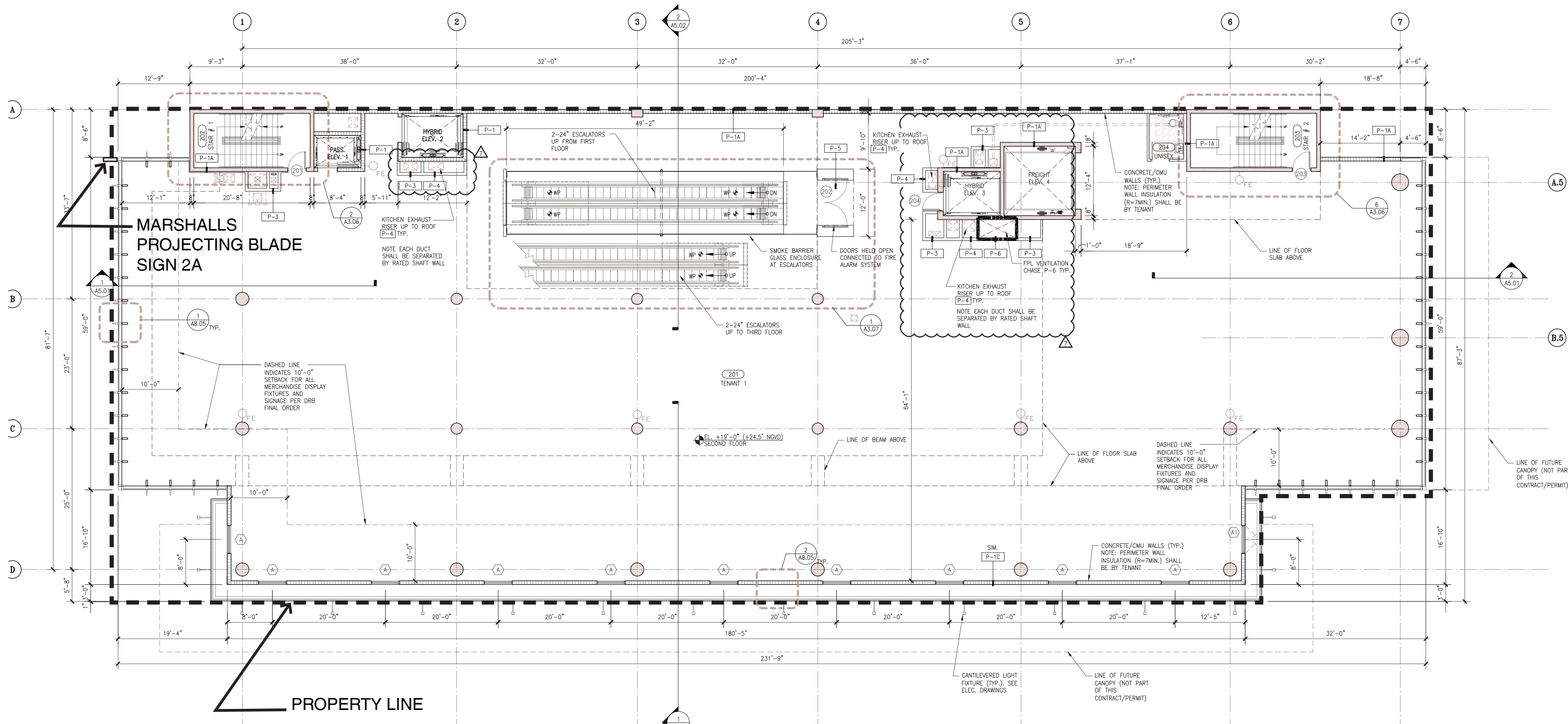
Signage and Annotations:

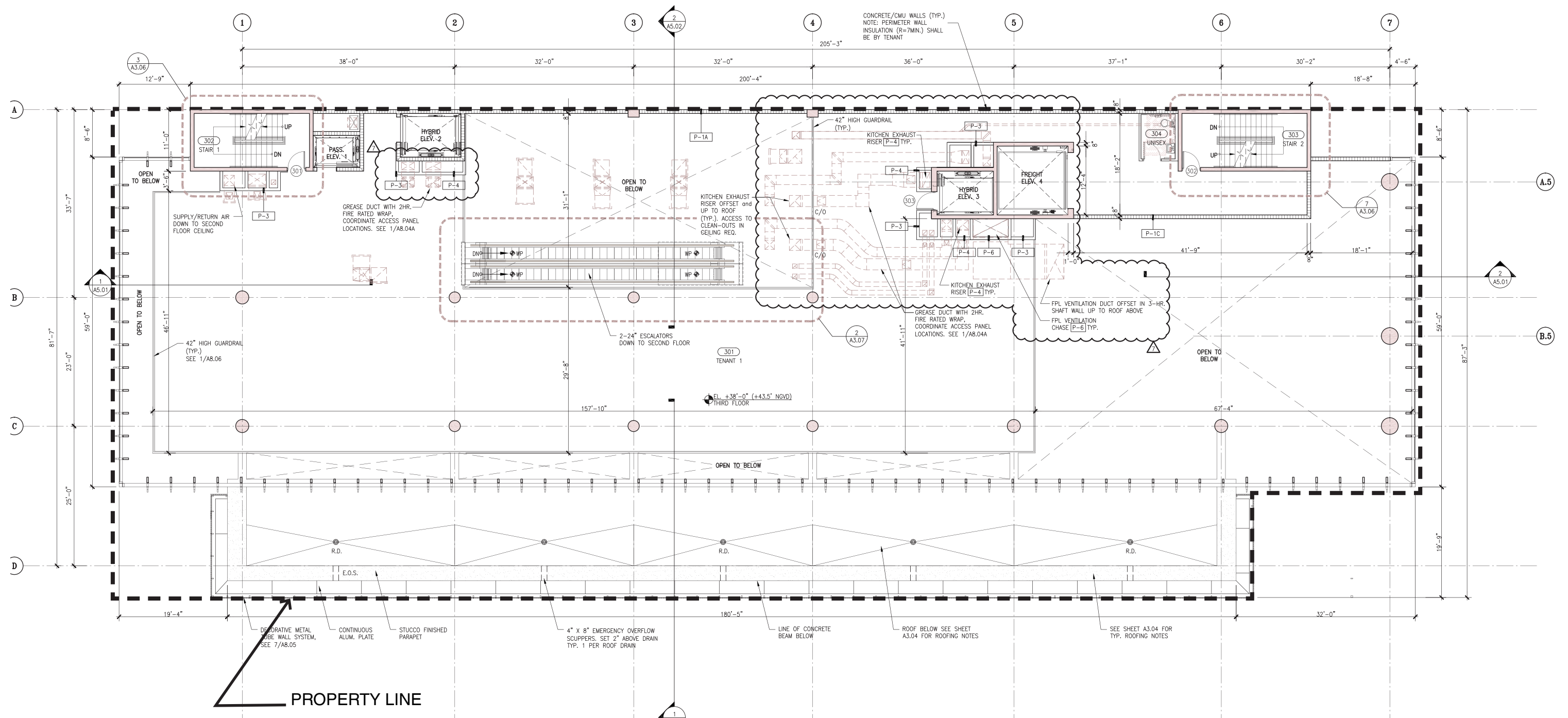
- SUSPENDED PROJECTING TENANT SIGN 1A:** Located at the top left of the plan.
- SUSPENDED PROJECTING TENANT SIGN 1B:** Located in the middle left of the plan.
- SUSPENDED PROJECTING TENANT SIGN 1C:** Located in the middle left of the plan, below Sign 1B.
- SUSPENDED PROJECTING TENANT SIGN 1D:** Located at the bottom left of the plan.
- SUSPENDED PROJECTING TENANT SIGN 1E:** Located in the middle of the plan.
- SUSPENDED PROJECTING TENANT SIGN 1F:** Located in the middle of the plan, below Sign 1E.
- SUSPENDED PROJECTING TENANT SIGN 1G:** Located in the middle of the plan, below Sign 1F.
- SUSPENDED PROJECTING TENANT SIGN 1H:** Located at the bottom right of the plan.
- SUSPENDED PROJECTING TENANT SIGN 1I:** Located at the bottom right of the plan, below Sign 1H.
- SUSPENDED PROJECTING TENANT SIGN 1J:** Located at the bottom right of the plan, below Sign 1I.

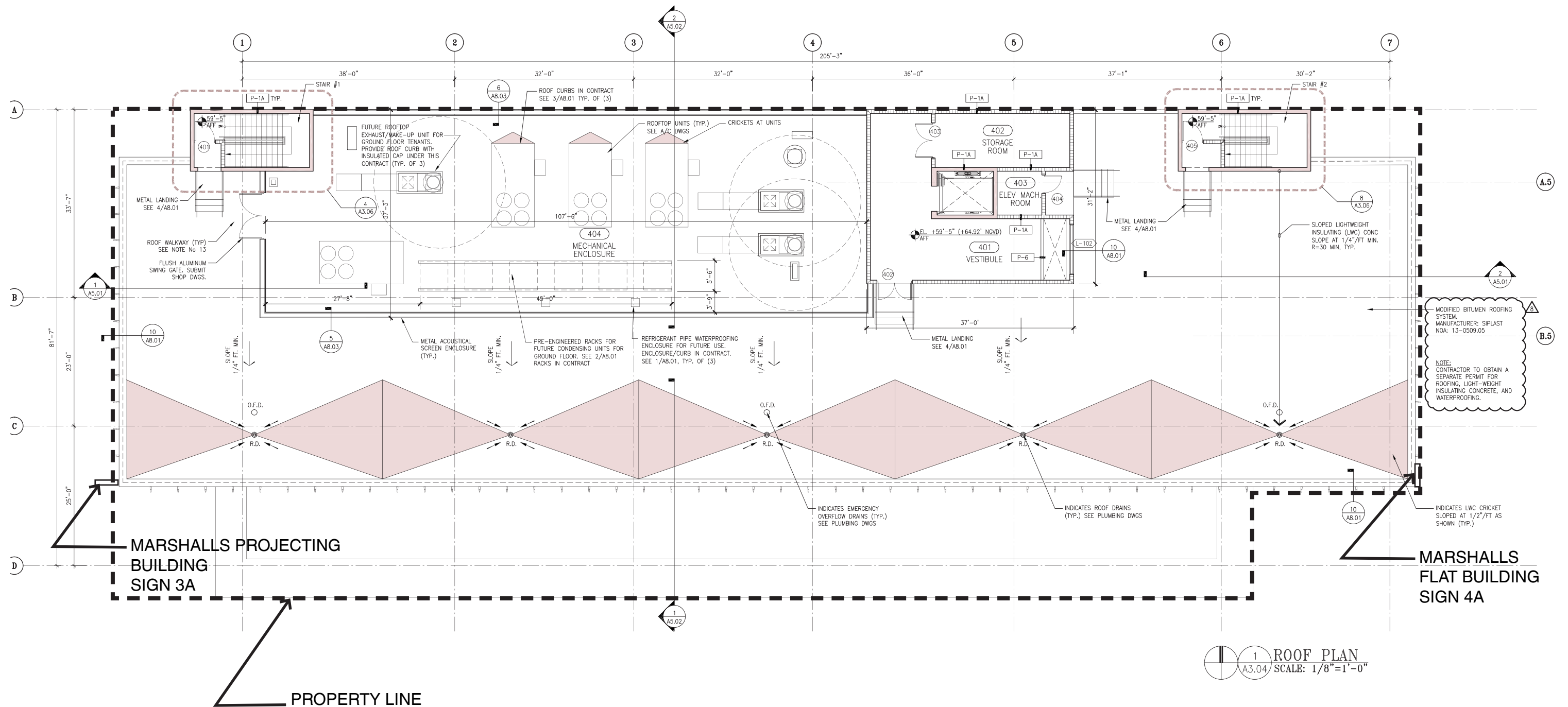
Other Annotations:

- PROPERTY LINE:** Indicated by a dashed line on the left side of the plan.
- LINE OF FUTURE CANOPY ABOVE (NOT PART OF THIS CONTRACT/PERMIT):** Indicated by a dashed line on the right side of the plan.
- SEE CIVIL DWG'S FOR CONCRETE SIDEWALK:** Located at the bottom left of the plan.
- SEE CIVIL DWG'S FOR GRADING:** Located at the top right of the plan.
- BOLLARD SEE 9/A8.03 TYP. (2):** Located on the right side of the plan.
- DUAL UNIT TRASH & RECYCLING BINS (TYP.):** Located at the bottom right of the plan.

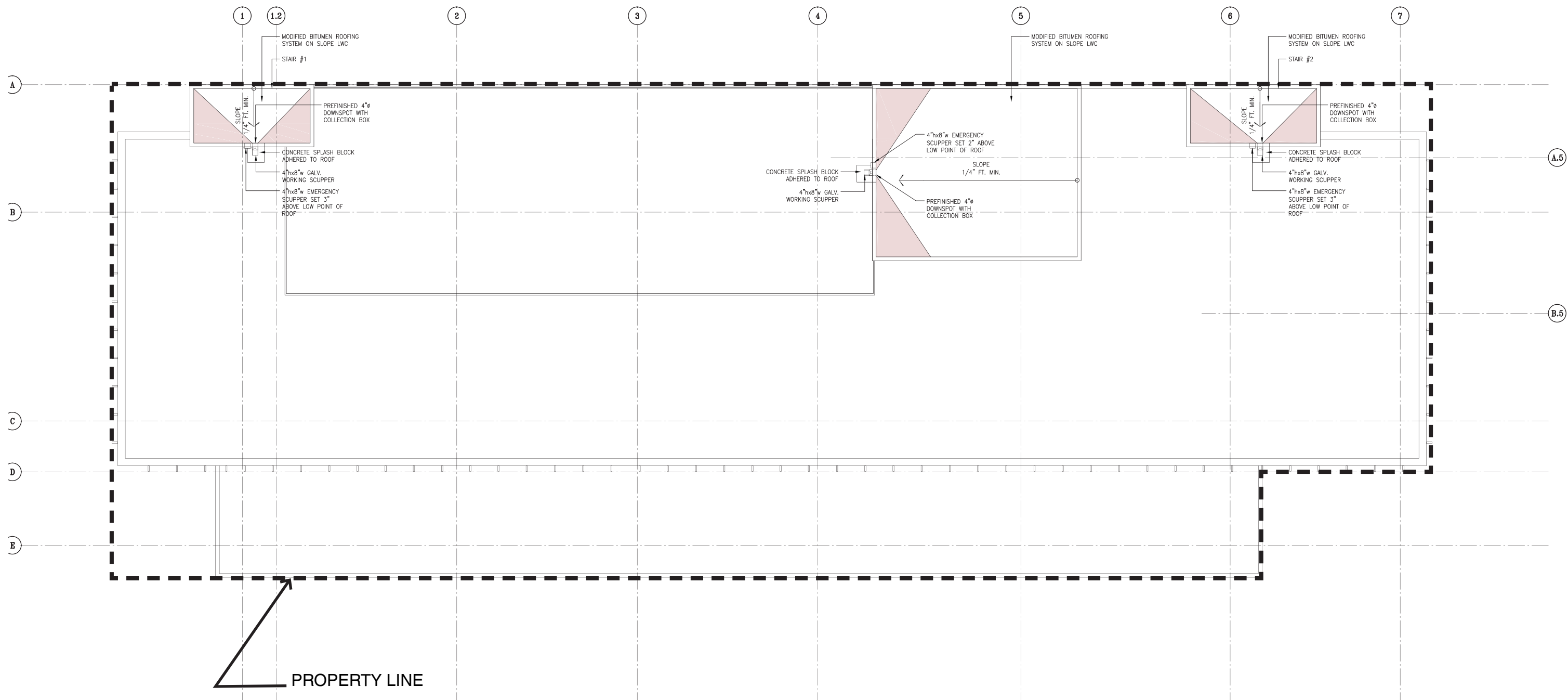
A-1.02 SECOND FLOOR PLAN (AS PERMITTED, SIGNAGE ONLY ADDED)



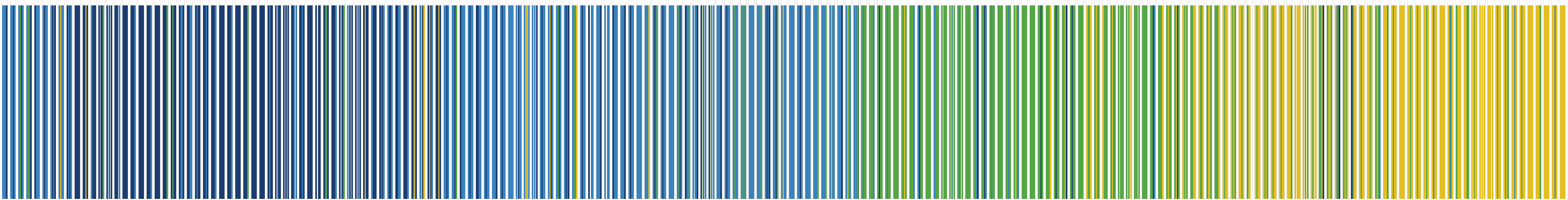
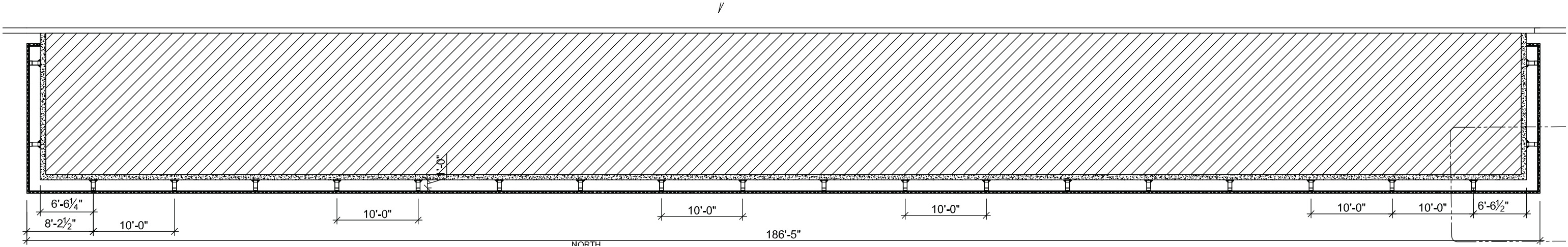




A-1.05 UPPER ROOF PLAN (AS PERMITTED)



A-4.03 PROPOSED TUBE COLORS



ALUMINUM TUBE COLORS
RAL 5012 LIGHT BLUE, 5019 CAPRI BLUE, 6018 YELLOW GREEN, 1003
SIGNAL YELLOW,
PPG FLUOROPOLYMER PAINT COLOR ARCADIA SILVER

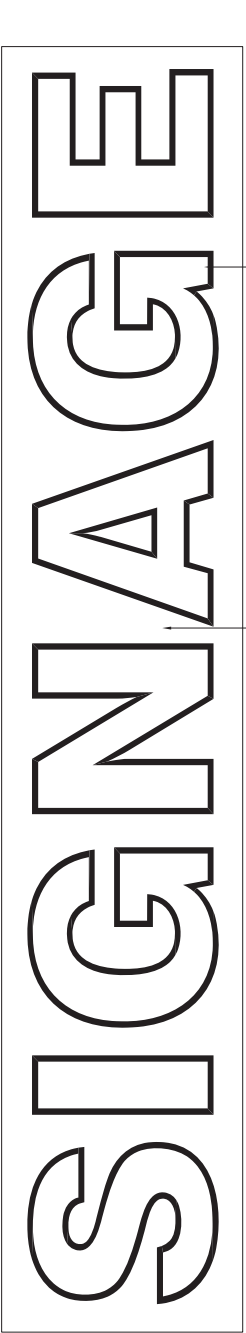
A-5.01 PROPOSED SIGNAGE: BUILDING SIGN TYPE 3, TENANT SIGN TYPE 2



OPEN FACE CHANNEL LETTERS



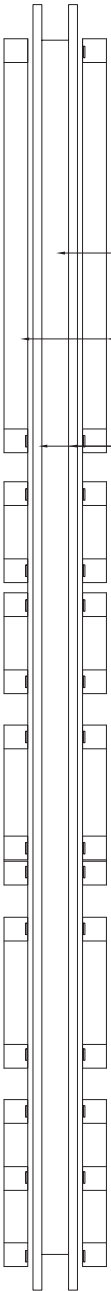
BLADE SIGN



BLUE OPEN CHANNEL
LETTERS WITH
LED 'NEON'

WHITE FROSTED
GLASS BACKING
PANEL

ELEVATION



BRUSHED ALUMINUM
SIDE PANEL

BLUE OPEN CHANNEL
LETTERS WITH
LED 'NEON'

WHITE FROSTED
GLASS BACKING
PANEL

SECTION

SUSPENDED ALUMINUM CHANNEL LETTERS

A-5.02 PROPOSED SIGNAGE: TENANT SIGN TYPE 1



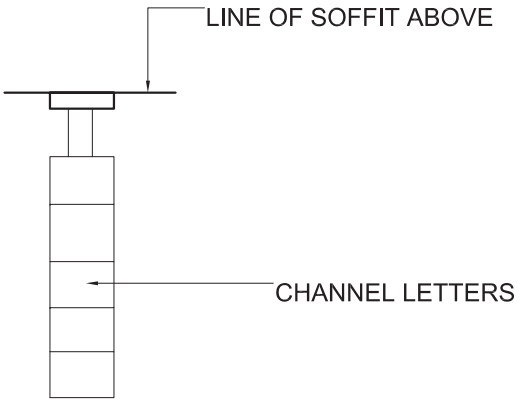
CHANNEL LETTERS



SIMILAR PROJECTING SIGN



ELEVATION

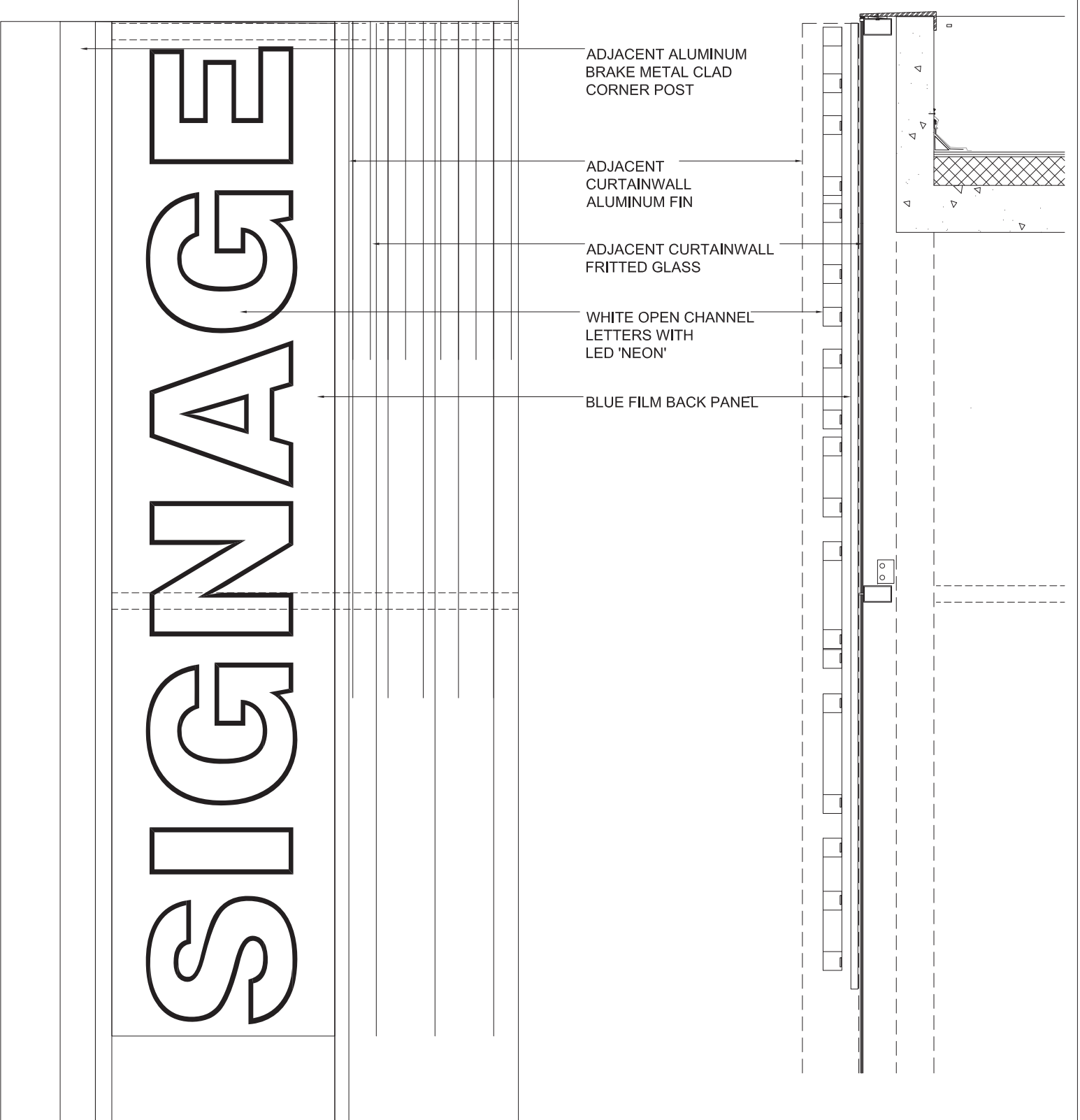


SECTION

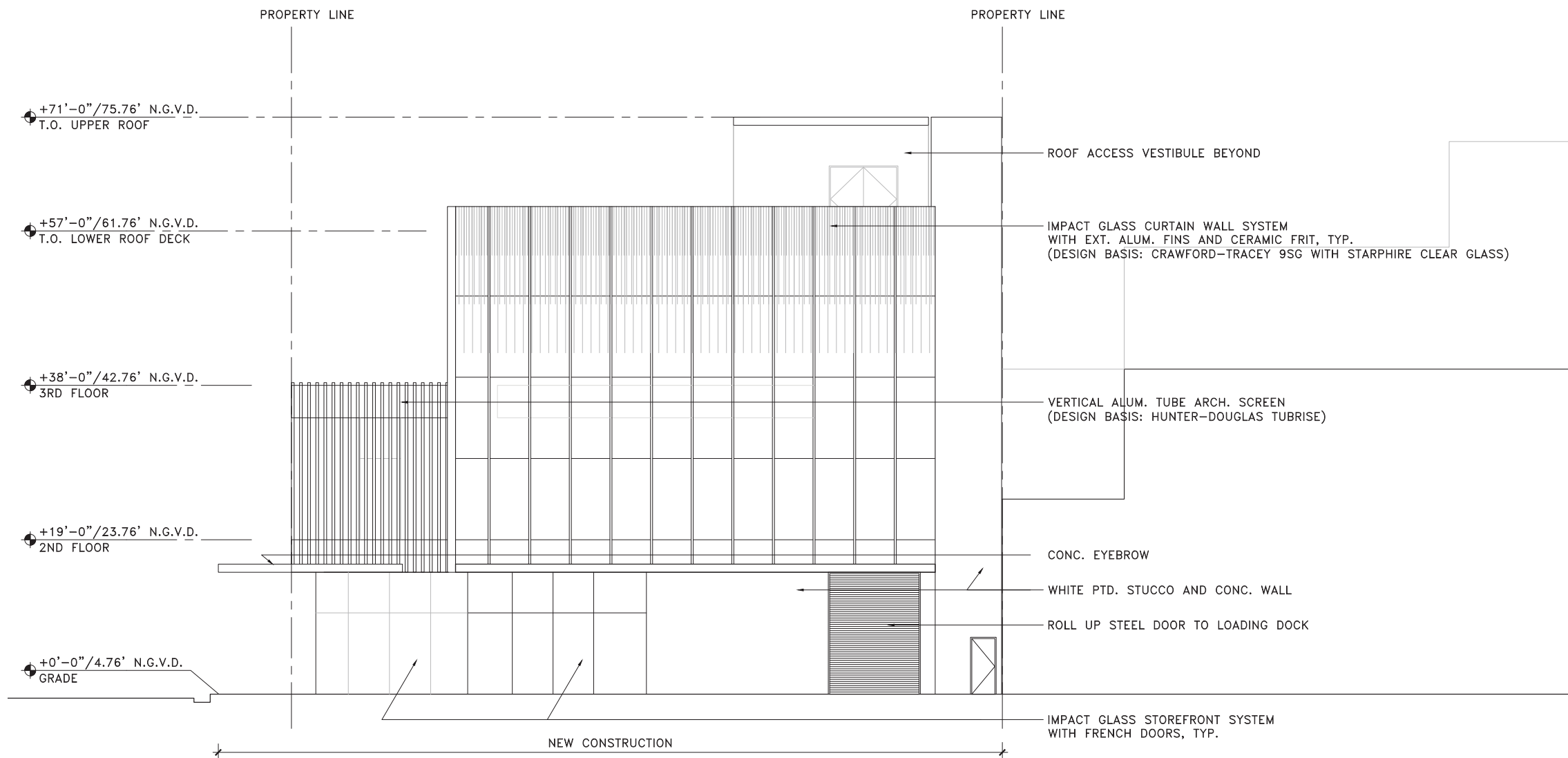
A-5.03 PROPOSED SIGNAGE: BUILDING SIGN TYPE 4



OPEN FACE CHANNEL LETTERS

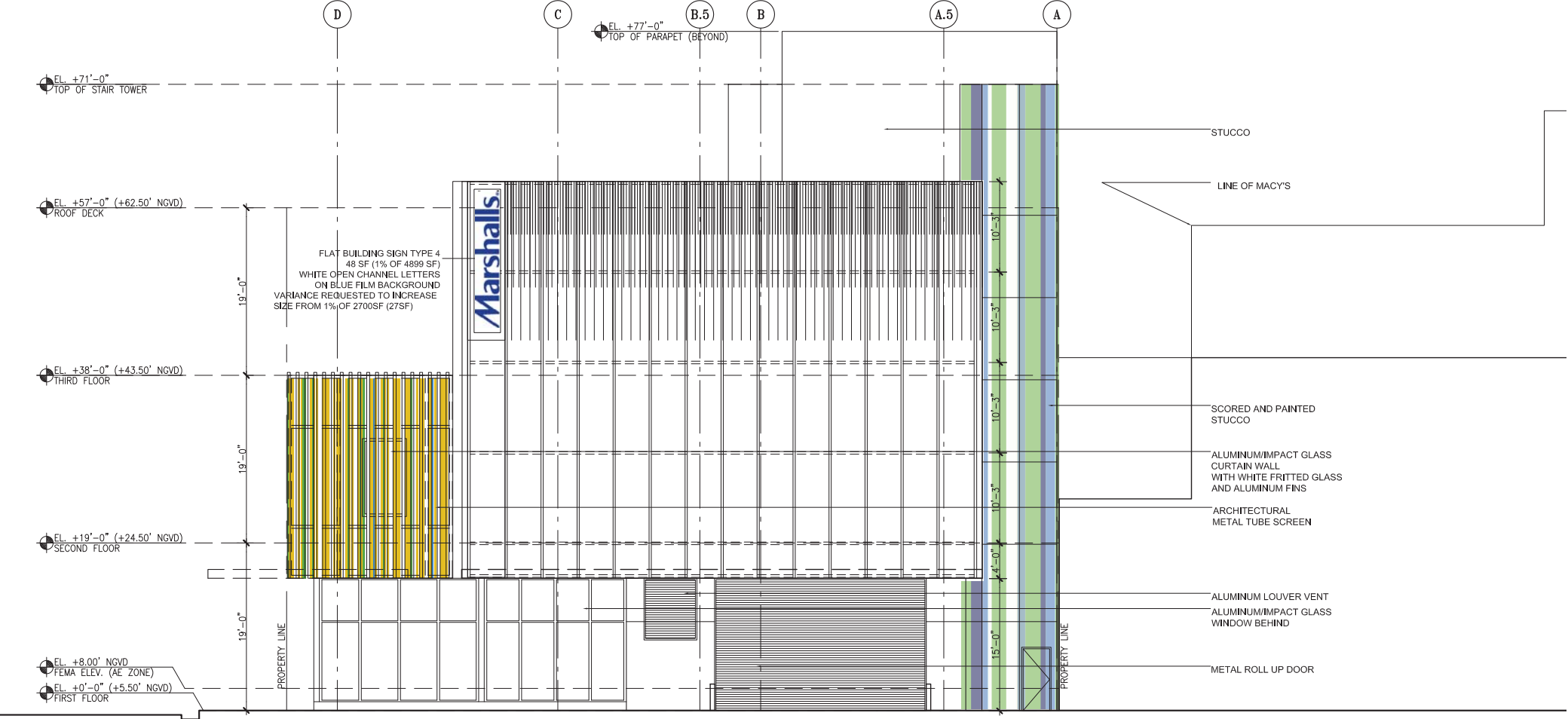


A-2.01A DRB APPROVED EAST ELEVATION

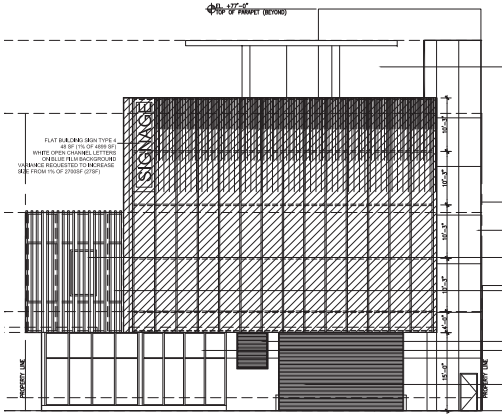


DRB APPROVED EAST ELEVATION

A-2.01B PROPOSED EAST ELEVATION

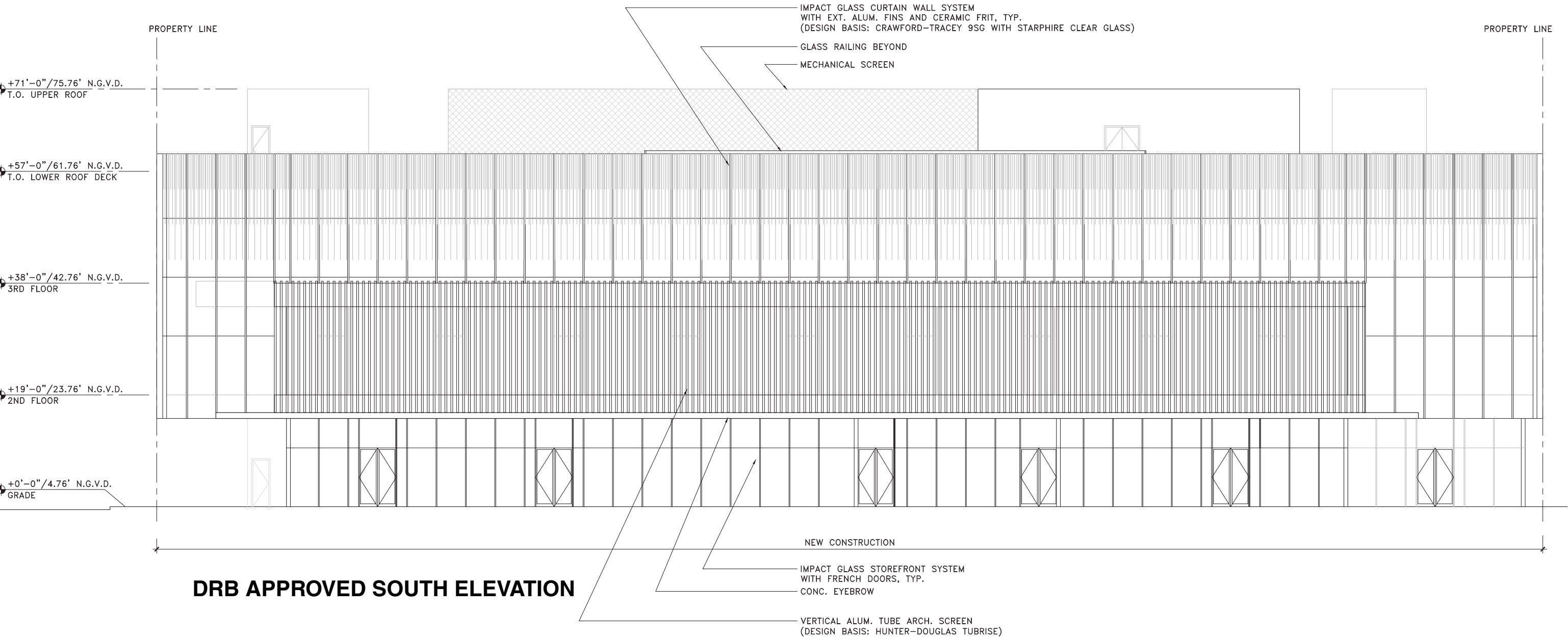


PROPOSED EAST ELEVATION

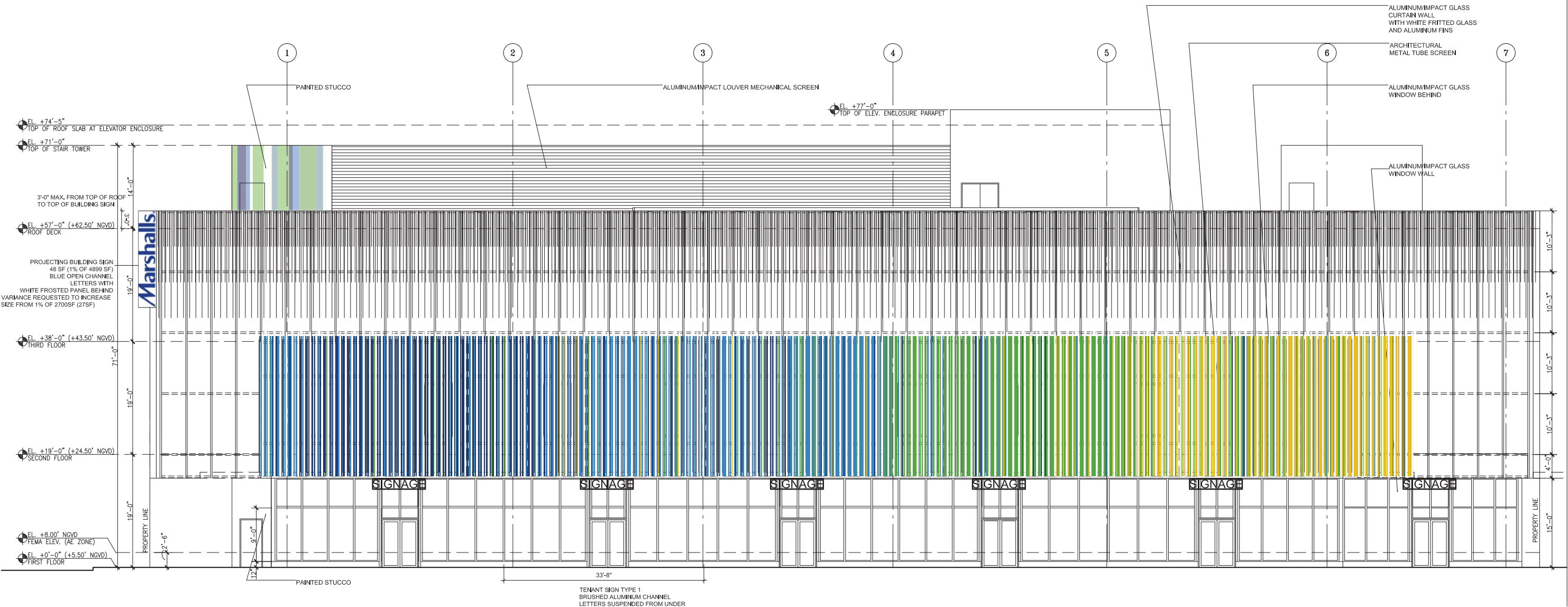


FACADE CALCULATION 2,700 SF

A-2.02A DRB PREVIOUSLY APPROVED SOUTH ELEVATION

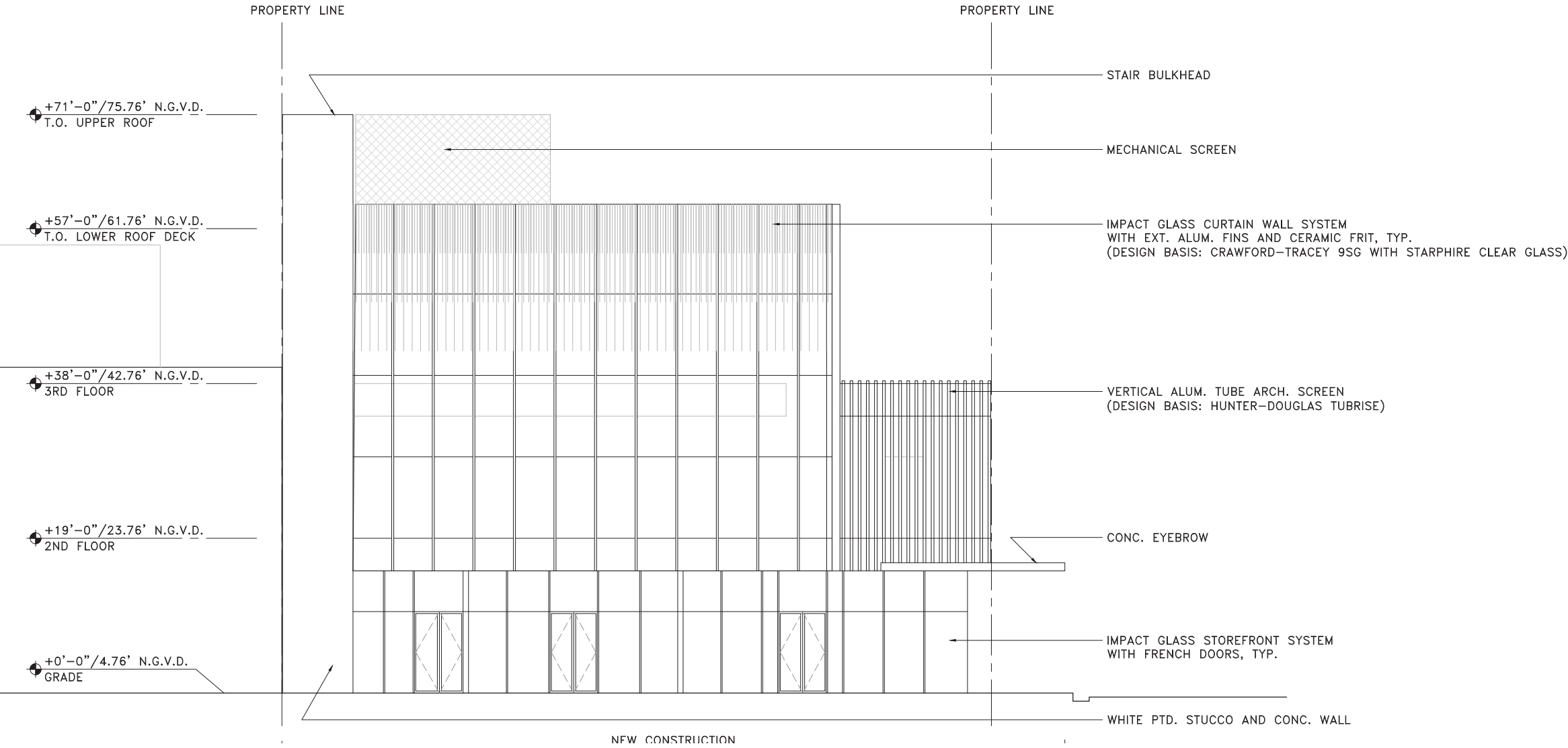


A-2.02B PROPOSED SOUTH ELEVATION



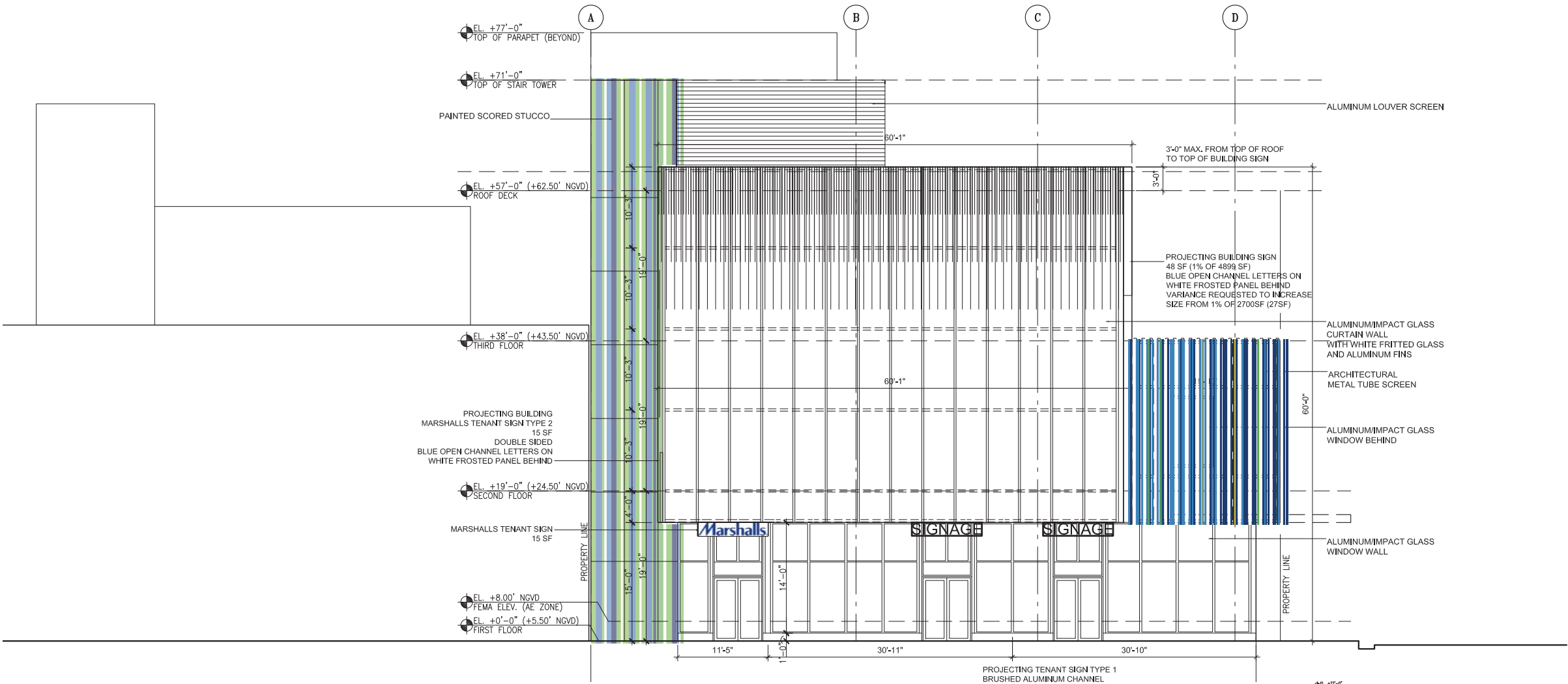
PROPOSED SOUTH ELEVATION

A-2.03A DRB APPROVED WEST ELEVATION

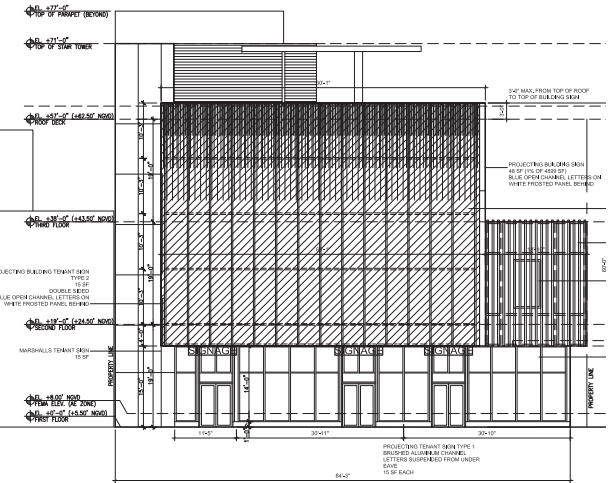


DRB APPROVED WEST ELEVATION

A-2.03B PROPOSED WEST ELEVATION



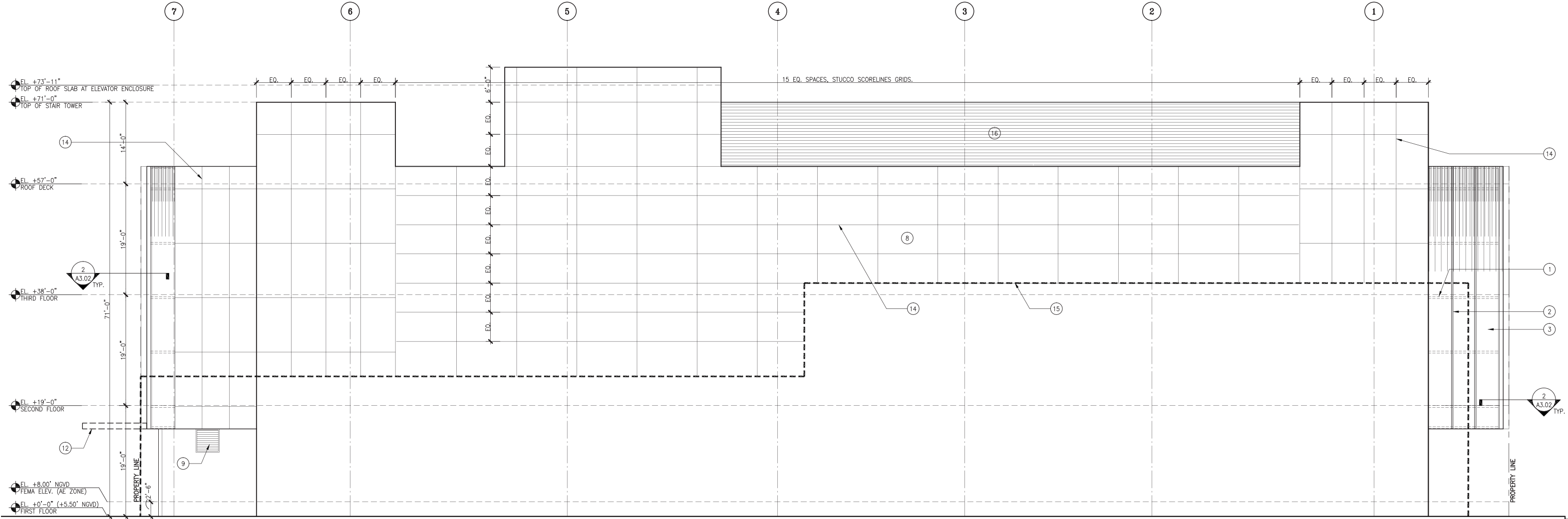
PROPOSED WEST ELEVATION

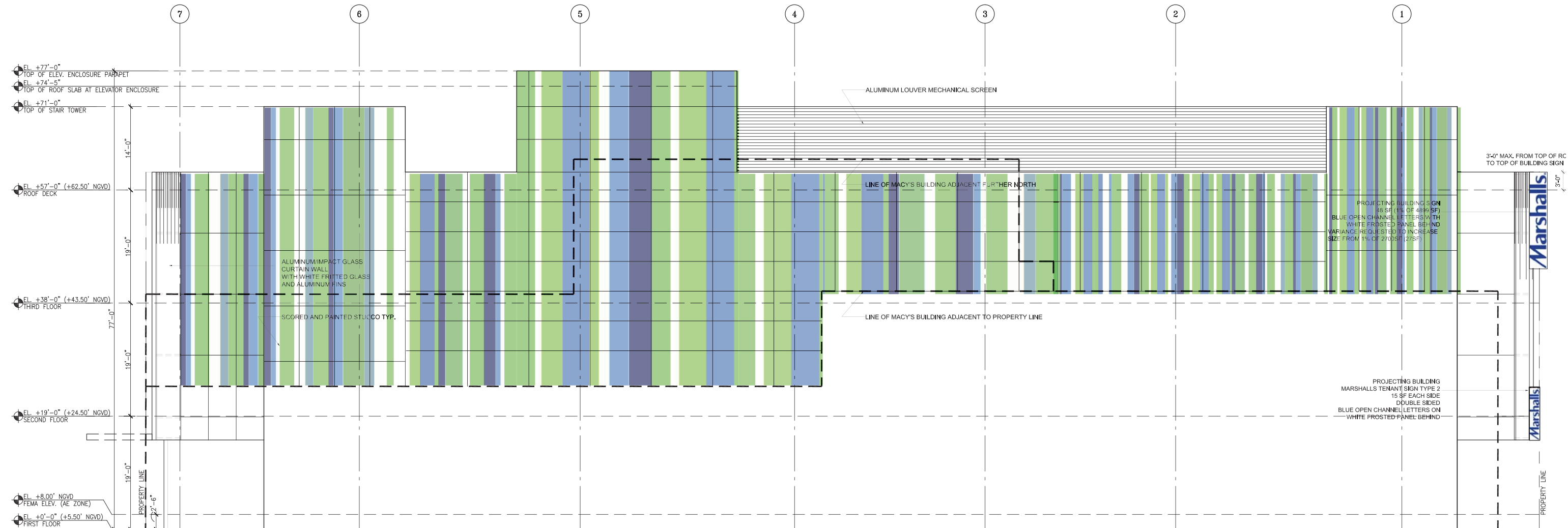


FACADE CALCULATION 2700 SF

A-2.04A PREVIOUSLY APPROVED NORTH ELEVATION (PERMITTED)

* NO NORTH ELEVATION WAS INCLUDED IN THE PREVIOUS DRB SUBMITTAL





PROPOSED NORTH ELEVATION

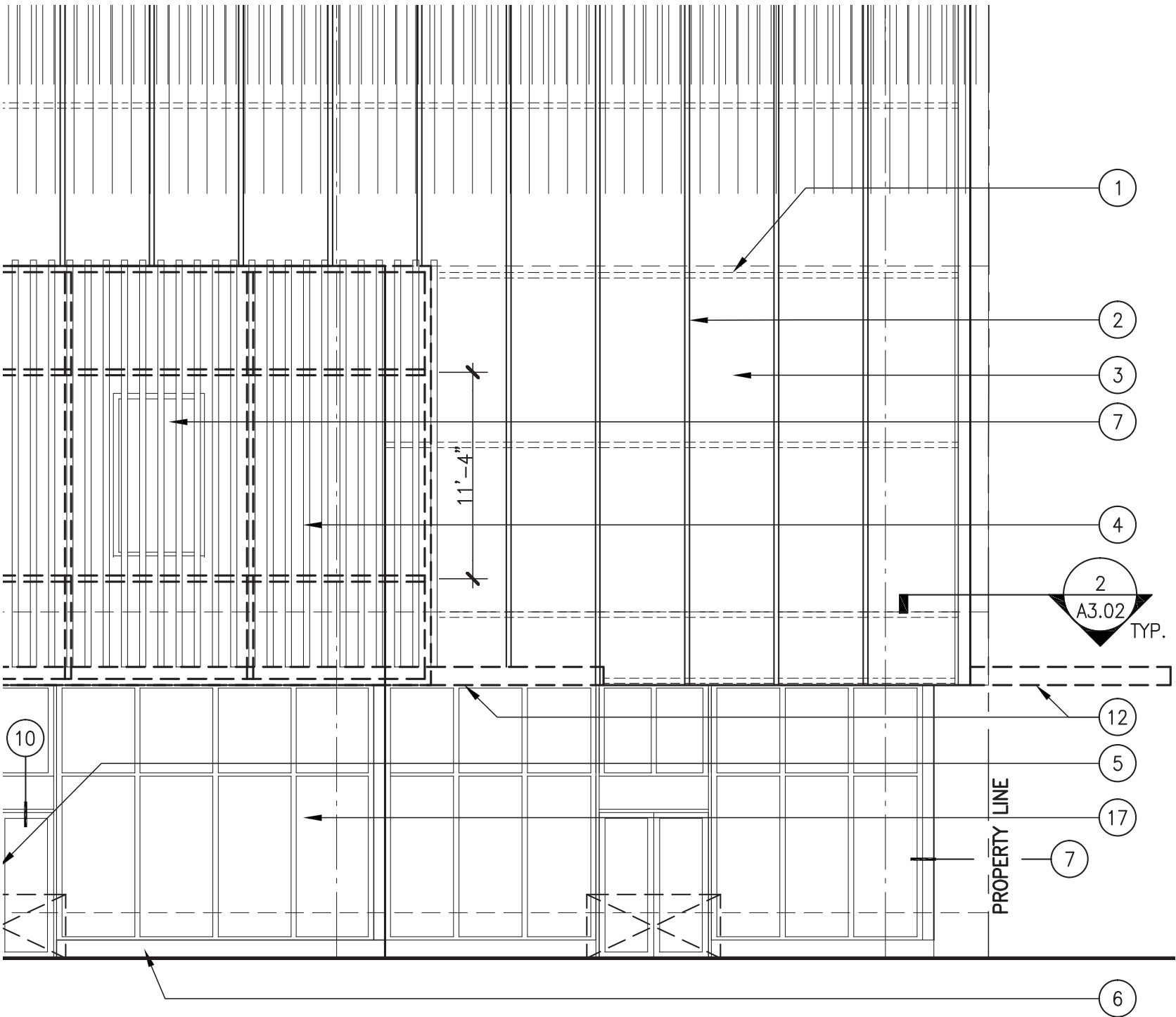
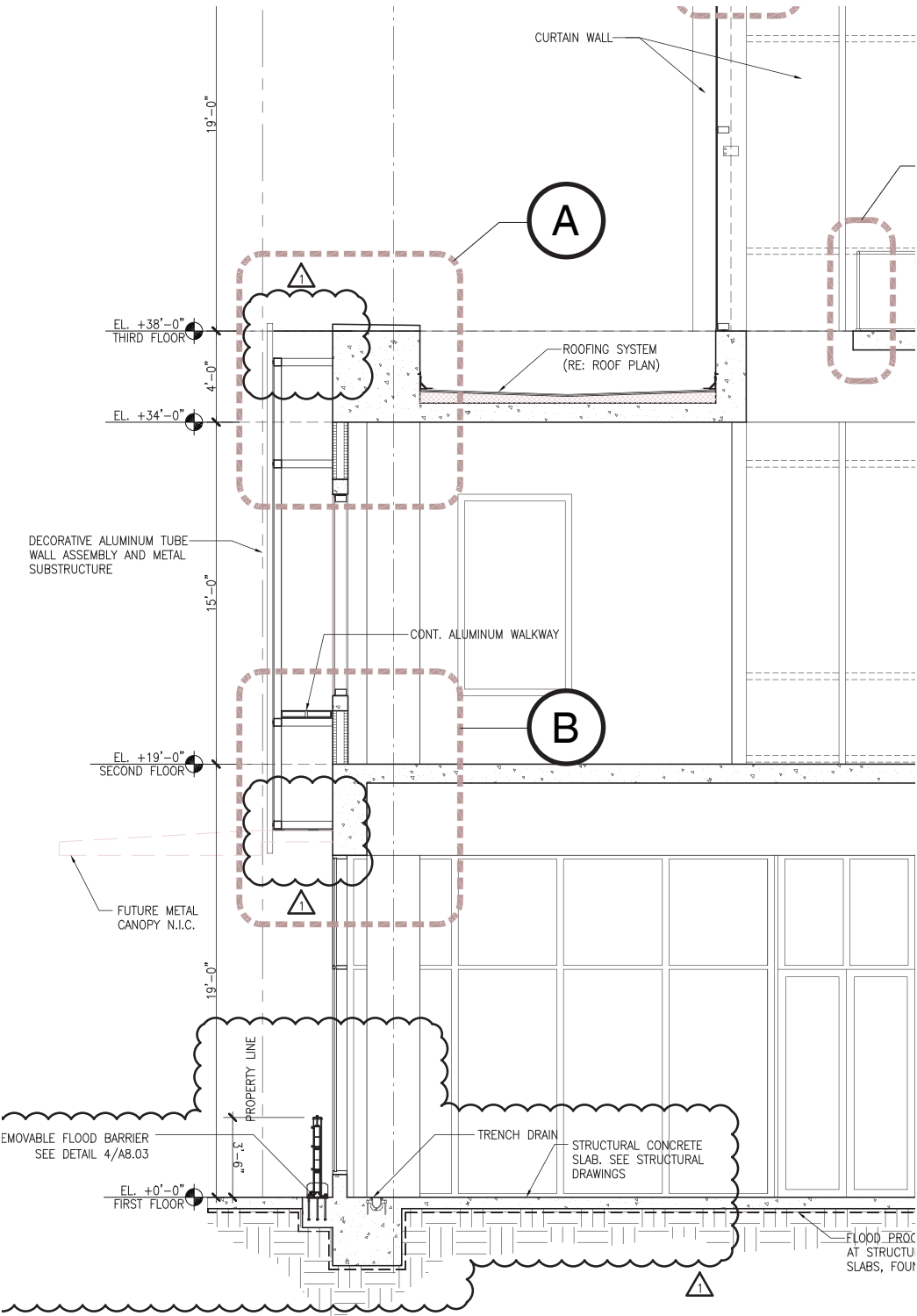


MACY'S AERIAL FROM THE SOUTH



MACY'S AERIAL FROM THE NORTH

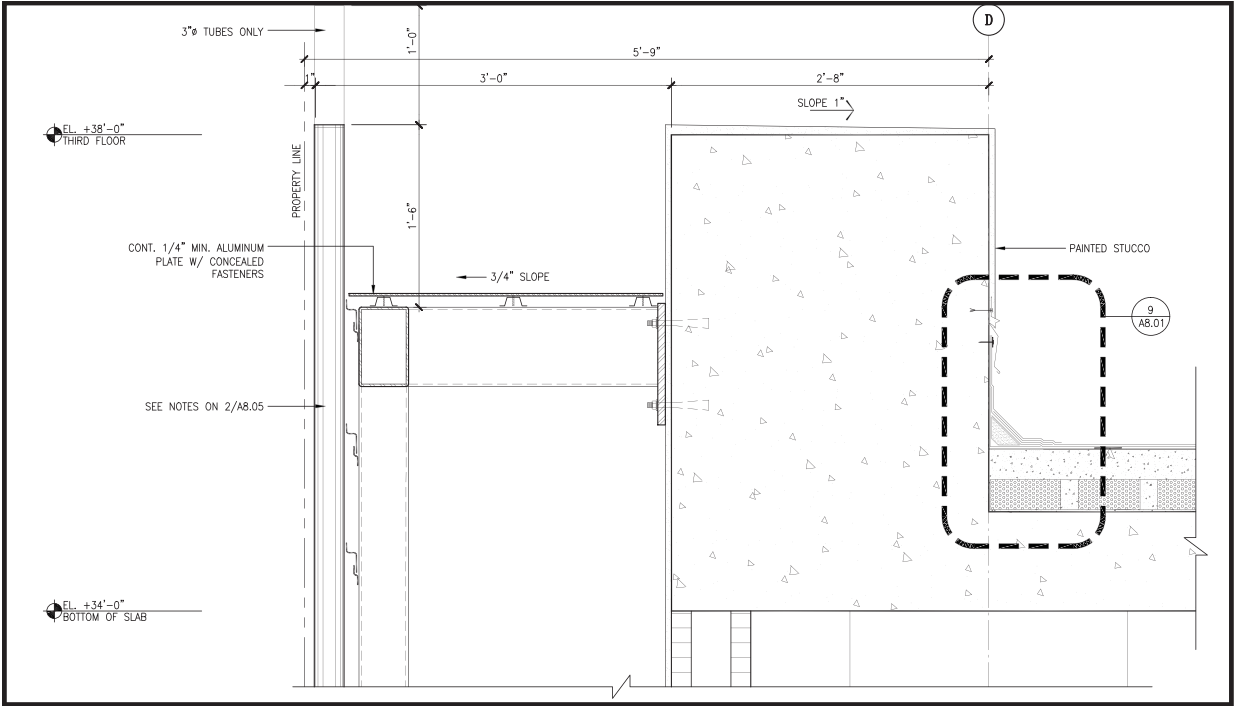
A-4.01 PERMITTED TUBE FACADE DETAILS



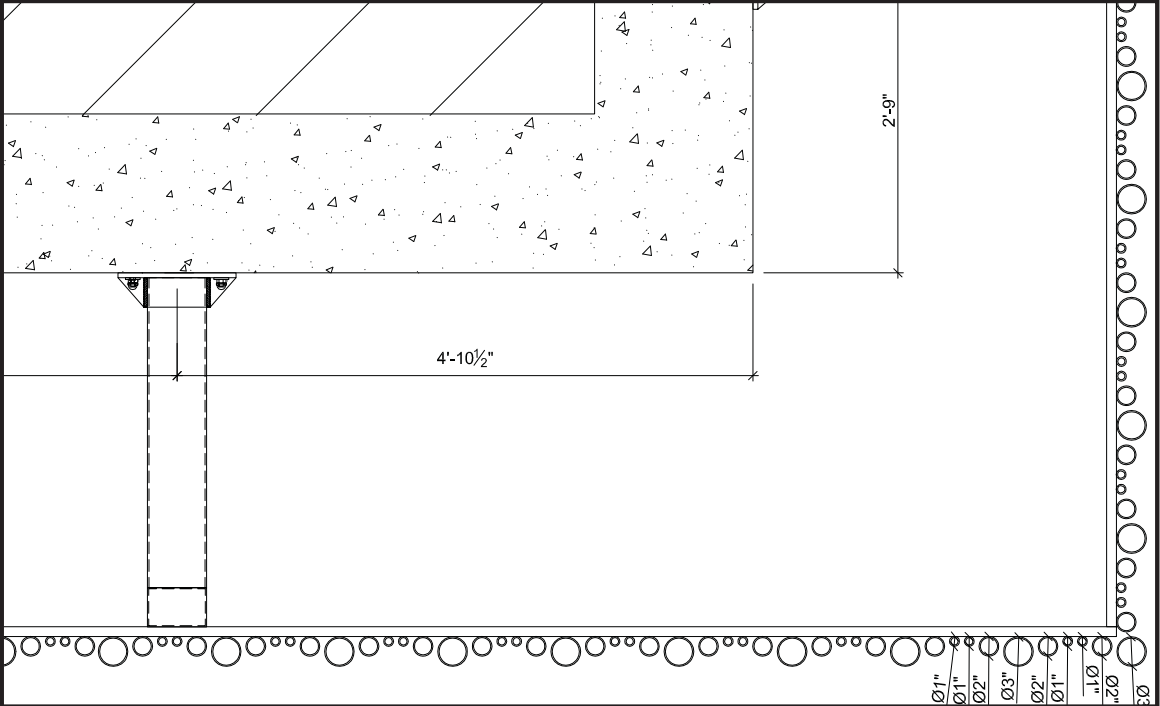
KEY NOTES LEGEND

- 1 LARGE-MISSILE GLASS AND ALUMINUM CURTAIN WALL SYSTEM. BASIS-OF-DESIGN: "PRO-TECH 75G" BY CRAWFORD-TRACEY NOA: 12-0223.38
- 2 VERTICAL METAL FINNS AT CURTAIN WALL. VERTICAL MULLIONS. BASIS-OF-DESIGN: "H-09406/H-09407" BY CRAWFORD-TRACEY
- 3 LARGE-MISSILE INSULATED GLASS with CERAMIC FRIT AS SHOWN. BASIS-OF-DESIGN: "VNE 13-63" BY VIRACON. U-VALUE (SUMMER): .26 SHADING COEFFICIENT: .33 SHGC: .29
- 4 ARCHITECTURAL METAL TUBE SCREEN. BASIS-OF-DESIGN: "TUBE WALL ASSEMBLY" (ON METAL SUB-FRAMING SYSTEM) BY ARKTURA. SUBMIT SIGNED AND SEALED ENGINEERED SHOP DRAWINGS AND CALCULATIONS
- 5 LARGE-MISSILE IMPACT GLASS AND ALUMINUM ENTRANCE DOORS
- 6 12" HIGH CONCRETE CURB WITH PAINTED SKIM COAT STUCCO
- 7 WINDOW TO MATCH CURTAIN WALL SYSTEM
- 8 PAINTED STUCCO
- 9 PRE-FINISHED ALUM. LOUVER
- 10 ELECTRIC OVERHEAD DOOR, PRE-FINISHED
- 11 HOLLOW METAL DOOR, PAINTED
- 12 FUTURE METAL CANOPY (NOT PART OF THIS PERMIT)
- 13 REMOVABLE METAL FLOOD BARRIERS
- 14 STUCCO SCORELINES ALIGNED WITH HORIZONTAL MULLIONS OF CURTAIN WALL TYP.
- 15 LINE OF MACY'S BUILDING (BEHIND VIEW)
- 16 PRE-FINISHED ALUMINUM LOUVERS AT MECHANICAL ENCLOSURE
- 17 LARGE-MISSILE GLASS AND ALUMINUM WINDOW WALL SYSTEM/FLOOD BARRIER WITH INSULATED GLAZING SYSTEM SHALL BE DESIGNED TO RESIST WIND PRESSURES, IMPACT AND FEMA REQUIREMENTS FOR FLOOD BARRIER BASIS-OF-DESIGN: TRAINOR/ALDORA SYSTEM BY SAVANNAH TRIMS

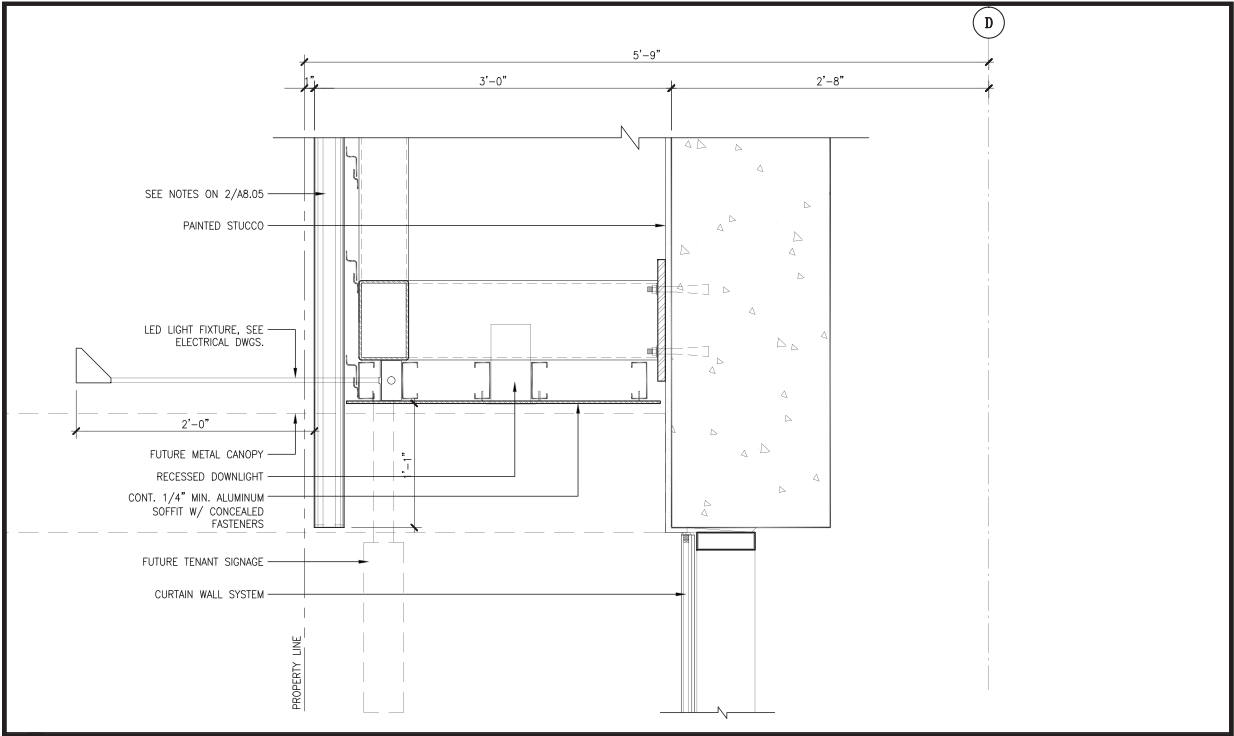
A-4.02 PERMITTED TUBE FACADE DETAILS



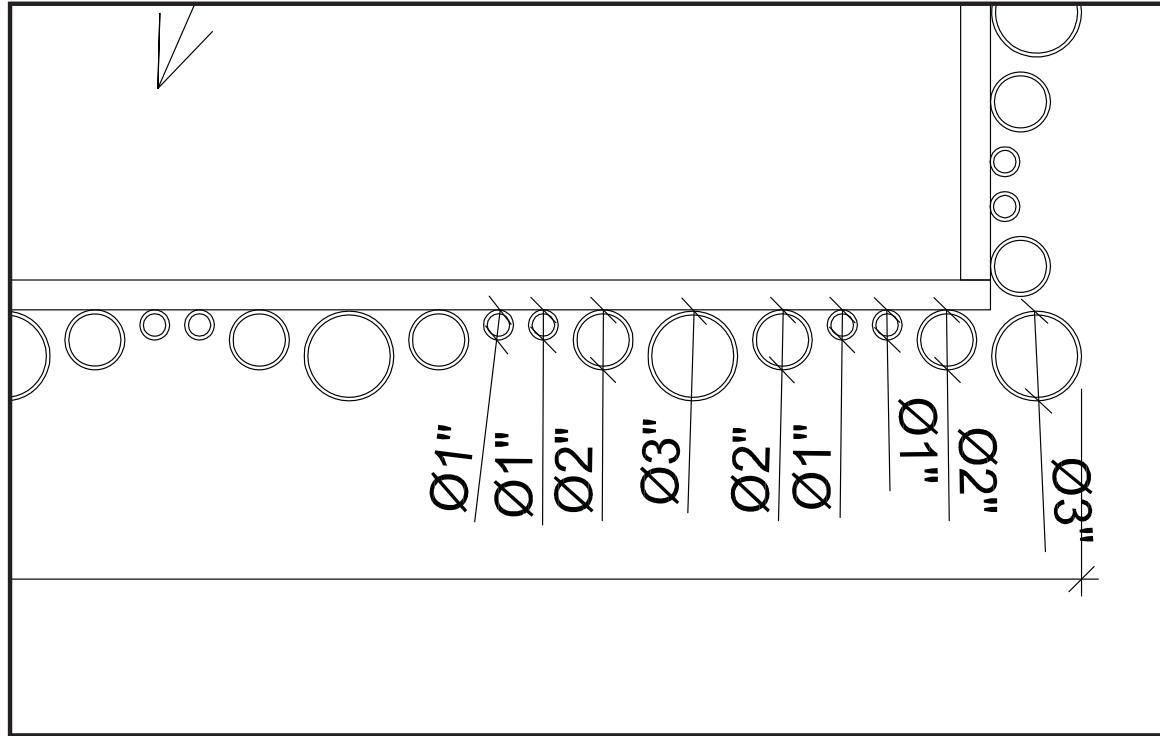
DETAIL A: TUBE SECTION DETAIL AT HEAD



DETAIL C: TUBE PLAN DETAIL



DETAIL B: TUBE SECTION DETAIL AT FOOT



DETAIL D: TUBE PLAN DETAIL

A-3.01A DRB PREVIOUSLY APPROVED WEST RENDERING



A-3.01B PROPOSED WEST RENDERING



A-3.02A DRB PREVIOUSLY APPROVED EAST RENDERING



A-3.02B PROPOSED EAST RENDERING



A-3.03 PROPOSED NORTH WEST RENDERING

