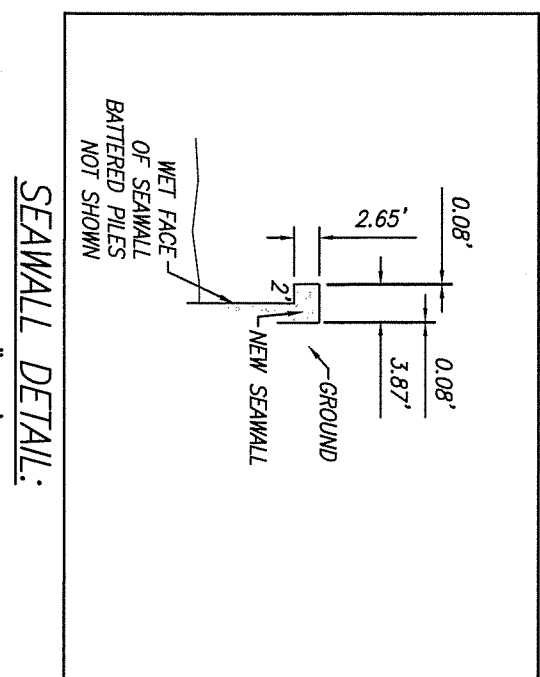


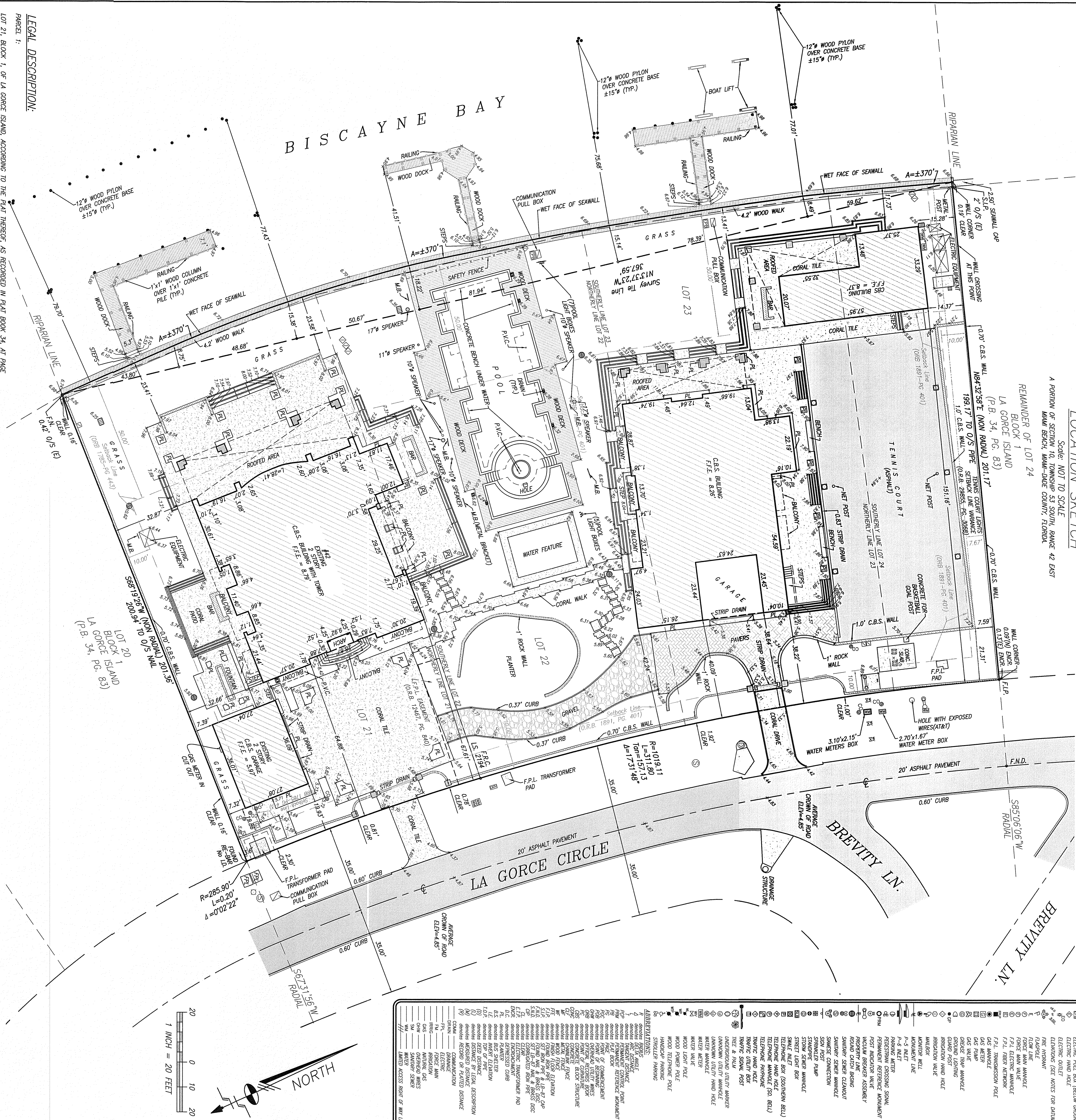
Scale: NOT TO SCALE
A PORTION OF SECTION 10, TOWNSHIP 53 SOUTH, RANGE 42 EAST
MIAMI BEACH, MIAMI-DADE COUNTY, FLORIDA



Scale: 1"=20'

GENERAL LEGEND:

ALUMINUM LIGHT POST (SINGLE)	ALUMINUM LIGHT POST (DOUBLE)	ALUMINUM LIGHT POST (TRIPLE)	ALUMINUM LIGHT POST (FOUR)	ALUMINUM LIGHT POST (FIVE)	ALUMINUM LIGHT POST (SIX)	ALUMINUM LIGHT POST (SEVEN)	ALUMINUM LIGHT POST (EIGHT)	ALUMINUM LIGHT POST (NINE)	ALUMINUM LIGHT POST (TEN)
ALUMINUM LIGHT POST (ELEVEN)	ALUMINUM LIGHT POST (TWELVE)	ALUMINUM LIGHT POST (THIRTEEN)	ALUMINUM LIGHT POST (FOURTEEN)	ALUMINUM LIGHT POST (FIFTEEN)	ALUMINUM LIGHT POST (SIXTEEN)	ALUMINUM LIGHT POST (SEVENTEEN)	ALUMINUM LIGHT POST (EIGHTEEN)	ALUMINUM LIGHT POST (NINETEEN)	ALUMINUM LIGHT POST (TWENTY)
ALUMINUM LIGHT POST (TWENTY-ONE)	ALUMINUM LIGHT POST (TWENTY-TWO)	ALUMINUM LIGHT POST (TWENTY-THREE)	ALUMINUM LIGHT POST (TWENTY-FOUR)	ALUMINUM LIGHT POST (TWENTY-FIVE)	ALUMINUM LIGHT POST (TWENTY-SIX)	ALUMINUM LIGHT POST (TWENTY-SEVEN)	ALUMINUM LIGHT POST (TWENTY-EIGHT)	ALUMINUM LIGHT POST (TWENTY-NINE)	ALUMINUM LIGHT POST (THIRTY)
ALUMINUM LIGHT POST (THIRTY-ONE)	ALUMINUM LIGHT POST (THIRTY-TWO)	ALUMINUM LIGHT POST (THIRTY-THREE)	ALUMINUM LIGHT POST (THIRTY-FOUR)	ALUMINUM LIGHT POST (THIRTY-FIVE)	ALUMINUM LIGHT POST (THIRTY-SIX)	ALUMINUM LIGHT POST (THIRTY-SEVEN)	ALUMINUM LIGHT POST (THIRTY-EIGHT)	ALUMINUM LIGHT POST (THIRTY-NINE)	ALUMINUM LIGHT POST (FORTY)
ALUMINUM LIGHT POST (FORTY-ONE)	ALUMINUM LIGHT POST (FORTY-TWO)	ALUMINUM LIGHT POST (FORTY-THREE)	ALUMINUM LIGHT POST (FORTY-FOUR)	ALUMINUM LIGHT POST (FORTY-FIVE)	ALUMINUM LIGHT POST (FORTY-SIX)	ALUMINUM LIGHT POST (FORTY-SEVEN)	ALUMINUM LIGHT POST (FORTY-EIGHT)	ALUMINUM LIGHT POST (FORTY-NINE)	ALUMINUM LIGHT POST (FIFTY)
ALUMINUM LIGHT POST (FIFTY-ONE)	ALUMINUM LIGHT POST (FIFTY-TWO)	ALUMINUM LIGHT POST (FIFTY-THREE)	ALUMINUM LIGHT POST (FIFTY-FOUR)	ALUMINUM LIGHT POST (FIFTY-FIVE)	ALUMINUM LIGHT POST (FIFTY-SIX)	ALUMINUM LIGHT POST (FIFTY-SEVEN)	ALUMINUM LIGHT POST (FIFTY-EIGHT)	ALUMINUM LIGHT POST (FIFTY-NINE)	ALUMINUM LIGHT POST (SIXTY)
ALUMINUM LIGHT POST (SIXTY-ONE)	ALUMINUM LIGHT POST (SIXTY-TWO)	ALUMINUM LIGHT POST (SIXTY-THREE)	ALUMINUM LIGHT POST (SIXTY-FOUR)	ALUMINUM LIGHT POST (SIXTY-FIVE)	ALUMINUM LIGHT POST (SIXTY-SIX)	ALUMINUM LIGHT POST (SIXTY-SEVEN)	ALUMINUM LIGHT POST (SIXTY-EIGHT)	ALUMINUM LIGHT POST (SIXTY-NINE)	ALUMINUM LIGHT POST (SEVENTY)
ALUMINUM LIGHT POST (SEVENTY-ONE)	ALUMINUM LIGHT POST (SEVENTY-TWO)	ALUMINUM LIGHT POST (SEVENTY-THREE)	ALUMINUM LIGHT POST (SEVENTY-FOUR)	ALUMINUM LIGHT POST (SEVENTY-FIVE)	ALUMINUM LIGHT POST (SEVENTY-SIX)	ALUMINUM LIGHT POST (SEVENTY-SEVEN)	ALUMINUM LIGHT POST (SEVENTY-EIGHT)	ALUMINUM LIGHT POST (SEVENTY-NINE)	ALUMINUM LIGHT POST (EIGHTY)
ALUMINUM LIGHT POST (EIGHTY-ONE)	ALUMINUM LIGHT POST (EIGHTY-TWO)	ALUMINUM LIGHT POST (EIGHTY-THREE)	ALUMINUM LIGHT POST (EIGHTY-FOUR)	ALUMINUM LIGHT POST (EIGHTY-FIVE)	ALUMINUM LIGHT POST (EIGHTY-SIX)	ALUMINUM LIGHT POST (EIGHTY-SEVEN)	ALUMINUM LIGHT POST (EIGHTY-EIGHT)	ALUMINUM LIGHT POST (EIGHTY-NINE)	ALUMINUM LIGHT POST (NINETY)
ALUMINUM LIGHT POST (NINETY-ONE)	ALUMINUM LIGHT POST (NINETY-TWO)	ALUMINUM LIGHT POST (NINETY-THREE)	ALUMINUM LIGHT POST (NINETY-FOUR)	ALUMINUM LIGHT POST (NINETY-FIVE)	ALUMINUM LIGHT POST (NINETY-SIX)	ALUMINUM LIGHT POST (NINETY-SEVEN)	ALUMINUM LIGHT POST (NINETY-EIGHT)	ALUMINUM LIGHT POST (NINETY-NINE)	ALUMINUM LIGHT POST (HUNDRED)



LEGAL DESCRIPTION:

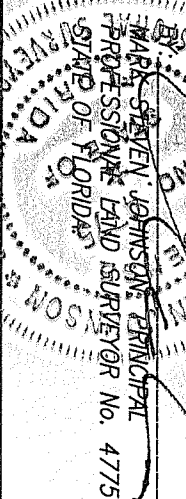
PANEL 1:
LOT 21, BLOCK 1, OF LA GORCE ISLAND, ACCORDING TO THE PLAT THEREOF, AS RECORDED IN PLAT BOOK 34, AT PAGE 83, OF THE PUBLIC RECORDS OF MIAMI-DADE COUNTY, FLORIDA.

LOT 22, 23 AND THE SOUTHWESTERN HALF OF LOT 24, BLOCK 1, OF LA GORCE ISLAND, ACCORDING TO THE PLAT THEREOF, AS RECORDED IN PLAT BOOK 34, AT PAGE 83, OF THE PUBLIC RECORDS OF MIAMI-DADE COUNTY, FLORIDA.

SURVEYOR'S CERTIFICATION:

THIS IS TO CERTIFY THAT THIS MAP AND THE SURVEY ON WHICH IT IS BASED...

Schwabke, Shilkin & Associates, Inc.



REVISIONS

Date	Drawn By	Revised By
06/11/17	2008 E	2008 E

ALTA/NSPS LAND TITLE SURVEY

ORDERED BY: MASH MIAMI INC, A FLORIDA CORPORATION

Section 10, Township 53 South, Range 42 East, Miami Beach, Miami-Dade County, Florida

TITLE INSURANCE POLICY EXCEPTIONS:

- RESTRICTIONS, RESERVATIONS, CONDITIONS, RESERVATIONS, EASEMENTS AND OTHER MATTERS SHOWN ON THE PLAT OF LA GORCE ISLAND, AS RECORDED IN PLAT BOOK 34, AT PAGE 83, SHOWN HEREON.
- EASEMENTS IN FAVOR OF UTILITIES AS CONTAINED IN INSTRUMENTS RECORDED IN DEED BOOK 1728, AT PAGE 445; DEED BOOK 1891, AT PAGE 401; AND DEED BOOK 2842, AT PAGE 228, SHOWN HEREON.
- EASEMENT GRANTED TO FLORIDA POWER AND LIGHT COMPANY, RECORDED APRIL 3, 1985, IN OFFICIAL RECORDS BOOK 12467, AT PAGE 840, SHOWN HEREON.
- AGREEMENT, RECORDED MARCH 2, 1995, IN OFFICIAL RECORDS BOOK 18699, AT PAGE 1294, AS MODIFIED BY AMENDMENT, RECORDED AUGUST 4, 1995, IN OFFICIAL RECORDS BOOK 18973, AT PAGE 1275, AFFECTS PROPERTY AS A WHOLE - NOT FLOTTABLE.
- UNIT OF TITLE, RECORDED OCTOBER 20, 1996, IN OFFICIAL RECORDS BOOK 13054, AT PAGE 3148, AFFECTS LOTS 21 AND PORTIONS OF LOTS 22 AND 23, WHOLLY SUBSUMED WITHIN THE SUBJECT PROPERTY - NOT FLOTTABLE.
- AGREEMENT IN REFERENCE TO WALL, RECORDED JULY 20, 1994, IN OFFICIAL RECORDS BOOK 14644, AT PAGE 5142, AFFECTS PROPERTY - NOT FLOTTABLE (REFERS TO WALL ALONG THE SOUTHERLY PROPERTY LINE).
- CITY OF MIAMI BEACH BOARD OF ADJUSTMENT ORDER (FILE NO. 2521), RECORDED NOVEMBER 6, 1996, IN OFFICIAL RECORDS BOOK 17417, AT PAGE 3865, AFFECTS PROPERTY - NOT FLOTTABLE (BUILDINGS REMOVED).
- TERMS AND CONDITIONS OF MEMBERSHIP AGREEMENT, RECORDED JULY 25, 2013, IN OFFICIAL RECORDS BOOK 28740, AT PAGE 1182, AFFECTS PROPERTY AS A WHOLE - NOT FLOTTABLE.
- DECLARATION OF RESTRICTIVE COVENANTS, RECORDED DECEMBER 1, 2015, IN OFFICIAL RECORDS BOOK 29409, AT PAGE 1798, AFFECTS PROPERTY AS A WHOLE - NOT FLOTTABLE.
- CITY OF MIAMI BEACH BOARD OF ADJUSTMENT ORDER (FILE NO. 3702), RECORDED NOVEMBER 16, 2015, IN OFFICIAL RECORDS BOOK 29853, AT PAGE 3068, SHOWN HEREON.

Schwabke, Shilkin & Associates, Inc.

Drawn By: L.L.C.	Surveyed By: L.L.C.	Checked By: M.S.L.	Date: 03-10-2017
Order No. 200447	F.B. No. 22008	Scale: AS SHOWN	Sheet 1 of 1