

July 13, 2017

RE: The Stobag Model Jumbo Retractable Awning

To whom it may concern:

The Jumbo has been installed in many residential and commercial projects, some examples would be Mangos on Ocean Drive, Sheraton Airport Hotel and IWC and Vacheron at the Miami Design District.

Please also note that the motor on this system will have a wind sensor and will automatically retract when winds are above 35mph.

The Jumbo model has Telescopic arms with integrated springs to provide the perfect stretch of the cloth and allow free and safe bolt head without additional supports. In order to guarantee in every position equally taut Substances can be used up to six telescopic arms. So it is guaranteed, even with a maximum width of 59 feet, the extremely high stability of the aluminum structure awnings . Rectilinear contour of the telescopic arms gives the Jumbo timeless elegant look.


Hood over Awning: A cover that protects the fabric and technical components from the build-up of dirt when the awning is closed and allows the awning to blend in with the facade.

Description: Please refer to attached drawings

Retraction and extension with tubular AC motor 120 V / 60 Hz friction brake and electronic end stop position. Thermal protection; Protection class IP54 (splash water), with 50 –150 cm 4-pole connection cable. Awning with square steel mounting bar, to hold the roller tube with self-aligning bearings for motor bearing and opposed bearing, roller tube support, clamp and brackets for wall or top fixing. Separate wall brackets with adjustable arm bracket for the telescope arms and the mounting bar. Roller tube made of galvanized steel with groove for the cover fixation. Self-aligning gearbox with roller tube supports made of aluminum casting, plastic rolls and continuous roller tube band on the mounting bar for parallel guidance of the roller tube. Telescope arms in 4 parts with interior gas-filled struts, telescope arm swivel mechanism made of aluminum casting, with integrated knock-up security and adjustment screws for precise fall adjustment. Front rail made of extruded multiple chamber aluminum profile in L-shape with half round formed mat geometry. Lateral end caps.

Feel free to contact us for any other information. Thank you.

Sincerely,



Jose A. Suarez
Mobile 786.291.4947



cc#06BS00613/CGC056904
PO Box 960639 Miami FL 33296-0639
TEL 305.269.0555
www.atlanticawnings.com

JUMBO



BALCONY & TERRACE

**SHADED AREAS COVER UP TO 90 SQUARE
METRES**



JUMBO S2160/2



Telescopic arm technology

- Shading of large areas up to 90 m²
- Projection up to max. 500 cm
- High rigidity and flexible bracket distribution thanks to 4-edge back bar
- Cover remains consistently taut and high thanks to telescopic arm technology
- Improved width / projection ratio
- Self-aligning bearings for the roller shaft guarantee optimum cover winding
- Awning incline adjustable from 5° to 22°
- Optional top board available
- Optional Valance provides additional shade and hides the awning arms from view



min. 395 cm
max. 1800 cm



min. 350 cm
max. 500 cm



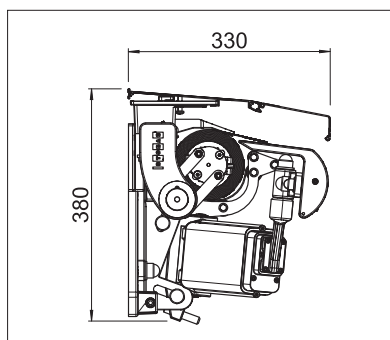
max. 50 km/h



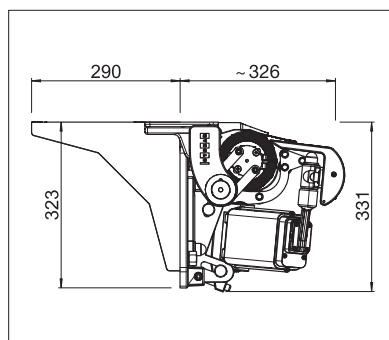
max. 39 km/h
For 450 cm and 500 cm projections



Technical dimensions in millimetres



Wall installation with top board



Ceiling mounting with ceiling bracket



EN 13561



REGISTRATION
REQUIRED



COLOURS

Discover the diverse options when selecting frame colours.



FABRICS

Choose from a comprehensive range of materials and colours.



ELECTRICS

More convenience thanks to the automated control and lighting systems.

More information at www.stobag.com

STOBAG

JUMBO S2160/2

Awning for large areas with telescopic arms and motor

S2160/2



	min. 395 cm max. 1800 cm		min. 350 cm max. 500 cm
--	-----------------------------	--	----------------------------

	5°–22°
--	--------

Minimal width for a given projection

projection	Minimal width 2 arms	4 arms
400 cm	400 cm	550 cm
500 cm	500 cm	625 cm

Description

Telescope arm awning for large areas with motor drive. Fabric cover. Retraction and extension with tubular AC motor 230 V/50 Hz friction brake and electronic end stop position. Thermal protection. Protection class IP54 (splash water), with 50–150 cm 4-pole connection cable. Awning with square steel mounting bar, to hold the roller tube with self aligning bearings for motor bearing and opposed bearing, roller tube support, clamp and brackets for wall or top fixing. Separate wall bracket with adjustable arm bracket for the telescope arms and the mounting bar. Roller tube made of galvanised steel with groove for the cover fixation. Self aligning gearbox with roller tube supports made of aluminium casting, plastic rolls and continuous roller tube band on the mounting bar for parallel guidance of the roller tube. Telescope arms in 4 parts with interior gas-filled struts, telescope arm swivel mechanism made of aluminium casting, with integrated knock-up security and adjustment screws for precise fall adjustment. Front rail made of extruded multiple chamber aluminium profile in L-shape with half round formed mat geometry. With grooves for the cover and the valance, with fixation groove for the telescope arms, nose for the smooth entry on the roller tube support. Lateral end caps.

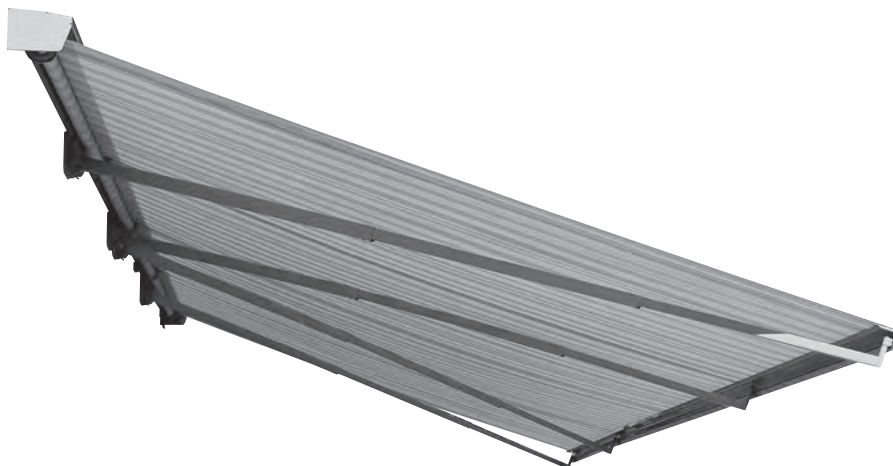
For wall fixing additional bracket S221/3 to be used.

For top fixing additional bracket S221/1 to be used.

Important: According to the disposition of the arm positions a base plate with intermediate bearing or one of the above mentioned additional brackets must be installed near the roller tube support. Arms above cover not possible. Base plates with integrated intermediate bearing are fixed to the wall or with a special fixation S346 under the ceiling. They hold the mounting bar, on which are fixed the roller tube, roller tube support and top board. This system avoids a separate fixation of the individual components directly on the wall. The roller tube is equipped with a self-aligning bearing system which ensures tightness of the cover over the complete width of the awning. This construction grants perfect function on retraction and extension of the awning for large areas.

METHOD OF DELIVERY

Awnings assembled as far as possible, arms and ground plate with integrated intermediate bearing separately. Cover on roller tube and front rail. Awnings of more than 900 cm width are prepared with link profiles.

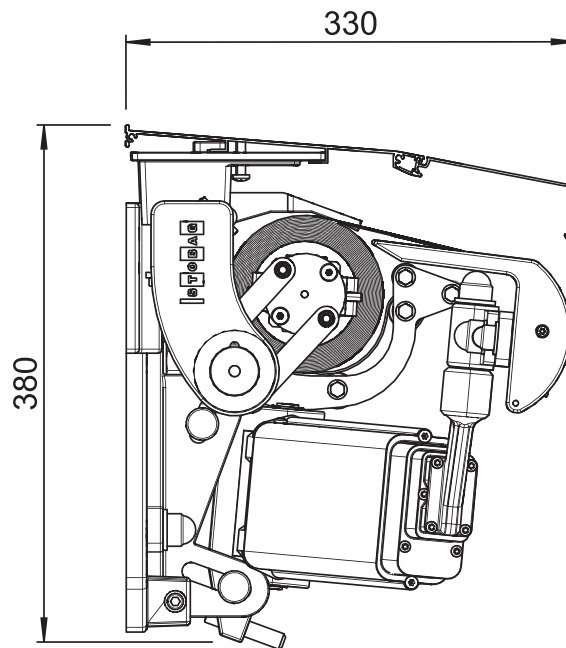


JUMBO S2160/2

Awning for large areas with telescopic arms and motor

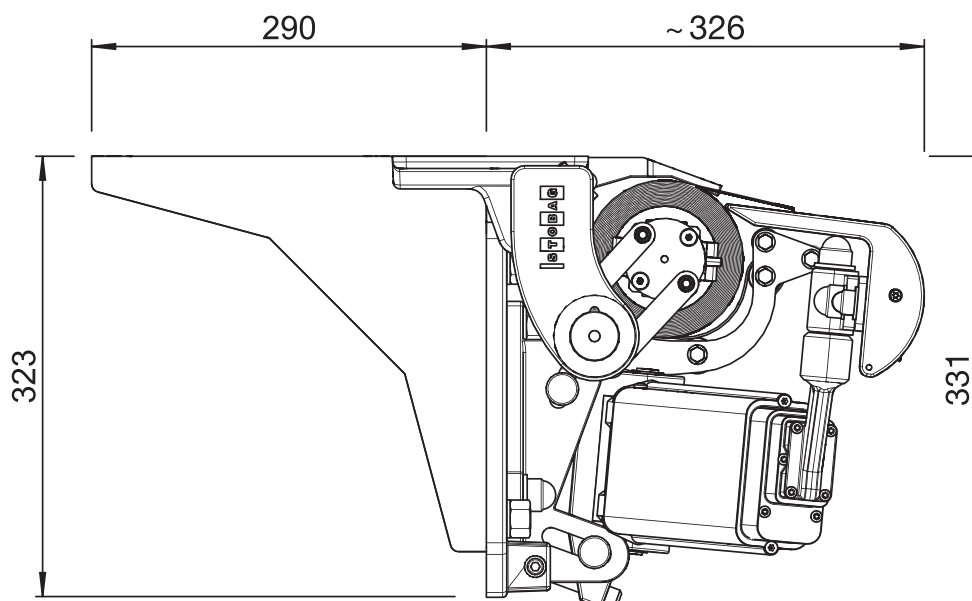
S2160/2

Wall fixing



S2160/2

Top fixing

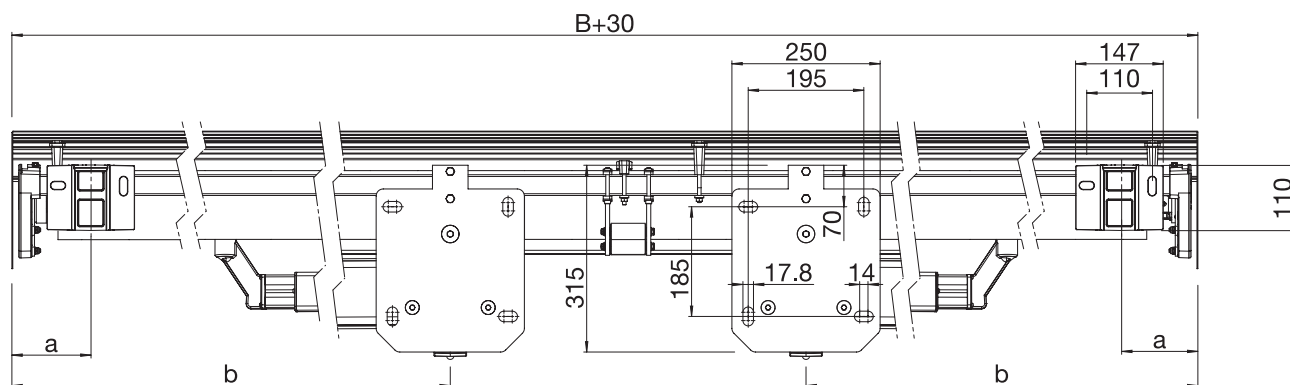


JUMBO S2160/2

Awning for large areas with telescopic arms and motor

S2160/2

Installation drawing wall fixing



S2160/2

Installation drawing top fixing

