

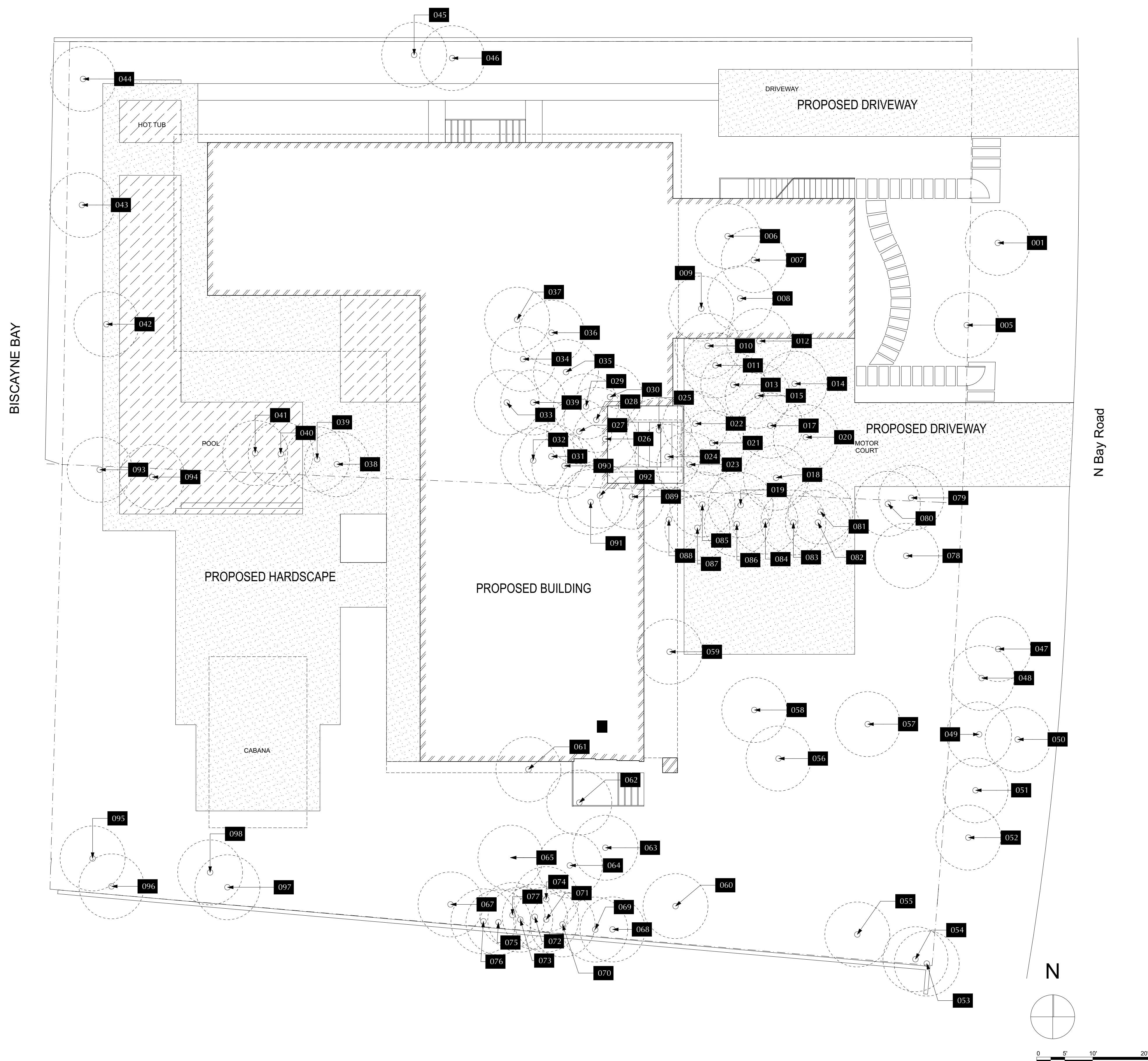
TREE NUM	COMMON NAME	BOTANICAL NAME	HEIGHT FEET	WIDTH FEET	CLEAR TRUNK FT	DBH INCHES	HEALTH CONDITION %	OBSERVATIONS
1	Pygmy Date Palm	<i>Phoenix roebelenii</i>	16	15	8	25	90	5 trunks
2	Same as 1							
3	Same as 1							
4	Same as 1							
5	Pygmy Date Palm	<i>Phoenix roebelenii</i>	14	15	8	12	90	Triple
6	Alexander Palm	<i>Ptychosperma elegans</i>	30	6	24	4	75	
7	Alexander Palm	<i>Ptychosperma elegans</i>	30	6	24	4	80	
8	Pygmy Date Palm	<i>Phoenix roebelenii</i>	16	10	10	8	85	Double
9	Mexican Cycad	<i>Dioidia edule</i>	10	10	3	12	85	
10	Pygmy Date Palm	<i>Phoenix roebelenii</i>	8	6	6	4	60	Declining
11	Royal Palm	<i>Roystonea elata</i>	45	15	32	16	70	Undersized fronds
12	Christmas Palm	<i>Adonia merrillii</i>	26	12	16	18	85	Triple
13	Christmas Palm	<i>Adonia merrillii</i>	26	12	16	18	85	Triple
14	Alexander Palm	<i>Ptychosperma elegans</i>	20	8	14	3	85	
15	Queen Palm	<i>Syagrus romanzoffiana</i>	30	12	20	10	80	
16	DEAD STUMP							
17	Chinese Fan Palm	<i>Livistona chinensis</i>	24	10	12	18	80	Triple
18	Queen Palm	<i>Syagrus romanzoffiana</i>	30	12	20	8	75	
19	Queen Palm	<i>Syagrus romanzoffiana</i>	30	8	20	6	65	
20	Chinese Fan Palm	<i>Livistona chinensis</i>	26	10	16	10	80	
21	Chinese Fan Palm	<i>Livistona chinensis</i>	26	10	12	8	80	
22	Christmas Palm	<i>Adonia merrillii</i>	24	10	14	14	80	Triple
23	Alexander Palm	<i>Ptychosperma elegans</i>	12	6	6	5	80	Double
24	Chinese Fan Palm	<i>Livistona chinensis</i>	30	15	22	20	90	Triple
25	Alexander Palm	<i>Ptychosperma elegans</i>	30	10	20	8	80	Triple
26	Christmas Palm	<i>Adonia merrillii</i>	24	6	18	6	80	Double
27	Alexander Palm	<i>Ptychosperma elegans</i>	24	10	12	8	80	Triple
28	Alexander Palm	<i>Ptychosperma elegans</i>	30	10	12	11	80	Triple
29	Chinese Fan Palm	<i>Livistona chinensis</i>	10	10	3	12	80	
30	Alexander Palm	<i>Ptychosperma elegans</i>	30	10	22	10	80	Triple
31	Alexander Palm	<i>Ptychosperma elegans</i>	35	10	26	8	80	Double
32	Chinese Fan Palm	<i>Livistona chinensis</i>	30	15	14	24	90	Triple
33	Christmas Palm	<i>Adonia merrillii</i>	28	15	16	15	85	Triple
34	Christmas Palm	<i>Adonia merrillii</i>	22	6	14	7	75	
35	Queen Palm	<i>Syagrus romanzoffiana</i>	35	15	20	11	80	
36	Christmas Palm	<i>Adonia merrillii</i>	24	12	16	12	85	Double
37	Christmas Palm	<i>Adonia merrillii</i>	30	12	20	12	85	Double
38	Queen Palm	<i>Syagrus romanzoffiana</i>	40	15	30	10	70	Low nutrition
39	Queen Palm	<i>Syagrus romanzoffiana</i>	30	12	18	8	70	Low nutrition
40	Queen Palm	<i>Syagrus romanzoffiana</i>	20	10	8	8	80	
41	Queen Palm	<i>Syagrus romanzoffiana</i>	20	10	8	7	75	
42	Alexander Palm	<i>Ptychosperma elegans</i>	16	8	10	9	75	Double
43	Alexander Palm	<i>Ptychosperma elegans</i>	18	6	12	6	65	One trunk declining
44	Alexander Palm	<i>Ptychosperma elegans</i>	20	8	12	6	75	Double
45	Alexander Palm	<i>Ptychosperma elegans</i>	30	10	22	8	80	Double
46	Areca Palm	<i>Dyopsis lutescens</i>	14	10	8	15	75	Cluster
47	Bottlebrush	<i>Callistemon viminalis</i>	15	18	14	50		See Arborist Report
48	Black Olive	<i>Bucida buceras</i>	30	25	27	50		See Arborist Report
49	Bottlebrush	<i>Callistemon viminalis</i>	30	20	18	30		See Arborist Report
50	Papaya	<i>Carica papaya</i>	10	3	3	60		
51	Black Olive	<i>Bucida buceras</i>	25	15	12	35		See Arborist Report
52	Bottlebrush	<i>Callistemon viminalis</i>	30	25	34	45		See Arborist Report
53	Alexander Palm	<i>Ptychosperma elegans</i>	26	8	15	4	80	
54	Bougainvillea	<i>Bougainvillea spp</i>	16	10	5	70		
55	Pygmy Date Palm	<i>Phoenix roebelenii</i>	12	8	8	4	80	
56	Alexander Palm	<i>Ptychosperma elegans</i>	22	8	14	4	85	
57	Mango	<i>Mangifera indica</i>	45	30	28	55		See Arborist Report
58	Avocado	<i>Persea americana</i>	12	12	4	20		See Arborist Report
59	Pygmy Date Palm	<i>Phoenix roebelenii</i>	8	10	5	12	75	
60	Alexander Palm	<i>Ptychosperma elegans</i>	26	6	20	3	75	
61	Tree Ligustrum	<i>Ligustrum japonicum</i>	10	10	12	60		See Arborist Report
62	Weeping Fig	<i>Ficus microcarpa</i>	30	25	13	60		See Arborist Report
63	White Bird of Paradise	<i>Strelitzia reginae</i>	28	15	12	75		11 trunks at 4 inches each
64	Alexander Palm	<i>Ptychosperma elegans</i>	32	8	22	4	80	
65	Live Oak	<i>Quercus virginiana</i>	40	30	22	70		See Arborist Report
66	Pleomele	<i>Dracaena reflexa</i>	22	15	24	50		Four trunks
67	Same as 66							
68	Alexander Palm	<i>Ptychosperma elegans</i>	26	8	20	4	80	
69	Alexander Palm	<i>Ptychosperma elegans</i>	32	10	24	7	80	Double
70	Alexander Palm	<i>Ptychosperma elegans</i>	30	8	20	4	85	
71	Alexander Palm	<i>Ptychosperma elegans</i>	28	10	20	7	80	Double
72	Pleomele	<i>Dracaena reflexa</i>	14	4	9	30	Declining	
73	Alexander Palm	<i>Ptychosperma elegans</i>	30	6	21	3	70	
74	Alexander Palm	<i>Ptychosperma elegans</i>	28	8	18	4	80	
75	Pleomele	<i>Dracaena reflexa</i>	14	6	6	60		
76	Alexander Palm	<i>Ptychosperma elegans</i>	30	8	24	4	80	
77	Alexander Palm	<i>Ptychosperma elegans</i>	26	8	18	3	75	
78	Pygmy Date Palm	<i>Phoenix roebelenii</i>	9	6	6	4	85	
79	Peregrina	<i>Jatropha integerrima</i>	10	10	8	65	Multiple trunks	
80	Alexander Palm	<i>Ptychosperma elegans</i>	30	8	24	4	85	
81	Alexander Palm	<i>Ptychosperma elegans</i>	28	8	20	4	80	
82	Alexander Palm	<i>Ptychosperma elegans</i>	30	8	20	4	80	
83	Alexander Palm	<i>Ptychosperma elegans</i>	32	6	21	4	80	
84	Alexander Palm	<i>Ptychosperma elegans</i>	32	10	21	7	80	Double
85	Alexander Palm	<i>Ptychosperma elegans</i>	30	6	20	4	75	
86	Papaya	<i>Carica papaya</i>	14	3	4	60		
87	Alexander Palm	<i>Ptychosperma elegans</i>	30	10	21	7	80	Double
88	Alexander Palm	<i>Ptychosperma elegans</i>	30	8	20	4	80	
89	Alexander Palm	<i>Ptychosperma elegans</i>	30	6	22	4	80	
90	Alexander Palm	<i>Ptychosperma elegans</i>	28	10	16	7	80	Double
91	Alexander Palm	<i>Ptychosperma elegans</i>	30	6	20	4	75	
92	Alexander Palm	<i>Ptychosperma elegans</i>	30	10	20	9	80	Triple
93	Umbrella Tree	<i>Schefflera actinophylla</i>	STUMP					Prohibited Species
94	Umbrella Tree	<i>Schefflera actinophylla</i>	STUMP					Prohibited Species
95	Date Palm	<i>Phoenix spp</i>	12	12	4	14	80	
96	Alexander Palm	<i>Ptychosperma elegans</i>	12	5	8	4	75	
97	Alexander Palm	<i>Ptychosperma elegans</i>	30	10	20	7	70	Double
98	Pitch Apple	<i>Clusia rosea</i>	15	15	7	30		See Arborist Report

I certify that all the statements of fact in this evaluation are true, complete, and correct to the best of my knowledge and belief and that they are made in good faith.

Jeremy T. Chancey, FL-0762A, ISA Certified Arborist

KEY LEGEND

- 000 EXISTING TREE TO REMAIN
- 000 EXISTING TREE TO RELOCATE
- 000 EXISTING TREE TO REMOVE



Tree Disposition Plan

SCALE: 1" = 10'

RUNZHEIMER RESIDENCE
 5350 N. Bay Rd.
 Miami Beach, FL

SEAL

URBAN ROBOT LLC
 A&P202759 US6001534 LC2600510

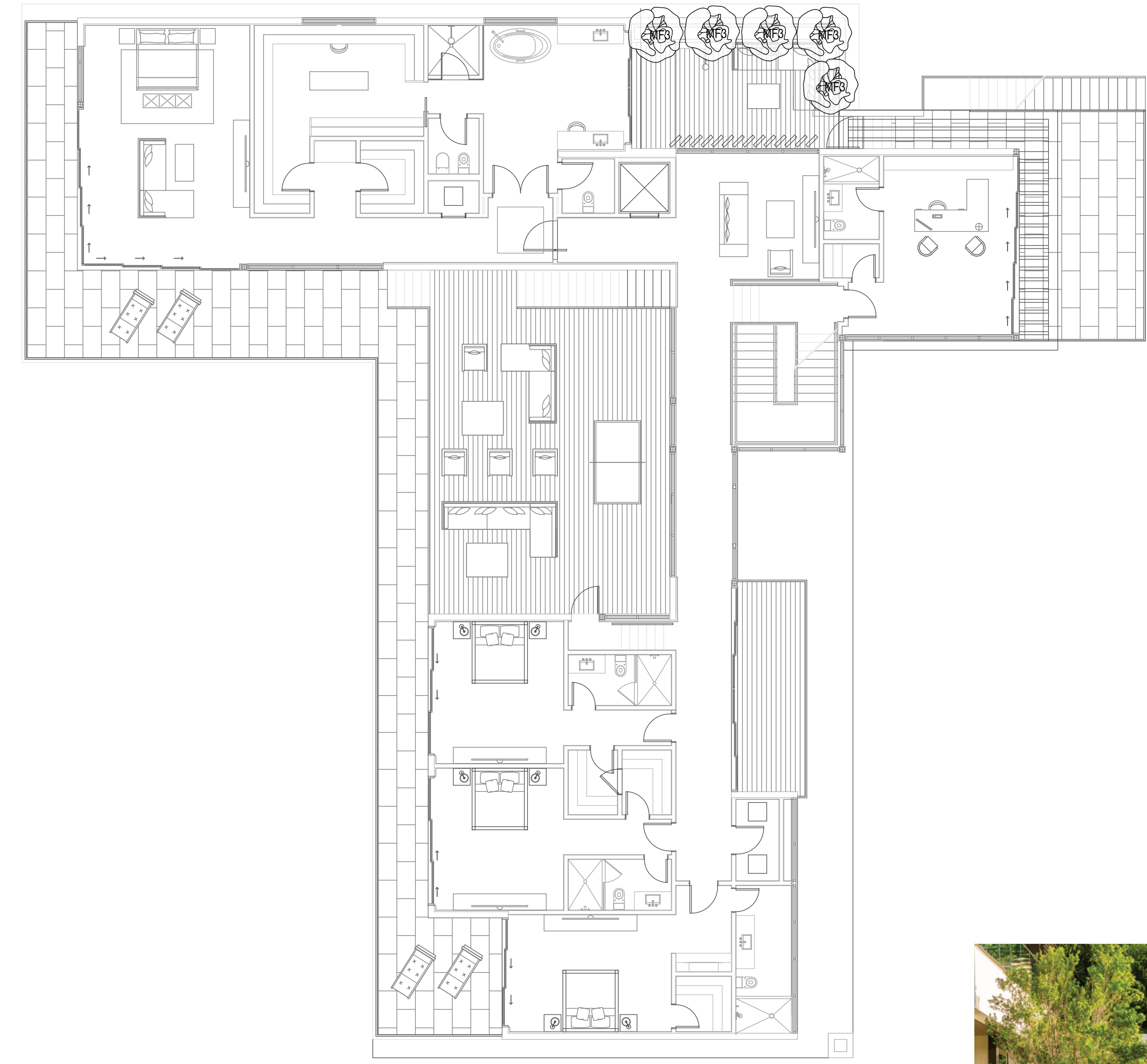
REVISIONS

1602 PROJECT NO.
 04/15/2016 DATE
 ML / RU / JV DRAWN / CHECKED
 Tree Disposition Plan

L100

1 2 3 4 5 6 7 8 9 10 11 12 13 14 15 16 17

M
L
K
J
I
H
G
F
E
D
C
B
A



Plant Schedule							
Code	Botanical Name	Common Name	Q	DBH	Height	Spread	Remarks
MF3	Myrcianthes fragrans	Simpson's Stopper	5	2" min	12'	6'	multitrunk; specim

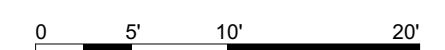
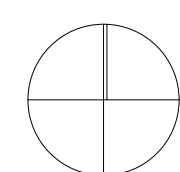
Myrcianthes fragrans

①

Second Floor Planting Plan

SCALE: 1" = 10'

N



1 2 3 4 5 6 7 8 9 10 11 12 13 14 15 16 17

4251 COUNTRYSIDE STE. 800 TAMPA FL 33619
 813.288.8888
 WWW.URBANROBOT.COM
 URBAN ROBOT LLC



RUNZHEIMER RESIDENCE
 5350 N. Bay Rd.
 Miami Beach, FL

SEAL

URBAN ROBOT LLC
 AA20027610 US6001534 LC26000510

REVISIONS

1602
 PROJECT NO.
 04/15/2016
 DATE
 ML / RU / JV
 DRAWN / CHECKED

2nd Floor Planting Plan

L201

LANDSCAPE LIGHTING SPECIFICATIONS

1. All work shall comply with these drawings, the latest version of the Florida Building Code, and all Applicable Codes and Regulations. Code Compliance is the complete responsibility of the Contractor and any modifications required shall be performed at no additional charge.
2. The Contractor is to familiarize himself with and confirm all Drawings, Specifications, and existing materials and conditions prior to Bid and commencing the work. Notify the Landscape Architect immediately of any discrepancies. The contractor shall include in his Bid all costs necessary for a complete and operational installation and shall visit the job site prior to bid date.
3. All materials furnished on the job site shall be new and stored in such a manner as to protect them from the elements.
4. Lighting plans are schematic in nature. Fixture symbols are not to scale. Verify exact location and orientation of each fixture in the field with Landscape Architect (L.A.). Verify all quantities, dimensions, and conditions in the field. Confirm fixture finishes & specs with Landscape Architect before purchase.
5. All Contractors are to keep the job site clean and free of debris at all times.
6. Do not scale drawings. Dimensions and/or existing conditions govern. Notify the Landscape Architect immediately of any discrepancies. Stop work in areas of discrepancy until all issues are resolved.
7. All work shall be in strict accordance with the best practices of the construction trade.
8. Contractor to coordinate programming, controls, and electrical with MEP & L.A.
9. All details, sections, diagrams, etc., are intended to be typical and shall be construed to apply to any similar situation elsewhere in the project.
10. The Contractor shall verify all utilities and placement locations of pipe, conduit, equipment, ductwork, etc., prior to submitting Bid to the Owner.
11. Where conflicts and/or variances exist in the Drawings or Specifications, the arrangement of better quality, greater quantity, and higher cost shall be included in the Bid price. The Landscape Architect will have the final decision regarding item and manner in which work shall be installed.
12. All fixtures to be UL-listed and wet-rated.
13. Owner cannot guarantee that internal changes have not occurred since these Drawings have been prepared. It is the responsibility of the Contractor to field check all dimensions and conditions.
14. Any penetrations or modifications to structural steel or concrete must be coordinated with the project's Structural Engineer. All lumber in contact with concrete or masonry shall be pressure treated.
15. The Contractor shall check in with the on-site Construction Manager prior to start of work. During construction, the Contractor shall coordinate all work with the Owner and the on-site Construction Manager.
16. The Contractor shall verify the locations of site utilities prior to the commencement of work. Existing utilities shall be protected or rerouted as required to accommodate the new work.
17. The Contractor shall inspect the surfaces and substrate conditions on/in which the work shall be performed. Beginning of work means acceptance of existing surfaces, substrates and conditions.
18. Prior to final acceptance, Contractor shall adjust all lighting to Owner's satisfaction.
19. The Landscape Architect shall have final decision as to whether work of poor quality and/or substandard workmanship shall be repaired or replaced.
20. The Contractor shall arrange for all building permits and inspections by the building authorities. Cost of all permits, fees, and special inspections shall be in the Bid wherever necessary.
21. The Contractor shall provide proof of insurance and shall not send or employ for this project any laborers or subcontractors. Insurance shall provide protection against public liability and property damage for duration of work.
22. The Contractor shall provide a minimum of one full year warranty for any and all labor and materials they provide, install, or apply.
23. The Contractor shall verify the condition of all existing materials, system, or devices prior to reuse or connection to such materials, systems or devices. Contractor shall bear the full responsibility for reuse of such items and shall provide a minimum 1 year guarantee for all work, materials, and system.
24. These drawings and documents, as instruments of service, are the property of the Landscape Architect and may not be used or reproduced in any manner without his/her express consent.
25. It shall not be the intent of these plans and/or specifications to show every minor detail of construction. The Contractor shall be expected to furnish and install all items for a complete system and provide all requirements necessary for equipment to be placed in proper working order.
26. All conduit runs are shown diagrammatically. Exact routing shall be determined in the field, unless otherwise noted.
27. As-Built drawings shall be furnished to the Owner upon completion of work.

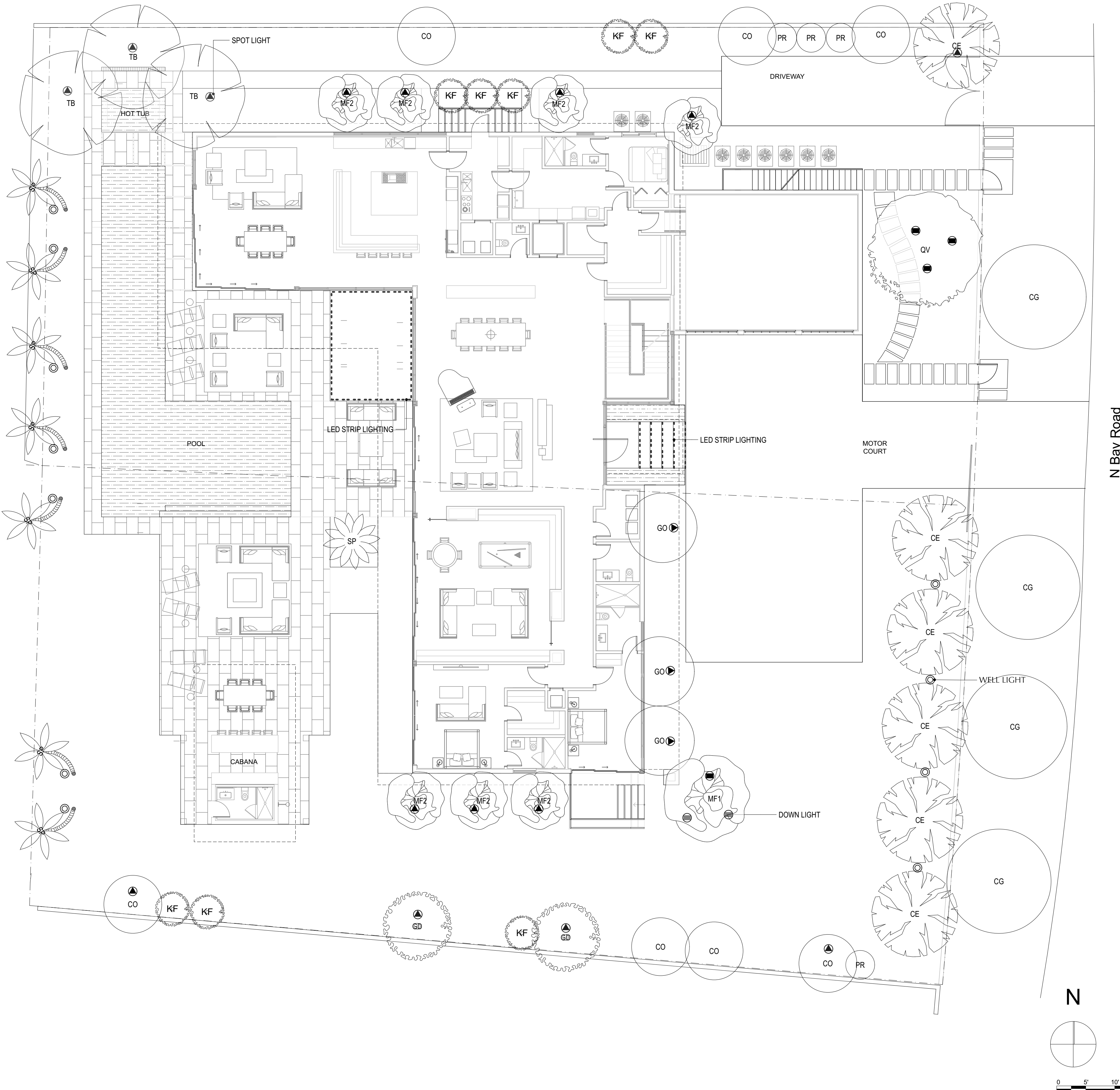
LIGHT FIXTURE SCHEDULE

Fixture Type	Quantity	Brand	Name / Model No.	Wattage	Lamp	Color	Optics	Voltage	Finish	Other	Remarks
SPOT LIGHT	09	B-K Lighting	Delta Star	8 watt	LED/2.7K (e36)	White	Spot (SP)	12VAC	Machined Stainless Steel (MAC)	90° Cap (B)	
WELL LIGHT	10	B-K Lighting	Well Star	8 watt	LED/2.7K (e36)	White	Medium Flood (MFL)	12VAC	Machined Stainless Steel (MAC)		
DOWN LIGHT	12	B-K Lighting	El Capitan	8 watt	LED/2.7K (e36)	White	LED/2700K	12VAC	Medium [MFL]		
LED STRIP LIGHT	75 linear ft.										LED STRIP LIGHT

Locations shown are approximate; verify exact fixture placement and orientation in the field with Landscape Architect
Verify zoning & controls with Landscape Architect
Verify fixtures and finishes with Landscape Architect before purchase
All fixtures to be UL rated

FIXTURE LEGEND

- SPOT LIGHT
- WELL LIGHT
- DOWN LIGHT
- - -



Ground Floor Lighting Plan

SCALE: 1" = 10'