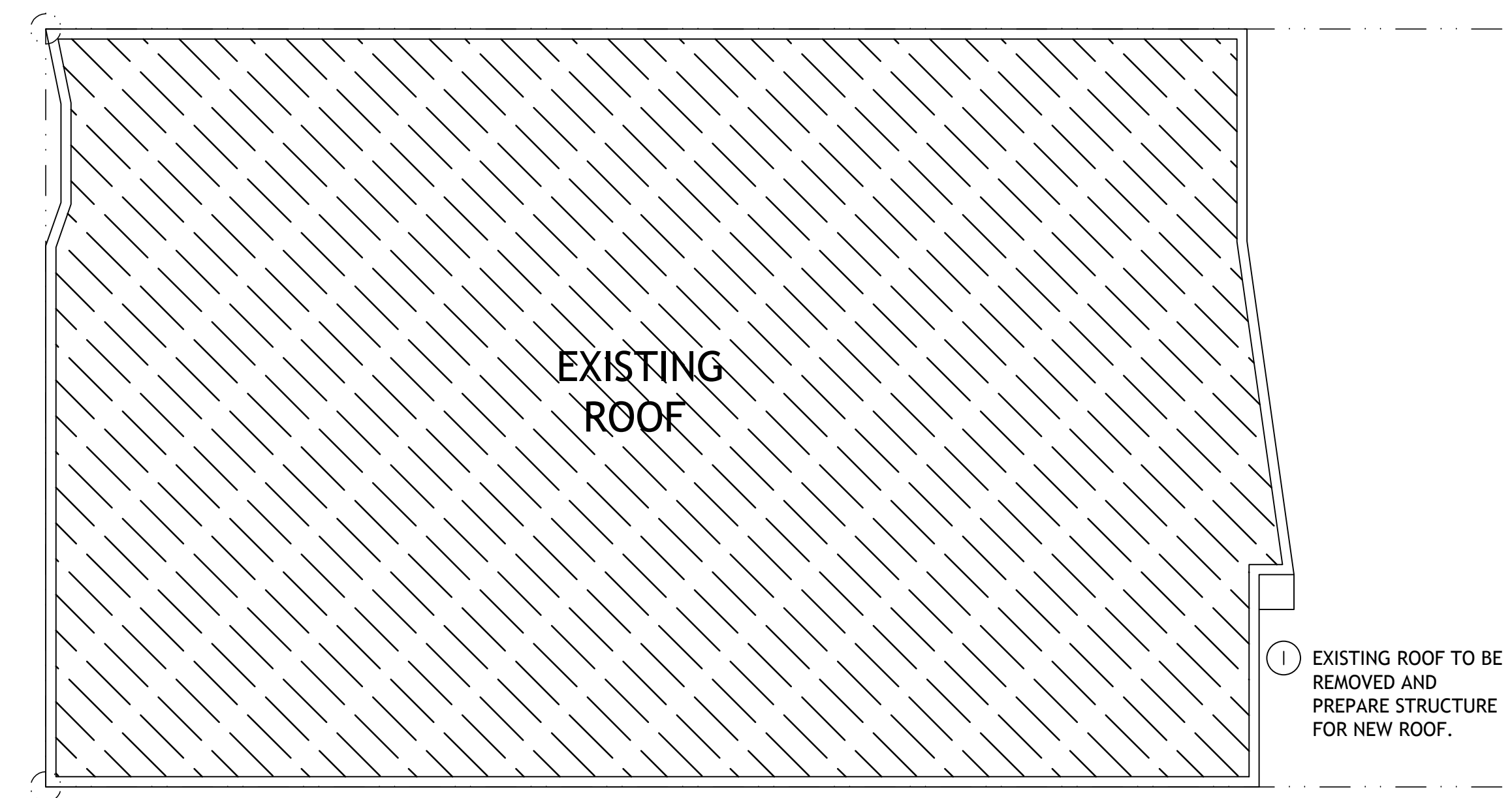
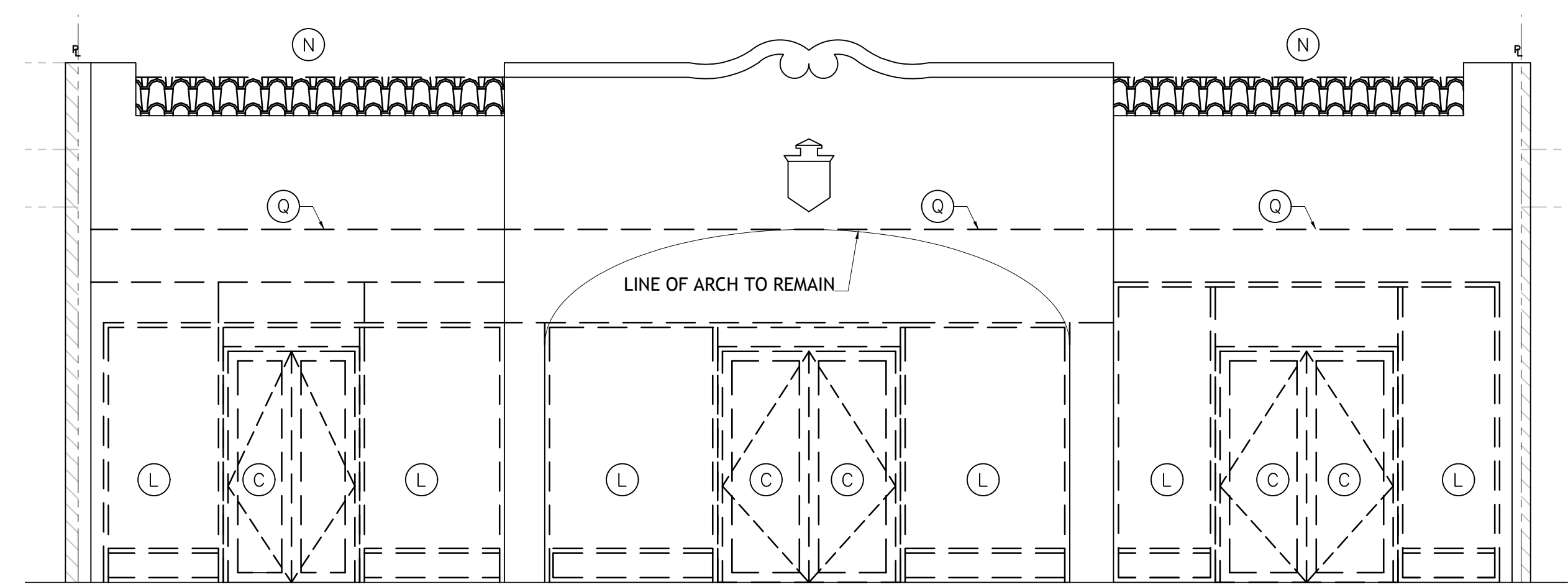


1427
WASHINGTON
3,900 SQ. FT.

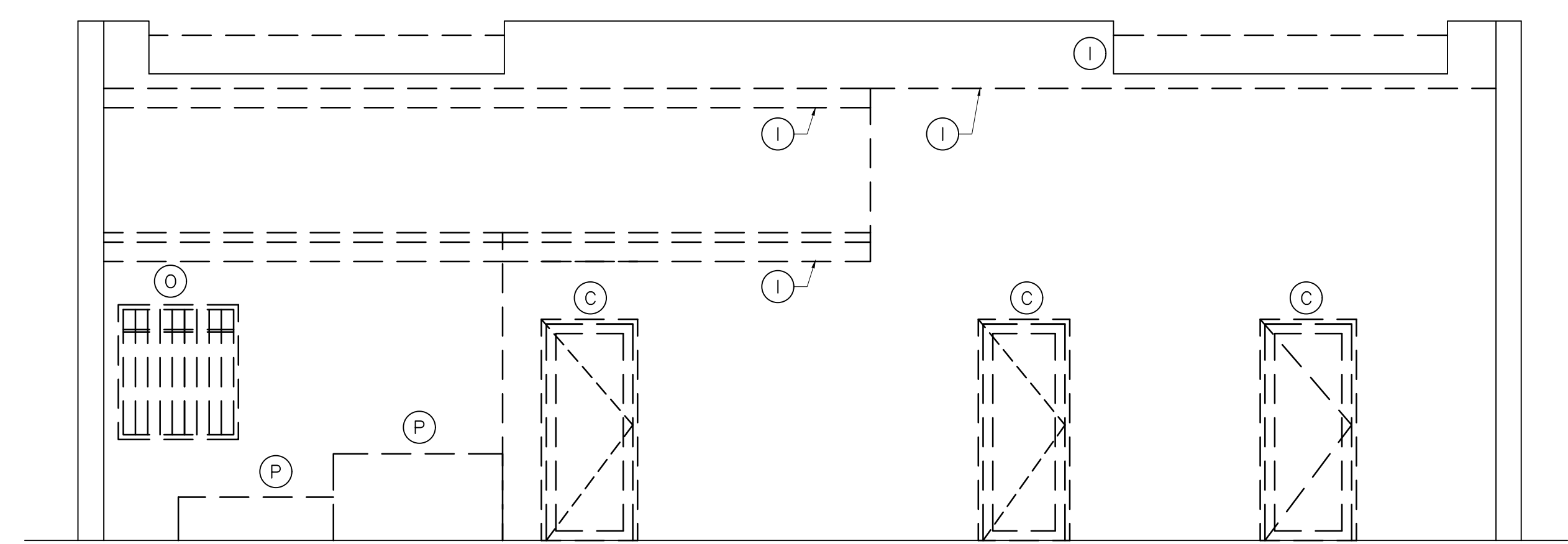
EXISTING/DEMOLITION PLAN
SCALE 1/4" = 1'-0"



EXISTING/DEMOLITION ROOF PLAN
SCALE 1/8" = 1'-0"



EXISTING/DEMOLITION ELEVATIONS
SCALE 1/4" = 1'-0"



EXISTING/DEMOLITION ELEVATIONS
SCALE 1/4" = 1'-0"

DEMOLITION: SCOPE OF WORK KEY		
(A) REMOVE SINK & VANITY (CAP PLUMBING LINES)	(G) REMOVE CLOSET AND MILLWORK	(N) REMOVE ROOF TILE
(B) REMOVE TOILET (CAP PLUMBING LINES)	(H) REMOVE CONCRETE COLUMNS	(O) REMOVE WINDOW AND FRAME
(C) REMOVE DOOR, FRAME, & CASINGS	(I) REMOVE ROOF	(P) REMOVE PLANTER
(D) REMOVE WALL PARTITION AND DRYWALL (CAP ALL ELECTRICAL LINES)	(J) REMOVE PORTION OF CMU WALL	(Q) REMOVE EXISTING WALL TO PREPARE FOR NEW ARCH
(E) REMOVE FINISH FLOORING	(K) REMOVE INFILL WALL	
(F) REMOVE SOFFITS, A/C REGISTERS. REMOVE ALL LIGHTS, SWITCHES, AND RECEPTACLES. CAP ELECTRICAL LINES @ SOURCE.	(L) REMOVE STOREFRONT	

CLASSIFICATION OF WORK:
DEMOLITION
LIFE SAFETY NOTES (AS PER NFPA 1, 16.4):
1-THIS UNIT IS NOT/WILL NOT BE OCCUPIED DURING DEMOLITION PROCESS
2-LIFE SAFETY SYSTEMS SHALL BE MAINTAINED OPERATIONAL AT ALL TIMES DURING DEMOLITION PROCESS
DEMOLITION LEGEND:
DEMOLITION
WALL TO REMAIN

DRAWN BY:
REVISIONS:

AADDRESS
ANTHONY LEON
0016732

3 DESIGN
ARCHITECTURE
3260 NW 7TH ST. MIAMI, FL 33125
P: 305-438-8377 | F: 305-438-8379

SEAL

HISTORIC PRESERVATION BOARD FOR 1427 WASHINGTON AVE MIAMI BEACH, FL 33141

THESE PLANS ARE FOR BUILDING DEPARTMENT REVIEW ONLY. THEY ARE NOT TO BE CONSIDERED AS CONSTRUCTION DOCUMENTS UNTIL ALL BUILDING DEPARTMENT APPROVALS ARE OBTAINED.

HPB-1.2
DEMOLITION FLOOR PLANS & NOTES