

Mrs. Owner **Caroline Ansbacker** Mailing Address Permit No. **6572**  
 Lot 10 Block 14 Subdivision **LaGorce** No. 5350 Street Bay Road Date Dec 5-1934  
 General Contractor **R. W. Edholm, Inc.** **102.92** Address  
 Architect **Carlos B. Schoeppl** **2C-7** Address **3215-03-1850**  
 Front 58 · Depth 80 Height 24 Stories Use Residence & Garage  
 Type of construction **Brick** Cost \$20,000.00 Foundation **conc. pile** Roof **Tile**

Plumbing Contractor **Markowitz** permit # **7774** Address Date **12-12-34**  
 No. fixtures **19** Rough approved by Date  
 Plumbing Contractor Address Date  
 No. fixtures set Final approved by Date  
 Sewer connection **1** Septic tank Make Date

Electrical Contractor **Hardy Electric Co.** permit **4838** Address Date **Jan. 2-1935**  
 No. outlets **54** Heaters **1** Stoves **1** Motors **1** Fans Temporary service  
 Receptacles **30** Rough approved by Date  
 Electrical Contractor Address Date  
 No. fixtures set Final approved by Date  
 Date of service

Alterations or repairs # **18453** - Painting - waterproofing - day labor - \$ 250... Date **June 5, 1944**

ELECTRICAL PERMIT # **30628** Gulf Electric: 2 Switch outlets, 1 Receptacle, 2 Light outlets,  
 2 Fixtures, Jan. 17, 1950 - Woodmansee 1-18-1950  
 BUILDING PERMIT # **32931** Replacing eleven 2 x 8 floor joist and new floor 2 x 10 - No other work-  
 all eaten out by termites - Owner \$ 500.... June 27, 1950  
 ELECTRICAL PERMIT # **38318** Astor Electrical Service: 2 Receptacles, 1 Light outlets, 1 Fixture:  
 OK 2/27th Meginniss 12/15/52  
 ELECTRICAL PERMIT # **49094** Astor Electric Service, Inc.: 2 Centers of Distribution, 1 Meter Change,  
 4 Motors, 0-1 H.P. OK 1/31/57 Meginniss December 12, 1956  
 OK 2/18/57 Plaag

OK Plaag 1/24/57

BUILDING PERMITS: #52537, AIR CONDITIONING: 4 3/4 ton window units, C.E. Morgan, \$800.00, 1/25/57

#56004 M. D. Futch: For Sale Sign - \$5.00 - April 30, 1958

#60412 C. W. James Construction: 10'x42' Florida Room addition, 30'x40' Flagstone Patio - \$4000 - 10/27/59 OK COX 2/3/60

#60552 Ideal Roofing & Sheet Metal: New gravel roof on wood deck - \$320 - Nov. 10, 1959

#63174 Jack Justice, Realtor: For Sale Sign - \$5.00 - Oct. 10, 1960

#64883 Remington Construction Co., Inc.: Construct 13'x20'x11' at east end of bldg. to create a bedroom and bath on spread footing roof same as main house. 17'x20' patio concrete with cuban tile; no roof over. - \$7,000. - Mar.17,1961  
Compl. Saperstein 5/1/62

#76774 Owner, L. B. Block: Paint interior and exterior - \$1000 - 8/4/66

#77148 Owner, M. D. Futch: For sale sign - \$5.00 - 10/11/66

#77182 Air Specialists, Inc.: Install 1 - 2 1/2 ton and 1 - 3 ton a.c. units - \$1600 - 10/14/66

#79827 M. D. Futch - Real Estate: For sale sign - \$5.00 - 2/27/68

#114 Sears & Roebuck 1 3-Ton Air Conditioning (Replacement) \$6.00 7/8/68 *add 1/31/65*

#82649 Andrews Roofing & Improvement \$240.00 7/11/69

#85780 - McGrath Pools - 25,000 gal pool 20 X 40 residence \$10,000.00 12/9/70

#1905 - Sherba Bros. - 1-3 ton air cond wind 1/20/72

#08675-Dock and Marine Constr.-Replacement construct conv. dock and install davits-replace 40 rip rap bags-\$5500-2-26-76

#11740-Southern Bilt Kitchens-Remodel bathroom, minor repairs-\$2000-7-18-77

#14409-C.E. Sheppard Roofing-Re-roof 35 sqs-\$5300-12-21-78

#14539-Biscayne Roofing-Re-roof 28 sqs-\$5650-1-24-79

PLUMBING PERMITS : #42906 A. D. Patterson: 1 water closet, 1 lavatory, 1 bath tub, 5/26/61

#48205 - Sunshine Pools - pool piping 1/13/71

#48563 - People's Gas Systems - 1 Grill, 1 Space Heater - 7-29-71

#55073-Alco Plumbing- 1 bath tub, 1 bidet, 2 lavatory, 1 water closet-7-28-77

ELECTRIC PERMITS

#54450 Tri-City Elec: 2 switch outlets, 8 receptacles, 9 light outlets, 9 fixtures - 11/12/59 OK 12/18/59 Meginniss

#56975 Tri City Elec: 7 switch outlets; 9 receptacles; 2 light outlets; 2 fixtures; 1 space heater-bath; 2 fan outlets; 1 motor, 0-1 hp - 7/6/61 OK Fidler 9/7/61

#63791 Griffin Electrical Contractors: 2 switch outlets; 6 light outlets; 2 receptacles; 6 fixtures; 1 refrig. outlet; 1 motor, 0-1 hp; 1 appliance outlet - 8/9/66

#65040 Griffin Elec. Contr.: replaced panel - Fire. 9/11/67

#68573 - Widawski Elect. - 1 switch outlets - 2 light outlets - 6 receptacles - 2 motors 2-5 HP 2/8/71

#74229-Rapelco Electric- 1 switch outlet, 3 light outlet, 1 receptacle, 1 exhaust fan bath-7-27-77

5401 N Bay -

COASTAL CONTROL ZONE

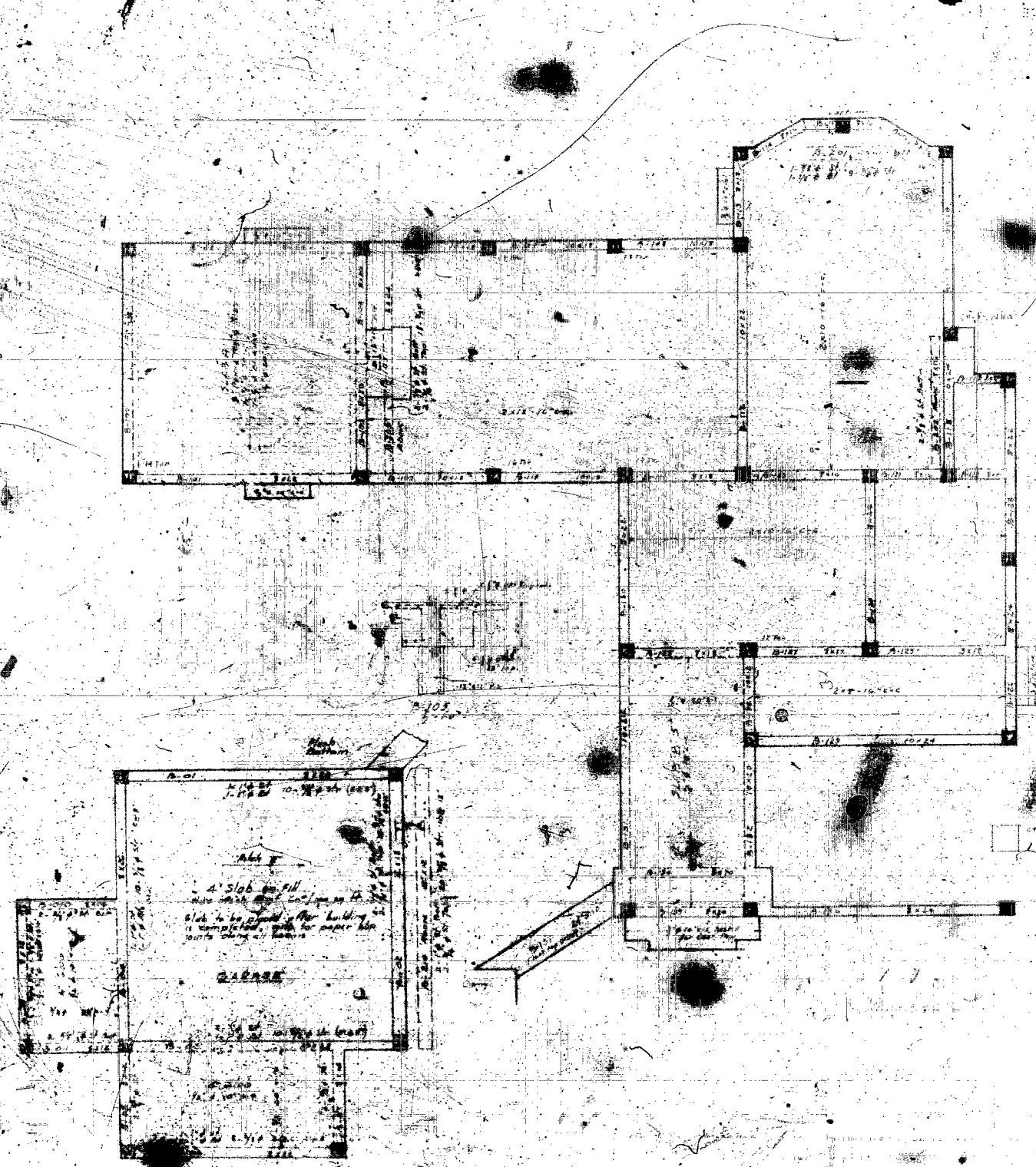
Card #

CUMULATIVE COST OF CONSTRUCTION OF PERMITS ISSUED

DATE	PROCESS	DESCRIPTION	WORK	CUMULATIVE	APPRAISED BLDG.		BUILDING
ISSUED	NO.	OF WORK	COST	WORK COST	VALUE BEFORE REMODEL	%	PERMIT NO.
7-24-89		Re-roof + 28 sqs.	\$7,600.00				RS891764

BUILDING PERMITS: #BS891764 - 7-24-89 - All Pro Roofing - Reroof 28 sqs. - \$7,600.00 *et*





**B.E.M. SCHEDULE**

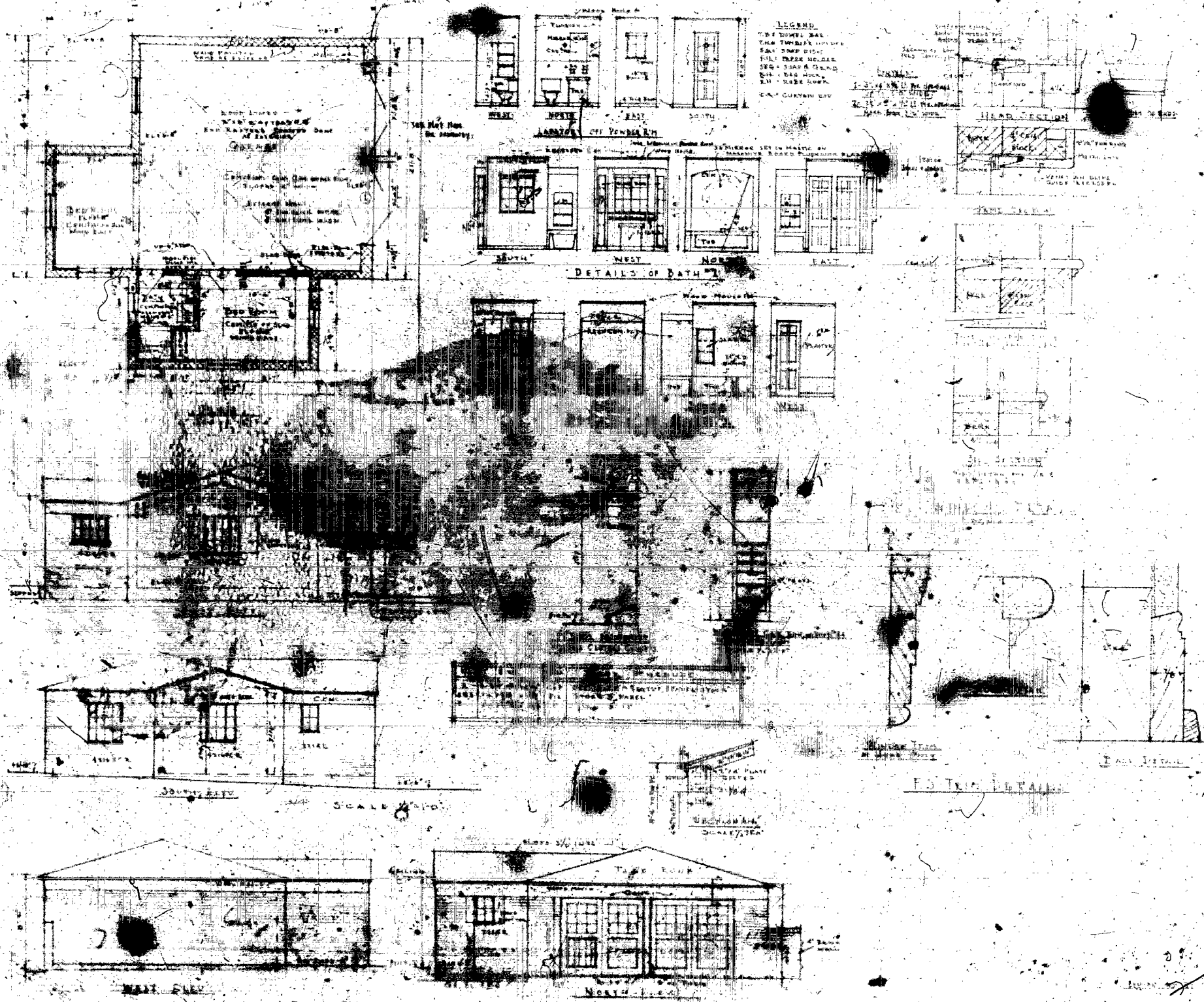
MARK	DESCRIPTION	QUANTITY	UNIT	REMARKS
B-101	CONCRETE	10.00	CU YD	
B-102	STEEL	150.00	LB	
B-103	FORMS	200.00	SQ FT	
B-104	REINFORCING	50.00	LB	
B-105	BRICK	10000.00	BRICK	
B-106	MORTAR	500.00	CU YD	
B-107	CEMENT	100.00	BALE	
B-108	WOOD	50.00	CU YD	
B-109	PAINT	10.00	GALE	
B-110	GLASS	100.00	SQ FT	
B-111	DOORS	5.00	EA	
B-112	WINDOWS	10.00	EA	
B-113	ROOFING	1000.00	SQ FT	
B-114	PLASTER	500.00	SQ FT	
B-115	CEILING	1000.00	SQ FT	
B-116	FLOORING	1000.00	SQ FT	
B-117	MECHANICAL	100.00	EA	
B-118	ELECTRICAL	100.00	EA	
B-119	LANDSCAPE	100.00	SQ FT	
B-120	PAVING	100.00	SQ FT	

**CONCRETE**  
 1. Use a mix approved by the Engineer. 2. Place concrete in layers. 3. Cure concrete for 7 days.

**STEEL**  
 1. Use A36 steel. 2. All steel must be galvanized. 3. Galvanizing must be done before painting.

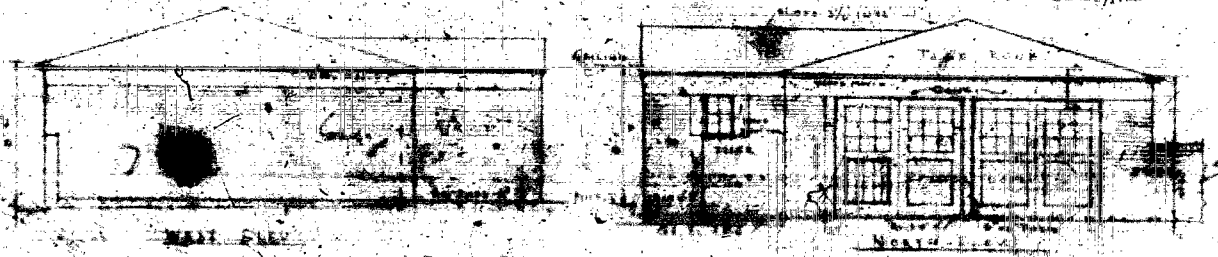
**FORMS**  
 1. Substantial and rigid. 2. All concrete shall be cast into forms. 3. Forms shall be removed when concrete has gained sufficient strength.

**REINFORCING**  
 1. Use #4 bars. 2. Bars shall be spaced as shown on drawings. 3. Bars shall be lapped and tied.

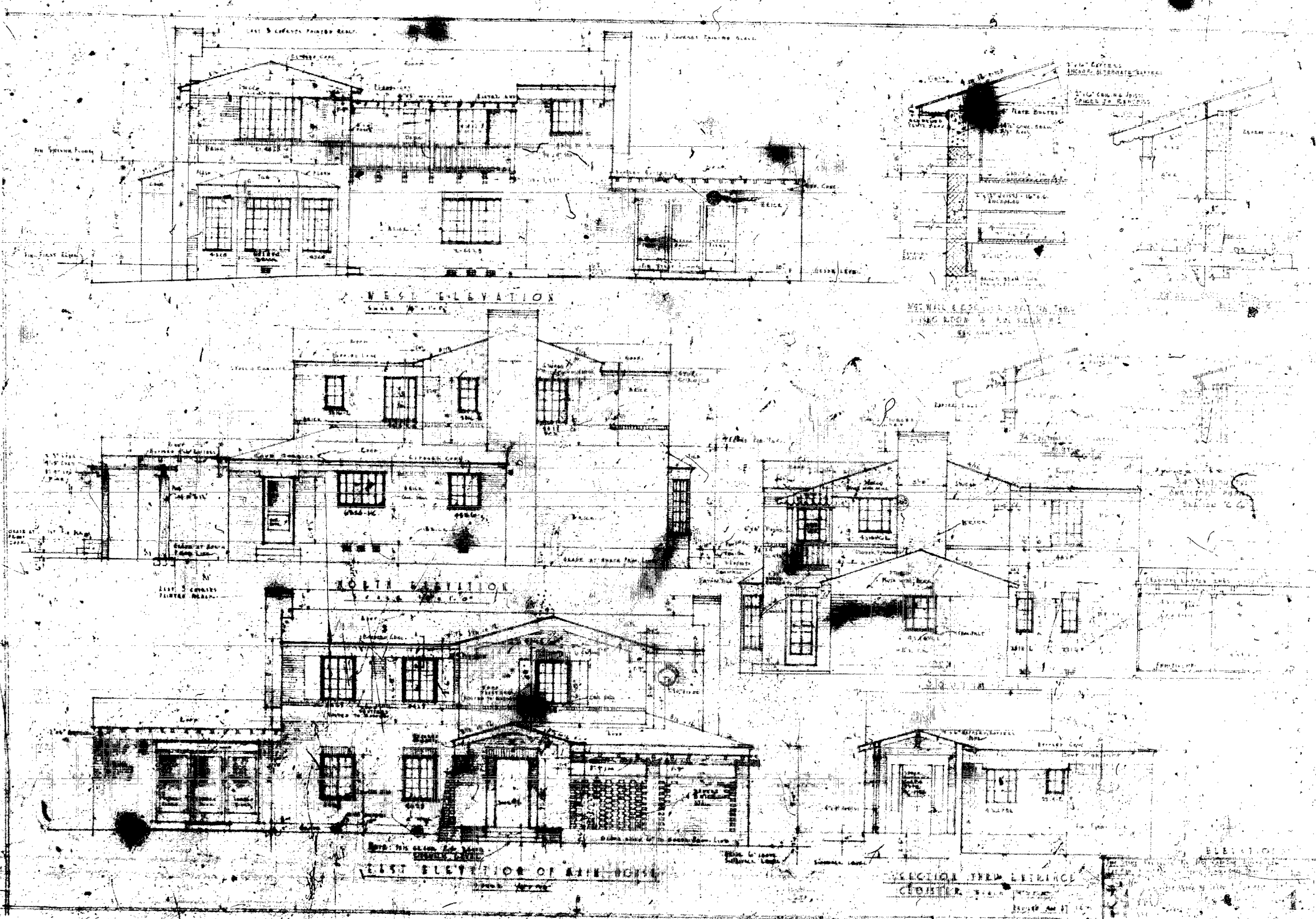


SCALE 1/8" = 1'-0"

ELEVATION DETAILS



1941



WEST ELEVATION

NORTH ELEVATION

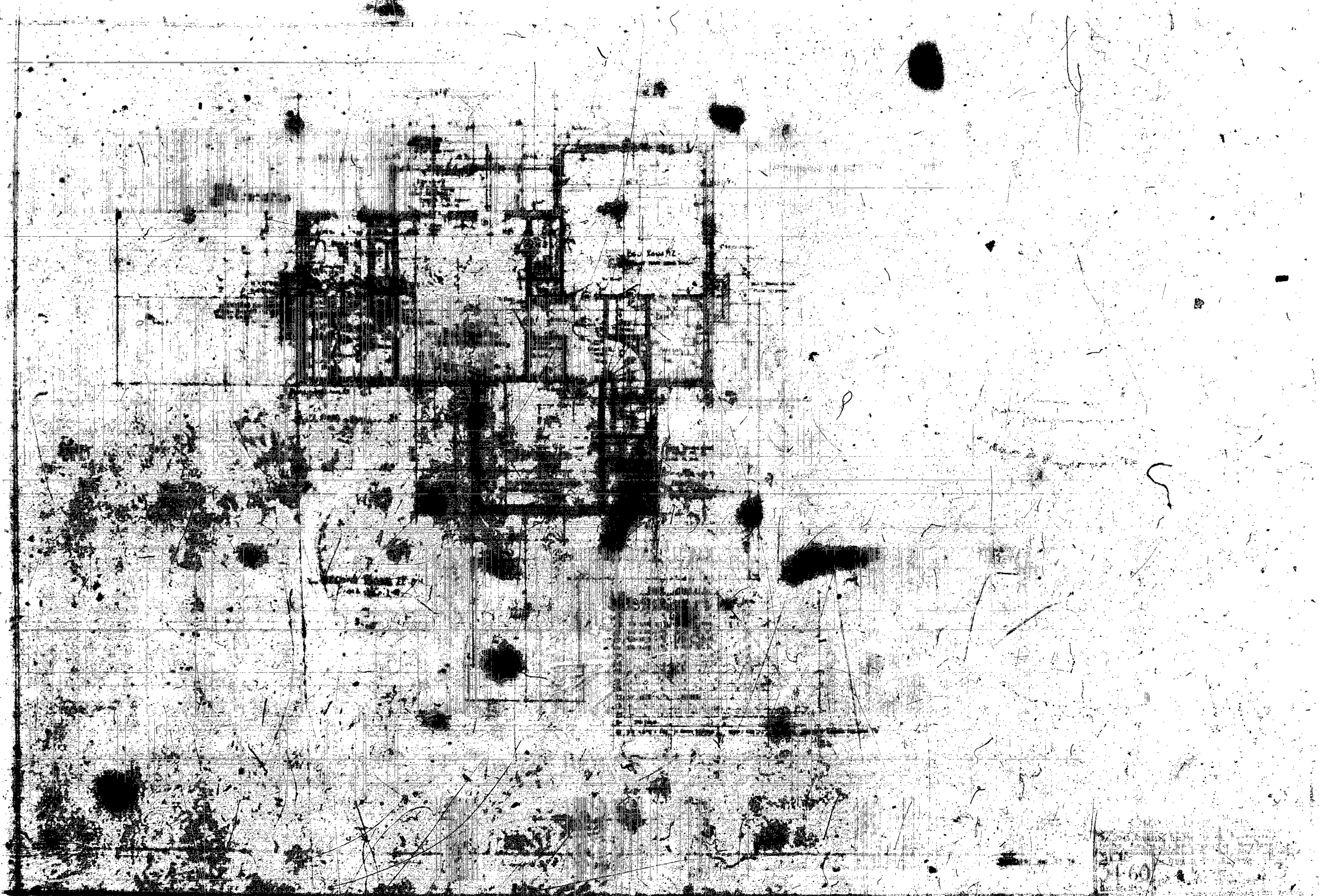
EAST ELEVATION OF MAIN HOUSE

SECTION THROUGH ENTRANCE

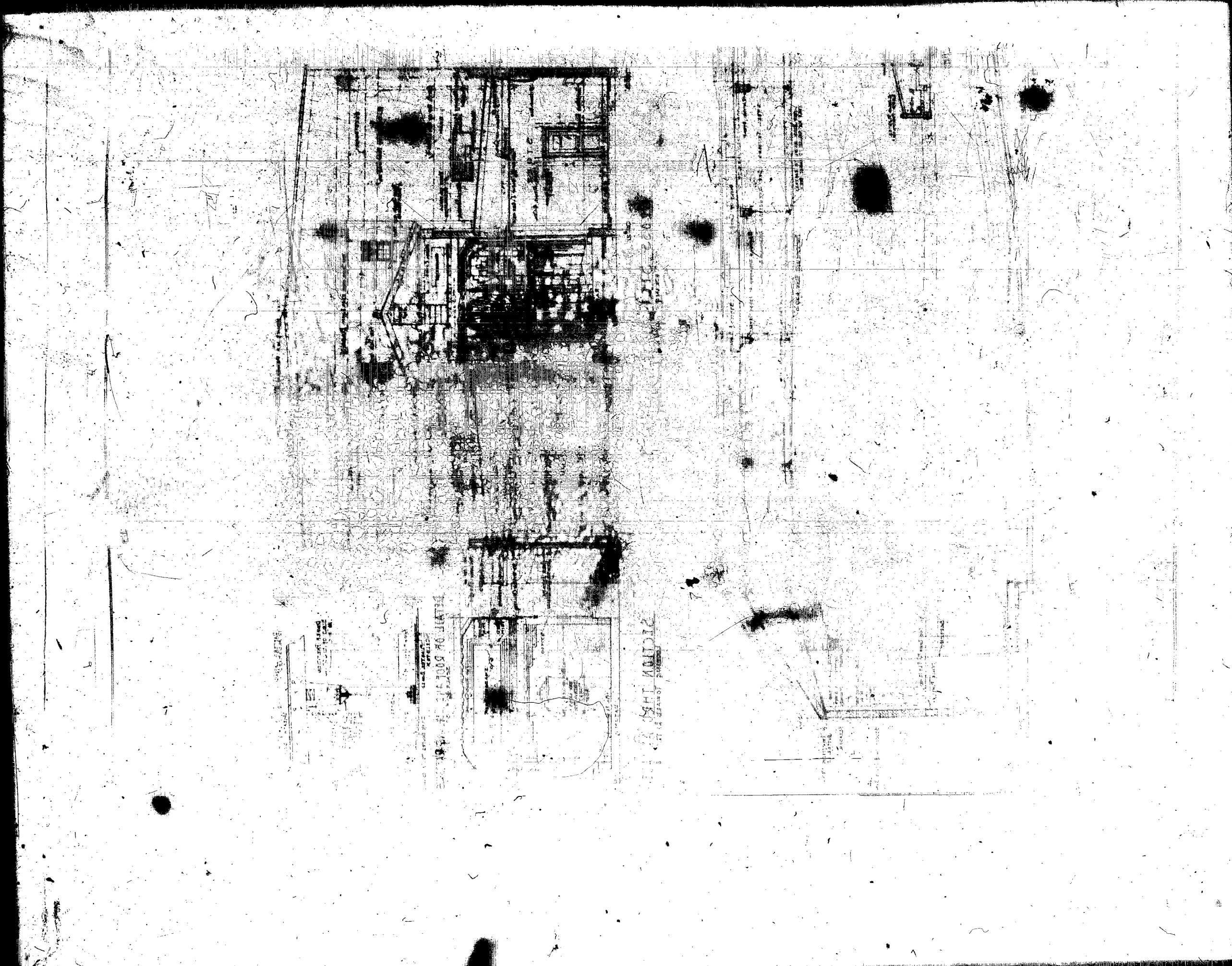
ELEVATION



3



3160

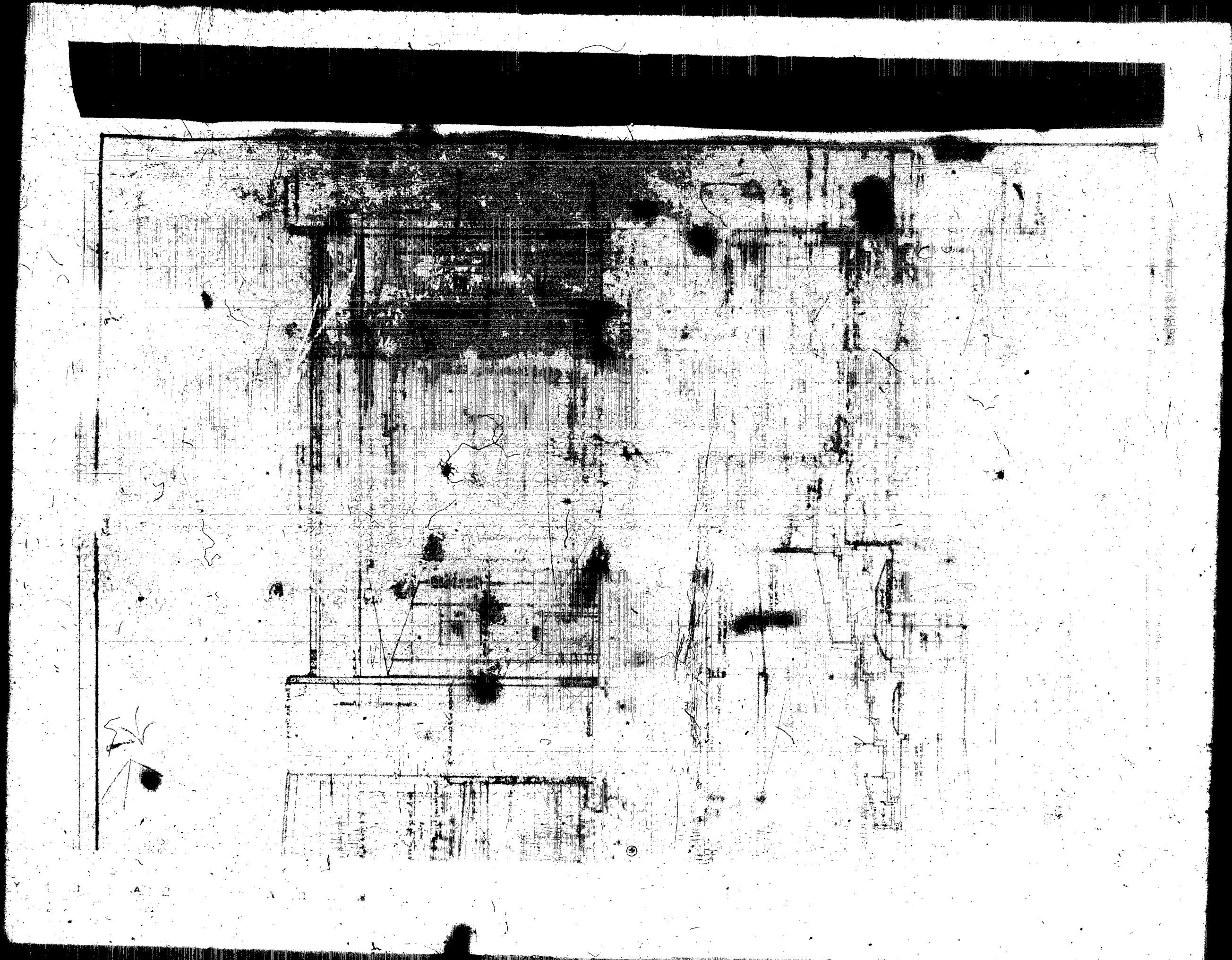


PLAN OF ROOM 101  
GENERAL CONTRACTOR

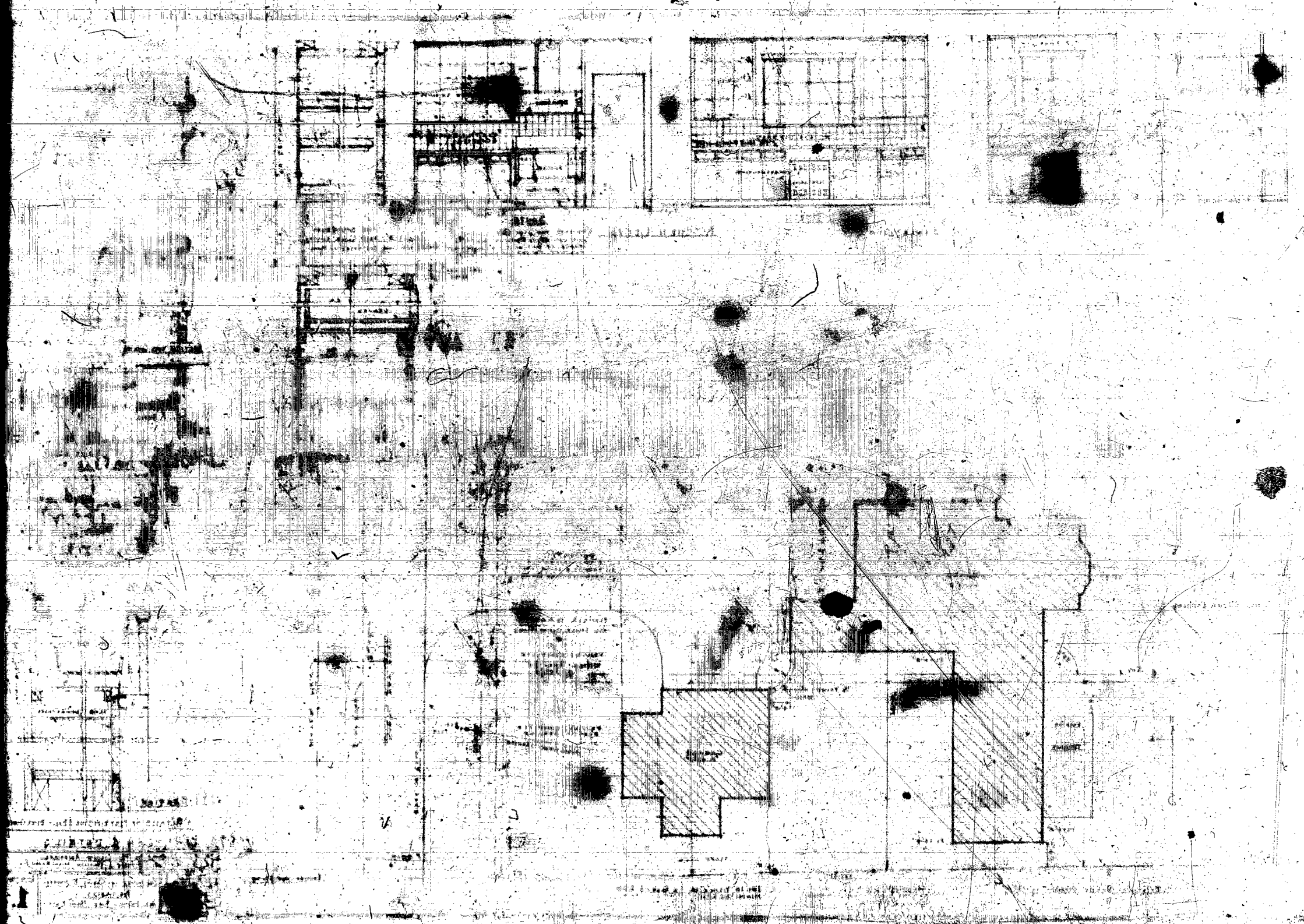
PLAN OF ROOM 101  
GENERAL CONTRACTOR

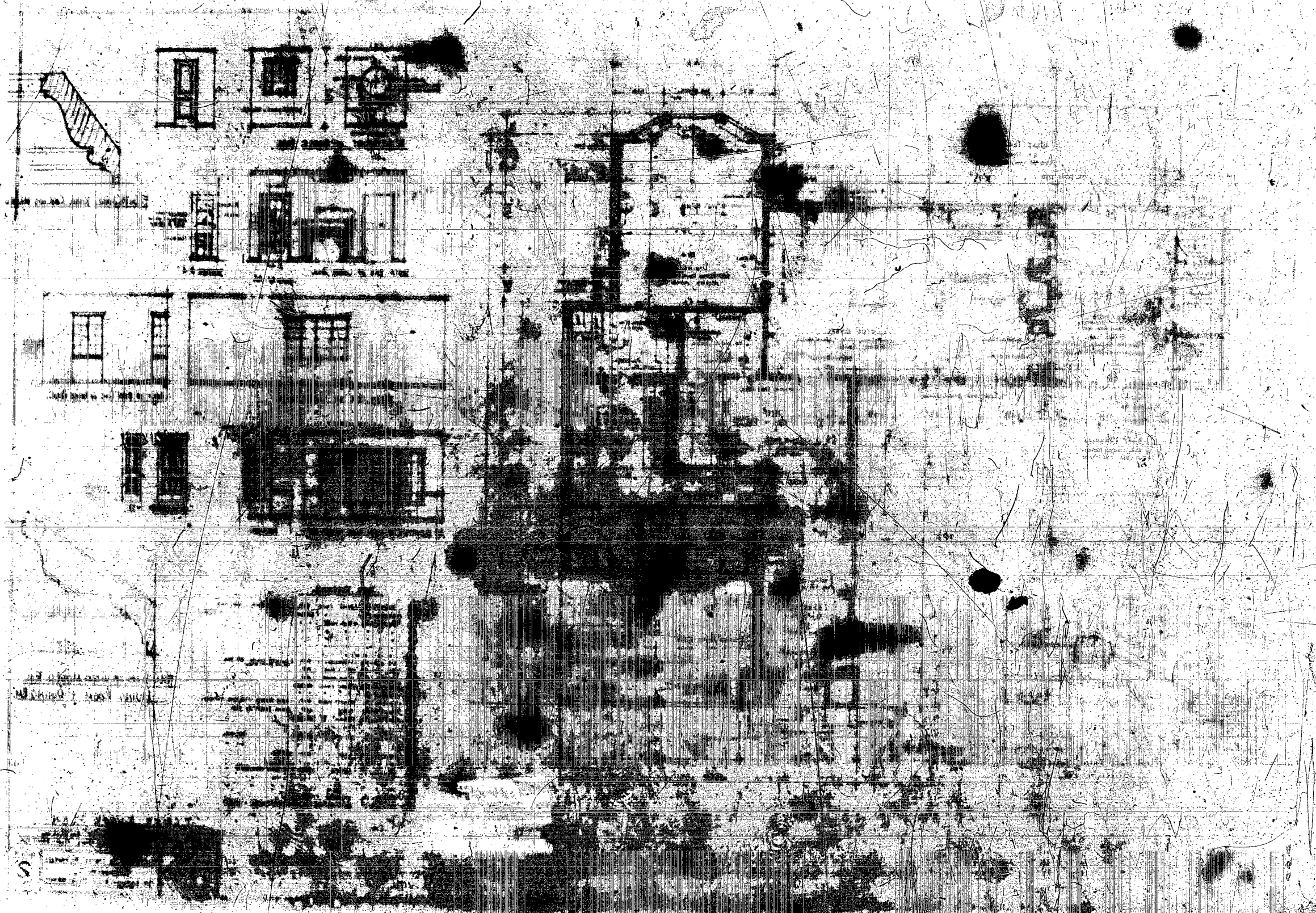
PLAN OF ROOM 101  
GENERAL CONTRACTOR

PLAN OF ROOM 101  
GENERAL CONTRACTOR









PLAN OF THE BUILDING

Scale 1/4" = 1'-0"



March 10, 2016

Justine Velez  
Urban Robot Associates  
420 Lincoln Road, Suite 406  
Miami Beach, FL 33139  
T.786.246.4857, C.617.285.6713, F.786.768.2537  
[Justine@urbanrobot.net](mailto:Justine@urbanrobot.net)

Re: Tree Evaluation and Report for 5350 through 5370 North Bay Road, Miami Beach, Florida

Dear Ms. Velez,

We visited the above mentioned property on March 1, 2016 to review the existing trees and palms found on the property and produce a tree evaluation report. Please find below photographs of all of the trees and palms and their health condition at the time of our visit. Please note that our assessment was performed as a visual inspection from the ground and no aerial inspections were performed.

#### **Overview**

The overall site is made up of two lots, one is a developed lot with an existing single family home (5350) and the second is a landscaped open space with an entry structure and driveway. The lots face east to west, whereas the west facing is Biscayne Bay.

We utilized a tree survey performed by Hadonne Land Surveyors and Mappers, dated, November 23, 2015. We have attached an Excel spreadsheet that corresponds with the numbering placed on the tree survey and provided additional details for each tree and/or palm found on the property that includes the type, overall height, width, clear trunk for palms, diameter at breast height (dbh) and a health condition percentage.

**Please find our tree report below:**

JTC Management Group, Inc.  
2500 Southwest 21<sup>st</sup> Street  
Fort Lauderdale, Florida 33312  
t 754 551 6954  
c 954 612 2500  
jtcgroup.inc@gmail.com



**Tree #1 through #5**



**Tree #1 – #4** Pygmy Date palm, *Phoenix roebelenii*, approximately 16 feet tall with a canopy width of 15 feet. The clear trunk is approximately 8 feet and we measured the trunk diameter at breast height and each trunk was five inches. There are a total of five trunks within this grouping. The palm is in good condition with a health condition of 90%.

**Tree #5** – Pygmy Date palm, *Phoenix roebelenii*, approximately 14 feet tall with a canopy width of 15 feet. The clear trunk is approximately 8 feet and we measured the trunk diameter at breast height and each trunk was four inches. There are a total of three trunks within this grouping. The palm is in good condition with a health condition of 90%.

## Tree #6 – 9



**Tree #6** – Alexander palm, *Ptychosperma elegans*, approximately 30 feet tall with a canopy width of 6 feet. The clear trunk is approximately 24 feet and we measured the trunk diameter at breast height which was 4 inches, indicated by the yellow arrow. The palm is in good condition with a health condition of 75%.

**Tree #7** – Alexander palm, *Ptychosperma elegans*, approximately 30 feet tall with a canopy width of 6 feet. The clear trunk is approximately 24 feet and we measured the trunk diameter at breast height which was 4 inches, indicated by the black arrow. The palm is in good condition with a health condition of 80%.

**Tree #8** – Pygmy Date palm, *Phoenix roebelenii*, approximately 16 feet tall with a canopy width of 10 feet. The clear trunk is approximately 10 feet and we measured the trunk diameter at breast height and each trunk was four inches, indicated by the orange arrow. There are a total of two trunks. The palm is in good condition with a health condition of 85%.

**Tree #9** – Mexican cycad, *Dioon edule*, approximately 10 feet tall with a canopy width of 10 feet. The clear trunk is approximately 3 feet and we measured the trunk diameter at breast height and it was 12 inches, indicated by the red arrow. There are a total of two trunks. The palm is in good condition with a health condition of 85%.



**Tree #10 & #12**



**Tree #11**



**Tree #10** – Pygmy Date palm, *Phoenix roebelenii*, approximately 8 feet tall with a canopy width of 8 feet. The clear trunk is approximately 6 feet and we measured the trunk diameter at breast height and the trunk was four inches, indicated by red arrow. The palm is in poor condition with a health condition of 60%. The palm is showing signs of decline.

**Tree #11** – Royal palm, *Roystonea elata*, approximately 45 feet tall with a canopy width of 15 feet. The clear trunk is approximately 32 feet and the trunk diameter was 16 inches. The palm is in fair condition with a health condition of 70%. The fronds are smaller than typically observed and the trunk is showing signs of penciling.

**Tree #12** – Christmas palm, *Adonidia merrilli*, approximately 26 feet tall with a canopy width of 12 feet. The clear trunk is approximately 16 feet and the trunk diameter for each of the three trunks was 6 inches. The palm is in good condition with a health condition of 85%.

**Tree #13 - #15**



**Tree #16 - #22**



**Tree #13** – Christmas palm, *Adonidia merrilli*, approximately 26 feet tall with a canopy width of 12 feet. The clear trunk is approximately 16 feet and the trunk diameter for each of the three trunks was 6 inches, indicated by the black arrow. The palm is in good condition with a health condition of 85%.

**Tree #14** – Alexander palm, *Ptychosperma elegans*, approximately 20 feet tall with a canopy width of 8 feet. The clear trunk is approximately 14 feet and we measured the trunk diameter at breast height which was 3 inches, indicated by the blue arrow. The palm is in good condition with a health condition of 85%.

**Tree #15** – Queen palm, *Syagrus romanzoffiana*, approximately 30 feet tall with a canopy width of 12 feet. The clear trunk is approximately 20 feet and the trunk diameter was 10 inches indicated by the red arrow. The palm is in good condition with a health condition of 80%.

**Tree #16** – Not pictured. Dead stump.

**Tree #17** – Chinese fan palm, *Livistona chinensis*, approximately 24 feet tall with a canopy width of 10 feet. The clear trunk is approximately 12 feet and the trunk diameter for each of the three trunks was 6 inches. The palm is in good condition with a health condition of 80%. Indicated by the black arrow on right photograph.

**Tree #18** – Queen palm, *Syagrus romanzoffiana*, approximately 30 feet tall with a canopy width of 12 feet. The clear trunk is approximately 20 feet and the trunk diameter was 8 inches indicated by the red arrow. The palm is in good condition with a health condition of 75%.

**Tree #19** – Queen palm, *Syagrus romanzoffiana*, approximately 30 feet tall with a canopy width of 8 feet. The clear trunk is approximately 20 feet and the trunk diameter was 6 inches indicated by the red arrow. The palm is in fair condition with a health condition of 65%.

**Tree #20** – Chinese fan palm, *Livistona chinensis*, approximately 26 feet tall with a canopy width of 10 feet. The clear trunk is approximately 16 feet and the trunk diameter for the palm was 10 inches. The palm is in good condition with a health condition of 80%. Indicated by the black arrow on right photograph.

**Tree #21** – Chinese fan palm, *Livistona chinensis*, approximately 26 feet tall with a canopy width of 10 feet. The clear trunk is approximately 16 feet and the trunk diameter was 12 inches. The palm is in good condition with a health condition of 80%. Indicated by the black arrow on right photograph.

**Tree #22** – Christmas palm, *Adonidia merrilli*, approximately 24 feet tall with a canopy width of 10 feet. The clear trunk is approximately 14 feet and the trunk diameter for all of the three trunks was 14 inches. The palm is in good condition with a health condition of 80% and indicated by the yellow arrow above and on the right.



**Tree #23 - #31**



**Tree #23** – Alexander palm, *Ptychosperma elegans*, approximately 12 feet tall with a canopy width of 6 feet. The clear trunk is approximately 6 feet and we measured the trunk diameter of the two trunks at breast height which was 5 inches. The palm is in good condition with a health condition of 80%.

**Tree #24** – Chinese fan palm, *Livistona chinensis*, approximately 30 feet tall with a canopy width of 15 feet. The clear trunk is approximately 22 feet and the trunk diameter for the three trunks was 20 inches. The palm is in very good condition with a health condition of 90%. Indicated by red arrow.

**Tree #25** – Alexander palm, *Ptychosperma elegans*, approximately 30 feet tall with a canopy width of 10 feet. The clear trunk is approximately 20 feet and we measured the trunk diameter of the three trunks at breast height which was 8 inches. The palm is in good condition with a health condition of 80%.

**Tree #26** – Christmas palm, *Adonidia merrillii*, approximately 24 feet tall with a canopy width of 6 feet. The clear trunk is approximately 18 feet and the trunk diameter was 6 inches for each of the two trunks. The palm is in good condition with a health condition of 80%.

**Tree #27** – Alexander palm, *Ptychosperma elegans*, approximately 24 feet tall with a canopy width of 10 feet. The clear trunk is approximately 12 feet and we measured the trunk diameter of the three trunks at breast height

which was 8 inches. The palm is in good condition with a health condition of 80%.

**Tree #28** – Alexander palm, *Ptychosperma elegans*, approximately 30 feet tall with a canopy width of 10 feet. The clear trunk is approximately 12 feet and we measured the trunk diameter of the three trunks at breast height which was 11 inches. The palm is in good condition with a health condition of 80%.

**Tree #29** – Chinese fan palm, *Livistona chinensis*, approximately 10 feet tall with a canopy width of 10 feet. The clear trunk is approximately 3 feet and the trunk diameter was 12 inches. The palm is in good condition with a health condition of 80%. Indicated by the yellow arrow.

**Tree #30** – Alexander palm, *Ptychosperma elegans*, approximately 30 feet tall with a canopy width of 10 feet. The clear trunk is approximately 22 feet and we measured the trunk diameter of the three trunks at breast height which was 10 inches. The palm is in good condition with a health condition of 80%.

**Tree #31** – Alexander palm, *Ptychosperma elegans*, approximately 35 feet tall with a canopy width of 10 feet. The clear trunk is approximately 26 feet and we measured the trunk diameter of the two trunks at breast height which was 8 inches. The palm is in good condition with a health condition of 80%.

**Tree # 32 - #35**



**Tree #32** – Chinese fan palm, *Livistona chinensis*, approximately 30 feet tall with a canopy width of 15 feet. The clear trunk is approximately 14 feet and the trunk diameter of the three trunks was 24 inches, indicated by the red arrow. The palm is in very good condition with a health condition of 90%.

**Tree #33** – Christmas palm, *Adonidia merrillii*, approximately 28 feet tall with a canopy width of 15 feet. The clear trunk is approximately 16 feet and the trunk diameter for the three trunks was 15 inches indicated by the yellow arrow. The palm is in good condition with a health condition of 85%.

**Tree #34** – Christmas palm, *Adonidia merrillii*, approximately 22 feet tall with a canopy width of 6 feet. The clear trunk is approximately 14 feet and the trunk diameter was 4 inches, indicated by the blue arrow. The palm is in good condition with a health condition of 75%.

**Tree #35** – Queen palm, *Syagrus romanzoffiana*, approximately 35 feet tall with a canopy width of 15 feet. The clear trunk is approximately 20 feet and the trunk diameter was 11 inches, no arrow. The palm is in good condition with a health condition of 80%.



**Tree #36 & 37**



**Tree #36** – Christmas palm, *Adonidia merrillii*, approximately 24 feet tall with a canopy width of 12 feet. The clear trunk is approximately 16 feet and the trunk diameter for the two trunks was 12 inches. The palm is in good condition with a health condition of 85%.

**Tree #37** – Christmas palm, *Adonidia merrillii*, approximately 30 feet tall with a canopy width of 12 feet. The clear trunk is approximately 20 feet and the trunk diameter two trunks was 12 inches, indicated by the red arrow. The palm is in good condition with a health condition of 85%.

**Tree # 38 – 41**



**Tree #38** – Queen palm, *Syagrus romanzoffiana*, approximately 40 feet tall with a canopy width of 15 feet. The clear trunk is approximately 30 feet and the trunk diameter was 10 inches, indicated by the red arrow. The palm is in fair condition with a health condition of 70%.

**Tree #39** – Queen palm, *Syagrus romanzoffiana*, approximately 30 feet tall with a canopy width of 12 feet. The clear trunk is approximately 18 feet and the trunk diameter was 8 inches, no arrow. The palm is in fair condition with a health condition of 70%.

**Tree #40** – Queen palm, *Syagrus romanzoffiana*, approximately 20 feet tall with a canopy width of 10 feet. The clear trunk is approximately 8 feet and the trunk diameter was 8 inches, no arrow. The palm is in good condition with a health condition of 80%.

**Tree #41** – Queen palm, *Syagrus romanzoffiana*, approximately 20 feet tall with a canopy width of 10 feet. The clear trunk is approximately 8 feet and the trunk diameter was 7 inches, yellow arrow. The palm is in good condition with a health condition of 75%.

**Tree #42 – 44**



**Tree #42** – Alexander palm, *Ptychosperma elegans*, approximately 16 feet tall with a canopy width of 8 feet. The clear trunk is approximately 10 feet and we measured the trunk diameter of the two trunks at breast height which was 9 inches, pictured at the far left. The palm is in good condition with a health condition of 75%.

**Tree #43** – Alexander palm, *Ptychosperma elegans*, approximately 18 feet tall with a canopy width of 6 feet. The clear trunk is approximately 12 feet and we measured the trunk diameter of the two trunks at breast height which was 6 inches. The palm is in poor condition with a health condition of 65%. One of the two trunks is declining.

**Tree #44** – Alexander palm, *Ptychosperma elegans*, approximately 20 feet tall with a canopy width of 8 feet. The clear trunk is approximately 12 feet and we measured the trunk diameter of the two trunks at breast height which was 6 inches. The palm is in good condition with a health condition of 75%.



**Tree #45 & 46**



**Tree #45** – Alexander palm, *Ptychosperma elegans*, approximately 30 feet tall with a canopy width of 10 feet. The clear trunk is approximately 22 feet and we measured the trunk diameter of the two trunks at breast height which was 6 inches, indicated by the red arrow. The additional palms are on the adjacent property to the north. The palm is in good condition with a health condition of 80%.

**Tree #46** – Areca palm, *Dypsis lutescens*, approximately 14 feet tall with a canopy width of 10 feet. The clear trunk is approximately 8 feet and we measured the trunk diameter of the all of the trunks at breast height which was 15 inches. The palm is in good condition with a health condition of 75%.

**Tree #47**



**Tree #47-** Bottlebrush, *Callistemon viminalis*, approximately 15 feet tall with a canopy width of 18 feet and we measured the trunk diameter (dbh) 14 inches. The tree is in fair condition with a health condition of 50%. We observed codominant trunks with trunk damage including a cavity at the base. The form is poor and the tree is under the overhead powerlines.

**Tree #48**



**Tree #48-** Black Olive, *Bucida buceras*, approximately 30 feet tall with a canopy width of 25 feet and we measured the trunk diameter (dbh) which was 27 inches. The tree is in fair condition with a health condition of 50%. We observed three codominant trunks that originate within one foot of the ground. The tree is directly under the overhead powerlines and has been hatracked.

**Tree #49 & #50**

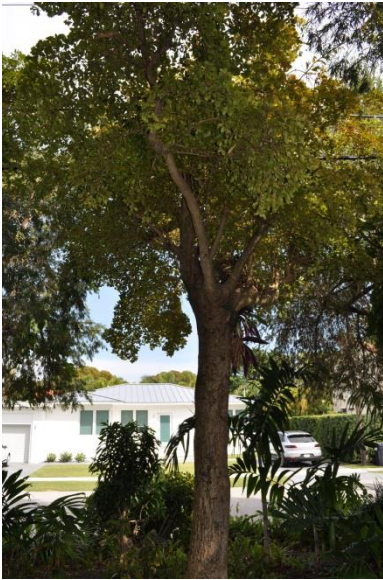


**Tree #49 -** Bottlebrush, *Callistemon viminalis*, approximately 30 feet tall with a canopy width of 20 feet and we measured the trunk diameter (dbh) and it was 18 inches. The tree is in very poor condition with a health condition of 30%. We observed codominant trunks with large trunk cavities. The tree is under the overhead powerlines and has been utility pruned. We observed dieback throughout the canopy.

**Tree #50 -** Papaya, *Carica papaya*, approximately 10 feet tall with a canopy width of 3 feet and we measured the trunk diameter (dbh) and it was 3 inches. The fruit tree is an understory plant indicated by the red arrow in the photograph on the left, the health condition is 60%.



**Tree #51**



**Tree #52**



**Tree #52**



**Tree #51-** Black Olive, *Bucida buceras*, approximately 25 feet tall with a canopy width of 15 feet and we measured the trunk diameter (dbh) which was 13 inches. The tree is in poor condition with a health condition of 35%. We observed that the tree is directly under the overhead powerlines and has been hatracked. The canopy has stubs and extensive decay.

**Tree #52 -** Bottlebrush, *Callistemon viminalis*, approximately 30 feet tall with a canopy width of 25 feet and we measured the trunk diameter (dbh) and it was 34 inches. The tree is in fair condition with a health condition of 45%. We observed four codominant trunks with bark inclusions and trunk damage. The tree is under the overhead powerlines and has been utility pruned resulting in extensives wounds with decay.

**Tree #53 & #54**



**Tree #55**



**Tree #56**



**Tree #57**



**Tree #53** – Alexander palm, *Ptychosperma elegans*, approximately 26 feet tall with a canopy width of 8 feet. The clear trunk is approximately 4 feet and we measured the trunk diameter which was 4 inches. The palm is in good condition with a health condition of 80%.

**Tree #54** – *Bougainvillea spp.* approximately 16 feet tall with a canopy width of 10 feet. The trunk diameter of the plant at breast height was 5 inches. The health condition was 70%.

**Tree #55** – Pygmy Date palm, *Phoenix roebelenii*, approximately 12 feet tall with a canopy width of 8 feet. The clear trunk is approximately 8 feet and we measured the trunk diameter at breast height and the trunk was four inches. The palm is in good condition with a health condition of 80%.

**Tree #56** – Alexander palm, *Ptychosperma elegans*, approximately 22 feet tall with a canopy width of 8 feet. The clear trunk is approximately 14 feet and we measured the trunk diameter at breast height which was 4 inches. The palm is in good condition with a health condition of 85%.

**Tree #57** – Mango, *Mangifera indica*, approximately 45 feet tall with a canopy width of 30 feet and we measured the trunk diameter (dbh) and it was 28 inches. The tree is in fair condition with a health condition of 55%. We observed codominant trunks with bark inclusions. The tree was previously hatracked at approximately 20 feet above the ground and has some recent storm damage on the north side.

**Tree #58**



**Tree #58** – Avocado, *Persea americana*, approximately 12 feet tall with a canopy width of 12 feet and we measured the trunk diameter (dbh) and it was 4 inches. The tree is in very poor condition with a health condition of 20%. The tree's trunk has been girdled and the tree has atrophied. The tree is effectively destroyed and we recommend removal.



Tree #59



Tree #60



Tree #61



**Tree #59** – Pygmy Date palm, *Phoenix roebelenii*, approximately 8 feet tall with a canopy width of 10 feet. The clear trunk is approximately 5 feet and we measured the three trunks and the diameter at breast height was 12 inches. The palm is in good condition with a health condition of 75%.

**Tree #60** – Alexander palm, *Ptychosperma elegans*, approximately 26 feet tall with a canopy width of 6 feet. The clear trunk is approximately 20 feet and we measured the trunk diameter at breast height which was 3 inches. The palm is in good condition with a health condition of 75%.

**Tree #61** – Tree Ligustrum, *Ligustrum japonicum*, approximately 10 feet tall with a canopy width of 10 feet and we measured the trunk diameter (dbh) and it was 12 inches. The tree is in fair condition with a health condition of 60%. We observed codominant trunks with damage and that the tree had been hatracked or shaped to maintain the size.



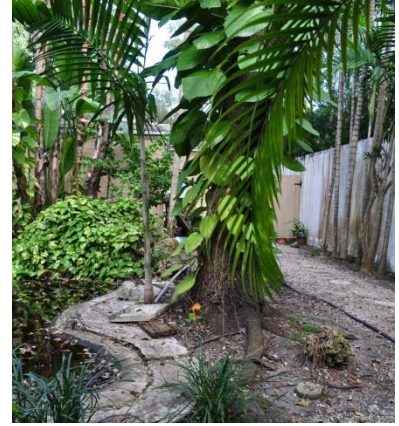
Tree #62 &amp; #63



Tree #64



Tree #65



**Tree #62** – Weeping Fig, *Ficus microcarpa*, approximately 30 feet tall with a canopy width of 25 feet and we measured the trunk diameter (dbh) and it was 13 inches. The tree is in fair condition with a health condition of 60%. We observed the tree has multiple trunks and very overcrowded.

**Tree #63** – White Bird of Paradise, *Strelitzia nicolai*, approximately 28 feet tall with a canopy width of 15 feet. The clear trunk is approximately 12 feet and we measured the trunk diameter at breast height which was 4 inches the plant has approximately 11 trunks. The palm is in good condition with a health condition of 75%.

**Tree #64** – Alexander palm, *Ptychosperma elegans*, approximately 32 feet tall with a canopy width of 8 feet. The clear trunk is approximately 22 feet and we measured the trunk diameter at breast height which was 4 inches. The palm is in good condition with a health condition of 80%.

**Tree #65** – Live Oak, *Quercus virginiana*, approximately 40 feet tall with a canopy width of 30 feet and we measured the trunk diameter (dbh) and it was 22 inches. The tree is in good condition with a health condition of 70%. We observed some insect activity and that the roots are deflected east to west by the pond on the north side of the tree.

**Tree #66 & #67**



**Tree #68 - #71**



**Tree #72 - #75**



**Tree #76 & 77**



**Tree #66 & #67** – Pleomele, *Dracaena reflexa*, 22 feet tall with a width of 15 feet, the dbh was 24". The health condition is 50%. The plant has four main stems and has been hatched.

**Tree #68 - 71** – Alexander palm, *Ptychosperma elegans*, approximately 26 - 32 feet tall with canopy widths of 8 - 10 feet. The clear trunks are approximately 20 - 24 feet and we measured the trunk diameter at breast height which was 3 and 4 inches. Tree #68 and #71 are doubles. The palms are in good condition with health condition of 80% for all of them.

**Tree #72** – Pleomele, *Dracaena reflexa*, 14 feet tall with a width of 4 feet, the dbh was 9". The health condition is 30%. The plant is declining and overcrowded.

**Tree #75** – Pleomele, *Dracaena reflexa*, 14 feet tall with a width of 6 feet, the dbh was 6". The health condition is 60%.

**Tree #73, 74, 76, 77** – Alexander palm, *Ptychosperma elegans*, approximately 28 - 32 feet tall with canopy widths of 6 - 10 feet. The clear trunks are approximately 18 - 24 feet and we measured the trunk diameter at breast height which was 3 and 4 inches. The palms are in fair to good condition with health condition of 70 - 80% for all of them.



Tree #78



Tree #79



Tree #80



**Tree #78** – Pygmy Date palm, *Phoenix roebelenii*, approximately 9 feet tall with a canopy width of 6 feet. The clear trunk is approximately 4 feet and we measured the trunk and the diameter at breast height was 4 inches. The palm is in good condition with a health condition of 85%.

**Tree #79** – Peregrina, *Jatropha integerrima*, approximately 10 feet tall with a canopy width of 10 feet and we measured the trunk diameter (dbh) and it was 8 inches. The tree is in good condition with a health condition of 65%. The plant has multiple trunks.

**Tree #80** – Alexander palm, *Ptychosperma elegans*, approximately 30 feet tall with a canopy width of 8 feet. The clear trunk is approximately 24 feet and we measured the trunk diameter at breast height which was 4 inches. The palm is in good condition with a health condition of 85%.

**Tree #81 - #92**



**Tree #81 - #85** – Alexander palm, *Ptychosperma elegans*, approximately 28 - 32 feet tall with canopy widths of 6 to 10 feet. The clear trunks are approximately 20 to 21 feet and we measured the trunk diameter at breast height which were 4 inches. There is one double within the grouping. The palms are in good condition with health conditions of 80%.

**Tree #86** – Papaya, *Carica papaya*, 14 feet tall and 3 feet wide, the trunk was 4 inches in diameter. The health condition is 60%.

**Tree #87 - #92** – Alexander palm, *Ptychosperma elegans*, approximately 28 - 30 feet tall with canopy widths of 6 to 10 feet. The clear trunks are approximately 16 to 22 feet and we measured the trunk diameters at breast height which was 4 inches except for #'s 90 and 92 which were a double and triple. The palms are in good condition with a health conditions of 75% and 80%.



**Tree #93 & #94**

Umbrella trees, *Schefflera actinophylla*, only found stumps.



**Tree #95 & #96**



**Tree #97 & #98**



**Tree #98**



**Tree #95** – Date palm, *Phoenix spp*, approximately 12 feet tall with a canopy width of 12 feet. The clear trunk is approximately 4 feet and we measured the trunk and the diameter at breast height was 14 inches. The palm is in good condition with a health condition of 80%.

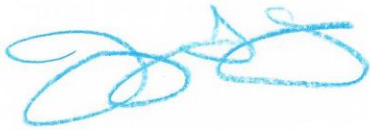
**Tree #96** – Alexander palm, *Ptychosperma elegans*, approximately 12 feet tall with a canopy width of 5 feet. The clear trunk is approximately 8 feet and we measured the trunk diameter at breast height which was 4 inches. The palm is in good condition with a health condition of 75%.

**Tree #97** – Alexander palm, *Ptychosperma elegans*, approximately 30 feet tall with a canopy width of 10 feet. The clear trunk is approximately 20 feet and we measured the trunk diameter at breast height which was 7 inches. The palm is in fair condition with a health condition of 70%. The palm has double trunks.

**Tree #98** – Pitch Apple, *Clusia rosea*, approximately 15 feet tall with a canopy width of 15 feet and we measured the trunk diameter (dbh) and it was 7 inches. The tree is in very poor condition with a health condition of 30%. The tree has a large wound on the trunk possibly from storm damage. The tree has poor form and is rubbing.

**End Report**

***I certify that all the statements of fact in this evaluation are true, complete, and correct to the best of my knowledge and belief, and are made in good faith.***



Jeremy T. Chancey  
**asca** AMERICAN SOCIETY of  
CONSULTING ARBORISTS  
ISA Certified Arborist FL 0762-A  
ISA Tree Risk Assessment Qualified  
LIAF Certified Landscape Inspector

JTC Management Group, Inc.  
2500 Southwest 21<sup>st</sup> Street  
Fort Lauderdale, Florida 33312  
t 754 551 6954  
c 954 612 2500  
jtcgroup.inc@gmail.com

