

PLANTING AREA LEGEND



Elliott's Lovegrass
Eragrostis elliottii
18" OC



Muhly Grass
Muhlenbergia capillaris
24" OC



Zoysia Turfgrass
1,000 SF



Wood Decking
1050 SF



Terrazzo Pavers
All outdoor hardscape areas -
patios, stairs, ramps - 24" x 24"

NOTES

PLANTING

ALL PLANT MATERIAL SHALL MEET OR EXCEED THE MINIMUM STANDARDS FOR FLORIDA NUMBER ONE AS PROVIDED IN THE MOST CURRENT EDITION OF "GRADES AND STANDARDS FOR NURSERY PLANTS, PART I AND II".

IRRIGATION

CONTRACTOR SHALL SUBMIT IRRIGATION SHOP DRAWINGS FOR SEPARATE PERMIT. SYSTEM SHALL BE INCLUSIVE OF POP-UP SPRINKLER HEADS, DRIP SYSTEM, TIMERS, RAIN GAUGE / SHUT-OFF, AND BACKFLOW PREVENTER. IRRIGATION SYSTEM SHALL BE DESIGNED AND TESTED TO PROVIDE 100% COVERAGE AND COMPLY WITH CITY OF MIAMI BEACH (CMB) BUILDING CODE.

RIGHT-OF-WAY

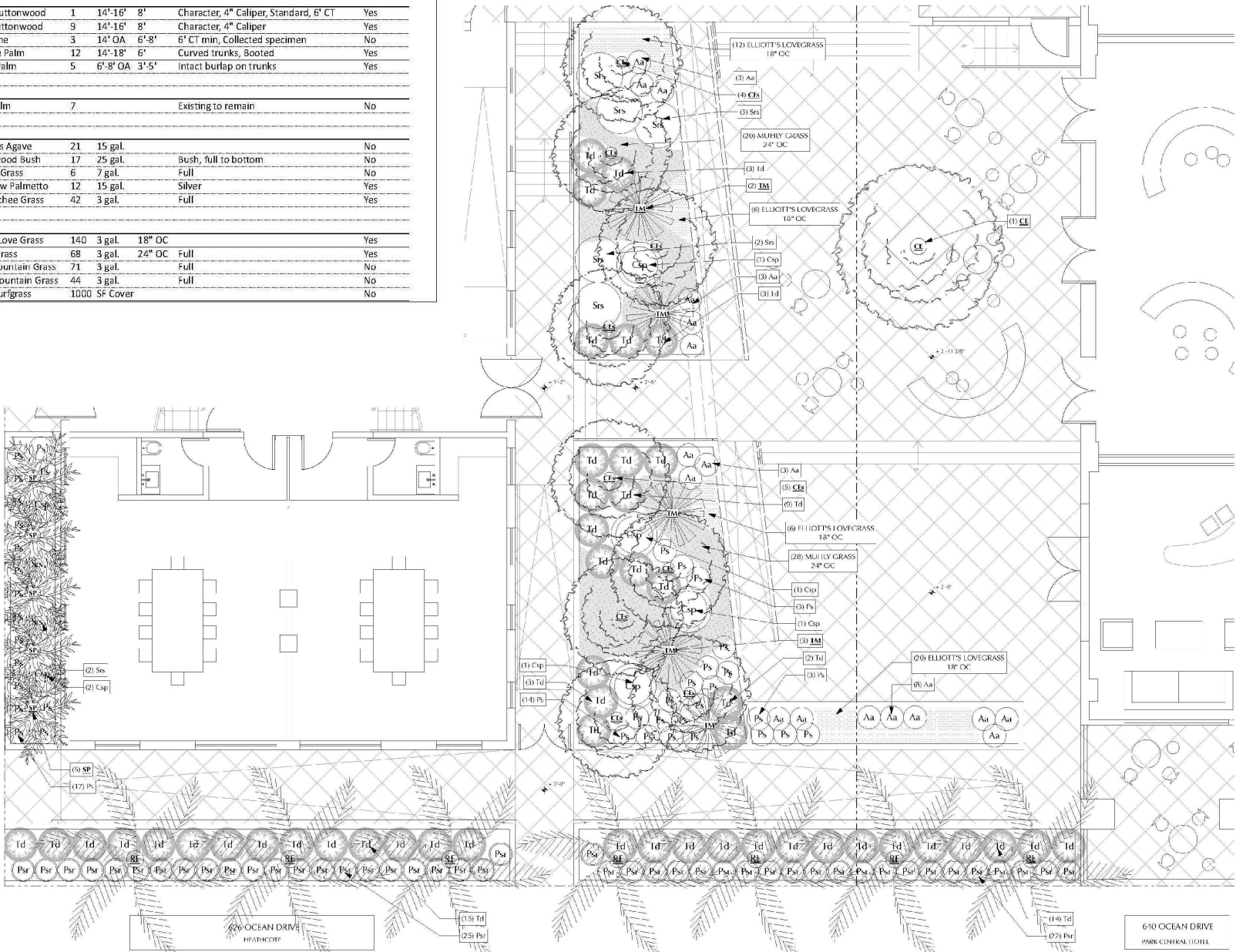
LANDSCAPE IMPROVEMENTS WITHIN RIGHT-OF-WAY WILL REQUIRE A SEPARATE CMB PUBLIC WORKS CONSTRUCTION PERMIT. LANDSCAPE MATERIALS SHALL BE MAINTAINED IN ACCORDANCE WITH THE DADE COUNTY PUBLIC WORKS MANUAL. STREET TREES SHALL MEET MIAMI DADE COUNTY AND CMB REQUIREMENTS.

PROJECT INFORMATION

REFER TO ARCHITECTURE AND STRUCTURAL FOR BUILDING INFORMATION.

PLANT SCHEDULE

Symbol	Scientific Name	Common Name	Qty	Size / Ht. Spread	Additional Specifications	FL Native
TREES & PALMS						
CE	<i>Conocarpus erectus</i>	Green Buttonwood	1	14'-16' 8'	Character, 4" Caliper, Standard, 6' CT	Yes
CEs	<i>Conocarpus erectus sericeus</i>	Silver Buttonwood	9	14'-16' 8'	Character, 4" Caliper	Yes
PT	<i>Pandanus spp.</i>	Screwpine	3	14' OA 6'-8'	6" CT min, Collected specimen	No
SP	<i>Sabal palmetto</i>	Cabbage Palm	12	14'-18' 6'	Curved trunks, Booted	Yes
TM	<i>Thrinax morisii</i>	Thatch Palm	5	6'-8' OA 3'-5'	Intact burlap on trunks	Yes
EXISTING TREES & PALMS						
RE	<i>Roystonea elata</i>	Royal Palm	7		Existing to remain	No
SHRUBS & ACCENTS						
Aa	<i>Agave attenuata</i>	Spineless Agave	21	15 gal.		No
Ce	<i>Conocarpus erectus</i>	Buttonwood Bush	17	25 gal.	Bush, full to bottom	No
Csp	<i>Cortaderia selloana pumila</i>	Pampas Grass	6	7 gal.	Full	No
Srs	<i>Serenoa repens 'Cinerea'</i>	Silver Saw Palmetto	12	15 gal.	Silver	Yes
Td	<i>Tripsacum dactyloides</i>	Fakahatchee Grass	42	3 gal.	Full	Yes
GROUNDCOVERS & VINES						
	<i>Eragrostis elliottii</i>	Elliott's Love Grass	140	3 gal. 18" OC		Yes
	<i>Muhlenbergia capillaris</i>	Muhly Grass	68	3 gal. 24" OC	Full	Yes
Ps	<i>Pennisetum setaceum 'Alba'</i>	White Fountain Grass	71	3 gal.	Full	No
Psr	<i>Pennisetum setaceum 'Rubrum'</i>	Purple Fountain Grass	44	3 gal.	Full	No
	<i>Zoysia spp.</i>	Zoysia Turfgrass	1000	SF Cover		No



APPROVED



Coontie



Bahama Wild Coffee



Fakahatchee Grass



Indian Hawthorn



White Bird of Paradise



Coconut Palm



Royal Palm



Florida Thatch Palm



Green Island Ficus



'Petite Pink' Oleander



Japanese Privet



Silver Buttonwood

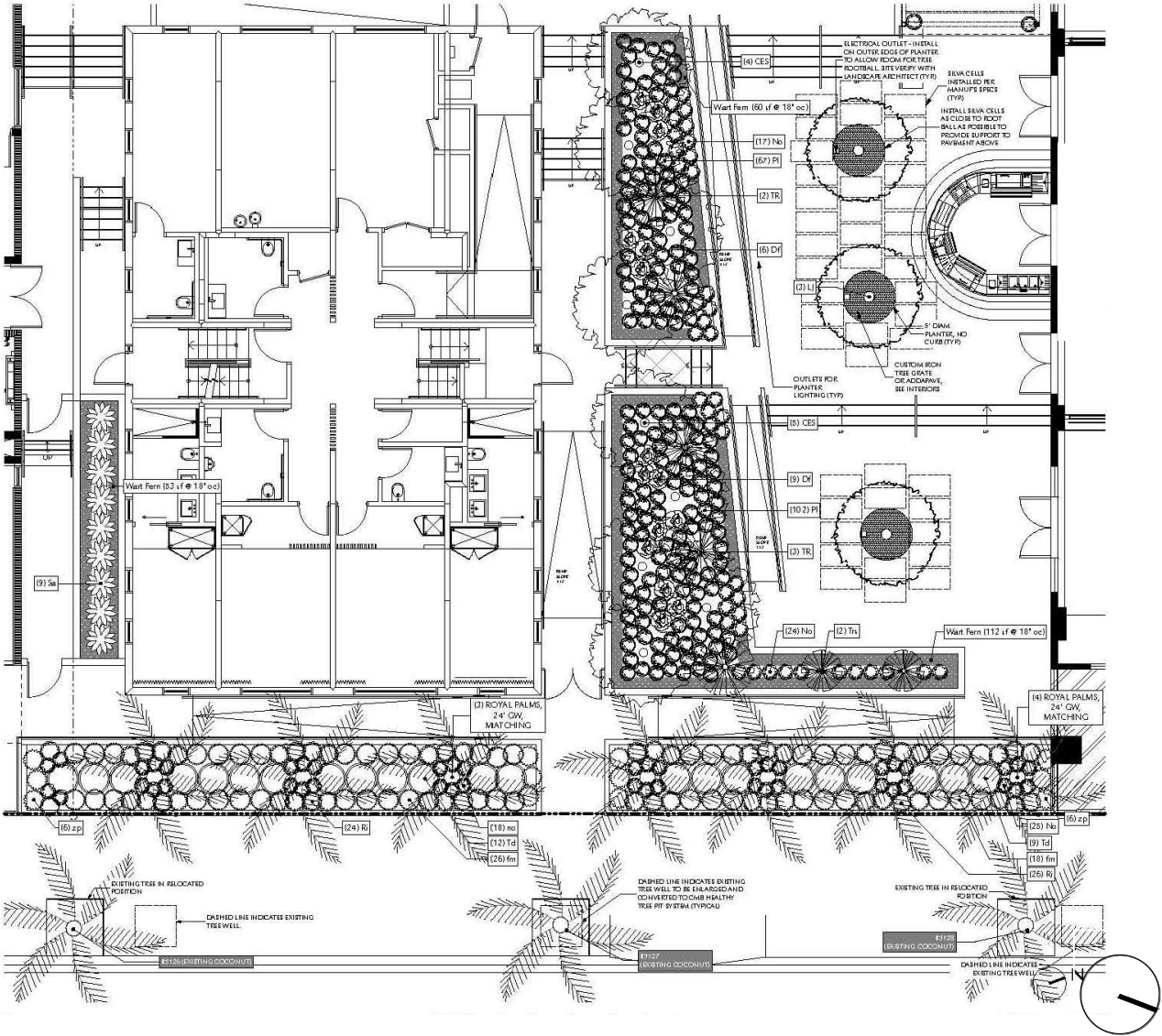


Dracaena 'Green Jewel'



Wart Fern

Symbol	Scientific Name	Common Name	Qty	Size / Ht.	Spread	Additional Specifications	FL Native
TREES & PALMS							
CES	<i>Conocarpus erectus</i> 'Sericeus'	Silver Buttonwood	9	14'-16'	8'	Character, 4" Caliper	Yes
LJ	<i>Ligustrum japonicum</i>	Japanese Privet	3	16' OA		6' CT, multi	No
RE	<i>Roystonea elata</i>	Royal Palm	7	24' GW			
TR	<i>Thrinax radiata</i>	Florida Thatch Palm	5	6'-8' OA	3'-5'	Intact burlap on trunks, Multi	Yes
EXISTING TREES & PALMS							
EC	<i>Cocos nucifera</i>	Coconut Palm	3			Existing to remain (Right of Way/Sidewalk)	No
SHRUBS & ACCENTS							
Cg	<i>Clusia guttifera</i>	Small Leaf Clusia	24	25 gal.		Bush, full to bottom, 8ft ht, matching	Yes
DF	<i>Dracaena fragrans</i> 'Green Jewel'	Chinese Moneytree	15	3 gal.		4' HT, Canes, Multi heads	
No	<i>Nerium oleander</i> 'Petite Pink'	Oleander	87	3 gal.			
PI	<i>Psychotria ligustrifolia</i>	Bahama Wild Coffee	169	3 gal.		Full	
Ri	<i>Rhaphiolepis indica</i>	Indian Hawthorn	50	3 gal.		Full	
Sa	<i>Streitzia alba</i>	White Bird of Paradise	22	15 gal.			
Trs	<i>Thrinax radiata</i>	Florida Thatch Palm	2	7 gal.			Yes
Td	<i>Tripsacum dactyloides</i>	Fakahatchee Grass	22	3 gal.		Full	Yes
GROUNDCOVERS & VINES							
fm	<i>Ficus microcarpa</i> 'Green Island'	Green Island Ficus	46	3 gal.			
[hatch]	<i>Ipomoea pes-caprae</i>	Railroad Vine	-	-		56 sq. ft. @ 24" oc	
[hatch]	<i>Microsorium scolopendrium</i>	Wart Fern	-	-		268 sq. ft. @ 18" oc	
pv	<i>Petrea volubilis</i>	Purple Queen's Wreath Vine	10	15 gal.		6' trellis	
sf	<i>Stephanotis floribunda</i>	Bridal Wreath	12	3 gal.		6' trellis	
zp	<i>Zamia pumila</i>	Coontie	58	7 gal.			



PROPOSED