

One Ocean - Franklin Penthouse					
Plant Schedule					
SYM	QTY	SCIENTIFIC NAME	COMMON NAME	MINIMUM SPECIFICATIONS	NOTES
Proposed Trees					
LJ1	1	Ligustrum Japonicum	Japanese Privet	FG; 7'HT; 5"SP	Specimen Tree - Multi-trunk
LJ2	2	Ligustrum Japonicum	Japanese Privet	FG; 14'HT; 12"SP	Specimen Tree - Multi-trunk
Proposed Palms					
VM1	3	Veitchia montgomeryana	Montgomery Palm	Single; 20'HT	Single trunk
VM2	4	Veitchia montgomeryana	Montgomery Palm	Single; 24'HT	Single trunk
VM3	9	Veitchia montgomeryana	Montgomery Palm	Single; 28'HT	Single trunk
Proposed Shrubs					
CG	28	Clusia guttifera	Small Leaf Clusia	7G; 36"HT; 24"O.C.	Full to base
FM	30	Ficus microcarpa 'Green Island'	Green Island Ficus	3G; 12"HT; 10"SP; 12"O.C.	Full to base
SR	8	Serenoa repens 'Cinerea'	Silver Saw Palmetto	7G; 24"HT; 18"O.C.	Full to base
Proposed Grasses/Groundcover/Vines					
TF	107	Tripsacum floridana	Dwarf Fakahatchee Grass	3G; 18"HT; 12"O.C.	Full
PC	79	Ipomea pes caprae	Railroad Vine	1G; 6"HT; 10"O.C.	
BS	4	Bougainvillea spp.	Purple Bougainvillea	7G; TRL.	Full to base; Blooming; Purple

PROPOSED PLANTS

LIGUSTRUM JAPONICUM

VEITCHIA MONTGOMERYANA

CLUSIA GUTTIFERA

FICUS MICROCARPA 'GREEN ISLAND'

SERENOA REPENS 'CINEREA'

TRIPSACUM FLORIDANA

IPOMEA PES CAPRAE

BOUGAINVILLEA

FRANKLIN
PENTHOUSE

MIAMI BEACH

SITE ADDRESS:

ONE OCEAN
1 COLLINS AVE
MIAMI BEACH, FL 33139

OWNER: ARCHITECT:

FRANKLIN DEBORAH WECSSELMAN DESIGN

1 COLLINS AVENUE 7580 NE 4TH CT, STE 103
MIAMI BEACH, FL 33139 MIAMI, FL 33138
P: 305-758-1112 P: 305-758-1112

ARCHITECT OF RECORD:

RYAN ALDERMAN

P: 305-801-9185

enea
garden design

Enea Garden Design Inc.
7580 NE 4th Court, Suite 105
Miami, Florida 33138, USA
T+1 305.576.6702 | F+1 305.576.6703
www.enea.ch | info.miami@enea.ch
REG.No: LC26000339

All landscaping designs, plans, concepts, drawings and renderings (hereinafter "Enea's Designs") are original and created by Enea Garden Design, Inc. All of Enea's Designs are the exclusive property of Enea Garden Design, Inc. and protected by Copyright laws. The use, reproduction, or copying of any of Enea's Designs without express written authorization from Enea Garden Design Inc. is strictly prohibited.

No: DATE: ISSUE FOR

NOT FOR
CONSTRUCTION

ISSUED FOR:
100% Design
Development

PROJECT No: MA16112
DRAWN BY: KHI
REVIEWED BY: CMO/NCH
DATE: 11.01.16
SCALE: 1/4"=1'

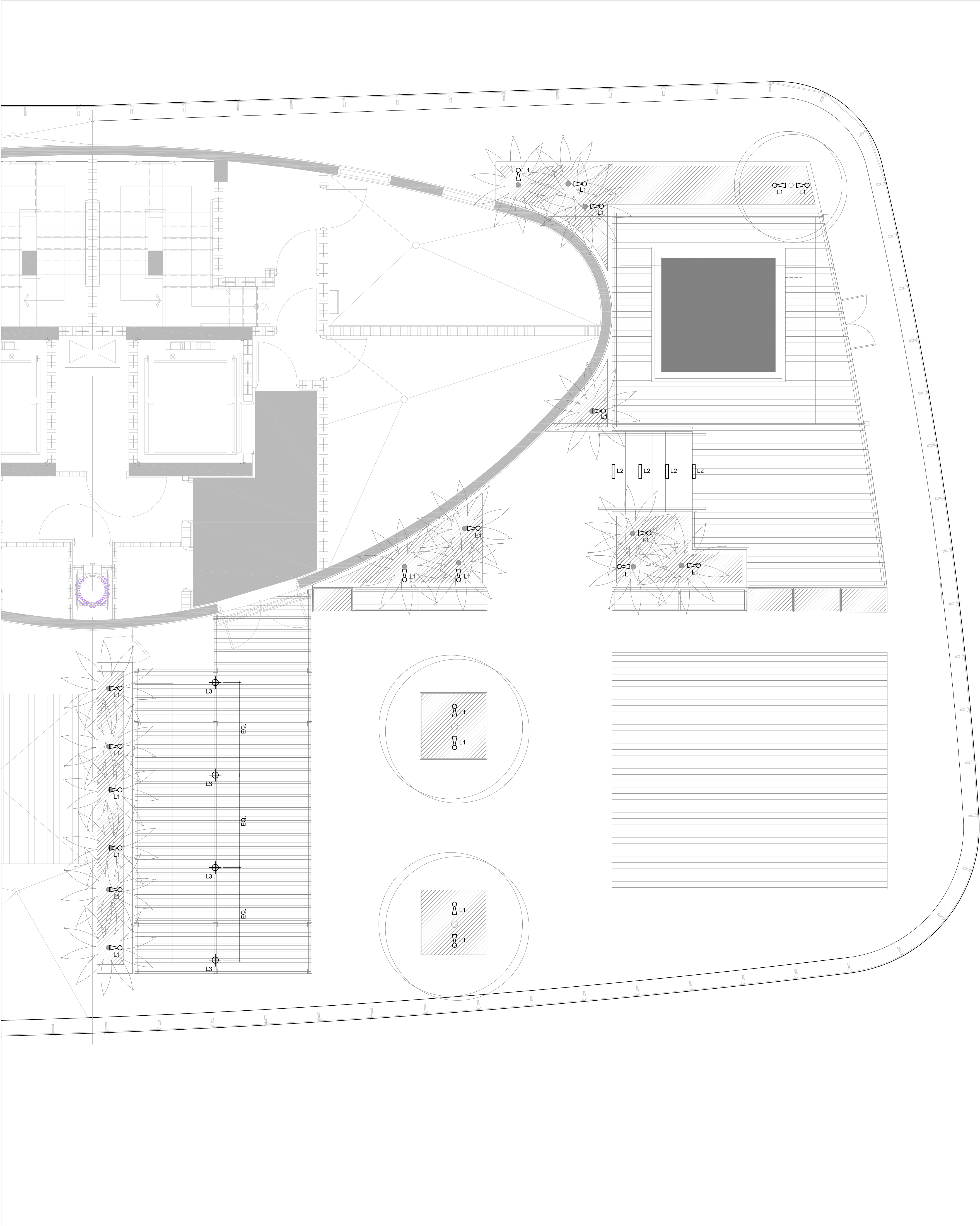
DRAWING TITLE:

PLANTING PLAN

SHEET NO:

L-500

© Enea Garden Design Inc.- 2016



LIGHTING SCHEDULE

SYM	FIXTURE TYPE - MANUFACTURER	QTY	VOLTAGE	BULB TYPE WATTAGE	MOUNTING TYPE AND HEIGHT	SIZE	FINISH	NOTES
L1	FL- Flood Light Lumiere - cambria 203 FL	22	12 V	20 W - MR 16	Ground; Provide adjustable stake	2" Ø; x 4 5/8"	Stainless Steel	
L2	SL- Steplight Bega	4	120 - 277 V	5.6W LED	Recessed	6 5/8" x 2 3/4"	Silver	
L3	RLD - Recessed Louvered Downlight Beachside Lighting	4	12 V	5 W	Recessed	4 3/4" Ø	Brass w/ nickel plating	Requires remote transformer per manufacturer's recommendation

FIXTURE SCHEDULE



GENERAL NOTES:

1. THE OWNER'S ELECTRICAL ENGINEER SHALL BE RESPONSIBLE FOR THE DESIGN, SPECIFICATION AND DOCUMENTATION OF ALL LINE VOLTAGE, SWITCHING, WIRING, AS WELL AS GFI AND JUNCTION BOXES FOR ELECTRICAL CONNECTIONS, AND TO ENSURE COMPLIANCE WITH ALL LOCAL CODES. FINAL ENGINEERING DRAWINGS FOR THE LANDSCAPE LIGHTING ARE TO BE REVIEWED AND APPROVED BY ENEA.
2. LANDSCAPE LIGHTING IS INTENDED FOR AESTHETIC ILLUMINATION OF PLANT MATERIAL AND SHALL NOT BE USED AS SECURITY LIGHTING. ALL TRANSFORMERS FOR THE LANDSCAPE LIGHTING FIXTURES ARE TO BE CONNECTED TO THE HOME LIGHTING CONTROL SYSTEM.
3. CONDUIT INSTALLATION SHALL ONLY COMMENCE AFTER THE INSTALLATION OF ALL LARGE TREES.
4. GENERAL CONTRACTOR IS RESPONSIBLE TO COORDINATE THE ELECTRICAL INSTALLATION WITH THE PROPOSED GARDEN. ALL ELECTRICAL CONDUITS THAT FALL WITHIN LANDSCAPE AREAS SHALL BE INSTALLED AT THE PERIMETERS OF THESE AREAS TO ALLOW FOR THE SPECIFIED PLANTINGS.
5. ALL PROPOSED INGROUND TRANSFORMERS ARE TO BE HOT-WIRED TO A JUNCTION BOX.
6. ALL GFI AND JUNCTION BOXES, CONDUITS/WIRING AND ELECTRICAL SUPPLY SHALL BE BY THE GENERAL CONTRACTOR. ALL JUNCTION BOXES THAT FALL WITHIN LANDSCAPE AREAS ARE TO BE BELOW GRADE BURIED TYPE, ABOVE GROUND OR VISIBLE JUNCTION BOXES SHALL NOT BE ALLOWED UNLESS MOUNTED ON A WALL.
7. INSTALL ALL LANDSCAPE LIGHTING FIXTURES FOLLOWING MANUFACTURER'S RECOMMENDATIONS, NO MORE THAN 3-4 FIXTURES PER LINE.
8. ALL FIXTURES INSTALLED SHALL BE AS SPECIFIED, NO FIXTURE SUBSTITUTION SHALL BE MADE WITHOUT THE PRIOR CONSENT OF ENEA.
9. FLOOD LIGHTS SHALL BE STAKE MOUNTED IN AREAS WITH GROUNDCOVER/ SHRUB PLANTING. STAKES SHALL BE MIN. HEIGHT OF PLANT MATERIAL.

FRANKLIN
PENTHOUSE

MIAMI BEACH

SITE ADDRESS:

ONE OCEAN
1 COLLINS AVE
MIAMI BEACH, FL 33139

OWNER:

FRANKLIN

1 COLLINS AVENUE
MIAMI BEACH, FL 33139

ARCHITECT:

DEBORAH WECSSELMAN DESIGN

7580 NE 4TH CT, STE 103
MIAMI, FL 33138
P: 305-758-1112

ARCHITECT OF RECORD:

RYAN ALDERMAN

P: 305-801-9185

enea
garden design

Enea Garden Design Inc.
7580 NE 4th Court, Suite 105
Miami, Florida 33138, USA
T+1 305.576.6702 | F+1 305.576.6703
www.enea.ch | info.miami@enea.ch
REG.No: LC26000339

All landscaping designs, plans, concepts, drawings and renderings (hereinafter "Enea's Designs") are original and created by Enea Garden Design, Inc. All of Enea's Designs are the exclusive property of Enea Garden Design, Inc. and protected by Copyright laws. The use, reproduction, or copying of any of Enea's Designs without express written authorization from Enea Garden Design Inc. is strictly prohibited.

No: DATE: ISSUE FOR

NOT FOR
CONSTRUCTION

ISSUED FOR:

100% Design
Development

PROJECT No: MA16112

DRAWN BY: KHI

REVIEWED BY: CMO/NCH

DATE: 11.01.16

SCALE: 1/4"=1'

DRAWING TITLE:

LIGHTING PLAN

SHEET NO:

L-600

© Enea Garden Design Inc. - 2016