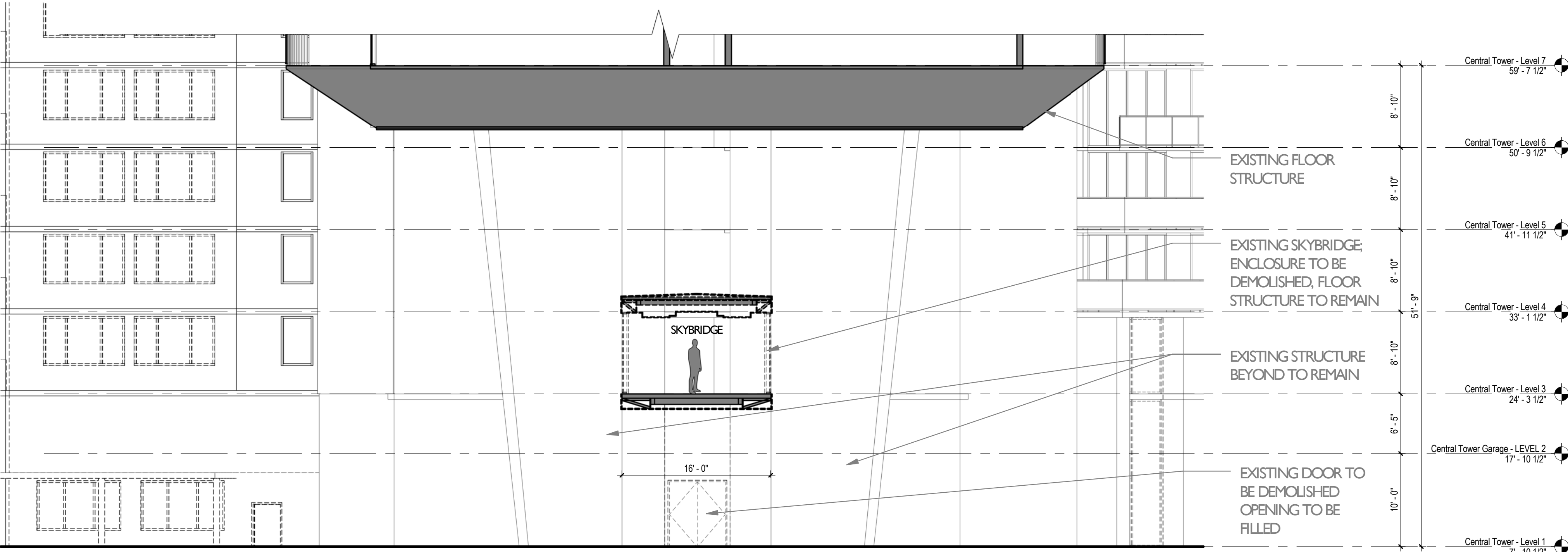
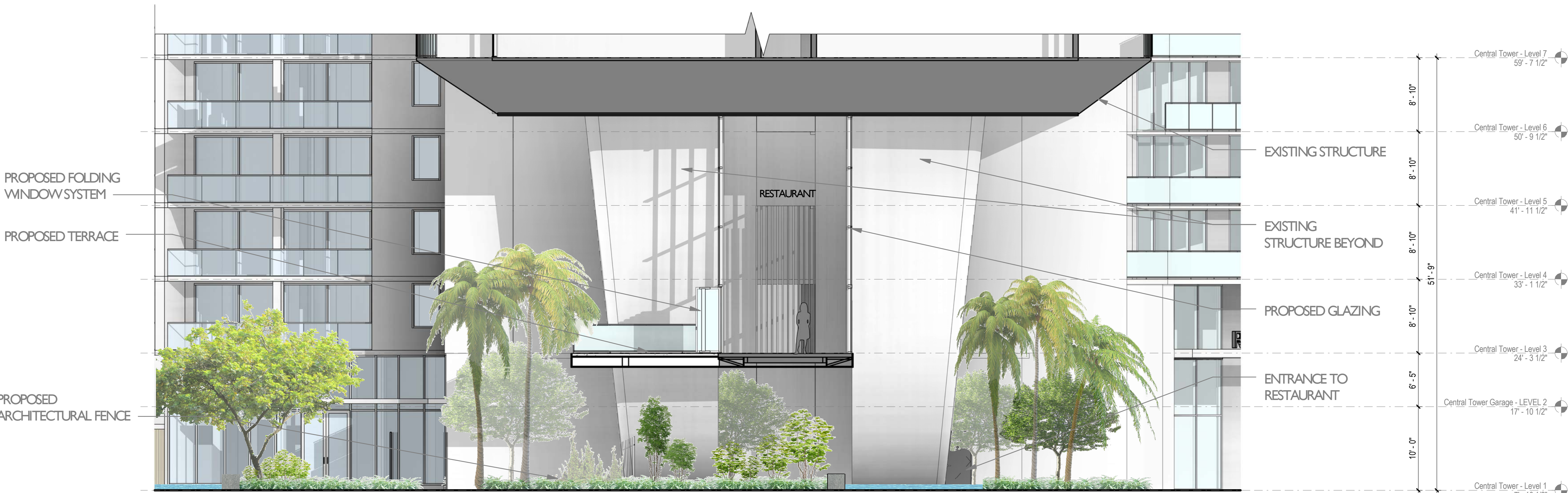


PROPOSED INTERIOR SPACE

SKYBRIDGE CENTRAL TOWER - SECTION 1 EXISTING & PROPOSED



Central Tower - Section I Existing
SCALE: 1/8" = 1'-0"



Central Tower - Section I Proposed
SCALE: 1/8" = 1'-0"

GENERAL NOTE:
ALL ELEVATIONS & SECTIONS
ARE NOTED AS NGVD

Scale: As indicated
Note: When printed on 11 x 17 paper scale is halved

FLAMINGO
1420 BAY ROAD, MIAMI BEACH

Stantec Architecture Inc - AA26000733
Jonathan Cardello Lic. # AR93391



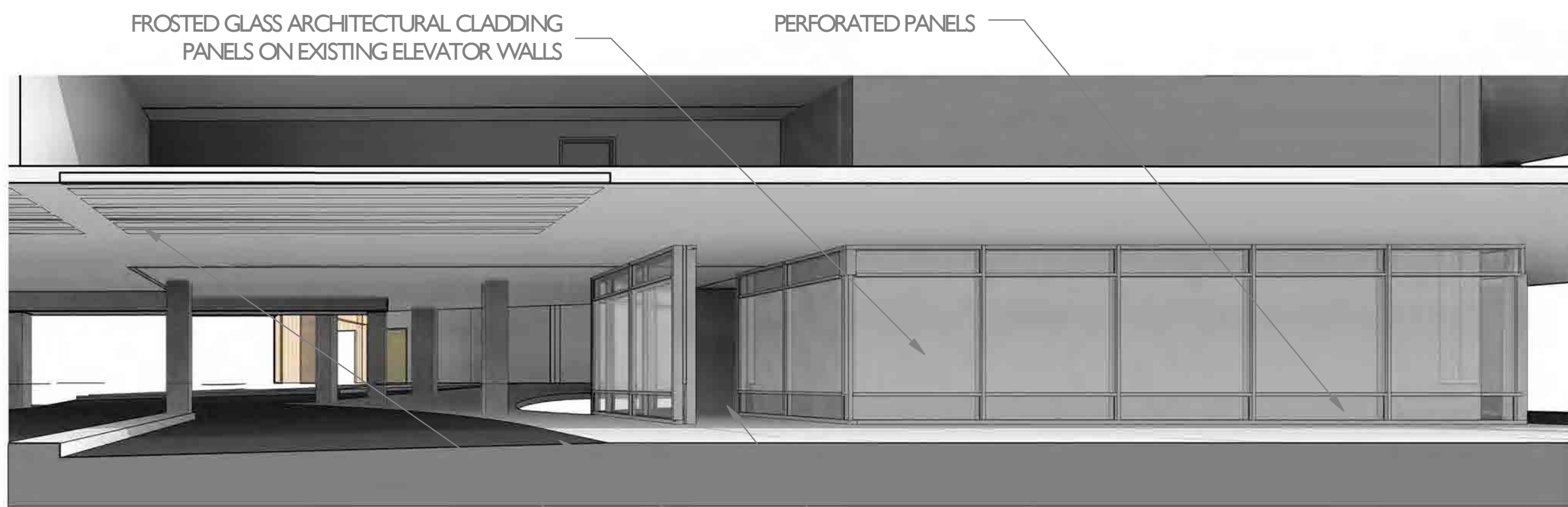
Stantec Architecture Inc.
One Biscayne Tower Suite 1670
2 South Biscayne Boulevard
Miami, FL 33131-1804
Tel: (305) 482-8700 / Fax: (305) 482-8770

DRB SUBMITTAL

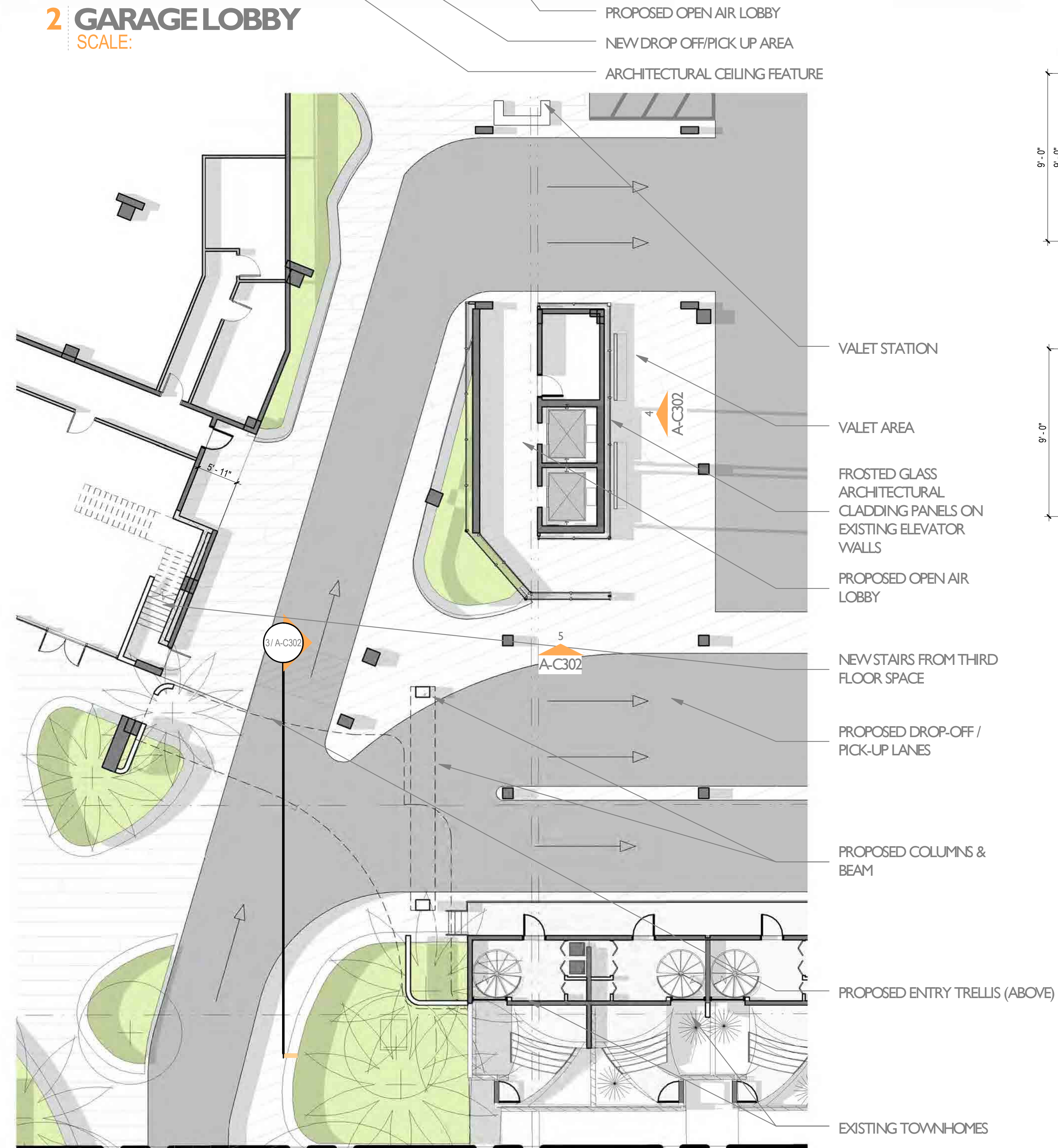
08.03.2017

Copyright Reserved

A-C301



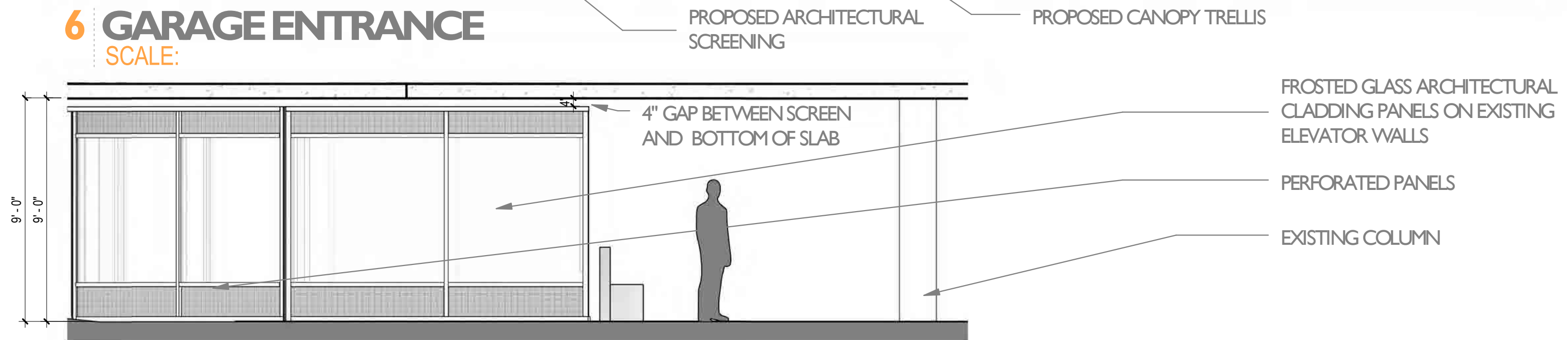
2 GARAGE LOBBY
SCALE: 3/32" = 1'-0"



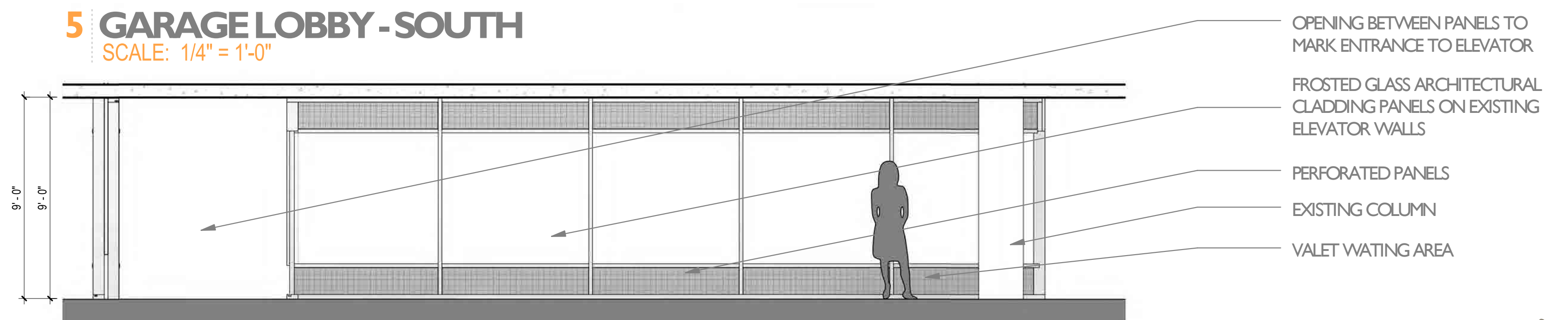
1 GARAGE ENTRY & LOBBY
SCALE: 3/32" = 1'-0"



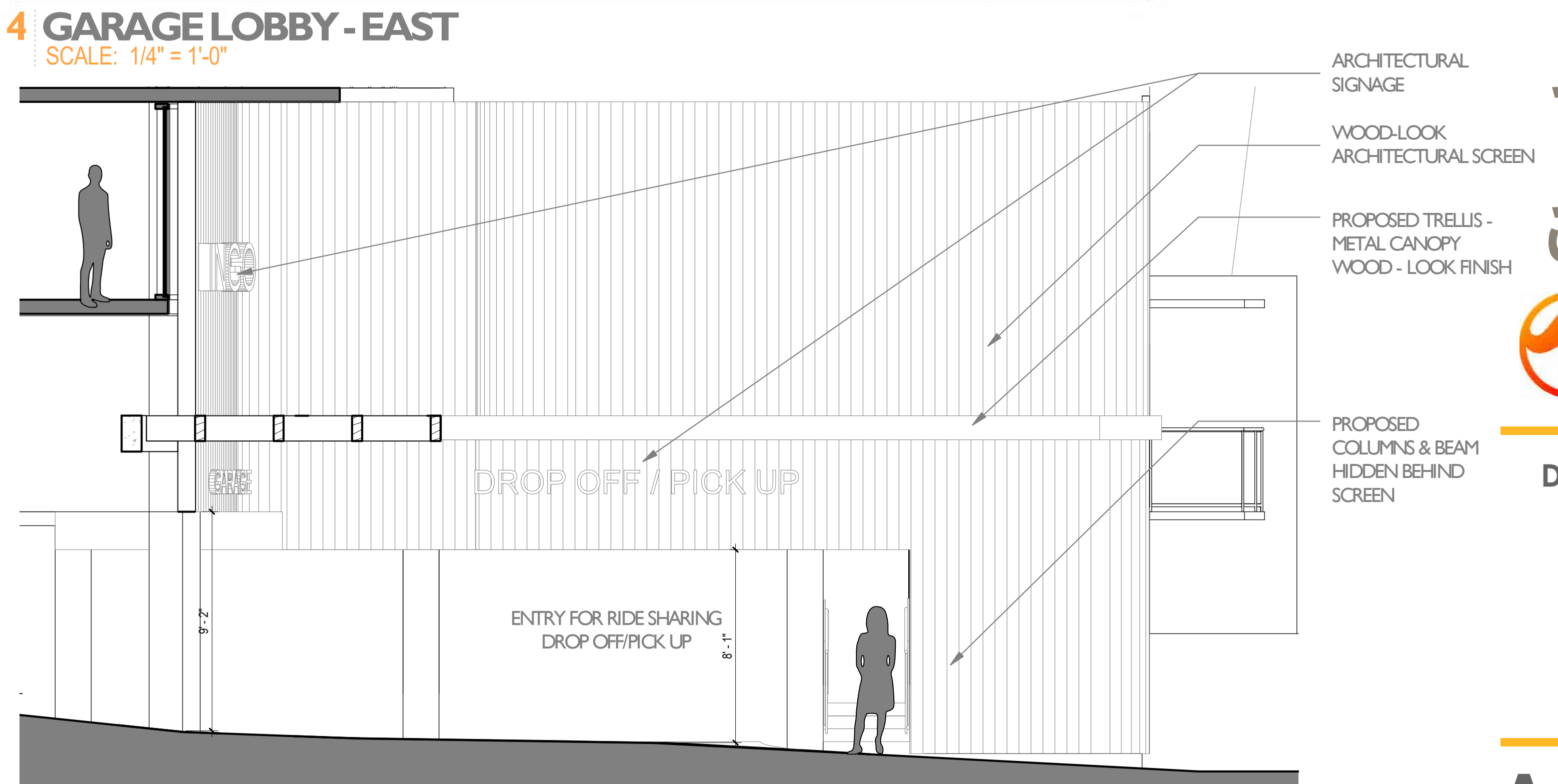
6 GARAGE ENTRANCE
SCALE: 3/32" = 1'-0"



5 GARAGE LOBBY - SOUTH
SCALE: 1/4" = 1'-0"



4 GARAGE LOBBY - EAST
SCALE: 1/4" = 1'-0"



3 SECTION THROUGH GARAGE ENTRANCE
SCALE: 1/4" = 1'-0"

CENTER TOWER - GARAGE ENTRY

FLAMINGO
1420 BAY ROAD, MIAMI BEACH

Stantec Architecture Inc. - AA26000733
Jonathan Cardello Lic. # AR93391

(305) 482-8770



Stantec Architecture Inc.
One Biscayne Tower Suite 1670
2 South Biscayne Boulevard
Miami, FL 33131-1804
Tel: (305) 482-8700 / Fax: (305) 482-8770

DRB SUBMITTAL

08.03.2017

Copyright Reserved

A-C302