

GENERAL NOTE:
REFER TO OVERALL PLAZA
FLOORPLAN ON SHEETS:
A-C101 & A-C102

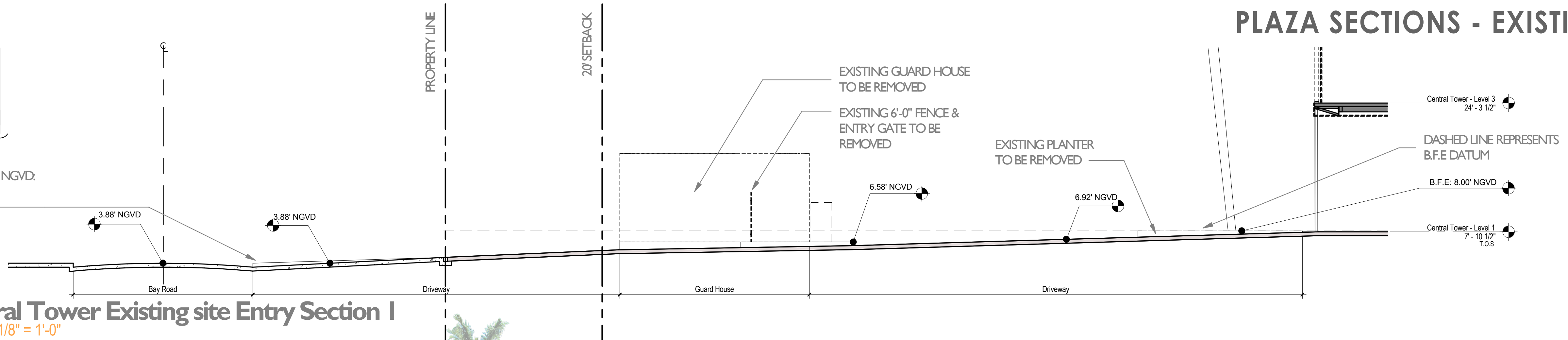
GRADE VALUE IN NGVD:
3.74 TO 4.55
(SIDEWALK)

1 Central Tower Existing site Entry Section 1

SCALE: 1/8" = 1'-0"

GRADE VALUE: 3.74 TO 4.55 NGVD
ASSUME NO CHANGE TO EXISTING
SIDEWALK AFTER CITY IMPROVEMENTS TO
ROADWAYS

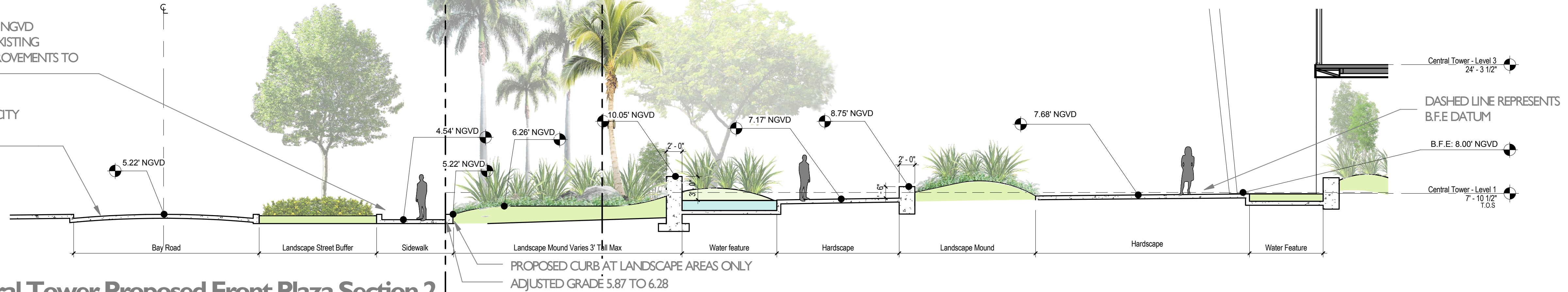
ROAD ELEVATIONS AFTER CITY
PROPOSED IMPROVEMENTS
FINAL ELEVATIONS T.B.D



2 Central Tower Proposed Front Plaza Section 2

SCALE: 1/8" = 1'-0"

GRADE VALUE IN NGVD: 3.74 TO 4.55
(SIDEWALK)

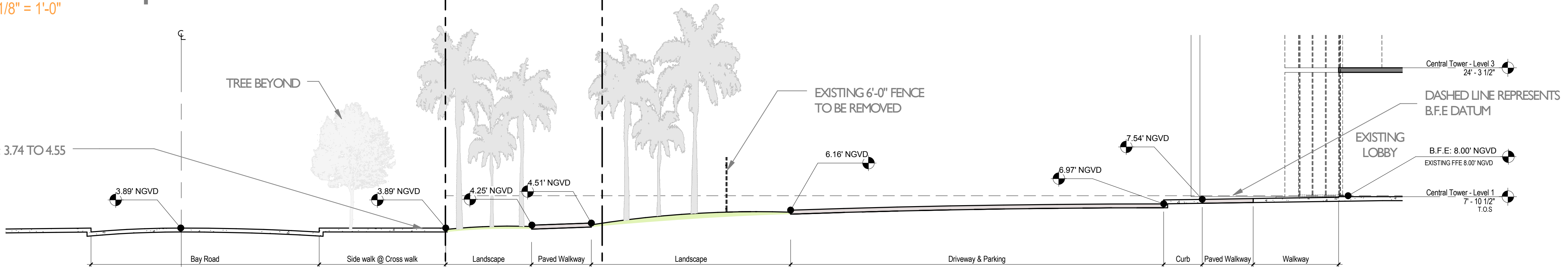


3 Central Tower Existing Site Entry Section 2

SCALE: 1/8" = 1'-0"

GRADE VALUE: 3.74 TO 4.55 NGVD
ASSUME NO CHANGE TO EXISTING
SIDEWALK AFTER CITY IMPROVEMENTS TO
ROADWAYS

ROAD ELEVATIONS AFTER CITY
PROPOSED IMPROVEMENTS
FINAL ELEVATIONS T.B.D

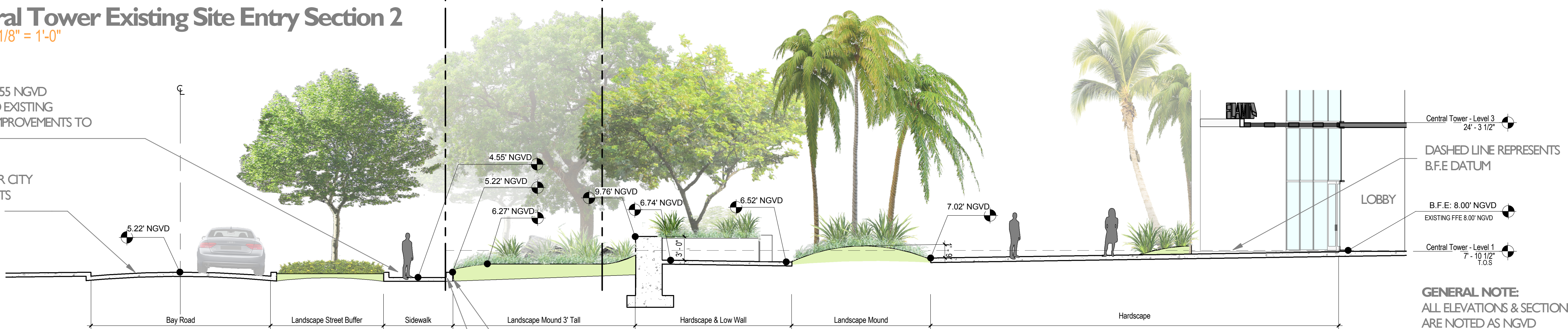


4 Central Tower Proposed Front Plaza Section

SCALE: 1/8" = 1'-0"

GRADE VALUE: 3.74 TO 4.55 NGVD
ASSUME NO CHANGE TO EXISTING
SIDEWALK AFTER CITY IMPROVEMENTS TO
ROADWAYS

ROAD ELEVATIONS AFTER CITY
PROPOSED IMPROVEMENTS
FINAL ELEVATIONS T.B.D



GENERAL NOTE:
ALL ELEVATIONS & SECTIONS
ARE NOTED AS NGVD

Scale: 1/8" = 1'-0"
Note: When printed on 11 x 17 paper scale is halved

PLAZA SECTIONS - EXISTING & PROPOSED

FLAMINGO
1420 BAY ROAD, MIAMI BEACH

Stantec Architecture Inc - AA26000733
Jonathan Cardello Lic. # AR93391

Stantec



Stantec Architecture Inc.
One Biscayne Tower Suite 1670
2 South Biscayne Boulevard
Miami, FL 33131-1804
Tel: (305) 482-8700 / Fax: (305) 482-8770

DRB SUBMITTAL

08.03.2017

Copyright Reserved

A-C303