



Dypsis madagascariensis_Lucubensis palm



Adonidia merrillii_Manila Palm



Peperomia obtusifolia_Baby Rubber Plant



Selloum Philodendron Selloum



Ophiopogon japonicus_Mondo Grass



Cordia sebestna_Orange Geiger



Cordia boisseri_Wild Olive



Arachis glabrata_Peanut Perennial



Agapanthus_African Lily



Ophiopogon japonicus_Mondo Grass



Podocarpus macrophyllus Podocarpus

AREA A

AREA B-B1

AREA C

4TH LEVEL



Passiflora species_Passion Vine



Tradescantia pallida_Purple Heart



Zamia floridana_Coontie



Coccoloba diversifolia_Pigeon Plum



Ophiopogon japonicus_Mondo Grass



Spathiphyllum x Clevelandii



Ficus pumila_Screening Fig

AREA D-E

AREA F

AREA G



Ernodea littoralis Golden creeper



Cassia bahamensis Bahama Cassia



Sabal minor Blue-stem



Zamia floridana_Coontie

ROOF

CODE REGULATION	REQUIRED	PROPOSED
7124 Indian Creek Rd .15 Acre		
PLOT AREA: 6500 SF		
Bldg Footprint		2,840 sf (43.7%)
Open Space		3,660 SF (56.3%)
Landscape/green space provided		2,100 SF (32%)
Street trees are spaced 20' on center max.		
Palms shall not count towards the minimum number of required trees		
CMB Code, Sec. 126-6. : if the minimum number of trees required cannot be planted on the ground level of the subject property, the applicant may plant 25 percent of the required trees on upper levels such as open recreation areas, roofs, and exposed decks		
"Very drought tolerant grasses and low growing native plants, including grasses and forbs may be used as groundcover beyond the maximum permitted grass areas".		
If the site cannot accommodate the required number of trees, then the owner can install said trees on public property (pending approval from CMB), or pay into the Tree Trust Fund: (\$2,500.00 for each two-inch caliper tree)		
Trees Required: 22 per net lot acre = 22 x 0.15 =	3.2	(4)
Max. Lawn area = 20% = 1,300 SF		
Required street Trees:	2 min.	2
Road frontage (survey) = 58.8 LF		
Proposed road landscape frontage		36.8 LF

LANDSCAPE PLAN: GROUND LEVEL

A



Dypsis madagascariensis_Lucubensis palm



Adonidia merrilli_Manila Palm



Selloum Philodendron
Selloum

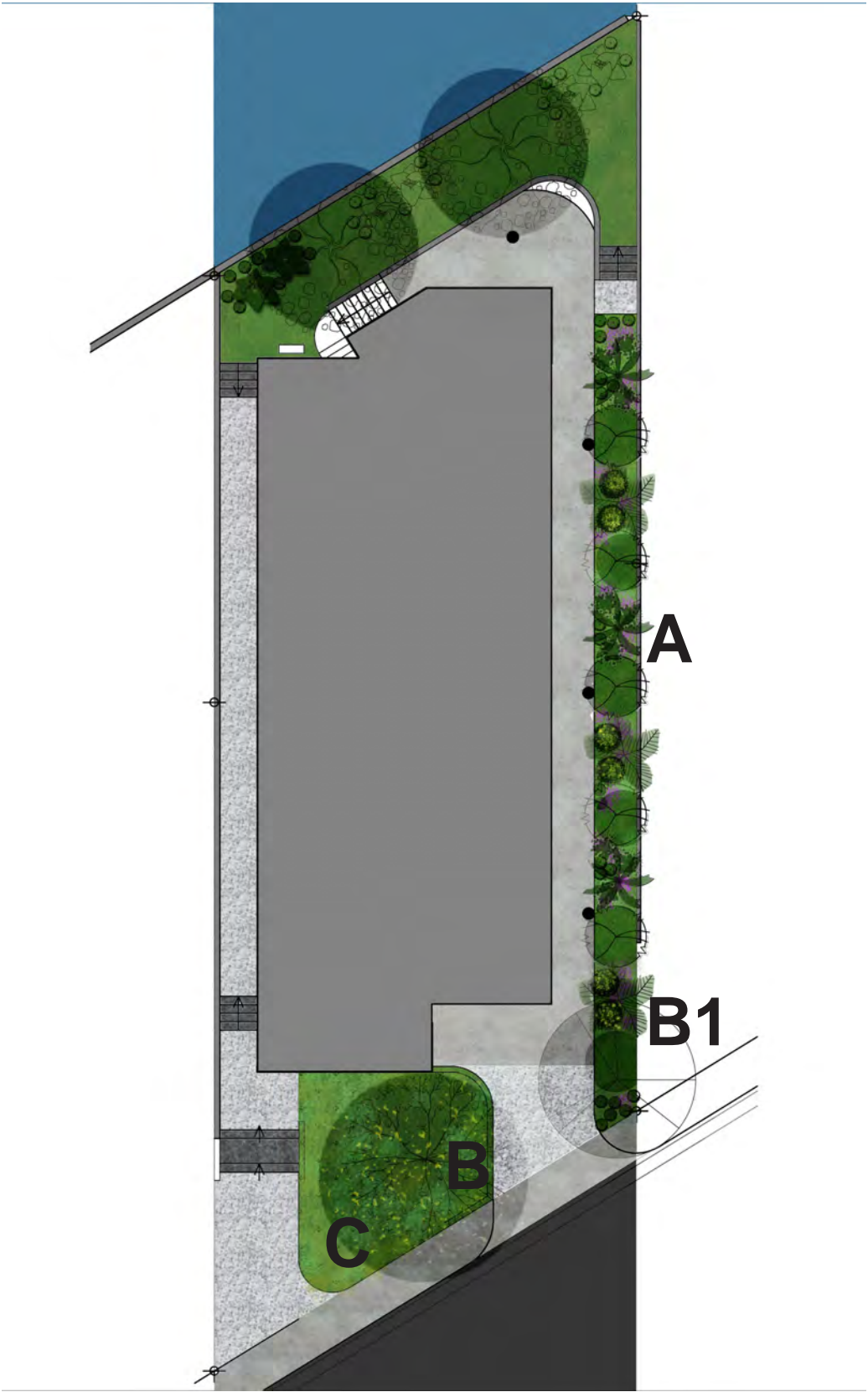


Peperomia obtusifolia_Baby Rubber Plant



Ophiopogon japonicus_Mondo Grass

SHRUBS &
GROUND COVER



B



Cordia sebestena_Oranger Geiger

B1



Cordia boissieri_Wild Olive

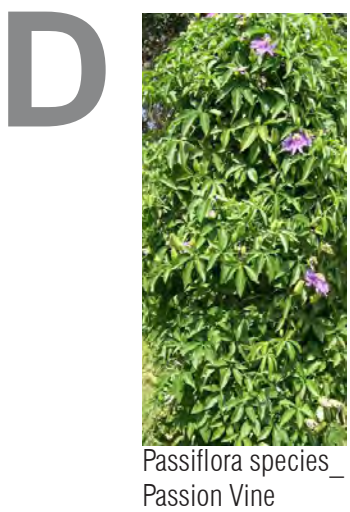
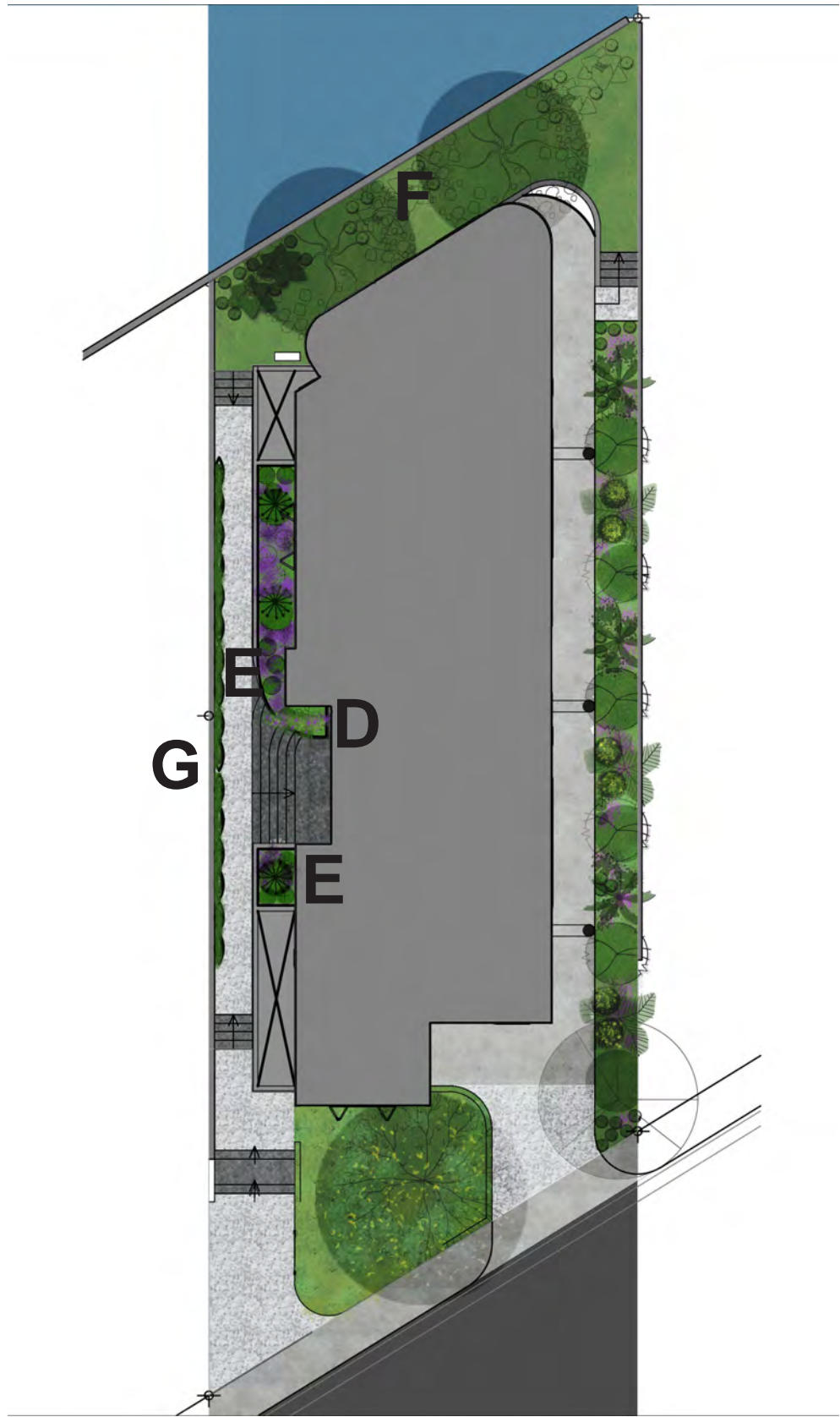
C



Arachis glabrata_Peanut Perennial

LANDSCAPE PLAN: LEVEL 2

INDIAN CREEK HOTEL



J



Ophiopogon japonicus_Mondo Grass



Agapanthus_African Lily

H



Podocarpus macrophyllus Podocarpus



LANDSCAPE PLAN: ROOF LEVEL

K



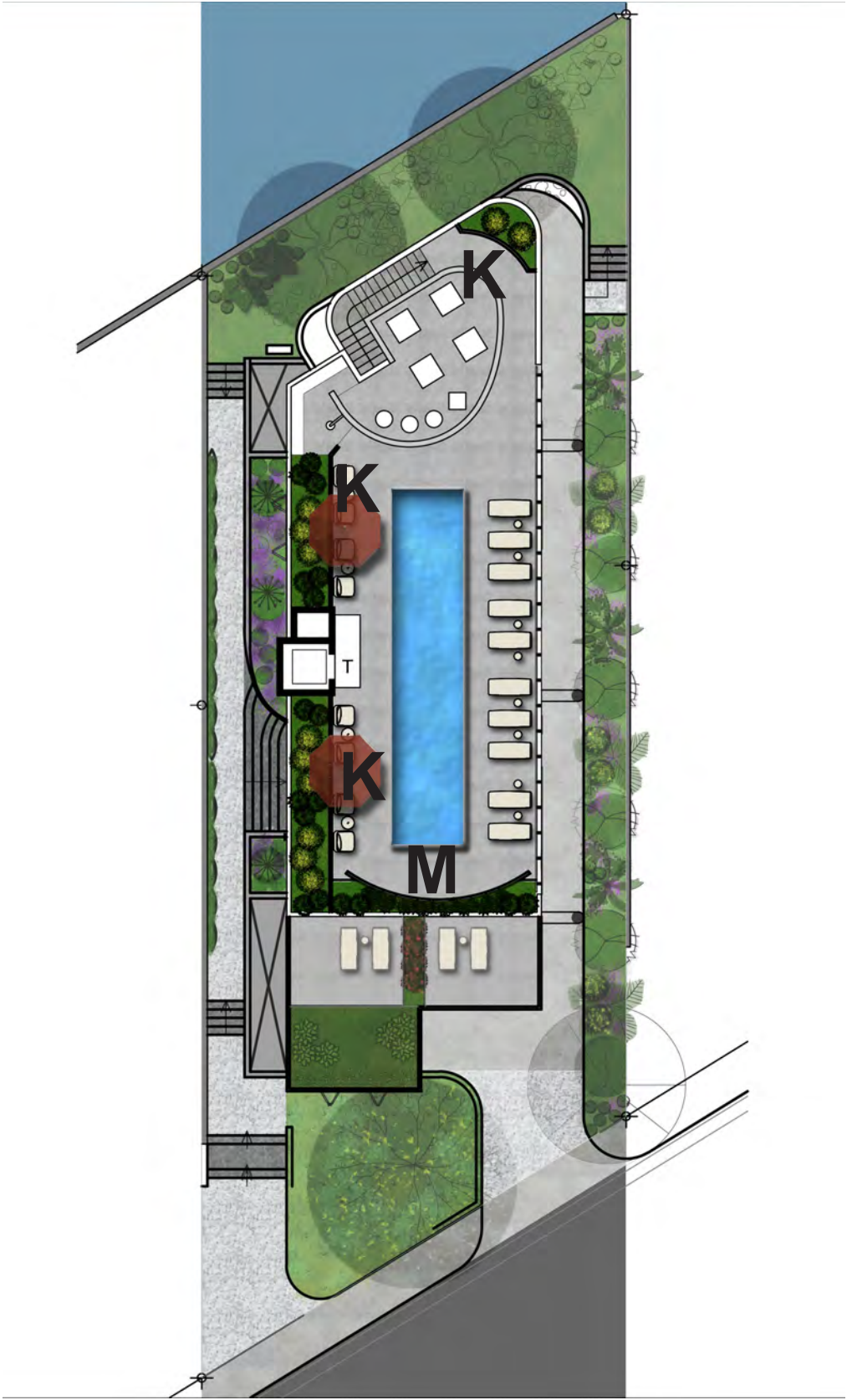
Sabal minor Blue-stem



Ernodea littoralis Golden creeper



Cassia bahamensis Bahama Cassia



M



Sabal minor Blue-stem

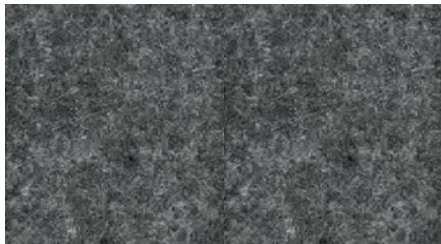


Ernodea littoralis Golden creeper

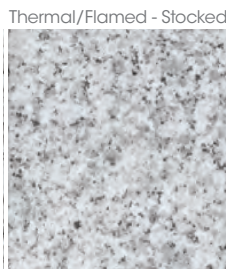


Zamia floridana Coontie

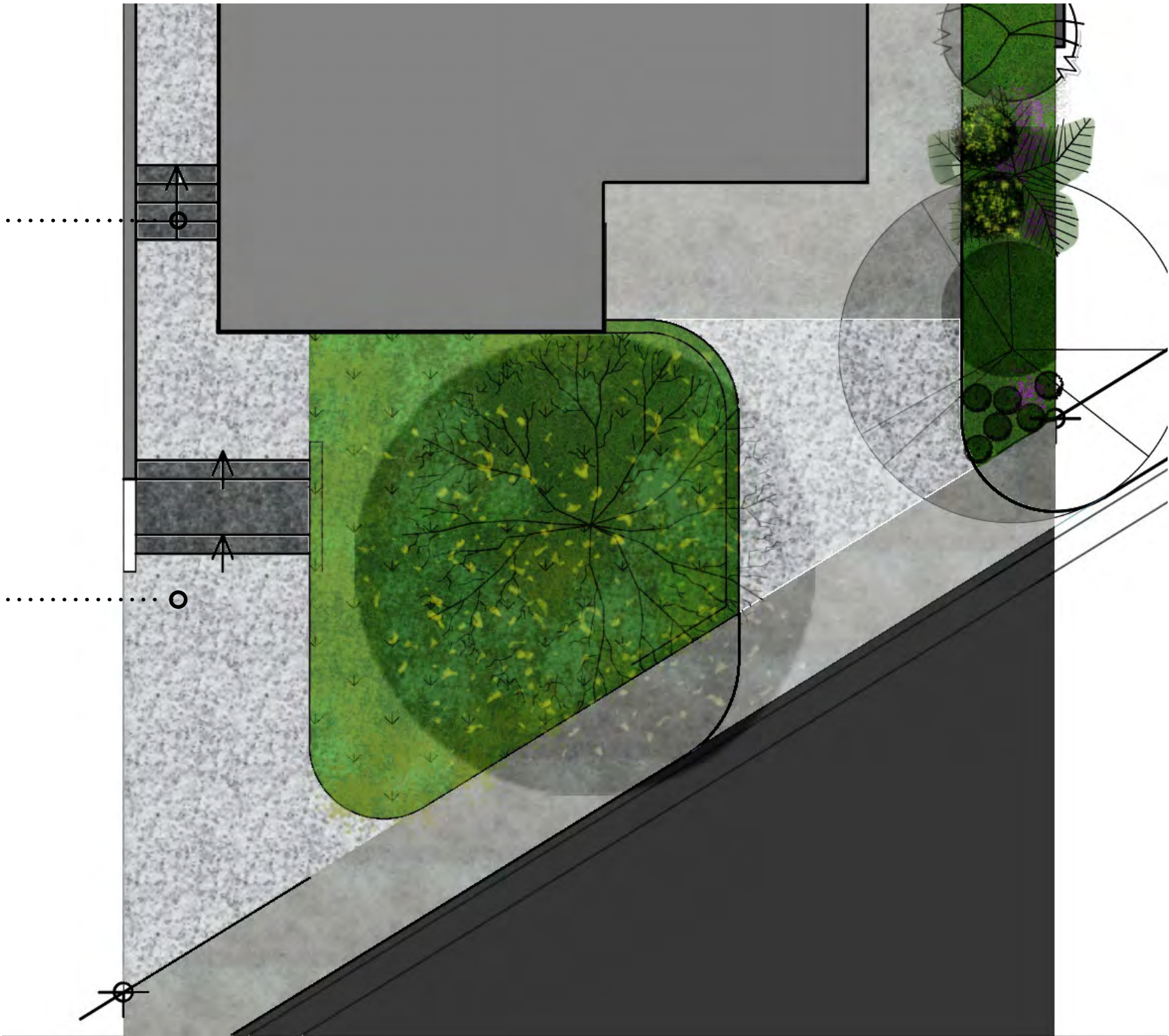
.....STAIRS

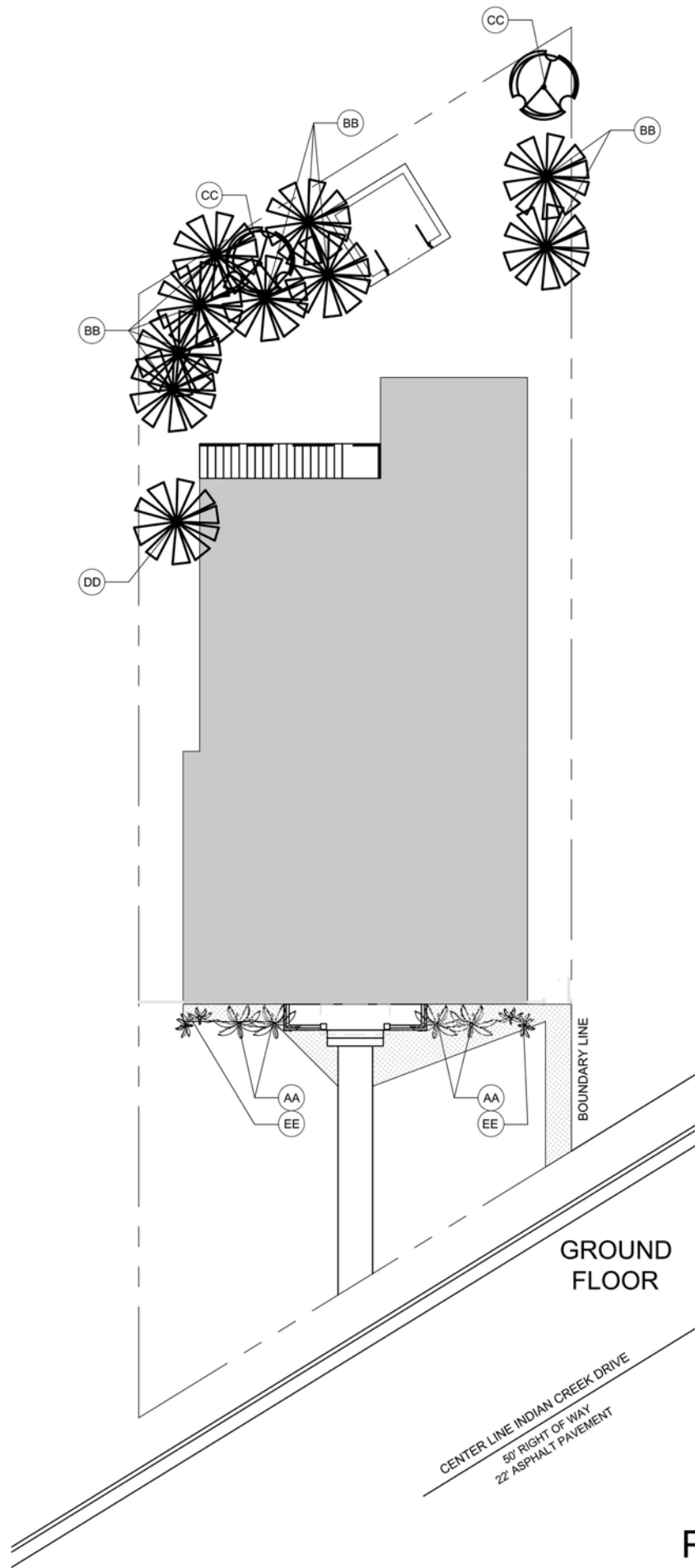






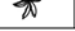
.....LANDINGS & WALKWAYS



Ashford White
Split sides, Thermal finish





EXISTING TREE TYPE									
QUANTITY		CODE	COMMON NAME	BOTANICAL NAME	HEIGHT	SPREAD	CALIPER	NATIVE	DISPOSITION
2		AA	CARPENTARIA PALM	Carpentaria acuminata	18'	12'	6" - twin cluster	NO	REMOVE
7		BB	DRAGON TREE	Dracaena marginata	16'	12'	3" - clusters	NO	REMOVE
2		CC	SILK TREE	Albizia Julibrissin	20'	18'	6"	NO	REMOVE
4		DD	COCONUT PALM	Cocos Nucifera	24'	12'	9"	NO	REMOVE
2		EE	WHITE BIRD OF PARADISE	Strelitzia nicolai	10'	6'	4" clusters	NO	REMOVE

0' 2' 5' 10'



PLAN TREE DISPOSITION 7128 INDIAN CREEK DRIVE | PLANNING BOARD | FINAL SUBMITTAL August 14, 2017