

MIAMI BEACH

NORTH SHORE OPEN SPACE PARK

DRB PRESENTATION UPDATE

September 2017

City Hall Commission Chambers



Calvin, Giordano & Associates, Inc.
EXCEPTIONAL SOLUTIONS™

WEST 8

TODAY'S AGENDA

Follow-up on open items from previous DRB
On March 7th 2017

OPEN ITEMS:

1. Park's Edge along Collins Ave
2. Park Lighting
3. Playground Location (Not Playground Selection)

1. PARK EDGE ALONG COLLINS AVE



Collins Av



NO PARKING
BUS STOP

10324



NO PARKING
SHOES
OPEN
PARKING

MIAMI BEACH



Calvin, Giordano & Associates, Inc.
EXCEPTIONAL SOLUTIONS™

WEST 8

SAFETY AND ENCLOSURE

Achieving a Securable Enclosure by Combining Elements that Clearly Define the Boundary of the Park



DESIGN OPTIONS



CURRENT EDGE CONDITION ALONG COLLINS AVE

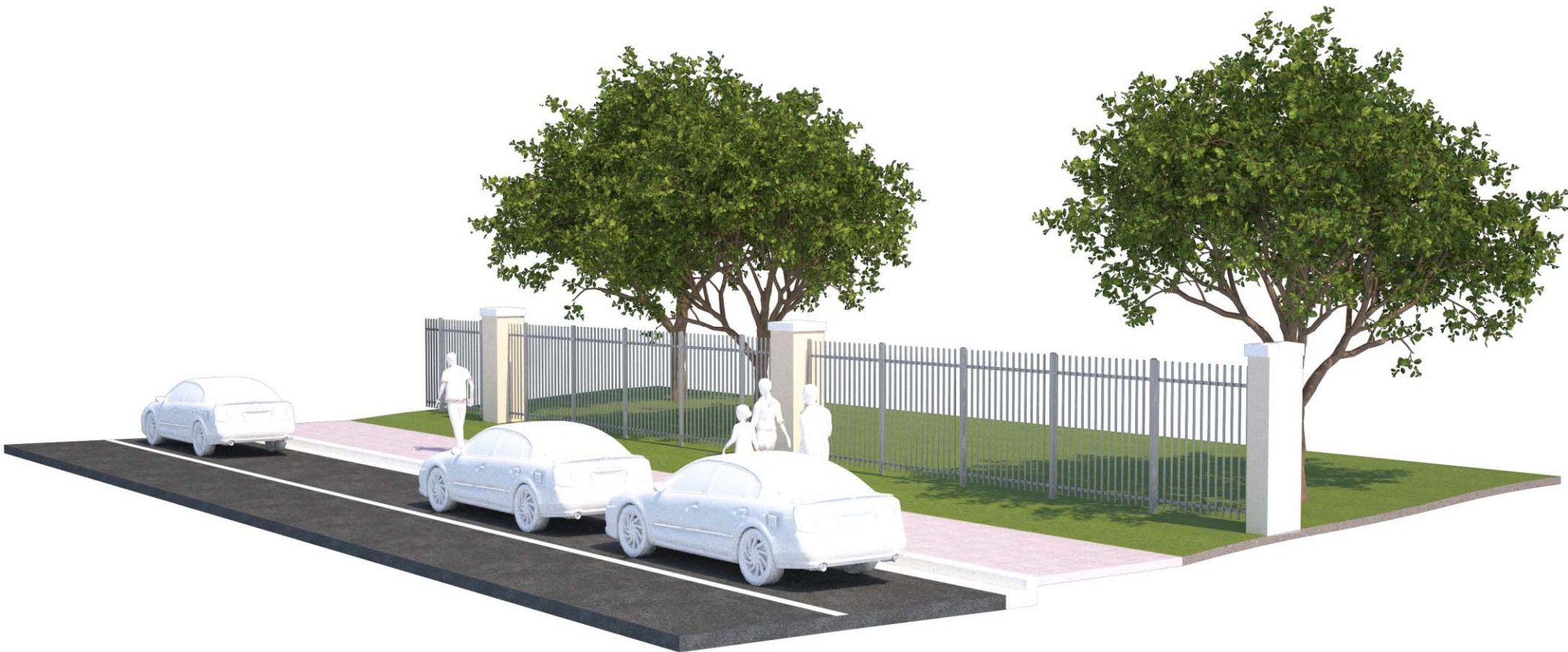
Black-out effect, Inconsistent alignment

Pros and Cons



EXISTING FENCE ALONG COLLINS AVE

The illusion of a straight-lined fence



EC

OPTION 1: MINOR REPAIRS

Repair and paint existing fences and columns
(Minor Maintenance)



1

OPTION 2: KEEP FENCE, ADD HEDGE

Paint and Repair; Only add planting
(Moderate Maintenance)



2

OPTION 3: REDUCE FENCE HEIGHT, KEEP COLUMNS

Reduce fence to 42", add hedge plantings
(Moderate Maintenance)



3

OPTION 4: ELIMINATE FENCE, KEEP COLUMNS

**Add hedge plantings
(Moderate Maintenance)**



4

OPTION 5: ELIMINATE FENCE, KEEP COLUMNS
Add 30" tall Oolite Limestone wall infill
(Low Maintenance)



5

BUDGET REALITIES

Modifications to the fence along Collins Ave was not part of the initial scope of work because of budgetary constraints; therefore, any modification to the fence is an unfunded improvement.

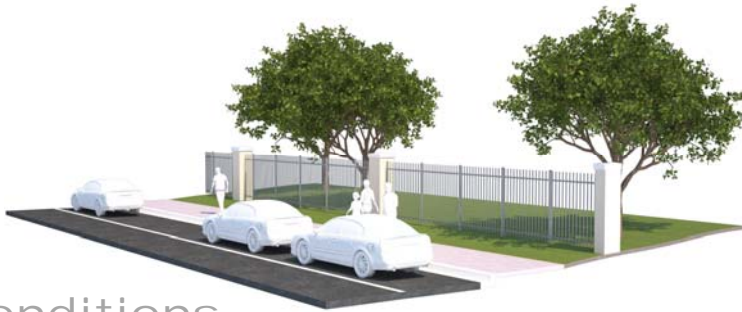
Choices on edge modifications will require either:

- A. Additional funding allocations, subject to the approval of the City Commission, or**
- B. Reduction/elimination of an already-approved, planned component in the park**

COMPARISON OF EXISTING CONDITIONS AND ALTERNATIVES

EC

Existing Conditions



3

Lower fence,
Add hedge

1

Paint & Repair



4

Remove fence,
Add hedge

2

Paint & Repair,
Add Hedge



5

Remove fence,
Add Miami Oolite wall

2. PARK LIGHTING

EXISTING SITE LIGHTING

Grandfathered, If kept may be repaired as needed



REGULATORY REALITIES

Because the majority of the park lies east of the Coastal Construction Control Line (CCCL), all new lighting will be subject to turtle-friendly requirements which will decrease the overall amount of illumination in the park.

While a fixture selection may be made by the Board, the ability to adequately light the park is subject to the permitting requirements established at the State through the Fish and Wildlife Conservation Commission.

They may require that any new lighting be limited to bollards outfitted with turtle-friendly fixtures.

LIGHT FIXTURE: OLIVIO LAMP

Currently used at Soundscape Park



Olivio Grande
SX 960 22-9



Luminaire
rotationally symmetric, wide beam 80° (± 40°) Flood
LED 4400 lm, 4000K, CRI > 80, electronic converter, Connected
load: 53 W

housing made of die-cast aluminium, aluminium, stainless
steel, painted, screws stainless steel, easy maintenance access
facilitated by lock-bar mechanism, the power cord is invisibly
conducted through the 2-way adjustable head joint, light
direction can be thoroughly adjusted by the 2-way adjustable
head joint, can be swivelled from 20° to 195° and rotated +/-
180°

toughened glass
Optical system: flood reflector

CE, ENEC 05, IK07, IP67, Protection class II, optional I

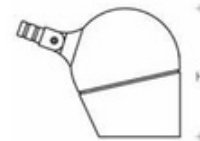
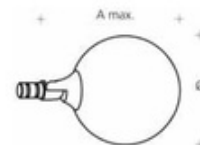
Manufacturer: Selux, Type: SX 960 22-9 [Colour: Selux graphite
or choice of colours]

Outreach: 410 mm
Diameter Ø: 275 mm
Height H: 320 mm
Weight: 10.00 kg
Windage area: 0.08 m²

Colours

Selux graphite or choice of colours

SX 960 22-9



MOON LIGHT EFFECT
Currently used at Soundscape Park



CAN BE INTEGRATED WITH SURVEILLANCE CCTV

Flexible System



PARK LIGHTING PLAN

Fixture Location



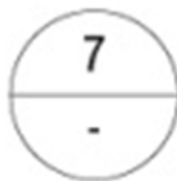
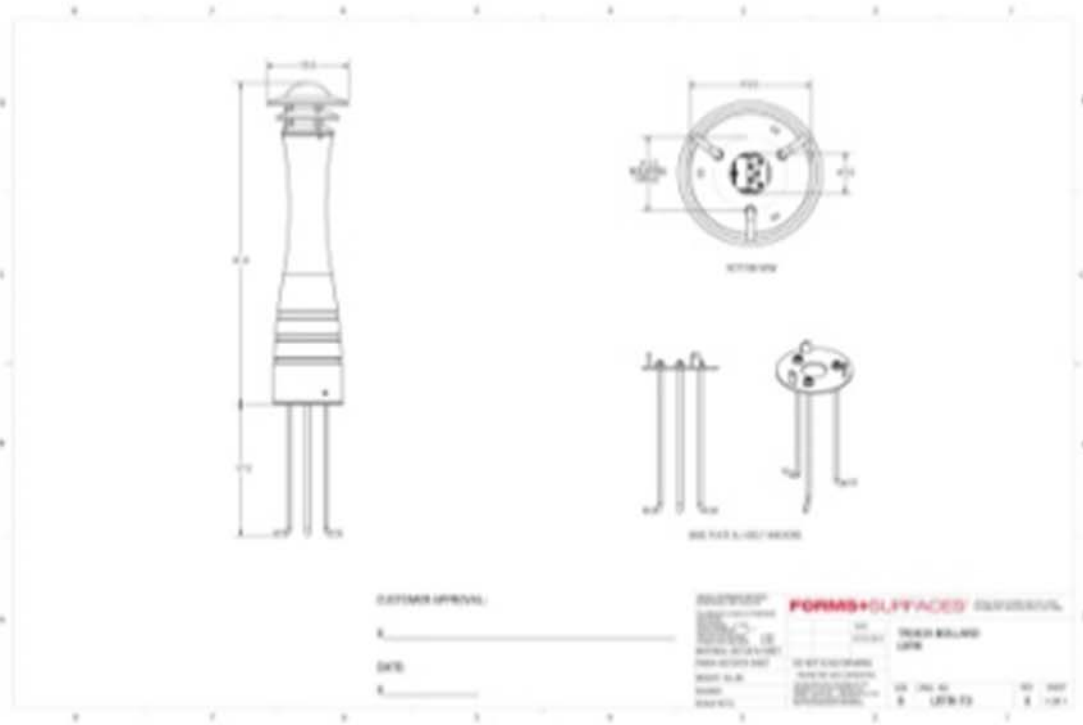
SITE LIGHTING

City-standard turtle-friendly bollards
will be used throughout the beachwalk component



SITE LIGHTING

City-standard turtle-friendly bollards will be used throughout the beachwalk component



BEACHWALK BOLLARD

NTS

3. PLAYGROUND LOCATION

EXISTING PLAYGROUND

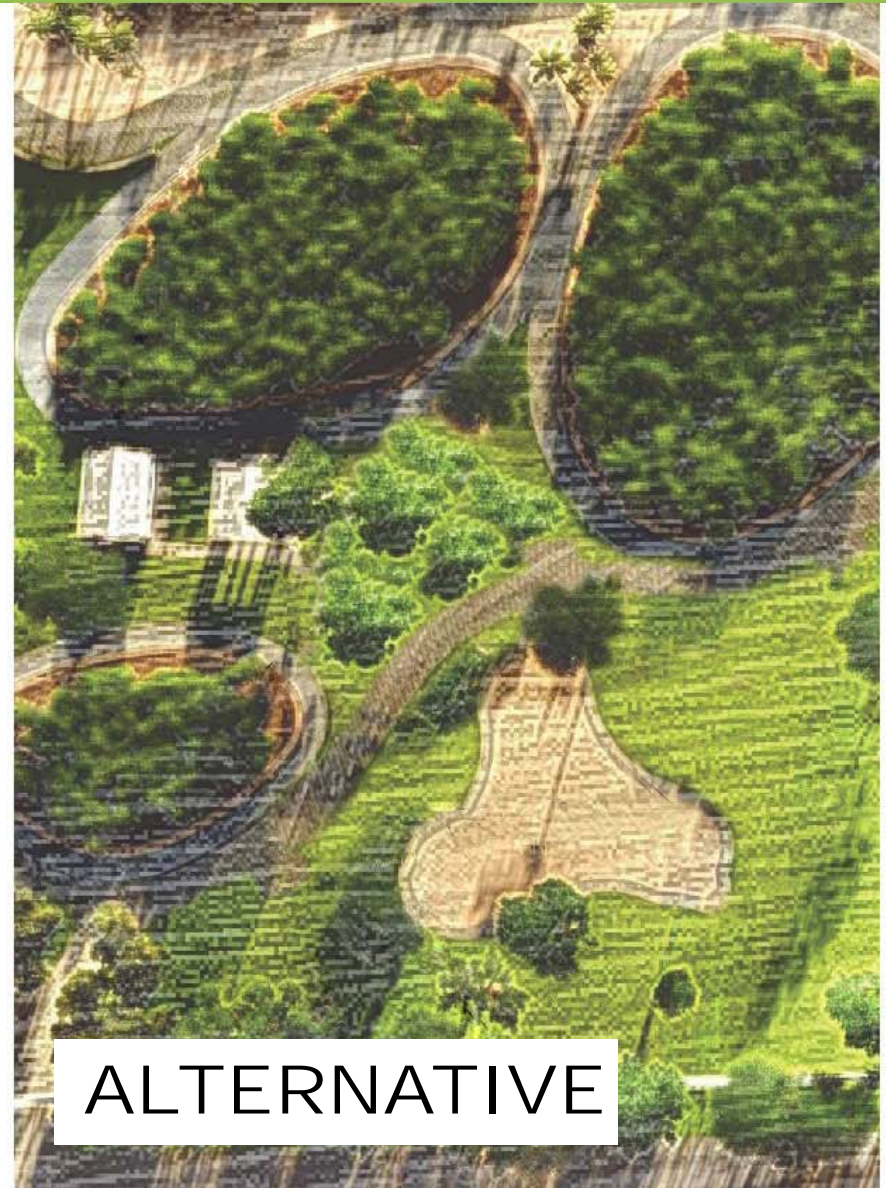
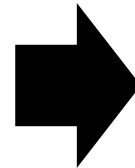
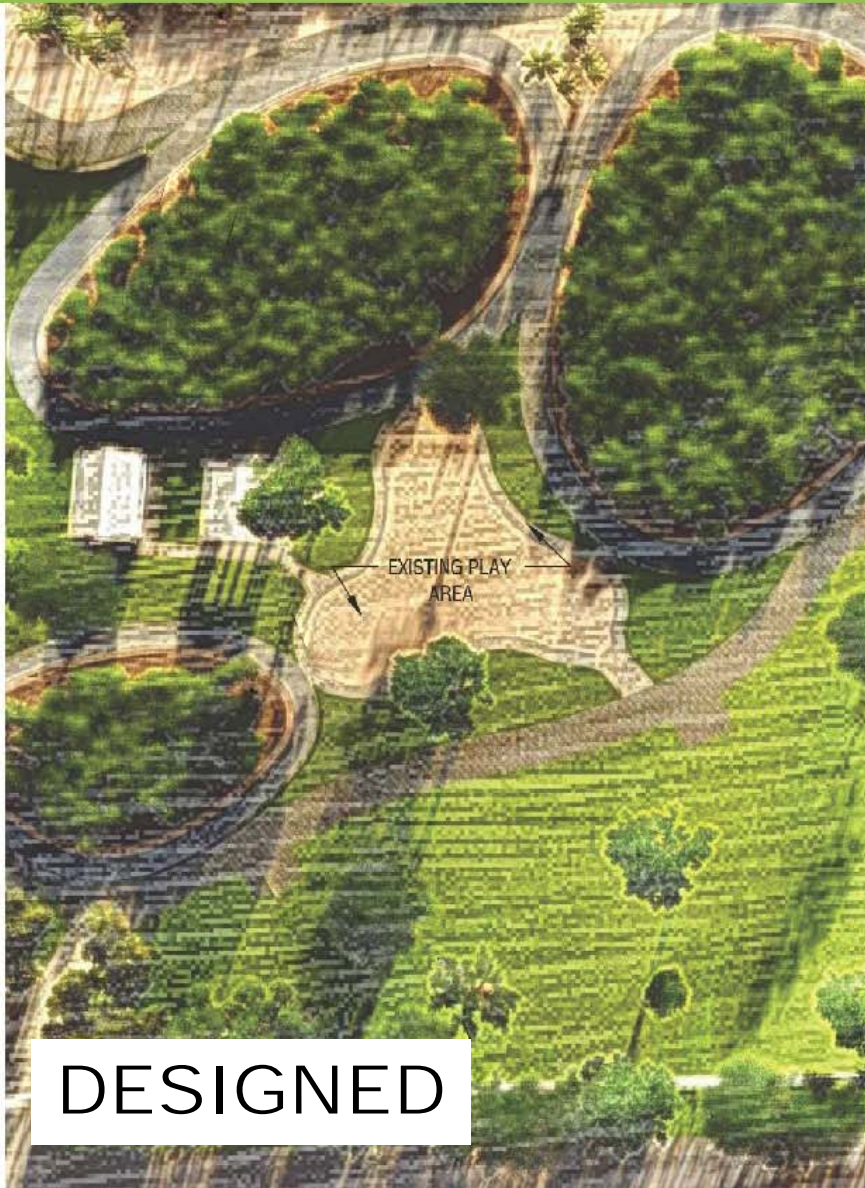


EXISTING PLAYGROUND



PLAYGROUND LOCATION

Shift playground away from densely planted areas for better security



PROS & CONS

Playground

AS DESIGNED:




- Set closest to the existing restrooms
- Furthest location from Collins Ave
- Saves cost because existing area is already graded appropriately



- Close to the densely vegetated area (a few parents voiced concerns about potential homeless in the shade in proximity to the playground)
 - Can be addressed by pulling the pod back away from the play area

ALTERNATIVE:



- Provides greater opportunity for expansion of the play area
- 
- Closer to Collins Ave – Concerns about proximity to traffic (depending on type of edge chosen)
 - Will need to be graded (flattened) to accommodate play area (increased impact on existing large shade trees)
 - Reduces the amount of existing lawn area

PLAYGROUND CONSIDERATIONS WHEN CONSIDERING PLACEMENT

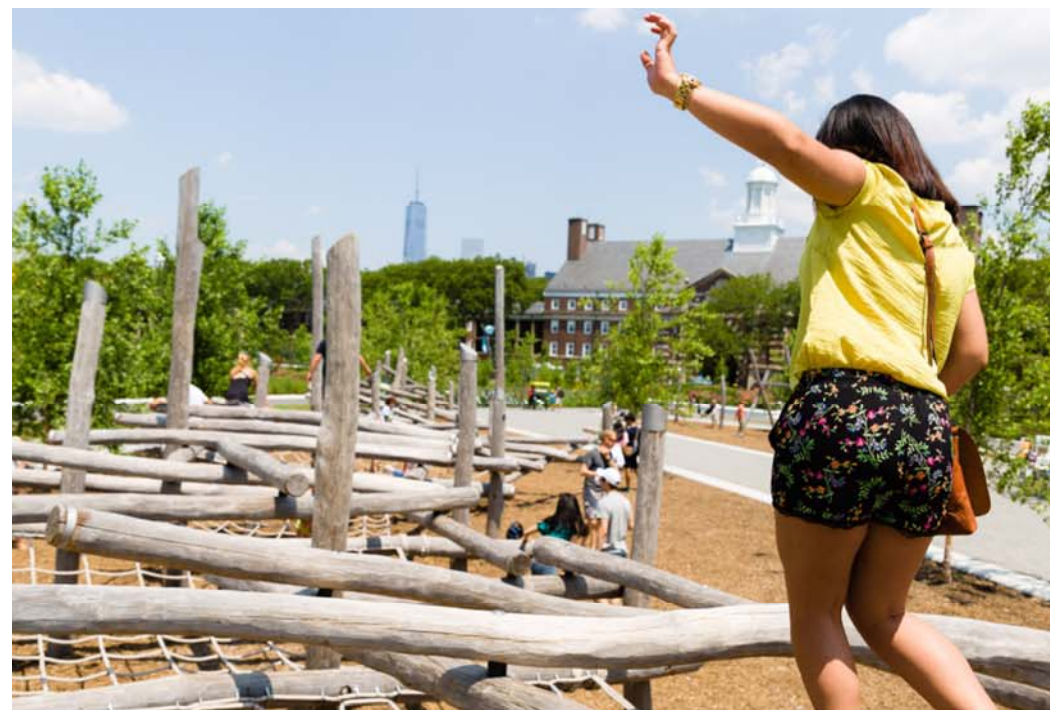
While the selection of the playground equipment is not being proposed for consideration, it is important to consider that the type of equipment that we are recommending is one that is of an open character.

Parents expressed that they do not want equipment where they lose visibility of their children. With greater 'openness' in the design of the equipment, the more important it is to not shift the play area closer to Collins.

PLAYGROUND TYPE

Desired Character: Ecological, Friendly, Natural Materials
(Photographs Only for Reference)





MIAMI BEACH



Calvin, Giordano & Associates, Inc.
EXCEPTIONAL SOLUTIONS™

WEST 8

REQUESTS FOR THE BOARD

For the fence along Collins Ave:

- Request approval of existing conditions, with an approval of alternates, should the funding become available

For the site lighting:

- Request approval of existing conditions, with an approval of the alternates, should they be allowed by the Florida Fish and Wildlife Conservation Commission

For the playground location:

- Request approval of existing location, with an approval of the alternate location, should the funding become available for a new playground and should its dimensions require relocation to accommodate a larger size.

MIAMI BEACH

NORTH SHORE OPEN SPACE PARK

THANK YOU

City Hall Commission Chambers



Calvin, Giordano & Associates, Inc.
EXCEPTIONAL SOLUTIONS™

WEST 8